

WILLIAM M. SHARP, P.ENG.
CONSULTING GEOLOGICAL ENGINEER

801183

171 WEST ESPLANADE
NORTH VANCOUVER, B.C.

JAN. 14 / 72.

DEAR BILL:

WITH THIS THE DATA REQUESTED THE OTHER DAY.

THE ORE BLOCK DETAIL, WHICH IS OF PRINCIPAL INTEREST TO YOU, TENDS TO BE OBSCURED ~~BY~~ ON THE TRACING BY GEOLOGICAL DETAILS & COLOURS, SO I FIGURED THAT A PRINT WOULD BE MUCH EASIER TO FOLLOW. ALSO, IF YOU SHOULD FIND THAT CERTAIN INTERPRETATIONS OF MINE ARE MUCH AT ODDS WITH YOURS YOU COULD MAKE ANY NECESSARY NOTES ON THE PRINT. IN ANY CASE I WOULD BE PLEASED TO HAVE YOUR CRITICAL COMMENTS - VIA THIS PRINT OR BY LETTER.

ART BULLER PHONED YESTERDAY TO SAY THAT HE WOULD PERSONALLY APPRECIATE IT IF I SENT THIS MAP ALONG TO YOU, IN THAT IT MIGHT EXPEDITE PROGRESS ON ORE RESERVE CALCULATIONS AT THE MINE, AND HELP CLEAR THE WAY FOR A CONTINUATION OF GEOLOGICAL MAPPING. BY THE WAY, HE SEEMS TO HAVE FORGOTTEN THAT I LEARNED THAT YOU WERE ENGAGED ON ORE RESERVE ESTIMATES WHILE I WAS VISITING HIM IN THE OFFICE DURING MY LAST TRIP TO NEW DENVER - NOT THAT THIS MATTERS VERY MUCH.

ALTHOUGH THE MAP WAS NOT PART OF MY RECENT REPORT, AS ORDERED, I WOULD MUCH APPRECIATE IT IF YOU WOULD MORE-OR-LESS KEEP IT IN YOUR OWN 'ARSE POCKET' - CONSIDERING THAT SO MANY PERSONAL GUESSES WERE ENTERED ~~IN~~ INTO ITS COMPILATION.

BEST REGARDS

necessarily (added to map)
Silvane Ring of Composite (in eval. rpt.) Bill.

Encl. Table: Ore Reserve Estimates.

B-1

24'4"

B-2 \checkmark 90°

B-3 38"

3.0 c 20.9 17.1 5.2
(= 5.0 c 16.1 10.2 3.1)

1.15 c 49.8 9.3 17.8
(= 5.0 c 14.9 2.8 5.3)

(B-4)

28 x 182
28500'
3.5 (area) 21.6 6.8 13.2
(= 5.0 c 15.1 4.7 9.2)

6.0 c 30.1 6.1 18.7
9.5 c 58.7 23.1 9.5

5.5 c 15.1 1.1 14.8

(B-5)

Area
= 54 x 101.4
5480'²

1011.4'

(Possible)

B-6
Area = 72.5 x 54.5
= 3950'²

B-7
1512'²

B7 = 30' x 42.5 = 1275'²
+ 25' x 9.5 = 237
1512'²

B-8
= 40' x 25'
1000'²

B-9
Area = 36 x 26
936'²

Area = 51 x 57.5
= 2620'²

2620
1280
3900

B-11
Area = 1310'²

33.5'
39'

Area = 22.5 x 84
= 1895'²

B-12

B-13

Area
2130
+ 900
3030

Area 990
+ 312
1302

55 x 18 B-14

B-15
A = 380'²

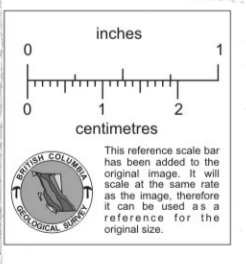
B-16
A = 523'²

B-17
A = 780'²

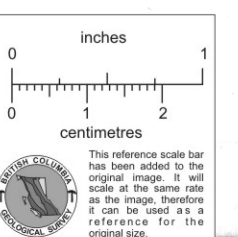
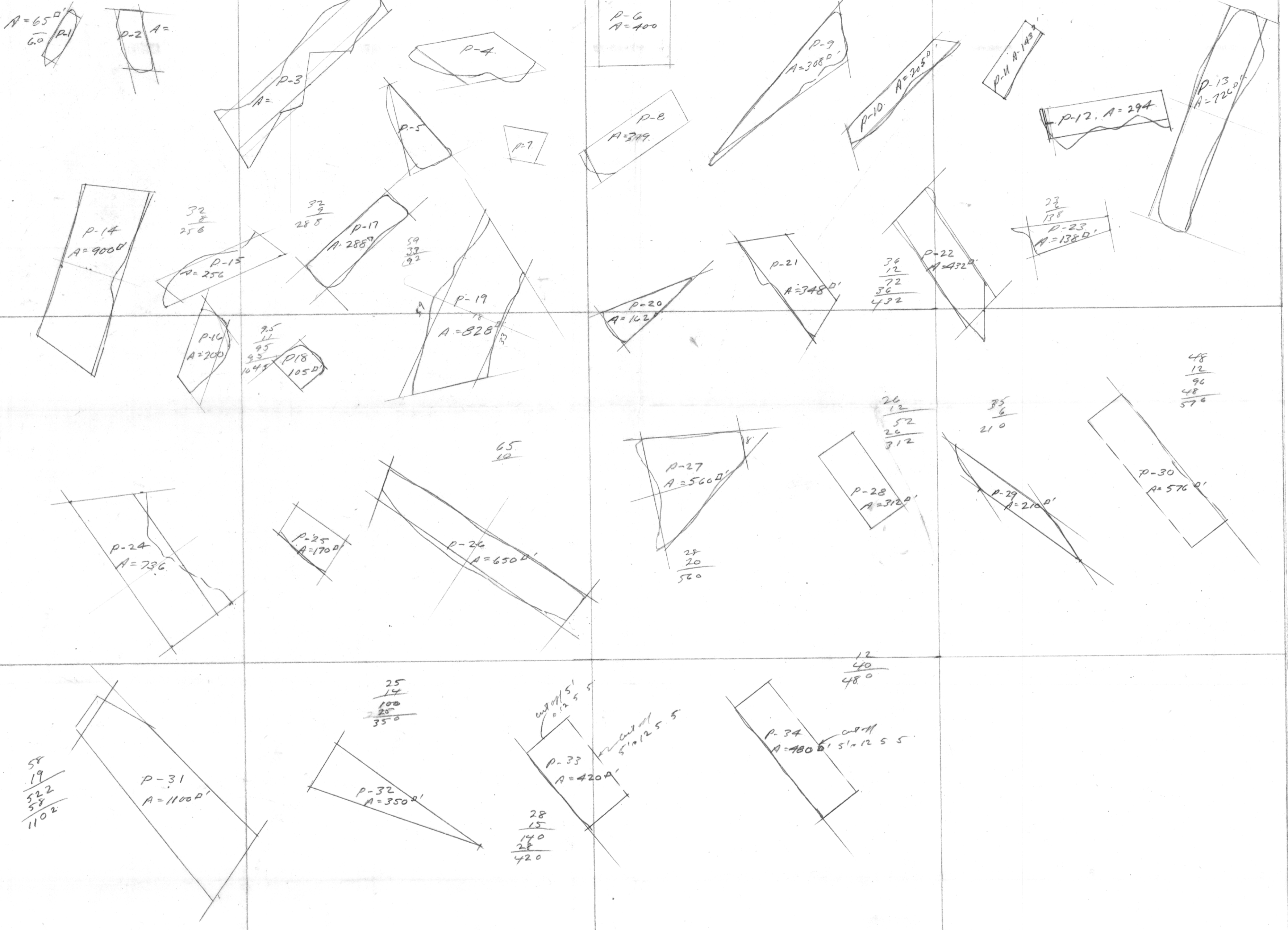
B-19
A = 17' x 40'
680'²

B-18
27.5 x 11

B-20 Area = 95' x 9
855'²



This reference scale bar has been added to the original image. It will scale at the same rate as the image, therefore it can be used as a reference for the original size.



1:1000

1:1000

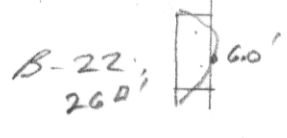
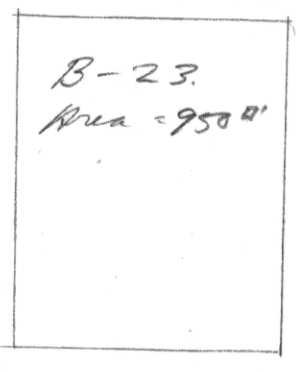
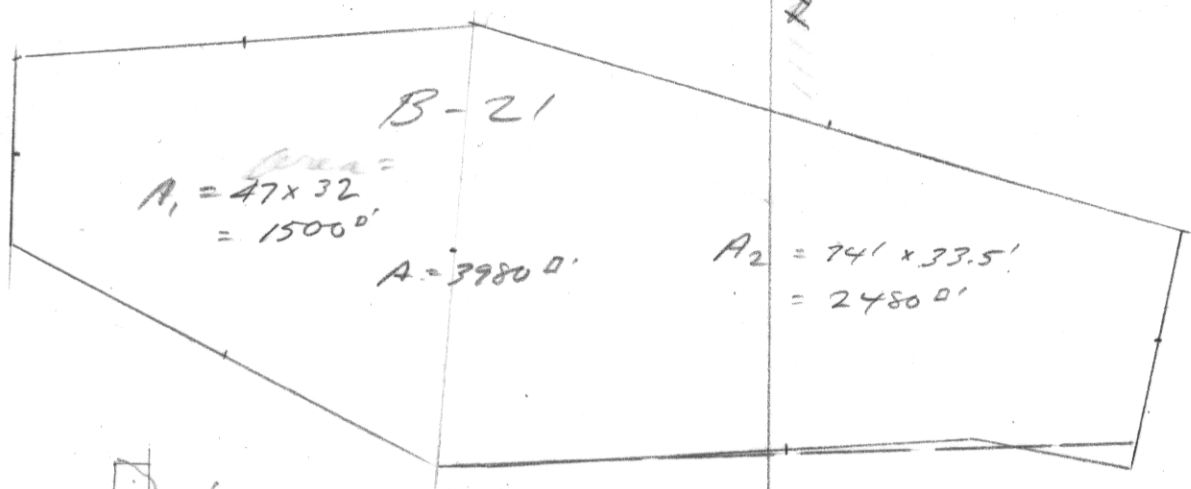
1:1000

1:1000

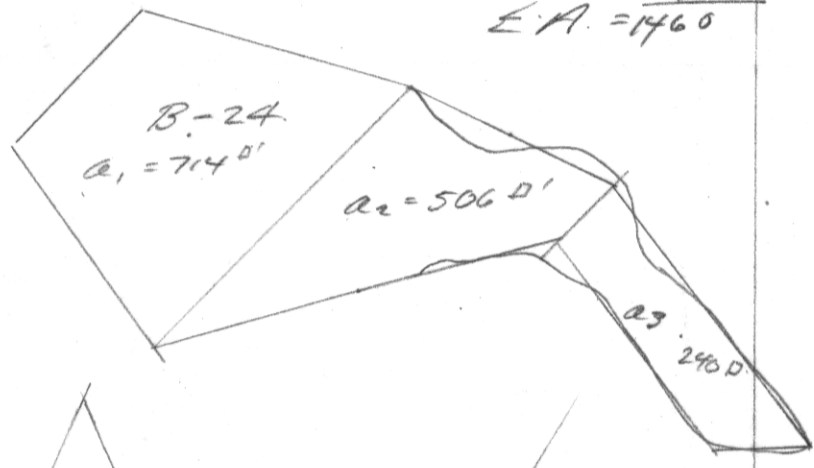
NORTH

2480.
1500
3980

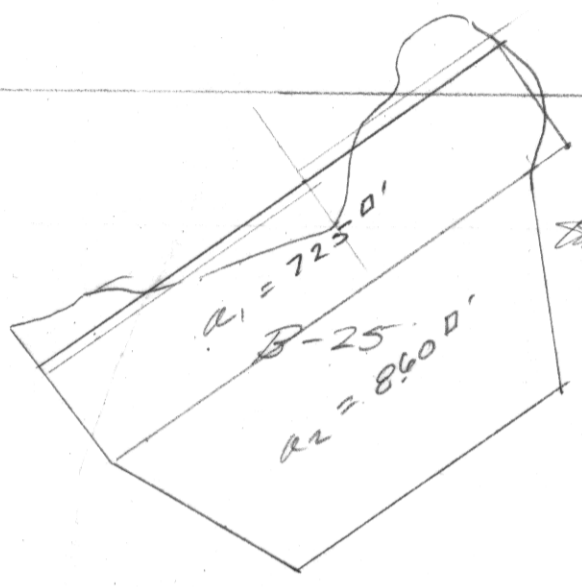
NORTH



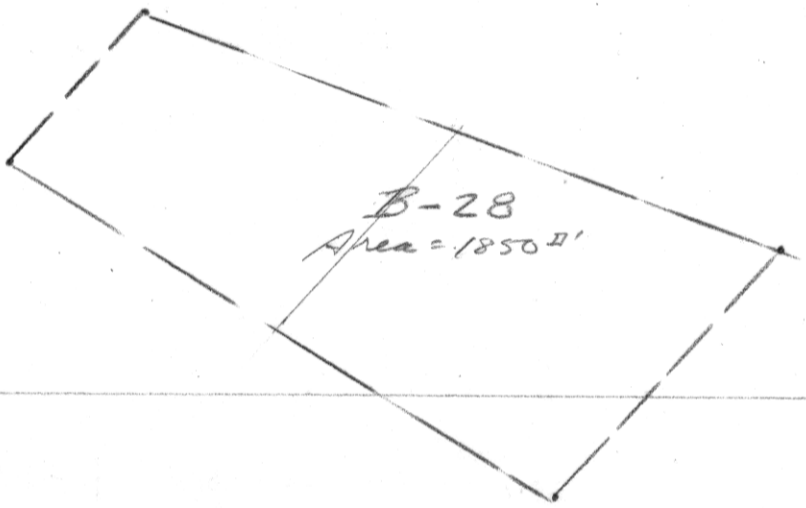
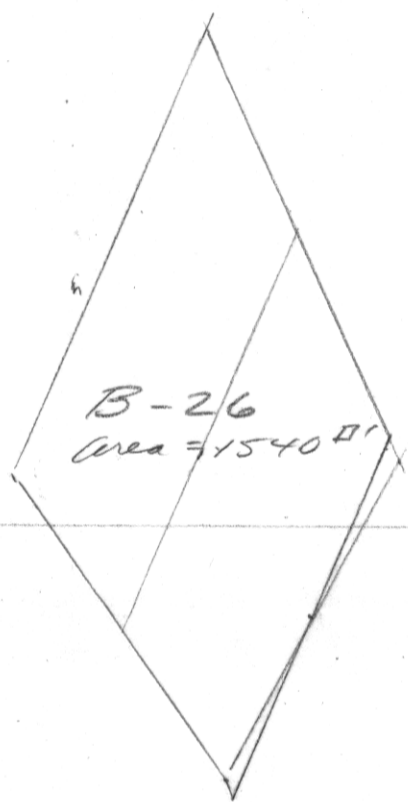
714
506
240
E.A. = 1460



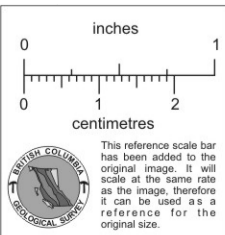
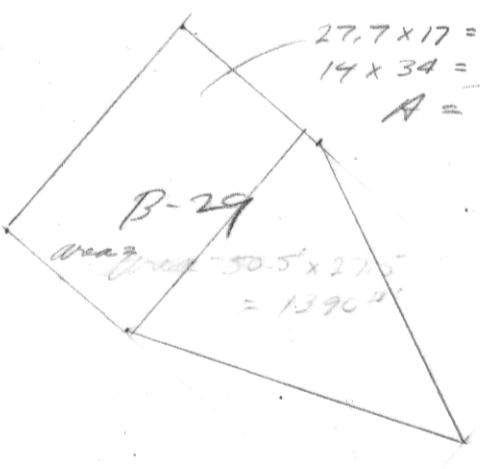
725
860
1585
E.A. = 1585

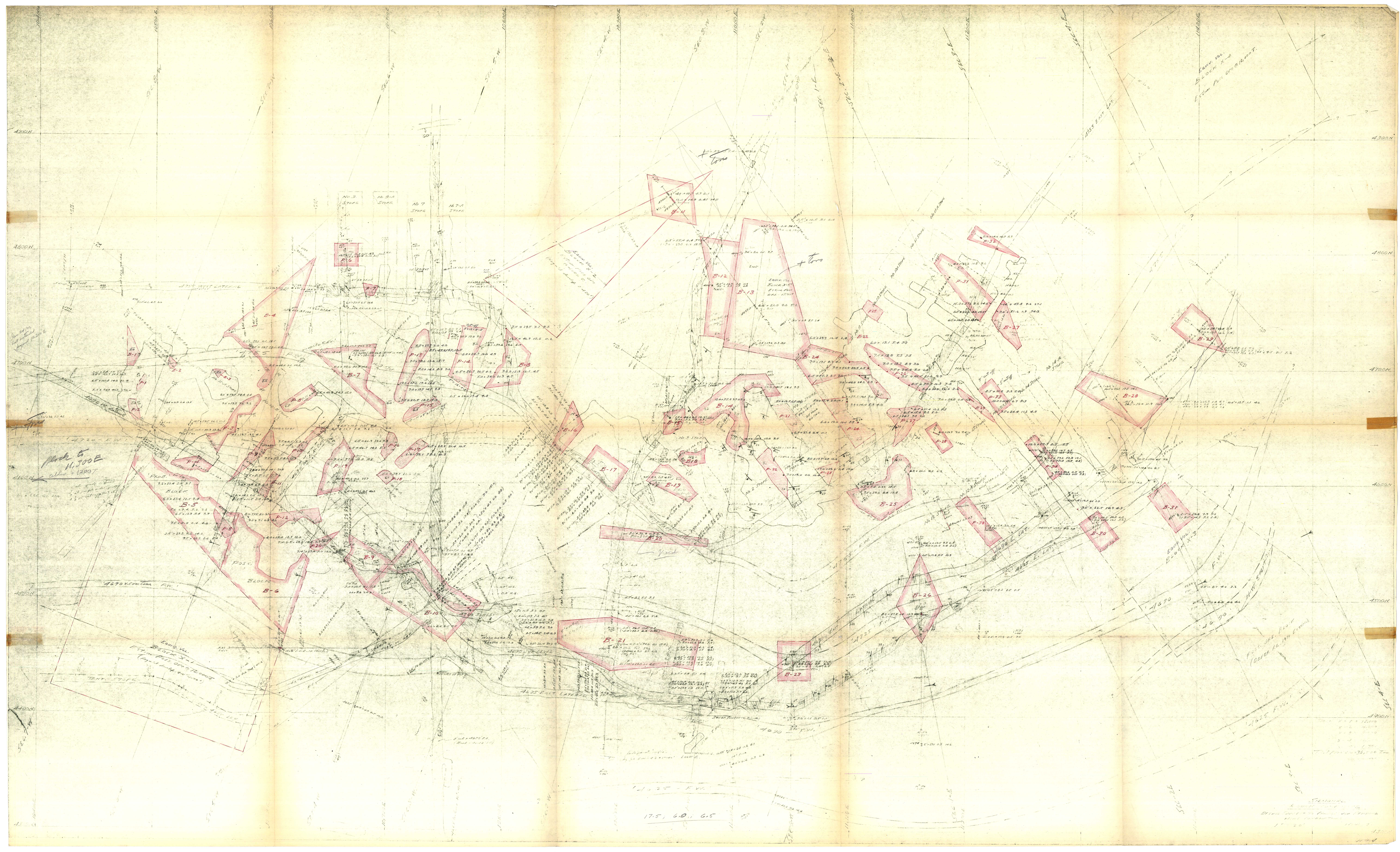


706
- 233
- 473



27.7 x 17 = 472
14 x 34 = 475
A = 947





Hand to
11,300E
also + 1200'

17.5, 6.0, 6.5

From Vol.
Block 5
From Part 1 of 12, 1907.

SEVEN
DRAWN BY
1907