

Suggested maps to be prep for manufacture:

- (a) 2 linears to cover East + West upper areas, incl d.d.k.
- (b) X-Secs O-E & 600E
incl re 4625 E area
and to follow up on hole pattern interpretations.

TEL: BUS. 987-5322
RES: 987-9520

WILLIAM M. SHARP, M.A.Sc., P.Eng.
CONSULTING GEOLOGICAL ENGINEER
171 W. ESPLANADE, NORTH VANCOUVER, B.C.

801159
Silmonac

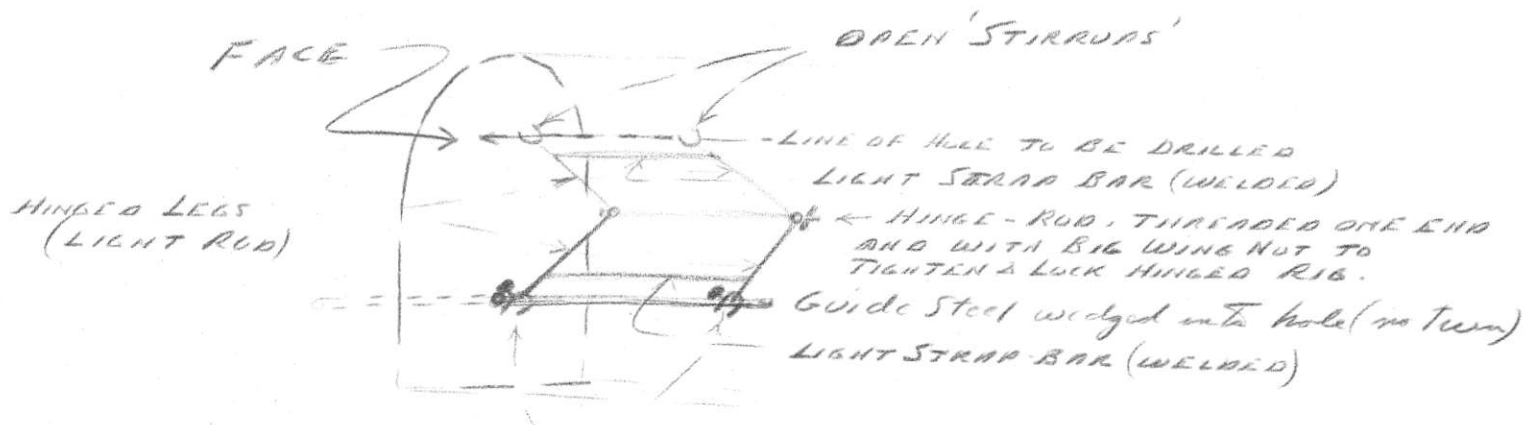
JULY 25/73

DEAR BILL:

DURING OUR CONVERSATIONS YESTERDAY, GRAHAM ASKED THAT I SEND YOU WHATEVER PRINTS ARE REQUIRED TO ENSURE THAT YOU AND HE HAVE SIMILAR SETS OF DRAWINGS; HENCE THE ENCLOSED TO SUPPLEMENT THE PRINTS YOU MADE, AND HAVE AT YOUR OFFICE.

YOU WILL NATURALLY REALIZE THAT THE LARGE MAP WILL BE SUBJECT TO REVISION, OR GENERAL SHARPENING UP AS DECLINE AND DRILL RESULTS ACCUMULATE. IT MIGHT EVEN BE A GOOD IDEA FOR YOU AND/OR DIRK TO WORK ONE UP YOURSELVES IN CONJUNCTION WITH THE PROPOSED SERIES OF CROSS-SECTIONS O-E — 600E — INCL.

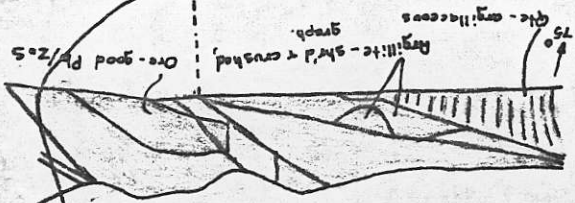
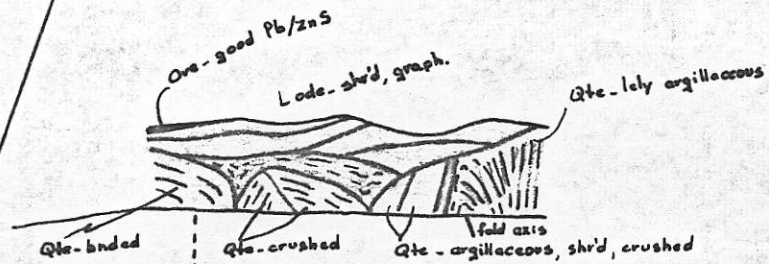
SORRY, BUT I WAS UNABLE TO LOCATE THE SKETCH OF THE JIG FOR DRILLING PARALLEL HOLES. HOWEVER, AS I REMEMBER IT, IT WAS BASICALLY AS FOLLOWS:



U-STIRRUPS WITH LARGE WING NUTS TO LOCK RIG ON TO GUIDE-STEEL.

Best regards. Bill Sharp

ENCL.



Strike of Lode N 55° W

Strike of Quartzite at Face N 27° W

4625 DECLINE

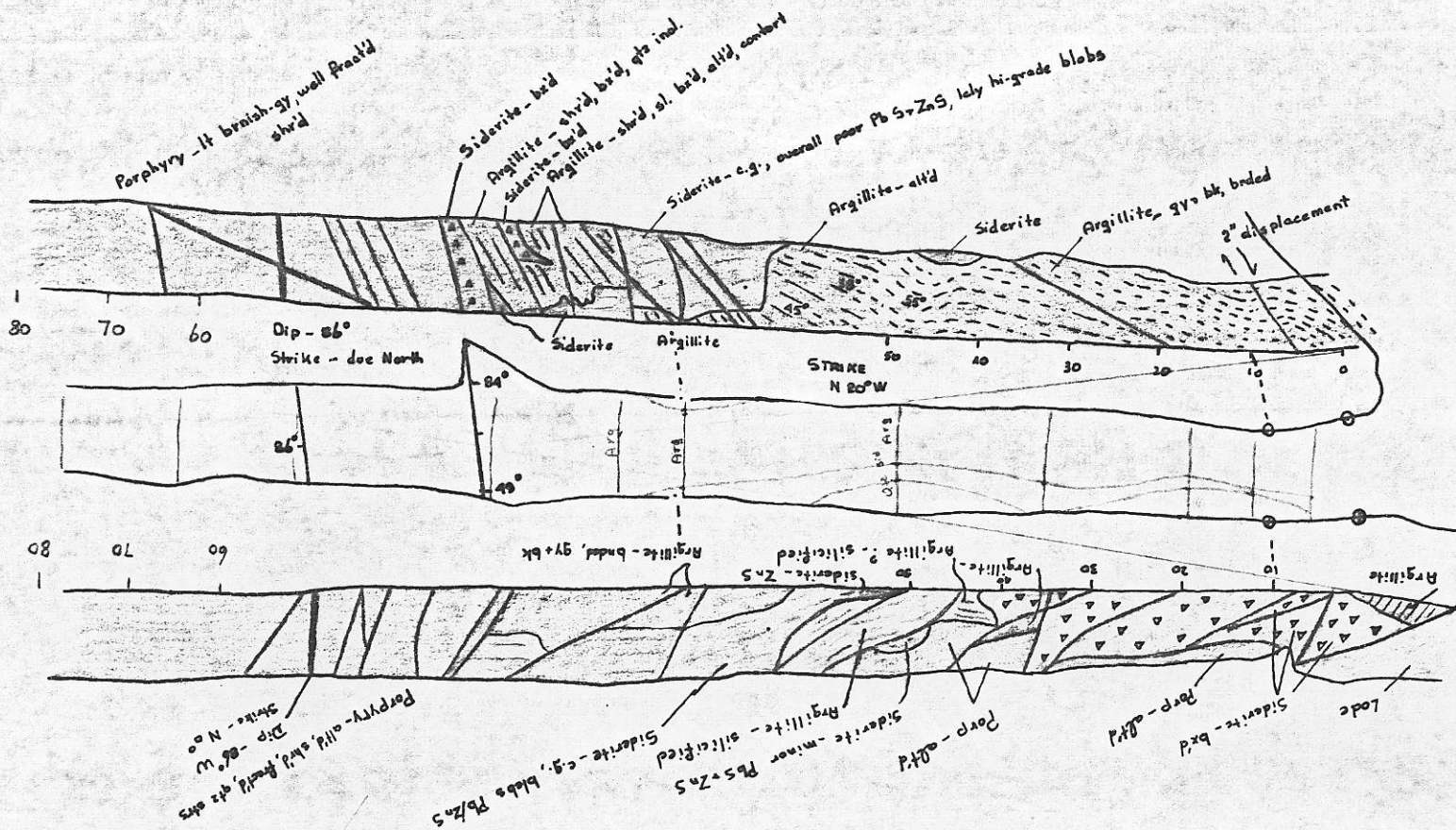
1" = 20'

July 18/73

DWR

4200 N

11,100 E



1300 N

RAMP - 4625

1" = 20'

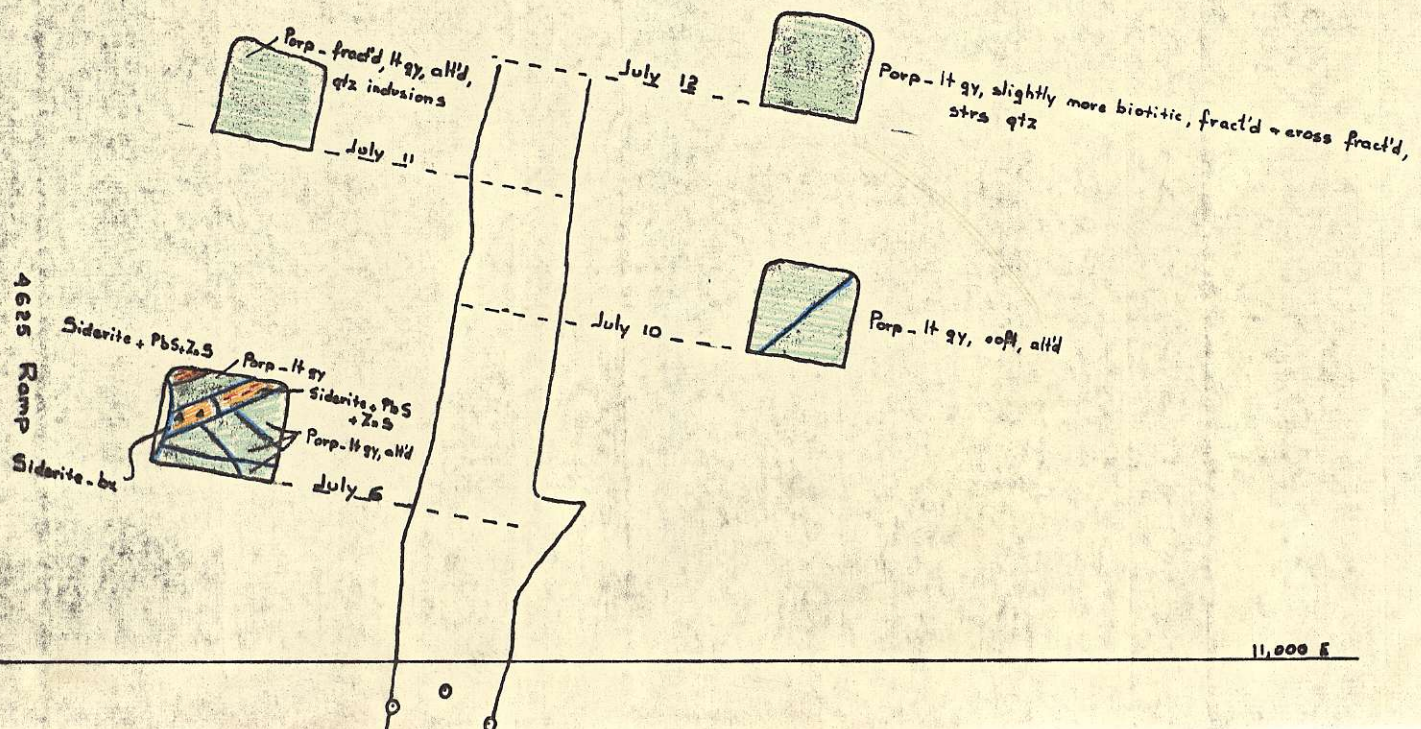
DWP

June - July/73

11,100 E

4625 Ramp
1" = 20'

DUP



4620N

Siderite - minor PbS + ZnS shrd
 July 4th
 MUCK K-18
 Argillite - bedded, graph
 Siderite - Pb, Zn
 Argillite - bedded, qtz sh
 June 28
 MUCK
 Siderite - ZnS
 Argillite - siliceous
 occ str qtz
 Br zone siderite ± ind.
 Pb, Zn
 Small fract's
 Arg. - bedded
 blue grey qtz
 Pb-ZnS along sh
 slip face
 local roll
 Bessy ind.
 Siderite
 + Pb-Zn ind.
 June 18-19
 Siderite, Pb-Zn ind.
 Pb-Zn to 6" along sh.

Siderite - pain to poor PbS, ZnS
 2" ZnS str along st.
 Argillite - altd
 MUCK
 Siderite - some bin, minor PbS
 Siderite along fracture ± PbS, ZnS
 Argillite - lt gy - dk gy, bedded
 Br zone siderite, qtz, arg.
 Siderite - bed, minor Pb-Zn along sh ± arg.
 Siderite - minor Pb-Zn
 Siderite - up to 6" good Pb-Zn
 Argillite - covered shrd
 Qtz - argillaceous
 Qtz along fault to 5'
 Lode Zone
 Lode - shrd, graph
 Qtz - argillaceous
 Lode - shrd, graph
 Qtz - argillaceous
 Lode
 Qtz - argillaceous, shrd, slabby
 chip sample across lode
 Lode - poor min, shrd + graph
 0.4, 0.85, 0.9
 Argillite - lt gy, arg
 Lode - shrd + graph
 Argillite - glauc
 Lode - shrd + graph
 Argillite - glauc
 Lode - shrd + graph