

501 - 7th. Street,
Nelson, B.C.,
April 16, 1969.

801073
SCRANTON-
SILVER STAR

W.M. Sharp,
Room 1, 425 Howe Street,
Vancouver 1, B.C.

Dear Bill:

I am enclosing survey records of new stations
59-9, 59-10 and 59-11 and present face. Also enclosed
is a tracing of drift detail. This will enable you to
bring your map up to date.

Sincerely,

Bill Blair

W.B. Blair.

B.S.	Sta.	F.S.	Hor. Angle	Azimuth	Bearing	Hor. Dist.	Vert. Angle	H.I.	H.P.	Latitude		Departure		Elev. Sta.	Elev. Rail	Sta.
										N	S	E	W			
59-7	59-8	59-9	168-08-40	218-17-10	S.38-17-10W	92.32	0	2.30	2.29		72.46		57.20	5889.08	5882.51	59-9
59-8	59-9	59-10	184-07-15	222-24-25	S.42-24-25W	78.99	0	1.95	3.33		58.33		53.27	5890.46	5882.88	59-10
59-9	59-10	59-11	179-00-45	221-25-20	S.41-25-20W	60.72	0	3.07	3.35		45.53		40.17	5890.74	5883.37	59-11
59-10	59-11	Fce.	207°-11'	248-36-10	S.68-36-00W	53.0	0				19.3		49.4			Fce.

8600 E

9200 N

9400 N

Fce - Dec. 13/68

59-11

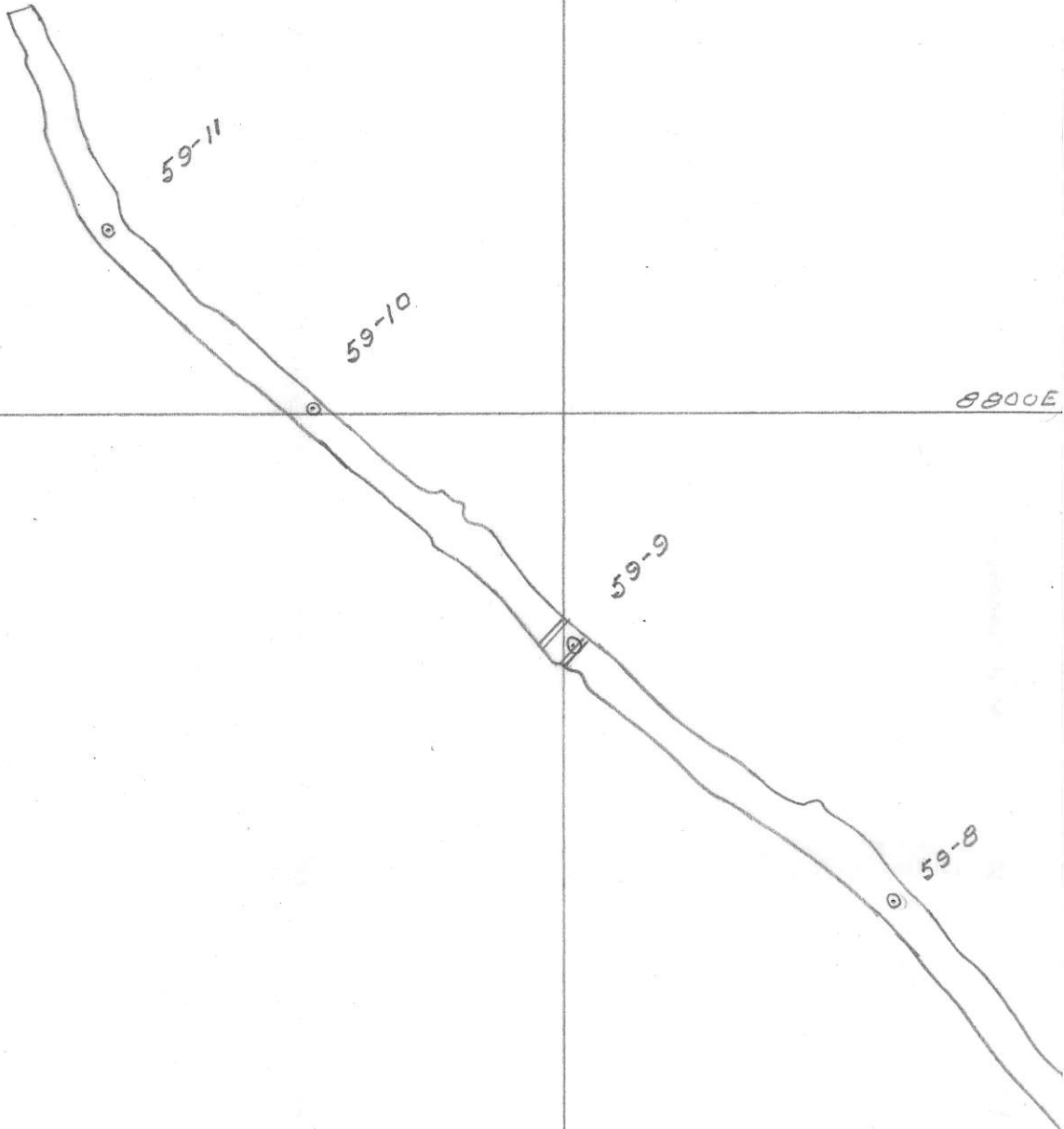
59-10

59-9

59-8

8800 E

9000 E

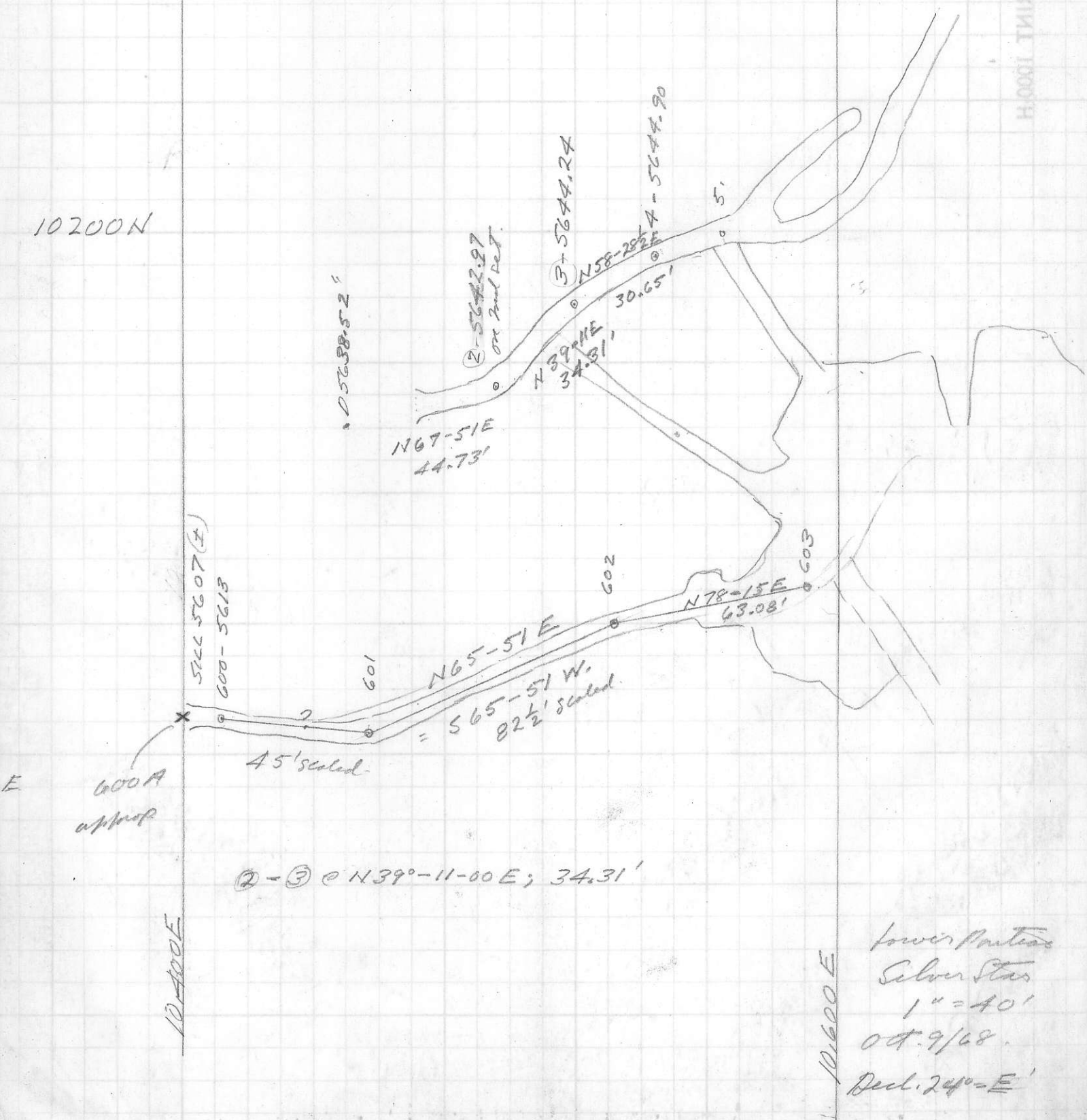


B.S. T. F.S.
 LKT-601-602-603 @ 192°-24'
 N78-15E
 ∴ 601-602 =

N78-15E
 = N77-75E
 - 12-24
 601-602 = N 65°-51' E

PRINTED ON CLEARPRINT 1000/H

10200N



② - ③ @ N39°-11-00 E; 34.31'

Lower Part of
 Silver Star
 1" = 40'
 Oct. 9/68.
 Decl. 24°-E'

Description Traverse - Sunset Main Level over Sunset Ridge

Sheet No. 1.

Date of Survey Aug 23 & Aug 30, 1953.

KOOTENAY MINING SERVICE
Yale Lead & Zinc Mines Limited

Mine SCRANTON CONSOLIDATED

Date Computed Aug 29, - Sep. - '53.

Level Surface

Surveyed by W.M.S. & M.A. Morris
ansaldo

AINSWORTH, B. C.

Sub-Level Decl. - 24° - 22' E.

H. M. WHIMSTER, PRINTER

Date	Sta.	Hor. Angle	Bearing	Slope Dist.	Vert. Angle	Vert. Dist.	H.I.	H.P.	H.T.	Elev. Track @ F.S.	Horizontal Distance	Latitude Cosine	Dep. Sine	TOTAL		Sta.	Elevation	Remarks
														Lat. N.	Dep. E.			
	702															702		Spads placed 700, 701, 702.
	701		N47-06-00E											9889.33	9945.17	701	5600.03	Old Dry 701-700 = N54-06-E.
		186-54-30	N54-00-30E	-	00-00	0.0	1.70	0.59		-5.45 5592.88	70.46	+41.41	+57.01					indic timber holding spad #700
	700													9930.74	10002.18	700	5598.92	has shifted since orig. survey.
		142-58-	N16-58-30E	57.00	-02-13	-2.20	1.46	0.00			56.96	+54.48	+16.63					
	1.													9985.22	10018.81	1.	5595.26	
		20-16-	S37-14-30W	147.36	+12-20-	+31.48	+2.31	0.0			143.96	-114.61	-87.12					
	2													9870.61	9931.69	2	5629.05	
		218-39-	S75-53-30W	114.02	+08-30-	+16.85	+2.70	0.0			112.77	-27.49	-109.37					
	3													9843.12	9822.32	3	5648.60	
		177-32-30	S73-26-00W	189.74	+12-52-	+42.25	+2.30	0.0			184.98	-53.03	-178.26					
	4													9790.09	9644.06	4	5693.15	
		178-21-30	S71-47-30W	193.54	+28-28-	+92.25	+2.67	0.0			170.14	-50.34	-162.52					
	5													9739.75	9481.54	5	5788.07	
		180-41-	S72-28-30W	195.33	+29-17-	+95.54	+2.75	0.0			170.37	-51.30	-162.46					
	6													9688.45	9319.08	6	5884.36	
		178-23-	S70-51-30W	93.28	+31-29-	+48.72	+1.88	0.0			79.55	-26.08	-75.15					
	7													9662.37	9243.93	7	5934.96	
		221-47-30	N67-21-00W	78.58	+29-54-	+39.17	+1.74	0.0			68.12	+26.23	-62.87					
	8													9688.60	9181.06	8	5975.87	
		90-31-30	S23-10-30W	94.38	+27-45-	+43.94	+2.02	0.0			83.53	-76.79	-32.87					
	9													9611.81	9148.19	9	6021.83	
		269-32-00	N67-17-30W	156.45	+34-55-	+89.55	+1.90	0.0			128.29	+49.52	-118.35					
	10													9661.33	9029.84	10	6113.28	
		134-41-00	S67-23-30W	95.25	+35-40-00	+55.54	+2.62	0.0			77.38	-29.75	-71.43					
	11													9631.58	8958.41	11	6171.44	
		132-49-30	S20-13-00W	90.13	+24-30-	+37.79	+1.57	0.0			82.92	-77.81	-28.65					
	12													9553.77	8929.76	12	6210.80	
		184-05	S24-18-00W	75.06	+29-52-00	+37.38	+1.91	0.0			65.09	-59.32	-26.79					
	13													9494.45	8902.97	13	6250.09	
		225-28-30	S69-46-30W	107.70	+33-15-00	+59.05	+2.32	0.0			90.07	-31.14	-84.53					
	14													9463.31	8818.44	14	6311.46	

Note Transposition of Coords. - Set old center of coords. @ 10000 N 10000 E. (i.e. 701 = $\frac{10,000.00 N}{9889.33 N}$ $\frac{10,000.00 E}{9945.17 E}$ & E.I. as prev. = 5600.03)

Description Traverse - Sunset Ridge cont'd

Sheet No. 2

Date of Survey Aug 23 & 30 '53

Mine SCRANTON CONSOLIDATED

Date Computed Sept. '53

Level Surface

Surveyed by WMS & M.A.

Yale Lead & Zinc Mines Limited

AINSWORTH, B. C.

H. M. WHIMSTER, PRINTER

Date	Sta.	Hor. Angle	Bearing	Slope Dist.	Vert. Angle	Vert. Dist.	H.I.	H.P.	H.T.	Elev. Track	Horizontal Distance	Latitude Cosine	Dep. Sine	TOTAL		Sta.	Elevation	Remarks
														Lat.	Dep.			
	13															13		
	14		569-46-30W											9463.31	8818.44	14	6311.46	
		201-53-	N88-20-30W	74.62	+34-58-	+42.76	+1.61	0.0			61.15	+1.69	-61.13					
	15		158-34-570-13-30W	131.10	+39-55-	+84.12	+2.10	0.0			100.55	-34.02	-94.62	9465.00	8757.31	15	6355.83	
	16		141-59-32 532-13-00W	106.56	+33-41-00	+59.10	+1.68	0.0			88.67	-75.02	-47.27	9430.98	8662.69	16	6442.05	
	17		244-02-30 N83-44-30W	50.42	+25-49-00	+21.96	+1.81	0.0			45.39	+4.95	-45.12	9355.96	8615.42	17	6502.83	
	18		104-46-521-01-30W	54.22	+33-32-00	+29.95	+2.02	0.0			45.20	-42.19	-16.22	9360.91	8570.30	18	6526.60	
	19		259-17-30 N79-41-00W	92.91	+31-01-00	+47.88	+2.20	0.0			79.63	+14.26	-78.34	9318.72	8554.08	19	6558.57	
	20		107-10-30 527-29-30W	58.55	+34-43-	+33.35	+1.60	0.0			48.13	-42.70	-22.21	9332.98	8475.74	20	6608.65	
	21		252-31- N79-59-30W	42.25	+30-20-	+21.34	+1.87	0.0			36.47	+6.34	-35.91	9290.28	8453.53	21	6643.60	Sta is 19' elev. above sill of old thru-drift. Sill El. 6625'
	22		95-48-30 515-49-00W	50.22	+30-21-	+25.38	+2.27	0.0			43.34	-41.70	-11.81	9296.62	8417.62	22	6666.81	
	23		269-57-30 N74-13-30W	57.92	+25-46-	+25.18	+1.87	0.0			52.16	+14.18	-50.20	9254.92	8405.81	23	6694.46	
	24		72-45-30 501-28-00E	39.80	-03-20-	-2.31	+2.27	0.0			39.73	-39.72	+1.02	9269.10	8355.61	24	6721.51	On top of ridge E. side.
	25		264-53-30 583-25-30W	51.25	-24-24-	-21.17	+1.72	0.0			46.67	-5.34	-46.66	9229.38	8356.63	25	6721.47	" " " " W " No 2 Post Grandview near #25
	26		139-21-30 542-47-00W	71.63	-32-26-	-38.42	+2.47	0.0			60.46	-44.37	-41.07	9224.04	8309.97	26	6702.02	"26-old raise 537E; 20'
	27		199-30- 562-17-00W	75.53	-39-40-	-48.21	+2.23	0.0			58.14	-27.04	-51.47	9179.67	8268.90	27	6666.07	Perman. Sta. Cored adit, El Sill #27-2'
	28		182-23-30 564-40-30W	72.22	-39-33-	-45.99	+2.36	0.0			55.69	-25.83	-50.33	9152.62	8217.43	28	6620.09	Adit brg. to N57E. Perman. Sta. SW Portal thru-drift. Sill @ A28-4. = 6616'
	29													9126.80	8167.10	29	6576.46	

Description Traverse Sunset Ridge & W. Workings

Sheet No. 3.

Date of Survey Aug 30, '53.

Yale Lead & Zinc Mines Limited

Mine SCRANTON CONSOLIDATED.

Date Computed Sept. '53

AINSWORTH, B. C.

Level SURFACE.

Surveyed by W.M.S. & M.A.

Sub-Level _____

H. M. WHIMSTER, PRINTER

Date	Sta.	Hor. Angle	Bearing	Slope Dist.	Vert. Angle	Vert. Dist.	H.I.	H.P.	H.T.	Elev. Track	Horizontal Distance	Latitude Cosine	Dep. Sine	TOTAL		Sta.	Elevation	Remarks
														Lat.	Dep.			
	28															28		
	29		564-40-30W											9126.80	8167.10	29	6576.46	
	29	214-29-	N80-50-30W	102.68	29-56-	51.24	+2.20	0.0		✓	88.98	+14.19	-87.85					
	30	119-19-30	S38-29-00W	149.45	19-43-	50.42	+2.03	0.0		✓	140.69	-110.13	-87.55	9140.99	8079.25	30	6527.42	#30 to lower portal @ 547E; 45'
	31	188-18-30	S46-47-30W	136.10	08-15-	19.53	+1.88	0.0		✓	134.69	-92.21	-98.07	9030.86	7991.70	31	6479.03	In basin
	32	154-27-30	S21-15-00W	154.37	03-14-	8.71	+1.82	0.0		✓	154.12	-143.64	-55.86	8938.65	7893.63	32	6461.38	" "
	33	215-20-	S56-35-00W	200.32	+03-11	+11.12	+1.69	0.0		✓	200.01	-110.15	-166.95	8795.01	7837.77	33	6454.49	" "
	34	163-37-	S40-12-00W	190.00	+21-44-	+70.35	+1.95	0.0			176.49	-734.80	-113.92	8684.86	7670.82	34	6467.30	On edge dump of SW edit.
	35													8550.06	7556.90	35	6539.60	Near top of old raise.
	32															32		
	33		S21-15-00W											8795.01	7837.77	33	6454.49	
	33A	10-14-00	N31-29-00E	68.35	+00-37-00	+0.74	+1.99	0.0			68.35	+58.29	+35.70	8853.30	7873.47	33A	6457.22	Perm. hub in Sunset Basin
	33B	37-21-30	S68-50-30W	68.57	08-36-00	-10.25	+2.50	0.0			67.80	-24.47	-63.23	8828.83	7810.24	33B	6449.47	" " " " "

Description Sunset - Pontiac Tie, Pontiac Adg'l

Sheet No. 4

Date of Survey July 10, 1954

SCRANTON per K.M.S.

Mine SCRANTON-PONTIAC

Date Computed July 12, 1954

Yale Lead & Zinc Mines Limited

Level _____

Surveyed by W.M.S. & P.P.

AINSWORTH, B. C.

Sub-Level _____

H. M. WHIMSTER, PRINTER

B.S.	Date S.V.	Sta. F.S.	Hor. Angle RT	Bearing	Slope Dist.	Vert. Angle	Vert. Dist.	H.I.	H.P.	H.T.	Elev. Track	Horizontal Distance	Latitude Cosine	Dep. Sine	TOTAL		Sta.	Elevation	Remarks
															Lat.	Dep.			
	702	701		N47-06-00E															
702	701	700	186-57	N54-03-00E											9930.74	10002.18	700	5598.92	Outer Sta of Sunset main lev.
701	700	700A	173-28	N47-31-00E	122.08	01-55	-4.08	7.32	0.00			122.01	+82.40	+89.98	10013.14	10092.16	700A	5593.52	
700	700A	700B	227-27-30	S85-01-30E	150.38	+04-29	+11.76	+2.14	0.00			149.92	-13.00	+149.36	10000.14	10241.52	B	5607.42	
700A	700B	700C	159-15	N74-13-30E	191.85	+08-11	+27.31	+2.35	0.00			189.90	+51.63	+182.75	10051.77	10424.27	C	5637.08	
700B	700C	700D	125-05	N19-18-30E	90.47	00-27	-0.71	+2.15	0.00			90.47	+85.38	+29.91	10137.15	10454.18	D	5638.52	
700C	700D	^{Pontiac} #2	228-32-30	N67-51-00E	44.73	00-12	+0.16	+2.24	+2.05	4.05	5636.81	44.73	+16.86	+41.43	10154.01	10495.61	2	5642.97	On 2nd set Pontiac upper level.
700D	2	3	151-20	N39-11-00E		00-00		7.25	+2.52	4.50	5637.22	34.31	+26.59	+21.68	10180.60	10517.29	3	5644.24	
2	3	4	199-17-30	N58-28-30E		00-00		2.00	+2.66	3.05	5637.19	30.65	+16.03	+26.13	10196.63	10543.42	4	5644.90	
3	4	5A	200-38-30	N79-07-00E		00-00		2.75	+2.58	4.75	5637.40	25.21	+4.76	+24.76	10201.39	10568.18	5A	5644.73	
4	5A	5B	144-58	N44-05-00E		00-00		2.86	+3.20	4.57	5637.30	48.60	+34.91	+33.81	10236.30	10601.99	5B	5645.07	free Sta @ 5B+8'
4	5A	6A	181-48	N80-55-00E		00-00		2.86	+2.75	4.50	5638.37	32.29	+5.10	+31.89	10206.49	10600.97	6A	5644.62	
5A	6A	7	140-51	N41-46-00E		00-00		1.90	+1.61	3.10	5639.23	17.17	+12.81	+11.44	10219.30	10611.51	7	5644.33	
6A	7	8	156-36	N18-22-00E		00-00		2.11	+2.61	4.78	5637.44	34.81	+37.04	+10.97	10252.34	10622.48	8	5644.83	
	700C	700D		N19-18-E											10137.15	10454.18	700D	5638.52	
700C	700D	P-1	210-53	N50-11-E	92.66	+16-27	+26.24	+2.11	0.0	-3.0		88.87	+56.91	+68.26	10194.06	10522.44	P-1	5666.87	
700D	P-1	P-2	170-44	N40-55-E	105.88	+10-30-30	+19.54	+2.23	0.0			104.10	+78.66	+68.18	10272.72	10590.62	P-2	5688.64	
P-1	P-2	P-3	171-41	N32-36-E	70.75	+06-16	+7.72	+1.76	0.0			70.33	+59.25	+37.89	10331.97	10628.51	P-3	5698.12	
P-2	P-3	P-4	190-57	N43-33-E	113.06	+16-04-30	+31.31	+2.05	0.0			108.64	+78.74	+74.85	10410.71	10703.36	P-4	5731.48	
P-3	P-4	P-5	178-29	N42-02-E	57.57	+12-27-30	+12.42	+2.15	0.0			56.19	+41.73	+37.62	10452.44	10740.98	P-5	5746.05	
P-4	P-5	P-6	189-49	N51-51-E	147.64	+21-19	+53.67	+2.16	0.0			137.54	+84.96	+108.16	10537.40	10849.14	P-6	5801.88	@ No. 1 o.c.
P-5	P-6	P-7	179-56	N51-47-E	95.16	+20-08	+32.75	+2.19	0.0			89.35	+55.28	+70.20	10592.68	10919.34	P-7	5836.82	@ No. 2 o.c.
P-6	P-7	P-8	173-14	N45-01-E	100.23	+16-19	+28.16	+1.93	0.0			96.19	+68.00	+68.03	10660.68	10987.37	P-8	5866.91	@ No. 5 o.c.
P-7	P-8	P-9	170-51	N35-52-E	138.74	+07-45	+18.71	+1.80	0.0			137.47	+110.40	+80.54	10776.08	11067.91	P-9	5887.42	
P-8	P-9	P-10	182-06	N37-58-E	52.09	+19-45-30	+17.61	+2.14	0.0			49.02	+38.65	+30.16	10809.73	11098.07	P-10	5907.17	@ No. 7 o.c.
P-9	P-10	P-11	241-53-30	S80-09-E	112.80	+37-44-30	+69.04	+1.95	0.0			89.21	-15.26	+87.90	10794.47	11185.97	P-11	5978.16	
P-10	P-11	P-12	210-11	S49-58-E	37.51	+31-28	+19.58	+1.98	0.0			31.99	-20.58	+24.99	10773.89	11210.46	P-12	5999.72	@ No. 8 o.c.
P-11	P-12	P-13	113-12	N63-14-E	42.51	+17-44	+12.95	+2.16	0.0			40.49	+18.24	+36.15	10792.13	11246.61	P-13	6014.83	
P-12	P-13	P-14	270-14	S26-32-E	92.70	+21-15-30	+33.61	+2.70	0.0			86.39	-77.29	+38.59	10714.84	11285.20	P-14	6051.14	
P-13	P-14	P-15	90-01-30	N63-29-30E	81.20	+27-55	+38.02	+2.52	0.0			71.75	+32.02	+64.21	10746.86	11349.41	P-15	6091.68	@ No. 10 o.c.
P-14	P-15	P-16	264-49	S31-41-30E	25.86	+24-15	+10.62	+2.83	0.0			23.58	-20.06	+12.39	10726.80	11361.80	P-16	6105.13	Perm A on stump above o.c. #10
P-15	P-16	P-17	100-45-30	N69-04-00E	35.28	+35-34-30	+20.52	+2.20	0.0			28.70	+10.24	+26.81	10737.04	11388.61	P-17	6127.85	" " " " " "

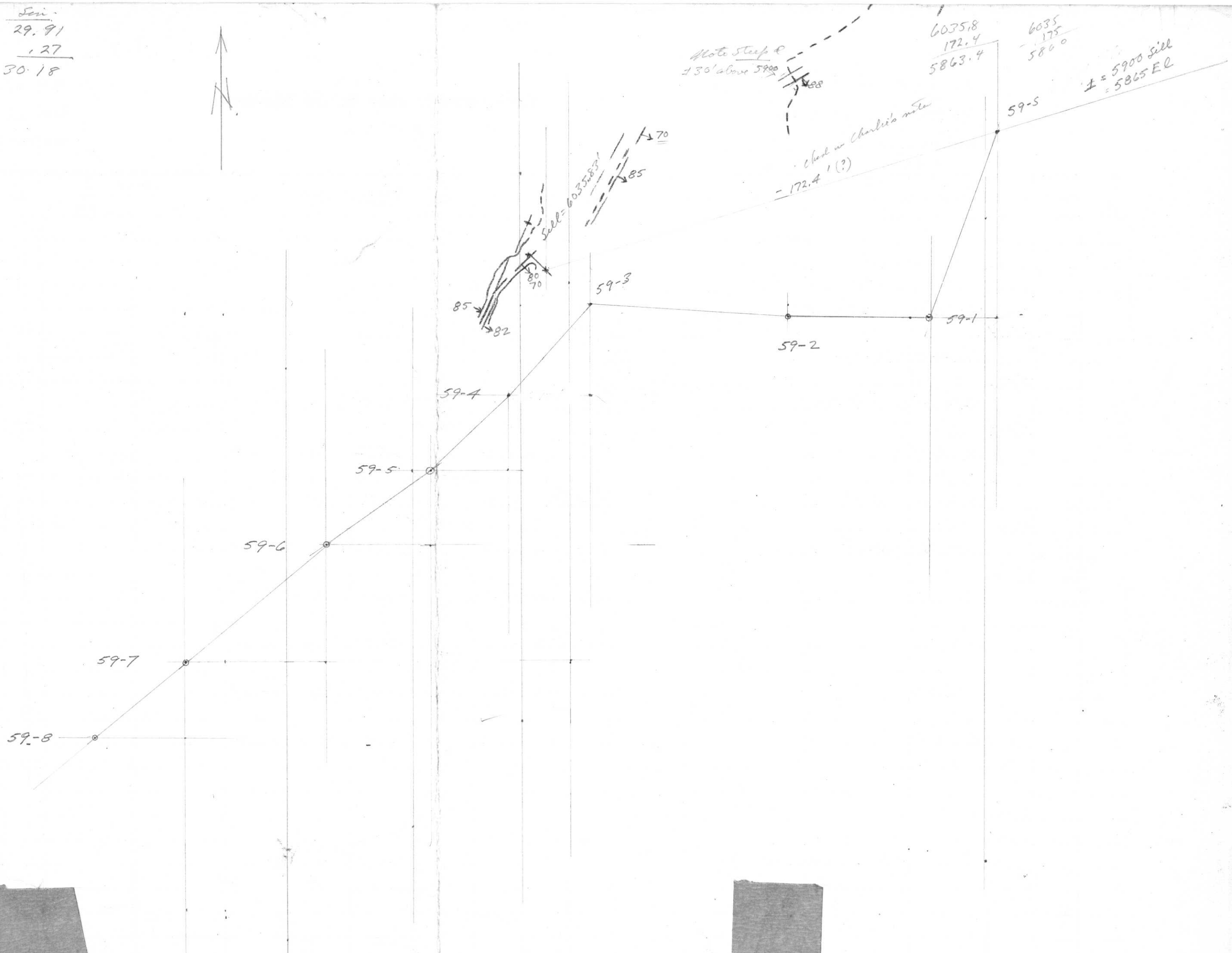
drop 00-00-30
NE + add
@ P10-P11.

Bad error
N73-14-E
re calc all
lat & dep
from here to
and replat
geometry on
survey

$$5.19 - 11\frac{1}{2} - 91.83 = 85.94$$

$$.83 = \frac{.78}{86.72}$$

$$\frac{29.91}{.27} = 30.18$$



Description _____

Sheet No. 6.

Date of Survey SEPT. 27 - 1969

Mine SILVER STAR - SCRANTON.

Date Computed _____

~~Yule Lead & Zinc Mines Limited~~

Level 5900

Surveyed by TO 59-B BY W.M.S. FROM 59-B TO 59-11 BY W.B. BLAIR.

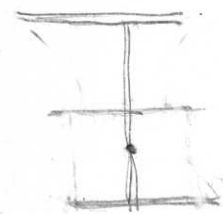
AINSWORTH, B. C.

Sub-Level _____

H. M. WHIMSTER, PRINTER

Date	Sta.	Hor. Angle	Bearing	Slope Dist.	Vert. Angle	Vert. Dist.	H.I.	H.P.	H.T.	Elev. Track	Horizontal Distance	Latitude Cosine	Dep. Sine	TOTAL		Sta.	Elevation	Remarks
														Lat.	Dep.			
	59-7																	
<i>W.B. BLAIR APR. 3/69</i>	59-8	-	^S 50-08-30 ^W											9470.56	8909.35	59-8	5889.09	
			^S 168-08-40 ^W 38-17-10	-	0°	-	- 2.30	+ 2.29			92.32	- 72.46	- 57.20					
	59-9		^S 184-07-15 ^W 542-24-25	-	0°	-	- 1.95	+ 3.33			78.99	- 58.33	- 53.27	9398.10	8852.15	59-9	5889.08	
	59-10		^S 180-00-20 ^W 42-24-45	-	0°	-	- 3.01	+ 2.88			59.38	- 43.84	- 40.05	9339.77	8798.88	59-10	5890.46	
	59-12		^S 202-55-00 ^W 65-19-45	-	0°	-	- 2.58	+ 4.35			67.10	- 28.01	- 60.98	9295.93	8758.83	59-12	5890.33	
	59-13													9267.92	8697.85	59-13	5892.10	

57-1 - 57-3
- 57-4.26



Description

Sheet No. 7

Date of Survey ^{W. BLAIR} APRIL 30/69; ^{W. SHARP} SEPT. 27/69

Mine SILVER STAR - SCRANTON

Date Computed OCT. 15/69

Level 5700

Surveyed by ^{W. BLAIR TO A 57-9} W. SHARP TO A 57-14. WILD TI-A.

AINSWORTH, B. C.

Sub-Level

H. M. WHIMSTER, PRINTER

* Ref. 57-1 @ 9884.00 N ; 9633.00 W

Date	Sta.	Hor. Angle	Bearing	Slope Dist.	Vert. Angle	Vert. Dist.	H.I.	H.P.	H.T.	Elev. Track @ F.S.	Horizontal Distance	Latitude Cosine	Dep. Sine	TOTAL		Sta.	Elevation	Remarks
														Lat.	Dep.			
	57-1		83-42-30	-	0°	-	2.52	3.42	-	-	47.57	5.21	47.28			57-1	5669.92	
	57-3		43-19-05	-	0°	-	2.33	1.85	-	5663.49	50.84	36.99	34.88	9878.79	9585.72	57-3	5670.82	
	57-4		00-26-55	56.40	+ 0-20-40	+ 0.34	1.91	4.00		5664.75	56.40	56.40	+ 0.44	9841.80	9550.84	57-4	5670.34	
	57-5		48-11-55	-	0°	-	3.38	4.40		5665.20	48.49	32.32	36.15	9785.40	9551.28	57-5	5672.77	
	57-6		60-35-18	85.14	+ 0-10-20	+ 0.26	3.58	3.40		5665.96	85.14	41.81	74.14	9753.08	9515.13	57-6	5673.79	
	57-7		58-28-48	-	0°	-	2.93	3.42		5666.63	89.63	46.86	76.41	9711.27	9440.99	57-7	5673.87	
	57-8		55-33-03	-	0°	-	2.40	2.75		5667.01	87.13	49.29	71.85	9664.41	9364.58	57-8	5674.36	
SEPT. 27/69 By W.M.S.	57-9		54-50-23	105.45	0°	-	2.90	4.45	3.60	5668.21	105.45	60.73	86.21	9615.12	9292.73	57-9	5674.71	
	57-10		55-17-03	51.75	0°	-	3.12	4.90	3.75	5669.39	51.75	29.47	42.54	9554.39	9206.52	57-10	5676.26	
	57-11		37-03-23	99.50	0°	-	3.72	3.75	3.65	5670.67	99.50	79.41	59.96	9524.92	9163.98	57-11	5678.04	
	57-12		46-05-23	93.87	0°	-	2.57	3.93	3.95	5671.55	93.87	65.11	67.63	9445.51	9104.02	57-12	5678.07	
	57-13		45-55-23	76.66			2.83	3.72	muck		76.66	53.33	55.07	9380.40	9036.39	57-13	5679.43	
	57-14													9327.07	8981.32	57-14	5680.32	