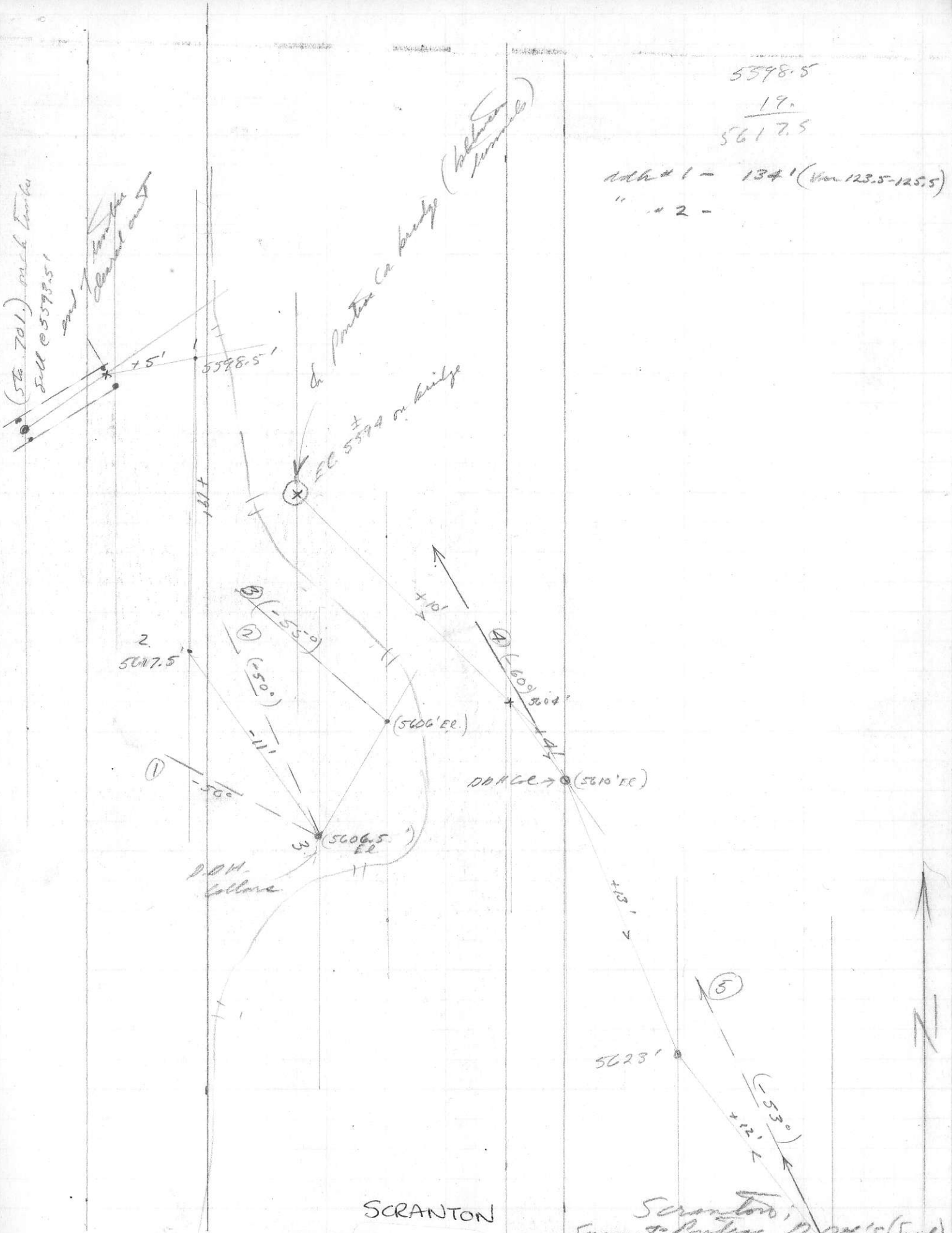


(Sta. 701) back Lumber
 Fall @ 5598.5'
 and 7' lower
 channel and 5'

5598.5
 19.
 5617.5

add #1 - 134' (from 123.5-125.5)
 " #2 -

to Pontiac Co bridge (between
 piers)
 EC 5594 on bridge



SCRANTON

801055

Scranton,
 Sunset Pontiac Co. D.M. (S. Surf.)
 Aug 19/67, 5635' @ 12° 40'
 W.S. & C.B.

Drill-hole Intersections

June 2/67

* Searset - Pontiac link - per E.B. record.

Hole #	Sample	Ree	Pg	Pb	Zn	Incl.	Total length
① ✓	4' ^{2.0'} 123.5-125.5	0.60	4.0	2%	4%	-50°	134'
② ✓	2' (prof. #1) ^{Not given}	.02	0.7	2%	0.4%	-50°	approx 150'
③ ✓	7' 114'-121'	0.12	1.9	0.6%	0.6%	-55°	167' +
④ ✓	4' 140-142.5	0.04	0.7	0.7%	0.5%	-60°	170'
⑤	- not relevant + too far in h.w. to hope to reach vein)						

June 16/67

Ed Pump advises C. Link has advised vein that he intersected 2' of significantly-mineralized vein material during the most recent period of deep access road construction at +100' below the 6040 pithead area and that the vein does not appear to split or fray as we had been led to believe earlier prior to this advice.

Equip:

E.B. plan use Blue Star equip.

500 cf. bit. / (4-eye) in op. comb.

365 cf. / G.M. diesel

(The 500 uses less fuel.)

100 cf. m. also avail.

Also considering change that equip should be modified for 24" gauge. O.K. - if cost not excessive; W.S. Morrison see Rosedale Machine Shop. and for George Green of Nelson Machinery

incl section

920

495

150

360

100

2025

580

340

495

100

400

1975

Partners -

Partners

Partners

Partners

Partners

Partners

Partners

Partners

Partners

Partners

Partners

Partners

Partners

Partners

Partners

Partners

Partners

Partners

Partners

Partners

Partners

Partners

Partners