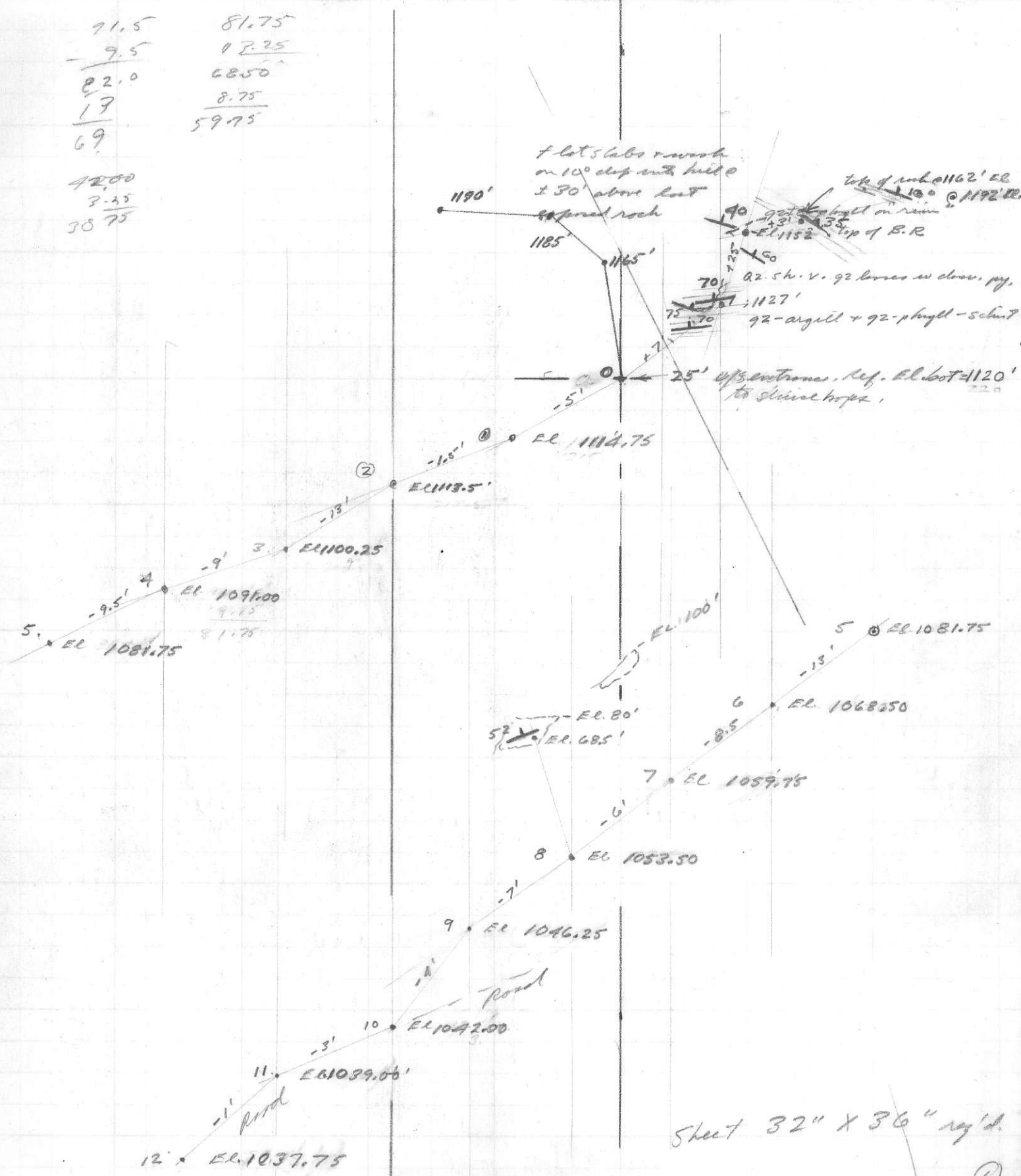


91.5	81.75
<u>9.5</u>	<u>17.25</u>
82.0	68.50
<u>17</u>	<u>8.75</u>
69	59.75

4200
<u>3.55</u>
3875

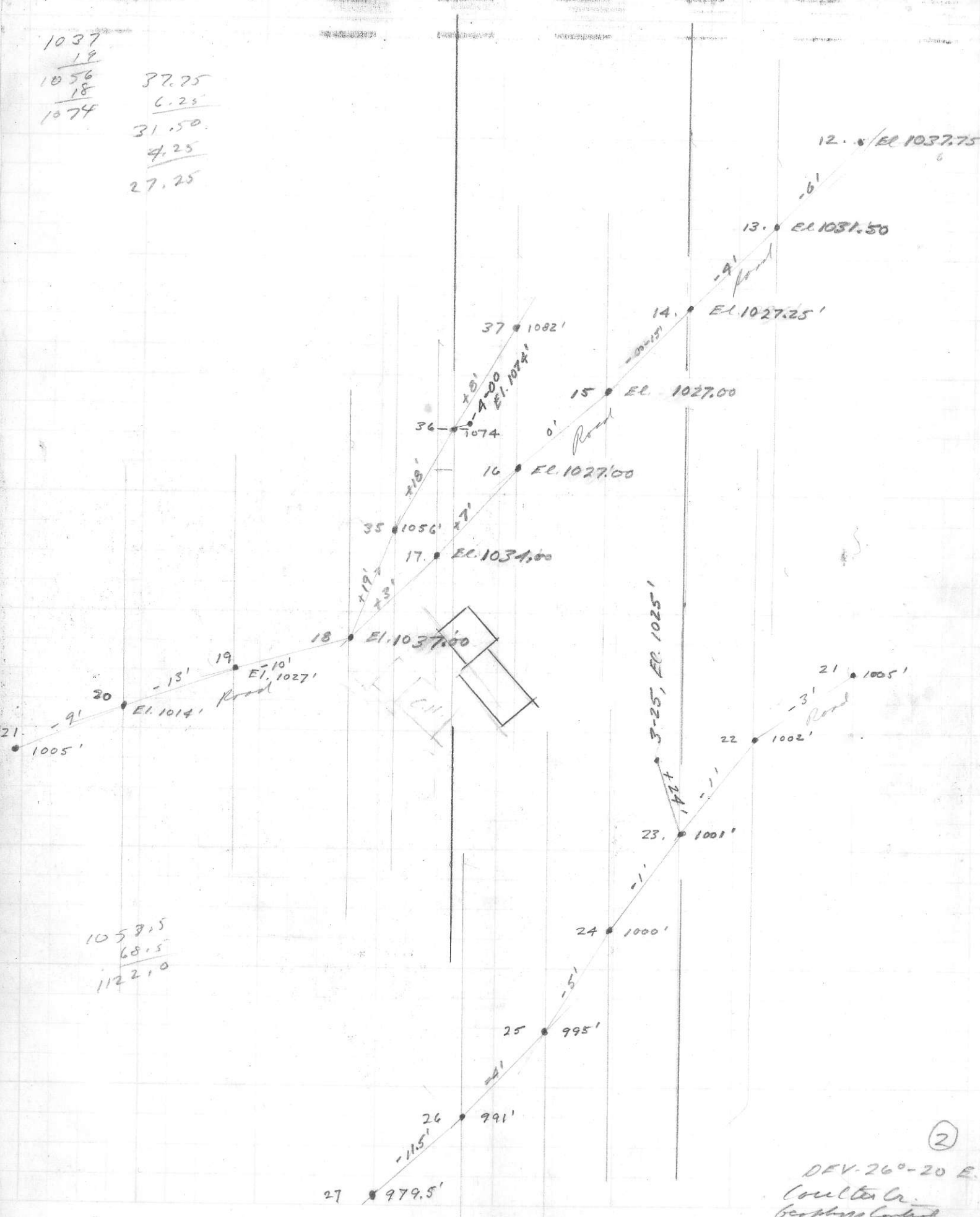


Sheet 32" x 36" sq'd.

801020

DU. 26°-20' E  
 COULTER CR  
 GEOPHYS CONTROL  
 1" = 100' 7/24/65

1037  
 19  
 1056 37.25  
 18 6.25  
 1074 31.50  
 4.25  
 27.25



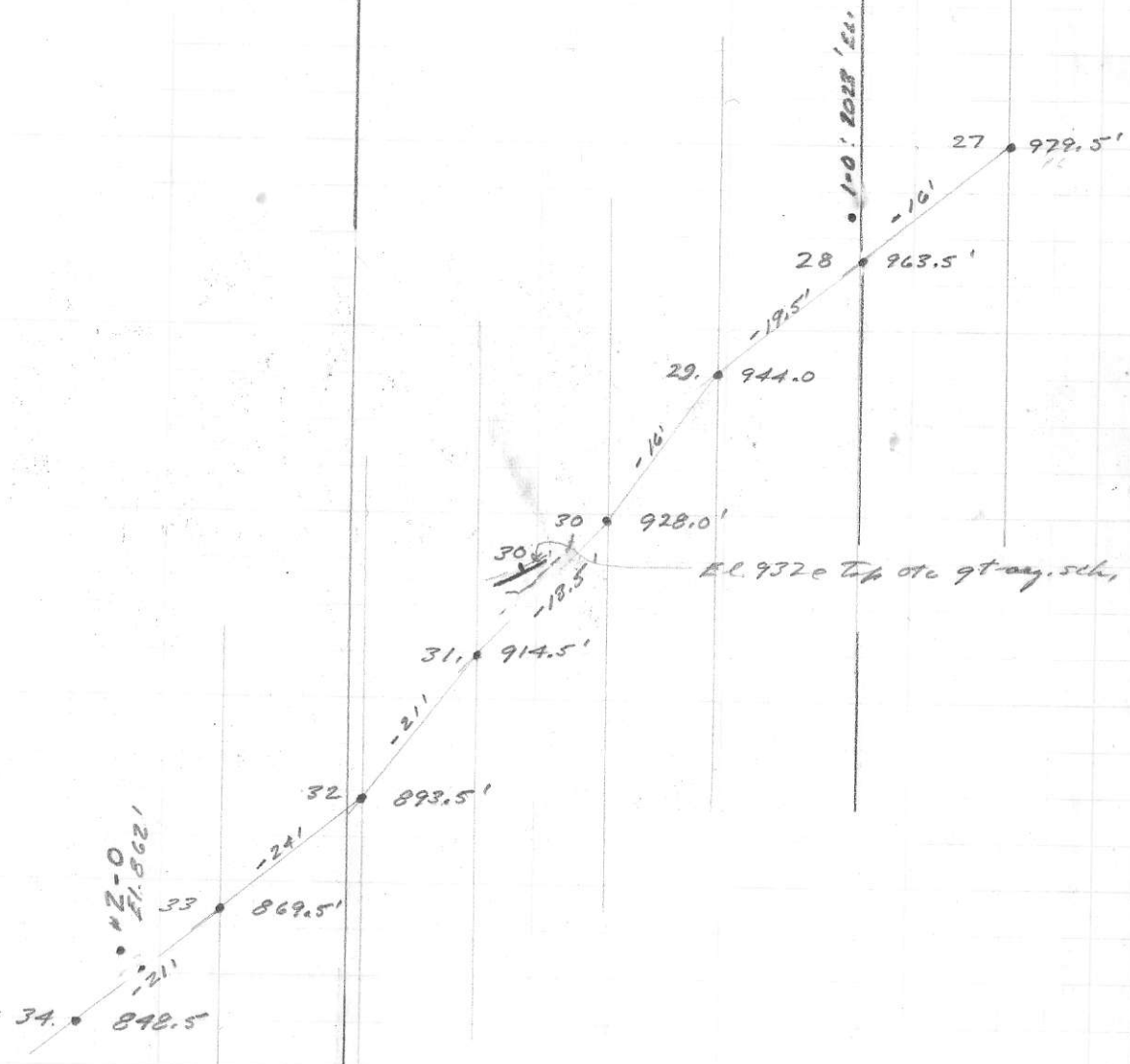
1053.5  
 68.5  
 1122.0

(2)

DEV. 26°-20 E.  
 Coulter Cr.  
 Geophysical Control.  
 1" = 100' 7/24/68

869.5	
10.5	.54
<u>859.0</u>	<u>21</u>
	54
	<u>108</u>
	103.4

1037.0		963.5
869.5	1002.	<u>19.5</u>
<u>767.5</u>	<u>893.5</u>	944.0
	108.5'	<u>16.0</u>
		928.0
		<u>13.5</u>
		914.5
		<u>21.0</u>
		893.5
		<u>24.0</u>
		869.5
		<u>21.0</u>
		848.5



EL. 932.0 Top of gray sch.

③  
 Coulter-Creek  
 7/29/66  
 Geophys. Unit  
 1" = 100', W.S. & J. Kals