



Sub-Mining Recorder
 RECEIVED
 MAY 26 1971
 M.R.#
 TERRACE, B. C.

KENDAL CR.
 KDL MC.'S

800898

100-2640
 100-2640 ET

S 3

Primary
Firebreak

Temporary
Firebreak

S 18

S 2

S 19

Temporary
Firebreak

S 9

S 4

Kendall Cr. A

MIKE CR

KLEANS

PROPOSED (SURVEYED) LOGGING ROAD

A — A

S. 7

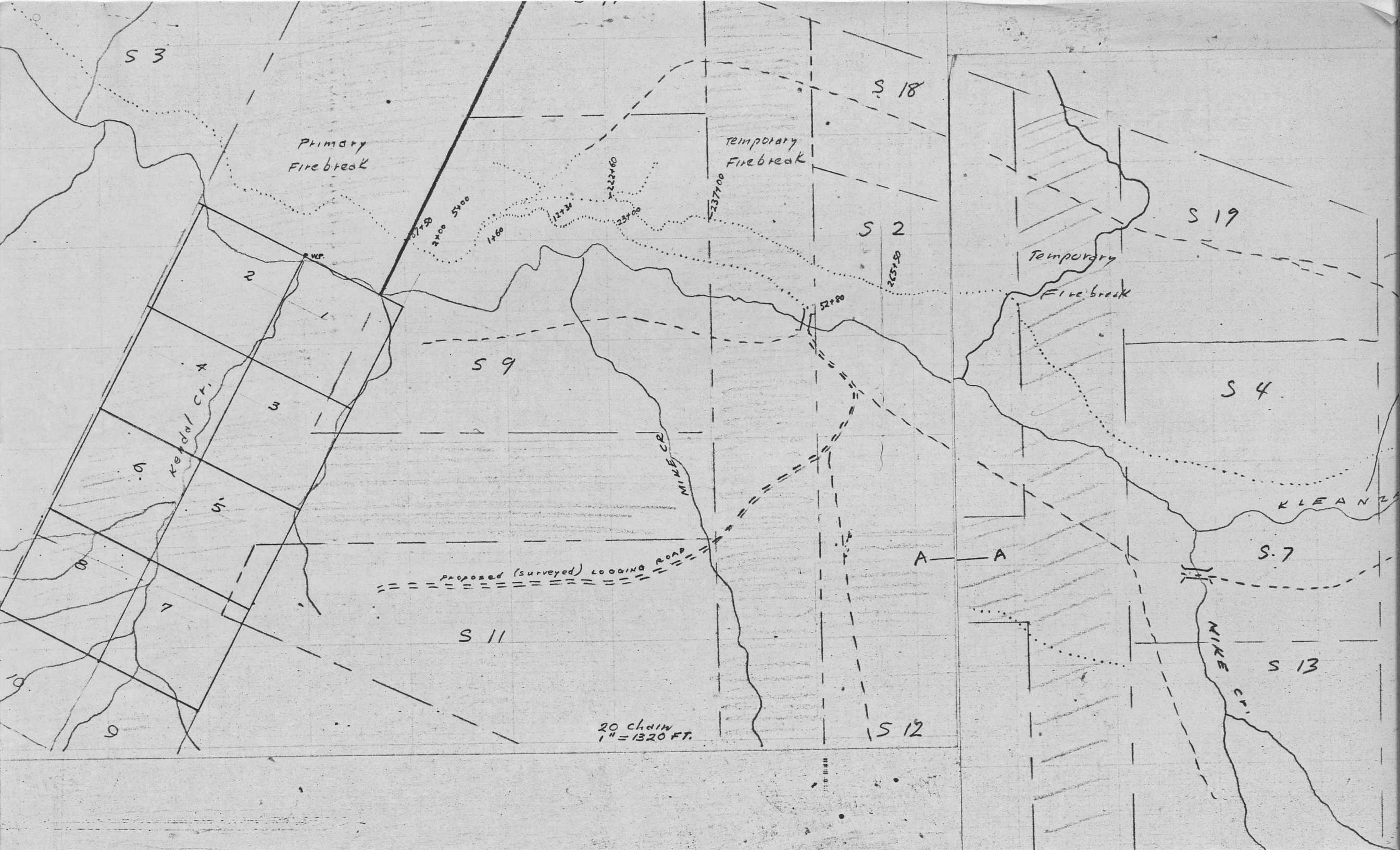
S 11

S 13

MIKE CR

20 chain
1" = 1320 FT.

S 12



ALVITA MINES LTD.

KLEANZA
CREEK
NIOE

ASTRO

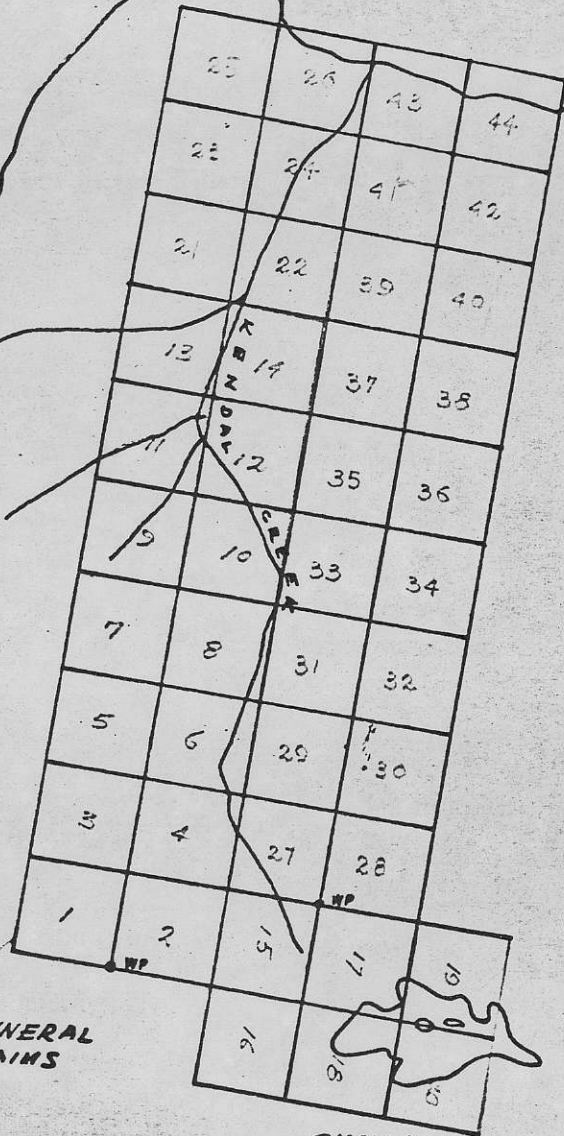
Noble
Five L.

MARSHAL CR.
COPPER

PRINCE ISLAND
COPPER

KLEANZA MINES LTD.

KLEANZA MTN.



"H" MINERAL
CLAIMS

SIMILA L.

1 IN. = 1/2 MI.
R. H. BATES

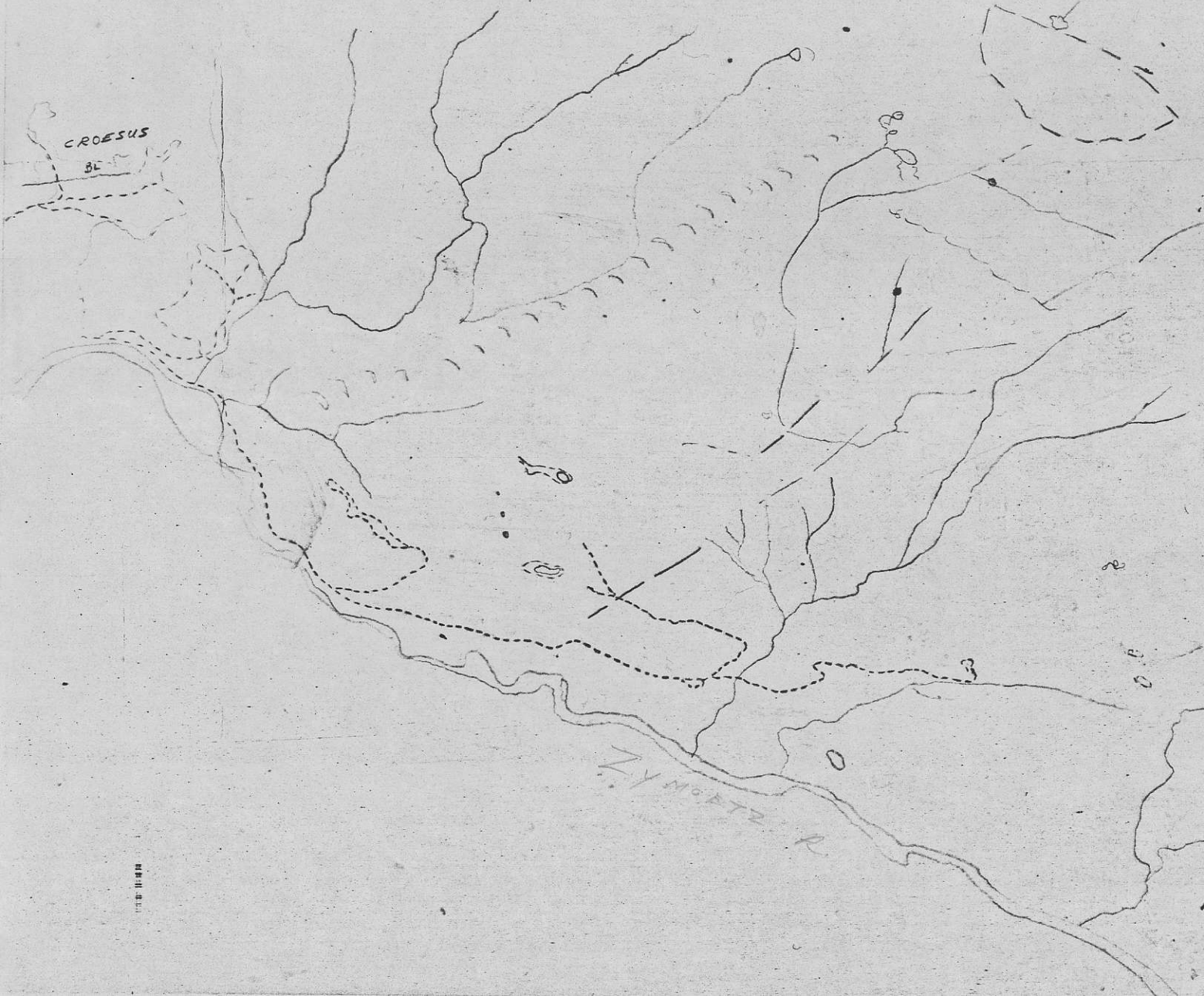
WYMOETZ
COPPER

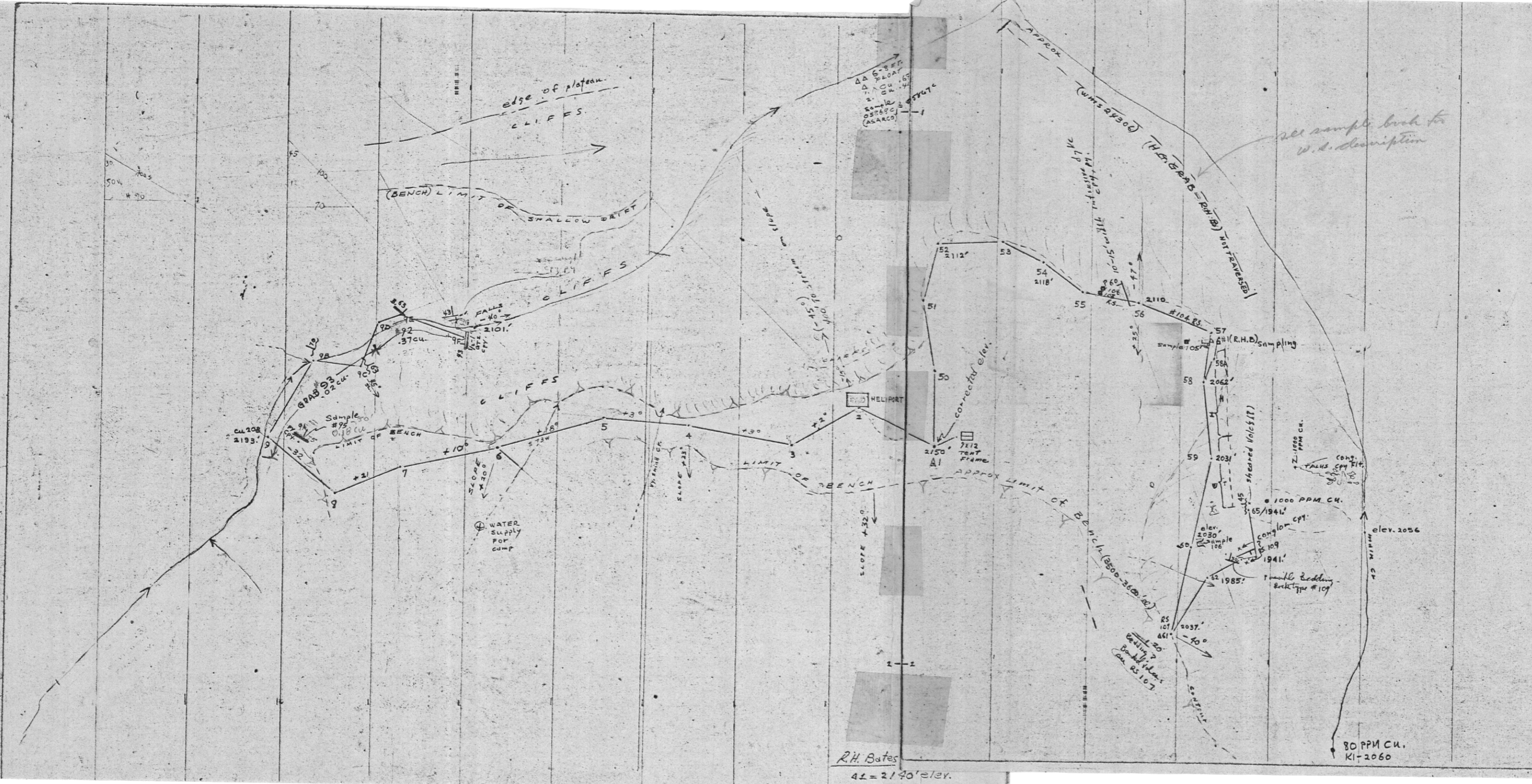
Kendal Co.

CROESUS

BE

ZYNAPTZ R





WIDTH	SAMPLE	QU	CU	MO.	ZH	ROCK
100 FT	"G"	.055	.5	.02	.07	Volcs.
100 FT	"H"		.03		.02	Volcs.
49 (30 FT)	"95"		.18			white (tuff.?)
4 FT PIT @ 460	"106"		.22			
PIT @ 57A GRAB	"105"		.3	.04		Volcs/Py.

see sample book for
w.d. description

R.H. Bates
41 = 2140' elev.

ELEV'S - SUB. 210 FT
RS. = ROCK SPEC./SAMPLE
R.H. BATES
MEAS. - RANGEFINDER
1 IN = 100 FT.

