

June 28 Survey
B-C Report - July 17/68

NE	PPm
1600	9
1500	10
1400	5
1300	17
1200	13
1100	8
1000	34
950	44
900	10
850	4
800	15
700	92
600	14

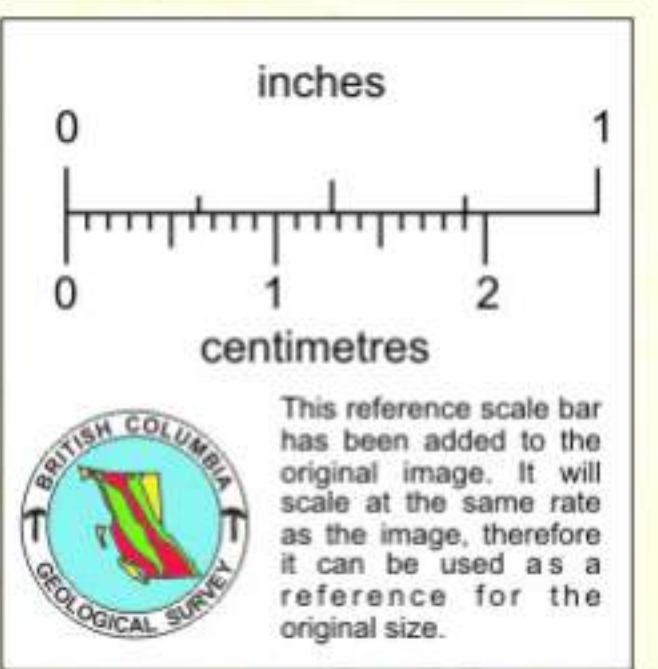
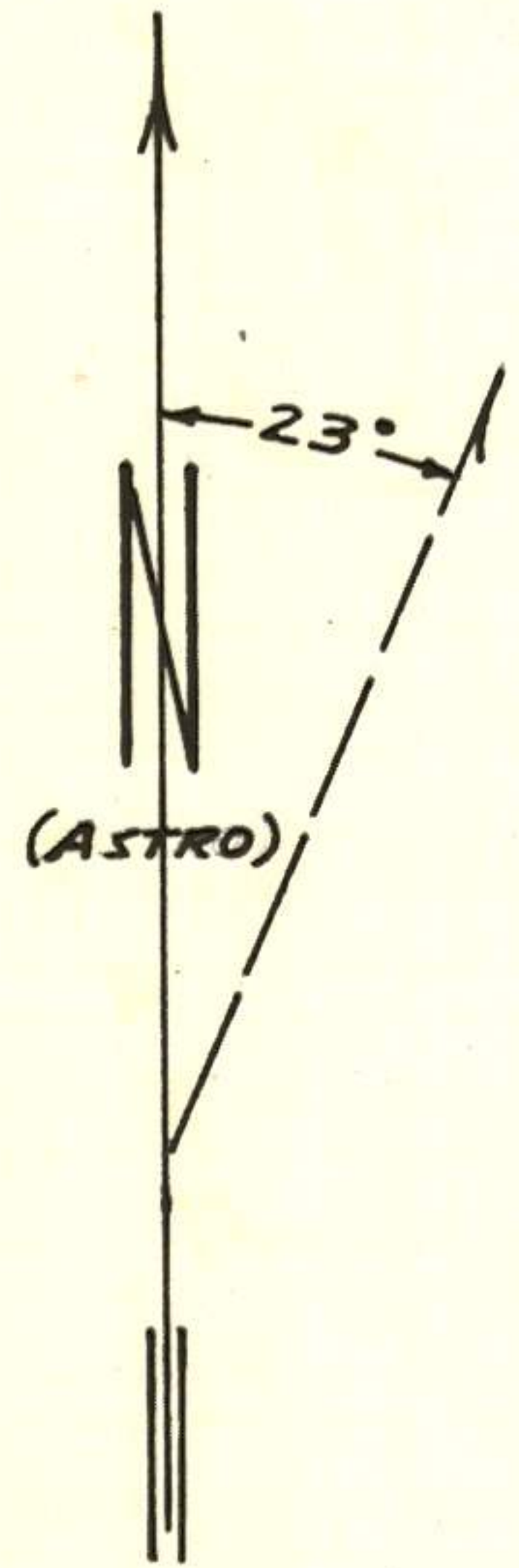
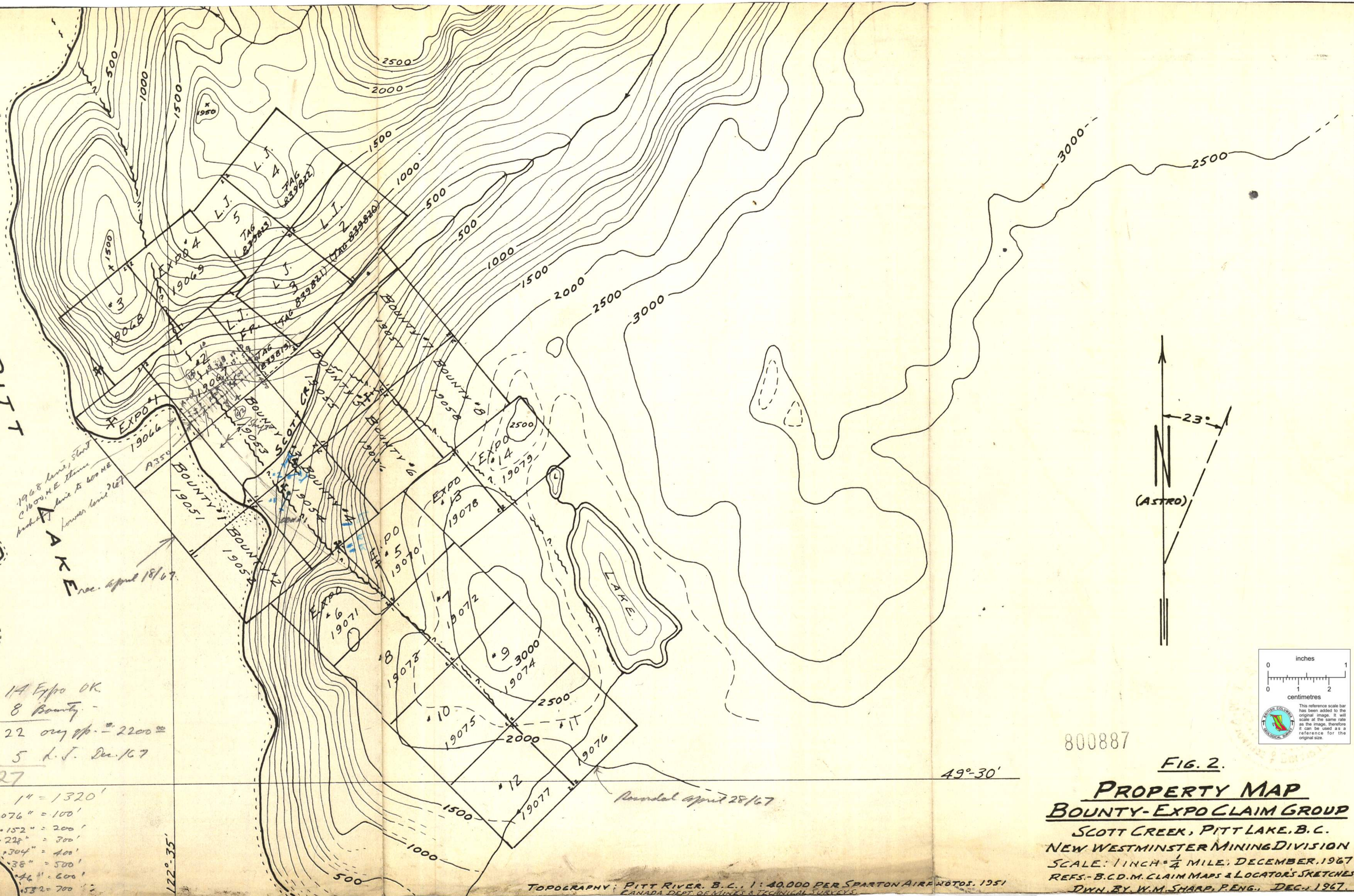
PITT LAKE

1968 line, start
C 1600, NE stream
hooked to line to 600 NE
lower line
rec. April 18/67

14 Expts OK
8 Bounty
* 22 only sp. = 2200
5 L.J. Dec. 167

14 = 1320'
1076" = 100'
152" = 200'
228" = 300'
304" = 400'
38" = 500'
46" = 600'
532 = 700'

757
1321100.00
724
760
660
1000



800887

49°-30'

Revised April 28/67

FIG. 2.
PROPERTY MAP
BOUNTY-EXPO CLAIM GROUP
SCOT CREEK, PITT LAKE, B.C.
NEW WESTMINSTER MINING DIVISION
SCALE: 1 INCH = 1/4 MILE; DECEMBER, 1967
REFS. - B.C.D.M. CLAIM MAPS & LOCATOR'S SKETCHES.
DWN. BY W.M. SHARP, P. ENG., DEC., 1967.

TOPOGRAPHY: PITT RIVER, B.C., 1:40,000 PER SPARTON AIR PHOTOS, 1951
CANADA DEPT. OF MINES & TECHNICAL SURVEYS.