

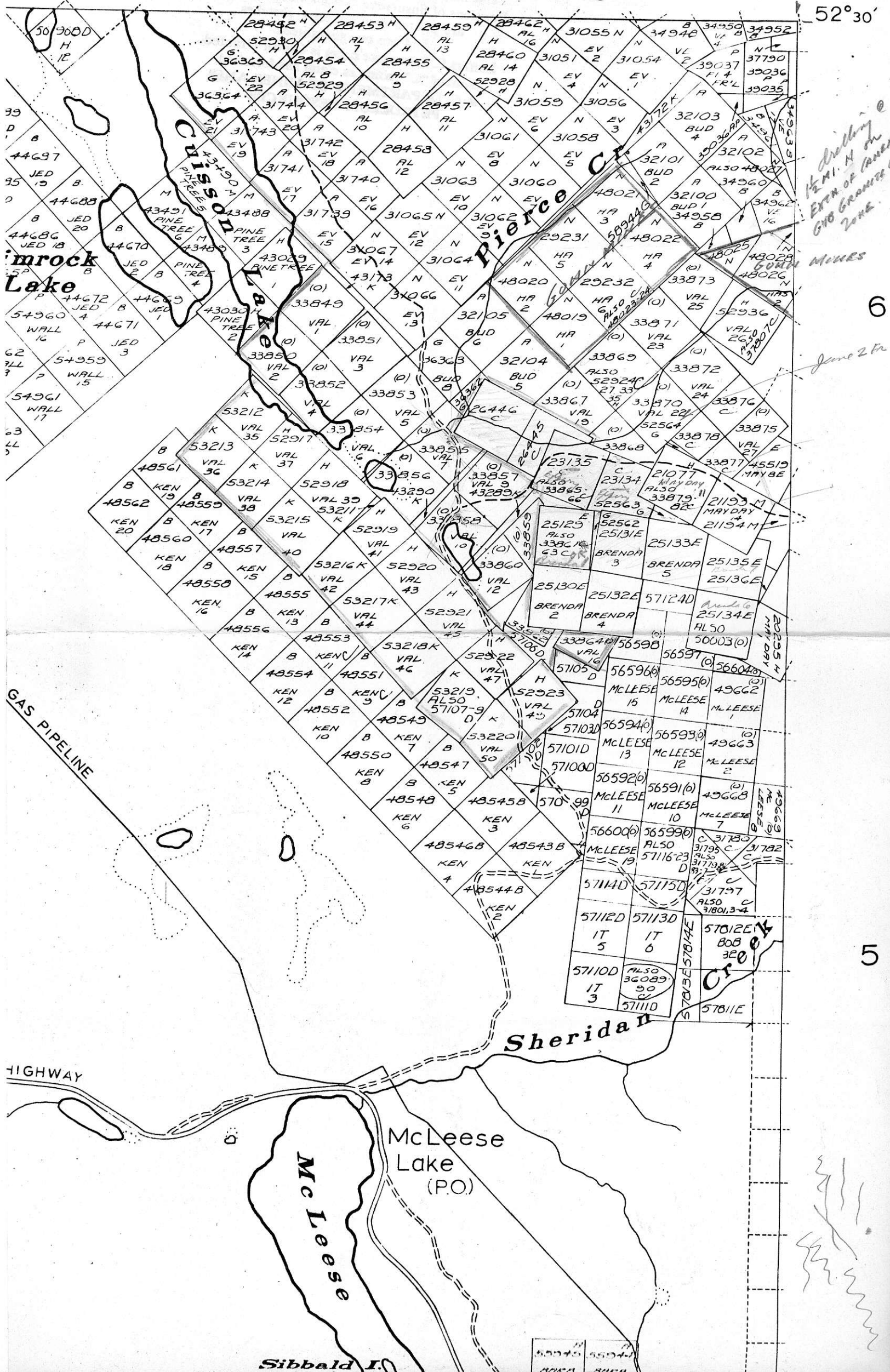
3.34

9th Nov. 70

HA - Gunn Mines Ltd.
800884

122° 15' 52' 30"

1" = 1/2 mi



HA - Crown Mines
488008

25° 30'

This map is prepared to serve as a guide only.
Positions of unsurveyed claims and placer leases
are plotted from locators' sketches
and are not guaranteed.

Letters C.G. indicate claim is Crown-Granted.
Symbol "C" indicates claim has forfeited.
**B. C. DEPARTMENT OF MINES AND
PETROLEUM RESOURCES**



RD

HIGHWAY

McLeese
Lake
(P.O.)

McLeese

Speridjan

Speridjan