



Silversmith mine at Sandon, 1900



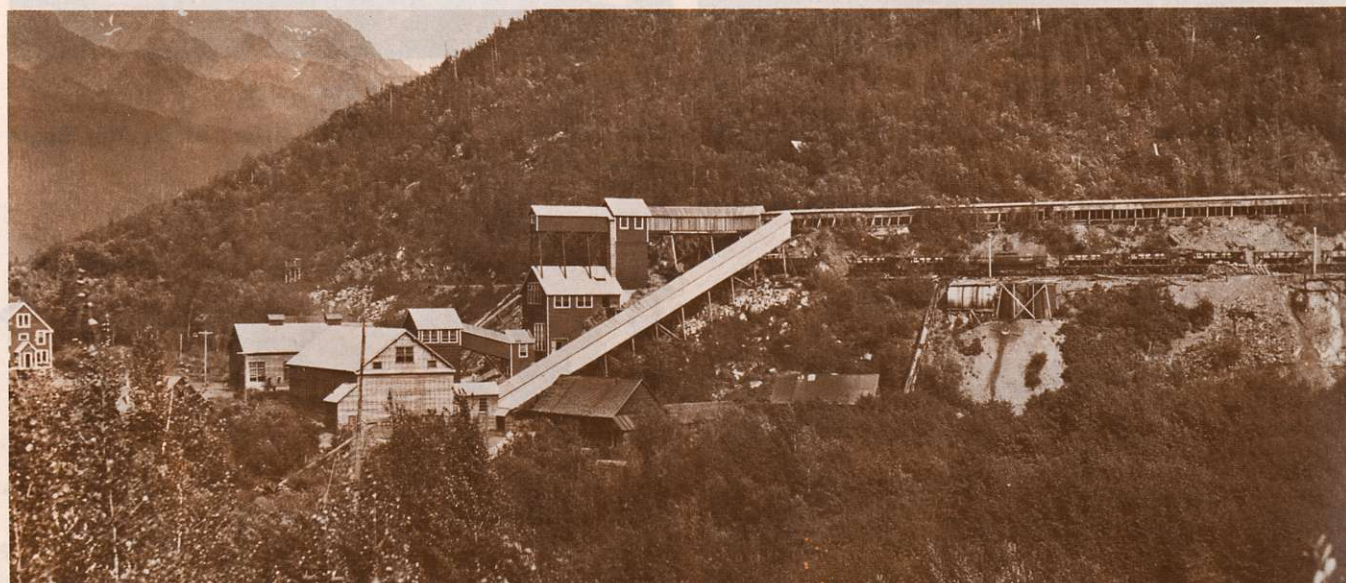
Slocan Rambler, 1900



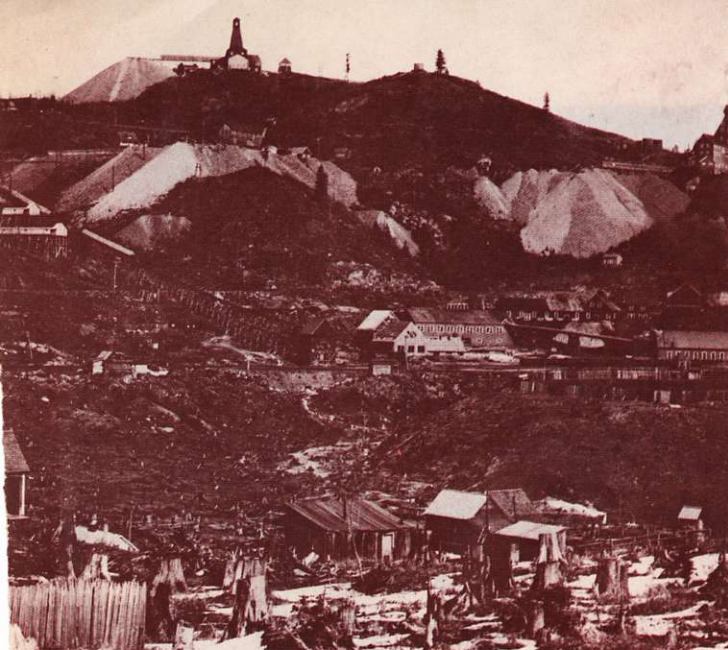
Left: Concentrator at Payne Siding, near Sandon, 1898

These two and top photos,
courtesy B.C. Archives

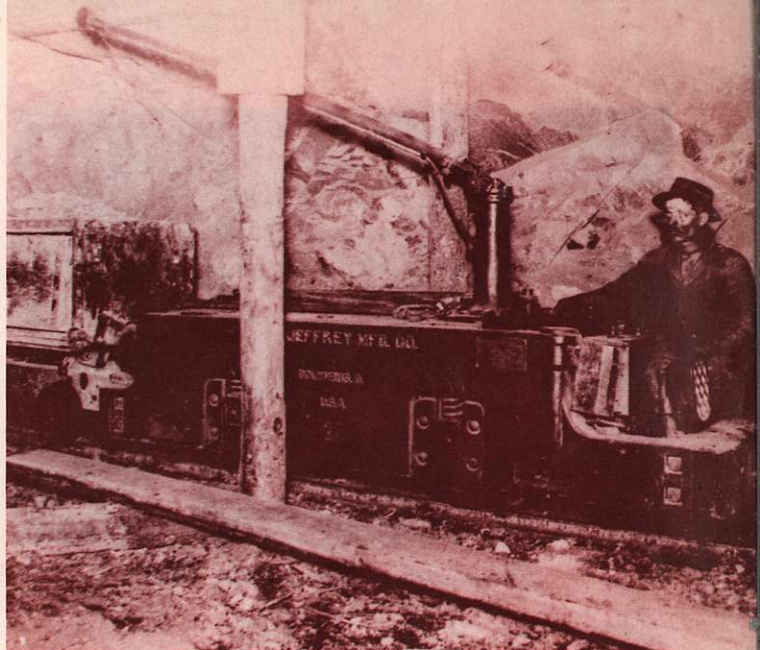
Right: Cody Creek, Ruth Hope mine on the hill, mill in centre, and town of Sandon lowermost.



Mill and plant of Lucky Jim Lead & Zinc Co. Ltd., Zincton, B.C., 1928. Property was reclaimed and rehabilitated by the late Henry Doelle and produced successfully for Sheep Creek Gold Mines Ltd. during World War II.



View of Red Mountain looking northeast. Right: LeRoi mine; below, Black Bear workings and ball park; right, Josie mine buildings and tramway.



First electric locomotive at the LeRoi mine, 1908

Rossland

All photos, courtesy B.C. Archives



LeRoi mine

Nickel Plate mine (left) above Centre Star office and boarding house, 1900



Centre Star gulch

Below:

Putting in the "Cousin Jack" lifters at the War Eagle mine, 1908

