

7000N

7000N

643

642

641

6800N

7400E

800864
82K

40'

40'

40'

1/2" match

printed 40-scale



Lucky Jim
9-LEV. 3 ADI... 1"=40'
W.S. & G. NYER: DEC. 1/71

①

①

6800N

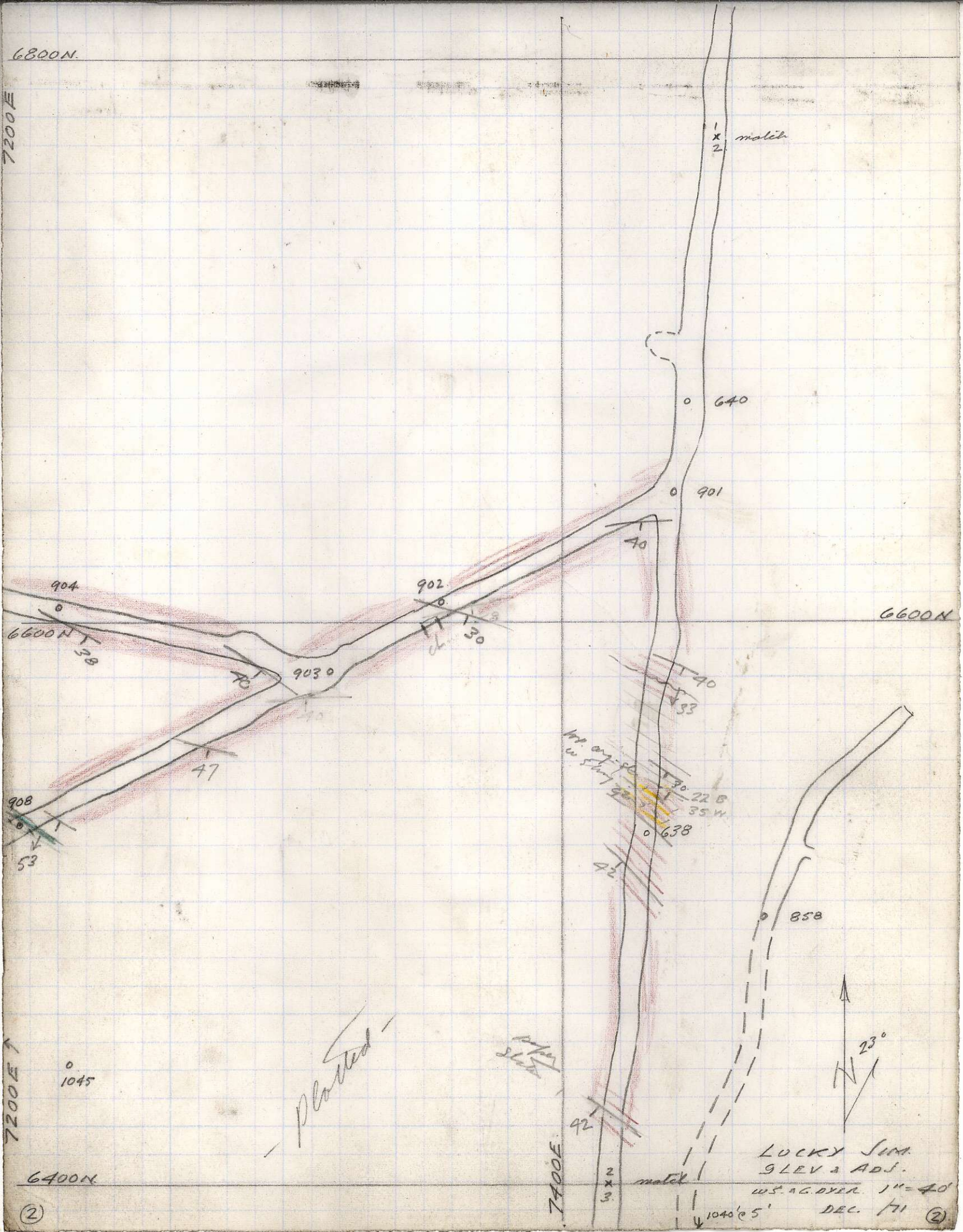
7200E

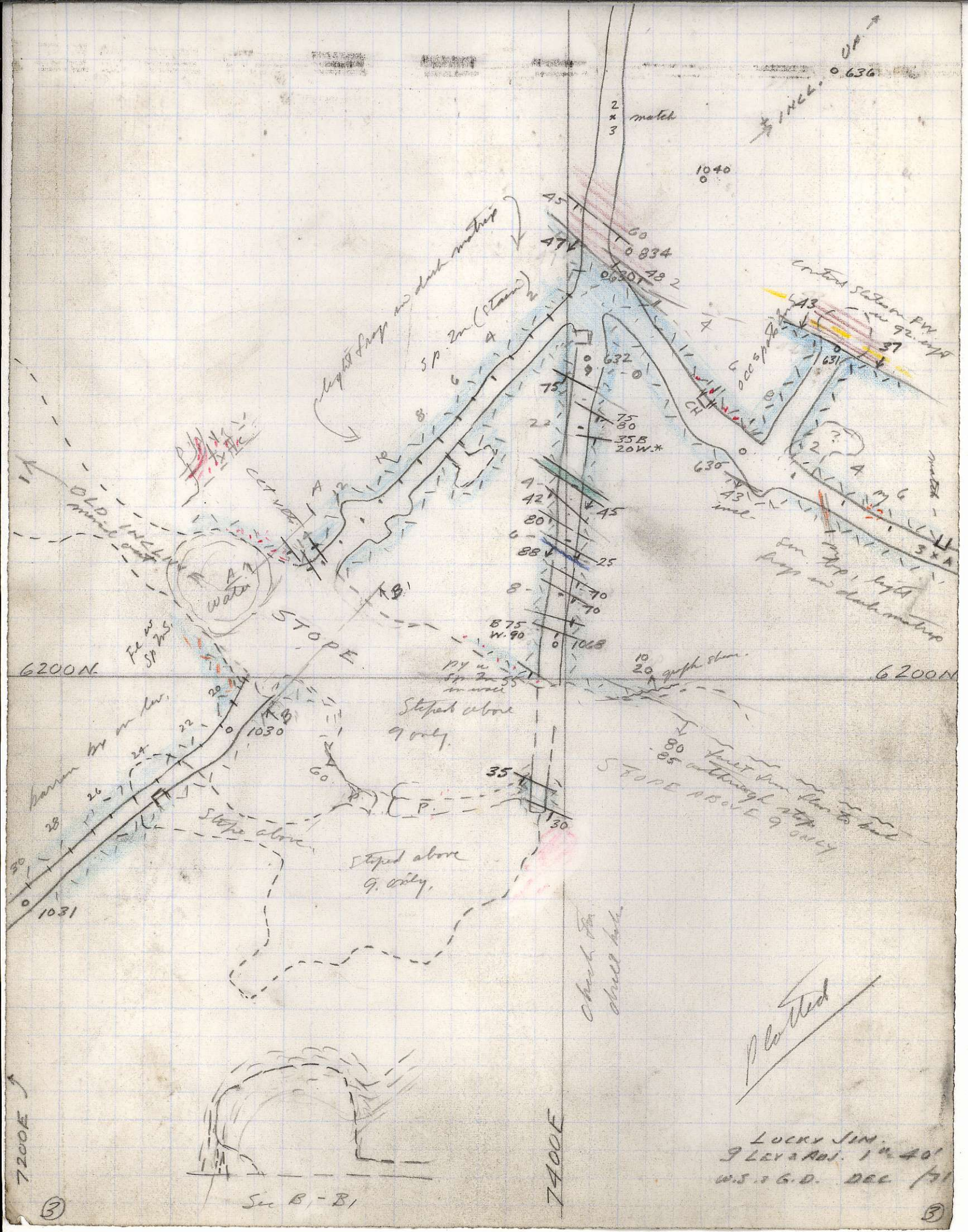
7200E

6400N

6600N

(2)





UP ↑
 SINCE 0.636

2
 x
 3
 match

1040

light slope no dark material
 SP 2m (stone)

water

STOPE

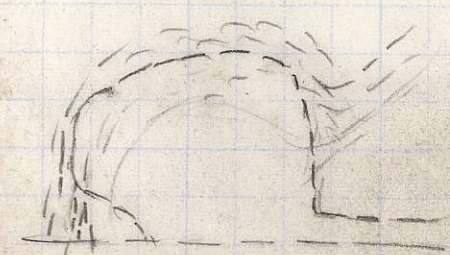
Staked above 9 only

Staked above 9 only

Staked above 9 only

check for small hole

Plotted



Sec B1-B1

LUCKY JIN.
 9 LEV. ADJ. 1940
 W.S. & G.D. DEC 1941

7200E ↑

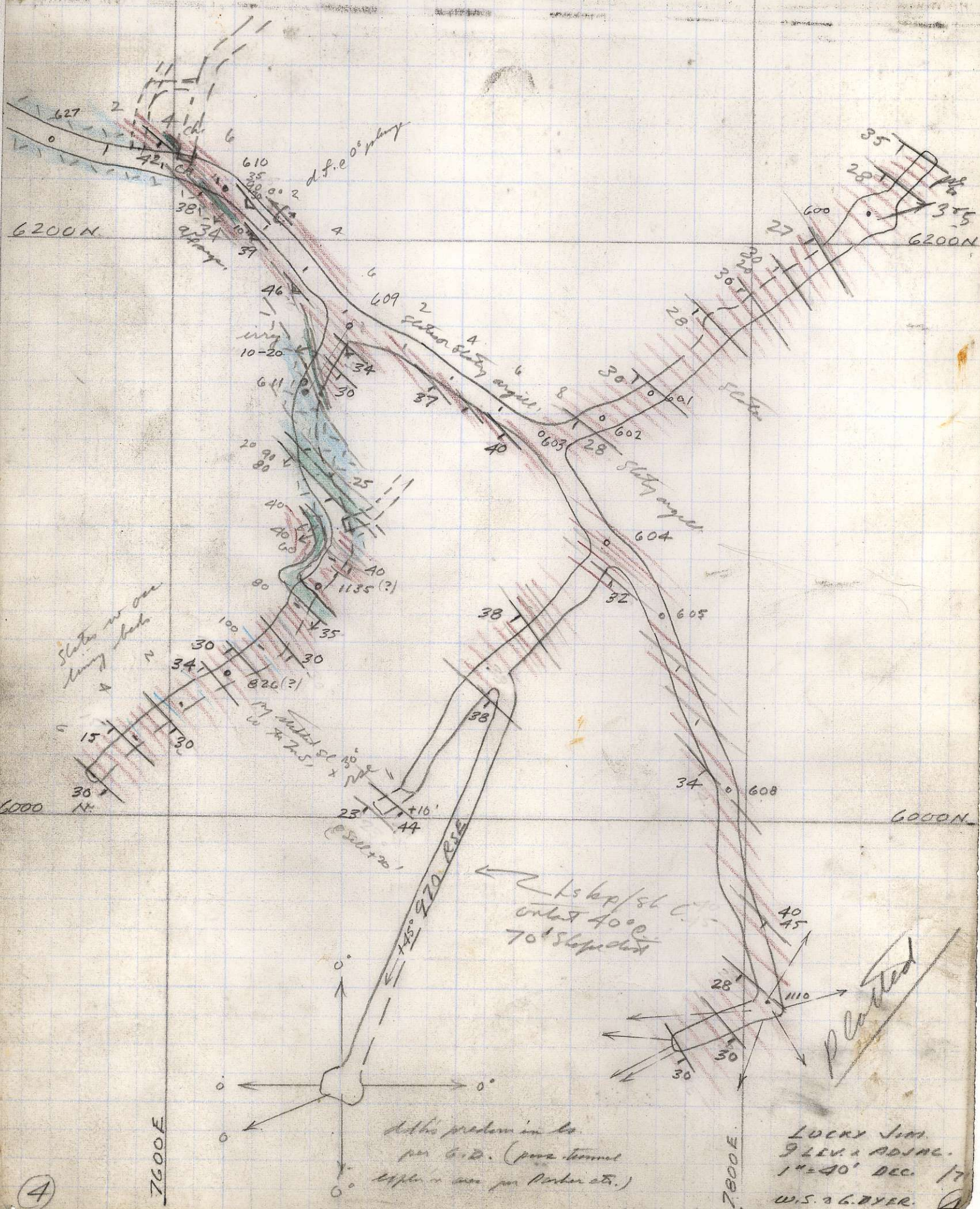
7400E

6200N

6200N

③

③

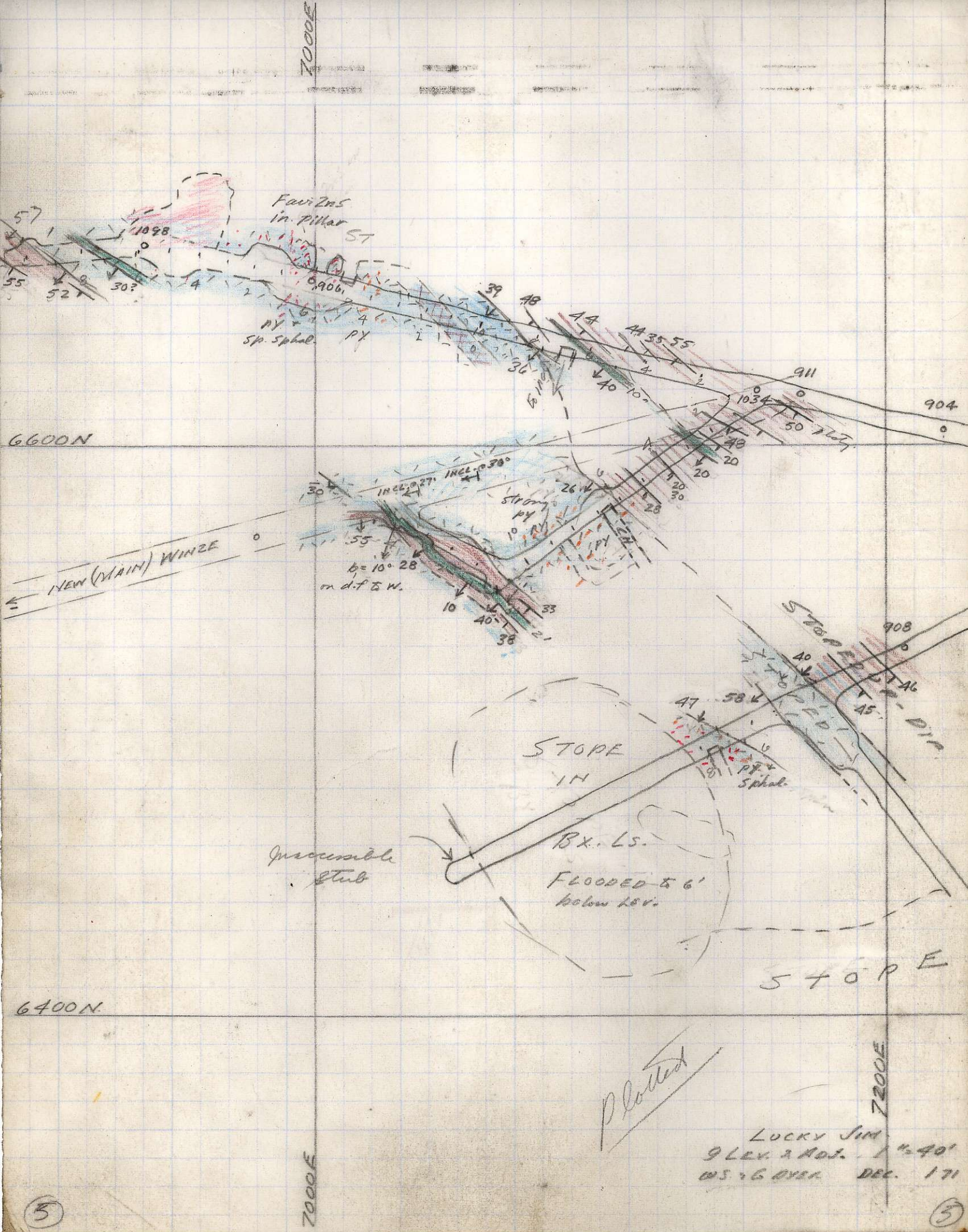


At this problem in the
 per G.D. (pore tunnel
 explain in case per Parker etc.)

Lucky Jim
 9 LEV. 1 ADJAC.
 1" = 40' DEC. 17
 W.S. & G. DYER.

(4)

(4)



7000E

6600N

6400N

7000E

7200E

Fair Dns
in pillar ST

sp. Sphal.
PY

NEW (MAIN) WINZE

b = 10° 28'
on d.f. to W.

STOPE
IN

Bx. Ls.

FLOODED 5 6'
below lev.

Inaccessible
Stab

STOPE

Plotted

Lucky Jim
9 Lev. 2 Adj. 1 "40'
WS 26 OVER DEC. 171

5

5

6200N



Slope from 10. low
 (to 25' above 9. low)
 (Slaty ls.)

2m in top ls. + in
 front filling ect.

top of dip very well (transverse slaty + ls.)

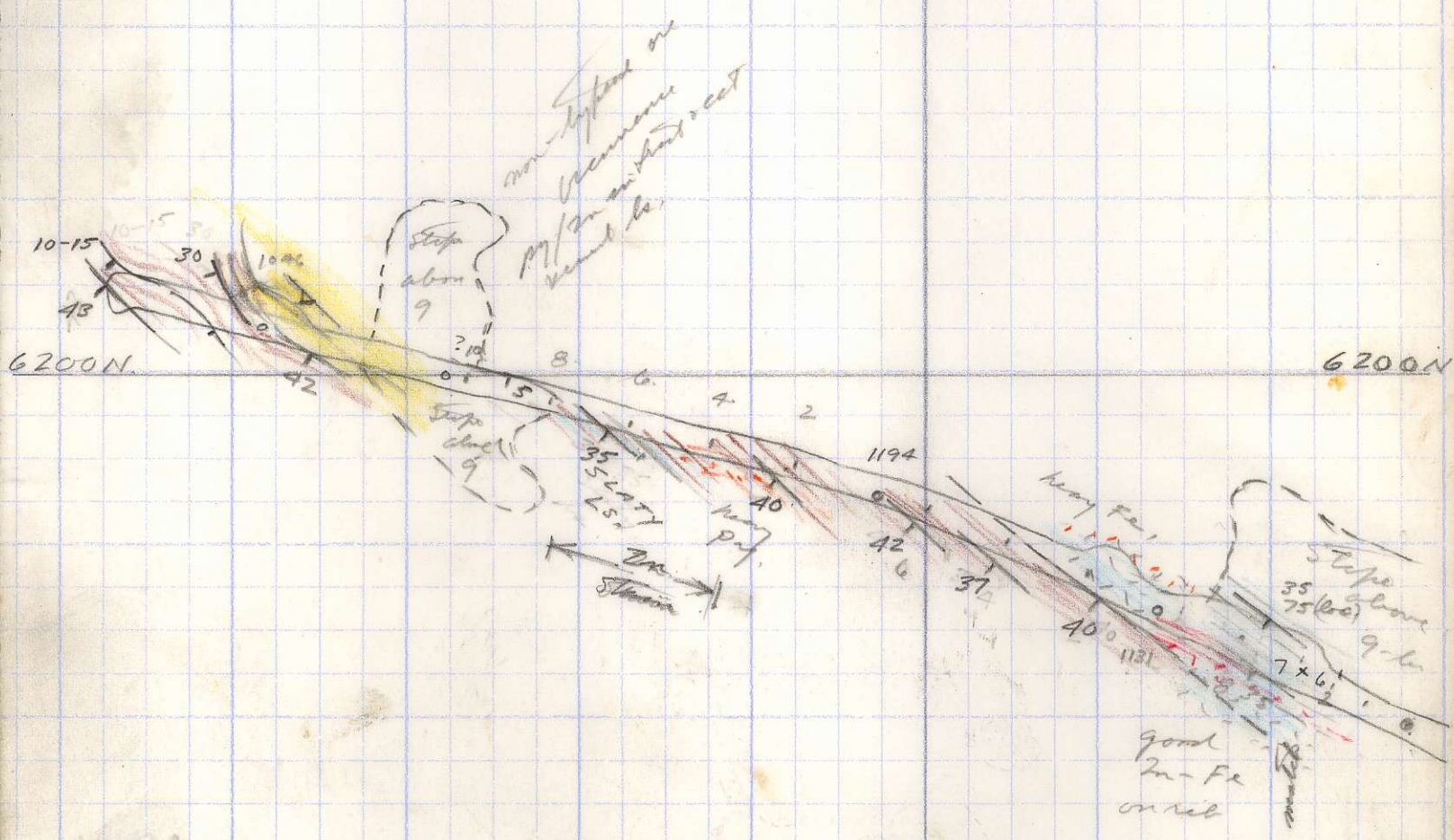
MSV L.S.
 1053

low w/ long
 Slaty ls.
 with green shale by way
 of top near
 beach track
 in slaty

Cold Pt.
 to Transition

SEC. A-A1

LUCKY SIM
 9 LEV. & ADJAC.
 U.S. & G.D. 1" = 40'
 DEC. 71



Plotted

LUCKY SIM
 9 LEV & ADJAC.
 W.S. CO 1st 40'
 DEC. 1/71

⑦

⑦