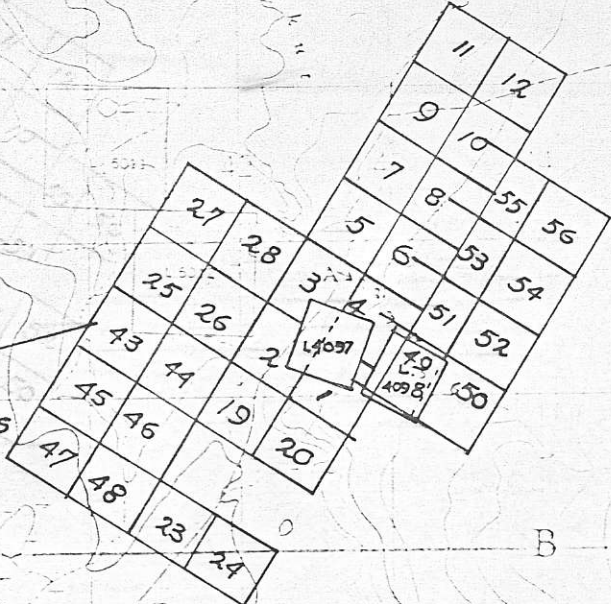


B A B I N E L A K E

Silver Island
(Island)



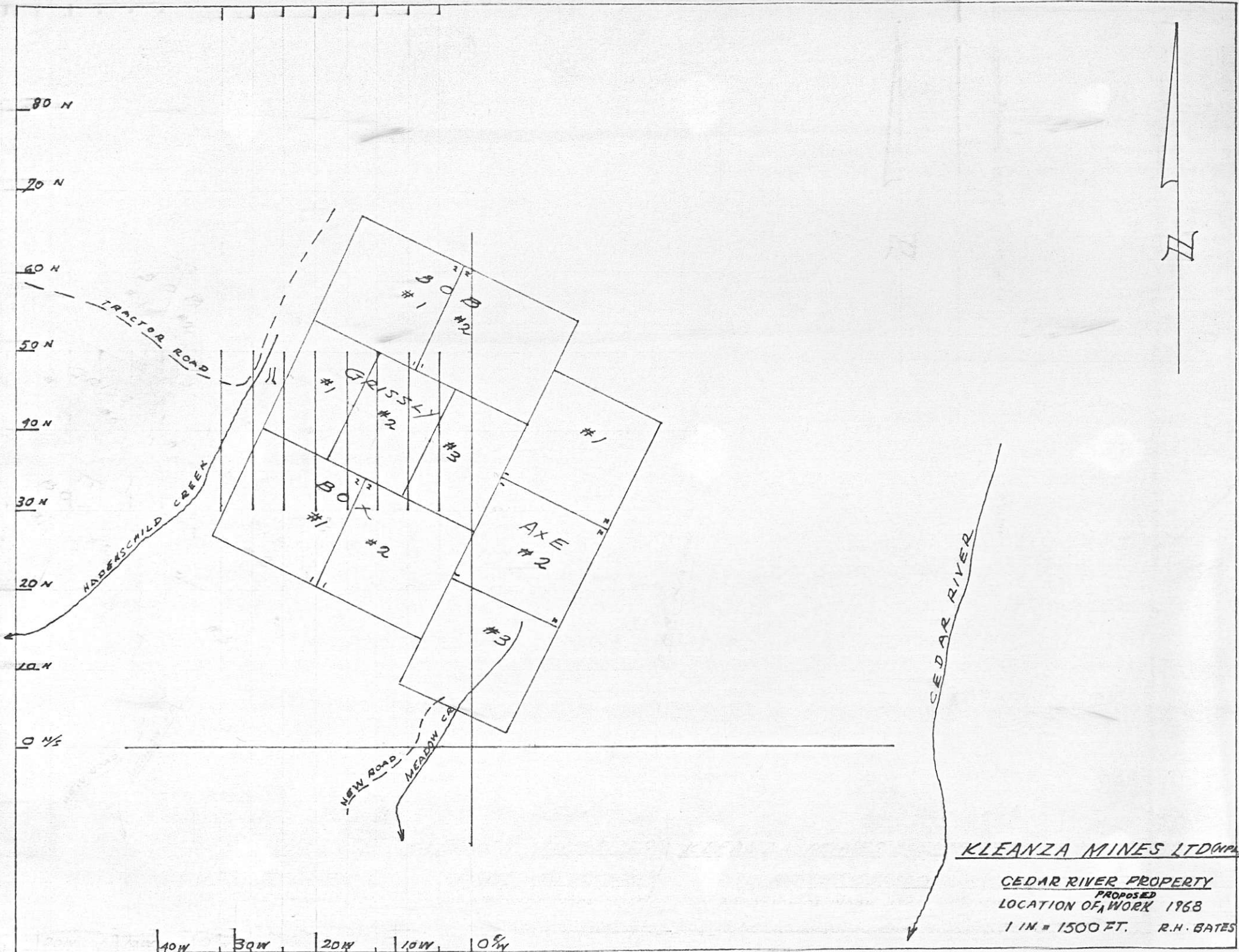
B A B I N E

TALTAPIN MOUNTAIN

KLEANZA MINES LTD (NPL)
TALTAPIN PROPERTY
SCALE 1:50,000

R. H. BATES

800787



501.302

501.302

Sub-Mining Recorder
 RECEIVED
 FEB 14 1967
 M.R.# _____ \$ _____
 TERRACE, B.C.



113	114	127	128
111	112	125	126
109	110	123	124
107	108	121	122
105	106	119	120
103	104	117	118
101	102	115	116

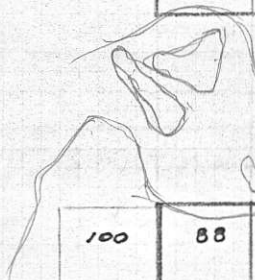
19	17	25	27	29	59	61	63	65
	CROESUS GROUP NO. 1							
20	18	26	28	30	60	62	64	66

7	5	3	1	31	33	35
		(C)				
8	6	4	2	32	34	36

↑ MINERAL CLAIMS
 RETAINED BY KLEANZA.

↓ MINERAL CLAIMS
 INVOLVED IN
 TITAN AGREEMENT

80	78	70	68	15	13	11	9	37	39	41	
79	77	69	CROESUS GROUP NO. 2				38	40	42		
			16	14	12	10					
		72	57	(A)	45	47	49	51	53	55	
			(B)	RIVER							
		71	58	44	46	48	50	52	54	56	
			CROESUS GROUP NO. 3								
100	88	86	84	82	90	92	94	96	98		
99	87	85	83	81	89	91	93	95	97		



RIVER

COPPER RIVER

KLEANZA MINES LTD (N.L.)

CROESUS PROPERTY

SCALE (APPROX) 1 IN. = 3000 FT.

A CROESUS ZONE
 B EXCELSIOR ZONE
 C GEM ZONE

R.H. BATES