

Scale 1" = 1500'

West boundaries of all claims 1500' L. (of location line)

Measure by double step = 5'
300 double steps = 1500'
actual claim length = 1500' x 1500'

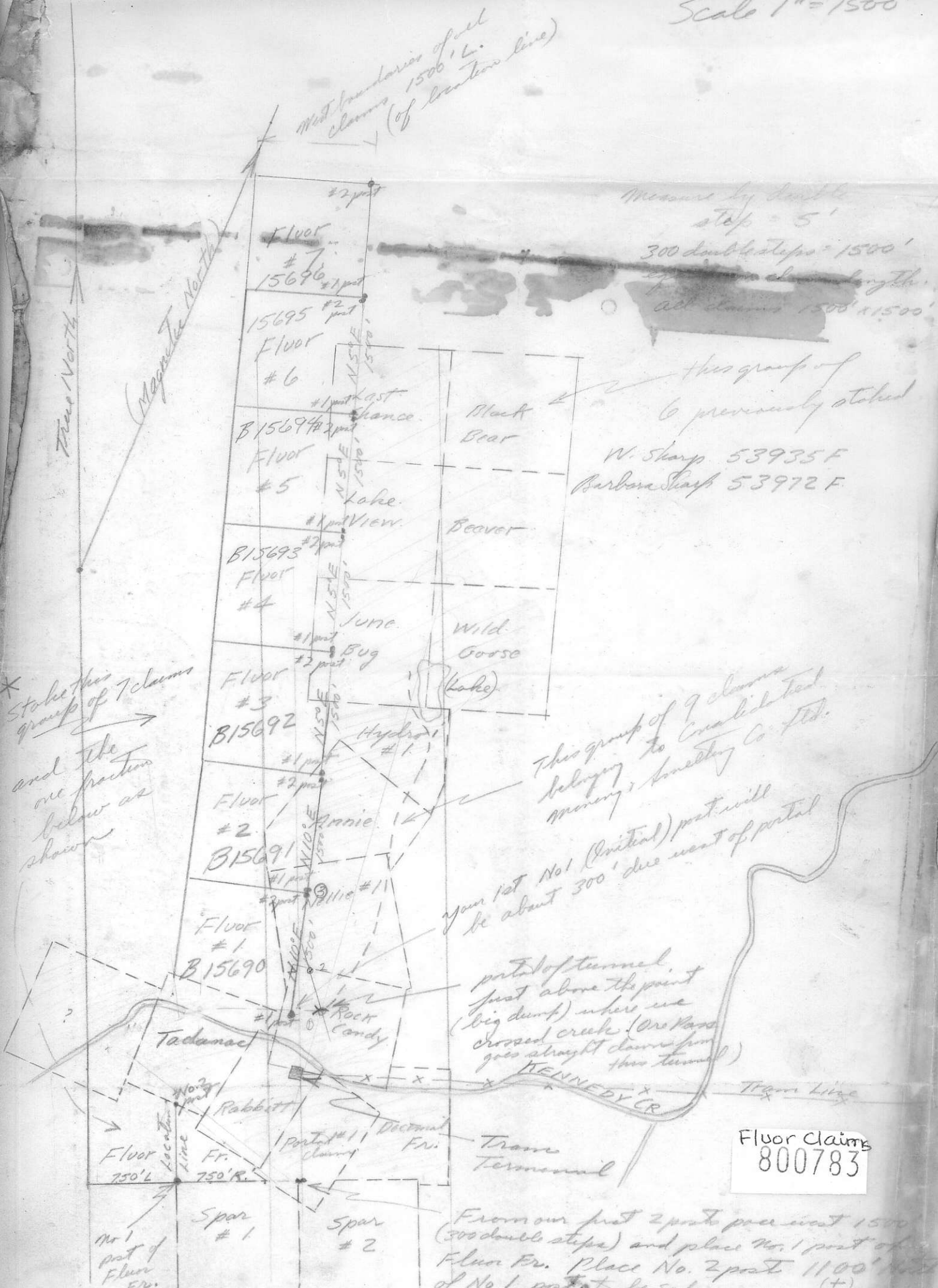
this group of 6 previously staked
W. Sharp 53935 F
Barbara Sharp 53972 F

* Stake this group of 7 claims and the one fraction below as shown

This group of 9 claims belong to Coalfield Mining & Smelting Co. Ltd.

Your lot No 1 (partial) part will be about 300' due west of portal

portal of tunnel just above the point (big dump) where we crossed creek (Orlando goes straight down from this tunnel)



Fluor Claims
800783

From our first 2 post you west 1500 (300 double steps) and place No. 1 post of Fluor Fr. Place No. 2 post 1100' West of No 1 post to be safe.