

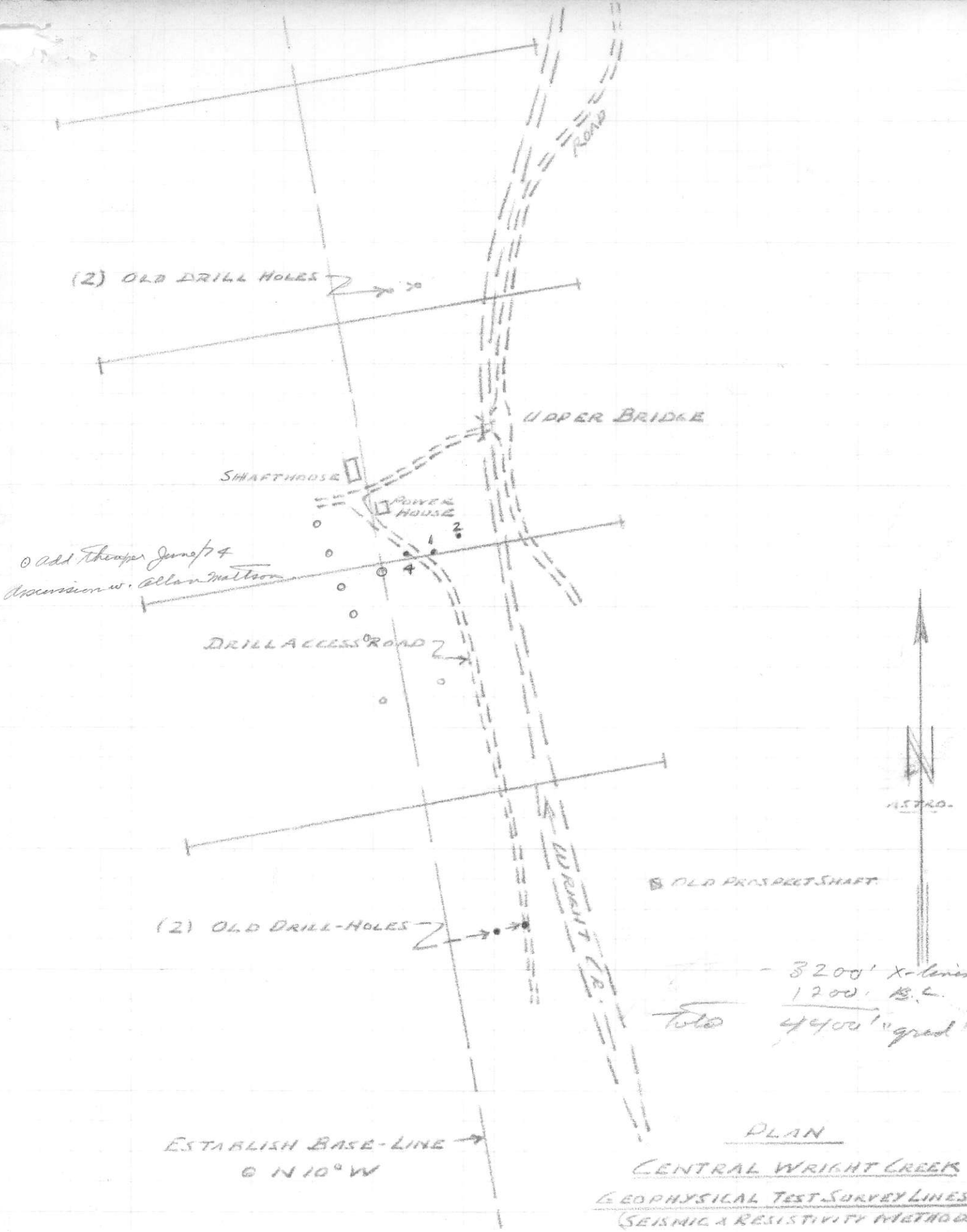
2600' X-axis  
 1100' B.C.  
 Total 3700 "grid"

PLAN  
LOWER OTTER CREEK  
GEOPHYSICAL TEST SURVEY LINES  
 (SEISMIC & RESISTIVITY METHODS)  
 BASE = A.F. DAILY MAP, 1947  
 1" = 200'      SEPT. 2, 1973

W. M. Sharp, P. Eng.

(COPY TO PHIL. NIELSEN) ✓

800762  
 Otter Creek  
 Atlin, M.D.



(2) OLD DRILL HOLES →

UPPER BRIDGE

SHAFTHOUSE

POWER HOUSE

Old Thompson June/74  
Discussion w. Allan Mattson

DRILL ACCESS ROAD →

(2) OLD DRILL-HOLES →

OLD PROSPECT SHAFT

ASTRO.

3200' x-lines  
1200' B.L.  
Total 4400' grad''

ESTABLISH BASE-LINE →  
@ N 10° W

PLAN  
CENTRAL WRIGHT CREEK  
GEOPHYSICAL TEST SURVEY LINES  
(SEISMIC & RESISTIVITY METHODS)  
1/4" = 200'      SEPT. 21, 1973

(COPY TO PHIL NIELSEN) ✓

W.M. Thompson P. Eng