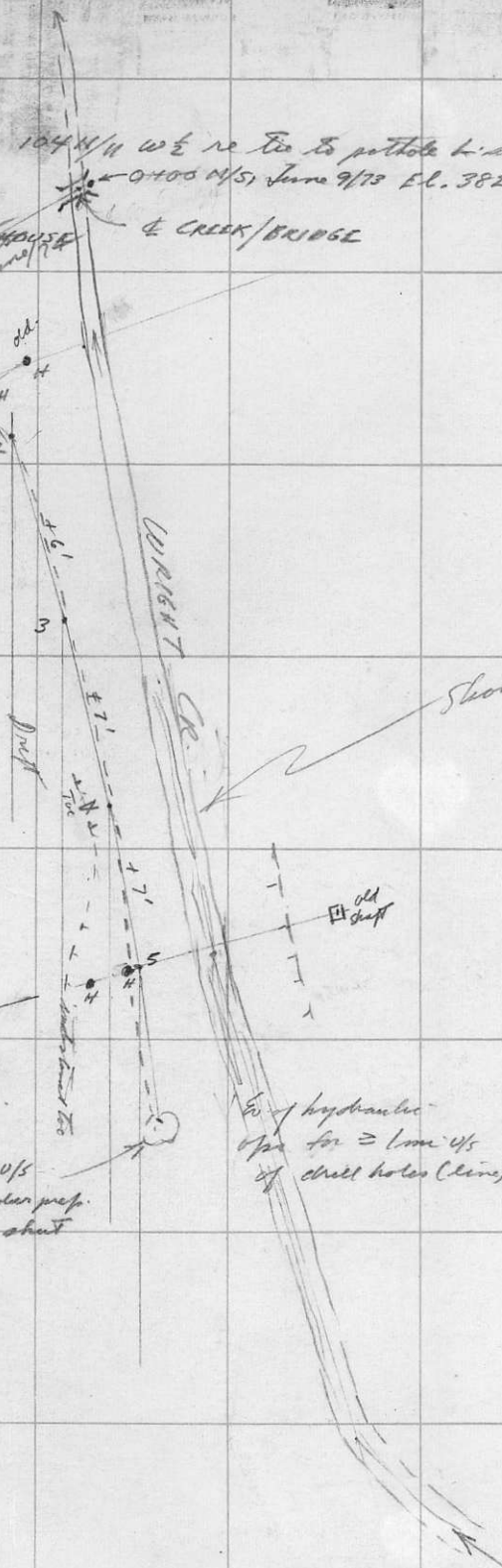


See 1:50,000 104 N/W WE re tie to pot hole last part of "Aspen Gulch"
0400 N/S, June 9/73 EL. 3825'

SHAFTHOUSE
RLE STA. 422'
Side reported hamlet - rich old ch - 2 Rockland stones should have drifted out under this.



Show narrower (12'-15') on final plan.

PROBABLE DRILL HOLE LINE No. 1 with more eastern holes obliterated by gravel/sand deposits

ev. this up
drill into under prep. when drilling shut down

Ev. hydraulic
Apr for \geq 10m up
of drill holes (line)

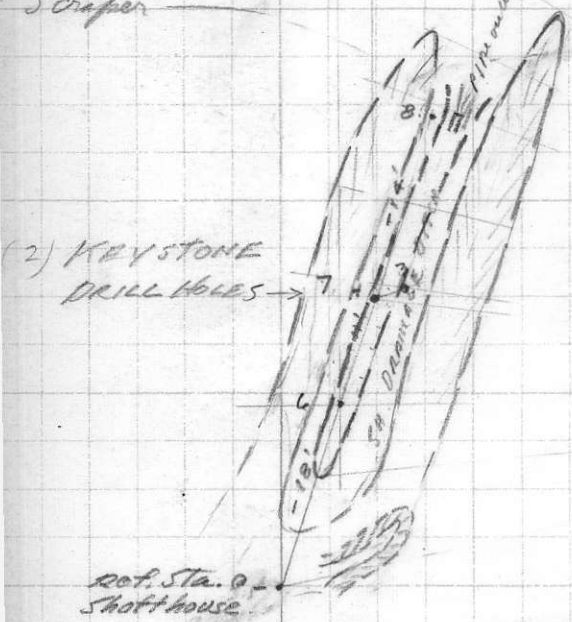
old shaft



800743 June 10 - (2)

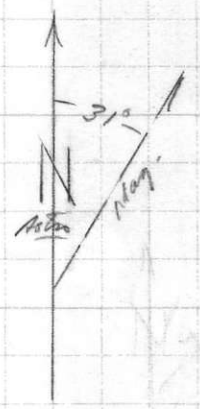
MINE SURPRISE RESOURCES LOCATION WRIGHT CR., ATLIN M.D. LEVEL SURF.
GEOLOGY BY NH • Drill hole SURVEY W.M.S. DATE June 10 1973 SCALE 1" = 200'
E Compass + Chain EL. _____
AUT. Don Scarborough

Ditch tailings
moved by drag-line
Scraper



Thence to road survey (June 9) Sta 18400
we datum for search for Drill Hole No 2
reportedly 1800' D/S of bridge and
close below "Aspen Gulch" → no
success due to poss. obliteration of
evidence of drilling via flood-stage
deposits of sand/gravel silt.

tailings
removed by drag
line scraper



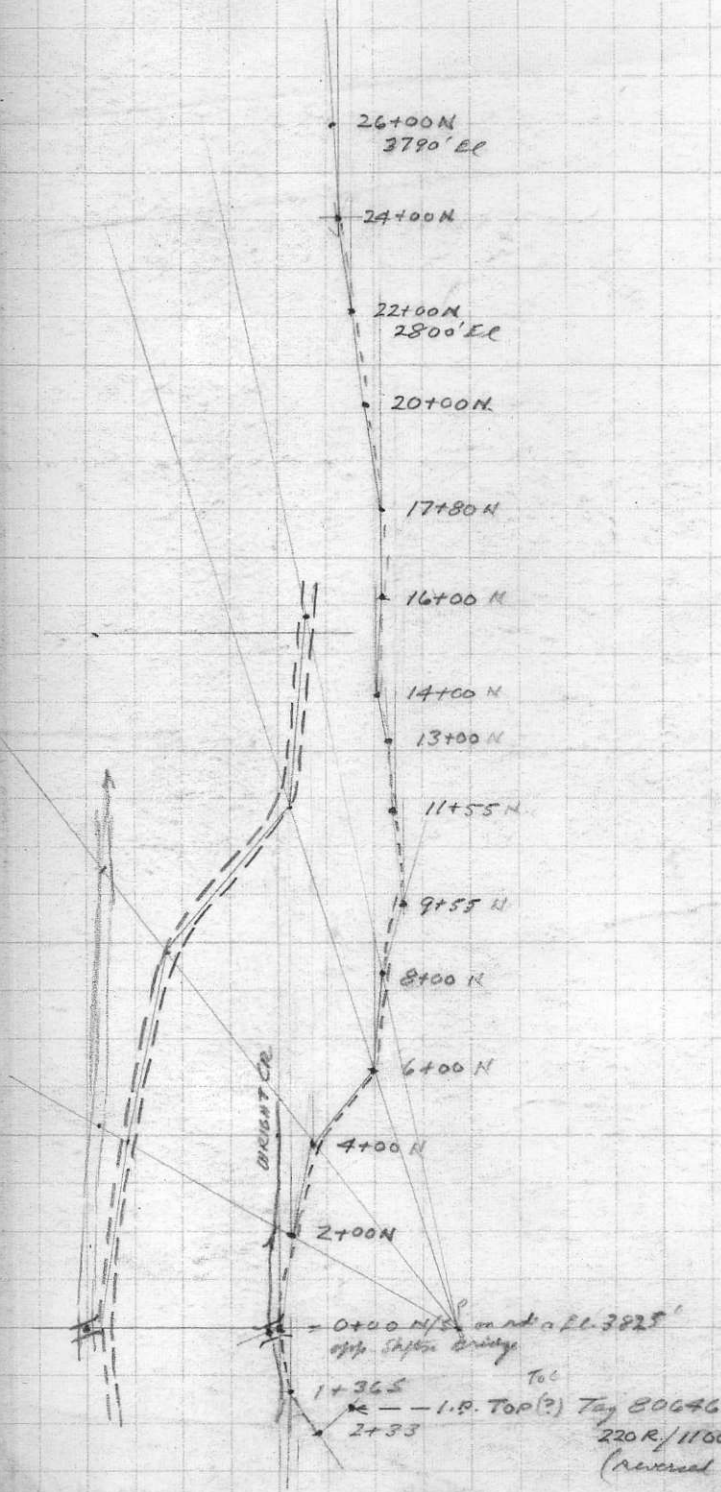
K.D.H. = Keystone Drill Hole

KEYSTONE DRILL HOLE PLOTS
WRIGHT CREEK
ATHLETIC, M.D.
1" = 200'. JUNE 10/73 - (3)
W.D. + Don Replburgh

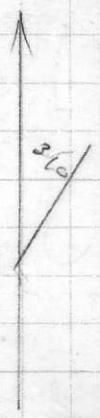
* Set Aneroid @ 3700' on (Drill-line No. 1. reported on Hodges (??) claim
 lower bridge on Wright Cr.) Drill-line No. 2 " just below Aspen Gulch see 1:50,000
 C. I. el. 3575' map

PEN ?
 MAPS

pos. by mag. on upper (shallow) beds of
 Wright & other tracks (note contour B.R. type)



← Re initial for dull access
 roads, drill holes & claim points.



WRIGHT CR. - PRELIM.
 1" = 400', June 9/73
 WS & D.R.

From F.P. Sam (0')	Descriptions	1-Stop for 200'	2-Stop for 1000'
Chain N., took B/S	00' Flat R-100', L 400' willow		
200'			
400'			
600'			
800'			
1000'	Valley flat narrows		
1200'			
1400'			
F.P. Sam } -1440	old post only		
= I.P. Marica }	none by T.P.C.		
Lower bridge -1580'			
From F.P. Sam 0'			
(Chain South)	flat, 0'L, 40'R		
200'	" " "		
400'	" " "		
600'	" 50'L 350 R		
800'	" 25'L 350 R		
1000'	" 50'L 300 R		
1200'	" 50'L 300 R CR 95'R		
1400'	" 50'L 350 R		
1600'	" 20'L " CR 70'R		
1800'	" 0'L 450 CR 100'R		
2000'	" 0'L 500		
F.P. Marica? - 2170	" "		
I.P. 5057 - 0'	" 150'L 500 R CR 100'R		
200'	" 50'L 500 R CR 80'R		
400'	" 20'L 600 R CR 100'R		
600'	" 40'L 650 R CR 40'R (Echannel?)		
800'	" 25'L 650 R CR 20'R (" " ?)		
1000'	" 0'L 650 R CR 10'R (" " ?)		
1200'			
2000'			
F.P. 5007 - 2400+			

ALL OTHERS LAINED OUT BY DON. SHIRLEY & CO.
 RAVEN (CR) CHECKED O.K BY TOM & SHIRLEY. CONNOLLY

Main area of (front) interest
 re poss. vol-grade potential

CHECK SURVEY
 LOCATION LINES of P.M.L.S
 WRIGHT CR, ATLINE M.D.
 FROM LOWER BRIDGE TO 1200'
 U/S OF SHAFTHOUSE
 W.H.S. & T.O. CONNOLLY, JUNE 16/72

Rt & Left hand facing down stream

Loc home in U/S - D/S direction below bridge
D/S - U/S above bridge.

