

11

from Certificates of Work  
Placer leases  
Vols 1-19.

800742  
Otter Creek

Dec 1934 - Development Work Otter Creek. Drifting 1500x10x7'  
to apply on placer lease 361, 362, 363, 381, 404, 626, 627,  
643, 710 - 653, 654, 655 + 656 (Moran)

May 1934 - Development Work. (2000.00) Incline, 170 feet drift  
+ hydraulicing to apply on lease 361, 362, 363, 381  
404, 626, 627 - 710 under consolidation #252 (W. Sweet)

1933 - Wrist Creek - Marley Moran - "Louise" reconstructing  
part of water system + proposition for adding further  
water system.

Sept 30/33 - Otter Creek - The work consists of hydraulic  
operations upon the group of lease of which  
the Paris lease is a part. #250 J.E. Moran.

same for Fox lease 250 - J.E. Moran

July 25/33 - Otter Creek. Fisher lease #250 The work consists  
of active hydraulic mining operations + proposed  
work upon the group of lease of which the  
Fisher is a part.

same for Marten - #250 (J.E. Moran)

same for Lynx + Bear #500.00

June 5/33 - Wrist Creek - Artic lease - #250 The work  
consisted of regular hydraulic mining operations  
in the development of this property & lay the sluice  
upon the bedrock. J.E. Moran for Dodge + Mercer.

Feb 1/33 - "Crown" Lease J.E. Moran, #250 The work consisted  
of hydraulic operation upon the group of leases on  
Otter Creek of which the Crown forms a part.

Feb 1/33 - Louise J.E. Moran, #250 - The work consists  
of repair work + construction work on the water  
flume + ditch leading water to Wrist Creek for  
use eventually in hydraulicing the ground of  
this lease. J.E. Moran

Sept 30/32 - Paris lease - J.E. Moran - The work consisted of  
active hydraulic mining operations upon the  
group of lease of which the Paris lease forms  
a part (#250)

Fox lease - same.

July 32 - Bear lease same

Lynx same.

Marten - same. Fisher same

March 1932 - J E Mason Crown. - Otter Ck. \$250

The work was performed upon a group of leases on Otter Creek of which the Crown lease forms a part. The work itself was hydraulic mining, sluicing gravel & general construction work in connection with work.

June/31 - J E Mason - Otter Creek - Paris - \$250 Hydraulic operation in the group of leases comprising Paris lease. Fisher lease same \$250

Exp " "  
 Ben.  
 Lignite  
 Material

May/31 - Wright Creek - J E Mason Arter - Hydraulic mining operation - piping, installing bedrock flume.

May/31 - Crown Creek (#404) J E Mason \$250 Otter Ck. Hydraulic mining operation were carried on throughout the mining season on the group of leases in which the Crown is comprised. Working of gravel for recovery of gold & installation of bedrock sluice

Feb/31 - Lignite lease J E Mason Wright Ck - The work consists of flume & ditching & being water from Union Creek to Wright Creek for purpose of mining the Lignite lease by hydraulic operation.

Nov/30 - City of Paris - Wright Creek - J E Mason \$750 The work consisted of enlargement & repair work in the ditch leading water from this present Wright Creek to Otter Creek & in construction work on flume leading water to this lease from Union Ck. On the ditch from Wright Creek small flumes were replaced by larger ones to accommodate greater flow of water.

Sept/1930 - Fox & Paris lease Otter Creek J E Mason \$500 These 2 leases are grouped with others & the work was performed mainly upon the Fisher lease. It consisted of actual hydraulic mining & ordinary development work in advancing sluices toward the bedrock.

Aug/1930 - Emswain Otter Creek - Marten, Lynx Bear.  
The work was done upon the Fisher lease - one of a group in which Marten & Bear & Lynx are registered. The work consists of actual sluicing by hydraulizing of the gravel on Fisher lease.

July 1930 - J. E. Moran - Otter Creek - Fisher lease - \$250  
Actual hydraulic mining operation - sluicing gravel.

Jan 1930 - J. E. Moran - Whiff Creek, The work performed here consists of development of water facilities which has for partial purpose the deposition of water for making possible the exploitation of this lease by hydraulic mining, said development consisting of flume & ditch work for keeping water from Union Creek to Whiff Creek.

Jan 1930 - Crown - J. E. Moran - \$250 The work done on this group in which the crown is incorporated consists of construction of pipe line for operating on the group & actual hydraulizing on the Fisher lease also a member of the group.

Nov 1929 - City of Paris - Whiff Creek. The work done on City of Paris lease consisted in cleaning & enlarging ditch which delivers water from intake on City of Paris lease to a dam on Otter Creek from which the water is taken for hydraulic mining on Otter Creek.

Sept/29 - "Paris" John Eaton Moran - \$250  
Hydraulic mining operation  
For same

Aug/29 - "Marten, Lynx & Bear - J. E. Moran.  
The work has been done on the group of which Marten, Bear & Lynx are units. Pipe lines have been laid - ditches constructed & hydraulic operations carried on aggregating very much more in value than the accounts set forth above.



- May 1929 - J.E. Mason - Otter Creek - Fisher  
The work consisted of logging operation on this lease, clearing brush & burning it, hauling pipe & grout to their position on this lease & the construction of road.
- Sept 29 - J.E. Mason. Otter Creek - Crown.  
Flume building & ditching
- Oct 1928 - H. J. Malvern - City of Paris Witt Ch.  
cleaning ditch repairing dam, surveying work & general mining expenditure
- Sept 1927 - H. Malvern - Otter Ch - Fay.  
moving hydraulic pipe extending supply ditch hydraulizing in pit & general mining work.  
"Paris" - same
- Aug 1928 - J.E. Mason - Otter Creek. Marten, Lynx & Bear. - repair work, moving plant extending water supply system  
Fisher - same.
- March 1928 - J.E. Mason "Crown" Otter Creek.  
This work consists of hydraulizing performed in the summer of 1927 upon the group of which the "Crown" lease is a part.
- Nov 27 - J.E. Mason - City of Paris - Witt Creek.  
cleaning & repairing ditches and attending to water.
- Sept 27 J.E. Mason - "Paris" Otter - Hydraulizing
- Aug 27 - H. Malvern - Marten Lynx & Bear Otter Ch.  
Work consists of hydraulic mining carried on upon the group of hydraulic mining lease of which these leases are a part.
- July 27 - H. Malvern - Fisher - Otter Creek  
The work consists entirely of hydraulic mining carried on upon the group of leases of which the Fisher is one
- Oct 1928 - City of Paris - H. Malvern Witt Creek. 750  
Ditch extension 2000 feet.
- Oct 1928 - "Crown Fay" Otter - Hydraulic operation  
from maps October enclosure 1923. (1500)

August 1921 - H. Malvern - Paris' Otter Creek. \$750  
 Hydraulic mining operations with crew  
 of 8 men between 28 Aug 1920 + 20 Oct '20.  
 74 days work @ \$50 3,700  
 Less applied on "mainten" at 22.50  
 6/8/21 1,450

The above includes powder + other  
 mining supplies.

Aug 1921 - H. Malvern - Martin Lynn + Bear Bench.  
 22 + 50 see above

Oct 1920 - H. Malvern - London, Melbourne Paris, Martin  
 Lynn Bear Tax + Lagoon Creek. \$8000  
 Work mainly on "Bear" lease.  
 Preparatory work in spring setting, pipe line  
 + monitor cleaning ditch + flumes. Apr 25  
 to May 15'. Then hydraulic work  
 moving 200,000 yds of overburden + gravel.  
 picing ended Oct 17, 1920

Average 9 men payroll 9000  
 Total expense including explosives,  
 teaming, logging cartwork, manger  
 expense, tools, lumber, wages etc abt \$15000

Oct 1920 - H. Malvern Swift Creek - City of Paris \$1000  
 Contracted 2000 linear feet of ditch 3' wide  
 on top 18 inches at bottom 20 inches deep,  
 at a cost of 50 cent per linear foot, and  
 ground sluiced a cut about 300 ft.  
 in length 20' wide + 10-15' deep for  
 purpose of opening up deep ground on  
 said lease.





cont'd.

The ground worked this season consisted of a band 450 feet long (up & down stream) and about 100 feet wide, such band or strip being exactly parallel with last year's work. The intention was to widen the last year's strip & determine the breadth of channel & so incidentally recover whatever gold laid on the hardpan forming false bed rock in that vicinity. At the same time a way was opened to extend the main sluice up stream in a straight line, which was essential to future operations. The right limit rim was uncovered along this year's pit & the breadth of channel found to be a little under 200 feet, the left limit rim was determined last year.

The values in the gravel resting on the hardpan were very low, as all the portion of the pit along the right limit rim was filled with blue mud & angular boulders (slide material) and baven.

The gold recovered came mostly from the head of the pit where that slide ended and where good prospects were obtained.

The hardpan at the head of the pit on the right limit side is giving place to flat rock rim indicating proximity of real bedrock. It is likely that the work are approaching the point where the hardpan merges in to the bedrock and reasonable hopes can be entertained of having bedrock next year in the upper or upstream part of the 1920 pit.

The loss incurred in this season's operation is between 9 & 10,000 dollars against \$6,000 last year but the work had to be done to reach bedrock in good mining shape for the future.

[8]

contd

Number of men employed varied from 6-10 with an average of 8 under J E Mason or foreman.

It is evident that the pay resting on the hard pan false bedrock is only an indication of the real pay resting farther upstream on the real bedrock & such indication is promising.

All expenses included

Cost of treating one cubic yard of material - a little under 7 cents  
Cost of washing one sq. yard of bottom area including shipping, washing & cleaning up:  $3 \frac{25}{100}$  or about 35¢ sq ft.

I join a rough sketch giving approximate position of last season's & this season's work.

Oct 29/1918 - Steward H. Nelson. Lower end of after 18th toward

Work began March 15, 1918 & proceeded continuously until the end of Oct with a number of men varying from a minimum of four to a maximum of ten, with an average of 6, under the supervision of J E Mason. About 1200 feet of new sluice were constructed in the spring & the holes for remaining 3500 feet of sluice were renewed. About 15,000 planks 10 x 10 x 10 were sawed for that purpose besides lumber for benches etc.

About 200,000 yd. (cubic) of material were removed during the season & this removal exposed about 40,000 sq ft. of the hard pan bottom, which underlays the gravel in that portion of the valley. No bed rock at all was exposed, same being at a greater depth & below sluicing grade. Gold values were disappointing, the result of the seasons operation being a



loss of several thousand dollars; very high wages & the very high price charged by local merchants for everything contributed to that loss.

There was exceptionally high water during the beginning of mining season, which nearly caused great damage, balance of season very exceptionally dry, there being no river to speak of. A successful trial was made of ruffling the sluice with very heavy flat rocks, held in place by sand boards & alternate rows of wooden blocks. This may solve the big expense of maintaining in good condition the floor of 450 feet of sluice boxes with wooden blocks.

A successful trial was also made of working the last pit of the season with a short sluice & having a dump machine (giant) at end of that short sluice to stake heavy tailings on, worked out ground. Fine material finding its way through the main sluice; this being a decided experiment upon putting all material through the main sluice. It is evident that with the exigencies of labor & the high cost of provisions, teaming, horsefeed etc, nothing but rich placer ground can be worked at the actual value of gold.

A drift will be seen this winter to try & locate better pay. If such better pay is not located, mining operation will be suspended until cost of operation will have sufficiently decreased.

The average price paid common labor per day was 7 dollars, skilled labor was almost unobtainable.

During the previous winter a shaft was sunk along the sluice down stream from the hydraulic pits & did not reach bedrock at a depth of 52 feet below the sluice, when it

110  
cont

was abandoned. This condemns the lower part of the creek as a mining possibility.

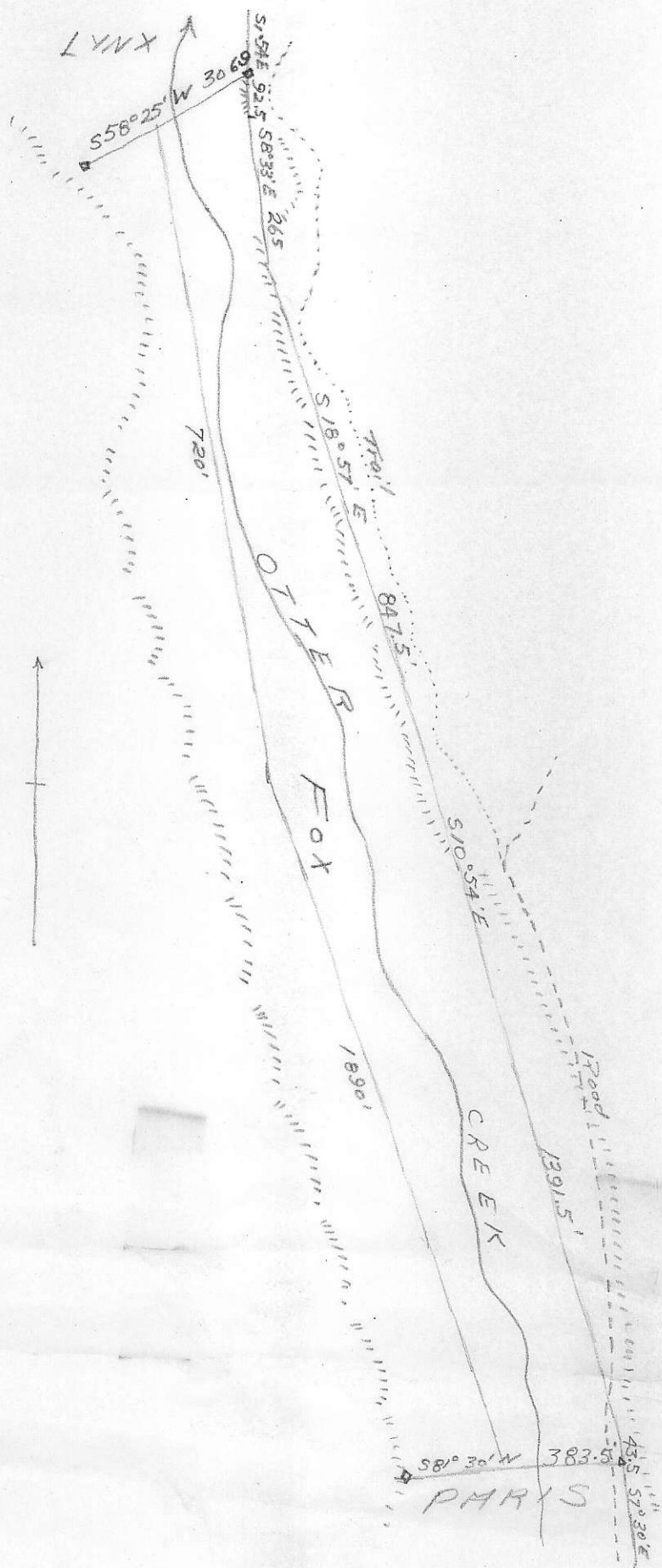
About 1500 " of water are used in the sluice; when pining is going on, with that volume of water, a fair quantity of material is worked through the sluice on a 5% grade a heavier grade being unobtainable. Oct 30, 1918 Hm

4 Oct 1905

John Fountain  
Hazelton.

"Fox" P.M.L.

#381





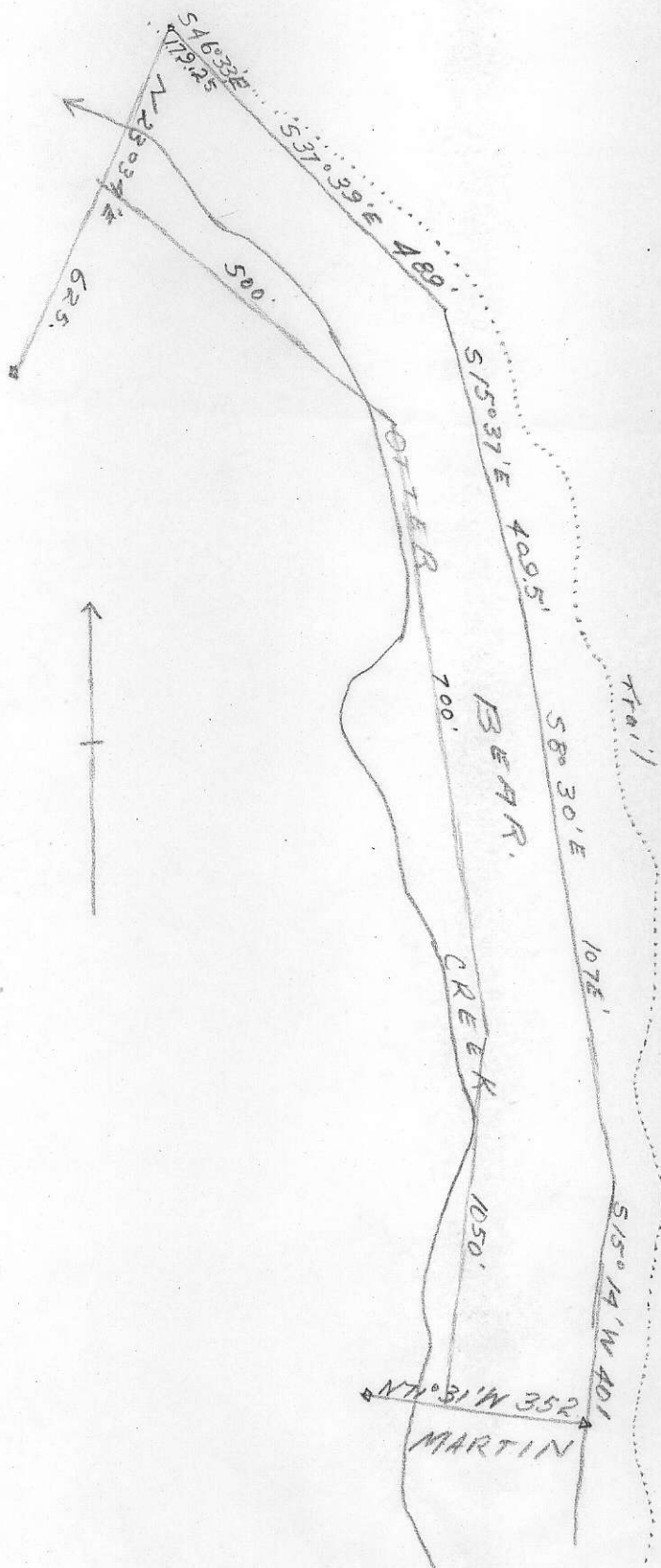
6 Dec 1905

James D. Lumsden

Atlin

"BEAR"

# 363



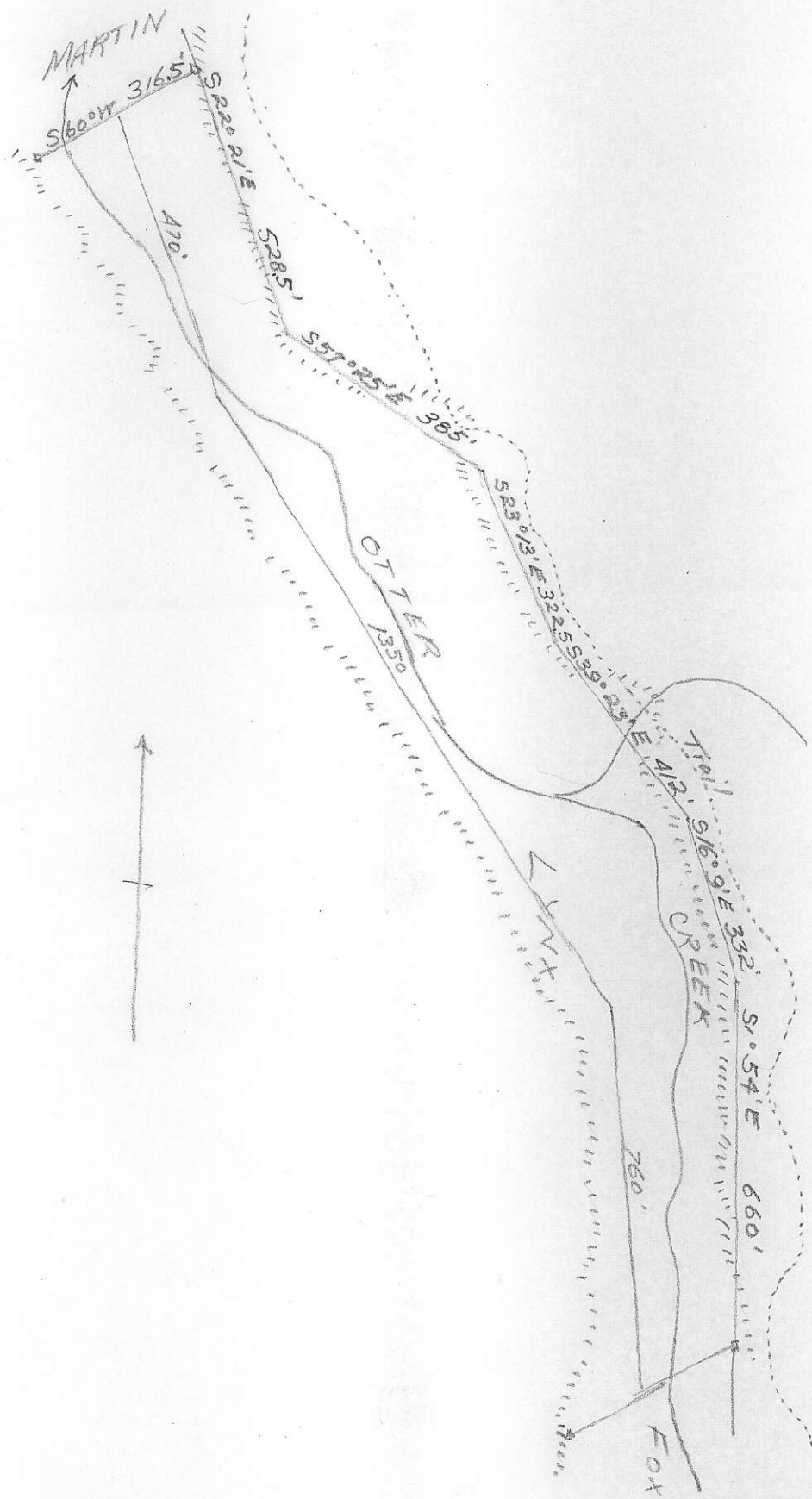
6 December 1905

Elizabeth Williams

Atlin

"LYNX"

# 362



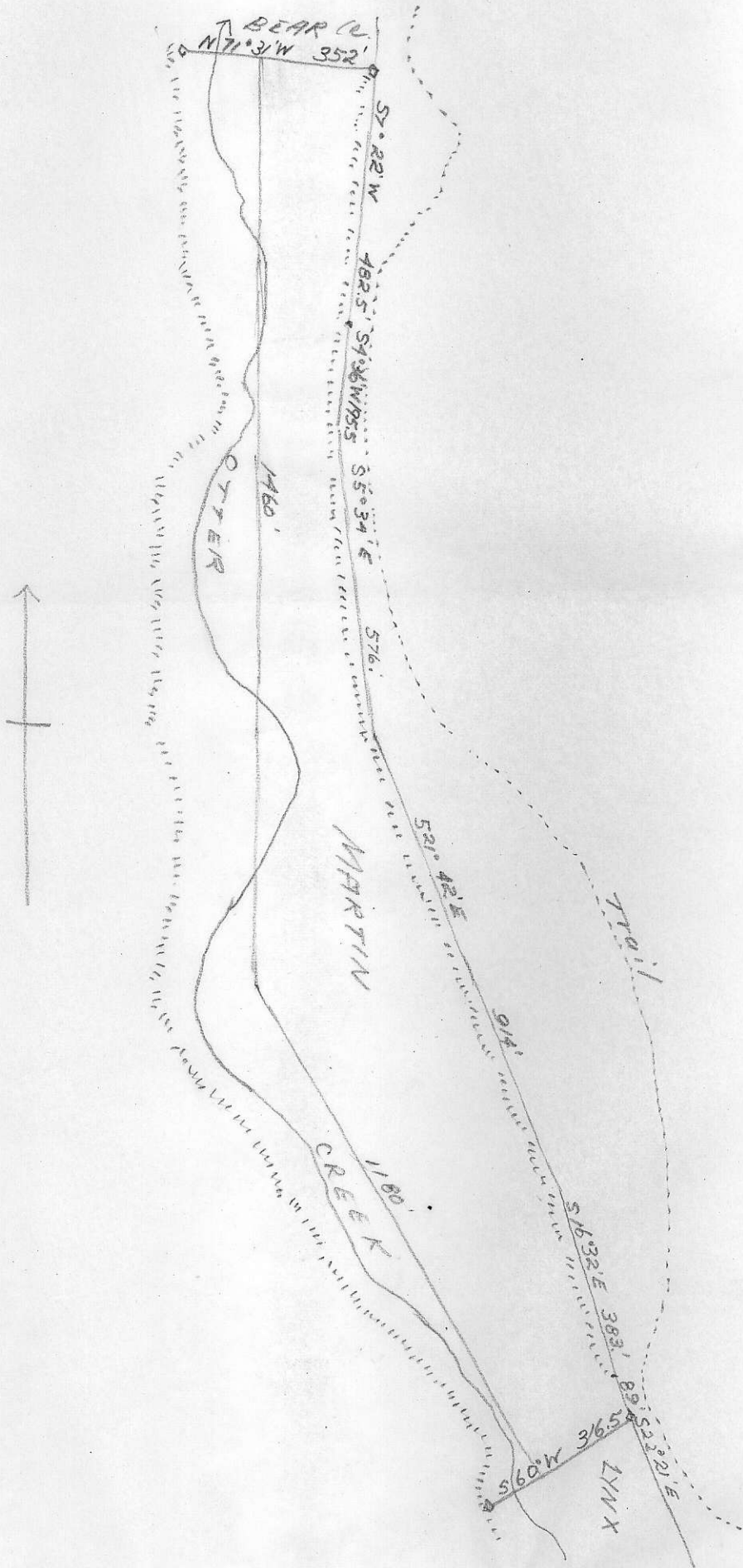
7 August 1905

John Williams

Atlin

"MARTIN"

# 361





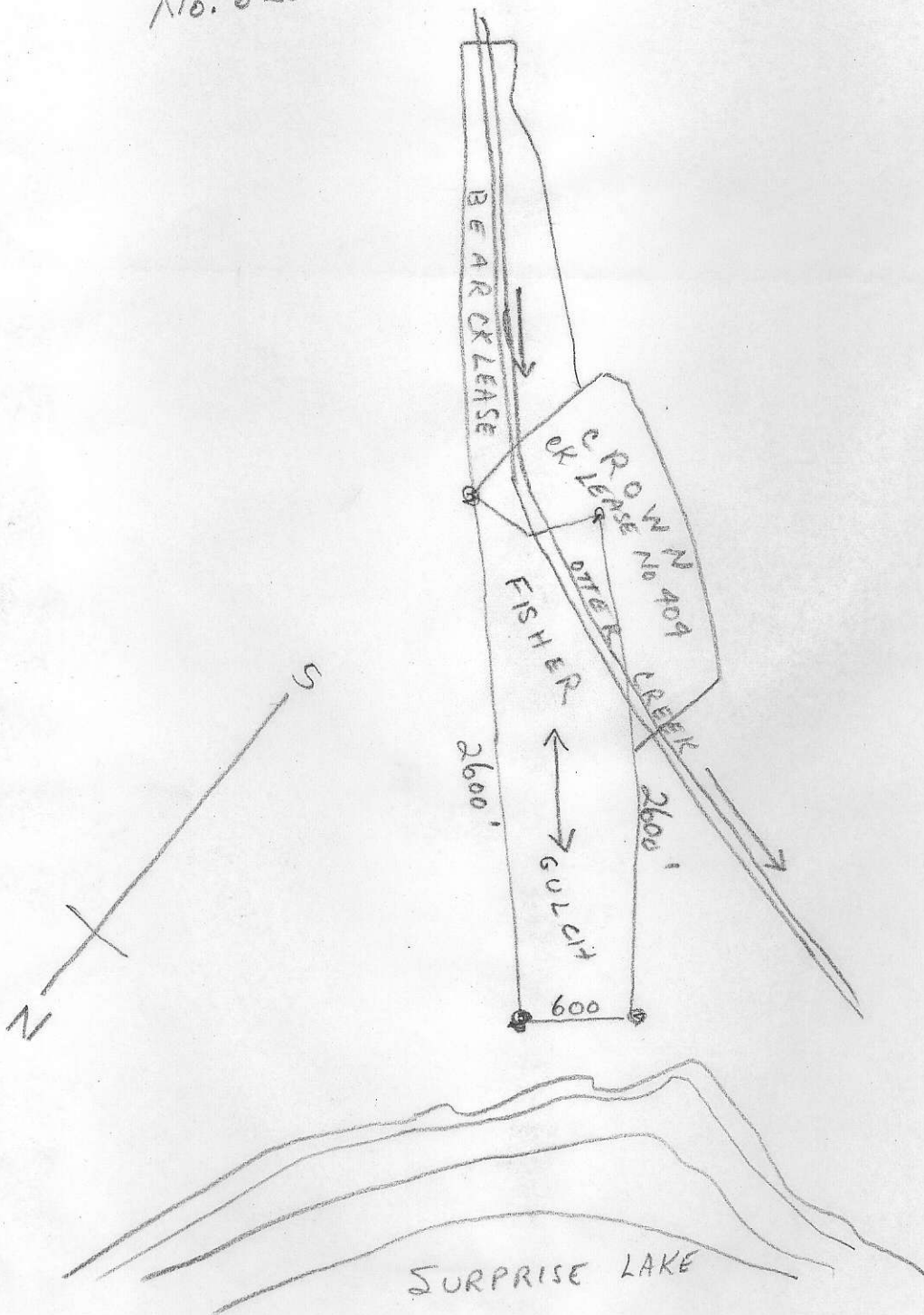
6 Dec. 1926.

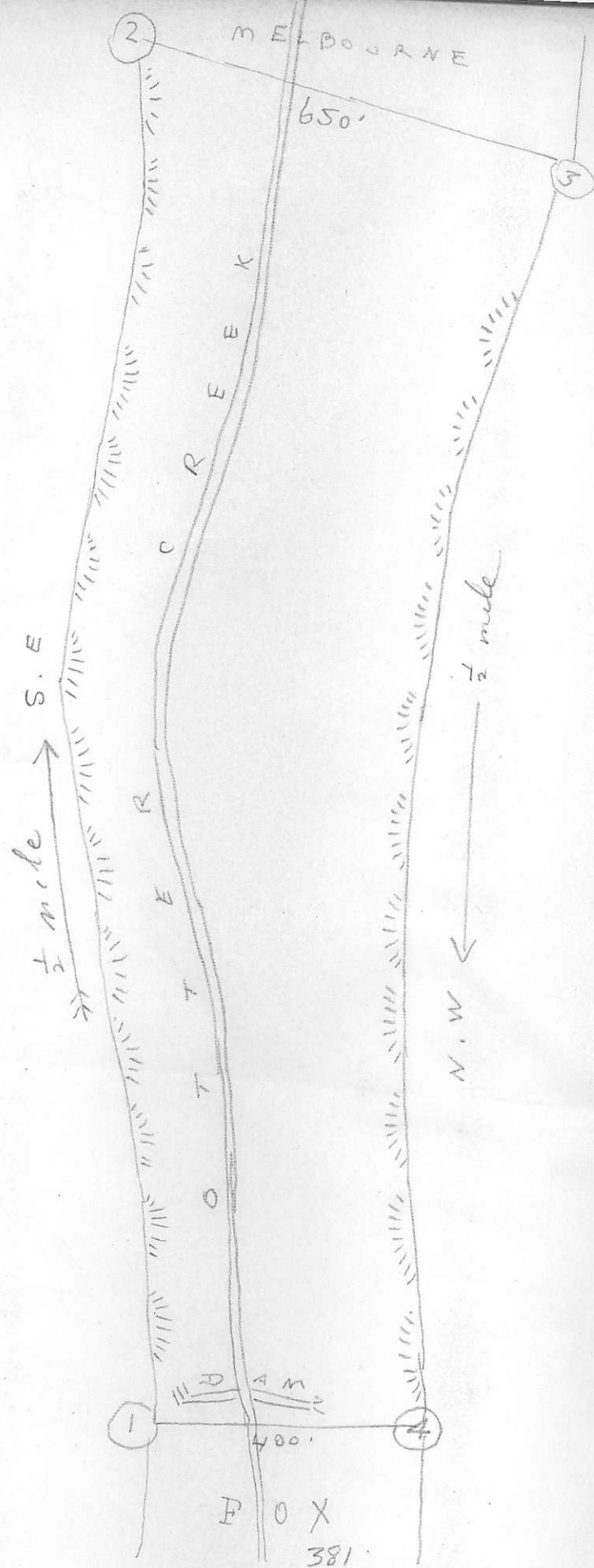
Paul Malvin

55 acres.

"FISHER"

No. 626





Sketch plan  
of Paris  
Creek Lease  
Other Creek  
attn B.C.

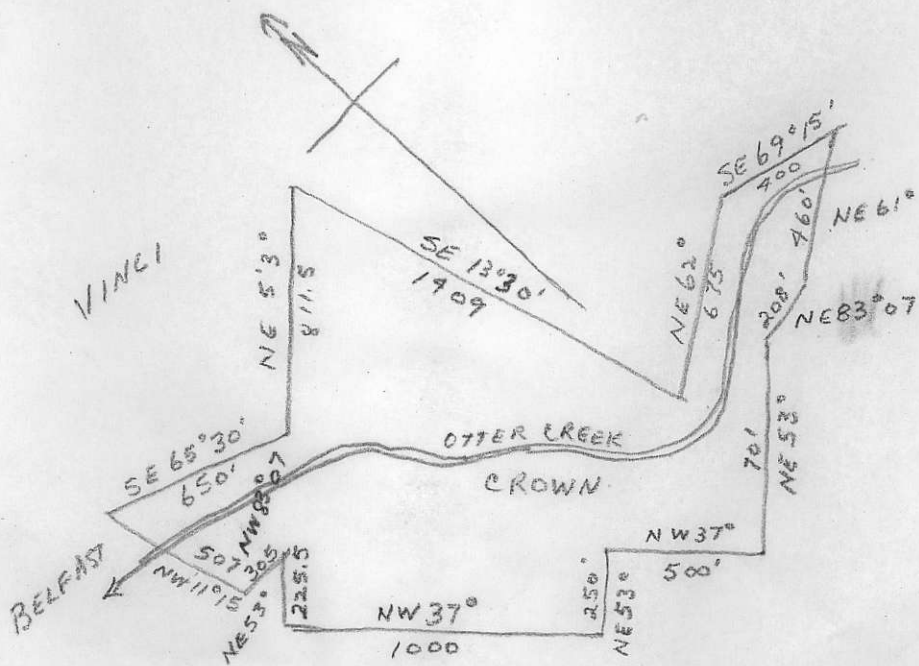
ATLINA LAKE MINING  
H. Norsworthy

The lease covers the ground  
formerly occupied by the  
"Paris" Creek lease 284 now  
lapsed + is to be known as  
the PARIS Creek P.M.L. 627.

6 Dec 1926  
PARIS  
# 627

6 Dec. 1906  
 John Dunham  
 Atlin  
 "CROWN"  
 # 404

All ground on Otter Creek in the Atlin Mining  
 Division aforesaid, adjoining and lying  
 Easterly or upstream from the "Belfast" Creek  
 Lease and the "Vinci" Ranch lease and between  
 same and the "Bear" Creek lease.



Plan  
 of  
 Crown Creek Lease Atlin Div.  
 Cassiar District  
 Scale 600 ft per inch  
 Edward G. Wilkinson PLS