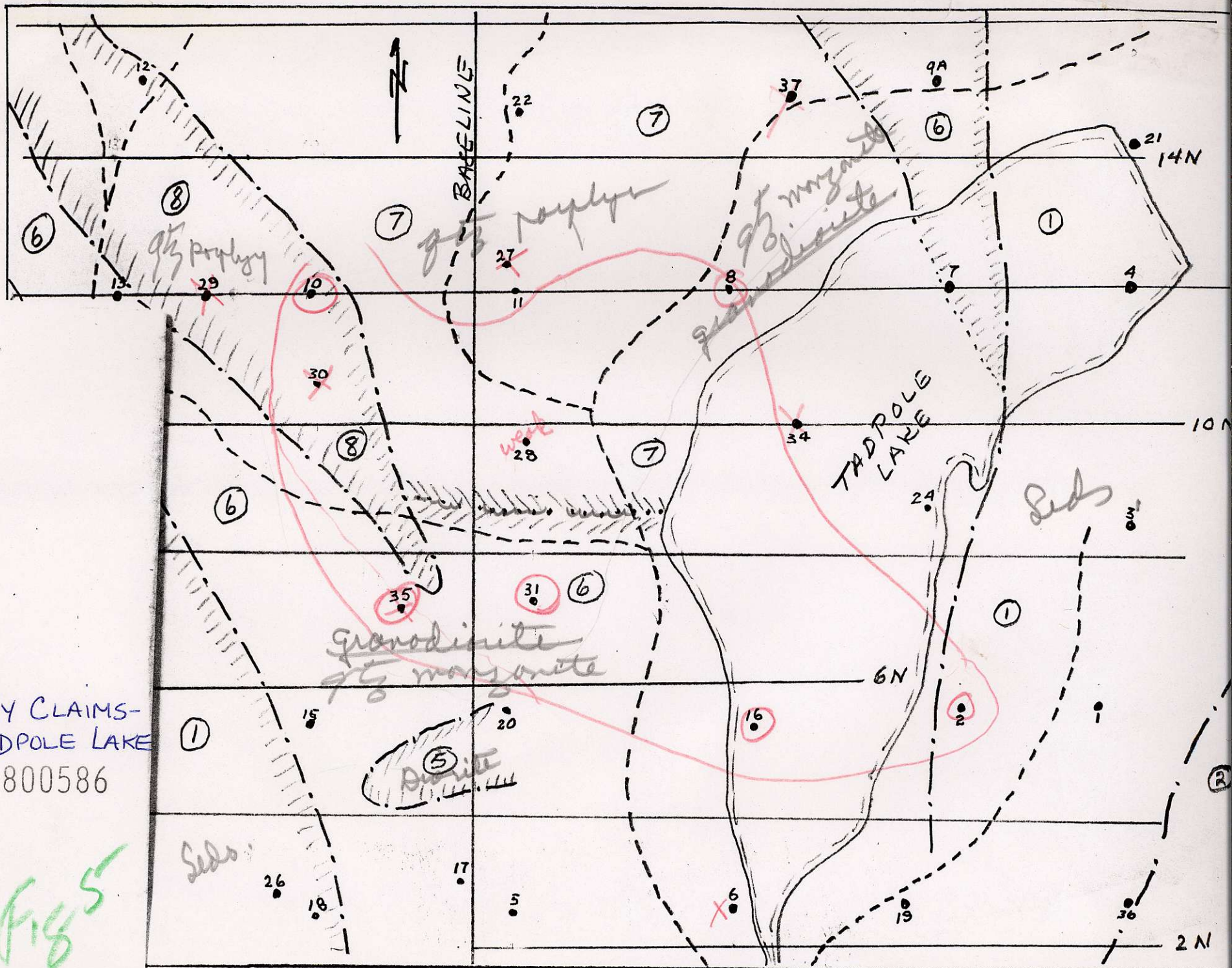
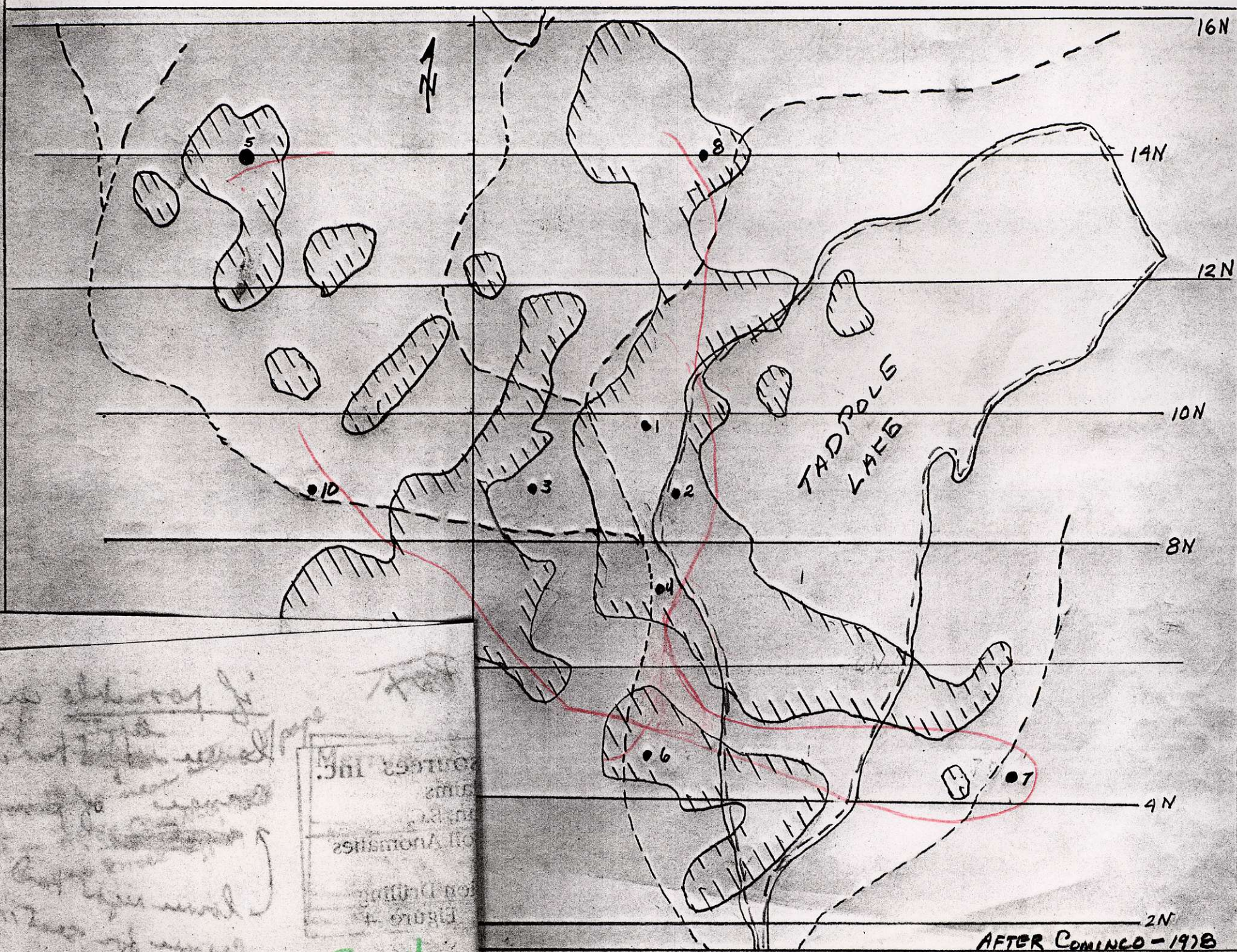


My CLAIMS-  
TADPOLE LAKE  
800586

Fig 5





MILWAUKEE  
INC.  
of Wisconsin  
Litho 4

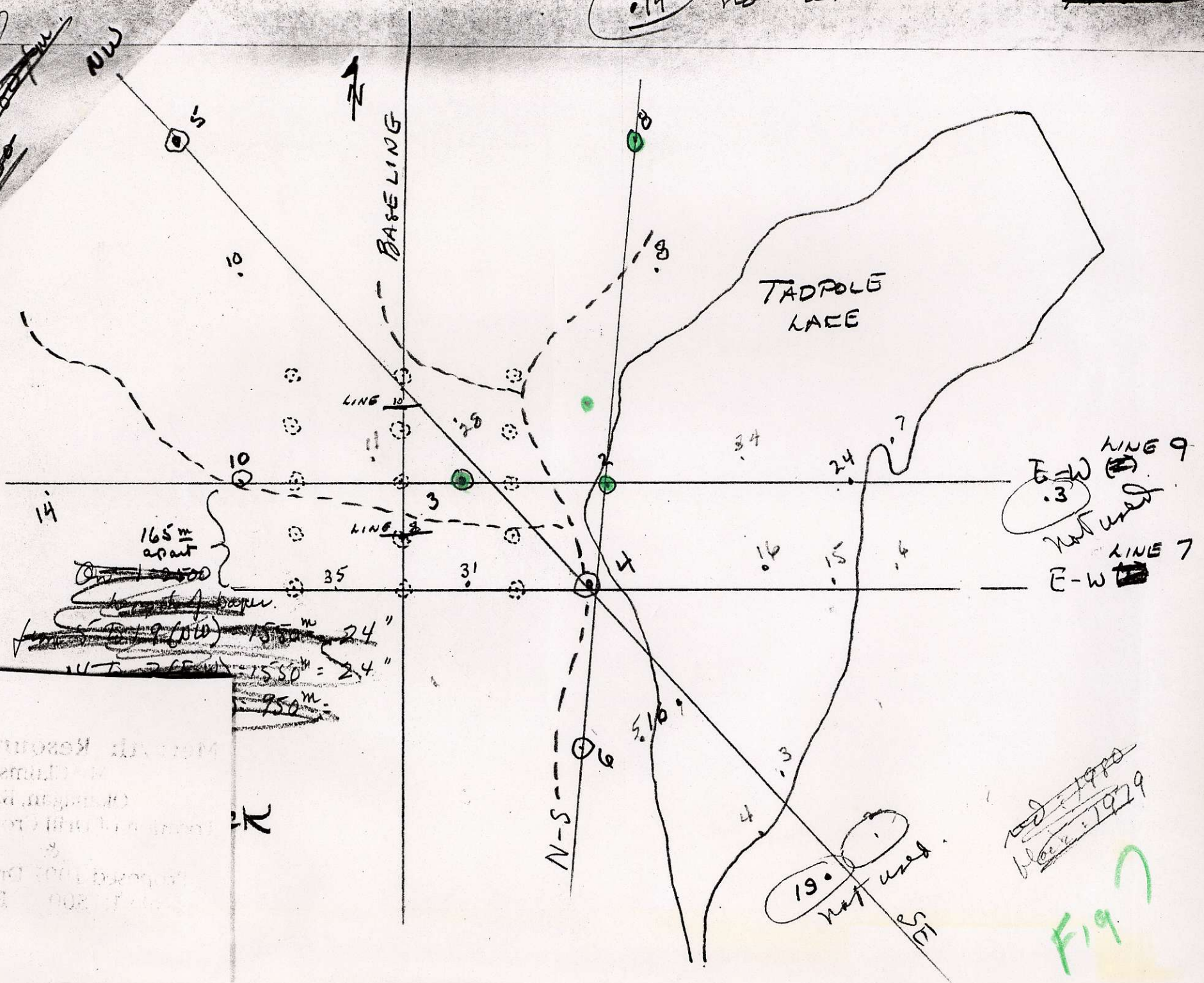
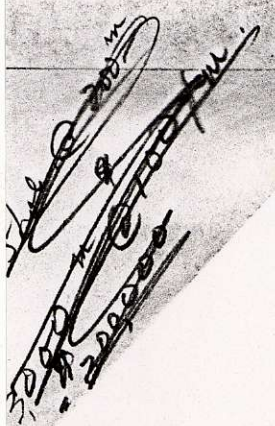
F. 84

AFTER COMING - 1978

1978

0.14 not used

1.2500



165m apart

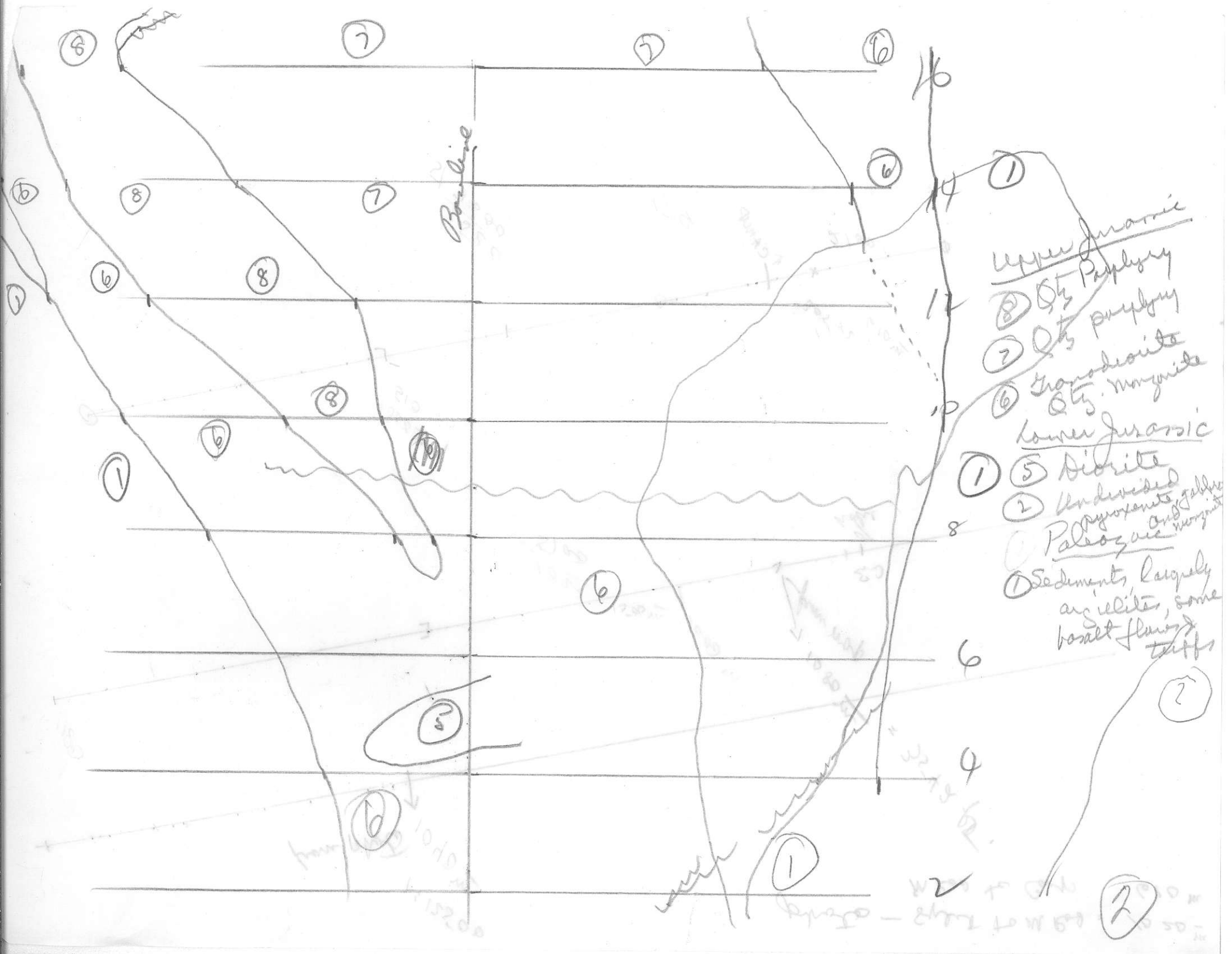
~~150m~~  
~~150m~~  
1550m = 24"  
750m

LINE 9  
E-W  
not used  
LINE 7  
E-W

19. not used  
SE

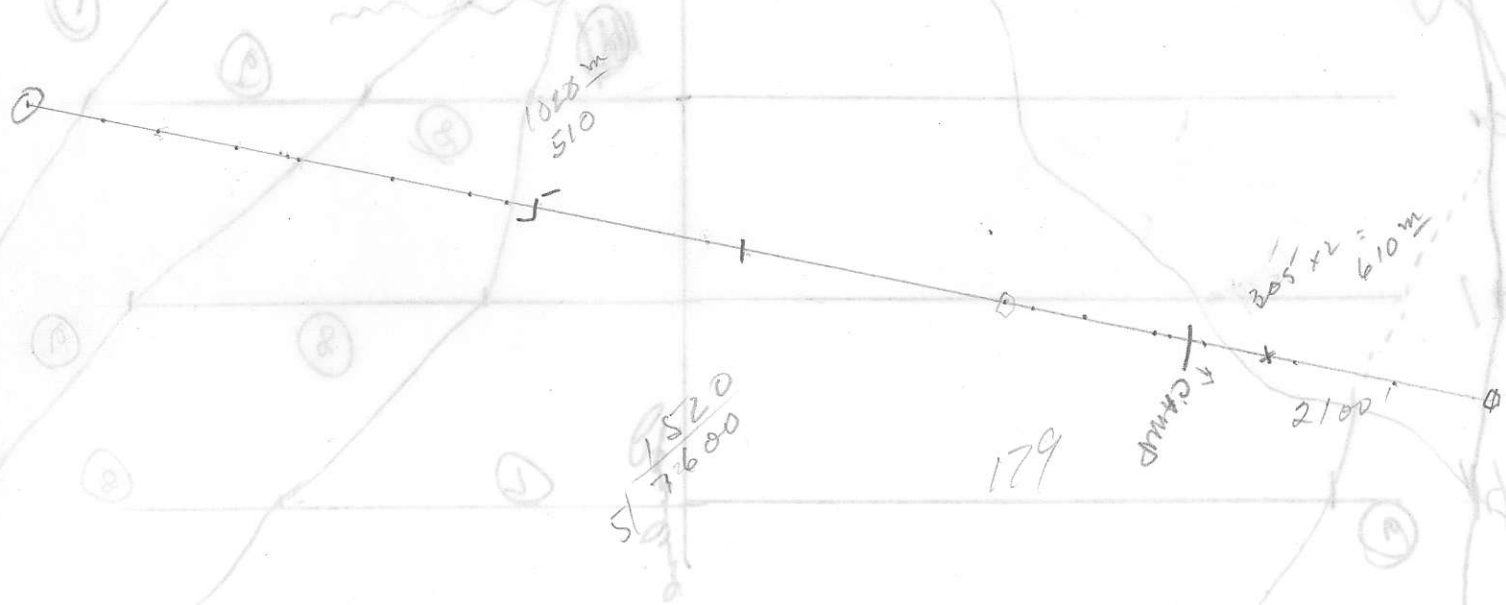
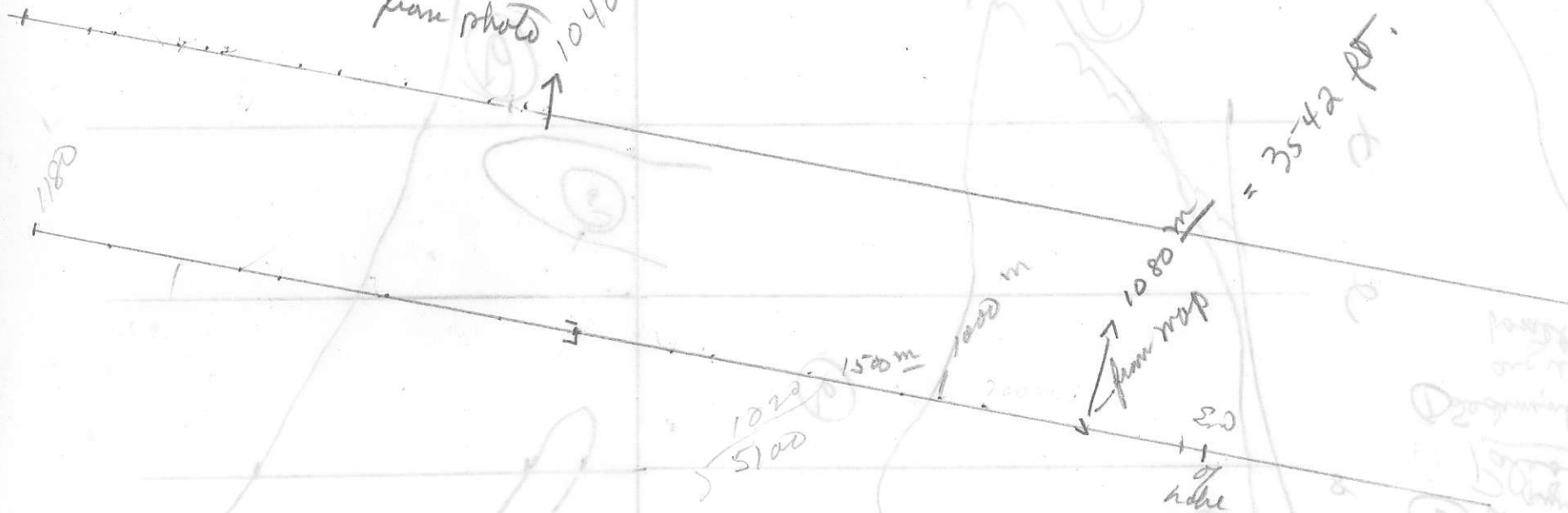
1990  
1979

Fig 7



from photo 1:12500  
1040 m

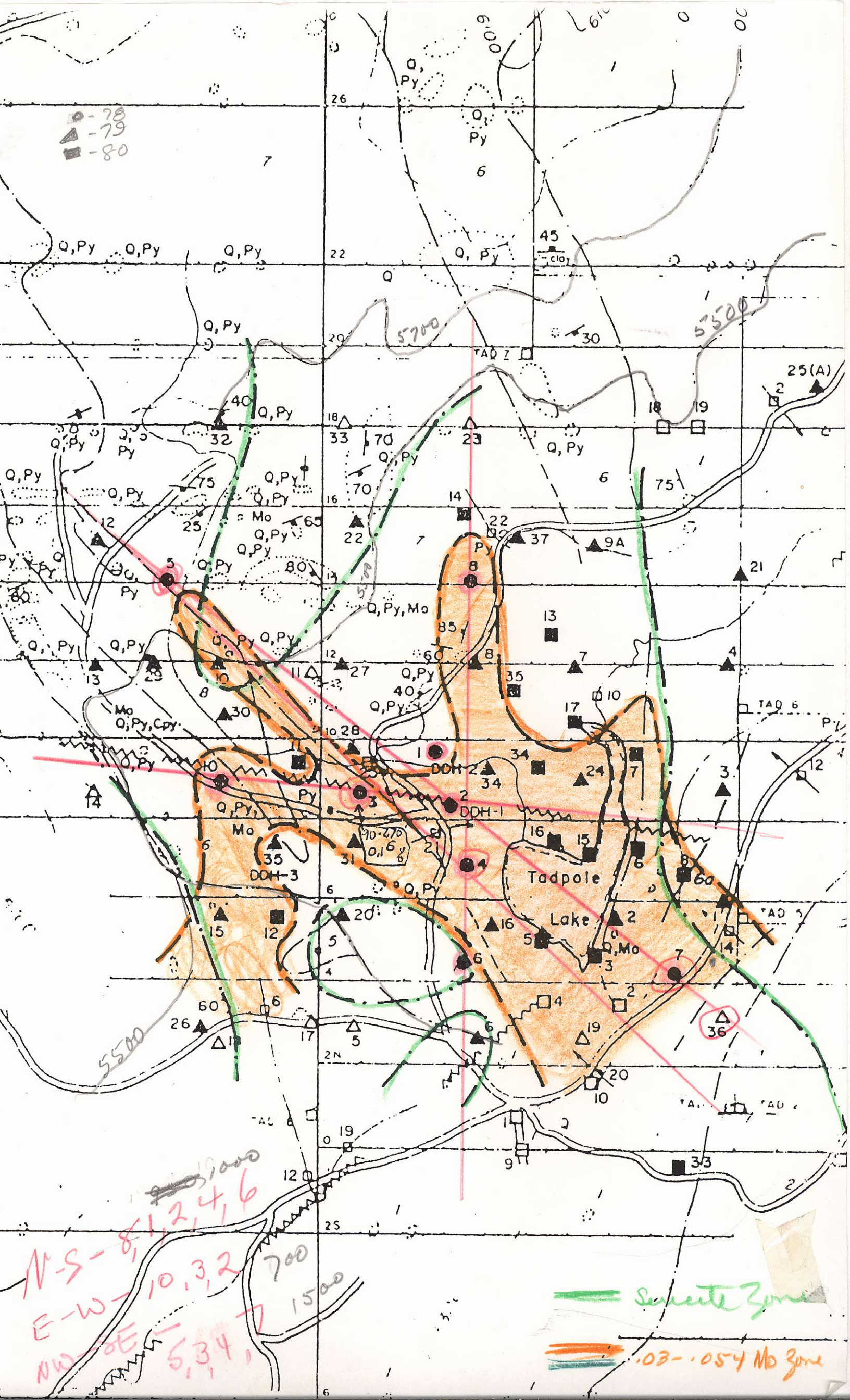
photo - split to M Rod = 1020 m  
M Rod to Camp 610 m

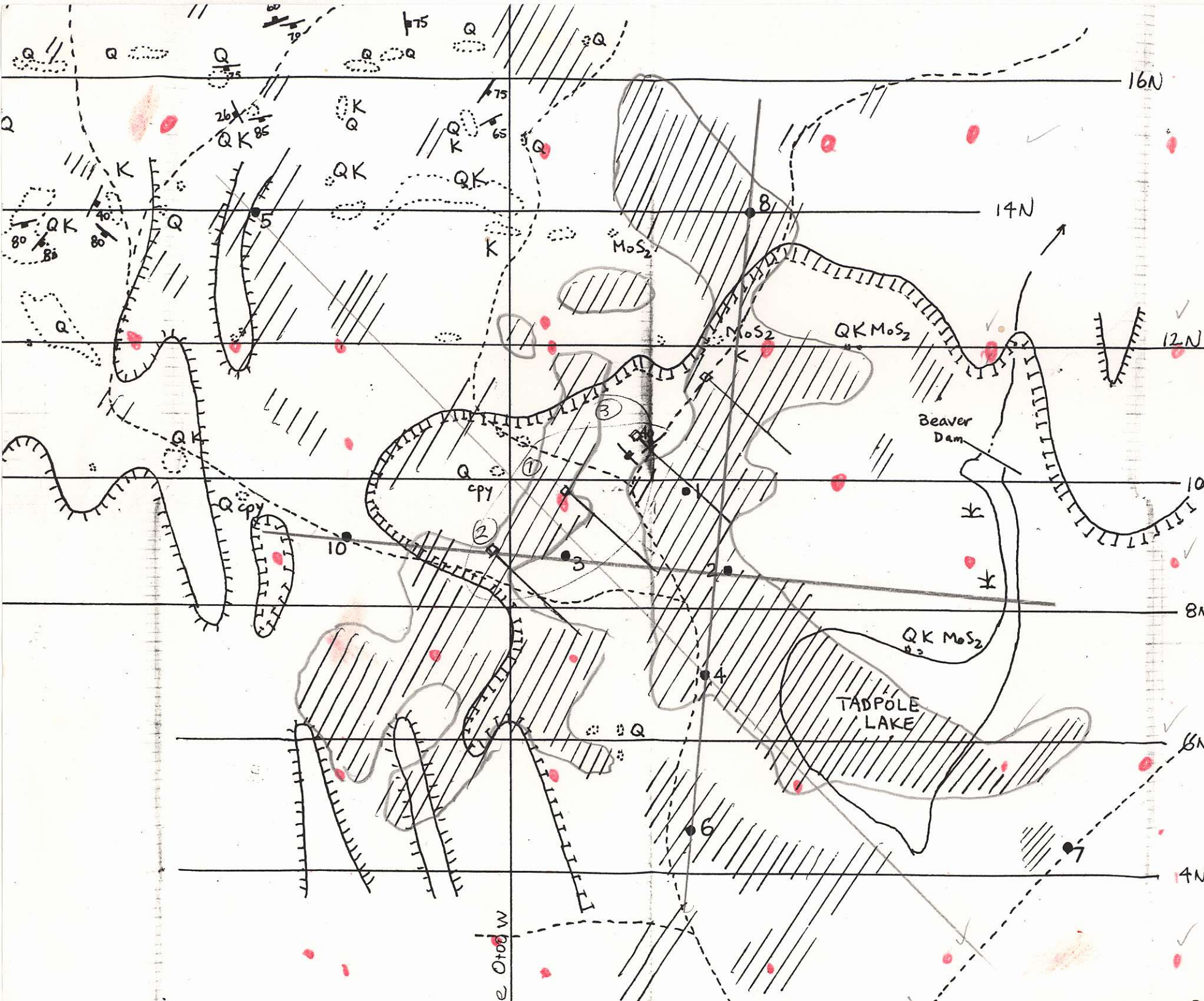


1520 / 7600

179

*[Faint, illegible handwritten notes and scribbles on the right side of the page.]*





- 1978 Percussion drill hole
- ✱ Fracture
- Outerop
- - - Road
- - -> Creek
- /// MoS<sub>2</sub> soil anomaly
- ⊖ Mag low
- ⊕ Mag High
- Q Quartz
- K K-spar
- MoS<sub>2</sub> Molybdenite
- Cpy Chalcopyrite

Note: Pyrite is ubiquitous

0 .1 .2 Km.

Scale 1:5,000

↑ N

Proposed Diamond Drill Hole Dip -60

1978