

REPORT

800472

on the

**Phase 2 Operation
(Diamond Drilling)**

Concerning Claims:

L752 - Fontenoy
L753 - Last Chance

Greenwood Mining Division
British Columbia

CO-ORDINATES

North 49° 07' Latitude
West 119° 10' Longituds
N.T.S. 82 E/3 East

For

BRAVO RESOURCES INC.

**930 - 470 GRANVILLE STREET,
VANCOUVER, B.C.**

By

W.G. HAINSWORTH, P.ENG.

INTERNATIONAL FIELD SERVCS INC.

570 - 789 WEST PENDER STREET.

VANCOUVER , B.C. V6C 1H2

July 21, 1989

TABLE OF CONTENTS

	Page
Introduction	1
Location and Access.	2
Property	3
General and Local Geology.	4
Past Operations.	5
Diamond Drill Program.	6
Cost Figures	8
Recommendations.	9
Certificate.	10
Bibliographies	11

MAPS

Location map Fig. 1	following page	2
Claim map Fig. 2	following page	3
Drill Layout Fig. 3.	following page	6
Shaft Sampling Fig. 4.	following page	5

Addendums

Drill Sections

- Fig. 8 - Holes 89-1 and 89-2.
- Fig. 5 - Holes 89-3 and 89-4
- Fig. 6 - Holes 89-5 and 89-6
- Fig. 7 - Hole 89-7

Diamond Drill Logs
Assay Certificates

INTERNATIONAL FIELD SERVICES INC.

Consultation, Exploration & Management

SUITE 905
837 WEST HASTINGS STREET
VANCOUVER, BRITISH COLUMBIA
V6C 1B6 (604) 687-6930

INTRODUCTION

This report covers the results of work recently completed on the two Crown - granted claims of Bravo Resource Inc. In addition the report briefly summarizes work done on the claims and adjoining claims previously optioned by the company.

Operations on the claims were carried out from June 5th to June 18th, 1989. The location of the holes was spotted by the writer on June 5th. Drilling by Le Clerc Drillers Ltd. of Beaverdale, B.C. began on June 6th and was completed by June 14th, 1989.

The field operations carried out the Phase 2 recommendations as advanced in the writers reports of February 9, 1989 and April 6, 1987.

LOCATION AND ACCESS

The claim group of Bravo Resources Inc. is located about 9 miles north of the International Boundary, 7 miles (12 kilometers) north of Bridesville and 16 miles (27 kilometers) west of Rock Creek, both localities on the Transprovincial Highway No. 3. The claims are accessed by travelling some 12 kilometers north on the well-graveled Mount Baldy turn off road to where a 370 meter (1200 foot) bush road from this point leads to the main Fontenoy shaft. Another bush road, suitable for a four wheel drive vehicle, cuts off the Mount Baldy road and travels up the east side of Rock Creek passing through the northeastern section of the Kettle claims. Numerous access roads lead off this into various sections of the claims.

The Bravo property is within the Greenwood Mining Division with the claim block centering on Latitude 49° 07' North and Longitude 119° 10' West. Its National Topographic Series is 82E/3 East.

BRAVO RESOURCES INC.

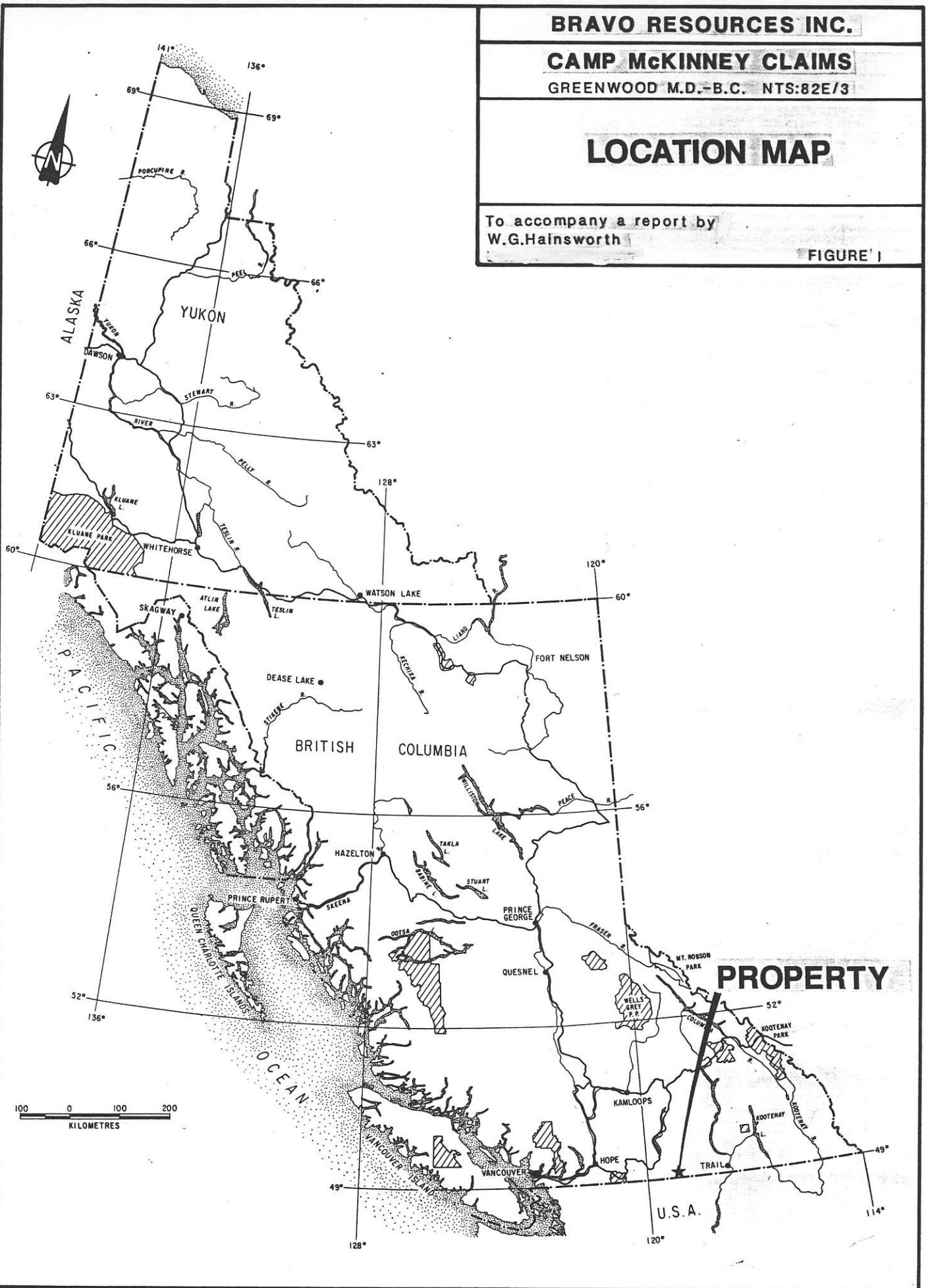
CAMP MCKINNEY CLAIMS

GREENWOOD M.D.-B.C. NTS:82E/3

LOCATION MAP

To accompany a report by
W.G.Hainsworth

FIGURE 1



PROPERTY

The West Monashee Mountains property of Bravo is within the Greenwood Mining Division.

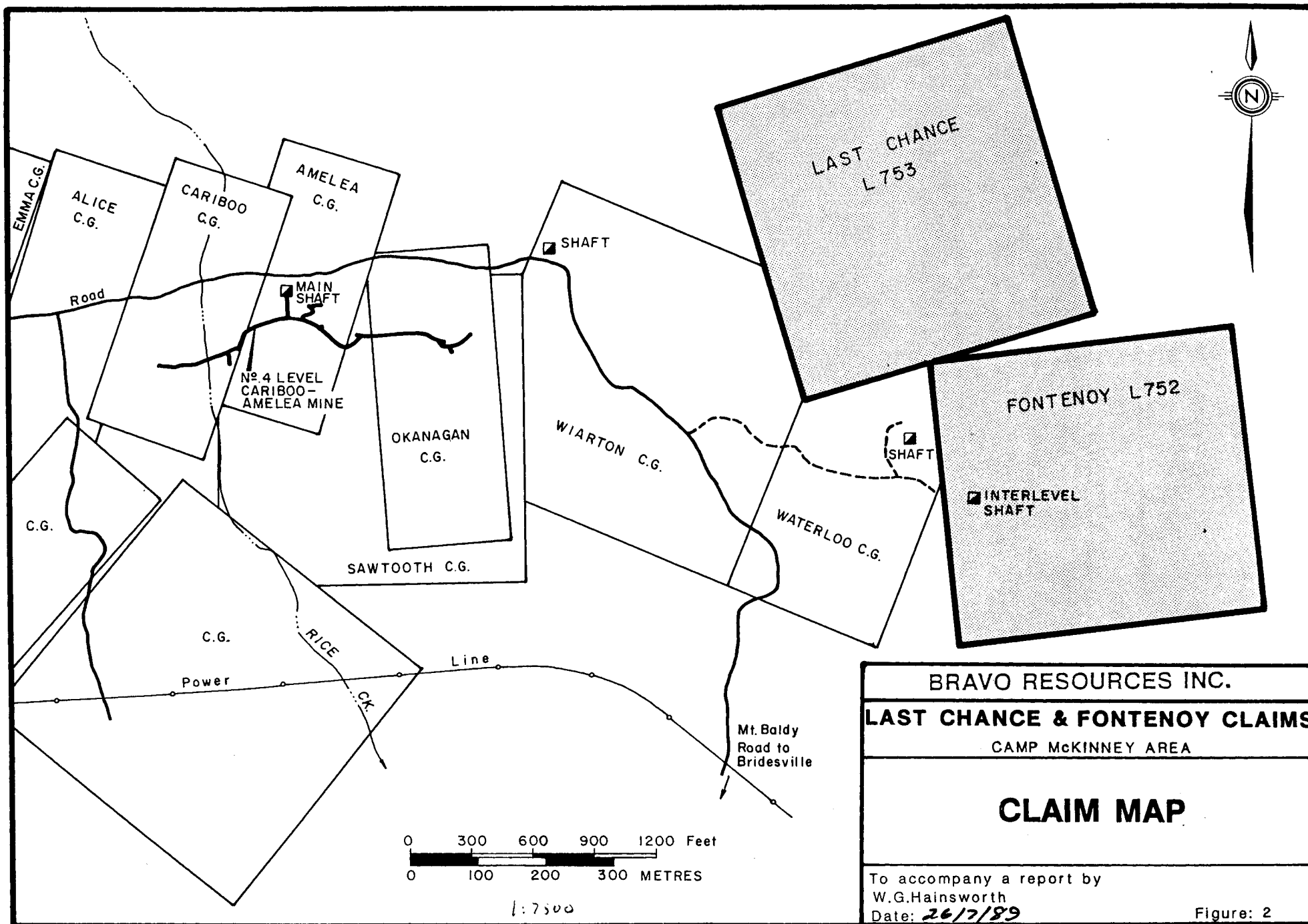
The holdings consist of two Crown - Granted claims kept in good standing. An optioned adjoining group was recently dropped. Figure 2 shows the relationship of the block of claims to the adjoining old producer, the Cariboo - Amelea, and surrounding claims.

In total the property occupies approximately 38.3 hectares (94.7 acres) with the claims being at an elevation of 1340 to 1370 meters (4400 to 4500 feet) in a fairly flat section of the mountain ridge.

The Claims

<u>Name</u>	<u>Record No.</u>	<u>Units</u>	<u>Expiry Date</u>	<u>Size</u>
Last Chance	L753	1	--	46.83
Fontenoy	L752	1	--	47.86

Rock Creek (Jolly Creek), a southeast running stream, is at its closest point, some 1370 meters (4500 feet) north-northeast of the Fontenoy inclined shaft while Rice Creek is 1035 meters (3400 feet) west of the shaft. The Waterloo shaft, a vertical structure, is approximately 300 meters (1,000 feet) to the northwest of the Fontenoy shaft.



BRAVO RESOURCES INC.
LAST CHANCE & FONTENOY CLAIMS
 CAMP MCKINNEY AREA

CLAIM MAP

To accompany a report by
 W.G.Hainsworth
 Date: 26/7/89

Figure: 2

GENERAL AND LOCAL GEOLOGY

Glacial deposits cover a good portion of the area, but near Baldy Mountain in the Camp McKinney area, rock exposures are numerous.

The rocks in the area belong to the Anarchist series of the upper Triassic Era. The Osoyoos grandiorite batholith intrudes the formations to the west and south-west.

The Anarchist series, consisting primarily of sedimentary origin formations, include pure and impure quartzites, greenstones and limestone. Alteration has been extensive but no schistosity has been developed within the formations. Recrystallization and silicification are general.

The normal strike of the sedimentary beds is northwesterly with a modest northeasterly dip. Locally there is some folding but of a minor nature. Faulting, however, is widespread and has had noticeable effects on mining operation. The main Cariboo vein was offset to the south at the east end during the initial 1894-1903 mining and was not relocated until the 1958 drilling and subsequent underground operation. The values are reported to have fallen off in eastern drifting.

On the Crown-grants, examination of the rock formations in the vicinity of the Fontenoy shaft revealed the bulk of the beds to be primarily siliceous argillites. The trend was northwest with the dip to the northeast. Several intercalated bands of highly silicified greenstones were observed in the general vicinity.

A deep gulley to the east of the main workings and running north-south suggests a surface indication of a fault structure.

PAST OPERATIONS

Following a qualifying report by the writer dated April 6, 1987 and Amended January 5, 1988, Bravo Resources Inc. decided to put into operation the recommended programs.

To improve mineral possibilities, Bravo optioned several blocks of ground adjoining the two Crown-grants - the Knight Rambler and the Kettle.

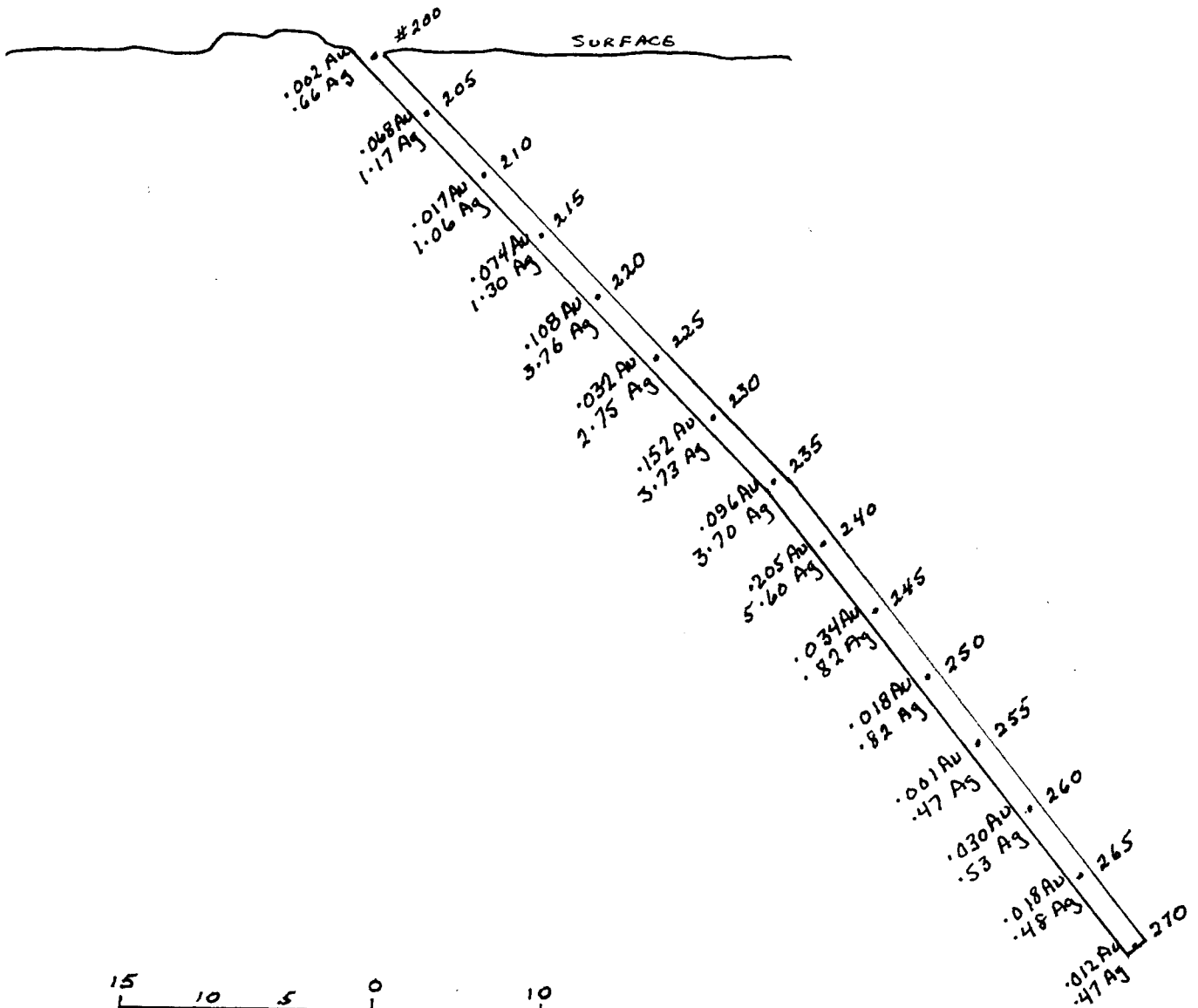
From May 5th to May 22nd, 1987 a program involving a geochemical soil collection was conducted over the two Crown grants and the optioned properties. Results are discussed in a report by the writer dated July 10, 1987. Contractor for the project was International Field Services Inc. of Vancouver.

As a follow-up to the 1987 program, trenching and pitting over selected areas of the claims was carried out in 1988. From August 23rd to September 1st, 1988, a total of 26 pits was put down within the claims with rock chips samples being taken at the bottom of the trenches where bedrock was reached. In addition the Fontenoy shaft was dewatered to its 70 foot depth and the shaft sidewalls were sampled at 5 foot intervals.

Results of this program are detailed in a report by the writer dated February 9, 1989. The shaft sampling exposed some 40 feet of vein material which averaged 0.088 ounces gold across a 3.8 foot width. The silver in this portion of the vein ran 4.42 ounces silver per ton over the same vein width. The vein passed into the hanging wall of the shaft with a parallel structure appearing but containing no, or relatively little, precious metal values. A closeby trench to the Shaft had a sample that although weak in gold values carries 33.83 ounces of silver per ton across a 3 foot width. This vein in the trench is thought to be the surface exposure of the shaft vein due to its being strong in silver and relatively low in gold. The work was supervised and contracted to International Field Service Inc. The optioned claims were dropped shortly after the finish of the program.

Recommendations emanating from the report suggested a limited diamond drill program in the immediate vicinity of the shaft. This program was organized in June 1989.

N63°E



15 10 5 0 10
SCALE 1" = 10'

BRAVO RESOURCES INC.

CAMP MCKINNEY CLAIMS

GREENWOOD M.D., B.C.

NTS: 82 E/3

SHAFT SAMPLING

FIG. 4

DIAMOND DRILL PROGRAM

Bravo decided to go with a limited diamond drill program confined to the immediate surroundings of the shaft. Intent of the operation was to test the continuity of the shaft vein over a 60 meter (200 feet) strike length at shallow depths. Six holes were laid out forming three drill sections with a seventh hole, off section, being added at the end of the program.

Results of this program are depicted pictorially on figures 5 through 8 and descriptively on the individual diamond drill holes.

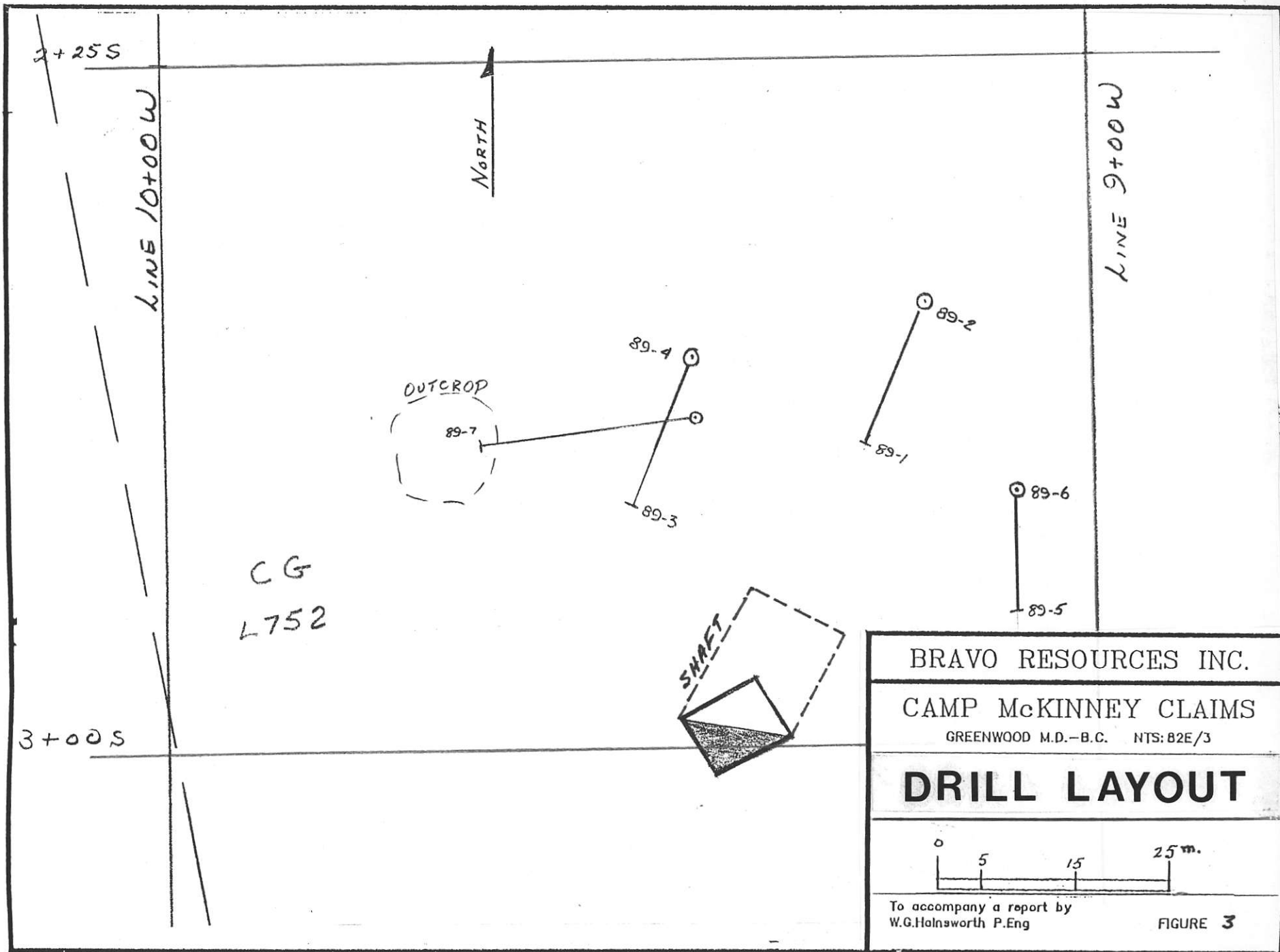
The drilling was contracted to LeClerc Drilling Ltd. of Beaverdale, B.C. who supplied a Longyear Super 38 machine. Drilling a single ten hour shift per day the contractor finished the seven holes within an eight day period. The seven NQ holes totalled 1,000 feet. There was no project geologist, the program being guided by directors of Bravo Resources.

The formations encountered were argillites varying from highly carbonaceous to highly silicified; greenstone, a formation well metamorphosed from its original constituents and now highly impregnated locally with argillaceous interbeds; and a dyke rock. Correlation between the various formations was difficult in the drill sections because of the interbedding.

The bulk of the mineralization was made up of pyrite. Minor amounts of galena and sphalerite were observed. The mode of emplacement varied from disseminated throughout local argillitic sections to more massive sulphide appearances. Silicification in the form of quartz veins varied in width and mineral content. However seldom were the veins greater than 4 to 5 feet although they could be in small swarms. The presence of galena, in the Mount McKinney area, is generally indicative of good precious metal values. In the Bravo instance this was confined more to silver values than gold contents.

The highest recorded gold assay in the program was a one foot section from hole 89-6. This assayed 0.144 ounces per ton gold at a vertical depth of 118 feet.

What has been surprising is the silver values coming from the sections. Where the core was assayed for the base metal components it showed that the silver - lead ratio is roughly 1:1. The zinc content varied in percentage but was normally present where galena was apparent. In the 15 samples assayed for lead and zinc (holes 89-4, 89-6 and 89-7) the mean average value for silver was 1.43 oz. per ton while the mean average value of the lead (galena) content was 1.45%. The zinc value was 2.24%. These figures were averaged out across a mean intercept width of



3.07 feet.

Holes 89-1 and 89-2 drilled under the inclined shaft came up with surprisingly weak results. The next set of holes to the west, 89-3 and 89-4, intercepted the same mineralized argillite horizon early in the hole (within the first 50 feet) with the inclined hole (89-3) running 0.025 ounces gold per ton and 1.980 ounces silver per ton over 12.5 feet. The vertical hole (89-4) on the same section assayed 0.024 ounces gold per ton and 2.015 ounces silver per ton over 20 feet.

In the eastern set of holes the inclined hole (89-5) intercepted weak to nil mineralization while in hole 89-6, as mentioned earlier, the best gold section was cut (0.144 across 1 foot.) Hole 89-7 angled to cut diagonally across the mineralized zone intersected 16 feet which averaged 0.020 ounces gold per ton and 1.124 ounces silver per ton.

The drill intercepts are:

<u>Hole No.</u>	<u>From</u>	<u>To</u>	<u>Width</u>	<u>Au</u>	<u>Ag</u>
89-1	85.0	97.5	12.5	0.006	0.379
89-2	No mineralized intercepts.				
89-3	37.0	49.5	12.5	0.025	1.980
89-4	32.0	52.0	20.0	0.024	2.015
89-5	No mineralized intercepts.				
89-6	117.0	120.0	3.0	0.057	1.150
89-7	30.0	46.0	16.0	0.020	1.124

COST FIGURES

The three programs carried out by Bravo on its Mount McKinney property totalled \$66,632. The initial program cost \$17,751 while the follow-up trenching and dewatering phase cost \$21,138. The Diamond drill operation cost \$27,743, broken down as follows:

Diamond Drilling	-	\$21,000
Sampling	-	214
Transportation	-	220
Lodgings & Food	-	1,731
Report	-	2,636
Misc.	-	<u>2,042</u>
		\$27,743

RECOMMENDATIONS

It is the writers opinion that Bravo has technically and thoroughly examined their two Crown grants and the claims (optioned) immediately surrounding their own claims. The optioned claims showed no values of any consequence from the soil sampling or the trench sampling.

The sampling of the inclined Fontenoy shaft shows the reason for its not going deeper or laterally - a lack of ore. What values the shaft did expose lay in silver, not gold and these values were sub-economic. The drilling, clustered around the shaft, bore out the lack of auriferous values and again testified to a silver imbalance.

The writer recommends that Bravo do no further work on their two Crown grants in the Mount McKinney area. The claims should be maintained in good standing with their annual fees and a standing watch should be maintained on the McKinney gold area.

Respectfully submitted,

W.G. Hainsworth, P.Eng.

CERTIFICATE

I, W.G. Hainsworth, P. Eng., of Vancouver, British Columbia do hereby certify:

- (1) That I am a Consulting Geologist residing at 836 West 13th Ave., Vancouver, British Columbia.
- (2) That I am a graduate of the University of Western Ontario, London, Ontario, Bachelor of Science Degree, Honours Geology.
- (3) That I have practiced my profession for some 35 years.
- (4) That I have been a continuous member of the Association of Professional Engineers of British Columbia since 1965 and am a Professional Geologist registered with the Association of Professional Engineers, Geologists and Geophysicists of Alberta since 1979.
- (5) That I have no financial interest, direct or indirect, in Bravo Resources Inc. and do not expect to obtain any such interest.
- (6) That the information contained in this report is based on personal visits to the McKinney property of Bravo Resources Inc., and familiarly with the operations, past and present.
- (7) The consent is herewith given to Bravo Resources Inc. to use any or all material from this report in information circular, offerings or shareholders brochures.

W.G. Hainsworth, P.Eng. (B.C.)
P.Geol. (Alb.)

BIBLIOGRAPHIES

- Hainsworth, W.G. - Report on the Camp McKinney
Camp Holdings April 6, 1987
- Assessment Report on the Phase I Operation
July 10, 1987
 - Report on the Phase 1A Operation
February 9, 1989

SHAFT

N23°E

2.002; .01
2.002; .01

2.002; .02

.006; .52
.060; 1.78
.004; .29
59.000

.034; 1.84

.008; 1.60

.038; 4.08

.014; .54

89-3

89-4

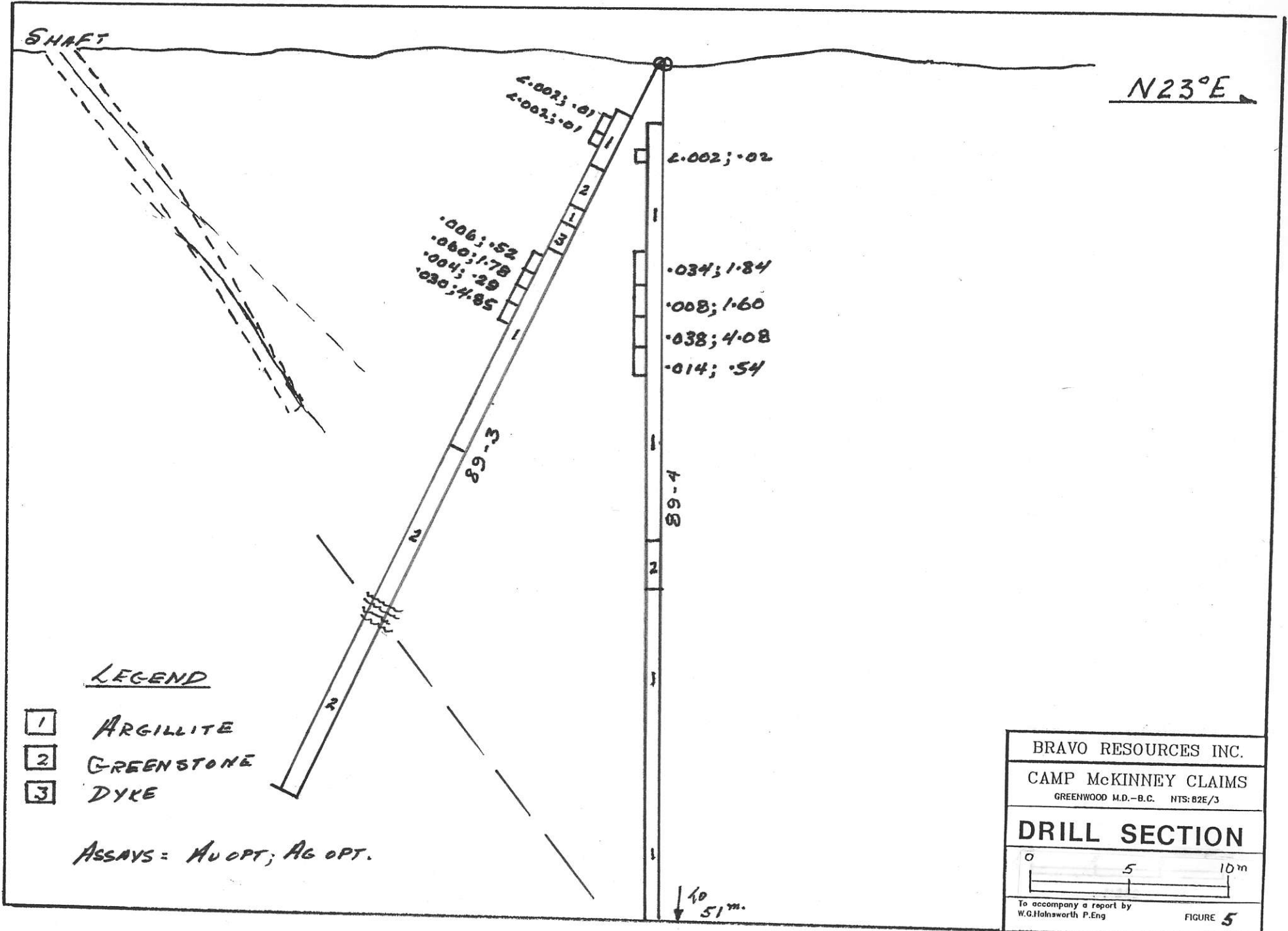
LEGEND

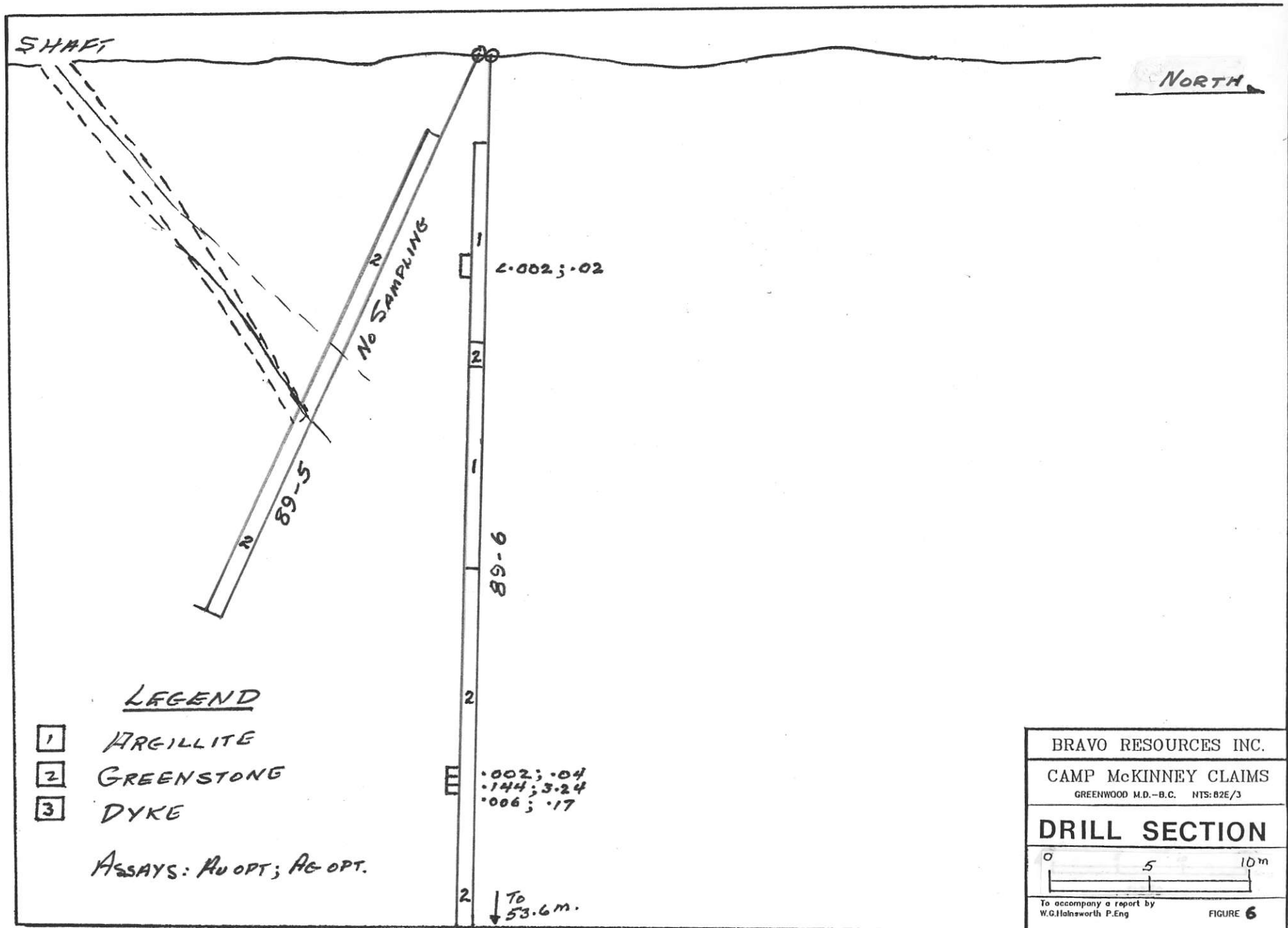
- 1 ARGILLITE
- 2 GREENSTONE
- 3 DYKE

ASSAYS = Au OPT; Ag OPT.

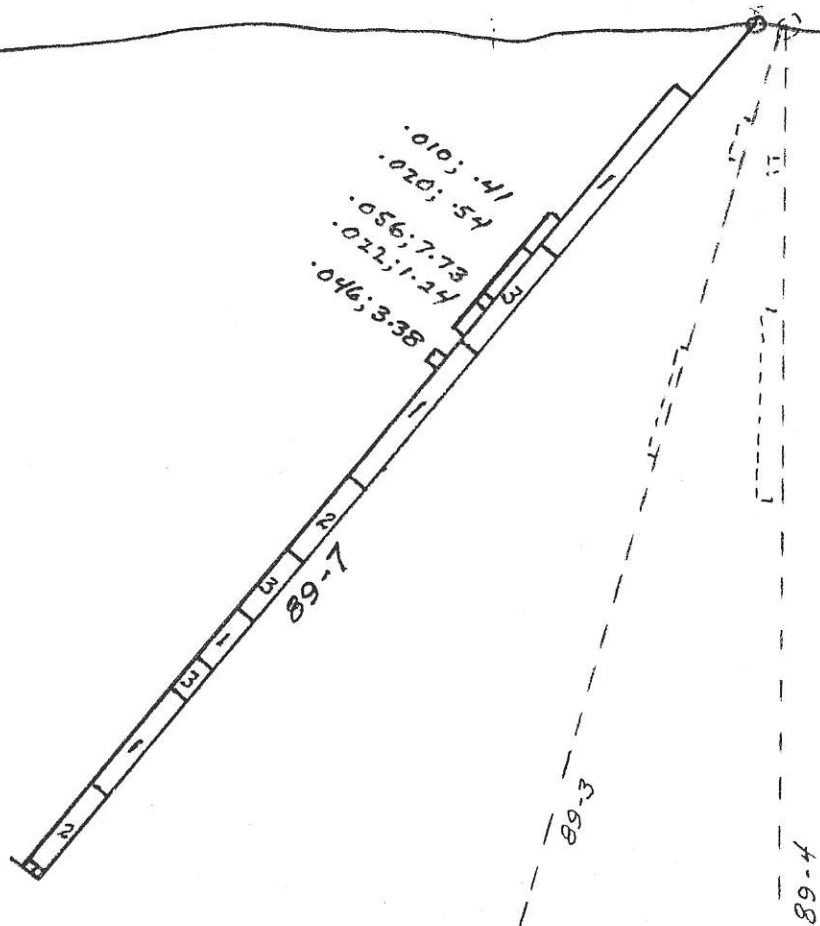
BRAVO RESOURCES INC.
CAMP MCKINNEY CLAIMS
GREENWOOD M.D.-B.C. NTS: 02E/3
DRILL SECTION
0 5 10m
To accompany a report by W.G. Hainsworth P.Eng
FIGURE 5

10
51m.





N83°E



LEGEND

- 1 ARGILLITE
- 2 GREENSTONE
- 3 DYKE

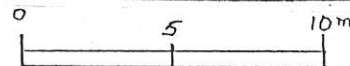
ASSAYS = AU OPT; AG OPT.

BRAVO RESOURCES INC.

CAMP MCKINNEY CLAIMS

GREENWOOD M.D.-B.C. NTS: B2E/3

DRILL SECTION



To accompany a report by
W.G. Holsworth P.Eng

FIGURE 7



Chemex Labs Ltd.

Analytical Chemists * Geochemists * Registered Assayers
212 BROOKSBANK AVE., NORTH VANCOUVER,
BRITISH COLUMBIA, CANADA V7J-2C1
PHONE (604) 984-0221

To: BRAVO RESOURCES INC.

930 - 470 GRANVILLE ST.
VANCOUVER, BC
V6C 1V5

Project:
Comments:

* Page No. : 1
Tot. Pages: 1
Date : 17-JUL-89
Invoice # : I-8919890
P.O. # : NONE

CERTIFICATE OF ANALYSIS A8919890

SAMPLE DESCRIPTION	PREP CODE	Au oz/T	Ag oz/T	Pb %	Zn %															
113	208	--	< 0.002	0.02	0.01	0.01														
114	208	--	0.034	1.84	1.60	4.43														
115	208	--	0.008	1.60	1.72	2.54														
116	208	--	0.038	4.08	4.68	4.00														
117	208	--	0.014	0.54	0.41	1.18														
118	208	--	0.008	0.12	0.07	2.61														
119	208	--	< 0.002	0.02	0.02	0.02														
120	208	--	0.002	0.04	0.01	0.02														
121	208	--	0.144	3.24	1.93	3.15														
122	208	--	0.006	0.17	0.08	0.06														
123	208	--	0.010	0.41	0.38	1.00														
124	208	--	0.020	0.54	0.65	0.67														
125	208	--	0.056	7.73	8.99	8.86														
126	208	--	0.022	1.24	1.15	2.40														
127	208	--	0.046	3.38	2.96	6.10														

CERTIFICATION :

Shnell



Chemex Labs Ltd.

Analytical Chemists * Geochemists * Registered Assayers

112 BROOKSBANK AVE NORTH VANCOUVER
BRITISH COLUMBIA CANADA V7E 2C1

PHONE (604) 284-0221

To BRAVO RESOURCES INC.

930 - 470 GRANVILLE ST
VANCOUVER BC
V6C 1V5

Project

Comments: ATTN: GEORGE HAJDUK CC: W G HAINSWORTH

* Page No. 1
Tot Pages 1
Date 22-JUN-89
Invoice # I-8917974
P O # NONE

CERTIFICATE OF ANALYSIS A8917974

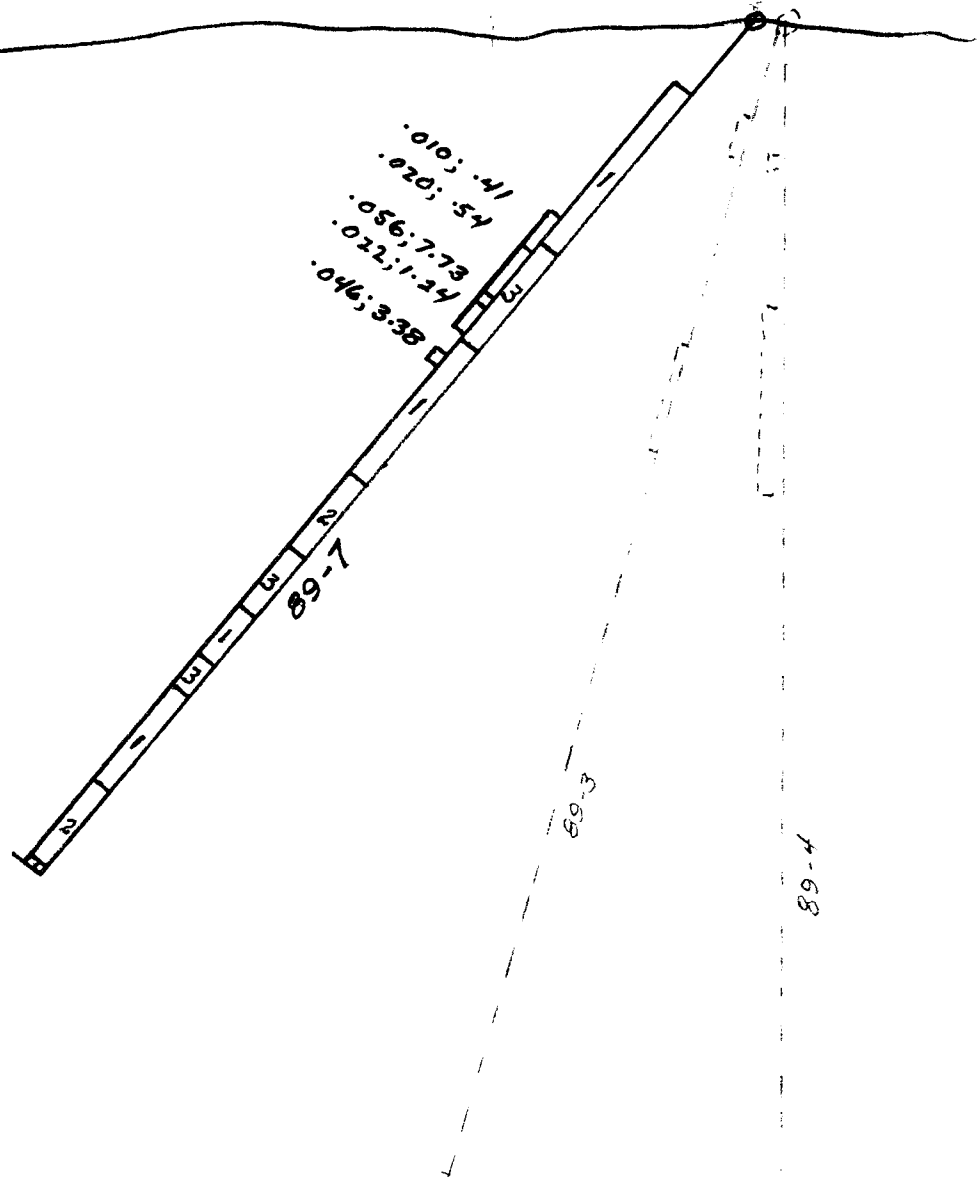
1000 FT DRILL PROGRAM

SAMPLE DESCRIPTION	PREP CODE	Au oz/T	Ag oz/T
100	208 ---	< 0.002	< 0.01
101	208 ---	< 0.002	< 0.01
102	208 ---	0.018	0.96
103	208 ---	0.002	0.09
104	208 ---	< 0.002	0.03
105	208 ---	0.010	0.17
106	208 ---	<<< 0.002	0.04
107	208 ---	<<< 0.002	0.01
108	208 ---	<<< 0.002	0.01
109	208 ---	0.006	0.52
110	208 ---	0.060	1.78
111	208 ---	0.004	0.29
112	208 ---	0.030	1.64

< = less than

W. Ben Ammin

N83°E

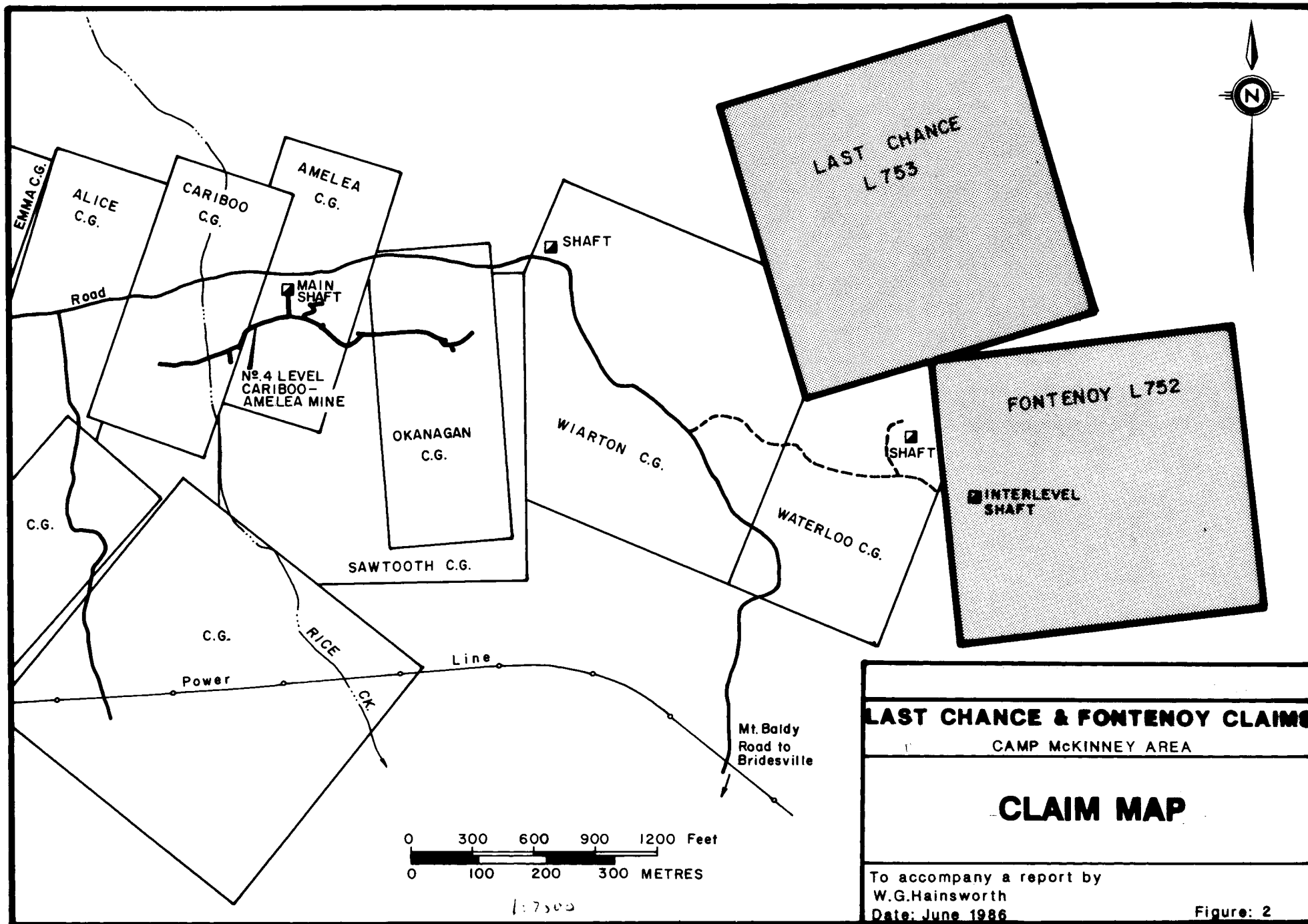


LEGEND

- 1 ARGILLITE
- 2 GREENSTONE
- 3 DYKE

ASSAYS = AU OPT; AG OPT.

BRAVO RESOURCES INC.	
CAMP MCKINNEY CLAIMS	
GREENWOOD M.D.-B.C. NTS: B2E/3	
DRILL SECTION	
0 5 10m	
To accompany a report by W.G. Hainworth P.Eng	
FIGURE 7	



LAST CHANCE & FONTENOY CLAIMS

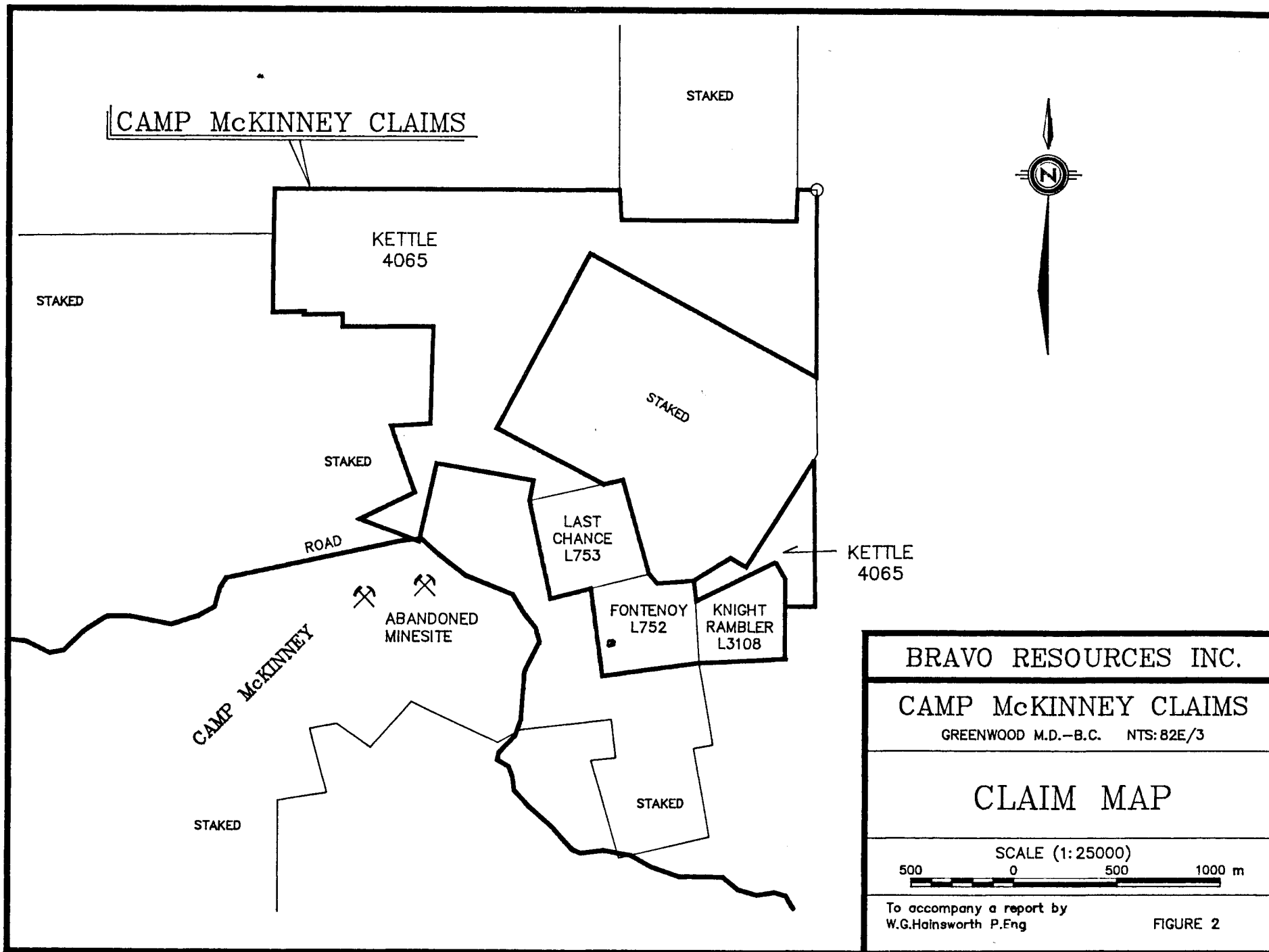
CAMP MCKINNEY AREA

CLAIM MAP

To accompany a report by
 W.G. Hainsworth
 Date: June 1986

Figure: 2

1:7500



BRAVO RESOURCES INC.	
CAMP MCKINNEY CLAIMS	
GREENWOOD M.D.-B.C. NTS: 82E/3	
CLAIM MAP	
SCALE (1:25000)	
500 0 500 1000 m	
To accompany a report by W.G.Hainsworth P.Eng	
FIGURE 2	