

800453

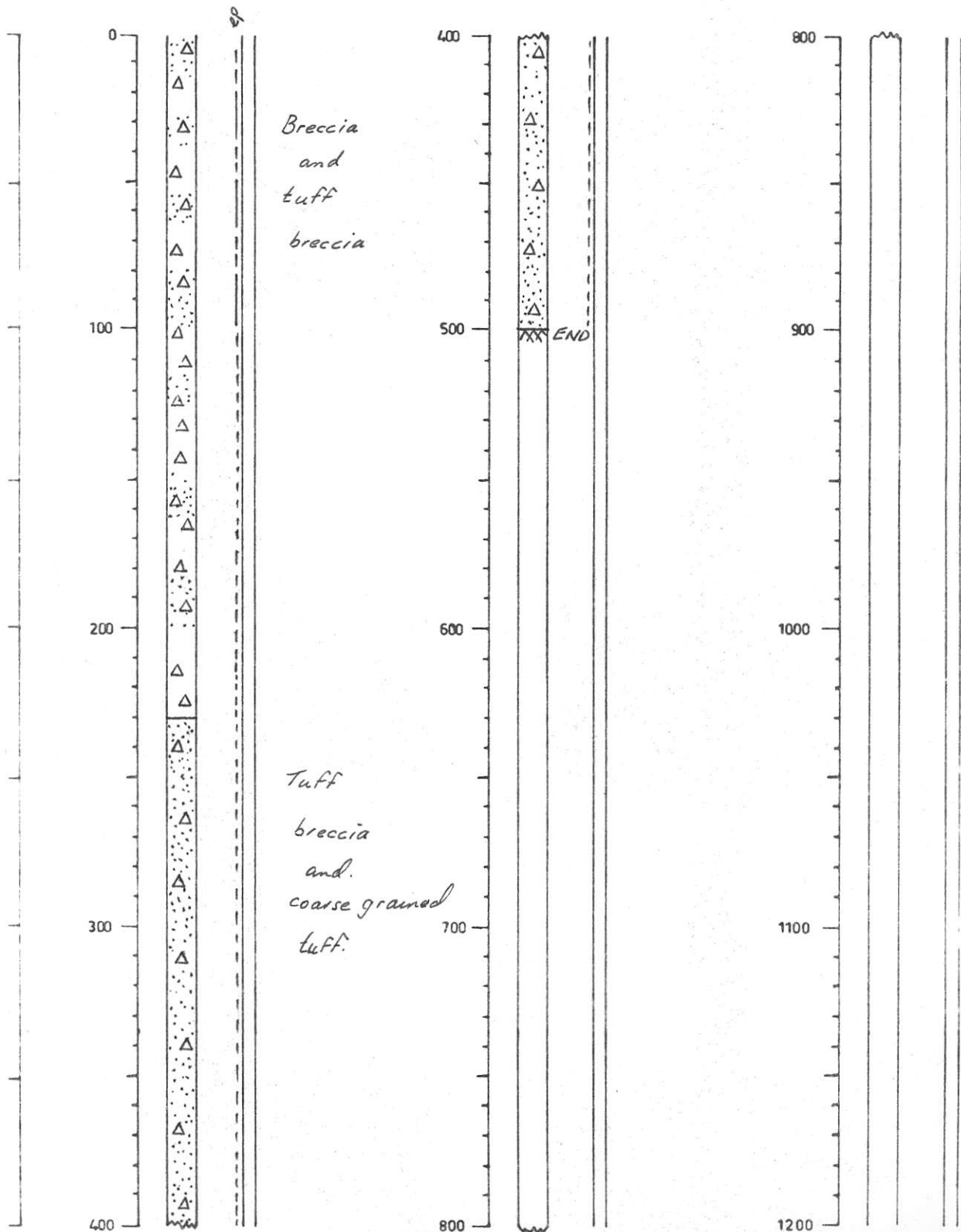
AXE PROPERTY

WEST ZONE
HOLE No. 69-5

DDH ✓
PH
RH
SIZE BQ

ELEVATION
COORDINATES
BEARING
DIP
SCALE

4,650'
49,750' N 20,570' E
—
-90°
1" = 50'



AXE PROPERTY

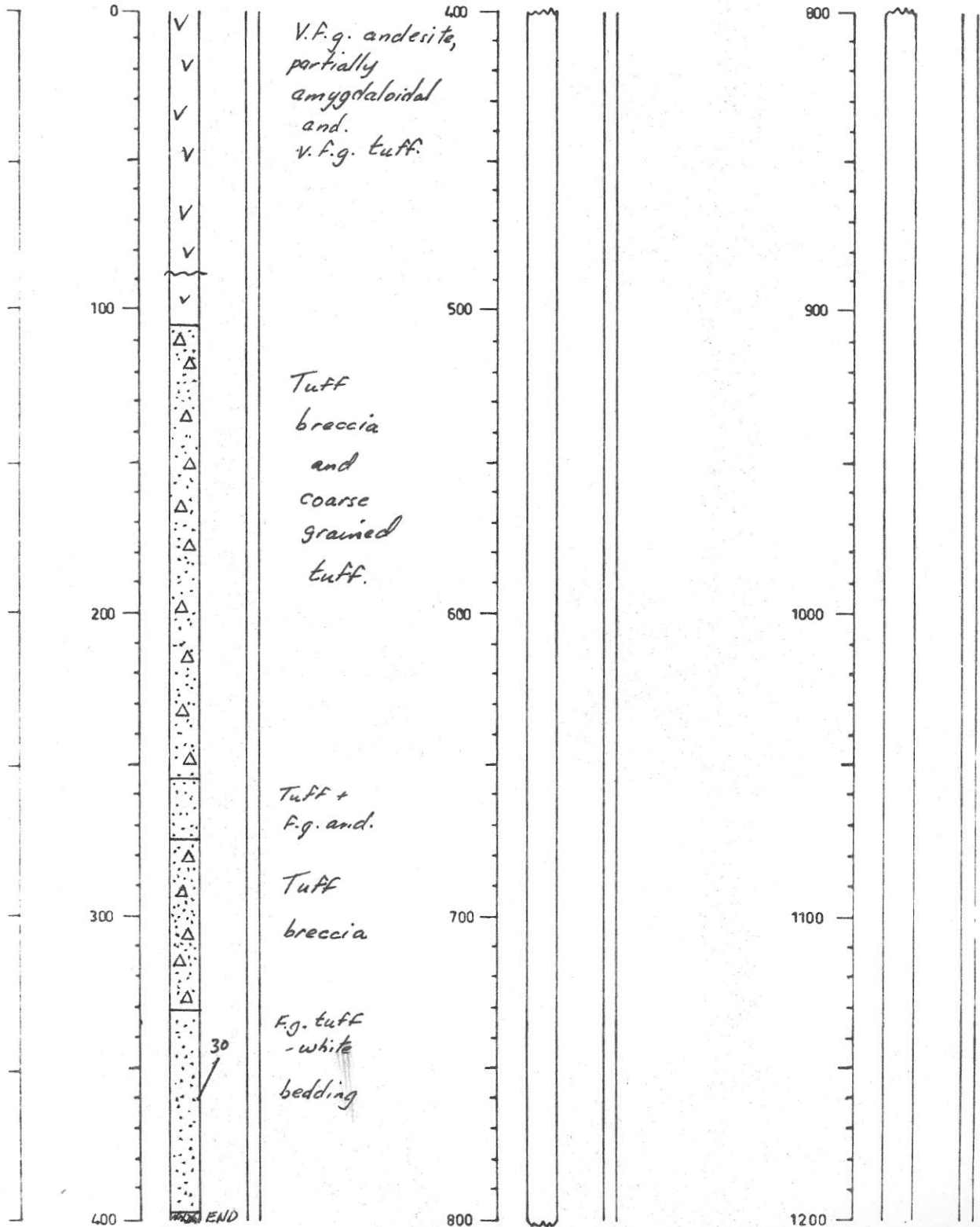
WEST ZONE
HOLE No. 69-4

DDHV
PH
RH
SIZE BQ

FOOTAGES ARE
APPROXIMATE - CORE WAS
BADLY SHAKEN IN
TRANSIT FROM PROPERTY.

ELEVATION
COORDINATES
BEARING
DIP
SCALE

4,640'
50,250'N 20,740'E
—
-90°
1" = 50'



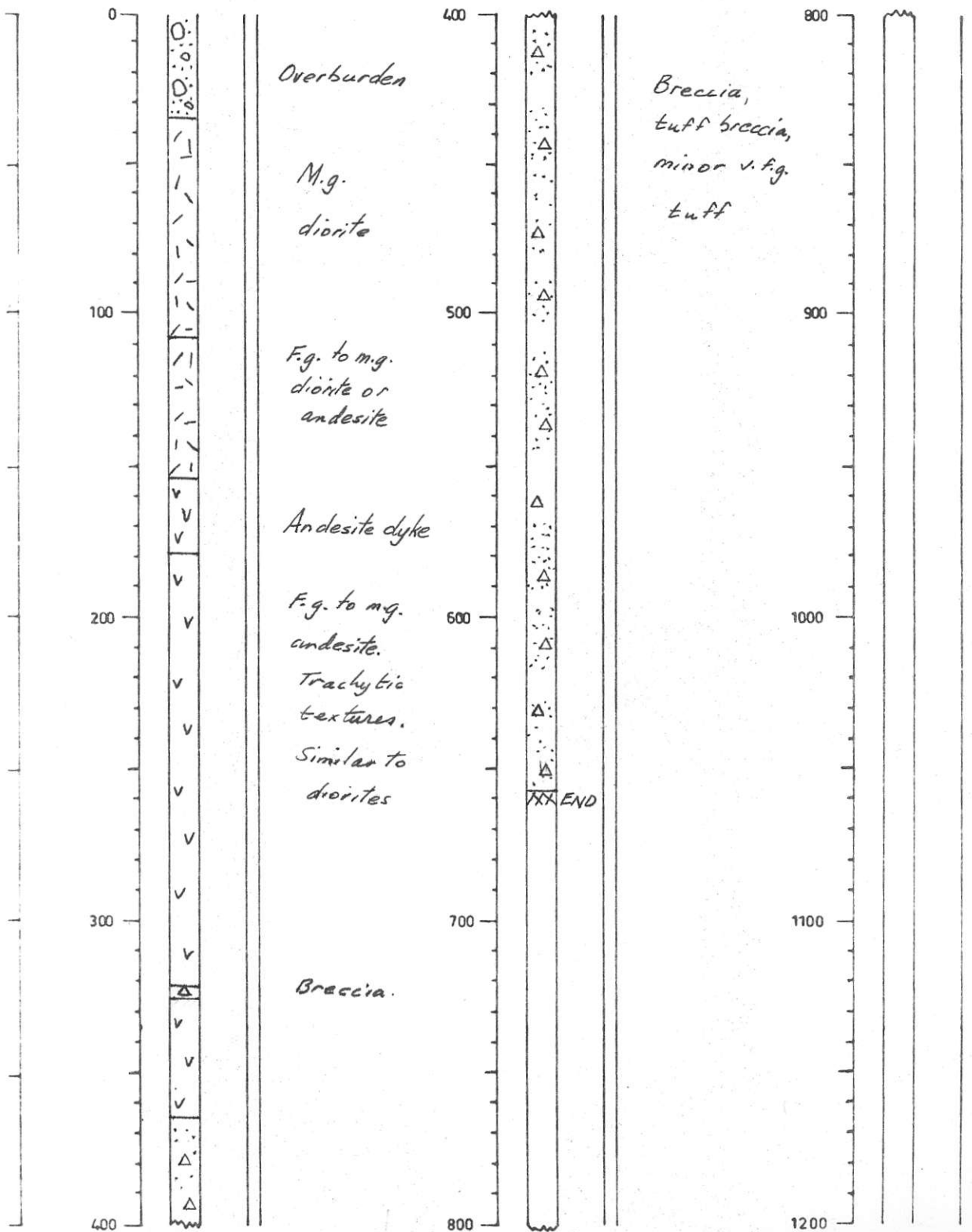
AXE PROPERTY

WEST ZONE
HOLE No. 69-7

DDH ✓
PH
RH
SIZE BQ

ELEVATION
COORDINATES
BEARING
DIP
SCALE

4,580'
48,400'N 20,250'W
010°
-45°
1" = 50'



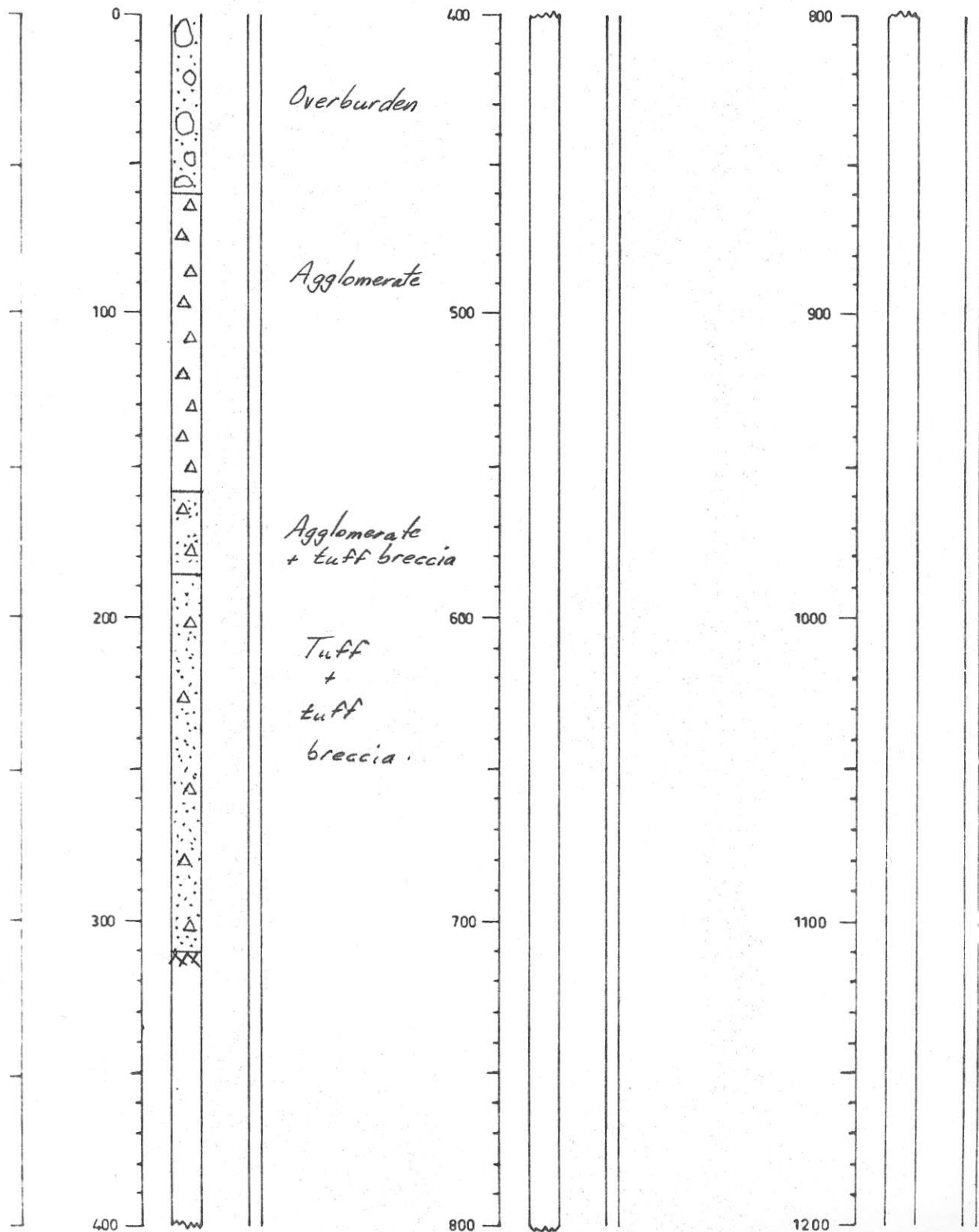
AXE PROPERTY

WEST ZONE
HOLE No. 72-7

DDH ✓
PH
RH
SIZE NQ

ELEVATION
COORDINATES
BEARING
DIP
SCALE

4,560'
48,980'N 20,100'E
090°
-45°
1" = 50'



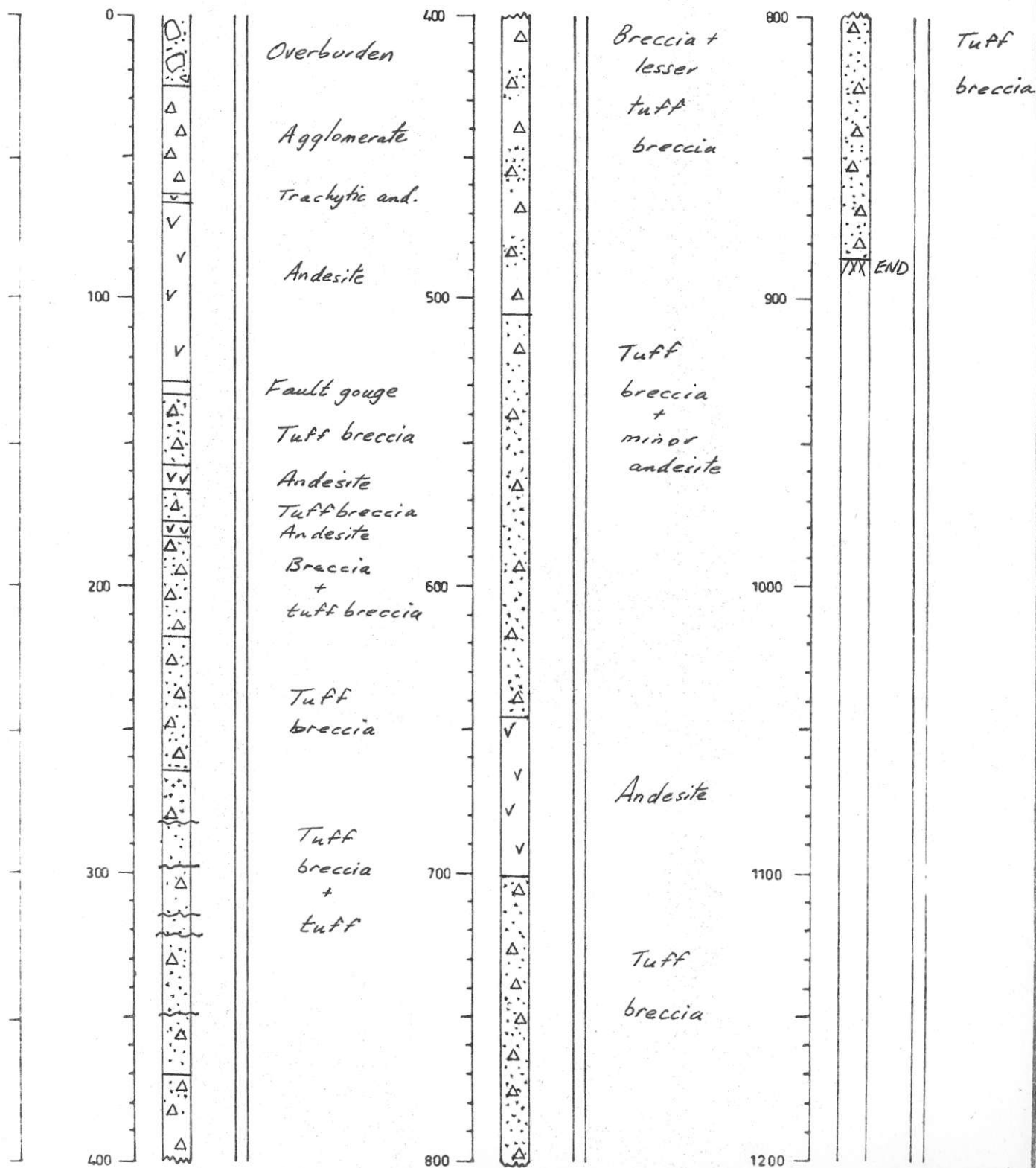
AXE PROPERTY

WEST ZONE
HOLE No. 72-5

DDH ✓
PH
RH
SIZE NQ

ELEVATION
COORDINATES
BEARING
DIP
SCALE

4,590'
49,190'N 20,200'E
090°
-45°
1" = 50'



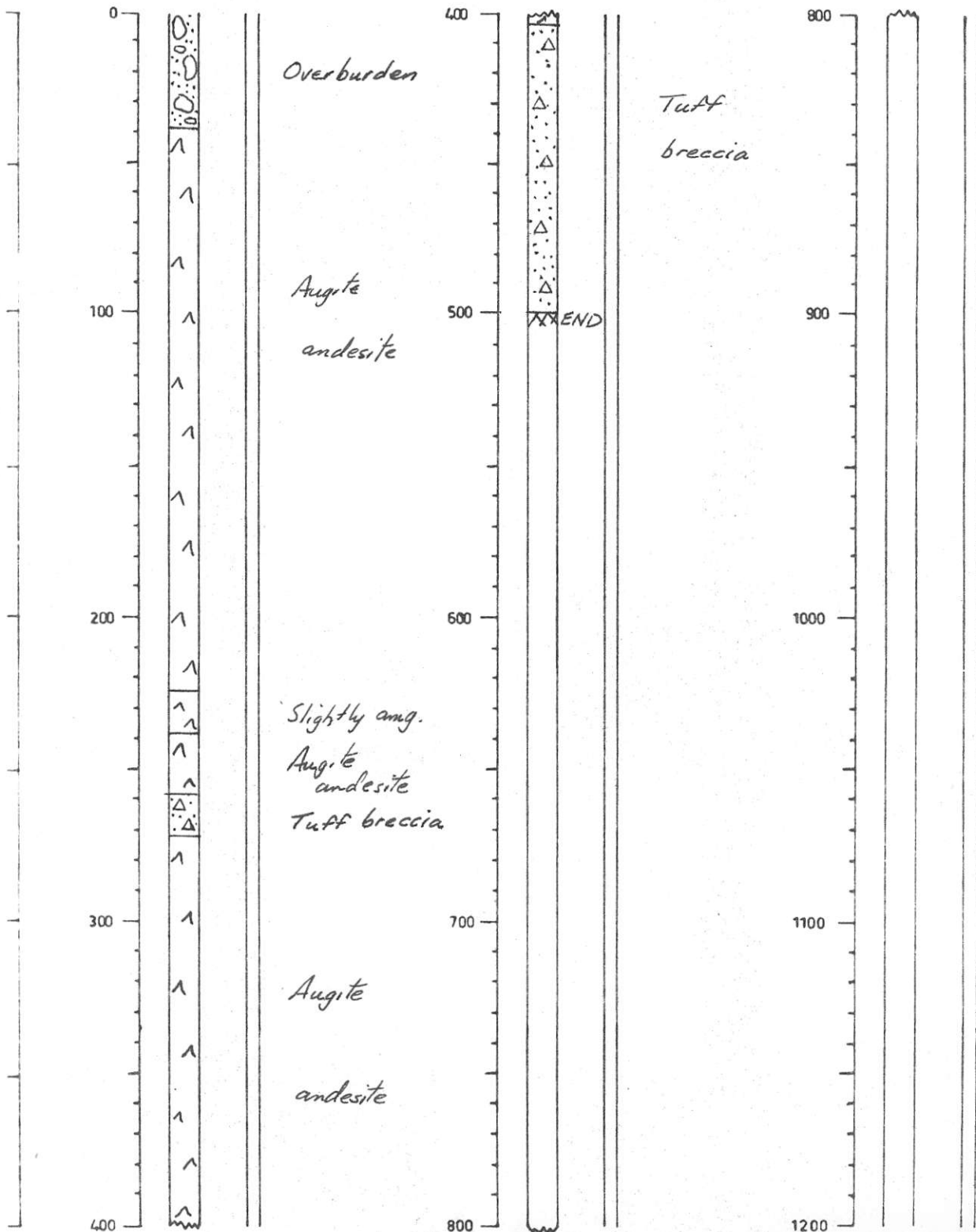
AXE PROPERTY

WEST ZONE
HOLE No. 69-B

DDH ✓
PH
RH
SIZE BQ

ELEVATION
COORDINATES
BEARING
DIP
SCALE

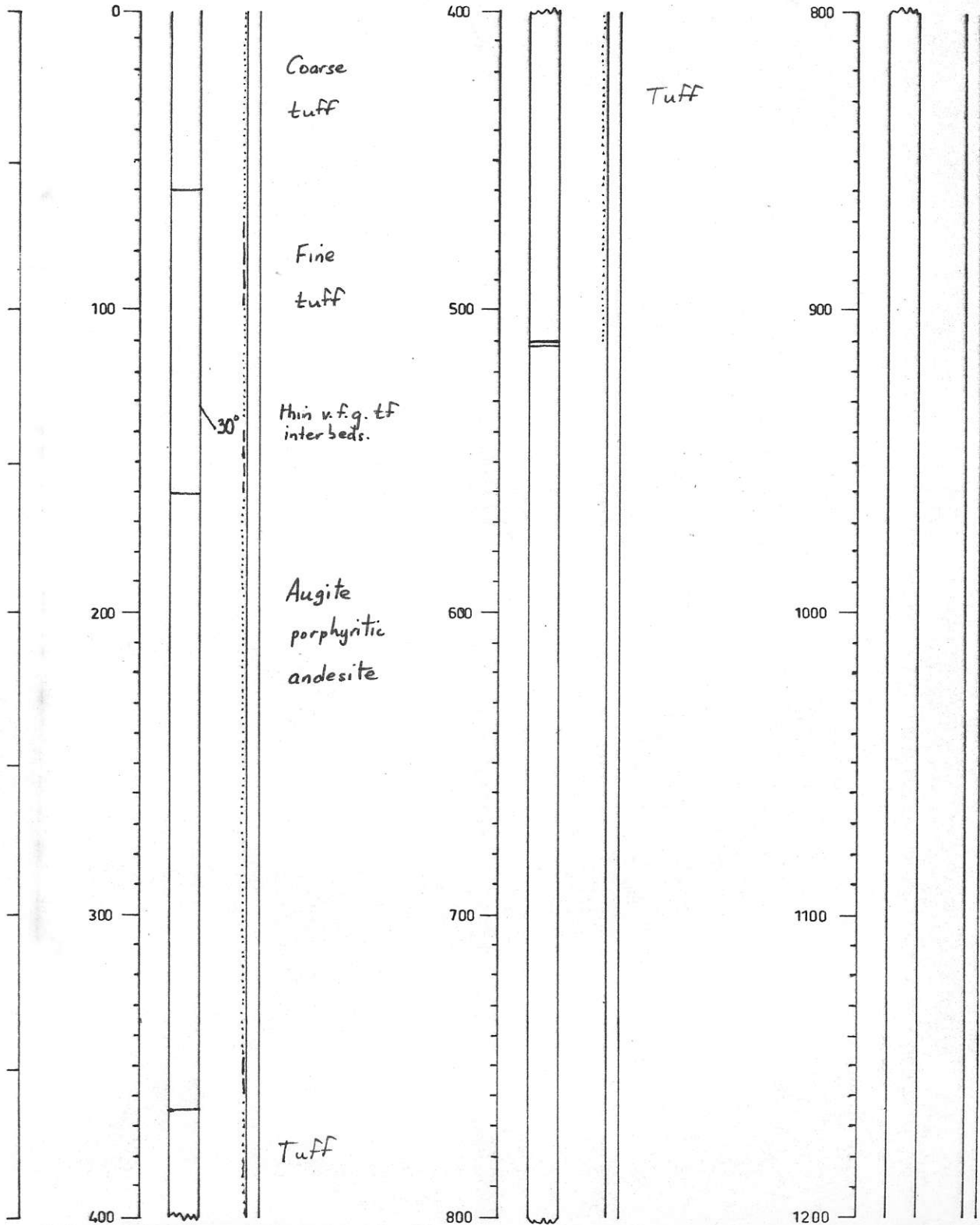
4,580
48,400'N 20,250'E
—
-90°
1" = 50'



HOLE No. 69-6

DDH
PH
RH

ALTITUDE : 4,650'
COORDINATES : 49,430'N 20,700'E
BEARING : 250°
ANGLE : -45°
SCALE : 1" = 50'



AXE PROPERTY.

WEST ZONE
HOLE No. 69-6

DDH ✓
PH
RH
SIZE B9

ELEVATION
COORDINATES
BEARING
DIP
SCALE

4,650'
49,430'N 20,700'E
250°
-45°
1" = 50'

