

SOUTH ZONE HOLES.

ADONIS

3800 - 0370
570

800388

MAIN (from South to North)

		Elev.	Depth	Azi	CHLOR	TOE.
72-8 (45°)	✓	3890	418	240°	1022 S	1002 S
PA 43	✓	4100	200	-	742 S	
PA 4	✓	4240	340	-	573 S	
M 3	✓	4250	(0-50) 223	-	465 S	
M 7	✓	4300	(0-25) 328	-	218 S	
69-2 (45°)	✓	4200	(0-13) 810	270	345 S	13 N
PA 38	✓	4300	180	-	100 S	
M 2	✓	4300	427	-	85 S	
PA 24	✓	4300	350	-	108 N	
PA 2	✓	4300	340	-	144 N	
M 4	✓	4200	(0-20) 352	-	20 N	
72-14 (45°)	✓	4330	(0-17) 704	270°	265 N	581 N
72-12 (45°)	✓	4330	(0-12) 562	270°	388 N	642 N
A 1	✓	4300	(0-8) 449	-	515 N	
PA 1	✓	4300	270	-	482 N	
M 1 (60°)	✓	4300	442 (0-45)	60°	488 N	460 N
72-13 (45°)	✓	4350	587 (0-16) (0-40)	270°	600 N	870 N
69-3 (45°)	✓	4300	500 (0-15)	270°	728 N	950 N
A 3 (45°)	✓	4300	449 (0-38)	270°	940 N	1148 N
72-16 (45°)	✓	4370	500	270°	815 N	1038 N

Auxiliary

PA 6A	✓	3750	200	-	770 S	
71-9 (45°)	✓	4100	(0-15) 560	270°	70 N	318 N
R 4	✓	?	723	-	900 N	
69-1 (45°)	✓	4300	(0-28) 997	270°	778 N	1232 N
PA 13	✓	4300	350	-	1224 N	
PA 14	✓	4300	350	-	1575 N	
72-4 (45°)	✓	4070	1343 (0-8)	226°	1338 N	1230 N

72-8 0-30 .27 ✓ 0/21 ✓ 30

170-200 .20 120/141 }
240-260 .315 141/184 } 170-260 .27 ✓

PA 43 nothing (.03/175')

PA 4 40-140 .35 ✓ ✓ 100

M 3 (.08/225')

M 7 200-320 .28 ✓ ✓ 120

69-2 330-370 .28 233/262 ✓

41-280
40-220
39-155 } 370-440 .20 262/311 ✓

440-620 .36 1438 ✓

620-680 .20 1481

680-770 .27 1544

330-770 .29 ✓ 290

PA 38 10-180 .40 ✓ ✓ 170

M 2 0-40 .20 } 0-150 .38 ✓ ✓ 150

40-150 .45 } 230-240 .26 ✓ ✓ 60

330-350 .28 ✓ ✓ 20

PA 24 0-270 .29 ✓ ✓ 270

PA 2 170-180 .21 ✓ ✓ 10

230-240 .26 } 230-260 .23 ✓ ✓ 30

240-260 .21 } 320-340 .22 ✓ ✓ 20

M 4 180-200 .20 } 180-320 .29 ✓ ✓ 140

200-320 .30 } 72-14 30-100 .28 21/21

100-180 .20 21/127 } 30-270 .25 ✓ ✓ 240

180-270 .27 127/191 } 370-410 .25 242/290

440-480 .28 311/339 } 510-530 .44 360/375

510-530 .44 360/375 } 370-620 .21 ✓ ✓ 250

557.70

72-14 570-590 .33 403/417
 42-348
 41-410
 40-475
 39-535
 610-620 .29 431/438 ✓
 680-690 .47 ✓ 481/487 ✓

10

72-12 210-300 .38 148/212
 42-470
 41-535
 40-600
 320-360 .34 226/255
 420-430 .26 297/304
 40-360 .33
 210-430 .27 ✓ 220

A 1 8-50 .20
 50-340 .42
 400-449 .27
 8-449 .35 ✓ ✓
 441

PA 1 0-20 .27
 60-70 .23
 100-230 .35
 0-230 .27 ✓ ✓
 230

m 1 45-120 .20 ✓ 39/104 ✓
 75

72-13 50-120 .34 ✓ 35/92
 42-700
 41-763
 40-825
 240-410 .29 170/280
 460-500 .30 325/354
 240-500 .26
 50-500 .24 ✓ ✓
 450

69-3 30-40 .25 21/28
 42-798
 41-853
 40-915
 50-70 .32 35/49
 100-330 .36 71/233
 490-500 .28 ✓ 346/354
 30-330 .32 ✓ ✓
 300

A 3 15-30 .20 11/21
 42-1004
 41-1070
 30-260 .37 21/184
 15-260 .36 ✓ ✓
 245

72-16 38-50 .30 27/35
 42-920
 41-980
 40-
 39-
 160-210 .29 113/148
 260-270 .27 184/191
 290-370 .37 205/262
 370-420 .20 262/297
 420-480 .46 297/339
 38-370 .23
 38-480 .26 ✓ ✓
 402

PA 6A

71-9 ⁴⁰⁻¹³³
39-195

R 4

0-20 .36 ✓

140-150 .25 ✓

49-563 .21 ✓ 35/398 ✓

514

20-70 .25

90-140 .32

140-200 .28

200-290 .22

20-290 .25 ✓ ✓

270

480-490 .45

490-530 .32

480-530 .35 ✓

69-1

47-835
40-897

40-955
PA 13

220-250 .28

300-310 .25

220-310 .25 ✓ ✓ 56/198 90

22/219

40-130 .27 ✓

180-190 .31 ✓

40-190 .23 ✓

150

PA 14

40-50 .22 ✓

260-280 .28 ✓

72-4

8-120 .61

230-320 .29

8-320 .36 ✓ 6/85
162/224

1050-1110 .28

1190-1210 .26

1050-1210 .22 742/785
841/855

of intervals = 28
of holes = 28

5297

1482.41

2798

Plan @

4200' catches : A3; 72-16; 69-3; 72-13; A1; PA1;
 M1; 72-14; PA24; M2; PA38; PA4.
 misses : 72-12; PA2; M7; M3.
 not involved; M4; 69-2; PA43; 72-8

Plan @

4100' catches : 72-16; 69-3; 72-13; A1; 72-12; PA1;
 PA24; M7; PA4
 misses : A3; M1; 72-14; PA2; M4; M2;
 69-2; M3; PA43
 not involved : PA38; PA43; 72-8

Plan @

4000' catches : 72-13; A1; 72-14; M4; M7;
 misses : A3; 69-3; 72-12; M1; PA2; PA24;
 M2; 69-2; PA4; PA43.
 not involved; 72-16; PA1; PA38; M3; 72-8.

Plan @

3900' catches : A1; 72-14; M4; 69-2; 72-8

misses : M2; PA4; PA43.

not involved; A3; 72-16; 69-3; 72-13; 72-12;
 PA1; M1; PA2; PA24;
 PA38; M7; M3;

West Zone HOLES

From South to North.

	Elev.	Depth	Azi	Collar	Toe.
72-9 (-45°) ✓	4580	288'	90°	415 830 S	715 S
PA 37 ✓	4590	150	-	375 750 S	
PA 34 ✓	4600	230	-	280 560 S	
69-8 (90°) ✓	4580	500'	-	435 870 S	
69-7 (-45°) ✓	4580	657'	10°	435 870 S	467 S
72-7 (-45°) ✓	4560	306'	90°	240 480 S	310 S
72-5 (-45°) ✓	4590	884'	90°	102 244 S	95 N
PA 32 ✓	4600	330'	-	180 S	
PA 31 ✓	4600	240	-	60 S	
69-6 (-45°) ✓	4650	570'	250°	235 N	112 ^{50 S} N
72-6 (-45°) ✓	4620	502'	90°	82 S	112 N
PA 45 ✓	4650	350'	-	323 N	
PA 30 ✓	4600	330'	-	105 N	
PA 39 ✓	4650	150	-	400 N	
69-5 (-90°) ✓	4650	500	-	394 N	
PA 29 ✓	4600	210	-	382 N	
P 15 ✓	4650	250	-	675 N	
PA 28 ✓	4600	350	-	730 N	
PA 27 ✓	4690	310	-	812 N	
69-4 (-90°) ✓	4640	398'	-	868 N	
PA-40	4640	350	-	192 N	

72-9 60 70-130 .29 49/92 ✓✓
 18 270-288 .36, 191/204 ✓✓

PA 28 ⁵⁰ 60-110 .40 ✓
 PA 27 —
 P15 0-10 .42

PA 37 40 110-150 .22 ✓✓

69-4 —
 PA 40 —

PA 34 140 90-230 .31 ✓✓

69-8 10 290-350 .34 ✓✓
~~440-450 .29 ✓~~

72-6 200-220 .39 } 194/205
 270-260 .10 } .25
 260-290 .35 } 90 ✓
 470-490 .37 } 332/355
 490-502 .20 } 31 ✓
 32

69-7 10 50-60 .40 ✓ 35/42 ✓
 40 360-400 .27 ✓ 255/283 ✓
 107 580-657 .44 ✓ 399/465 ✓

72-7 20 220-240 .27 ✓ 156/170 ✓
 72-5 150 220-370 .23 ✓ 152/262 ✓
~~640-650 .30 ✓ 052/460~~

1677'
 501.18
 .299

PA 32 0-110 .42
 110-160 .13
 160-170 .26

0-170 .33 ✓
 170

PA 31 0-10 .34
 10-60 .13
 60-150 .27

0-150 .23 ✓✓
 150
 # of internation = 24
 # of herbs = 21

69-6 100-410-510 .38 290/361 ✓✓

PA 45 10 90-100 .20 ✓✓
 10-140-150 .32 ✓✓
 200-210 .27
 210-240 .17
 240-350 .25

200-350 .24 ✓✓
 150

PA 30 90 0-90 .32 ✓✓

PA 39 40 40-80 .26 ✓✓

69-5 70 20-90 .45 ✓✓
 30 210-240 .30 ✓✓

PA 29 90-130 .24
 130-150 .10
 150-180 .21 } 90-180 .20 ✓✓
 90

ADIT Lowe

	Elm	Depth	Azi	Allen	Tree
P38 ✓	3790	110			
P49 ✓	3840	100		362	
71-6 (45°) ✓	3675	617	250	307	354
P35 ✓	3800	200		287	
P34 ✓	3750	200		295	
72-2 (50°) ¹⁶⁶ ✓	3870	303 (232)	284°	210	150
P28 ✓	3865	60		176	
72-2A (50°) ✓	3870	337 (258)	284°	160	70
73-3 ✓	3720	348	—	150	—
PA20 ✓	3870 ?	120			
P27 ^{10' N} ✓	3850	100		109	—
72-11 (90°) ✓	3850	271	—	99	—
72-1 (50°) ✓	3850	364 (279)	283	99	55
P50	3830	80		49	
REF _{4.10} P33 ✓	3750	146		45	
72-3 (50°) ^{South hole.} ✓	3870	613 (470)	284	2'S	158N
P51 ✓	3810	180		5N	
P55 ✓	3950	165		9N	
73-2 ✓	4000	517	—	46N	
PA-21 ✓	3760	100		65N	
P54 ✓	3950	150		85N	
P53 ✓	3950	210		149N	
72-17 (50°) ✓	3920	320 (245)	285	175N	258N
P52 ✓	3950	80		242N	
R2 ✓	4000	670		312N	
72-18 (40°) ¹⁶² ✓	3920	406 (267)	285	371N	495N
PA18	4030	100		612	
73-1 ✓ (90)	4000	502	—	895	—

612
4319
9319
4362

4030
3675
355

P38 -

P49 -

71-6 100-180 - .23 70/127 ✓✓ 80
 320-350 - .35 226/233
 510-530 - .48 361/375

P35 -

P34 60-200 - .58 ✓ 140
 72-2 0-28 - .30 ✓✓ 0/21 28
 233-251 - .20 178/132
 251-271 - .50 130 ✓ 70
 271-303 - .24

P28 0-10 .22
 10-20 .25
 20-30 .16
 30-40 .17
 40-50 .21

} .20 ✓ 50

72-2A 90-110 .43 69/84
 110-140 .09 1107
 140-170 .51 1120
 170-270 .10 1200
 270-310 .30 1237

} 69/237
 122 ✓
 220

73-3 80-90 .28
 90-130 .11
 130-140 .72
 140-160 .12
 160-240 .86
 240-260 .04
 260-348 .62

} .53 ✓
 180

PA 20 10-110 .33
 110-120 .17

} .32 ✓
 120

P27 0-10 .46
 10-20 .85
 20-30 .68
 30-40 .28
 40-50 .23
 50-60 .19
 60-70 .26
 70-80 .42
 80-90 .43
 90-100 .36

.42 ✓ ✓ 100

72-11 0-110 .52
 110-160 .13
 160-170 .30

.39 ✓ ✓ 170

72-1 0-220 .85 ✓ 0/168 ✓ 220

P50 0-80 .58 ✓ ✓ 80

P33 100-146 .31 ✓ 46

72-3 100-270 .52 ✓ 77/207 ✓ 170

P51 -

P55 120-165 .72 ✓ ✓ 45

73-2 120-130 .28 ✓ 10

180-190 .27 ✓ 10

240-260 .55 ✓ 20

510-517 .33 ✓ 7

PA 21 -

P54 -

P53 -

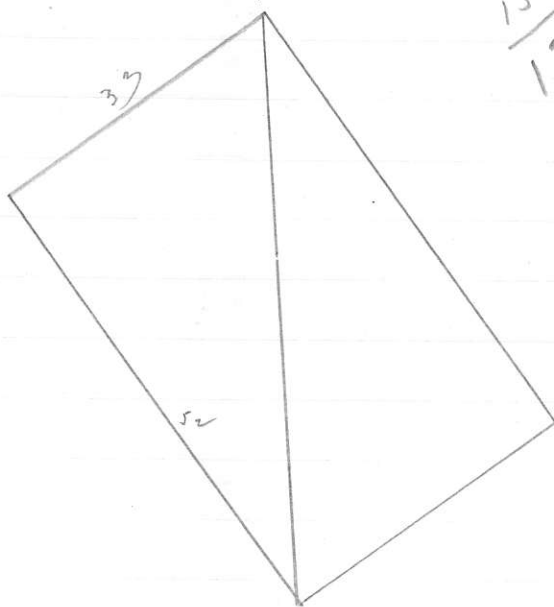
72-17 250-290 .79 192/222 ✓ 40

P52 -

R2 220-230 .37 ✓ 20

590-670 .23

$$\begin{array}{r} 52 \times 33 \\ 33 \\ \hline 156 \\ 156 \\ \hline 1716 \end{array}$$



$$\begin{array}{r} 20 \times 33 \\ 33 \\ \hline 66 \\ 66 \\ \hline 132 \end{array}$$

72-18 -	110 - 230	138	} 33 771/174	160
	230 - 260	109		
	260 - 270	147		
PA 18 -	-	-		
73-1	350 - 370	125 ✓		20

of interest ins = 23
 # of holes involved = 28

Total freight = ~~2006~~ / # interest ins.

~~1500~~
 904.57
 1451