

INTERNATIONAL FIELD SERVICES INC.

Consultation, Exploration & Management

SUITE 905
837 WEST HASTINGS STREET
VANCOUVER, BRITISH COLUMBIA
V6C 1B6 (604) 687-6930

8003/1

September 16, 1987

Chandi Resources Corporation
320 - 470 Granville Street,
Vancouver, B.C.

Attn: Mr. Alex Hamilton

Re: Magnetometer Survey On Kwoiek 3 Mineral Claim

Dear Mr. Hamilton:

At your request, a magnetometer survey was conducted over the 12 unit claim of Kwoiek #3 mineral claim in the Kamloops Mining Division from September 2nd through the 6th.

The survey required re-running of the previous lines due to weather elimination of the previous flagging.

Over the seven cross lines which totalled 5,760 meters (3.6 miles), including the baseline, a total of 266 magnetometer readings were taken.

The survey utilized a Scintrex MP2 portable proton precession magnetometer, model # 767010. This unit uses the phenomenon of nuclear magnetic resonance to measure the flux density of the total magnetic field.

Readings were taken and recorded every 20 meters along the grid lines which were spaced at separations varying from 100 to 125 meters.

The crosslines were laid out north-south to cross at right angles to regional structures and the conductors from the previous EM-16 survey.

The accompanying map is a contoured gamma map of the area surveyed. The magnetic base figure is 56,500 gammas with increase shown above while negatives are shown below this base reading. All readings were field corrected according to the daily diurnal variations.

Elevation contour lines have been located on the map along with road outlines and steep cliff-faces.

The survey shows a general build-up in gamma values in the southwest section of the map. The high of +805 gammas shows buildup along the line but little lateral projection. The moderate values experienced on the western four lines is not

repeated in the eastern lines save for the lower half of line 2 + 50 west. The negatives introduced in these eastern lines suggest a formational change running northwest - southeast and being coincident with the steep cliffs of lines 3 + 75 west and 5 + 00 west.

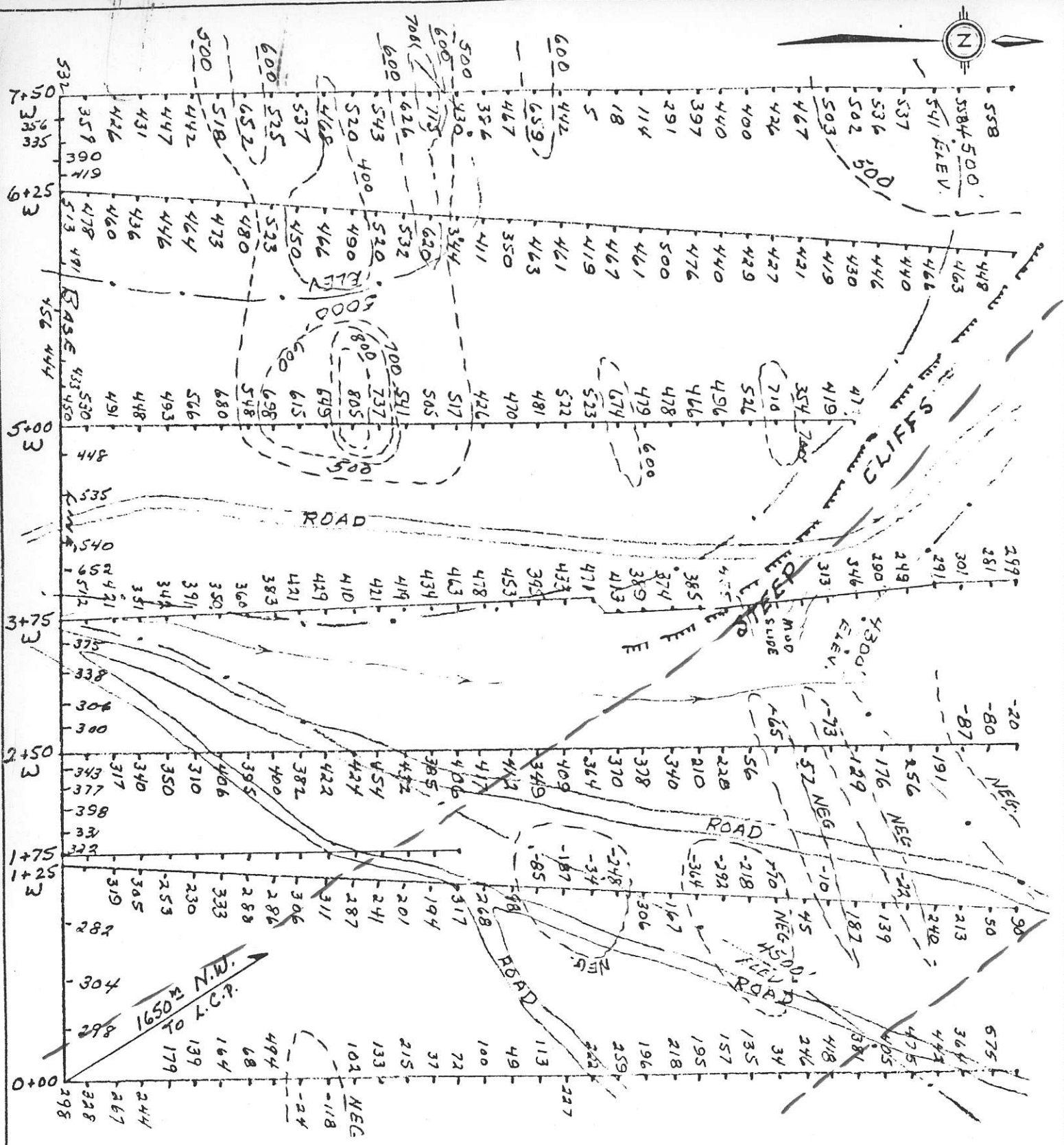
A modest buildup of gamma values near the north end of line 0 + 00 suggest the more magnetic structural formation as evinced in the western half is repeating itself. This is suggested on the plan map by the dash lines.

It is recommended that Chandi give consideration to mapping this area in preparation for a possible modest drill program which will evaluate the conductors of the EM-16 program and the magnetic trends of the recently completed magnetometer survey.

Respectfully submitted,

W.G. Hainsworth, P.Eng.

WH/ts



SCALE 1:4000



MAG. BASE READING = 56,500 gammas.

CHANDI RESOURCES CORPORATION
 KWOIEK 3 MINERAL CLAIM
 KAMLOOPS M.D.-B.C. NTS:921/4

MAGNETOMETER CONTOUR
 MAP

FIG. 6

SEPT 15, 1987

WHA