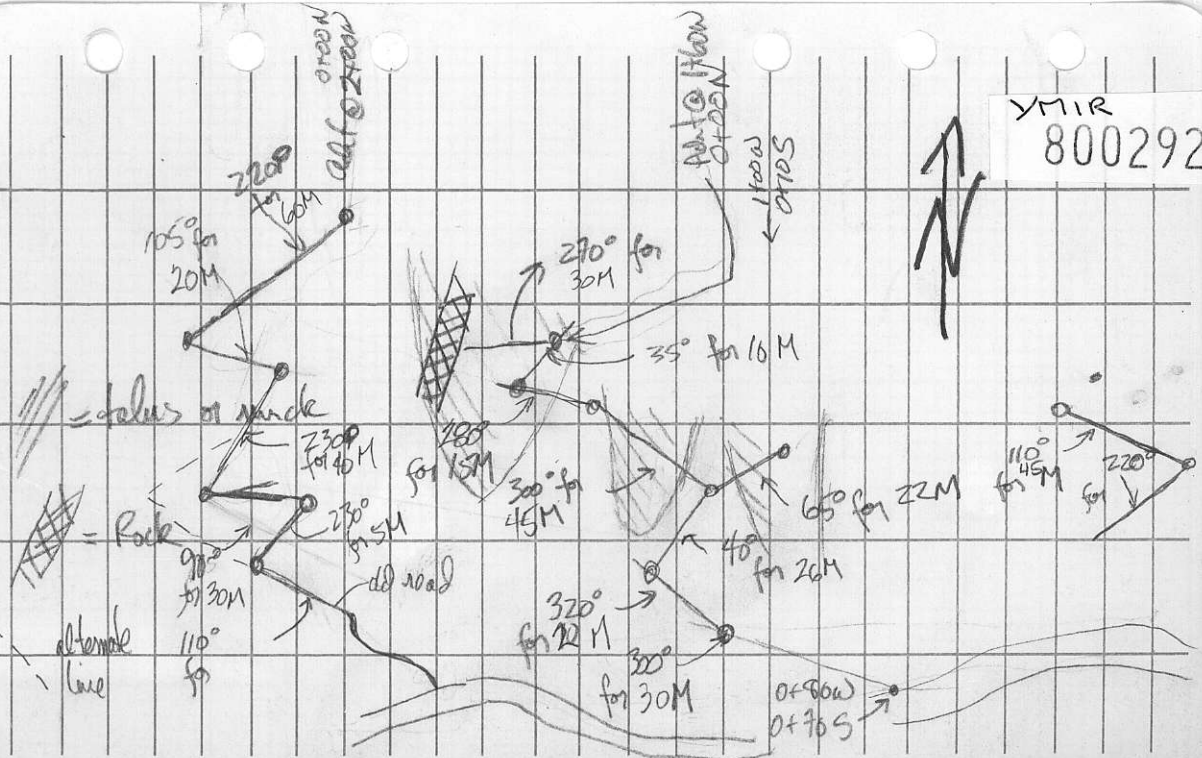


YMIR
800292



8/11/86

$$\#1 = 360^\circ \quad 100'$$

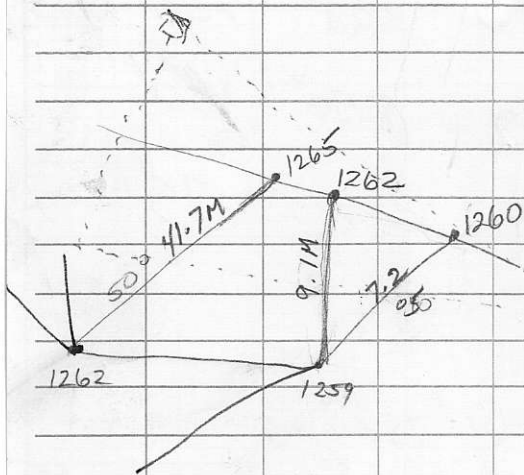
$$\#3 = 320^\circ \quad 150'$$

$$\#2 = 050^\circ \quad 100'$$

$$\#4 = 360^\circ \quad 75' (50)$$

$$\#5 = 040^\circ \quad 75' (50)$$

Case 850
cut @ \$75.00/m - 9 hrs. FR
manually charges \$83.00/m - hrs. SAT



ADULT
#8

1230

6/11/86

No. 1 shaft 1303M.

No. 2 workings 1295M

No. 3 workings 1285M (RAISE elev)

Main Shaft 1278M MUCK PILE
(OLD PORTAL)

West 1295M

MS 1295M

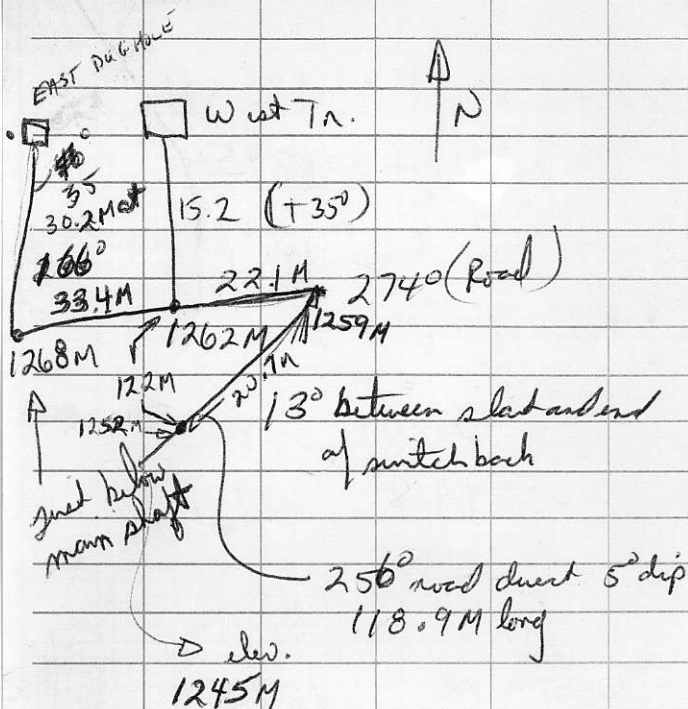
EAST

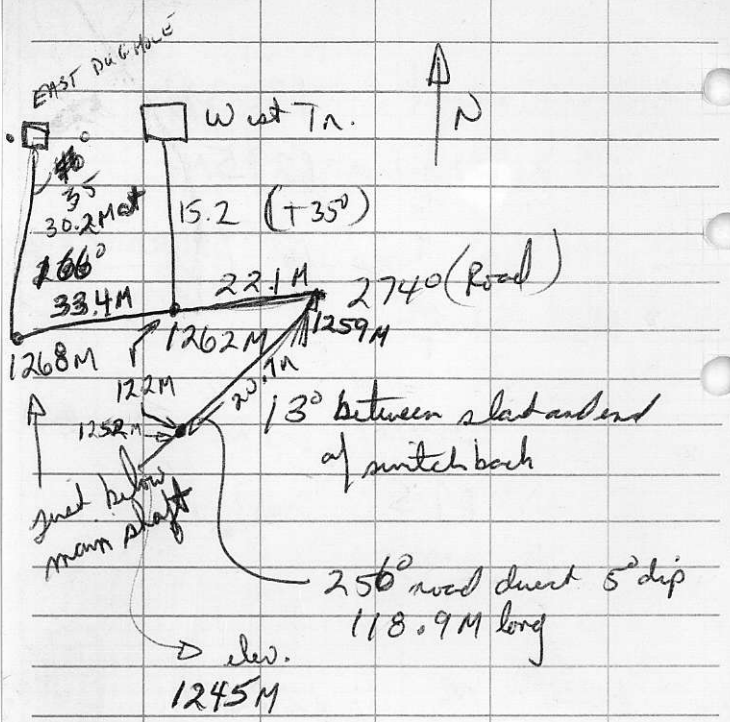
WEST TR 1285M

EAST TR 1265M

12.4M between trenches

South 15.2M is road (+35°)





6/11/86

No. 1 shaft 1303M.

No. 2 workings 1295M

No. 3 workings 1285M (RAISE elev)

Main Shaft 1278M MUCK PILE
(OLD PORTAL)

West 1295M

MS 1295M

EAST

WEST TR 1285M

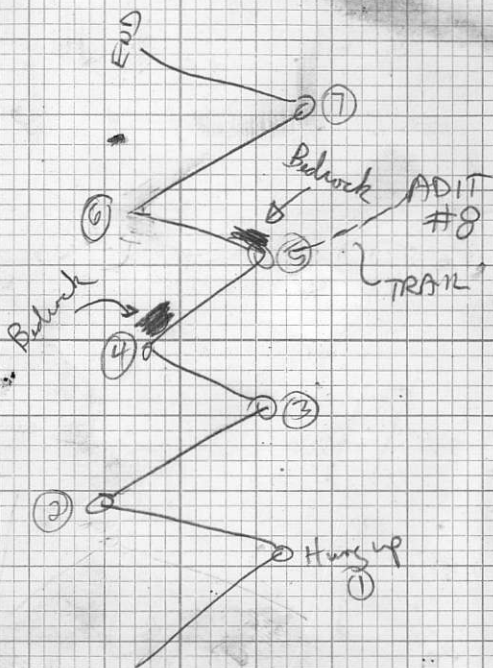
EAST TR 1265M

12.4M between trenches

South 15.2M is road (+35°)

Royal Banker Nelson

go under crevasse
go to 4 way stop (no light)
just before is road to right
then go to 1ST light, bank
is near here

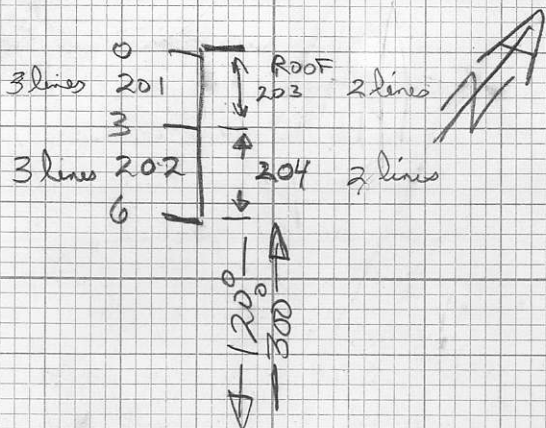


9/11/86

#2 Adit

Sampling Map

NOT TO SCALE



- lines ran for each sample spaced \approx 10 cm apart.

#201

- rock appears to be silicified carbonate/dolomite, pyrite as blebs in interstitial quartz veins, blebs \approx 6 cm x 2 cm, one blb had what looks like \approx 20% galena/sphalerite
- rock is Fe stained on weathered surface

#202 pyrite 2-5%, galena \approx 2%, rock siliceous as before, shattered, chert + limonite stains throughout, max. water circulation through fractures.

203 - as for 201 - roof rock well
fractured by blasting, tends to fall very
easily - only 2 rows run to obtain
sample, pyrite \bar{c} ore galena, ^{some sphalerite!}
disseminated throughout rock in 2-3cm
quartz veins, veins tend to see \bar{c} lamp
lenses - Fe staining throughout

204 - roof again crumbly / fractured, pyrite
in blebs and 0.5cm veins \approx 3-5% of
rock, sample hard to take, ^{easily} due to rock
falls, what may be very finely
disseminated galena ^{or sphalerite} in quartz veins (5cm)
lenses + iron staining on most rock, rock well
fractured, water movement (more at
this point of time) through fractures

- heavy sulphur smell when all
four samples taken
- area of interest alt is 0.5M
mils although all rock sections / stained
- rock looks sheared in places
- punch and smell of quartz / pyrite rich
area.