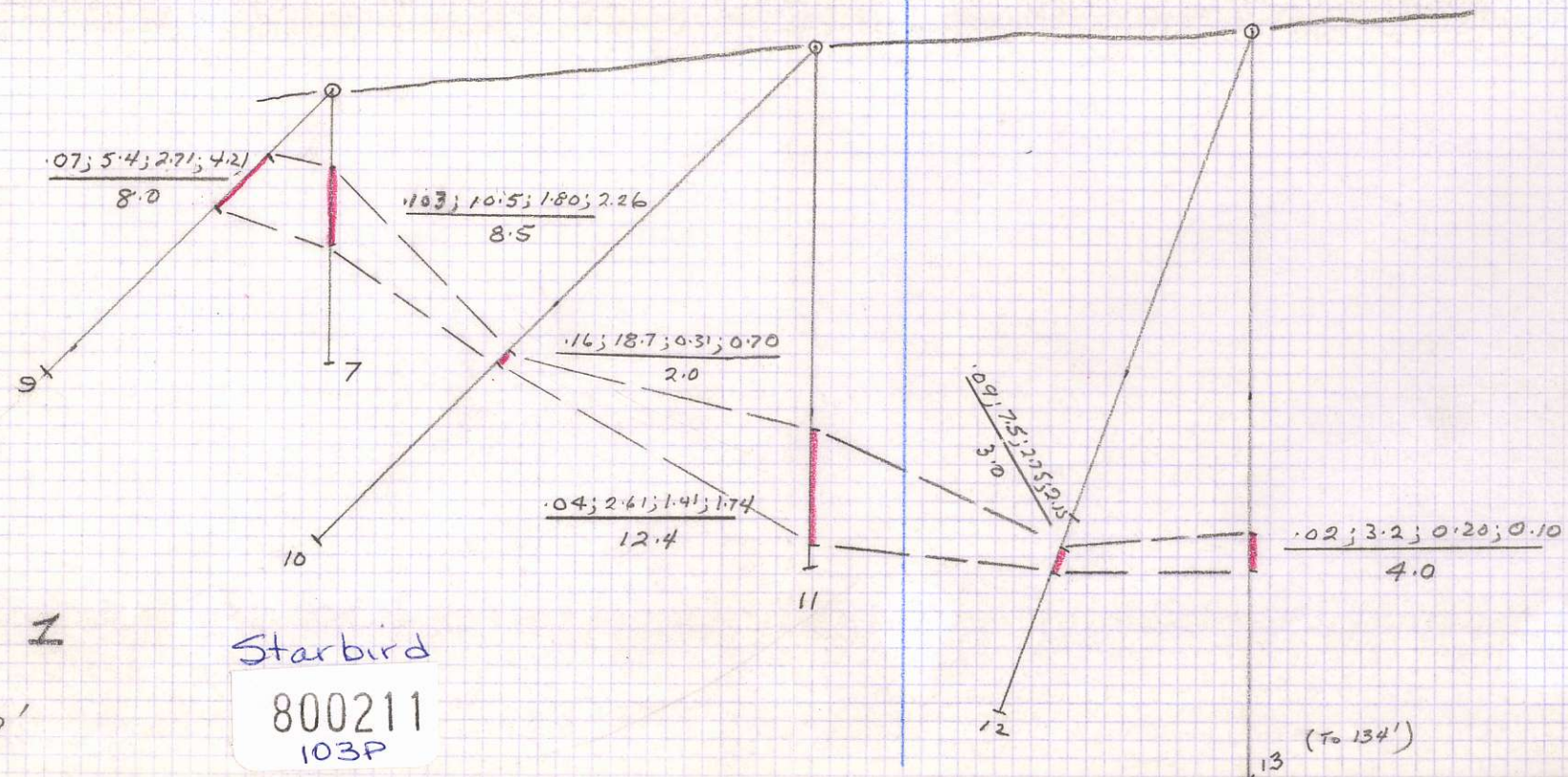


2600'



LINE 1

1" = 20'

Starbird

800211
103P

$\frac{.06; 6.63; 3.71; 4.51}{17.0}$

$\frac{.14; 9.7; 0.30; 0.70}{3.5}$

$\frac{.04; 3.1; 0.10; 0.15}{3.5}$

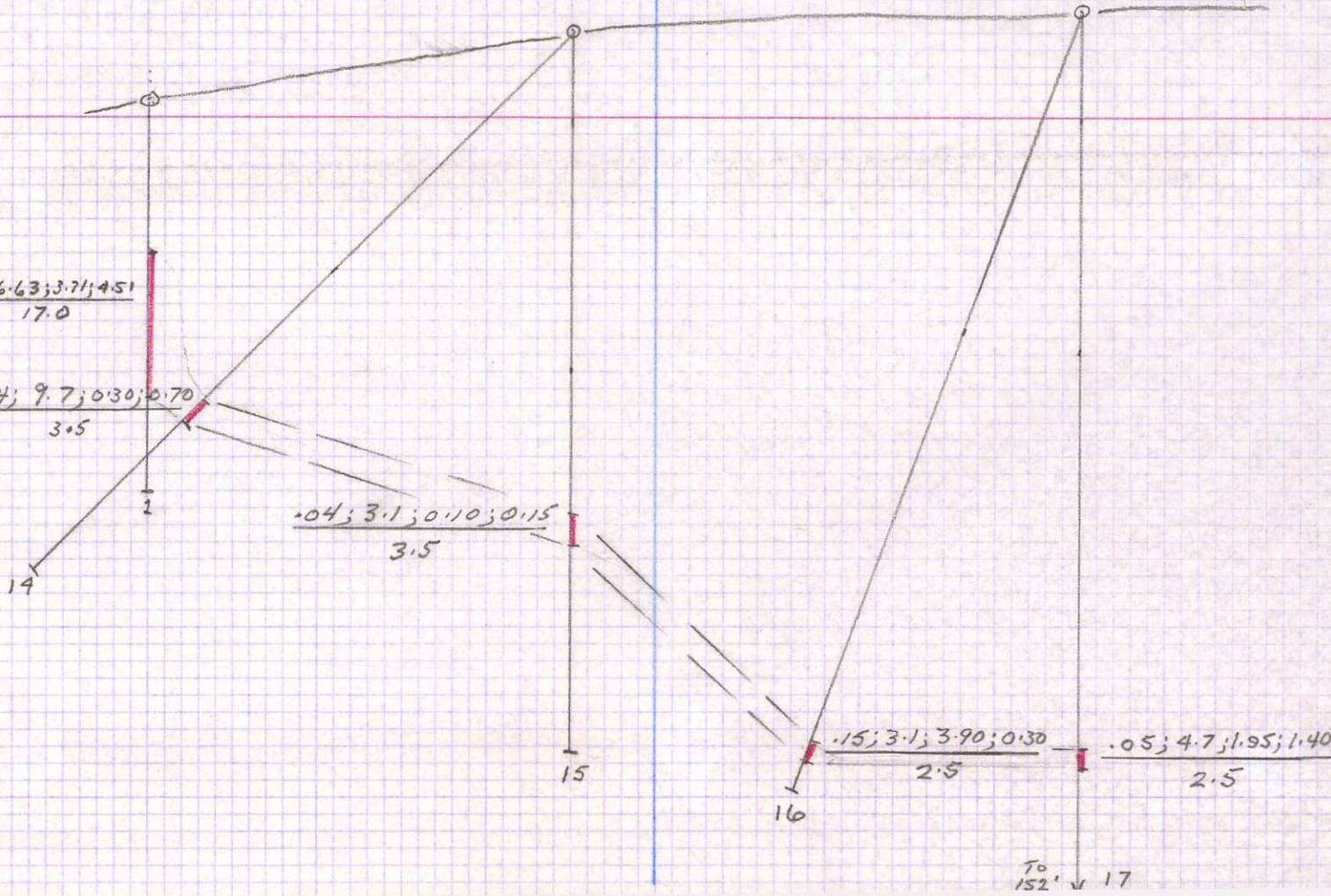
$\frac{.15; 3.1; 3.90; 0.30}{2.5}$

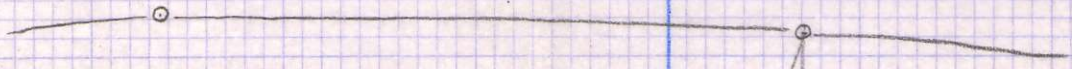
$\frac{.05; 4.7; 1.95; 1.40}{2.5}$

2600'

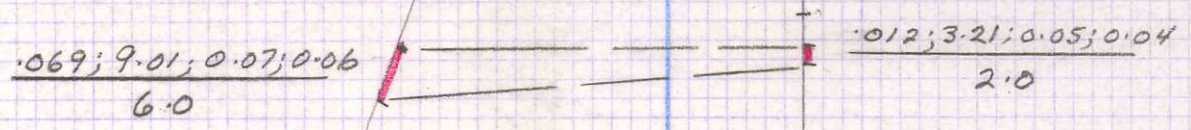
LINE 2
1" = 20'

To
152' v 17





2600'



LING 5
1" = 20'

To
186'

25

To
204'

26

1" = 20'

