

	Hole	Width	Au	Ag	Pb	Zn	
Line 1 -	7	8.5	.103	10.50	1.80	2.26	800207
	9	8.0	.07	5.40	2.71	4.21	103P
	10	2.0	.16	18.70	0.31	0.70	
	11	12.4	.04	2.61	1.41	1.74	
	12	3.0	.09	7.50	2.75	2.15	
	13	4.0	.02	3.20	0.20	0.10	

Slope Days							
120'	(6)	6.3	.069	6.27	1.69	2.18	
Line 2	14	3.5	.14	9.70	0.30	0.70	
	15	3.5	.04	3.10	0.10	0.15	
	16	2.5	.15	3.10	3.90	0.30	
	17	2.5	.05	4.70	1.95	1.40	

Slope Days								
115'	(5)	5.8	.074	6.10	2.73	2.90		
Line 3	6	6.5	.066	2.18	2.15	2.70		
	18	3.0	.039	8.99	0.12	0.59		
	21	2.0	.051	3.76	0.01	0.03		
	22	No intersection						

Slope Days							
100'	(3)	3.8	.056	4.23	1.25	1.69	
Line 5	25	6.0	.069	9.01	0.07	0.06	
	26	2.0	.012	3.21	0.05	0.04	
Slope Days	(2)	4.0	.055	7.56	0.07	0.06	
45'							

strike length = 190' (16) 5.4 .065 6.09 1.58 1.87

Au = 100
Ag = 2.80
Pb = 17.4
Zn = 28

Gross Value = \$3470

Tonnage = 190 x 5.4 x 120 = 12,312 tons.

Rec. Smelt. Returns.
Au = 95% Au = 98%
Ag = 95% Ag = 95%
Pb = 90% Pb = 90%
Zn = 68% Zn = 70%

Net Value = \$27.89

[Not including: Plant Capital Costs
Mining Costs
Hull Costs
Transp. Costs
H.O. Costs, etc.]

3955

688-8586

2618838

Send cheque for ~~2000~~

Cost -

	<u>Am.</u>	<u>Ac</u>	<u>Ph</u>	<u>En</u>
15'	.01	.1	.02	.01
16	.01	.1	Tr	.01
17	.04	.6	1.04	.21
18	.01	.1	.01	.01
# 6 19	.02	.2	.01	.02
20	.05	1.3	1.32	.51
21	.02	.4	.12	.19
22	.05	2.3	1.88	2.24
23 1 1/2'	.12	1.8	3.04	4.24
24	Tr	Tr	.05'	.10
25	.01	.1	.01	.02
26	Tr	Tr	.01	.03
# 2 27	.02	1.4	.01	.02
28	.02	1.3	.02	.03
29	.01	.1	.02	.04
30	.01	.3	.23	.25
31	Tr	2	Tr	.01
32	.03	3.8	15'	.21
# 4 33	.02	.4	30	.88
34	.01	.2	14	.22
35	.03	.7	25	1.76
36 not	.01	.2	Tr	.14
37	.02	.4	02	.06

38	.2	.3	.04	.03
39	.62	.3	Tv	.01
40	.01	.2	:	:
41	.01	.3	:	:
42	.01	.3	:	:
43	.01	.1	:	:
44	Tv	Tv	:	:
45	Tv	Tv	Tv	.01
46	Tv	.1	Tv	.01
47	.01	1.7	.01	.03
48	.11	12.4	.20	.37
49	.13	15.2	1.04	1.02
50	.08	3.6	4.31	5.39
51	.01	.5	.04	.15
52	Tv	.2	.01	.01
53	:	.2	Tv	.01
54	:	.2	Tv	.01
55	:	.1	.03	.30
56	:	.3	.05	.30
5957.	:	.2	.01	.01
no tag.	:	.3	Tv	.01

10.49

1.80

2.26

8 1/2

		Au	Hg	Pb	Zn
23101	100 lbs lift	39	60.1	8.94	3.92
102	10' lift	13	22.2	8.82	.15
103	50' along wall	31	11.5	3.36	3.20

Veniz
no tag .21 4.6 5.18 2.24

#1 - 2563.8

2 - 2583.5

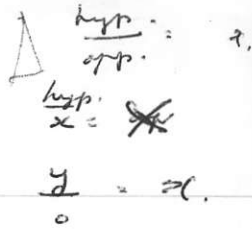
3 - 2566.4

4 - 2566.4

5 - 2605.1

6 - 2585.8

7 - 2554.8



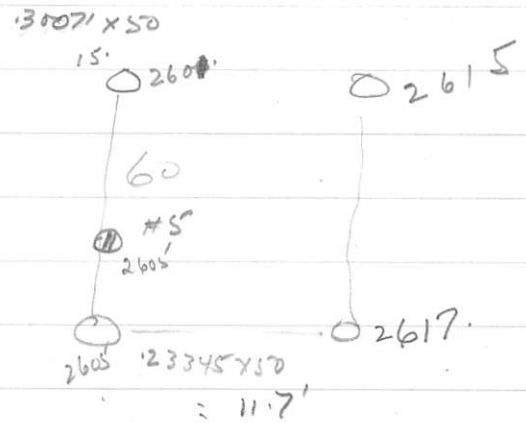
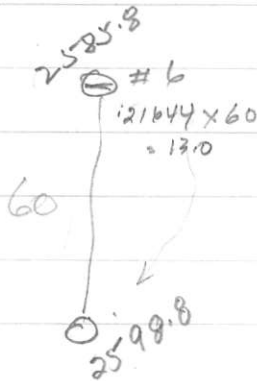
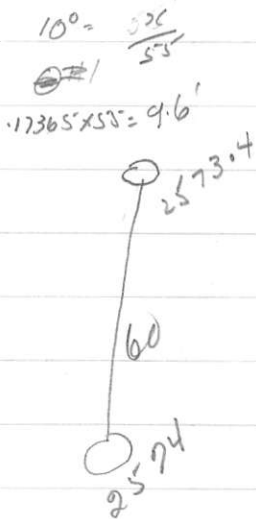
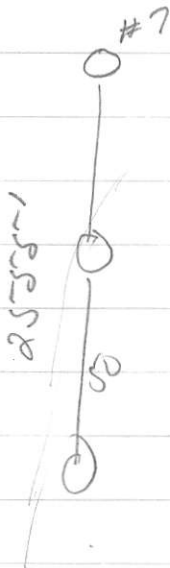
$$\sin = \frac{y}{hyp.}$$

sin 12"2 = .21644

10 = .17365

17 1/2 = .30071

13 1/2 = .23345



July 6 - 14 and
11/11/11
Days on site (9 days) (on site) 1 day
Days off site (3 days) (10 days for prep + job)
Days off site (3 days) 3