

92-I-12

800076

ACACIA MINERAL DEVELOPMENT  
CORPORATION LIMITED (N.P.L.)  
KAMLOOPS MINING DIVISION

REPORT

BY

D.C. MALCOLM, P. Eng.  
Consulting Geologist

Vancouver, B.C.  
July 31, 1972

Contact:

Frank Bull (June 15/75)

795 - 5930

re property

C O N T E N T S

	Page
SUMMARY. . . . .	1
LOCATION . . . . .	1
CLAIMS . . . . .	2
GENERAL GEOLOGY. . . . .	2
CLAIM GEOLOGY. . . . .	3
DEPOSITS . . . . .	3
CONCLUSIONS. . . . .	5
RECOMMENDATIONS. . . . .	5
ESTIMATED COSTS. . . . .	5
CERTIFICATION	
MAPS	

ACACIA MINERAL DEVELOPMENT  
CORPORATION LIMITED (N.P.L.)  
KAMLOOPS MINING DIVISION  
BRITISH COLUMBIA

SUMMARY

The Acacia Mineral Development Corporation claims cover areas of disseminated chalcopyrite and magnetite in brecciated sediments and volcanics intruded by feldspar porphyry dikes. Pyritic gossan zones surround the trenched areas.

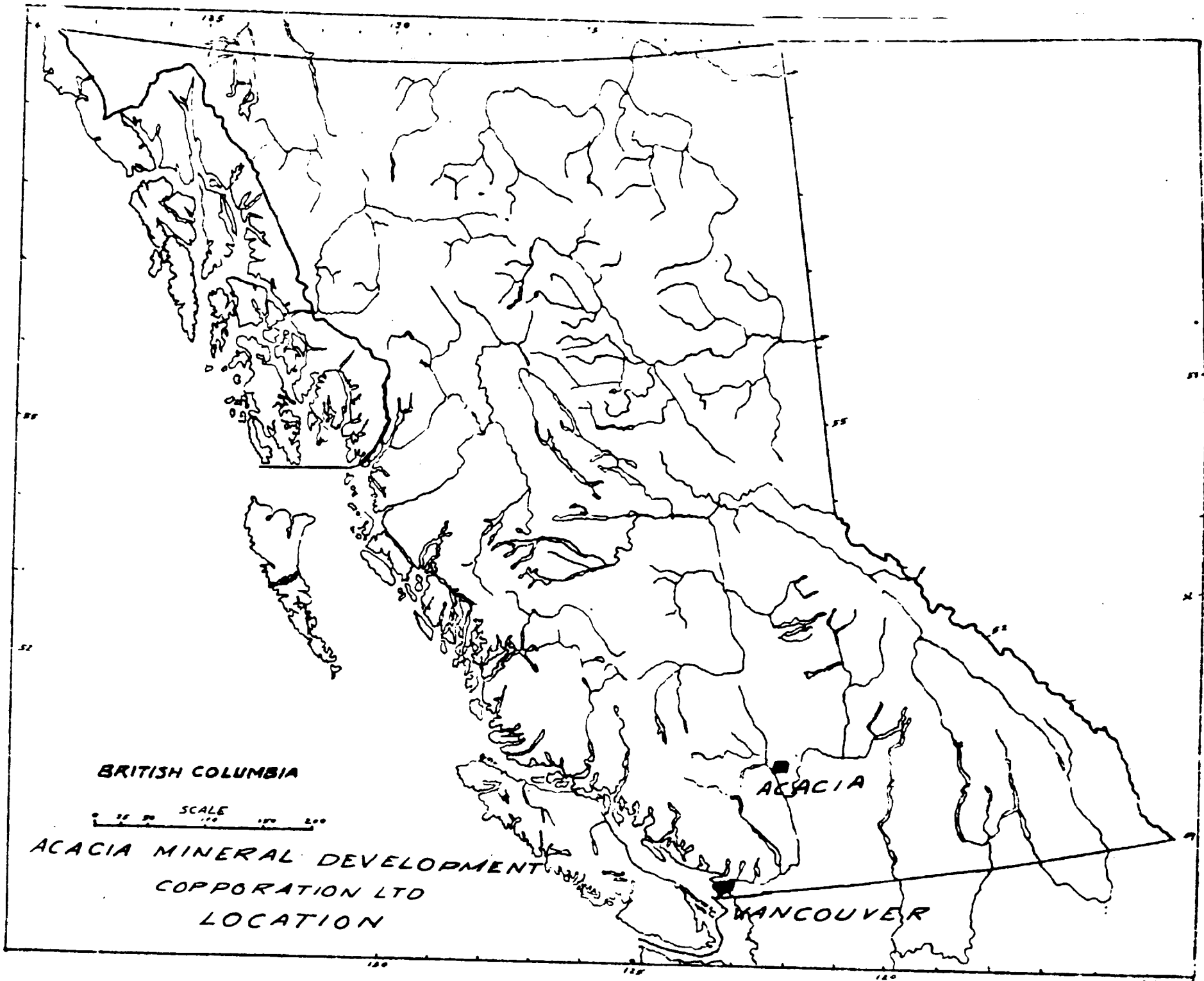
The deposit may be suitable for open pit mining.

I recommend additional bulldozer trenching directed by a magnetometer survey to outline the size of the copper deposit. Drilling will be necessary to determine copper grades if the trenching is successful in outlining a large mineralized area.

LOCATION

Latitude: 50°30' North  
Longitude: 121°34' West  
Elevation: 1,500 to 5,000 Feet

The claims are south of McGillvray Creek, east of the Fraser River, 20 miles north of Lytton.



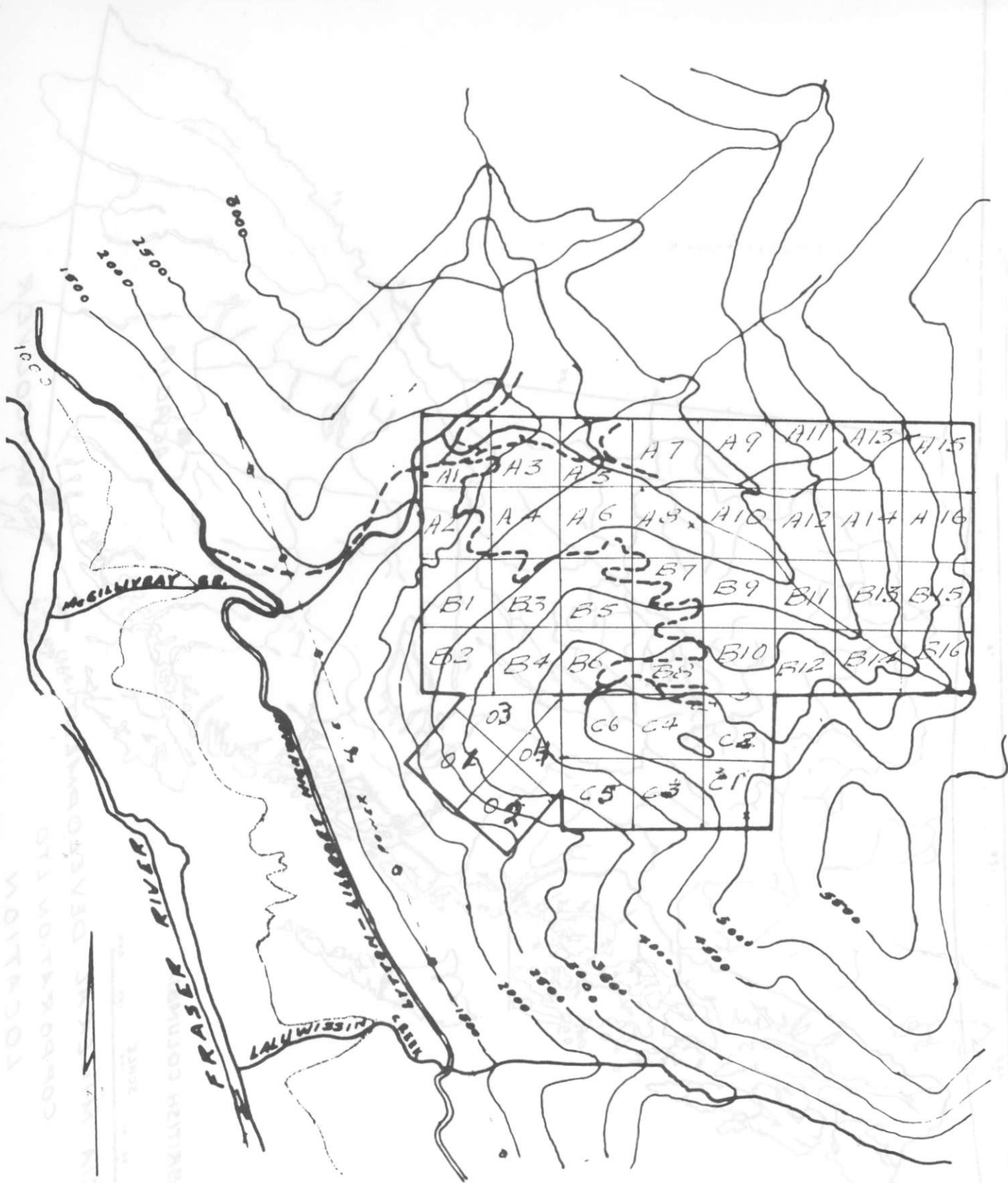
BRITISH COLUMBIA

SCALE  
0 50 100 150 200

ACACIA MINERAL DEVELOPMENT  
CORPORATION LTD  
LOCATION

ACACIA

VANCOUVER



INDIA MINERAL DEVELOPMENT CORPORATION LTD.

CLAIMS

SCALE 1/2 MILE

DATE 27.7.77

They are reached by logging roads off the Lytton-Lillooet Highway.

### CLAIMS

Forty-two located claims:

A Numbers 1 to 16, inclusive; Record Numbers 81,352 to 81,367, inclusive, with assessment due in June, 1973.

B Numbers 1 to 16, inclusive; Record Numbers 81,368 to 81,383, inclusive, with assessment due in July, 1973.

C Numbers 1 to 6, inclusive, with assessment due in 1973.

O Numbers 1 to 4, inclusive; Record Numbers 87,575 to 87,578, inclusive, with assessment due in 1974.

### GENERAL GEOLOGY

The area is on the east side of the Fraser River in a fault block or graben that lies east and parallel with the Coast Range Mountains.

The block is underlain by Permian, Triassic, Jurassic and Cretaceous sediments and volcanics and intruded by Jurassic, Cretaceous and Tertiary crystalline

rocks. It is bounded by major faults along the Fraser River valley and by faults which extend from the British Columbia-Washington State boundary through Princeton, Merritt, th Thompson River valley to the Chilcotin.

The fault block is intensely faulted and altered over large areas which often contain large copper mines and prospects.

#### CLAIM GEOLOGY

The rocks on the claims are extensively brecciated sediments and volcanics (andesite, cherty tuffs, limestone and limestone breccias). They are intruded near the mouth of McGillivray Creek by diorites of the Mount Lytton batholyth and to the east at the headwaters of the Creek by quartz diorite.

Feldspar porphyry dikes intrude brecciated andesites and limestone breccias. The dikes and adjacent intruded rocks contain disseminated chalcopryrite, magnetite and bornite. Andesites, further from the dikes, contain massive and disseminated pyrite. Large areas of these pyritized rocks form limonite surface gossans.

#### DEPOSITS

The main deposits occur at the summit of a ridge and along its flanks between elevations 4,500

and 5,000 feet. On the north side of the ridge a number of small hand trenches expose sheared and brecciated feldspar porphyry and altered limy volcanics. Five samples over an area 200 feet by 200 feet, averaged 0.42% copper.

A road has been built from McGillivray Creek to the lower part of the deposit on the north slope of the ridge. Trenches have been roughed out partly across the deposit at elevations 4,650 and 4,800 feet.

On the south side of the ridge, 1,500 feet south of these trenches, chalcopyrite occurs with magnetite in old trenches and malachite stained feldspar porphyry forms a slide in a dry gulch. One picked sample assayed 0.37 oz. silver per ton and 7.16% copper.

On the road, at elevation 3,300 feet, a porphyry dike was exposed. Chalcopyrite bearing limestone breccia float occurs near it.

Pyritic deposits occur over a large area east of the porphyry dikes and extend across the claims. Two outcrops have been sampled and assayed 0.095% and 0.15% copper.

A spring, at elevation 3,600 feet near McGillivray Creek, deposits a white precipitate which showed 1.19% silicon and 84.75% alumina.



CONCLUSIONS

The Acacia claims cover an interesting copper deposit at least 200 feet wide and it could extend for 1,500 feet along a strike.

RECOMMENDATIONS

Bulldozer trenching should be extended across the deposit to expose its full width and parallel trenches should be made across the ridge to the south trenches. The zone contains magnetite so a magnetometer survey should be made to outline the deposit and to search for parallel occurrences. When this work is completed the deposit should be drilled to determine tonnages and grades.

ESTIMATED COSTS

Stage 1.

Magnetometer Survey	\$ 5,000.00
Bulldozer Trenching	10,000.00
Assaying & Sampling	2,000.00
Camp & Supplies	1,000.00
Geological Mapping	2,000.00
Transportation	2,000.00
Consulting	1,000.00
Contingencies	<u>2,000.00</u>
TOTAL	<u>\$25,000.00</u>

Stage 2.

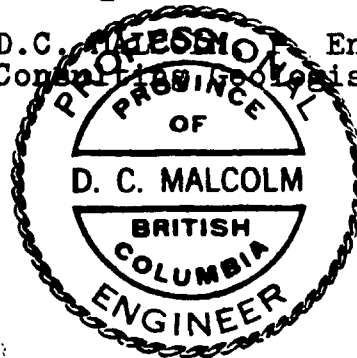
Drilling	\$30,000.00
Mobilization	1,000.00
Assaying & Sampling	3,000.00
Camp & Supplies	3,000.00
Transportation	3,000.00
Supervision	3,000.00
Consulting	1,000.00
Recording	1,000.00
Contingencies	<u>5,000.00</u>
TOTAL	<u>\$50,000.00</u>

Report by

*D. C. Malcolm*

D.C. MALCOLM Eng.  
Consulting Geologist

Vancouver, B.C.  
July 31, 1972



C E R T I F I C A T E

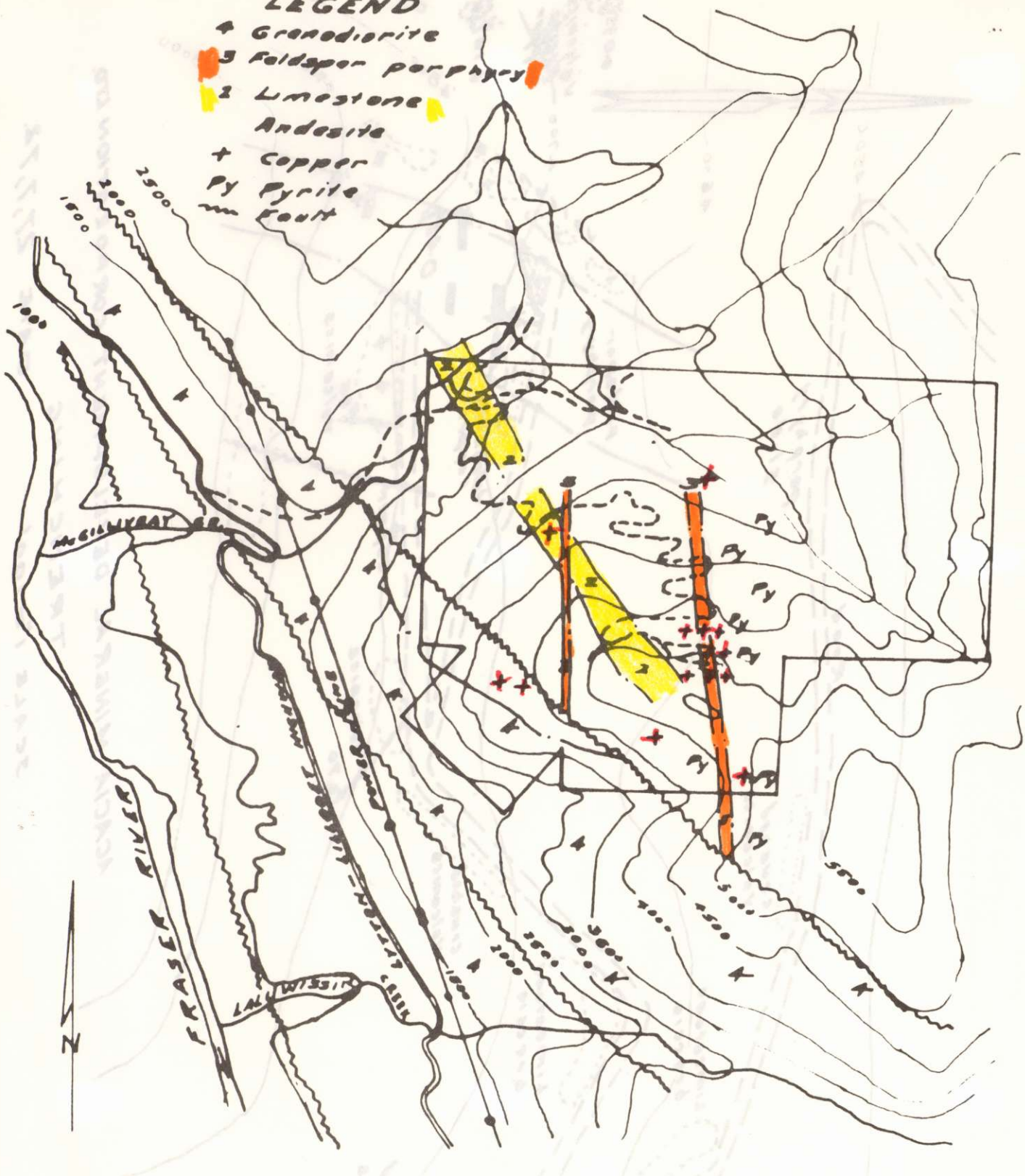
This is to certify:

1. I, DOUGLAS COLE MALCOLM am a resident of Vancouver, B.C., and live at 2290 West 23rd Avenue.
2. I am a graduate of the University of British Columbia, with the degree of Bachelor of Applied Science in Geological Engineering (1935).
3. I am a member of the Association of Professional Engineers of British Columbia and Ontario and have practised my profession continuously since graduation.
4. I have not, directly or indirectly, received or expect to receive any interest, direct or indirect, in the property of ACACIA MINERAL DEVELOPMENT CORPORATION LIMITED (N.P.L.), or of any affiliate; or beneficially own, directly or indirectly, any securities of the company or of any affiliate.
5. This report is based on personal examinations made in 1971 and on July 23, 1972 in the company of Mr. FRANK BUIL. The principal posts were examined and the claims appear to be well staked.



**LEGEND**

- 4 Granodiorite
- 3 Feldspar porphyry
- 2 Limestone
- Andesite
- + Copper
- Py Pyrite
- Fault

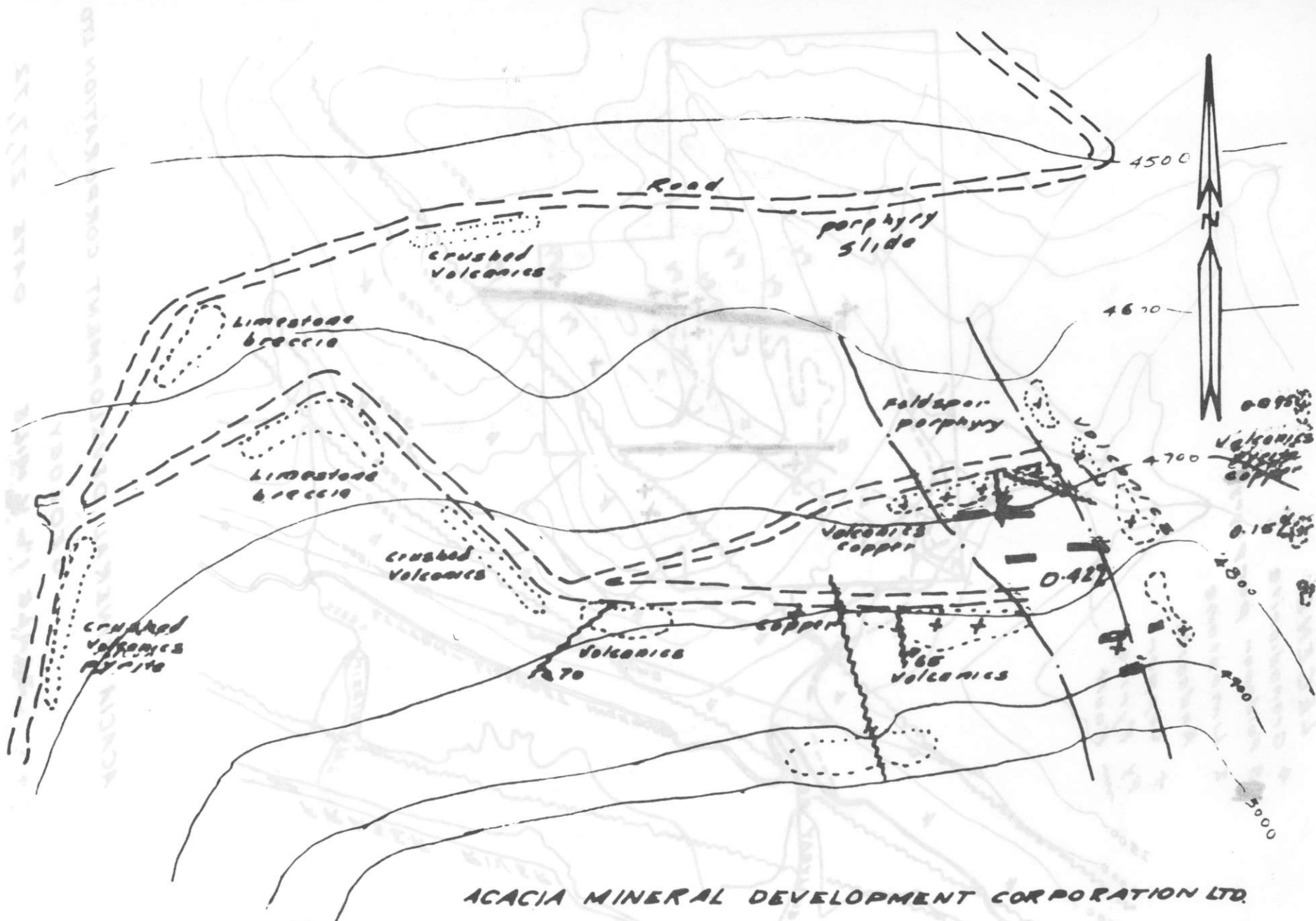


ACACIA MINERAL DEVELOPMENT CORPORATION LTD

GEOLOGY

SCALE 1" = 1/2 MILE

DATE 27, 7, 72.



ACACIA MINERAL DEVELOPMENT CORPORATION LTD.