

1979 GINER CORP.

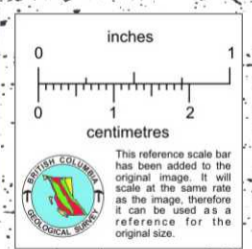
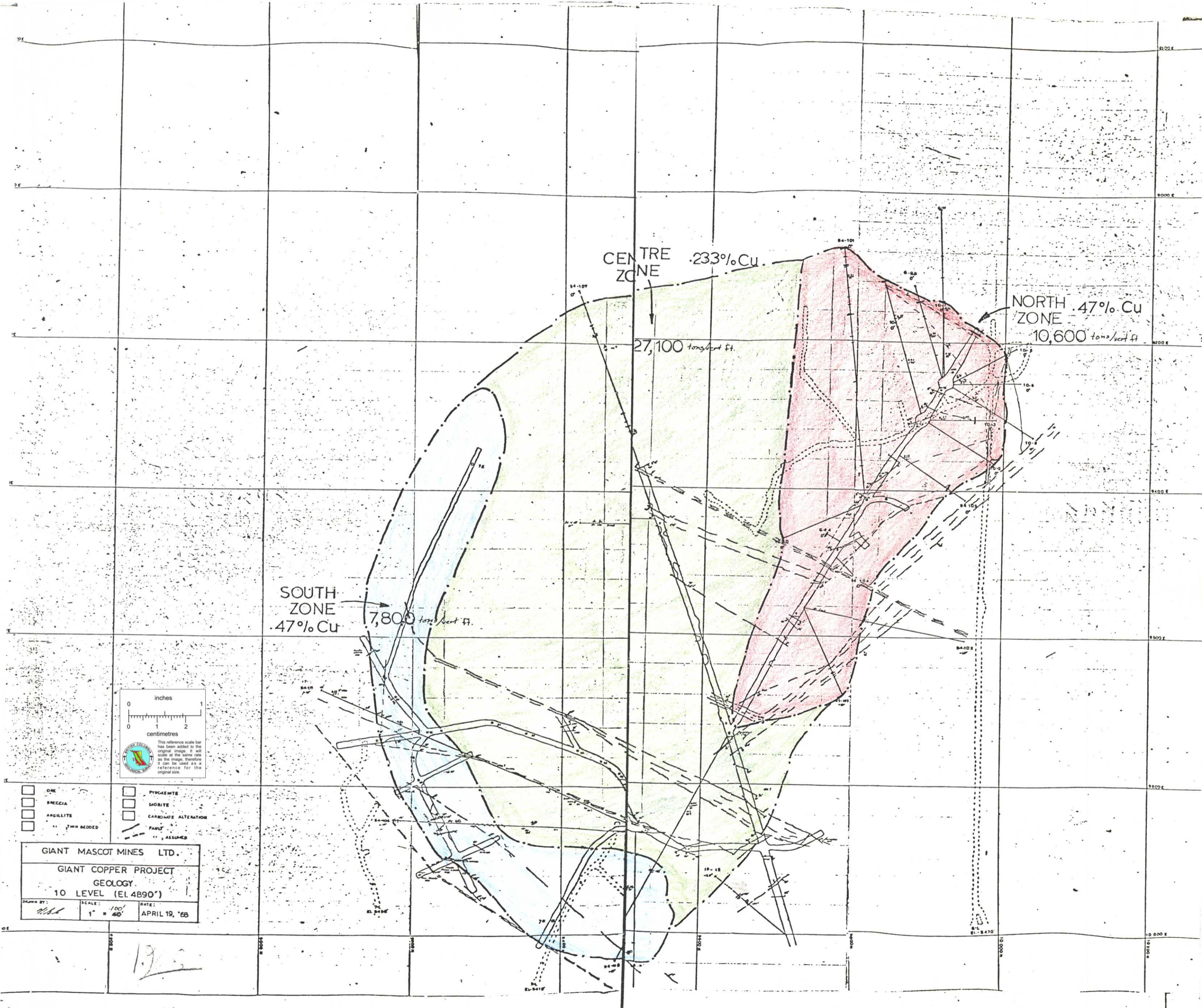
Zone	Wall Channel Samples			Development Samples			Test Hole Samples			D. D. Hole Samples			
	# Sampls	Total % Cu	Area Description	# Samples	Total % Cu	Area Description	# Samples	Total % Cu	Area Description	# Samples	Total % Cu	Area Description	Av. Gr.
North Zone	.67	33.85	*8 Zone							106	30.73	DDH 54-101 to 105	261.17 491
	.96	71.45	*9 Zone							43	19.44	DDH G-84, 88, 145	= 0.53
										179	105.74	DDH 10-1 to 6 + 100	
Centre Zone	62	16.30	*3 Zone	165	41.58	*3+4 Zones	54	7.95	*6+7 Zones	48	4.42	DDH 54-107	188.76 840
	68	16.46	*4 Zone	26	6.37	*5 Zone				81	8.51	DDH G-149	= 0.224
	29	7.27	*5 Zone (Sump Station 7710N)										
	104	30.89	*6 Zone										
	109	34.99	*7 Zone										
	45	8.04	*8 Zone										= 0.25 (without DDH + test Hole)
	49	6.89	*9 Zone										
South Zone	112	37.97	*1 Zone	224	70.78	*1 Zone	167	44.75	*1 Zone	16	3.68	DDH G-152	670.61 1418
	147	114.95	*2 Zone	227	180.92	*2 Zone	200	92.40	*2 Zone	24	5.28	54-108	
	41	12.33		49	19.38		151	67.04		30	13.93	54-108	= 0.473
										30	7.20	54-111	

North Zone : 8000 tons/vert ft X 0.53 = 4240
 Centre Zone in 29,700 " " X 0.224 = 6653
 South Zone : 7,800 " " X 0.47 = 3,666
 Totals 45,500 " " 14,259

GRADE IN % Copper = 0.32 @ 45,500 tons/vert foot.

800063

1968



- ONE
- BRECCIA
- ARGILLITE
- 7" BEDDED
- PYROXENITE
- MIBSITE
- CARBONATE ALTERATION
- FAULT
- ASSURED

GIANT MASCOT MINES LTD.
 GIANT COPPER PROJECT
 GEOLOGY
 10 LEVEL (EL. 4890')

DRAWN BY: *H.A.L.* SCALE: 1" = 40' DATE: APRIL 19, '68

19.5