



Chemex Labs Ltd.

Analytical Chemists • Geochemists • Registered Assayers

212 BROOKSBANK AVE., NORTH VANCOUVER,
BRITISH COLUMBIA, CANADA V7J-2C1

PHONE (604) 984-0221

To: PACIFIC GEO-ROC EXPLORATION LTD.

256 - 409 GRANVILLE ST.
VANCOUVER, BC
V6C 1T2

800039

A8817779

Comments: CC: PACIFIC GEO-ROC EXPL - ANYO CAMP

CERTIFICATE A8817779

PACIFIC GEO-ROC EXPLORATION LTD.

PROJECT : MOLY MAY

P.O.# : NONE

Samples submitted to our lab in Vancouver, BC.

This report was printed on 5-JUL-88.

SAMPLE PREPARATION

CHEMEX CODE	NUMBER SAMPLES	DESCRIPTION
202	89	Dry, sieve -80 mesh, save reject
217	1	Geochem: Ring only, no crush/split
238	90	ICP: Aqua regia digestion

* NOTE 1:

The 32 element ICP package is suitable for trace metals in soil and rock samples. Elements for which the nitric-aqua regia digestion is possibly incomplete are: Al, Ba, Be, Ca, Cr, Ga, K, La, Mg, Na, Sr, Ti, Tl, W.

ANALYTICAL PROCEDURES

CHEMEX CODE	NUMBER SAMPLES	DESCRIPTION	METHOD	DETECTION LIMIT	UPPER LIMIT
100	82	Au ppb: Fuse 10 g sample	FA-AAS	5	10000
921	90	Al %: 32 element, soil & rock	ICP-AES	0.01	15.00
922	90	Ag ppm: 32 element, soil & rock	ICP-AES	0.2	200
923	90	As ppm: 32 element, soil & rock	ICP-AES	5	10000
924	90	Ba ppm: 32 element, soil & rock	ICP-AES	10	10000
925	90	Be ppm: 32 element, soil & rock	ICP-AES	0.5	100.0
926	90	Bi ppm: 32 element, soil & rock	ICP-AES	2	10000
927	90	Ca %: 32 element, soil & rock	ICP-AES	0.01	15.00
928	90	Cd ppm: 32 element, soil & rock	ICP-AES	0.5	100.0
929	90	Co ppm: 32 element, soil & rock	ICP-AES	1	10000
930	90	Cr ppm: 32 element, soil & rock	ICP-AES	1	10000
931	90	Cu ppm: 32 element, soil & rock	ICP-AES	1	10000
932	90	Fe %: 32 element, soil & rock	ICP-AES	0.01	15.00
933	90	Ga ppm: 32 element, soil & rock	ICP-AES	10	10000
951	90	Hg ppm: 32 element, soil & rock	ICP-AES	1	10000
934	90	K %: 32 element, soil & rock	ICP-AES	0.01	10.00
935	90	La ppm: 32 element, soil & rock	ICP-AES	10	10000
936	90	Mg %: 32 element, soil & rock	ICP-AES	0.01	15.00
937	90	Mn ppm: 32 element, soil & rock	ICP-AES	1	10000
938	90	Mo ppm: 32 element, soil & rock	ICP-AES	1	10000
939	90	Na %: 32 element, soil & rock	ICP-AES	0.01	5.00
940	90	Ni ppm: 32 element, soil & rock	ICP-AES	1	10000
941	90	P ppm: 32 element, soil & rock	ICP-AES	10	10000
942	90	Pb ppm: 32 element, soil & rock	ICP-AES	2	10000
943	90	Sb ppm: 32 element, soil & rock	ICP-AES	5	10000
958	90	Sc ppm: 32 elements, soil & rock	ICP-AES	1	100000
944	90	Sr ppm: 32 element, soil & rock	ICP-AES	1	10000
945	90	Ti %: 32 element, soil & rock	ICP-AES	0.01	5.00
946	90	Tl ppm: 32 element, soil & rock	ICP-AES	10	10000
947	90	U ppm: 32 element, soil & rock	ICP-AES	10	10000
948	90	V ppm: 32 element, soil & rock	ICP-AES	1	10000
949	90	W ppm: 32 element, soil & rock	ICP-AES	5	10000
950	90	Zn ppm: 32 element, soil & rock	ICP-AES	1	10000



Chemex Labs Ltd.

Analytical Chemists * Geochemists * Registered Assayers

212 BROOKSBANK AVE., NORTH VANCOUVER,
BRITISH COLUMBIA, CANADA V7J-2C1

PHONE (604) 984-0221

To: PACIFIC GEO-ROC EXPLORATION LTD.

256 - 409 GRANVILLE ST.
VANCOUVER, BC
V6C 1T2

Project: MOLY MAY

Comments: CC: PACIFIC GEO-ROC EXPL - ANYO CAMP

Page No. : 1-B
Tot. Pages: 3
Date : 05-JUL-88
Invoice #: I-8817779
P.O. #: NONE

CERTIFICATE OF ANALYSIS A8817779

SAMPLE DESCRIPTION	PREP CODE	Mo ppm	Na %	Ni ppm	P ppm	Pb ppm	Sb ppm	Sc ppm	Sr ppm	Ti %	Tl ppm	U ppm	V ppm	W ppm	Zn ppm
Z-2	202 238	1	< 0.01	1	240	8	< 5	1	4	0.08	< 10	< 10	17	< 5	7
Z-11 A	202 238	9	0.02	12	700	54	5	2	40	0.05	< 10	< 10	25	< 5	150
Z-11 B	202 238	9	< 0.01	< 1	440	8	< 5	< 1	7	0.05	< 10	< 10	13	< 5	14
Z-12	202 238	2	< 0.01	< 1	190	< 2	< 5	< 1	4	0.03	< 10	< 10	12	< 5	7
Z-14	202 238	1	< 0.01	< 1	170	2	< 5	< 1	3	0.06	< 10	< 10	8	< 5	5
Z-63	202 238	1	< 0.01	3	420	12	< 5	1	7	0.15	< 10	< 10	37	< 5	21
Z-90	202 238	2	< 0.01	< 1	360	30	< 5	< 1	3	0.27	< 10	< 10	24	< 5	19
Z-91	202 238	1	< 0.01	< 1	110	12	< 5	1	3	0.10	< 10	< 10	20	< 5	6
Z-92	202 238	1	0.01	4	370	6	5	< 1	30	0.03	< 10	< 10	7	< 5	72
Z-93	202 238	< 1	0.01	6	230	10	5	< 1	27	0.07	< 10	< 10	25	< 5	121
Z-94	202 238	2	< 0.01	6	300	8	< 5	< 1	6	0.30	< 10	< 10	153	< 5	46
Z-95	202 238	3	< 0.01	< 1	110	22	< 5	< 1	2	0.34	< 10	< 10	27	< 5	4
Z-100	202 238	4	< 0.01	< 1	300	32	< 5	< 1	3	0.27	< 10	< 10	25	< 5	7
Z-101	202 238	2	< 0.01	< 1	240	8	< 5	< 1	4	0.15	< 10	< 10	23	< 5	8
Z-102	202 238	2	< 0.01	1	460	22	< 5	< 1	4	0.10	< 10	< 10	15	< 5	23
Z-103	202 238	2	< 0.01	3	460	72	5	< 1	9	0.06	< 10	< 10	27	15	233
Z-104	202 238	6	< 0.01	2	1440	18	5	< 1	7	0.07	< 10	< 10	16	< 5	23
Z-105	202 238	14	< 0.01	2	810	26	< 5	< 1	4	0.20	< 10	< 10	22	< 5	12
Z-106	202 238	14	< 0.01	1	350	38	< 5	< 1	4	0.30	< 10	< 10	26	< 5	10
Z-107	202 238	10	< 0.01	53	500	20	< 5	3	7	0.14	< 10	< 10	59	< 5	101
Z-108	202 238	5	< 0.01	3	1240	20	< 5	< 1	9	0.08	< 10	< 10	19	< 5	29
Z-109	202 238	9	< 0.01	1	330	26	< 5	< 1	3	0.29	< 10	< 10	24	< 5	7
Z-110	202 238	3	0.01	5	690	64	< 5	< 1	12	0.02	< 10	< 10	12	< 5	126
Z-111	202 238	3	< 0.01	1	360	18	< 5	< 1	3	0.08	< 10	< 10	17	< 5	12
Z-112	202 238	12	< 0.01	9	910	14	< 5	1	7	0.12	< 10	< 10	40	< 5	33
Z-113	202 238	12	< 0.01	4	890	26	< 5	1	5	0.16	< 10	< 10	24	< 5	14
Z-114	202 238	12	< 0.01	6	1170	26	< 5	< 1	7	0.08	< 10	< 10	41	< 5	55
Z-115	202 238	17	< 0.01	4	1120	30	< 5	1	6	0.21	< 10	< 10	38	< 5	19
Z-116	202 238	4	0.01	5	1830	18	5	< 1	9	0.02	< 10	< 10	10	< 5	35
Z-117	202 238	7	0.01	15	520	22	< 5	1	7	0.24	< 10	< 10	27	< 5	39
Z-118	202 238	8	< 0.01	< 1	210	28	< 5	< 1	4	0.33	< 10	< 10	41	< 5	10
Z-119	202 238	6	< 0.01	< 1	200	16	< 5	< 1	4	0.29	< 10	< 10	38	< 5	11
Z-120	202 238	3	< 0.01	< 1	130	8	< 5	< 1	3	0.14	< 10	< 10	26	< 5	4
Z-121	202 238	5	0.01	5	1080	42	< 5	< 1	18	0.12	< 10	< 10	25	< 5	62
Z-122	202 238	5	< 0.01	7	1030	26	5	< 1	14	0.10	< 10	< 10	19	< 5	61
Z-123	202 238	14	< 0.01	8	350	28	< 5	2	7	0.34	< 10	< 10	69	< 5	32
Z-124	202 238	13	< 0.01	1	150	14	< 5	< 1	4	0.17	< 10	< 10	30	< 5	6
Z-125	202 238	17	< 0.01	< 1	150	12	< 5	1	4	0.23	< 10	< 10	46	< 5	14
Z-126	202 238	9	< 0.01	< 1	210	16	< 5	< 1	4	0.16	< 10	< 10	21	< 5	9
Z-127	202 238	8	< 0.01	< 1	240	22	< 5	1	4	0.23	< 10	< 10	31	< 5	10

CERTIFICATION :

BC 8



Chemex Labs Ltd.

Analytical Chemists • Geochemists • Registered Assayers

212 BROOKSBANK AVE., NORTH VANCOUVER,
BRITISH COLUMBIA, CANADA V7J-1C1

PHONE (604) 984-0221

To: PACIFIC GEO-ROC EXPLORATION LTD.

256 - 409 GRANVILLE ST.
VANCOUVER, BC
V6C 1T2

Project: MDLY-MAY

Comments: CC: PACIFIC GEO-ROC EXPL. LTD.

Page No. : 1-A

Tot. Pages: 2

Date : 4-JUL-88

Invoice #: I-8817786

P.O. #: NONE

CERTIFICATE OF ANALYSIS A8817786

SAMPLE DESCRIPTION	PREP CODE		Au ppb	Al %	Ag ppm	As ppm	Ba ppm	Be ppm	Bi ppm	Ca %	Cd ppm	Co ppm	Cr ppm	Cu ppm	Fe %	Ga ppm	Hg ppm	K %	La ppm	Mg %	Mn ppm
			FA+AA	%	ppm	ppm	ppm	ppm	ppm	%	ppm	ppm	ppm	ppm	%	ppm	ppm	%	ppm	%	ppm
1500E 2112S	202	217	70	0.19	< 0.2	< 5	10	< 0.5	6	0.01	0.5	1	7	174	0.29	< 10	1	0.01	< 10	< 0.01	109
1500E 2125S	202	217	20	0.65	< 0.2	20	20	< 0.5	< 2	0.01	< 0.5	1	10	43	0.95	< 10	1	0.03	< 10	0.04	33
1500E 2135S	202	217	< 5	4.57	< 0.2	15	140	1.0	< 2	0.14	0.5	30	119	98	5.70	< 10	1	0.14	20	0.99	2250
1500E 2150S	202	217	< 5	1.29	< 0.2	25	40	< 0.5	4	0.02	< 0.5	< 1	27	175	0.82	< 10	< 1	0.08	< 10	0.05	35
1500E 2163S	202	217	< 5	1.42	< 0.2	< 5	50	< 0.5	< 2	0.07	< 0.5	2	31	123	0.34	< 10	2	0.05	< 10	0.04	40
1500E 2175S	202	217	< 5	0.57	< 0.2	< 5	20	< 0.5	22	0.02	0.5	< 1	9	69	0.28	< 10	1	0.03	< 10	0.02	20
1500E 2185S	202	217	< 5	0.36	< 0.2	10	20	< 0.5	2	0.01	< 0.5	1	4	41	0.33	< 10	< 1	0.04	< 10	0.04	43
1500E 2212S	202	217	< 5	1.42	< 0.2	5	30	< 0.5	< 2	0.05	< 0.5	1	31	7	4.14	< 10	1	0.05	< 10	0.17	86
1500E 2237S	202	217	< 5	1.29	< 0.2	< 5	20	< 0.5	2	0.03	< 0.5	< 1	26	21	3.47	< 10	< 1	0.02	< 10	0.11	58
1500E 2263S	202	217	< 5	0.56	< 0.2	5	20	< 0.5	< 2	0.01	< 0.5	< 1	13	55	0.77	< 10	< 1	0.04	< 10	0.09	45
1500E 2300S	202	217	< 5	0.51	< 0.2	5	50	< 0.5	< 2	< 0.01	< 0.5	< 1	65	8	0.76	< 10	1	0.16	< 10	0.30	60
1500E 2312S	202	217	< 5	0.18	< 0.2	< 5	10	< 0.5	< 2	< 0.01	< 0.5	< 1	11	25	0.21	< 10	< 1	0.02	20	0.02	11
1500E 2325S	202	217	< 5	3.21	< 0.2	10	70	0.5	< 2	0.04	< 0.5	3	140	76	3.63	10	< 1	0.06	< 10	0.48	167
1500E 2362S	202	217	< 5	0.68	< 0.2	< 5	40	< 0.5	2	< 0.01	< 0.5	1	43	43	0.99	< 10	1	0.07	10	0.16	55
1500E 2375S	202	217	< 5	0.48	< 0.2	< 5	20	< 0.5	< 2	0.01	0.5	< 1	11	22	0.51	< 10	< 1	0.03	10	0.03	44
1500E 2387S	202	217	< 5	1.48	< 0.2	10	20	< 0.5	< 2	0.01	< 0.5	2	65	21	8.06	10	< 1	0.01	10	0.09	65
1500E 2475S	202	217	< 5	2.59	< 0.2	< 5	50	< 0.5	< 2	0.04	0.5	6	52	39	3.12	< 10	< 1	0.06	< 10	0.65	389
1500E 2488S	202	217	20	3.32	< 0.2	25	90	< 0.5	< 2	0.07	< 0.5	8	102	37	6.11	< 10	< 1	0.10	10	0.77	289
1500E 2500S	202	217	< 5	1.05	< 0.2	15	50	< 0.5	2	0.04	< 0.5	< 1	28	69	1.05	10	< 1	0.09	< 10	0.17	76
1500E 2512S	202	217	< 5	0.61	< 0.2	10	20	< 0.5	2	0.02	< 0.5	< 1	17	42	1.09	< 10	< 1	0.04	< 10	0.05	74
1500E 2525S	202	217	< 5	1.44	3.0	15	30	< 0.5	< 2	0.05	1.5	2	11	195	1.34	< 10	< 1	0.05	< 10	0.04	59
1500E 2538S	202	217	< 5	0.57	< 0.2	< 5	20	< 0.5	2	0.02	< 0.5	1	13	18	0.40	< 10	< 1	0.04	10	0.08	57
1500E 2552S	202	217	< 5	0.80	< 0.2	5	20	< 0.5	4	0.04	0.5	2	12	297	0.95	< 10	1	0.05	< 10	0.05	32
1500E 2568S	202	217	< 5	4.32	< 0.2	40	90	0.5	< 2	0.03	< 0.5	10	104	98	5.69	< 10	< 1	0.09	< 10	0.88	429
1500E 2575S	202	217	< 5	0.70	< 0.2	5	10	< 0.5	< 2	0.01	< 0.5	< 1	18	7	2.33	< 10	< 1	0.02	10	0.05	37
1500E 2583S	202	217	< 5	0.74	< 0.2	15	30	< 0.5	< 2	0.01	< 0.5	< 1	19	20	0.35	< 10	< 1	0.05	< 10	0.13	32
1500E 2600S	202	217	< 5	1.65	< 0.2	5	20	< 0.5	< 2	0.02	< 0.5	1	73	52	6.19	< 10	< 1	0.02	< 10	0.13	97
1500E 2612S	202	217	< 5	1.66	< 0.2	40	60	< 0.5	2	0.03	< 0.5	< 1	34	96	1.38	10	< 1	0.11	< 10	0.19	116
1500E 2625S	202	217	< 5	1.11	0.4	20	50	< 0.5	2	0.07	1.0	2	11	272	1.16	< 10	< 1	0.10	< 10	0.04	24
1500E 2638S	202	217	5	0.46	< 0.2	15	50	< 0.5	< 2	0.18	1.0	3	4	642	0.70	< 10	< 1	0.05	< 10	0.07	35
1500E 2650S	202	217	< 5	1.07	< 0.2	10	40	< 0.5	2	0.02	< 0.5	< 1	20	67	0.37	10	< 1	0.06	< 10	0.06	35
1500E 2663S	202	217	< 5	1.34	< 0.2	20	40	< 0.5	< 2	0.02	< 0.5	< 1	23	193	0.81	< 10	< 1	0.06	< 10	0.04	38
1500E 2675S	202	217	< 5	0.53	< 0.2	20	20	< 0.5	< 2	0.02	< 0.5	< 1	11	94	0.58	< 10	< 1	0.04	< 10	0.02	25
1500E 2683S	202	217	< 5	0.66	< 0.2	10	20	< 0.5	2	0.04	0.5	< 1	5	313	0.47	< 10	< 1	0.04	< 10	0.01	20
1500E 2700S	202	217	15	0.23	< 0.2	5	20	< 0.5	< 2	0.02	0.5	< 1	4	529	0.56	< 10	< 1	0.02	< 10	0.01	59
1500E 2738S	202	217	< 5	0.12	< 0.2	10	< 10	< 0.5	2	< 0.01	< 0.5	< 1	2	122	0.18	< 10	< 1	0.01	< 10	< 0.01	111
1500E 2750S	202	217	< 5	0.17	< 0.2	10	< 10	< 0.5	2	0.01	< 0.5	< 1	6	6	0.38	< 10	< 1	0.01	< 10	< 0.01	39
1500E 2763S	202	217	< 5	0.24	< 0.2	5	20	< 0.5	4	0.07	< 0.5	< 1	20	42	0.28	< 10	< 1	0.03	< 10	0.09	33
1500E 2777S	202	217	< 5	0.16	< 0.2	< 5	30	< 0.5	< 2	0.42	1.0	< 1	2	88	0.12	< 10	< 1	0.02	< 10	0.03	29
1500E 2783S	202	217	< 5	0.89	< 0.2	5	30	< 0.5	< 2	0.04	1.0	< 1	11	161	0.11	< 10	< 1	0.03	< 10	0.01	14

CERTIFICATION :



Chemex Labs Ltd.

Analytical Chemists • Geochemists • Registered Assayers
 212 BROOKSBANK AVE., NORTH VANCOUVER,
 BRITISH COLUMBIA, CANADA V7J-2C1
 PHONE (604) 984-0221

To: PACIFIC GEO-ROC EXPLORATION LTD.

256 - 409 GRANVILLE ST.
 VANCOUVER, BC
 V6C 1T2

Project: MOLY-MAY

Comments: CC: PACIFIC GEO-ROC EXPL. LTD.

Page No. : 1-B
 Tot. Pages: 2
 Date : 4-JUL-88
 Invoice # : I-8817786
 P.O. # : NONE

CERTIFICATE OF ANALYSIS A8817786

SAMPLE DESCRIPTION	PREP CODE		Mo	Na	Ni	P	Pb	Sb	Sc	Sr	Ti	Tl	U	V	W	Zn
			ppm	%	ppm	ppm	ppm	ppm	ppm	ppm	%	ppm	ppm	ppm	ppm	ppm
1500E 2112S	202	217	9	0.01	< 1	190	30	< 5	< 1	3	0.15	< 10	< 10	9	10	22
1500E 2123S	202	217	1	0.01	1	160	2	< 5	1	4	0.07	< 10	< 10	49	< 5	16
1500E 2135S	202	217	7	0.01	63	880	18	< 5	13	12	0.30	< 10	< 10	114	10	145
1500E 2150S	202	217	10	0.01	2	770	26	< 5	1	6	0.19	< 10	< 10	47	< 5	18
1500E 2163S	202	217	6	0.01	7	510	26	< 5	1	15	0.20	< 10	< 10	25	< 5	20
1500E 2173S	202	217	7	< 0.01	1	390	18	< 5	< 1	5	0.18	< 10	< 10	19	< 5	9
1500E 2185S	202	217	8	0.01	1	130	10	< 5	< 1	3	0.08	< 10	< 10	14	< 5	9
1500E 2212S	202	217	9	0.01	7	180	6	< 5	1	8	0.24	< 10	< 10	147	< 5	23
1500E 2237S	202	217	6	< 0.01	4	170	14	< 5	1	3	0.32	< 10	< 10	124	< 5	26
1500E 2263S	202	217	6	< 0.01	2	240	20	< 5	1	2	0.21	< 10	< 10	44	< 5	13
1500E 2300S	202	217	< 1	0.01	7	60	< 2	< 5	1	< 1	0.15	< 10	< 10	43	< 5	21
1500E 2312S	202	217	25	0.01	3	140	< 2	< 5	< 1	1	0.19	< 10	< 10	29	< 5	5
1500E 2323S	202	217	122	0.01	23	500	28	< 5	4	6	0.38	< 10	< 10	123	< 5	62
1500E 2362S	202	217	6	0.01	8	220	8	< 5	1	2	0.33	< 10	< 10	50	< 5	15
1500E 2373S	202	217	2	< 0.01	2	100	12	< 5	< 1	3	0.14	< 10	< 10	39	< 5	10
1500E 2387S	202	217	5	0.01	1	320	12	< 5	2	2	0.24	< 10	< 10	221	5	23
1500E 2473S	202	217	3	0.01	21	240	14	< 5	3	6	0.10	< 10	< 10	63	5	64
1500E 2488S	202	217	4	0.01	27	310	18	< 5	6	9	0.16	< 10	< 10	108	5	76
1500E 2500S	202	217	3	0.01	3	330	36	< 5	1	5	0.22	< 10	< 10	66	< 5	17
1500E 2512S	202	217	3	0.01	1	210	32	< 5	< 1	4	0.18	< 10	< 10	68	< 5	10
1500E 2573S	202	217	3	0.01	3	1060	6	< 5	< 1	10	0.03	< 10	< 10	14	< 5	33
1500E 2538S	202	217	2	0.01	< 1	110	18	< 5	< 1	4	0.14	< 10	< 10	29	< 5	9
1500E 2552S	202	217	3	0.01	1	550	34	< 5	< 1	7	0.06	< 10	< 10	27	< 5	23
1500E 2568S	202	217	2	0.01	42	450	12	< 5	7	6	0.11	< 10	< 10	104	< 5	115
1500E 2573S	202	217	1	< 0.01	< 1	260	2	< 5	< 1	3	0.14	< 10	< 10	90	15	14
1500E 2583S	202	217	1	0.01	< 1	120	10	< 5	< 1	3	0.13	< 10	< 10	27	10	6
1500E 2600S	202	217	2	< 0.01	2	340	14	< 5	2	4	0.25	< 10	< 10	146	20	28
1500E 2612S	202	217	3	0.01	3	580	26	< 5	2	6	0.16	< 10	< 10	67	5	29
1500E 2623S	202	217	1	0.01	< 1	1410	8	< 5	< 1	14	0.04	< 10	< 10	16	10	36
1500E 2638S	202	217	1	0.01	6	660	26	< 5	< 1	37	0.01	< 10	< 10	4	15	68
1500E 2650S	202	217	2	0.01	< 1	400	40	< 5	< 1	5	0.18	< 10	< 10	33	10	13
1500E 2663S	202	217	2	0.01	< 1	650	28	< 5	1	6	0.21	< 10	< 10	31	10	17
1500E 2673S	202	217	< 1	0.01	< 1	220	16	< 5	< 1	4	0.11	< 10	< 10	19	10	11
1500E 2683S	202	217	< 1	0.01	< 1	850	16	< 5	< 1	6	0.03	< 10	< 10	5	< 5	25
1500E 2700S	202	217	< 1	0.01	< 1	260	36	< 5	< 1	5	0.08	< 10	< 10	7	10	35
1500E 2738S	202	217	< 1	0.01	< 1	150	4	< 5	< 1	1	0.04	< 10	< 10	3	10	12
1500E 2750S	202	217	1	< 0.01	< 1	70	6	< 5	< 1	1	0.14	< 10	< 10	36	10	3
1500E 2763S	202	217	< 1	0.01	< 1	180	6	< 5	< 1	14	0.15	< 10	< 10	28	5	24
1500E 2777S	202	217	< 1	0.01	< 1	240	< 2	< 5	< 1	46	< 0.01	< 10	< 10	1	< 5	76
1500E 2783S	202	217	1	0.01	< 1	650	10	< 5	< 1	7	0.09	< 10	< 10	16	5	15

CERTIFICATION :



Chemex Labs Ltd.

Analytical Chemists • Geochemists • Registered Assayers
212 BROOKSBANK AVE., NORTH VANCOUVER,
BRITISH COLUMBIA, CANADA V7J-2C1
PHONE (604) 984-0221

To: PACIFIC GEO-ROC EXPLORATION LTD.

256 - 409 GRANVILLE ST.
VANCOUVER, BC
V6C 1T2

Project: MOLY-MAY
Comments: CC: PACIFIC GEO-ROC EXPL LTD

Page No.: 2-A
Tot. Pages: 2
Date: 4-JUL-88
Invoice #: I-8817786
P.O. #: NONE

CERTIFICATE OF ANALYSIS A8817786

SAMPLE DESCRIPTION	PREP CODE		Au ppb	Al %	Ag ppm	As ppm	Ba ppm	Be ppm	Bi ppm	Ca %	Cd ppm	Co ppm	Cr ppm	Cu ppm	Fe %	Ga ppm	Hg ppm	K %	La ppm	Mg %	Mn ppm
			FA+AA	%	ppm	ppm	ppm	ppm	ppm	%	ppm	ppm	ppm	ppm	%	ppm	ppm	%	ppm	%	ppm
1500E 2800S	202	217	10	0.94	< 0.2	30	60	< 0.5	< 2	0.07	0.5	1	17	294	1.44	< 10	< 1	0.04	< 10	0.04	56
B-C 2850S	202	217	15	0.11	< 0.2	< 5	80	< 0.5	< 2	0.29	3.5	2	1	727	0.63	< 10	< 1	0.06	< 10	0.10	623
1500E 2868S	202	217	< 5	0.27	< 0.2	5	20	< 0.5	< 2	0.05	< 0.5	< 1	8	59	0.39	< 10	< 1	0.03	< 10	0.02	57



Chemex Labs Ltd.

Analytical Chemists • Geochemists • Registered Assayers
212 BROOKSBANK AVE., NORTH VANCOUVER,
BRITISH COLUMBIA, CANADA V7J-2C1
PHONE (604) 984-0221

To: PACIFIC GEO-ROC EXPLORATION LTD.

256 - 409 GRANVILLE ST.
VANCOUVER, BC
V6C 1T2

Project: MOLY-MAY
Comments: CC: PACIFIC GEO-ROC EXPL LTD.

Page No.: 2-B
Tot. Pages: 2
Date: 4-JUL-88
Invoice #: I-8817786
P.O. #: NONE

CERTIFICATE OF ANALYSIS A8817786

SAMPLE DESCRIPTION	PREP CODE		Mo ppm	Na %	Ni ppm	P ppm	Pb ppm	Sb ppm	Sc ppm	Sr ppm	Ti %	Tl ppm	U ppm	V ppm	W ppm	Zn ppm
			ppm	%	ppm	ppm	ppm	ppm	ppm	ppm	%	ppm	ppm	ppm	ppm	ppm
1500E 2800S	202	217	2	0.01	3	620	40	< 5	< 1	12	0.09	< 10	< 10	38	< 5	17
B-C 2850S	202	217	1	0.02	2	910	54	< 5	< 1	32	< 0.01	< 10	< 10	3	< 5	94
1500E 2868S	202	217	< 1	0.01	< 1	190	28	< 5	< 1	6	0.24	< 10	< 10	20	15	10



Chemex Labs Ltd.

Analytical Chemists * Geochemists * Registered Assayers

212 BROOKSBANK AVE., NORTH VANCOUVER,
BRITISH COLUMBIA, CANADA V7J-1C1

PHONE (604) 984-0221

To: PACIFIC GEO-ROC EXPLORATION LTD.

256 - 409 GRANVILLE ST.
VANCOUVER, BC
V6C 1T2

Project: MOLY MAY

Comments: CC: PACIFIC GEO-ROC EXPL - ANYO CAMP

Page No. : 2-A

Tot. Pages: 3

Date : 05-JUL-88

Invoice #: I-8817779

P.O. #: NONE

CERTIFICATE OF ANALYSIS A8817779

SAMPLE DESCRIPTION	PREP CODE	Au ppb FA+AA	Al %	Ag ppm	As ppm	Ba ppm	Be ppm	Bi ppm	Ca %	Cd ppm	Co ppm	Cr ppm	Cu ppm	Fe %	Ga ppm	Hg ppm	K %	La ppm	Mg %	Mn ppm
Z-128	202 238	< 5	0.46	< 0.2	< 5	20	< 0.5	4	0.01	< 0.5	< 1	11	23	0.24	10	< 1	0.04	< 10	0.04	16
Z-129	202 238	< 5	0.51	< 0.2	< 5	30	< 0.5	6	0.01	< 0.5	< 1	9	59	0.49	10	< 1	0.05	< 10	0.05	28
Z-130	202 238	< 5	0.41	< 0.2	< 5	10	< 0.5	6	< 0.01	< 0.5	< 1	7	26	0.17	< 10	< 1	0.02	< 10	0.01	10
Z-131	202 238	< 5	0.32	< 0.2	15	10	< 0.5	< 2	< 0.01	< 0.5	< 1	7	23	1.17	< 10	< 1	0.01	< 10	0.01	19
Z-132	202 238	< 5	2.71	< 0.2	< 5	20	< 0.5	< 2	0.01	< 0.5	4	117	31	11.35	20	< 1	0.02	< 10	0.18	86
Z-133	202 238	< 5	0.75	< 0.2	5	30	< 0.5	8	0.06	< 0.5	< 1	7	231	0.65	< 10	< 1	0.03	< 10	0.02	24
Z-134	202 238	< 5	0.57	< 0.2	< 5	20	< 0.5	12	0.01	< 0.5	< 1	12	33	0.22	10	< 1	0.04	< 10	0.01	13
Z-135	202 238	< 5	0.70	< 0.2	5	20	< 0.5	10	0.03	< 0.5	< 1	10	203	0.32	10	< 1	0.05	< 10	0.02	15
Z-136	202 238	< 5	0.62	< 0.2	10	20	< 0.5	12	0.01	< 0.5	< 1	12	46	0.24	10	< 1	0.04	< 10	0.02	15
Z-137	202 238	5	1.20	< 0.2	< 5	30	< 0.5	< 2	0.03	0.5	< 1	19	114	0.21	< 10	< 1	0.04	< 10	0.02	14
Z-138	202 238	< 5	1.26	< 0.2	< 5	40	< 0.5	< 2	0.02	< 0.5	< 1	34	59	0.72	< 10	< 1	0.07	< 10	0.29	75
Z-139	202 238	< 5	1.59	< 0.2	< 5	50	< 0.5	< 2	0.03	< 0.5	< 1	44	42	1.14	< 10	< 1	0.07	< 10	0.49	117
Z-140	202 238	15	0.77	< 0.2	5	30	< 0.5	2	0.10	0.5	< 1	7	279	0.89	< 10	< 1	0.02	< 10	0.02	37
Z-141	202 238	< 5	1.04	< 0.2	5	30	< 0.5	4	0.02	< 0.5	< 1	19	50	0.24	10	1	0.05	< 10	0.03	23
Z-142	202 238	< 5	1.44	< 0.2	< 5	10	< 0.5	< 2	0.02	< 0.5	< 1	14	22	0.32	< 10	< 1	< 0.01	< 10	0.01	10
Z-143	217 238	< 5	0.92	< 0.2	< 5	20	< 0.5	< 2	0.06	1.5	< 1	15	81	0.27	< 10	1	0.04	< 10	0.02	49
Z-144	202 238	< 5	0.56	< 0.2	< 5	30	< 0.5	2	0.03	0.5	< 1	15	56	0.10	< 10	< 1	0.04	< 10	0.01	27
Z-145	202 238	15	0.66	< 0.2	5	30	< 0.5	< 2	0.08	0.5	< 1	6	391	0.43	< 10	< 1	0.02	< 10	0.02	74
Z-147	202 238	< 5	0.30	< 0.2	< 5	20	< 0.5	2	0.01	< 0.5	< 1	7	70	0.12	< 10	1	0.03	< 10	0.01	11
Z-148	202 238	< 5	0.36	< 0.2	< 5	20	< 0.5	< 2	0.01	< 0.5	< 1	11	28	0.08	< 10	< 1	0.04	< 10	0.01	15
Z-149	202 238	15	0.24	< 0.2	5	10	< 0.5	2	0.03	< 0.5	< 1	4	290	0.32	< 10	< 1	0.02	10	0.01	30
Z-150	202 238	10	0.46	< 0.2	< 5	30	< 0.5	< 2	0.03	< 0.5	< 1	10	62	0.12	< 10	< 1	0.04	< 10	0.01	20
Z-152	202 238	< 5	0.73	< 0.2	10	30	< 0.5	< 2	0.02	< 0.5	< 1	21	24	0.46	10	< 1	0.07	< 10	0.07	32
Z-153	202 238	< 5	0.46	< 0.2	10	50	< 0.5	< 2	0.25	1.0	< 1	6	213	0.51	< 10	1	0.06	< 10	0.06	27
Z-154	202 238	20	0.48	1.0	< 5	10	< 0.5	< 2	0.26	3.0	< 1	5	934	1.15	< 10	1	0.02	< 10	0.04	106
Z-155	202 238	< 5	0.61	< 0.2	< 5	30	< 0.5	< 2	0.04	< 0.5	< 1	14	40	0.38	< 10	< 1	0.06	< 10	0.06	38
Z-156	202 238	< 5	0.97	< 0.2	5	40	< 0.5	< 2	0.02	< 0.5	2	32	52	1.58	10	< 1	0.08	< 10	0.16	97
Z-157	202 238	< 5	0.81	< 0.2	< 5	30	< 0.5	< 2	0.03	< 0.5	< 1	21	38	0.69	10	< 1	0.08	10	0.12	45
Z-158	202 238	< 5	1.06	< 0.2	< 5	70	< 0.5	< 2	0.03	< 0.5	< 1	20	27	0.46	< 10	< 1	0.12	< 10	0.06	30
Z-159	202 238	15	0.16	0.2	< 5	120	< 0.5	< 2	0.24	4.5	< 1	3	676	0.34	< 10	< 1	0.03	< 10	0.05	616
Z-160	202 238	< 5	0.51	< 0.2	5	30	< 0.5	< 2	0.02	< 0.5	< 1	13	31	0.48	< 10	1	0.03	< 10	0.04	25
Z-161	202 238	< 5	0.74	< 0.2	< 5	40	< 0.5	< 2	0.02	< 0.5	< 1	16	46	0.98	< 10	2	0.06	< 10	0.14	50
Z-162	202 238	< 5	1.04	< 0.2	< 5	80	< 0.5	< 2	0.02	< 0.5	< 1	23	75	0.44	10	< 1	0.07	< 10	0.06	39
Z-163	202 238	35	0.90	1.2	10	40	< 0.5	< 2	0.06	2.5	4	8	469	1.39	< 10	< 1	0.06	< 10	0.03	40
Z-164	202 238	< 5	0.86	< 0.2	< 5	40	< 0.5	< 2	0.02	< 0.5	< 1	18	57	0.79	10	< 1	0.07	< 10	0.04	23
Z-165	202 238	20	0.43	0.6	< 5	60	< 0.5	2	0.29	2.5	< 1	10	1055	1.36	< 10	< 1	0.05	< 10	0.10	57
Z-166	202 238	5	1.06	0.2	30	70	< 0.5	< 2	0.06	0.5	4	25	258	2.15	< 10	< 1	0.09	< 10	0.17	78
Z-167	202 238	< 5	0.96	< 0.2	< 5	30	< 0.5	< 2	< 0.01	< 0.5	< 1	19	16	0.22	< 10	< 1	0.05	< 10	0.04	17
Z-168	202 238	< 5	1.09	< 0.2	< 5	60	< 0.5	< 2	0.04	< 0.5	< 1	25	77	0.43	< 10	< 1	0.10	< 10	0.09	37
Z-169	202 238	< 5	0.90	< 0.2	< 5	40	< 0.5	< 2	0.01	< 0.5	< 1	24	43	0.56	< 10	< 1	0.05	< 10	0.05	18

CERTIFICATION :



Chemex Labs Ltd.

Analytical Chemists * Geochemists * Registered Assayers
 212 BROOKSBANK AVE., NORTH VANCOUVER,
 BRITISH COLUMBIA, CANADA V7J-2C1
 PHONE (604) 984-0221

To: PACIFIC GEO-ROC EXPLORATION LTD.

256 - 409 GRANVILLE ST.
 VANCOUVER, BC
 V6C 1T2

Project: MOLY MAY

Comments: CC: PACIFIC GEO-ROC EXPL - ANYO CAMP

Page No. : 2-B
 Tot. Pages: 3
 Date : 05-JUL-88
 Invoice #: I-8817779
 P.O. #: NONE

CERTIFICATE OF ANALYSIS A8817779

SAMPLE DESCRIPTION	PREP CODE		Mb	Na	Ni	P	Pb	Sb	Sc	Sr	Ti	Tl	U	V	W	Zn
			ppm	%	ppm	ppm	ppm	ppm	ppm	ppm	%	ppm	ppm	ppm	ppm	ppm
Z-128	202	238	2 < 0.01	< 1	130	28	< 5	< 1	2	0.20	< 10	< 10	28	< 5	6	
Z-129	202	238	2 < 0.01	< 1	230	24	< 5	< 1	2	0.22	< 10	< 10	34	< 5	9	
Z-130	202	238	2 < 0.01	< 1	100	28	< 5	< 1	1	0.17	< 10	< 10	21	< 5	3	
Z-131	202	238	1 < 0.01	< 1	110	< 2	< 5	< 1	1	0.03	< 10	< 10	70	< 5	14	
Z-132	202	238	6 < 0.01	6	460	< 2	< 5	3	2	0.35	< 10	< 10	239	< 5	40	
Z-133	202	238	1 < 0.01	3	440	22	< 5	< 1	10	0.12	< 10	< 10	17	< 5	25	
Z-134	202	238	2 < 0.01	< 1	150	38	< 5	< 1	2	0.28	< 10	< 10	29	< 5	5	
Z-135	202	238	3 < 0.01	< 1	490	22	< 5	< 1	5	0.17	< 10	< 10	26	< 5	22	
Z-136	202	238	2 < 0.01	1	230	32	< 5	< 1	3	0.21	< 10	< 10	26	< 5	6	
Z-137	202	238	2 < 0.01	2	490	18	< 5	< 1	7	0.07	< 10	< 10	18	< 5	13	
Z-138	202	238	2 < 0.01	9	240	12	< 5	1	5	0.08	< 10	< 10	27	< 5	22	
Z-139	202	238	< 1 < 0.01	16	180	14	< 5	2	5	0.07	< 10	< 10	34	< 5	34	
Z-140	202	238	2 < 0.01	3	710	26	< 5	< 1	16	0.03	< 10	< 10	11	< 5	29	
Z-141	202	238	2 < 0.01	1	270	24	< 5	< 1	5	0.14	< 10	< 10	27	< 5	11	
Z-142	202	238	< 1 0.01	1	710	4	< 5	< 1	3	0.02	< 10	< 10	8	< 5	7	
Z-143	217	238	2 0.01	2	1120	6	< 5	< 1	8	0.03	< 10	< 10	8	< 5	23	
Z-144	202	238	3 < 0.01	1	300	10	< 5	< 1	5	0.08	< 10	< 10	11	< 5	12	
Z-145	202	238	2 0.01	1	990	16	5	< 1	10	0.02	< 10	< 10	5	< 5	33	
Z-147	202	238	1 < 0.01	< 1	240	6	< 5	< 1	3	0.04	< 10	< 10	6	< 5	5	
Z-148	202	238	1 < 0.01	< 1	120	8	< 5	< 1	3	0.07	< 10	< 10	7	< 5	4	
Z-149	202	238	13 < 0.01	1	230	32	< 5	< 1	4	0.07	< 10	< 10	5	< 5	26	
Z-150	202	238	1 < 0.01	< 1	290	8	< 5	< 1	4	0.05	< 10	< 10	9	< 5	8	
Z-152	202	238	1 < 0.01	1	170	10	< 5	1	4	0.13	< 10	< 10	38	< 5	7	
Z-153	202	238	< 1 0.01	4	480	10	< 5	< 1	24	0.03	< 10	< 10	15	< 5	67	
Z-154	202	238	1 0.01	3	530	34	5	< 1	31	0.02	< 10	< 10	11	< 5	155	
Z-155	202	238	1 < 0.01	< 1	150	10	< 5	1	7	0.13	< 10	< 10	28	< 5	12	
Z-156	202	238	1 < 0.01	3	260	18	< 5	2	5	0.32	< 10	< 10	79	< 5	16	
Z-157	202	238	2 < 0.01	1	250	16	< 5	1	4	0.26	< 10	< 10	57	< 5	11	
Z-158	202	238	3 < 0.01	2	170	16	< 5	1	6	0.09	< 10	< 10	41	< 5	7	
Z-159	202	238	< 1 < 0.01	2	350	34	< 5	< 1	45	0.06	< 10	< 10	9	< 5	96	
Z-160	202	238	1 < 0.01	1	90	4	< 5	< 1	5	0.16	< 10	< 10	44	< 5	12	
Z-161	202	238	< 1 < 0.01	3	220	12	< 5	1	4	0.07	< 10	< 10	28	< 5	13	
Z-162	202	238	2 < 0.01	2	250	20	< 5	1	5	0.21	< 10	< 10	47	< 5	13	
Z-163	202	238	2 < 0.01	6	970	26	< 5	< 1	11	0.04	< 10	< 10	16	< 5	81	
Z-164	202	238	2 < 0.01	< 1	320	16	5	1	5	0.11	< 10	< 10	37	< 5	9	
Z-165	202	238	1 < 0.01	4	410	40	5	< 1	30	0.05	< 10	< 10	32	< 5	117	
Z-166	202	238	2 0.01	7	570	26	5	1	12	0.12	< 10	< 10	67	< 5	42	
Z-167	202	238	1 < 0.01	1	160	20	< 5	1	2	0.14	< 10	< 10	34	< 5	5	
Z-168	202	238	1 0.01	4	300	20	< 5	1	7	0.07	< 10	< 10	22	< 5	14	
Z-169	202	238	1 < 0.01	1	110	22	< 5	1	3	0.12	< 10	< 10	51	< 5	9	

CERTIFICATION :



Chemex Labs Ltd.

Analytical Chemists * Geochemists * Registered Assayers
 212 BROOKSBANK AVE., NORTH VANCOUVER,
 BRITISH COLUMBIA, CANADA V7J-2C1
 PHONE (604) 984-0221

To: PACIFIC GEO-ROC EXPLORATION LTD.

256 - 409 GRANVILLE ST.
 VANCOUVER, BC
 V6C 1T2

Project: MOLY MAY

Comments: CC: PACIFIC GEO-ROC EXPL - ANYO CAMP

Page No. : 3-B
 Tot. Pages: 3
 Date : 05-JUL-88
 Invoice # : I-8817779
 P.O. # : NONE

CERTIFICATE OF ANALYSIS A8817779

SAMPLE DESCRIPTION	PREP CODE		Mo	Na	Ni	P	Pb	Sb	Sc	Sr	Ti	Tl	U	V	W	Zn
			ppm	%	ppm	ppm	ppm	ppm	ppm	ppm	%	ppm	ppm	ppm	ppm	ppm
Z-170	202	238	1	0.01	2	560	4	< 5	< 1	5	0.06	< 10	< 10	24	< 5	13
Z-171	202	238	< 1	0.01	5	550	42	< 5	1	22	0.05	< 10	< 10	18	< 5	34
Z-172	202	238	1	0.01	6	490	24	< 5	1	17	0.08	< 10	< 10	33	< 5	18
Z-173	202	238	2	0.02	4	580	32	< 5	< 1	31	0.04	< 10	< 10	12	< 5	62
Z-174	202	238	< 1	0.02	1	460	16	< 5	< 1	17	< 0.01	< 10	< 10	2	< 5	104
Z-175	202	238	1	0.01	4	720	14	< 5	< 1	11	0.04	< 10	< 10	21	< 5	11
Z-176	202	238	2	0.01	5	230	16	< 5	2	8	0.08	< 10	< 10	67	< 5	17
Z-177	202	238	1	0.01	17	450	8	< 5	3	8	0.08	< 10	< 10	97	< 5	43
Z-1310	202	238	6	0.01	1	470	24	< 5	< 1	16	0.02	< 10	< 10	6	< 5	41
Z-1320	202	238	< 1	< 0.01	< 1	110	10	< 5	< 1	1	0.23	< 10	< 10	11	< 5	6

D-30

CERTIFICATION :



Chemex Labs Ltd.

Analytical Chemists * Geochemists * Registered Assayers

212 BROOKSBANK AVE., NORTH VANCOUVER,
BRITISH COLUMBIA, CANADA V7J-2C1

PHONE (604) 984-0221

To: PACIFIC GEO-ROC EXPLORATION LTD.

256 - 409 GRANVILLE ST.
VANCOUVER, BC
V6C 1T2

Project: MOLY MAY

Comments: CC: PACIFIC GEO-ROC EXPL - ANYO CAMP

Page No. : 3-A

Tot. Pages: 3

Date : 05-JUL-88

Invoice #: I-8817779

P.O. #: NONE

CERTIFICATE OF ANALYSIS A8817779

SAMPLE DESCRIPTION	PREP CODE		Au ppb	Al %	Ag ppm	As ppm	Ba ppm	Be ppm	Bi ppm	Ca %	Cd ppm	Co ppm	Cr ppm	Cu ppm	Fe %	Ga ppm	Hg ppm	K %	La ppm	Mg %	Mn ppm
			FA+AA	%	ppm	ppm	ppm	ppm	ppm	%	ppm	ppm	ppm	ppm	%	ppm	ppm	%	ppm	%	ppm
Z-170	202	238	< 5	1.14	< 0.2	15	30	< 0.5	< 2	0.02	< 0.5	< 1	20	114	0.96	< 10	< 1	0.04	< 10	0.04	17
Z-171	202	238	10	0.93	< 0.2	< 5	80	< 0.5	< 2	0.15	1.0	1	16	583	1.09	< 10	< 1	0.06	< 10	0.05	34
Z-172	202	238	< 5	1.28	< 0.2	< 5	100	< 0.5	< 2	0.12	0.5	< 1	30	70	0.55	< 10	< 1	0.11	< 10	0.08	44
Z-173	202	238	< 5	0.56	< 0.2	< 5	60	< 0.5	< 2	0.32	2.0	1	10	690	0.66	< 10	< 1	0.07	< 10	0.06	79
Z-174	202	238	15	0.12	< 0.2	< 5	20	< 0.5	< 2	0.34	1.5	< 1	< 1	581	0.41	< 10	< 1	0.03	< 10	0.05	38
Z-175	202	238	5	1.13	< 0.2	< 5	50	< 0.5	< 2	0.07	0.5	< 1	20	121	0.35	< 10	< 1	0.06	< 10	0.03	17
Z-176	202	238	< 5	1.42	< 0.2	10	110	< 0.5	< 2	0.04	< 0.5	< 1	36	30	1.62	< 10	< 1	0.14	< 10	0.12	53
Z-177	202	238	< 5	1.91	< 0.2	5	110	0.5	< 2	0.04	0.5	4	51	110	3.17	< 10	< 1	0.17	< 10	0.34	133
Z-1310	202	238	5	0.58	< 0.2	< 5	40	< 0.5	< 2	0.14	0.5	< 1	5	289	0.41	< 10	< 1	0.03	< 10	0.03	58
Z-1320	202	238	100	0.25	< 0.2	< 5	20	< 0.5	< 2	< 0.01	< 0.5	< 1	8	95	0.10	< 10	< 1	0.01	< 10	< 0.01	15



Chemex Labs Ltd.

Analytical Chemists * Geochemists * Registered Assayers

212 BROOKSBANK AVE., NORTH VANCOUVER,
BRITISH COLUMBIA, CANADA V7J-2C1

PHONE (604) 984-0221

To: PACIFIC GEO-ROC EXPLORATION LTD.

256 - 409 GRANVILLE ST.
VANCOUVER, BC
V6C 1T2

Project: MOLY MAY

Comments: CC: PACIFIC GEO-ROC EXPL - ANYO CAMP

Page No. : 3-B

Tot. Pages: 3

Date : 05-JUL-88

Invoice #: I-8817779

P.O. #: NONE

CERTIFICATE OF ANALYSIS A8817779

SAMPLE DESCRIPTION	PREP CODE		Mo ppm	Na %	Ni ppm	P ppm	Pb ppm	Sb ppm	Sc ppm	Sr ppm	Ti %	Ti ppm	U ppm	V ppm	W ppm	Zn ppm
			ppm	%	ppm	ppm	ppm	ppm	ppm	ppm	%	ppm	ppm	ppm	ppm	ppm
Z-170	202	238	1	0.01	2	560	4	< 5	< 1	5	0.06	< 10	< 10	24	< 5	13
Z-171	202	238	< 1	0.01	5	550	42	< 5	1	22	0.05	< 10	< 10	18	< 5	34
Z-172	202	238	1	0.01	6	490	24	< 5	1	17	0.08	< 10	< 10	33	< 5	18
Z-173	202	238	2	0.02	4	580	32	< 5	< 1	31	0.04	< 10	< 10	12	< 5	62
Z-174	202	238	< 1	0.02	1	460	16	< 5	< 1	17	< 0.01	< 10	< 10	2	< 5	104
Z-175	202	238	1	0.01	4	720	14	< 5	< 1	11	0.04	< 10	< 10	21	< 5	11
Z-176	202	238	2	0.01	5	230	16	< 5	2	8	0.08	< 10	< 10	67	< 5	17
Z-177	202	238	1	0.01	17	450	8	< 5	3	8	0.08	< 10	< 10	97	< 5	43
Z-1310	202	238	6	0.01	1	470	24	< 5	< 1	16	0.02	< 10	< 10	6	< 5	41
Z-1320	202	238	< 1	< 0.01	< 1	110	10	< 5	< 1	1	0.23	< 10	< 10	11	< 5	6

D-3C



Chemex Labs Ltd.

Analytical Chemists * Geochemists * Registered Assayers
 212 BROOKSBANK AVE., NORTH VANCOUVER,
 BRITISH COLUMBIA, CANADA V7J-2C1
 PHONE (604) 984-0221

To: PACIFIC GEO-ROC EXPLORATION LTD.

256 - 409 GRANVILLE ST.
 VANCOUVER, BC
 V6C 1T2

Project: MOLY MAY

Comments: CC: PACIFIC GEO-ROC EXPL - ANYO CAMP

Page No. : 3-A
 Tot. Pages: 3
 Date : 05-JUL-88
 Invoice # : I-8817779
 P.O. # : NONE

CERTIFICATE OF ANALYSIS A8817779

SAMPLE DESCRIPTION	PREP CODE		Au ppb	Al %	Ag ppm	As ppm	Ba ppm	Be ppm	Bi ppm	Ca %	Cd ppm	Co ppm	Cr ppm	Cu ppm	Fe %	Ga ppm	Hg ppm	K %	La ppm	Mg %	Mn ppm
			FA+AA	%	ppm	ppm	ppm	ppm	ppm	%	ppm	ppm	ppm	ppm	%	ppm	ppm	%	ppm	%	ppm
Z-170	202	238	< 5	1.14	< 0.2	15	30	< 0.5	< 2	0.02	< 0.5	< 1	20	114	0.96	< 10	< 1	0.04	< 10	0.04	17
Z-171	202	238	10	0.93	< 0.2	< 5	80	< 0.5	< 2	0.15	1.0	1	16	583	1.09	< 10	< 1	0.06	< 10	0.05	34
Z-172	202	238	< 5	1.28	< 0.2	5	100	< 0.5	< 2	0.12	0.5	< 1	30	70	0.55	< 10	< 1	0.11	< 10	0.08	44
Z-173	202	238	< 5	0.56	< 0.2	< 5	60	< 0.5	< 2	0.32	2.0	1	10	690	0.66	< 10	< 1	0.07	< 10	0.06	79
Z-174	202	238	15	0.12	< 0.2	< 5	20	< 0.5	< 2	0.34	1.5	< 1	< 1	581	0.41	< 10	< 1	0.03	< 10	0.05	38
Z-175	202	238	5	1.13	< 0.2	< 5	50	< 0.5	< 2	0.07	0.5	< 1	20	121	0.35	< 10	< 1	0.06	< 10	0.03	17
Z-176	202	238	< 5	1.42	< 0.2	10	110	< 0.5	< 2	0.04	< 0.5	< 1	36	30	1.62	< 10	< 1	0.14	< 10	0.12	53
Z-177	202	238	< 5	1.91	< 0.2	5	110	0.5	< 2	0.04	0.5	4	51	110	3.17	< 10	< 1	0.17	< 10	0.34	133
Z-1310	202	238	5	0.58	< 0.2	< 5	40	< 0.5	< 2	0.14	0.5	< 1	5	289	0.41	< 10	< 1	0.03	< 10	0.03	58
Z-1320	202	238	100	0.25	< 0.2	< 5	20	< 0.5	< 2	< 0.01	< 0.5	< 1	8	95	0.10	< 10	< 1	0.01	< 10	< 0.01	15

CERTIFICATION :



Chemex Labs Ltd.

Analytical Chemists * Geochemists * Registered Assayers

112 BROOKSBANK AVE., NORTH VANCOUVER,
BRITISH COLUMBIA, CANADA V7J-2C1

PHONE (604) 984-0221

To: PACIFIC GEO-ROC EXPLORATION LTD.

256 - 409 GRANVILLE ST.
VANCOUVER, BC
V6C 1T2

Project: MOLY MAY

Comments: CC: PACIFIC GEO-ROC EXPL - ANYO CAMP

Page No. :3-A

Tot. Pages:3

Date :05-JUL-88

Invoice #: I-8817779

P.O. #: NONE

CERTIFICATE OF ANALYSIS A8817779

SAMPLE DESCRIPTION	PREP CODE		Au ppb	Al %	Ag ppm	As ppm	Ba ppm	Be ppm	Bi ppm	Ca %	Cd ppm	Co ppm	Cr ppm	Cu ppm	Fe %	Ga ppm	Hg ppm	K %	La ppm	Mg %	Mn ppm
			FA+AA																		
Z-170	202	238	< 5	1.14	< 0.2	15	30	< 0.5	< 2	0.02	< 0.5	< 1	20	114	0.96	< 10	< 1	0.04	< 10	0.04	17
Z-171	202	238	10	0.93	< 0.2	< 5	80	< 0.5	< 2	0.15	1.0	1	16	583	1.09	< 10	< 1	0.06	< 10	0.05	34
Z-172	202	238	< 5	1.28	< 0.2	< 5	100	< 0.5	< 2	0.12	0.5	< 1	30	70	0.55	< 10	< 1	0.11	< 10	0.08	44
Z-173	202	238	< 5	0.56	< 0.2	< 5	60	< 0.5	< 2	0.32	2.0	1	10	690	0.66	< 10	< 1	0.07	< 10	0.06	79
Z-174	202	238	15	0.12	< 0.2	< 5	20	< 0.5	< 2	0.34	1.5	< 1	< 1	581	0.41	< 10	< 1	0.03	< 10	0.05	38
Z-175	202	238	5	1.13	< 0.2	< 5	50	< 0.5	< 2	0.07	0.5	< 1	20	121	0.35	< 10	< 1	0.06	< 10	0.03	17
Z-176	202	238	< 5	1.42	< 0.2	10	110	< 0.5	< 2	0.04	< 0.5	< 1	36	30	1.62	< 10	< 1	0.14	< 10	0.12	53
Z-177	202	238	< 5	1.91	< 0.2	5	110	0.5	< 2	0.04	0.5	4	51	110	3.17	< 10	< 1	0.17	< 10	0.34	133
Z-1310	202	238	5	0.58	< 0.2	< 5	40	< 0.5	< 2	0.14	0.5	< 1	5	289	0.41	< 10	< 1	0.03	< 10	0.03	58
Z-1320	202	238	100	0.25	< 0.2	< 5	20	< 0.5	< 2	< 0.01	< 0.5	< 1	8	95	0.10	< 10	< 1	0.01	< 10	< 0.01	15



Chemex Labs Ltd.

Analytical Chemists * Geochemists * Registered Assayers

112 BROOKSBANK AVE., NORTH VANCOUVER,
BRITISH COLUMBIA, CANADA V7J-2C1

PHONE (604) 984-0221

To: PACIFIC GEO-ROC EXPLORATION LTD.

256 - 409 GRANVILLE ST.
VANCOUVER, BC
V6C 1T2

Project: MOLY MAY

Comments: CC: PACIFIC GEO-ROC EXPL - ANYO CAMP

Page No. :3-B

Tot. Pages:3

Date :05-JUL-88

Invoice #: I-8817779

P.O. #: NONE

CERTIFICATE OF ANALYSIS A8817779

SAMPLE DESCRIPTION	PREP CODE		Mo ppm	Na %	Ni ppm	P ppm	Pb ppm	Sb ppm	Sc ppm	Sr ppm	Ti %	Tl ppm	U ppm	V ppm	W ppm	Zn ppm
Z-170	202	238	1	0.01	2	560	4	< 5	< 1	5	0.06	< 10	< 10	24	< 5	13
Z-171	202	238	< 1	0.01	5	550	42	< 5	1	22	0.05	< 10	< 10	18	< 5	34
Z-172	202	238	1	0.01	6	490	24	< 5	1	17	0.08	< 10	< 10	33	< 5	18
Z-173	202	238	2	0.02	4	580	32	< 5	< 1	31	0.04	< 10	< 10	12	< 5	62
Z-174	202	238	< 1	0.02	1	460	16	< 5	< 1	17	< 0.01	< 10	< 10	2	< 5	104
Z-175	202	238	1	0.01	4	720	14	< 5	< 1	11	0.04	< 10	< 10	21	< 5	11
Z-176	202	238	2	0.01	5	230	16	< 5	2	8	0.08	< 10	< 10	67	< 5	17
Z-177	202	238	1	0.01	17	450	8	< 5	3	8	0.08	< 10	< 10	97	< 5	43
Z-1310	202	238	6	0.01	1	470	24	< 5	< 1	16	0.02	< 10	< 10	6	< 5	41
Z-1320	202	238	< 1	< 0.01	< 1	110	10	< 5	< 1	1	0.23	< 10	< 10	11	< 5	6

D-3C



Chemex Labs Ltd.

Analytical Chemists • Geochemists • Registered Assayers
212 BROOKSBANK AVE., NORTH VANCOUVER,
BRITISH COLUMBIA, CANADA V7J-2C1
PHONE (604) 984-0221

To: PACIFIC GEO-ROC EXPLORATION LTD.

256 - 409 GRANVILLE ST.
VANCOUVER, BC
V6C 1T2

A8818185

Comments: CC: J. H. HAJEK

CERTIFICATE A8818185

PACIFIC GEO-ROC EXPLORATION LTD

PROJECT : MOLY-MAY

P.O.# : NONE

Samples submitted to our lab in Vancouver, BC.

This report was printed on 13-JUL-88.

SAMPLE PREPARATION

CHEMEX CODE	NUMBER SAMPLES	DESCRIPTION
201	99	Dry, sieve -80 mesh; soil, sed.
217	12	Geochem: Ring only, no crush/split
238	111	ICP: Aqua regia digestion

* NOTE 1:

The 32 element ICP package is suitable for trace metals in soil and rock samples. Elements for which the nitric-aqua regia digestion is possibly incomplete are: Al, Ba, Be, Ca, Cr, Ga, K, La, Mg, Na, Sr, Ti, Tl, W.

ANALYTICAL PROCEDURES

CHEMEX CODE	NUMBER SAMPLES	DESCRIPTION	METHOD	DETECTION LIMIT	UPPER LIMIT
100	111	Au ppb: Fuse 10 g sample	FA-AAS	5	10000
921	111	Al %: 32 element, soil & rock	ICP-AES	0.01	15.00
922	111	Ag ppm: 32 element, soil & rock	ICP-AES	0.2	200
923	111	As ppm: 32 element, soil & rock	ICP-AES	5	10000
924	111	Ba ppm: 32 element, soil & rock	ICP-AES	10	10000
925	111	Be ppm: 32 element, soil & rock	ICP-AES	0.5	100.0
926	111	Bi ppm: 32 element, soil & rock	ICP-AES	2	10000
927	111	Ca %: 32 element, soil & rock	ICP-AES	0.01	15.00
928	111	Cd ppm: 32 element, soil & rock	ICP-AES	0.5	100.0
929	111	Co ppm: 32 element, soil & rock	ICP-AES	1	10000
930	111	Cr ppm: 32 element, soil & rock	ICP-AES	1	10000
931	111	Cu ppm: 32 element, soil & rock	ICP-AES	1	10000
932	111	Fe %: 32 element, soil & rock	ICP-AES	0.01	15.00
933	111	Ga ppm: 32 element, soil & rock	ICP-AES	10	10000
931	111	Hg ppm: 32 element, soil & rock	ICP-AES	1	10000
934	111	K %: 32 element, soil & rock	ICP-AES	0.01	10.00
935	111	La ppm: 32 element, soil & rock	ICP-AES	10	10000
936	111	Mg %: 32 element, soil & rock	ICP-AES	0.01	15.00
937	111	Mn ppm: 32 element, soil & rock	ICP-AES	1	10000
938	111	Mo ppm: 32 element, soil & rock	ICP-AES	1	10000
939	111	Na %: 32 element, soil & rock	ICP-AES	0.01	5.00
940	111	Ni ppm: 32 element, soil & rock	ICP-AES	1	10000
941	111	P ppm: 32 element, soil & rock	ICP-AES	10	10000
942	111	Pb ppm: 32 element, soil & rock	ICP-AES	2	10000
943	111	Sb ppm: 32 element, soil & rock	ICP-AES	5	10000
958	111	Sc ppm: 32 elements, soil & rock	ICP-AES	1	100000
944	111	Sr ppm: 32 element, soil & rock	ICP-AES	1	10000
945	111	Ti %: 32 element, soil & rock	ICP-AES	0.01	5.00
946	111	Tl ppm: 32 element, soil & rock	ICP-AES	10	10000
947	111	U ppm: 32 element, soil & rock	ICP-AES	10	10000
948	111	V ppm: 32 element, soil & rock	ICP-AES	1	10000
949	111	W ppm: 32 element, soil & rock	ICP-AES	5	10000
950	111	Zn ppm: 32 element, soil & rock	ICP-AES	1	10000



Chemex Labs Ltd.

Analytical Chemists * Geochemists * Registered Assayers

212 BROOKSBANK AVE. NORTH VANCOUVER,
BRITISH COLUMBIA, CANADA V7J-2C1

PHONE (604) 984-0211

To: PACIFIC GEO-ROC EXPLORATION LTD.

256 - 409 GRANVILLE ST.
VANCOUVER, BC
V6C 1T2

Project: MOLY-MAY

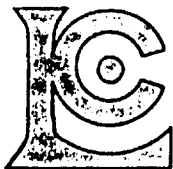
Comments: CC: J H HAJEK

Page No. : 3-A
Tot. Pages: 3
Date : 13-JUL-88
Invoice #: I-8818185
P.O. #: NONE

CERTIFICATE OF ANALYSIS A8818185

SAMPLE DESCRIPTION	PREP CODE	Au ppb FA+AA	Al %	Ag ppm	As ppm	Ba ppm	Be ppm	Bi ppm	Ca %	Cd ppm	Co ppm	Cr ppm	Cu ppm	Fe %	Ga ppm	Hg ppm	K %	La ppm	Mg %	Mn ppm
2300S 1338E	201 238	< 5	0.47	< 0.2	5	20	< 0.5	< 2	0.01	< 0.5	1	12	27	0.23	< 10	< 1	0.03	< 10	0.02	13
2300S 1450E	201 238	15	0.17	< 0.2	5	20	< 0.5	< 2	0.53	4.0	4	5	922	0.48	< 10	< 1	0.04	< 10	0.03	16
2300S 1463E	201 238	20	0.40	< 0.2	< 5	50	< 0.5	< 2	0.29	3.0	3	8	902	0.66	< 10	1	0.06	< 10	0.03	62
2300S 1475E	201 238	< 5	0.96	< 0.2	10	70	< 0.5	< 2	0.02	< 0.5	3	103	33	1.82	< 10	< 1	0.26	< 10	0.55	75
2300S 1483E	201 238	10	0.98	0.4	10	90	< 0.5	< 2	0.05	1.0	5	66	597	1.44	< 10	< 1	0.15	< 10	0.29	58
2300S 1512E	201 238	< 5	1.68	< 0.2	10	30	< 0.5	< 2	0.02	< 0.5	3	63	27	1.22	< 10	< 1	0.05	< 10	0.25	64
2300S 1525E	201 238	< 5	1.56	< 0.2	5	30	< 0.5	< 2	0.03	< 0.5	4	58	48	1.06	< 10	< 1	0.07	< 10	0.42	107
2300S 1550E	201 238	< 5	0.67	< 0.2	5	30	< 0.5	< 2	0.02	< 0.5	1	22	34	0.39	< 10	< 1	0.05	< 10	0.09	31
2300S 1563E	201 238	< 5	0.72	0.4	20	30	< 0.5	< 2	0.04	< 0.5	1	22	117	0.67	< 10	< 1	0.06	< 10	0.04	25
2300S 1575E	201 238	< 5	1.30	0.8	10	40	< 0.5	< 2	0.07	0.5	2	25	193	0.77	< 10	< 1	0.09	< 10	0.03	27
2300S 1583E	201 238	< 5	1.27	< 0.2	15	70	< 0.5	< 2	0.08	< 0.5	4	50	171	1.09	< 10	< 1	0.13	< 10	0.31	87
2300S 1600E	201 238	< 5	0.92	1.4	20	40	< 0.5	< 2	0.04	0.5	2	28	164	1.51	< 10	3	0.09	< 10	0.07	47
2300S 1612E	201 238	< 5	1.18	< 0.2	10	60	< 0.5	< 2	0.03	< 0.5	1	35	79	0.43	< 10	< 1	0.11	< 10	0.09	32
2300S 1625E	201 238	< 5	0.78	< 0.2	< 5	40	< 0.5	< 2	0.02	< 0.5	1	28	49	0.45	< 10	< 1	0.07	< 10	0.06	25
2300S 1638E	201 238	10	0.89	1.4	< 5	40	< 0.5	< 2	0.05	0.5	2	23	204	1.13	< 10	< 1	0.07	< 10	0.05	18
2300S 1650E	201 238	< 5	0.65	< 0.2	< 5	50	< 0.5	< 2	0.02	< 0.5	1	57	50	0.81	< 10	< 1	0.23	< 10	0.31	40
2300S 1650EA	201 238	< 5	0.32	< 0.2	5	10	< 0.5	< 2	0.01	< 0.5	1	18	64	0.33	< 10	< 1	0.03	< 10	0.02	7
2300S 1675E	201 238	< 5	1.07	0.2	5	70	< 0.5	< 2	0.10	< 0.5	3	43	89	1.15	< 10	< 1	0.16	< 10	0.33	107
2300S 1683E	201 238	< 5	2.06	2.0	40	120	< 0.5	< 2	0.07	< 0.5	12	59	244	3.04	< 10	< 1	0.15	10	0.45	251
2300S 1700E	201 238	< 5	2.01	< 0.2	45	110	< 0.5	< 2	0.07	< 0.5	16	106	82	3.19	< 10	< 1	0.18	10	0.84	254
2300S 1712E	201 238	< 5	2.55	< 0.2	< 5	110	0.5	< 2	0.05	< 0.5	10	183	21	2.52	< 10	< 1	0.14	10	1.20	172
2300S 1720E	201 238	35	0.22	0.4	< 5	160	< 0.5	< 2	0.56	5.5	4	6	1605	1.09	< 10	< 1	0.04	< 10	0.09	28
2300S 1725E	201 238	< 5	0.46	< 0.2	5	40	< 0.5	< 2	0.50	< 0.5	15	23	416	1.30	< 10	2	0.12	10	0.53	653
2300S 1738E	201 238	< 5	2.69	< 0.2	5	180	0.5	< 2	0.34	< 0.5	25	110	81	3.07	< 10	< 1	0.57	10	1.12	1585
2300S 1750E	201 238	5	1.79	< 0.2	5	190	0.5	< 2	0.53	< 0.5	10	73	77	2.52	< 10	1	0.51	10	1.19	328
2400S 1400E	201 238	5	0.52	0.4	10	30	< 0.5	< 2	0.05	1.0	2	12	321	0.74	< 10	< 1	0.06	< 10	0.03	88
2400S 1410E	201 238	< 5	0.22	< 0.2	< 5	10	< 0.5	< 2	0.56	4.0	2	3	73	0.09	< 10	< 1	0.03	< 10	0.02	45
2400S 1425E	201 238	5	0.10	< 0.2	< 5	10	< 0.5	< 2	0.04	1.0	2	4	486	0.75	< 10	< 1	0.03	< 10	0.01	82
2400S 1438E	201 238	10	0.18	0.6	< 5	40	< 0.5	< 2	0.10	1.5	2	2	512	0.58	< 10	4	0.04	< 10	0.01	56
2600S BLOOD	201 238	50	0.51	1.4	20	70	< 0.5	< 2	0.14	2.5	7	23	934	2.36	< 10	1	0.09	< 10	0.06	58
2600S BLOOD	201 238	< 5	0.49	< 0.2	10	60	< 0.5	< 2	0.03	< 0.5	2	58	134	0.63	< 10	1	0.10	< 10	0.20	22

CERTIFICATION: *B. Caughlin*



Chemex Labs Ltd.

Analytical Chemists * Geochemists * Registered Assayers

212 BROOKSBANK AVE. NORTH VANCOUVER,
BRITISH COLUMBIA, CANADA V7J-1C1

PHONE (604) 284-0221

To: PACIFIC GEO-ROC EXPLORATION LTD.

256 - 409 GRANVILLE ST.

VANCOUVER, BC

V6C 1T2

Project: MOLY-MAY

Comments: CC: J. H. HAJEK

Page No. : 3-B

Tot. Pages: 3

Date : 13-JUL-88

Invoice # : I-8818185

P.O. # : NONE

CERTIFICATE OF ANALYSIS A8818185

SAMPLE DESCRIPTION	PREP CODE	Mb ppm	Na %	Ni ppm	P ppm	Pb ppm	Sb ppm	Sc ppm	Sr ppm	Ti %	Tl ppm	U ppm	V ppm	W ppm	Zn ppm
2300S 1338E	201 238	12	0.01	2	100	18	< 5	< 1	2	0.23	< 10	< 10	27	< 5	7
2300S 1450E	201 238	2	0.01	3	520	38	< 5	< 1	24	0.01	< 10	< 10	3	< 5	181
2300S 1463E	201 238	5	0.01	5	720	42	< 5	< 1	13	0.05	< 10	< 10	11	< 5	59
2300S 1475E	201 238	1	0.01	9	200	2	< 5	3	2	0.20	< 10	< 10	60	< 5	24
2300S 1483E	201 238	4	0.02	15	540	38	< 5	2	11	0.16	< 10	< 10	41	< 5	71
2300S 1512E	201 238	5	0.01	15	230	24	< 5	2	3	0.38	< 10	< 10	69	< 5	61
2300S 1525E	201 238	2	0.01	15	260	20	< 5	3	4	0.29	< 10	< 10	50	< 5	44
2300S 1550E	201 238	7	0.02	3	160	6	< 5	1	3	0.17	< 10	< 10	31	< 5	10
2300S 1563E	201 238	5	0.01	5	490	36	< 5	1	6	0.23	< 10	< 10	26	< 5	14
2300S 1575E	201 238	10	0.02	3	1460	28	< 5	< 1	10	0.14	< 10	< 10	24	< 5	29
2300S 1583E	201 238	4	0.02	14	580	22	< 5	2	10	0.12	< 10	< 10	33	< 5	43
2300S 1600E	201 238	7	0.01	5	1010	20	< 5	1	6	0.14	< 10	< 10	34	< 5	26
2300S 1612E	201 238	6	0.01	5	500	26	< 5	1	6	0.13	< 10	< 10	26	< 5	15
2300S 1625E	201 238	5	0.01	2	250	12	< 5	< 1	4	0.08	< 10	< 10	21	< 5	9
2300S 1638E	201 238	2	0.03	5	820	22	< 5	< 1	8	0.04	< 10	< 10	21	5	16
2300S 1650E	201 238	2	0.01	9	160	12	< 5	1	3	0.10	< 10	< 10	18	< 5	21
2300S 1650EA	201 238	1	0.01	2	190	4	< 5	< 1	2	0.05	< 10	< 10	12	< 5	5
2300S 1675E	201 238	2	0.01	10	490	10	< 5	2	12	0.07	< 10	< 10	31	5	31
2300S 1683E	201 238	3	0.02	20	560	16	< 5	3	11	0.08	< 10	< 10	65	5	48
2300S 1700E	201 238	3	0.01	29	340	4	< 5	6	8	0.19	< 10	< 10	87	5	80
2300S 1712E	201 238	1	0.01	39	150	6	< 5	9	6	0.24	< 10	< 10	81	5	86
2300S 1720E	201 238	4	0.03	4	490	72	5	< 1	41	< 0.01	< 10	< 10	4	< 5	190
2300S 1725E	201 238	3	0.30	18	510	124	< 5	1	112	0.03	< 10	< 10	18	5	103
2300S 1738E	201 238	3	0.24	51	1970	14	< 5	7	51	0.12	10	10	67	10	115
2300S 1750E	201 238	1	0.36	44	950	12	< 5	7	61	0.12	< 10	20	58	10	112
2400S 1400E	201 238	2	0.01	2	220	28	< 5	< 1	8	0.16	< 10	< 10	35	< 5	46
2400S 1410E	201 238	1	0.01	3	490	< 2	< 5	< 1	26	< 0.01	< 10	< 10	1	< 5	132
2400S 1425E	201 238	1	0.01	1	150	28	< 5	< 1	3	0.01	< 10	< 10	8	< 5	63
2400S 1438E	201 238	2	0.01	5	440	20	< 5	< 1	12	0.01	< 10	< 10	4	< 5	97
2600S BLOOD	201 238	1	0.01	9	970	44	< 5	< 1	17	0.02	< 10	< 10	28	5	125
2600S BLOOAL	201 238	1	0.01	8	320	12	< 5	1	4	0.10	< 10	< 10	19	< 5	15

CERTIFICATION:



Chemex Labs Ltd.

Analytical Chemists • Geochemists • Registered Assayers

212 BROOKSBANK AVE., NORTH VANCOUVER,
BRITISH COLUMBIA, CANADA V7J-2C1

PHONE (604) 984-0221

To: PACIFIC GEO-ROC EXPLORATION LTD.

256 - 409 GRANVILLE ST.
VANCOUVER, BC
V6C 1T2

A8817788

Comments: CC: PACIFIC GEO-ROC EXPL. LTD

CERTIFICATE A8817788

PACIFIC GEO-ROC EXPLORATION LTD

PROJECT : MOLY MAY

P.O.# : NONE

Samples submitted to our lab in Vancouver, BC.

This report was printed on 11-JUL-88.

SAMPLE PREPARATION

CHEMEX CODE	NUMBER SAMPLES	DESCRIPTION
202	59	Dry, sieve -80 mesh, save reject
238	59	ICP: Aqua regia digestion

* NOTE 1:

The 32 element ICP package is suitable for trace metals in soil and rock samples. Elements for which the nitric-aqua regia digestion is possibly incomplete are: Al, Ba, Be, Ca, Cr, Ga, K, La, Mg, Na, Sr, Ti, Tl, W.

ANALYTICAL PROCEDURES

CHEMEX CODE	NUMBER SAMPLES	DESCRIPTION	METHOD	DETECTION LIMIT	UPPER LIMIT
100	59	Au ppb: Fuse 10 g sample	FA-AAS	5	10000
921	59	Al %: 32 element, soil & rock	ICP-AES	0.01	15.00
922	59	Ag ppm: 32 element, soil & rock	ICP-AES	0.2	200
923	59	As ppm: 32 element, soil & rock	ICP-AES	5	10000
924	59	Ba ppm: 32 element, soil & rock	ICP-AES	10	10000
925	59	Be ppm: 32 element, soil & rock	ICP-AES	0.5	100.0
926	59	Bi ppm: 32 element, soil & rock	ICP-AES	2	10000
927	59	Ca %: 32 element, soil & rock	ICP-AES	0.01	15.00
928	59	Cd ppm: 32 element, soil & rock	ICP-AES	0.5	100.0
929	59	Co ppm: 32 element, soil & rock	ICP-AES	1	10000
930	59	Cr ppm: 32 element, soil & rock	ICP-AES	1	10000
931	59	Cu ppm: 32 element, soil & rock	ICP-AES	1	10000
932	59	Fe %: 32 element, soil & rock	ICP-AES	0.01	15.00
933	59	Ga ppm: 32 element, soil & rock	ICP-AES	10	10000
934	59	Hg ppm: 32 element, soil & rock	ICP-AES	1	10000
934	59	K %: 32 element, soil & rock	ICP-AES	0.01	10.00
935	59	La ppm: 32 element, soil & rock	ICP-AES	10	10000
936	59	Mg %: 32 element, soil & rock	ICP-AES	0.01	15.00
937	59	Mn ppm: 32 element, soil & rock	ICP-AES	1	10000
938	59	Mo ppm: 32 element, soil & rock	ICP-AES	1	10000
939	59	Na %: 32 element, soil & rock	ICP-AES	0.01	5.00
940	59	Ni ppm: 32 element, soil & rock	ICP-AES	1	10000
941	59	P ppm: 32 element, soil & rock	ICP-AES	10	10000
942	59	Pb ppm: 32 element, soil & rock	ICP-AES	2	10000
943	59	Sb ppm: 32 element, soil & rock	ICP-AES	5	10000
958	59	Sc ppm: 32 elements, soil & rock	ICP-AES	1	100000
944	59	Sr ppm: 32 element, soil & rock	ICP-AES	1	10000
945	59	Ti %: 32 element, soil & rock	ICP-AES	0.01	5.00
946	59	Tl ppm: 32 element, soil & rock	ICP-AES	10	10000
947	59	U ppm: 32 element, soil & rock	ICP-AES	10	10000
948	59	V ppm: 32 element, soil & rock	ICP-AES	1	10000
949	59	W ppm: 32 element, soil & rock	ICP-AES	5	10000
950	59	Zn ppm: 32 element, soil & rock	ICP-AES	1	10000



Chemex Labs Ltd.

Analytical Chemists • Geochemists • Registered Assayers

212 BROOKSBANK AVE., NORTH VANCOUVER,
BRITISH COLUMBIA, CANADA V7J-2C1

PHONE (604) 984-0221

To: PACIFIC GEO-ROC EXPLORATION LTD.

256 - 409 GRANVILLE ST.
VANCOUVER, BC
V6C 1T2

Project: MOLY MAY

Comments: CC: PACIFIC GEO-ROC EXPL LTD.

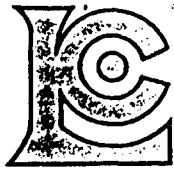
Page No.: 1-A
Tot. Pages: 2
Date: 11-JUL-88
Invoice #: I-8817788
P.O. #: NONE

CERTIFICATE OF ANALYSIS A8817788

SAMPLE DESCRIPTION	PREP CODE	Au ppb FA+AA	Al %	Ag ppm	As ppm	Ba ppm	Be ppm	Bi ppm	Ca %	Cd ppm	Co ppm	Cr ppm	Cu ppm	Fe %	Ga ppm	Hg ppm	K %	La ppm	Mg %	Mn ppm
2000S 1400E	202 238	< 5	1.46	0.2	< 5	80	< 0.5	< 2	0.47	3.5	15	41	32	2.08	< 10	< 1	0.17	10	0.91	257
2000S 1425E A-2	202 238	< 5	0.18	0.2	5	70	< 0.5	< 2	0.44	4.0	2	< 1	235	0.18	< 10	< 1	0.04	< 10	0.04	17
2000S 1425E B-C	202 238	< 5	2.23	0.2	< 5	240	< 0.5	< 2	0.07	< 0.5	6	222	8	1.95	< 10	< 1	0.40	< 10	1.35	198
2000S 1450E A-2	202 238	20	0.13	0.4	< 5	100	< 0.5	< 2	0.76	2.5	< 1	< 1	262	0.15	< 10	< 1	0.01	< 10	0.06	17
2000S 1650E B-C	202 238	20	1.57	0.2	< 5	50	< 0.5	< 2	0.11	< 0.5	3	38	7	1.52	< 10	< 1	0.08	< 10	0.59	187
2000S 1475E A-B	202 238	5	5.46	0.4	< 5	120	< 0.5	< 2	0.08	0.5	10	75	35	4.64	< 10	< 1	0.14	< 10	0.89	335
2000S 1475E B-2	202 238	10	5.74	0.6	< 5	170	< 0.5	< 2	0.07	< 0.5	11	82	31	5.96	< 10	< 2	0.14	< 10	0.91	446
2000S 1500E A-1	202 238	5	0.29	0.4	5	60	< 0.5	< 2	0.38	3.0	1	1	299	0.43	< 10	< 1	0.04	< 10	0.05	21
2000S 1500E B-2	202 238	5	3.82	0.2	5	110	< 0.5	< 2	0.19	< 0.5	20	66	39	4.24	< 10	< 1	0.15	10	0.93	998
2030S 1500E B-C	202 238	< 5	3.02	0.2	< 5	160	< 0.5	< 2	0.10	< 0.5	10	62	44	3.56	< 10	< 1	0.18	< 10	0.97	485
2100S 1425 B-C	202 238	< 5	0.78	0.2	< 5	30	< 0.5	8	0.02	0.5	1	66	60	0.78	< 10	< 1	0.03	< 10	0.19	45
2100S 1435E	202 238	< 5	2.52	0.2	< 5	90	< 0.5	< 2	0.16	0.5	7	61	75	3.21	< 10	< 1	0.16	< 10	1.06	356
2100S 1480E B-C	202 238	< 5	1.82	0.2	15	80	< 0.5	< 2	0.07	< 0.5	3	47	104	4.01	10	< 1	0.05	< 10	0.24	141
2100S 1512E	202 238	30	0.20	0.2	< 5	10	< 0.5	2	0.01	< 0.5	< 1	< 1	44	0.11	< 10	< 1	0.01	10	0.01	47
2100S 1525	202 238	5	0.03	0.2	< 5	< 10	< 0.5	< 2	< 0.01	< 0.5	< 1	< 1	21	0.11	< 10	< 1	< 0.01	10	< 0.01	45
2100S 1538	202 238	< 5	0.90	0.2	< 5	40	< 0.5	2	0.04	< 0.5	1	14	36	0.55	< 10	< 1	0.07	< 10	0.09	47
2100S 1550 A	202 238	< 5	0.76	0.2	< 5	40	< 0.5	< 2	0.04	< 0.5	< 1	12	28	0.18	< 10	< 1	0.05	< 10	0.05	23
2100S 1550 C	202 238	5	1.81	0.2	< 5	80	< 0.5	< 2	0.12	< 0.5	5	40	20	2.27	< 10	< 1	0.11	< 10	0.67	275
2100S 1565E	202 238	< 5	0.56	0.2	< 5	30	< 0.5	< 2	0.05	< 0.5	< 1	8	37	0.10	< 10	< 1	0.04	< 10	0.02	13
2100S 1575E	202 238	< 5	3.35	0.4	< 5	120	< 0.5	< 2	0.39	0.5	9	65	43	2.25	< 10	< 1	0.15	10	0.85	351
2100S 1588E	202 238	10	0.58	0.2	< 5	30	< 0.5	< 2	0.02	< 0.5	1	10	206	0.59	< 10	< 1	0.02	< 10	0.05	71
2100S 1600E	202 238	10	1.40	0.4	< 5	50	< 0.5	< 2	0.06	< 0.5	2	32	65	1.16	< 10	< 1	0.07	< 10	0.23	124
2100S 1612E	202 238	5	0.98	0.4	< 5	70	< 0.5	< 2	0.11	0.5	1	21	188	0.73	< 10	< 1	0.10	< 10	0.09	46
2100S 1625E	202 238	< 5	1.21	0.8	< 5	50	< 0.5	< 2	0.04	< 0.5	< 1	27	42	0.19	< 10	< 1	0.07	< 10	0.05	25
2100S 1638E B-6	202 238	< 5	0.81	0.2	< 5	50	< 0.5	< 2	0.06	0.5	< 1	16	36	0.45	< 10	< 1	0.09	< 10	0.06	37
2100S 1650E	202 238	< 5	2.68	0.2	< 5	200	< 0.5	< 2	0.29	< 0.5	11	52	37	3.91	< 10	< 1	0.22	10	1.21	507
2100S 1662E B-2	202 238	< 5	1.75	0.2	< 5	90	< 0.5	< 2	0.12	< 0.5	5	49	71	2.08	< 10	< 1	0.14	< 10	0.63	256
2100S 1675E	202 238	< 5	2.02	< 0.2	5	100	< 0.5	< 2	0.07	< 0.5	5	56	87	2.52	10	< 1	0.14	< 10	0.45	256
2100S 1700E	202 238	< 5	0.72	0.2	< 5	30	< 0.5	< 2	0.04	< 0.5	4	64	59	1.46	10	< 1	0.03	< 10	0.08	96
2100S 1700E B-C	202 238	< 5	2.18	0.2	< 5	80	< 0.5	< 2	0.12	0.5	7	51	63	3.18	< 10	< 1	0.15	< 10	0.94	312
2100S 1712E C	202 238	< 5	0.56	0.2	< 5	20	< 0.5	< 2	0.01	< 0.5	< 1	7	22	0.17	< 10	< 1	0.02	< 10	0.03	16
2100S 1725E	202 238	< 5	0.71	0.2	< 5	20	< 0.5	< 2	0.03	< 0.5	< 1	7	13	0.35	10	< 1	0.02	< 10	0.05	32
2100S 1750E B-2	202 238	< 5	3.34	0.2	< 5	140	< 0.5	< 2	0.07	0.5	6	142	59	2.98	< 10	< 1	0.20	< 10	0.83	287
2100S 1765E B-C	202 238	< 5	2.81	0.4	< 5	30	< 0.5	< 2	0.06	1.5	3	51	34	1.38	< 10	< 1	0.02	< 10	0.33	437
2100S 1773E A-B	202 238	< 5	0.97	0.2	< 5	60	< 0.5	< 2	0.03	< 0.5	< 1	< 1	47	2.07	< 10	< 1	0.10	< 10	0.46	147
2100S 1773E B-C	202 238	< 5	3.70	0.2	< 5	90	< 0.5	< 2	0.02	< 0.5	3	9	71	5.52	< 10	< 1	0.08	< 10	0.45	196
2100S 1788E B-2	202 238	< 5	2.17	0.2	< 5	110	< 0.5	< 2	0.02	< 0.5	2	119	20	3.51	< 10	< 1	0.31	10	0.70	166
2100S 1795E B-C	202 238	< 5	1.07	0.2	< 5	50	< 0.5	< 2	0.01	< 0.5	1	126	8	3.32	< 10	< 1	0.08	< 10	0.44	86
2400S 0-10 C	202 238	55	1.11	1.0	20	50	< 0.5	< 2	0.16	1.5	5	12	1310	2.30	< 10	< 1	0.06	< 10	0.07	43
2400S 10-20 E	202 238	< 5	1.15	0.2	5	70	< 0.5	< 2	0.07	< 0.5	2	28	35	1.52	10	< 1	0.13	10	0.35	112

CERTIFICATION :

B. Campbell



Chemex Labs Ltd.

Analytical Chemists * Geochemists * Registered Assayers
212 BROOKSBANK AVE., NORTH VANCOUVER,
BRITISH COLUMBIA, CANADA V7J-2C1
PHONE (604) 984-0221

To: PACIFIC GEO-ROC EXPLORATION LTD.

256 - 409 GRANVILLE ST.
VANCOUVER, BC
V6C 1T2

Project: MOLY MAY
Comments: CC: PACIFIC GEO-ROC EXPL. LTD.

Page No. : 1-B
Tot. Pages: 2
Date : 11-JUL-88
Invoice #: I-8817788
P.O. #: NONE

CERTIFICATE OF ANALYSIS A8817788

SAMPLE DESCRIPTION	PREP CODE	Mo ppm	Na %	Ni ppm	P ppm	Pb ppm	Sb ppm	Sc ppm	Sr ppm	Ti %	Tl ppm	U ppm	V ppm	W ppm	Zn ppm
2000S 1400E	202 238	23	0.07	58	910	6	< 5	4	45	0.08	< 10	< 10	48	5	120
2000S 1425E A-2	202 238	< 1	0.01	3	360	6	< 5	< 1	34	< 0.01	< 10	< 10	1	5	133
2000S 1425E B-C	202 238	1	0.01	34	230	< 2	< 5	8	7	0.23	< 10	< 10	80	5	60
2000S 1450E A-2	202 238	< 1	0.01	3	390	10	< 5	< 1	66	< 0.01	< 10	< 10	1	5	187
2000S 1650E B-C	202 238	1	0.01	15	120	6	< 5	3	10	0.14	< 10	< 10	49	5	38
2000S 1475E A-B	202 238	1	0.01	43	390	2	< 5	7	8	0.10	< 10	< 10	79	10	140
2000S 1475E B-2	202 238	3	0.01	43	290	8	5	9	9	0.12	< 10	< 10	114	15	143
2000S 1500E A-1	202 238	1	0.01	4	430	22	< 5	< 1	25	0.02	< 10	< 10	16	5	117
2000S 1500E B-2	202 238	7	0.01	56	530	6	< 5	7	13	0.10	< 10	< 10	75	10	151
2050S 1500E B-C	202 238	1	0.01	52	480	8	< 5	6	11	0.17	< 10	< 10	84	5	115
2100S 1425 B-C	202 238	19	< 0.01	5	280	28	< 5	1	3	0.27	< 10	< 10	41	5	15
2100S 1435E	202 238	22	0.01	42	430	16	< 5	5	12	0.12	< 10	< 10	70	15	134
2100S 1480E B-C	202 238	2	0.01	10	270	14	< 5	3	9	0.33	< 10	< 10	149	10	34
2100S 1512E	202 238	3	< 0.01	< 1	90	10	< 5	< 1	2	0.11	< 10	< 10	8	< 5	8
2100S 1525	202 238	9	< 0.01	< 1	30	6	< 5	< 1	< 1	0.06	< 10	< 10	3	< 5	4
2100S 1538	202 238	2	< 0.01	2	260	22	< 5	1	5	0.15	< 10	< 10	28	< 5	18
2100S 1550 A	202 238	< 1	0.01	1	280	10	< 5	< 1	5	0.09	< 10	< 10	18	< 5	9
2100S 1550 C	202 238	< 1	0.01	29	370	8	< 5	3	9	0.09	< 10	< 10	46	5	64
2100S 1565E	202 238	< 1	0.01	< 1	240	6	< 5	< 1	5	0.04	< 10	< 10	11	< 5	9
2100S 1575E	202 238	1	0.02	35	990	10	< 5	8	26	0.39	< 10	< 10	58	5	103
2100S 1588E	202 238	1	< 0.01	2	120	20	< 5	1	3	0.11	< 10	< 10	31	5	22
2100S 1600E	202 238	1	0.01	4	380	14	< 5	2	8	0.20	< 10	< 10	43	5	24
2100S 1612E	202 238	1	0.01	6	660	32	< 5	< 1	13	0.06	< 10	< 10	23	5	21
2100S 1625E	202 238	1	0.01	2	320	24	< 5	< 1	7	0.16	< 10	< 10	24	< 5	10
2100S 1638E B-6	202 238	< 1	0.01	2	410	6	< 5	1	7	0.07	< 10	< 10	22	< 5	11
2100S 1650E	202 238	< 1	0.02	53	740	10	< 5	7	24	0.12	< 10	< 10	73	10	117
2100S 1662E B-2	202 238	< 1	0.01	22	520	8	< 5	3	11	0.13	< 10	< 10	57	5	74
2100S 1675E	202 238	< 1	< 0.01	15	410	16	< 5	3	8	0.35	10	< 10	85	< 5	62
2100S 1700E	202 238	< 1	< 0.01	4	270	32	< 5	2	4	1.11	10	< 10	89	5	32
2100S 1700E B-C	202 238	< 1	0.01	30	510	14	< 5	4	10	0.10	< 10	< 10	63	5	85
2100S 1712E C	202 238	< 1	< 0.01	< 1	90	12	< 5	< 1	2	0.12	< 10	< 10	18	< 5	5
2100S 1725E	202 238	< 1	< 0.01	< 1	70	8	< 5	1	4	0.11	< 10	< 10	30	< 5	6
2100S 1750E B-2	202 238	< 1	0.01	35	290	< 2	< 5	9	6	0.24	< 10	< 10	66	5	77
2100S 1765E B-C	202 238	1	0.01	12	1090	4	< 5	4	3	0.25	< 10	< 10	63	5	96
2100S 1773E A-B	202 238	4	0.01	1	220	4	< 5	3	4	0.17	< 10	< 10	86	10	43
2100S 1773E B-C	202 238	15	0.01	< 1	350	< 2	< 5	5	4	0.24	< 10	< 10	92	15	109
2100S 1788E B-2	202 238	2	0.01	8	230	2	< 5	5	4	0.29	< 10	< 10	105	5	52
2100S 1795E B-C	202 238	1	0.01	8	210	8	< 5	3	2	0.35	< 10	< 10	108	10	38
2400S 0-10 C	202 238	2	0.01	4	820	60	5	< 1	12	0.05	< 10	< 10	22	10	171
2400S 10-20 E	202 238	2	0.01	7	240	12	< 5	2	8	0.16	< 10	< 10	52	< 5	28

CERTIFICATION:

B. Caughy



Chemex Labs Ltd.

Analytical Chemists • Geochemists • Registered Assayers
 212 BROOKSBANK AVE., NORTH VANCOUVER,
 BRITISH COLUMBIA, CANADA V7J-1C1
 PHONE (604) 984-0121

To: PACIFIC GEO-ROC EXPLORATION LTD.

256 - 409 GRANVILLE ST.
 VANCOUVER, BC
 V6C 1T2

Project: MOLY MAY

Comments: CC: PACIFIC GEO-ROC EXPL. LTD.

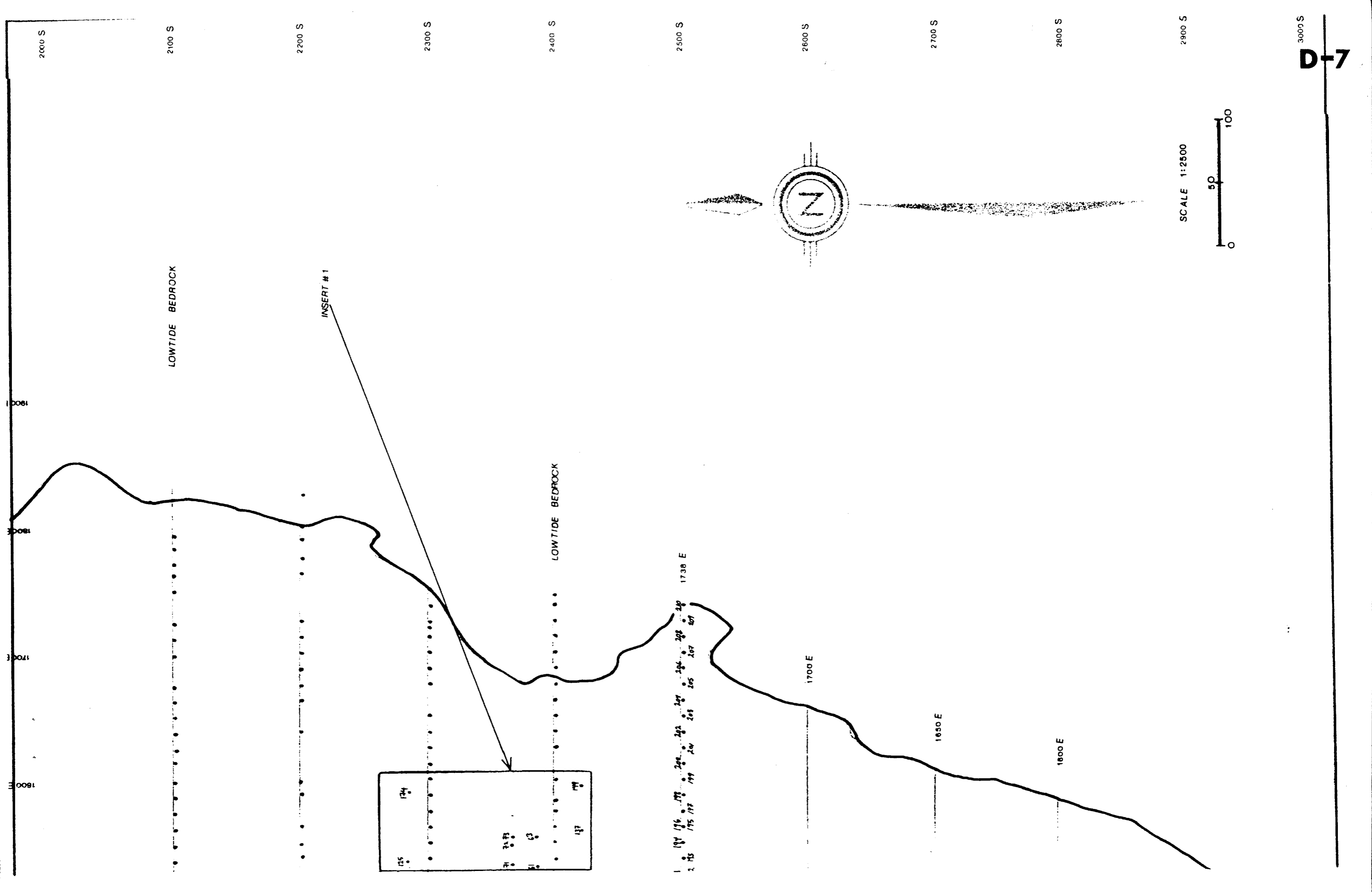
Page No.: 2-A
 Tot. Pages: 2
 Date: 11-JUL-88
 Invoice #: I-8817788
 P.O. #: NONE

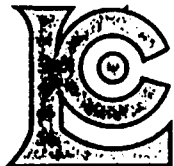
CERTIFICATE OF ANALYSIS A8817788

SAMPLE DESCRIPTION	PREP CODE		Au ppb	Al %	Ag ppm	As ppm	Ba ppm	Be ppm	Bi ppm	Ca %	Cd ppm	Co ppm	Cr ppm	Cu ppm	Fe %	Ga ppm	Hg ppm	K %	La ppm	Mg %	Mn ppm
			FATAA	%	ppm	ppm	ppm	ppm	ppm	%	ppm	ppm	ppm	ppm	%	ppm	ppm	%	ppm	%	ppm
2400S 1150E	202	238	5	0.80	0.2	5	30	< 0.5	26	0.05	0.5	1	10	69	0.35	20	< 1	0.06	< 10	0.04	47
2400S 1163E	202	238	< 5	1.05	0.2	< 5	40	< 0.5	6	0.05	0.5	1	17	76	0.20	10	< 1	0.06	< 10	0.05	22
2400S 1538E	202	238	< 5	0.45	0.2	5	20	< 0.5	8	0.04	< 0.5	< 1	4	39	0.32	10	< 1	0.03	10	0.02	49
2400S 1575E	202	238	< 5	1.04	0.4	5	20	< 0.5	2	0.10	1.0	1	5	104	0.35	< 10	< 1	0.02	< 10	0.02	33
2400S 1580E	202	238	20	0.12	0.2	< 5	10	< 0.5	2	0.06	0.5	2	< 1	406	0.57	10	< 1	0.03	10	0.02	776
2400S 1600E	202	238	15	0.10	0.2	< 5	20	< 0.5	2	0.06	0.5	1	1	227	0.32	10	< 1	0.03	< 10	0.02	65
2400S 1625E	202	238	10	0.23	0.2	< 5	10	< 0.5	6	0.07	< 0.5	1	3	37	0.13	10	< 1	0.03	10	0.02	37
2400S 1633E	202	238	10	0.29	0.2	< 5	20	< 0.5	2	0.10	1.0	1	13	341	0.61	< 10	< 1	0.01	< 10	0.03	54
2400S 1650E	202	238	< 5	0.68	0.2	< 5	10	< 0.5	< 2	0.03	< 0.5	3	63	49	0.85	10	< 1	0.27	10	0.39	126
2400S 1663E	202	238	20	0.68	1.2	10	20	< 0.5	< 2	0.29	1.0	1	4	218	1.03	< 10	1	0.08	< 10	0.11	83
2400S 1675E	202	238	5	0.09	0.2	5	10	< 0.5	2	0.52	1.0	< 1	1	39	0.08	< 10	< 1	0.02	< 10	0.08	18
2400S 1683E	202	238	5	2.47	0.4	< 5	70	< 0.5	< 2	6.23	0.5	6	28	140	1.78	< 10	< 1	0.23	< 10	0.85	358
2400S 1700E	202	238	< 5	0.48	0.2	5	80	< 0.5	< 2	>15.00	< 0.5	3	15	49	0.83	< 10	< 1	0.11	< 10	0.46	188
2400S 1700E A	202	238	< 5	0.47	0.2	< 5	130	< 0.5	< 2	>15.00	< 0.5	3	10	51	0.78	< 10	< 1	0.10	< 10	0.44	177
2400S 1715E	202	238	< 5	0.74	0.2	< 5	110	< 0.5	< 2	>15.00	1.0	5	12	43	1.20	< 10	< 1	0.18	< 10	0.71	241
2400S 1725E	202	238	< 5	0.90	0.2	10	90	< 0.5	< 2	>15.00	0.5	5	19	35	1.44	< 10	1	0.20	< 10	0.71	284
2400S 1735E A	202	238	< 5	1.63	0.2	10	110	< 0.5	< 2	5.11	1.0	9	35	64	2.75	< 10	1	0.31	< 10	1.15	428
2400S 1738E	202	238	< 5	1.48	0.2	5	140	< 0.5	< 2	10.95	1.0	8	29	62	2.45	< 10	1	0.30	< 10	1.09	366
2500S A2	202	238	35	0.41	0.6	15	130	< 0.5	< 2	0.25	7.0	5	4	2070	1.06	< 10	< 1	0.06	< 10	0.05	56

CERTIFICATION

R. Caughy





Chemex Labs Ltd.

Analytical Chemists • Geochemists • Registered Assayers

212 BROOKSBANK AVE., NORTH VANCOUVER,
BRITISH COLUMBIA, CANADA V7J-2C1

PHONE (604) 984-0221

To: PACIFIC GEO-ROC EXPLORATION LTD.

256 - 409 GRANVILLE ST.
VANCOUVER, BC
V6C 1T2

Project: MOLY MAY

Comments: CC: PACIFIC GEO-ROC EXPL. LTD.

Page No.: 2-B

Tot. Pages: 2

Date: 11-JUL-88

Invoice #: I-8817788

P.O. #: NONE

CERTIFICATE OF ANALYSIS A8817788

SAMPLE DESCRIPTION	PREP CODE		Mo	Na	Ni	P	Pb	Sb	Sc	Sr	Ti	Tl	U	V	W	Zn
			ppm	%	ppm	ppm	ppm	ppm	ppm	ppm	%	ppm	ppm	ppm	ppm	ppm
2400S 1150E	202	238	3	0.04	1	270	44	< 5	1	5	0.33	< 10	< 10	40	< 5	16
2400S 1163E	202	238	2	0.13	2	460	28	< 5	< 1	7	0.16	< 10	< 10	23	< 5	12
2400S 1538E	202	238	2	0.01	< 1	120	22	< 5	< 1	6	0.27	< 10	< 10	33	< 5	7
2400S 1575E	202	238	1	0.02	3	1220	8	< 5	< 1	9	0.02	< 10	< 10	8	< 5	26
2400S 1580E	202	238	2	0.07	< 1	160	52	< 5	< 1	4	0.02	< 10	< 10	4	5	49
2400S 1600E	202	238	1	0.05	1	160	22	< 5	< 1	6	0.06	< 10	< 10	3	< 5	33
2400S 1625E	202	238	3	0.04	1	170	14	< 5	< 1	7	0.10	< 10	< 10	9	< 5	18
2400S 1633E	202	238	2	0.05	3	340	20	< 5	< 1	11	0.02	< 10	< 10	7	< 5	49
2400S 1650E	202	238	< 1	0.12	23	110	4	< 5	2	3	0.10	< 10	< 10	22	< 5	21
2400S 1663E	202	238	2	0.26	4	1310	16	< 5	< 1	28	0.01	< 10	< 10	5	5	45
2400S 1675E	202	238	< 1	0.10	1	340	4	< 5	< 1	46	< 0.01	< 10	< 10	< 1	< 5	50
2400S 1683E	202	238	4	0.40	24	1160	16	< 5	3	241	0.05	< 10	< 10	32	10	139
2400S 1700E	202	238	1	0.39	10	280	4	< 5	2	1135	0.02	< 10	< 10	17	< 5	38
2400S 1700E A	202	238	1	0.41	9	270	10	< 5	2	1085	0.02	< 10	< 10	15	5	49
2400S 1715E	202	238	5	0.74	18	580	8	< 5	3	1320	0.03	< 10	< 10	27	5	64
2400S 1725E	202	238	2	0.68	18	650	4	< 5	3	1105	0.03	< 10	< 10	31	10	67
2400S 1735E A	202	238	< 1	1.07	45	1150	12	< 5	6	240	0.04	< 10	< 10	49	15	114
2400S 1738E	202	238	1	0.89	33	880	8	< 5	5	479	0.05	< 10	< 10	51	10	114
2500S A2	202	238	1	0.11	6	750	30	5	< 1	35	0.01	< 10	< 10	7	10	275

CERTIFICATION

B. Caughy

15



Chemex Labs Ltd.

Analytical Chemists * Geochemists * Registered Assayers

212 BROOKSBANK AVE., NORTH VANCOUVER,
BRITISH COLUMBIA, CANADA V7J-2C1

PHONE (604) 984-0221

To: PACIFIC GEO-ROC EXPLORATION LTD.

256 - 409 GRANVILLE ST.
VANCOUVER, BC
V6C 1T2

Project: MOLY-MAY
Comments: CC: J. H. HAJEK

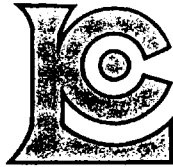
**Page No.: 1-A
Tot. Pages: 1
Date: 4-AUG-88
Invoice #: I-8818182
P.O. #: NONE

CERTIFICATE OF ANALYSIS A8818182

SAMPLE DESCRIPTION	PREP CODE		Au	NAA	As	NAA	Sb	NAA	Hg	Al	Ag	As	Ba	Be	Bi	Ca	Cd	Co	Cr	Cu	Fe	Ga	Hg	K
			ppb	bioppm	bioppm	bioppm	bio	ppb	ppm	ppm	ppm	ppm	ppm	ppm	ppm	ppm	ppm	ppm	ppm	ppm	ppm	ppm	ppm	ppm
2100S 1775E	210	238	1.4	0.70	< 0.06			40	340	< 0.10	< 1	6	< 0.10	< 0.50	9700	1.40	0.20	0.4	3.4	80	< 2	< 1	1740	
2100S+10M 1800E	210	238	1.4	0.41	< 0.05			30	420	< 0.10	< 1	< 2	< 0.10	< 0.50	3100	0.20	< 0.20	0.6	2.2	20	< 2	< 1	1860	
2200S 1535E	210	238	2.3	0.19	< 0.05			35	120	< 0.10	< 1	134	< 0.10	< 0.50	3800	0.10	0.20	0.6	2.2	20	< 2	< 1	3000	
2300S 1650E	210	238	0.5	0.14	< 0.05			35	400	< 0.10	< 1	2	< 0.10	< 0.50	5400	0.30	< 0.20	1.0	2.4	20	< 2	< 1	2100	
2300S 1665E	210	238	0.4	0.14	< 0.05			30	560	< 0.10	< 1	< 2	< 0.10	< 0.50	5900	0.30	0.20	0.8	2.8	40	< 2	< 1	2100	
2300S 1680E	210	238	0.3	0.34	< 0.05			35	500	< 0.10	< 1	< 2	< 0.10	< 0.50	3600	0.40	0.20	0.6	3.4	40	< 2	< 1	1840	
2300S 1690E	210	238	0.3	0.18	0.07			35	640	< 0.10	< 1	< 2	< 0.10	< 0.50	6100	0.80	0.20	0.6	4.4	40	< 2	< 1	1640	
2300S 1700E	210	238	0.4	0.13	< 0.05			30	460	< 0.10	< 1	< 2	< 0.10	< 0.50	4900	0.40	0.20	0.6	2.2	20	< 2	1	1620	
BL 00+2400S	210	238	3.1	0.24	< 0.05			25	520	< 0.10	< 1	< 2	< 0.10	< 0.50	5400	0.40	< 0.20	0.2	2.8	20	< 2	1	1840	
2400S 1705E	210	238	3.4	106.0	< 0.10			20	100	< 0.10	16	20	< 0.10	< 0.50	11200	1.40	0.20	0.6	4.4	200	< 2	< 1	27000	
BL 2500S	210	238	2.1	0.71	0.09			25	520	< 0.10	< 1	2	< 0.10	< 0.50	5400	0.40	< 0.20	0.6	2.2	20	< 2	< 1	1580	
2500S 1006E	210	238	0.4	0.16	< 0.05			30	300	< 0.10	< 1	2	< 0.10	< 0.50	6600	0.40	< 0.20	0.6	1.60	20	< 2	< 1	1960	
BL 00+2600S	210	238	0.7	0.51	< 0.05			30	700	< 0.10	1	2	< 0.10	< 0.50	4400	0.10	< 0.20	0.6	2.6	20	< 2	< 1	1820	

CERTIFICATION :

John Vank



Chemex Labs Ltd.

Analytical Chemists * Geochemists * Registered Assayers

212 BROOKSBANK AVE., NORTH VANCOUVER,
BRITISH COLUMBIA, CANADA V7J-2C1

PHONE (604) 984-0221

To: PACIFIC GEO-ROC EXPLORATION LTD.

256 - 409 GRANVILLE ST.
VANCOUVER, BC
V6C 1T2

Project: MOLY-MAY

Comments: CC: J. H. HAJEK

**Page No. : 1-B
Tot. Pages: 1
Date : 4-AUG-88
Invoice #: I-8818182
P.O. #: NONE

CERTIFICATE OF ANALYSIS A8818182

SAMPLE DESCRIPTION	PREP CODE		La	Mg	Mn	Mo	Na	Ni	P	Pb	Sb	Sc	Sr	Ti	Tl	U	V	W	Zn
			ppm	ppm	ppm	ppm	ppm	ppm	ppm	ppm	ppm	ppm	ppm	ppm	ppm	ppm	ppm	ppm	ppm
2100S 1775E	210	238	4	380	430	0.80	< 20	0.60	380	5.0	1	< 1	20	< 20	< 2	< 2	< 0.20	< 1	7.2
2100S+10M 1800E	210	238	4	320	320	0.60	20	0.40	370	1.50	1	< 1	2.8	< 20	< 2	< 2	< 0.20	< 1	3.4
2200S 1535E	210	238	4	400	280	0.20	20	2.0	415	3.0	1	< 1	31	< 20	< 2	< 2	< 0.20	< 1	62
2300S 1650E	210	238	4	320	320	0.40	< 20	0.40	485	0.50	1	< 1	4.0	< 20	< 2	< 2	< 0.20	< 1	4.8
2300S 1665E	210	238	4	320	400	0.20	< 20	0.20	460	3.5	1	< 1	5.0	< 20	< 2	< 2	< 0.20	< 1	4.2
2300S 1680E	210	238	4	380	480	0.40	< 20	0.40	445	2.0	< 1	< 1	4.4	< 20	< 2	< 2	< 0.20	< 1	5.2
2300S 1690E	210	238	6	260	390	0.20	20	0.60	500	2.0	1	< 1	6.2	< 20	< 2	< 2	< 0.20	< 1	6.8
2300S 1700E	210	238	4	280	510	0.20	< 20	< 0.20	520	1.00	< 1	< 1	4.6	< 20	< 2	< 2	< 0.20	< 1	5.4
BL 00+2400S	210	238	4	380	330	< 0.20	< 20	0.40	510	0.50	1	< 1	7.6	< 20	< 2	< 2	< 0.20	< 1	5.2
2400S 1705E	210	238	4	8200	50	0.20	21000	4.4	1185	2.0	1	< 1	550	< 20	< 2	< 2	0.20	< 1	19.5
BL 2500S	210	238	6	440	195	< 0.20	180	< 0.20	425	1.00	1	< 1	16.5	< 20	< 2	< 2	< 0.20	< 1	3.8
2500S 1006E	210	238	6	400	300	< 0.20	20	0.20	335	0.50	1	< 1	6.2	< 20	< 2	< 2	< 0.20	< 1	8.6
BL 00+2600S	210	238	4	500	300	< 0.20	20	0.20	410	1.50	1	< 1	5.6	< 20	< 2	< 2	< 0.20	< 1	2.8

CERTIFICATION :



Chemex Labs
Analytical Chemists • Geochemists
211 BROOKSBANK AVE., N
BRITISH COLUMBIA, C
PHONE (604) 984



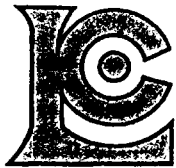
Chemex Labs
Analytical Chemists • Geochemists
211 BROOKSBANK AVE., N
BRITISH COLUMBIA, C
PHONE (604) 984



Chemex Labs L
Analytical Chemists • Geochemists • Registered As:
211 BROOKSBANK AVE., NORTH VANCOU
BRITISH COLUMBIA, CANADA V7J-2C
PHONE (604) 984-0221

SAMPLE DESCRIPTION	PREP CODE		Au ppb FA+AA
Z-428	214	--	not / ss
Z-430	214	--	not / ss
Z-432	214	--	not / ss
Z-433	214	--	< 10
Z-434	214	--	not / ss
Z-438	214	--	< 10
Z-439	214	--	< 10
Z-440	214	--	< 15
Z-517	214	--	< 10
Z-518	214	--	< 10
Z-519	214	--	< 10
Z-1349	214	--	not / ss
Z-1350	214	--	< 10
Z-1351	214	--	< 15
Z-1377	214	--	< 10
Z-1378	214	--	not / ss
2300S 1450E	214	--	< 15
2300S 1463E	214	--	not / ss
2300S 1475E	214	--	< 5
2300S 1483E	214	--	< 15
2300S 1720E	214	--	not / ss
2300S 1725E	214	--	not / ss
2400S 1425E	214	--	20
2400S 1438E	214	--	< 15

SAMPLE DESCRIPTION	PREP CODE		Au ppb FA+AA	SAMPLE DESCRIPTION	PREP CODE		Au ppb FA+AA
Z-248	214	--	< 15	Z-132	214	--	< 15
Z-249	214	--	75	Z-133	214	--	< 15
Z-250	214	--	40	Z-162	214	--	< 10
Z-251	214	--	30	Z-163	214	--	not / ss
Z-253	214	--	30	Z-164	214	--	< 10
Z-254	214	--	10	Z-165	214	--	< 10
Z-255	214	--	10	Z-166	214	--	< 10
Z-258	214	--	30	Z-170	214	--	< 15
Z-259	214	--	< 5	Z-171	214	--	not / ss
Z-260	214	--	30	Z-172	214	--	< 15
Z-261	214	--	not / ss	Z-173	214	--	not / ss
Z-262	214	--	< 10	Z-174	214	--	not / ss
Z-263	214	--	< 15	Z-1310	214	--	not / ss
Z-368	214	--	< 15	Z-1320	214	--	< 15
Z-369	214	--	30	2400S 0-10 C	214	--	40
Z-370	214	--	not / ss	2400S 10-20 E	214	--	< 10
Z-371	214	--	< 10	2500S A2	214	--	not / ss
Z-372	214	--	10	Z-62	214	--	< 5
Z-373	214	--	10	Z-64	214	--	not / ss
Z-374	214	--	10	Z-65	214	--	< 15
Z-375	214	--	30	Z-182	214	--	< 10
Z-376	214	--	< 10	Z-183	214	--	not / ss
Z-377	214	--	30	Z-184	214	--	< 10
Z-378	214	--	15	Z-185	214	--	not / ss
Z-379	214	--	< 15	Z-207	214	--	not / ss
Z-401	214	--	< 10	Z-208	214	--	not / ss
Z-402	214	--	< 15	Z-209	214	--	15
Z-403	214	--	30	Z-210	214	--	not / ss
Z-404	214	--	60	Z-211	214	--	< 10
Z-405	214	--	< 5	Z-216	214	--	not / ss
Z-418	214	--	15	Z-217	214	--	not / ss
Z-419	214	--	not / ss	Z-218	214	--	< 15
Z-420	214	--	30	Z-219	214	--	< 10
Z-421	214	--	not / ss	Z-241	214	--	< 10
Z-422	214	--	15	Z-242	214	--	< 15
Z-423	214	--	10	Z-243	214	--	< 15
Z-424	214	--	not / ss	Z-244	214	--	< 10
Z-425	214	--	not / ss	Z-245	214	--	< 10
Z-426	214	--	not / ss	Z-246	214	--	< 10
Z-427	214	--	< 15	Z-247	214	--	not / ss



Chemex Labs Ltd.

Analytical Chemists * Geochemists * Registered Assayers

212 BROOKSBANK AVE., NORTH VANCOUVER,
BRITISH COLUMBIA, CANADA V7J-2C1

PHONE (604) 984-0221

To: PACIFIC GEO-ROC EXPLORATION LTD.

256 - 409 GRANVILLE ST.
VANCOUVER, BC
V6C 1T2

A8818182

Comments: CC: J. H. HAJEK

CERTIFICATE A8818182

PACIFIC GEO-ROC EXPLORATION LTD.

PROJECT : MOLY-MAY

P.O.# : NONE

Samples submitted to our lab in Vancouver, BC.

This report was printed on 4-AUG-88.

SAMPLE PREPARATION

CHEMEX CODE	NUMBER SAMPLES	DESCRIPTION
210	13	Vegetation: Dry, mill -20 mesh
238	13	ICP: Aqua regia digestion

* NOTE 1:

The 32 element ICP package is suitable for trace metals in soil and rock samples. Elements for which the nitric-aqua regia digestion is possibly incomplete are: Al, Ba, Be, Ca, Cr, Ga, K, La, Mg, Na, Sr, Ti, Tl, W.

ANALYTICAL PROCEDURES

CHEMEX CODE	NUMBER SAMPLES	DESCRIPTION	METHOD	DETECTION LIMIT	UPPER LIMIT
197	13	Au ppb: Trace vegetation	NAA	0.2	10000
196	13	As ppm: Trace vegetation	NAA	0.05	10000
198	13	Sb ppm: Trace vegetation	NAA	0.05	10000
20	13	Hg ppb: HNO ₃ -HCl digestion	AAS-FLAMELESS	10	100000
1080	13	Al ppm: Oil samples	ICP-AES	2	10000
1084	13	Ag ppm: Oil samples	ICP-AES	0.01	100
923	13	As ppm: 32 element, soil & rock	ICP-AES	5	10000
924	13	Ba ppm: 32 element, soil & rock	ICP-AES	10	10000
1081	13	Be ppm: Oil samples	ICP-AES	0.01	100
1070	13	Bi ppm: Oil samples	ICP-AES	0.04	400
1082	13	Ca ppm: Oil samples	ICP-AES	2	10000
1071	13	Cd ppm: Oil samples	ICP-AES	0.01	100
1072	13	Co ppm: Oil samples	ICP-AES	0.02	200
1077	13	Cr ppm: Oil samples	ICP-AES	0.2	2000
1083	13	Cu ppm: Oil samples	ICP-AES	0.02	200
1075	13	Fe ppm: Oil samples	ICP-AES	2	10000
933	13	Ga ppm: 32 element, soil & rock	ICP-AES	10	10000
951	13	Hg ppm: 32 element, soil & rock	ICP-AES	1	10000
1088	13	K ppm: Oil samples	ICP-AES	2	10000
935	13	La ppm: 32 element, soil & rock	ICP-AES	10	10000
1078	13	Mg ppm: Oil samples	ICP-AES	2	10000
1076	13	Mn ppm: Oil samples	ICP-AES	0.02	200
1063	13	Mo ppm: Oil samples	ICP-AES	0.02	200
1087	13	Na ppm: Oil samples	ICP-AES	2	10000
1073	13	Ni ppm: Oil samples	ICP-AES	0.02	200
941	13	P ppm: 32 element, soil & rock	ICP-AES	10	10000
1069	13	Pb ppm: Oil samples	ICP-AES	0.04	400
943	13	Sb ppm: 32 element, soil & rock	ICP-AES	5	10000
958	13	Sc ppm: 32 elements, soil & rock	ICP-AES	1	100000
1086	13	Sr ppm: Oil samples	ICP-AES	0.02	200
1085	13	Ti ppm: Oil samples	ICP-AES	2	10000
946	13	Tl ppm: 32 element, soil & rock	ICP-AES	10	10000
947	13	U ppm: 32 element, soil & rock	ICP-AES	10	10000
1079	13	V ppm: Oil samples	ICP-AES	0.02	200
949	13	W ppm: 32 element, soil & rock	ICP-AES	5	10000
1065	13	Zn ppm: Oil samples	ICP-AES	0.02	200



Chemex Labs Ltd.

Analytical Chemists • Geochemists • Registered Assayers

113 BROOKSBANK AVE. NORTH VANCOUVER,
BRITISH COLUMBIA, CANADA V7J-2C1

PHONE (604) 984-0221

To PACIFIC GEO-ROC EXPLORATION LTD.

256 - 409 GRANVILLE ST.

VANCOUVER, BC

V6C 1T2

Project: MOLY-MAY

Comments: CC: J H HAJEK

Page No. : 1-A

Tot. Pages: 3

Date : 13-JUL-88

Invoice #: I-8818184

P.O. #: NONE

CERTIFICATE OF ANALYSIS A8818184

SAMPLE DESCRIPTION	PREP CODE		Au ppb	Al %	Ag ppm	As ppm	Ba ppm	Be ppm	Bi ppm	Ca %	Cd ppm	Co ppm	Cr ppm	Cu ppm	Fe %	Ga ppm	Hg ppm	K %	La ppm	Mg %	Mn ppm
	FA+AA																				
Z-251	201	238	15	1.08	0.8	30	20	< 0.5	50	0.02	< 0.5	2	28	403	1.75	20	< 1	0.07	< 10	0.13	5:
Z-253	201	238	20	3.36	0.4	10	30	< 0.5	8	0.02	< 0.5	5	154	99	6.01	10	< 1	0.05	< 10	0.45	15:
Z-254	201	238	15	2.25	0.4	20	110	< 0.5	8	0.14	< 0.5	9	87	125	3.85	10	< 1	0.23	10	1.11	53:
Z-255	201	238	< 5	0.15	0.2	< 5	< 10	< 0.5	2	0.05	< 0.5	< 1	12	14	0.10	< 10	< 1	0.03	< 10	0.02	1:
Z-258	201	238	20	0.25	0.8	20	60	< 0.5	2	0.40	4.0	4	16	1555	1.25	< 10	1	0.04	< 10	0.10	2:
Z-259	201	238	< 5	3.63	< 0.2	5	20	< 0.5	4	0.02	< 0.5	3	264	34	7.54	10	< 1	0.02	< 10	0.48	5:
Z-260	201	238	25	1.27	4.6	35	20	< 0.5	6	0.02	1.0	< 1	12	704	1.13	< 10	1	0.06	< 10	0.03	6:
Z-261	201	238	25	0.16	2.8	5	70	< 0.5	< 2	0.15	4.0	< 1	3	1140	0.58	< 10	< 1	0.05	< 10	0.03	2:
Z-262	201	238	5	1.95	0.2	15	70	< 0.5	4	0.05	< 0.5	5	44	125	3.13	< 10	< 1	0.11	< 10	0.59	20:
Z-263	201	238	20	0.64	1.4	15	10	< 0.5	2	0.01	< 0.5	< 1	1	1000	1.00	< 10	< 1	0.05	< 10	0.02	1:
Z-350	201	238	< 5	2.21	1.0	40	100	< 0.5	< 2	0.07	< 0.5	7	46	248	3.94	< 10	2	0.14	10	0.57	20:
Z-351	201	238	< 5	1.42	< 0.2	40	60	< 0.5	< 2	0.08	< 0.5	6	34	155	2.68	< 10	1	0.10	10	0.52	19:
Z-352	201	238	10	2.04	< 0.2	20	120	< 0.5	< 2	0.24	< 0.5	8	46	86	2.90	< 10	1	0.18	10	0.86	34:
Z-353	201	238	5	1.54	< 0.2	35	90	< 0.5	< 2	0.15	< 0.5	6	37	121	2.91	< 10	2	0.15	10	0.64	23:
Z-354	201	238	5	1.11	< 0.2	20	50	< 0.5	< 2	0.05	< 0.5	1	15	172	0.90	< 10	1	0.09	< 10	0.06	4:
Z-355	201	238	< 5	2.46	< 0.6	< 5	60	0.5	< 2	0.11	0.5	3	25	171	0.78	< 10	< 1	0.09	10	0.27	9:
Z-356	201	238	10	1.64	< 0.2	15	20	< 0.5	< 2	0.06	1.0	2	5	535	1.55	< 10	1	0.03	< 10	0.03	21:
Z-357	201	238	< 5	2.22	< 0.2	30	130	< 0.5	< 2	0.31	< 0.5	20	49	107	4.01	< 10	< 1	0.19	10	0.95	98:
Z-358	201	238	< 5	1.59	0.2	20	50	< 0.5	2	0.07	< 0.5	5	21	55	2.36	< 10	< 1	0.08	10	0.25	16:
Z-359	201	238	< 5	2.12	< 0.2	5	60	< 0.5	4	0.05	< 0.5	6	37	13	3.11	< 10	< 1	0.10	10	0.61	28:
Z-360	201	238	5	0.78	< 0.2	20	140	< 0.5	< 2	0.60	0.5	12	21	197	1.65	< 10	< 1	0.19	10	0.39	105:
Z-361	201	238	< 5	1.41	< 0.2	20	60	< 0.5	2	0.18	< 0.5	5	35	132	2.35	< 10	< 1	0.14	10	0.68	25:
Z-362	201	238	20	1.97	0.6	20	70	< 0.5	< 2	0.14	0.5	6	27	207	3.13	< 10	< 1	0.13	10	0.41	17:
Z-363	201	238	5	3.96	< 0.2	35	110	< 0.5	< 2	0.12	< 0.5	16	84	114	4.54	< 10	< 1	0.17	10	0.91	32:
Z-364	201	238	< 5	2.78	< 0.2	20	150	< 0.5	< 2	0.14	< 0.5	14	59	33	3.95	< 10	< 1	0.21	10	1.18	66:
Z-365	201	238	5	2.45	< 0.2	5	140	< 0.5	< 2	0.08	< 0.5	9	48	40	3.65	< 10	< 1	0.19	10	0.73	33:
Z-366	201	238	< 5	2.60	0.6	35	70	< 0.5	< 2	0.09	< 0.5	8	47	133	4.12	< 10	< 1	0.12	10	0.52	20:
Z-367	201	238	< 5	1.69	0.2	25	50	< 0.5	< 2	0.04	< 0.5	5	35	72	3.67	< 10	< 1	0.10	10	0.26	12:
Z-368	201	238	< 5	1.18	0.2	10	160	< 0.5	< 2	0.08	1.5	2	14	289	0.94	< 10	< 1	0.13	20	0.12	8:
Z-369	201	238	25	0.93	1.8	30	50	< 0.5	2	0.32	1.5	3	6	1305	1.74	< 10	< 1	0.08	< 10	0.08	5:
Z-370	201	238	25	1.12	1.6	35	80	< 0.5	2	0.43	2.5	4	9	645	1.58	< 10	< 1	0.08	10	0.12	8:
Z-371	201	238	< 5	1.61	< 0.2	25	180	0.5	2	0.54	0.5	10	24	370	1.89	< 10	< 1	0.12	20	0.36	26:
Z-372	201	238	< 5	1.69	< 0.2	25	130	< 0.5	< 2	0.22	< 0.5	9	42	50	3.06	< 10	< 1	0.15	10	0.82	42:
Z-373	201	238	< 5	1.61	< 0.2	10	70	< 0.5	2	0.09	0.5	5	23	228	1.98	< 10	< 1	0.14	< 10	0.36	17:
Z-374	201	238	< 5	1.40	< 0.2	20	70	< 0.5	2	0.05	< 0.5	5	28	106	2.08	10	< 1	0.16	10	0.39	24:
Z-375	201	238	50	1.42	0.4	15	100	< 0.5	< 2	0.07	1.0	5	28	452	2.10	< 10	< 1	0.14	< 10	0.20	11:
Z-376	201	238	10	3.07	< 0.2	35	130	< 0.5	< 2	0.22	< 0.5	16	61	141	4.46	< 10	2	0.17	10	1.05	77:
Z-377	201	238	15	1.71	< 0.2	15	90	< 0.5	< 2	0.08	< 0.5	4	34	150	1.89	< 10	< 1	0.16	< 10	0.47	18:
Z-378	201	238	< 5	3.41	< 0.2	15	190	0.5	2	0.14	< 0.5	21	69	85	4.51	< 10	< 1	0.28	10	1.29	79:
Z-379	201	238	10	1.75	0.2	25	110	< 0.5	< 2	0.10	0.5	7	34	618	2.9	< 10	1	0.17	10	0.57	31:

CERTIFICATION: 

D-33



Chemex Labs Ltd.

Analytical Chemists * Geochemists * Registered Assayers
212 BROOKSBANK AVE., NORTH VANCOUVER,
BRITISH COLUMBIA CANADA V7J-2C1
PHONE (604) 984-0221

To: PACIFIC GEO-ROC EXPLORATION LTD.

256 - 409 GRANVILLE ST.
VANCOUVER, BC
V6C 1T2

A8818184

Comments: CC: J H HAJEK

CERTIFICATE A8818184

ANALYTICAL PROCEDURES

PACIFIC GEO-ROC EXPLORATION LTD.
PROJECT : MOLY-MAY
P.O.# : NONE

Samples submitted to our lab in Vancouver, BC.
This report was printed on 13-JUL-88.

SAMPLE PREPARATION

CHEMEX CODE	NUMBER SAMPLES	DESCRIPTION
201	117	Dry, sieve -80 mesh; soil, sed.
217	3	Geochem: Ring only, no crush/split
238	120	ICP: Aqua regia digestion

* NOTE 1:

The 32 element ICP package is suitable for trace metals in soil and rock samples. Elements for which the nitric-aqua regia digestion is possibly incomplete are: Al, Ba, Be, Ca, Cr, Ga, K, La, Mg, Na, Sr, Ti, Tl, W.

CHEMEX CODE	NUMBER SAMPLES	DESCRIPTION	METHOD	DETECTION LIMIT	UPPER LIMIT
100	120	Au ppb: Fuse 10 g sample	FA-AAS	5	10000
921	120	Al %: 32 element, soil & rock	ICP-AES	0.01	15.00
922	120	Ag ppm: 32 element, soil & rock	ICP-AES	0.2	200
923	120	As ppm: 32 element, soil & rock	ICP-AES	5	10000
924	120	Ba ppm: 32 element, soil & rock	ICP-AES	10	10000
925	120	Be ppm: 32 element, soil & rock	ICP-AES	0.5	100.0
926	120	Bi ppm: 32 element, soil & rock	ICP-AES	2	10000
927	120	Ca %: 32 element, soil & rock	ICP-AES	0.01	15.00
928	120	Cd ppm: 32 element, soil & rock	ICP-AES	0.5	100.0
929	120	Co ppm: 32 element, soil & rock	ICP-AES	1	10000
930	120	Cr ppm: 32 element, soil & rock	ICP-AES	1	10000
931	120	Cu ppm: 32 element, soil & rock	ICP-AES	1	10000
932	120	Fe %: 32 element, soil & rock	ICP-AES	0.01	15.00
933	120	Ga ppm: 32 element, soil & rock	ICP-AES	10	10000
934	120	Hg ppm: 32 element, soil & rock	ICP-AES	1	10000
935	120	K %: 32 element, soil & rock	ICP-AES	0.01	10.00
936	120	La ppm: 32 element, soil & rock	ICP-AES	10	10000
937	120	Mg %: 32 element, soil & rock	ICP-AES	0.01	15.00
938	120	Mn ppm: 32 element, soil & rock	ICP-AES	1	10000
939	120	Mo ppm: 32 element, soil & rock	ICP-AES	1	10000
940	120	Na %: 32 element, soil & rock	ICP-AES	0.01	5.00
941	120	Ni ppm: 32 element, soil & rock	ICP-AES	1	10000
942	120	P ppm: 32 element, soil & rock	ICP-AES	10	10000
943	120	Pb ppm: 32 element, soil & rock	ICP-AES	2	10000
944	120	Sb ppm: 32 element, soil & rock	ICP-AES	5	10000
945	120	Sc ppm: 32 elements, soil & rock	ICP-AES	1	10000
946	120	Sr ppm: 32 element, soil & rock	ICP-AES	1	10000
947	120	Ti %: 32 element, soil & rock	ICP-AES	0.01	5.00
948	120	Tl ppm: 32 element, soil & rock	ICP-AES	10	10000
949	120	U ppm: 32 element, soil & rock	ICP-AES	10	10000
950	120	V ppm: 32 element, soil & rock	ICP-AES	1	10000
951	120	W ppm: 32 element, soil & rock	ICP-AES	5	10000
952	120	Zn ppm: 32 element, soil & rock	ICP-AES	1	10000

D-32



Chemex Labs Ltd.

Analytical Chemists • Geochemists • Registered Assayers

112 BROOKSBANK AVE., NORTH VANCOUVER,
BRITISH COLUMBIA, CANADA V7J-1C1

PHONE (604) 984-0221

To: PACIFIC GEO-ROC EXPLORATION LTD.

256 - 409 GRANVILLE ST.
VANCOUVER, BC
V6C 1T2

Project: MDLY-MAY

Comments: CC: J. H. HAJEK

Page No.: 1-B

Tot. Pages: 3

Date: 13-JUL-88

Invoice #: I-8818184

P.O. #: NONE

CERTIFICATE OF ANALYSIS A8818184

SAMPLE DESCRIPTION	PREP CODE	Mo	Na	Ni	P	Pb	Sb	Sc	Sr	Ti	Tl	U	V	W	Zn
		ppm	%	ppm	ppm	ppm	ppm	ppm	ppm	%	ppm	ppm	ppm	ppm	ppm
24005 Z-251/1050E	201 238	61	< 0.01	3	820	50	< 5	1	4	0.20	< 10	< 10	68	< 5	22
Z-253/1038E	201 238	12	0.01	12	370	16	< 5	5	2	0.30	< 10	< 10	148	< 5	43
Z-254/1036E	201 238	7	0.01	35	810	18	< 5	5	17	0.16	< 10	< 10	87	< 5	62
Z-255/1025E	201 238	< 1	< 0.01	< 1	70	< 2	< 5	< 1	3	0.06	< 10	< 10	5	< 5	4
Z-258/1000E	201 238	1	0.01	3	530	46	< 5	< 1	28	0.09	< 10	< 10	33	< 5	210
Z-259/1000E	201 238	< 1	< 0.01	20	320	6	< 5	5	1	0.40	< 10	< 10	135	< 5	48
Z-260/983E	201 238	14	< 0.01	< 1	1040	46	< 5	< 1	4	0.05	< 10	< 10	11	< 5	54
Z-261/975E	201 238	2	< 0.01	< 1	530	46	< 5	< 1	20	< 0.01	< 10	< 10	4	< 5	90
Z-262/963E	201 238	2	< 0.01	20	400	16	< 5	4	6	0.08	< 10	< 10	66	< 5	51
Z-263/963E	201 238	9	0.01	< 1	1710	40	< 5	< 1	3	0.01	< 10	10	5	< 5	31
24005 Z-350/1150E	201 238	2	0.01	21	980	30	< 5	2	12	0.08	< 10	< 10	76	55	78
24005 Z-351	201 238	< 1	0.02	21	290	16	< 5	3	8	0.09	< 10	< 10	61	35	39
24005 Z-352	201 238	2	0.02	32	610	26	< 5	5	20	0.09	< 10	< 10	61	25	78
24205 Z-353	201 238	< 1	0.02	22	400	24	< 5	4	14	0.09	< 10	< 10	54	25	53
24205 Z-354	201 238	3	0.01	2	670	24	< 5	< 1	7	0.04	< 10	< 10	23	10	26
2437 Z-355	201 238	< 1	0.01	14	1100	18	< 5	1	12	0.03	< 10	< 10	18	< 5	32
2437 Z-356	201 238	< 1	0.01	4	960	28	< 5	< 1	9	0.01	< 10	< 10	8	10	39
2450 Z-357	201 238	< 1	0.02	39	720	4	< 5	5	25	0.09	< 10	< 10	78	20	99
2450 Z-358	201 238	1	0.01	8	420	6	< 5	1	9	0.06	< 10	< 10	53	10	41
2450 Z-359	201 238	1	0.01	18	210	12	< 5	3	8	0.08	< 10	< 10	65	15	47
2462 Z-360	201 238	3	0.01	20	690	22	< 5	1	49	0.04	< 10	< 10	31	5	48
2462 Z-361	201 238	< 1	0.02	24	400	8	< 5	3	13	0.09	< 10	< 10	51	10	45
2462 Z-362	201 238	2	0.01	16	920	18	< 5	1	17	0.04	< 10	< 10	46	10	65
2508 Z-363	201 238	1	0.01	42	690	4	< 5	7	12	0.11	< 10	< 10	89	10	112
2572 Z-364	201 238	< 1	0.02	50	550	6	< 5	7	15	0.11	< 10	< 10	74	10	102
2572 Z-365	201 238	< 1	0.02	31	410	4	< 5	5	10	0.08	< 10	< 10	83	5	76
2572 Z-366	201 238	< 1	0.01	19	520	4	< 5	4	10	0.09	< 10	< 10	81	5	62
2525 Z-367	201 238	< 1	0.01	12	420	16	< 5	3	8	0.10	< 10	< 10	93	5	45
2525 Z-368	201 238	< 1	0.01	12	750	34	< 5	1	18	0.03	< 10	< 10	17	< 5	33
2525 Z-369	201 238	1	0.01	3	890	72	5	< 1	28	0.03	< 10	< 10	23	< 5	90
2525 Z-370	201 238	< 1	0.01	7	890	42	5	1	32	0.04	< 10	< 10	31	5	94
2537 Z-371	201 238	< 1	0.02	15	520	16	< 5	3	46	0.05	< 10	< 10	42	10	55
2537 Z-372	201 238	< 1	0.02	28	290	8	< 5	4	19	0.09	< 10	< 10	61	5	65
2537 Z-373	201 238	< 1	0.01	17	900	16	< 5	2	13	0.04	< 10	< 10	34	< 5	52
2537 Z-374	201 238	< 1	0.01	18	410	10	< 5	2	7	0.08	< 10	< 10	62	< 5	50
2550 Z-375	201 238	3	0.01	7	720	34	< 5	1	10	0.06	< 10	< 10	47	5	39
2550 Z-376	201 238	1	0.01	44	620	12	< 5	6	18	0.07	< 10	< 10	82	10	111
2550 Z-377	201 238	1	0.01	19	550	14	< 5	3	10	0.06	< 10	< 10	37	< 5	51
2562 Z-378	201 238	1	0.02	65	890	< 2	< 5	7	15	0.09	< 10	< 10	84	10	144
2562 Z-379	201 238	< 1	0.01	24	790	44	< 5	3	13	0.07	< 10	< 10	47	5	101

CERTIFICATION:

B. Caughlin
D-34



Chemex Labs Ltd.

Analytical Chemists • Geochemists • Registered Assayers

211 BROOKSBANK AVE., NORTH VANCOUVER,
BRITISH COLUMBIA, CANADA V7J-1C1

PHONE (604) 984-0221

To: PACIFIC GEO-ROC EXPLORATION LTD.

256 - 409 GRANVILLE ST.
VANCOUVER, BC
V6C 1T2

Project: MDLY-MAY

Comments: CC: J H HAJEK

Page No.: 2-A
Tot. Pages: 3
Date: 13-JUL-88
Invoice #: I-8818184
P.O. #: NONE

CERTIFICATE OF ANALYSIS A8818184

SAMPLE DESCRIPTION	PREP CODE		Au ppb	Al	Ag	As	Ba	Be	Bi	Ca	Cd	Co	Cr	Cu	Fe	Ga	Hg	K	La	Mg	Mn
			FA+AA	%	ppm	ppm	ppm	ppm	ppm	ppm	%	ppm	ppm	ppm	ppm	%	ppm	ppm	%	ppm	%
Z-380	201	238	< 5	2.96	< 0.2	5	180	< 0.5	< 2	0.27	0.5	14	62	83	4.58	< 10	< 1	0.28	10	1.21	520
Z-381	201	238	5	1.98	0.2	< 5	110	< 0.5	< 2	0.05	0.5	5	42	143	2.26	< 10	< 1	0.21	10	0.56	197
Z-382	201	238	25	2.34	< 0.2	15	120	< 0.5	< 2	0.09	< 0.5	9	52	101	3.09	< 10	< 1	0.23	10	0.86	329
Z-383	201	238	25	0.30	0.8	10	60	< 0.5	< 2	0.27	5.0	2	4	463	0.33	< 10	< 1	0.05	< 10	0.06	37
Z-384	201	238	5	1.42	1.0	20	110	< 0.5	< 2	0.23	1.0	3	21	336	1.43	< 10	< 1	0.17	10	0.13	84
Z-385	201	238	5	1.76	< 0.2	10	90	< 0.5	< 2	0.07	< 0.5	5	31	134	1.62	< 10	< 1	0.15	< 10	0.49	170
Z-386	201	238	< 5	2.34	< 0.2	10	120	< 0.5	2	0.11	< 0.5	8	46	85	2.61	< 10	< 1	0.19	10	0.87	325
Z-400	201	238	20	0.10	0.4	5	10	< 0.5	< 2	0.01	< 0.5	1	7	3	0.12	10	< 1	0.02	60	0.03	12
Z-401	201	238	5	2.28	< 0.2	< 5	50	< 0.5	< 2	0.03	< 0.5	8	145	46	7.39	10	< 1	0.11	10	0.82	155
Z-402	201	238	70	0.81	1.0	20	50	< 0.5	2	0.07	0.5	1	12	319	1.06	10	< 1	0.06	< 10	0.06	53
Z-403	201	238	< 5	0.60	0.6	15	30	< 0.5	< 2	0.04	< 0.5	1	19	354	0.89	< 10	< 1	0.10	< 10	0.13	57
Z-404	201	238	< 5	0.62	1.0	30	70	< 0.5	2	0.02	3.0	10	5	2740	2.35	< 10	< 1	0.05	< 10	0.04	1125
Z-405	201	238	< 5	0.12	0.4	< 5	< 10	< 0.5	2	< 0.01	< 0.5	< 1	1	29	0.10	< 10	< 1	0.02	20	< 0.01	12
Z-406	201	238	< 5	0.46	< 0.2	10	20	< 0.5	< 2	0.01	< 0.5	< 1	2	11	1.80	< 10	< 1	0.03	10	0.05	24
Z-407	201	238	5	0.36	< 0.2	5	10	< 0.5	22	< 0.01	< 0.5	1	16	27	0.21	10	< 1	0.02	10	0.01	9
Z-408	201	238	5	0.31	< 0.2	5	10	< 0.5	6	0.01	< 0.5	< 1	7	22	0.28	< 10	< 1	0.02	10	0.01	28
Z-409	201	238	10	0.28	< 0.2	10	10	< 0.5	4	0.03	< 0.5	1	11	177	0.34	< 10	< 1	0.02	< 10	0.02	55
Z-410	201	238	< 5	0.09	< 0.2	< 5	< 10	< 0.5	< 2	0.01	< 0.5	< 1	< 1	32	0.06	< 10	< 1	0.02	< 10	< 0.01	82
Z-411	201	238	5	0.35	0.4	20	< 10	< 0.5	6	0.08	1.5	1	4	199	0.31	< 10	< 1	0.03	< 10	0.01	60
Z-412	201	238	< 5	1.05	< 0.2	5	30	< 0.5	26	0.03	< 0.5	1	34	53	1.71	50	< 1	0.04	< 10	0.04	42
Z-413	201	238	< 5	0.65	0.4	10	< 20	< 0.5	< 2	0.01	< 0.5	1	13	35	0.66	10	< 1	0.05	10	0.06	46
Z-414	201	238	< 5	0.08	< 0.2	< 5	< 10	< 0.5	< 2	< 0.01	< 0.5	1	5	6	0.26	< 10	< 1	0.01	10	< 0.01	33
Z-415	201	238	10	2.26	< 0.2	10	50	< 0.5	< 2	0.03	< 0.5	6	85	38	7.54	20	< 1	0.07	10	0.33	131
Z-416	201	238	< 5	0.23	< 0.2	< 5	< 10	< 0.5	< 2	0.05	< 0.5	1	7	14	0.39	< 10	< 1	0.02	< 10	0.02	28
Z-417	201	238	90	0.30	0.2	< 5	20	< 0.5	2	0.20	1.5	1	5	180	0.30	< 10	< 1	0.04	< 10	0.02	78
Z-418	201	238	20	0.55	< 0.2	< 5	10	< 0.5	< 2	0.21	1.0	1	6	55	0.08	< 10	< 1	0.01	< 10	< 0.01	16
Z-419	201	238	10	0.68	2.4	40	30	< 0.5	8	0.04	4.0	14	6	2790	4.20	< 10	< 1	0.05	< 10	0.05	207
Z-420	201	238	5	0.33	0.4	5	10	< 0.5	8	0.01	< 0.5	2	3	335	0.53	< 10	< 1	0.03	< 10	0.01	82
Z-421	201	238	5	0.12	0.4	< 5	20	< 0.5	< 2	0.54	7.0	3	3	1045	0.35	< 10	< 1	0.05	< 10	0.09	99
Z-422	201	238	10	1.88	< 0.2	< 5	80	< 0.5	< 2	0.49	< 0.5	10	54	43	2.65	< 10	< 1	0.23	20	1.17	391
Z-423	201	238	20	1.23	< 0.2	< 5	30	< 0.5	40	0.07	< 0.5	4	38	115	1.95	20	< 1	0.08	10	0.19	721
Z-424	201	238	25	1.45	0.4	< 5	60	< 0.5	< 2	0.09	0.5	3	42	351	1.46	< 10	< 1	0.15	< 10	0.22	90
Z-425	201	238	5	1.34	1.6	15	20	< 0.5	< 2	0.15	1.5	4	37	406	1.79	< 10	1	0.10	< 10	0.16	233
Z-426	201	238	20	1.10	< 0.2	< 5	40	< 0.5	< 2	0.28	1.0	1	10	363	0.79	< 10	2	0.07	< 10	0.06	84
Z-427	201	238	20	0.87	0.2	< 5	10	< 0.5	16	0.04	1.5	2	9	325	0.48	< 10	1	0.05	10	0.02	36
Z-428	201	238	25	0.22	1.0	< 5	30	< 0.5	< 2	0.25	3.5	4	3	1290	1.19	< 10	< 1	0.05	< 10	0.04	42
Z-430	201	238	15	0.33	1.2	< 5	20	< 0.5	< 2	0.13	1.5	2	3	1065	0.69	< 10	< 1	0.06	< 10	0.03	46
Z-432	201	238	10	0.23	0.8	5	30	< 0.5	< 2	0.26	4.5	2	1	1330	0.54	< 10	1	0.06	< 10	0.04	32
Z-433	201	238	< 5	2.49	0.2	25	80	< 0.5	< 2	0.05	< 0.5	9	49	150	4.34	< 10	< 1	0.16	10	0.65	292
Z-434	201	238	5	1.89	0.4	45	50	< 0.5	< 2	0.04	< 0.5	6	45	189	4.55	< 10	< 1	0.09	< 10	0.25	167

CERTIFICATION:

B. Caugh

D-35



Chemex Labs Ltd.

Analytical Chemists • Geochemists • Registered Assayers

112 BROOKSBANK AVE. NORTH VANCOUVER,
BRITISH COLUMBIA, CANADA V7J-1C1

PHONE (604) 984-0221

To: PACIFIC GEO-ROC EXPLORATION LTD.

256 - 409 GRANVILLE ST.
VANCOUVER, BC
V6C 1T2

Project: MDLY-MAY

Comments: CC: J H HAJEK

Page No. : 3-A
Tot. Pages: 3
Date : 13-JUL-88
Invoice # : I-8818184
P.O. # : NONE

CERTIFICATE OF ANALYSIS A8818184

SAMPLE DESCRIPTION	PREP CODE		Au	Al	Ag	As	Ba	Be	Bi	Ca	Cd	Co	Cr	Cu	Fe	Ga	Hg	K	La	Mg	Mn
			ppb FA+AA	%	ppm	ppm	ppm	ppm	ppm	%	ppm	ppm	ppm	ppm	%	ppm	ppm	%	ppm	%	ppm
Z-435	201	238	< 5	2.05	< 0.2	5	60	< 0.5	< 2	0.04	0.5	8	55	121	7.09	20	< 1	0.11	10	0.28	188
Z-436	201	238	< 5	2.25	< 0.2	< 5	80	< 0.5	< 2	0.09	0.5	9	43	63	3.74	< 10	< 1	0.13	10	0.68	305
Z-437	201	238	< 5	1.66	0.2	15	60	< 0.5	4	0.05	< 0.5	5	32	92	2.77	10	< 1	0.12	10	0.21	146
Z-438	201	238	< 5	2.39	< 0.2	5	70	< 0.5	< 2	0.04	< 0.5	8	52	89	6.19	10	< 1	0.13	10	0.41	216
Z-439	217	238	15	0.61	1.8	10	100	< 0.5	< 2	0.58	3.0	4	10	803	1.28	< 10	< 1	0.11	10	0.07	133
Z-440	201	238	< 5	1.66	< 0.2	10	60	< 0.5	< 2	0.06	< 0.5	4	29	54	3.40	10	< 1	0.13	10	0.23	129
Z-441	201	238	< 5	1.56	0.2	< 5	80	< 0.5	10	0.03	< 0.5	1	48	79	0.91	10	< 1	0.17	< 10	0.26	55
Z-442	201	238	< 5	1.71	< 0.2	< 5	110	< 0.5	< 2	0.34	0.5	7	41	120	2.36	> 10	< 1	0.23	10	0.73	326
Z-443	201	238	< 5	0.64	< 0.2	< 5	30	< 0.5	< 2	0.03	< 0.5	2	14	108	0.89	< 10	< 1	0.06	10	0.05	86
Z-444	201	238	< 5	1.53	< 0.2	< 5	80	< 0.5	< 2	0.05	< 0.5	4	33	35	1.51	> 10	< 1	0.14	10	0.48	166
Z-445	201	238	< 5	2.32	< 0.2	< 5	110	< 0.5	< 2	0.12	0.5	10	43	141	3.19	< 10	< 1	0.18	10	0.65	274
Z-446	201	238	< 5	1.00	0.4	< 5	30	< 0.5	< 2	0.05	0.5	3	33	42	1.87	> 10	< 1	0.07	< 10	0.20	85
Z-447	217	238	< 5	0.32	1.6	< 5	50	< 0.5	< 2	0.15	4.0	2	9	222	0.58	> 10	< 1	0.05	< 10	0.07	12
Z-448	201	238	< 5	1.73	< 0.2	< 5	80	< 0.5	< 2	0.06	0.5	7	39	97	2.42	> 10	< 1	0.12	< 10	0.16	240
Z-449	201	238	< 5	1.24	< 0.2	< 5	20	< 0.5	< 2	0.03	< 0.5	5	40	19	3.93	> 10	< 1	0.04	10	0.58	98
Z-450	201	238	< 5	2.44	< 0.2	5	140	< 0.5	< 2	0.12	< 0.5	14	60	88	4.14	< 10	< 1	0.21	10	1.05	598
Z-451	201	238	< 5	2.96	< 0.2	5	130	0.5	< 2	0.10	< 0.5	18	66	37	4.14	> 10	< 1	0.16	10	1.02	679
Z-452	201	238	< 5	0.46	< 0.2	< 5	20	< 0.5	< 2	0.01	< 0.5	2	12	7	0.67	< 10	< 1	0.05	10	0.05	58
Z-453	201	238	< 5	1.97	< 0.2	10	100	< 0.5	< 2	0.16	0.5	9	45	122	3.65	< 10	< 1	0.17	10	0.77	309
Z-454	201	238	40	0.68	< 0.2	5	20	< 0.5	< 2	0.04	< 0.5	4	20	60	1.70	< 10	< 1	0.05	10	0.07	122
Z-455	201	238	< 5	2.31	< 0.2	< 5	140	< 0.5	< 2	0.17	0.5	13	56	86	3.34	> 10	< 1	0.19	10	1.09	510
Z-456	201	238	< 5	0.86	< 0.2	< 5	20	< 0.5	< 2	0.01	< 0.5	2	18	11	1.61	> 10	< 1	0.04	10	0.06	58
Z-457	201	238	< 5	3.97	< 0.2	< 5	70	< 0.5	< 2	0.02	< 0.5	11	122	24	8.79	> 10	< 1	0.07	10	0.54	252
Z-500	201	238	< 5	1.81	< 0.2	< 5	100	< 0.5	< 2	0.16	0.5	9	42	139	3.12	> 10	< 1	0.17	10	0.70	273
Z-501	201	238	< 5	4.16	< 0.2	< 5	110	< 0.5	< 2	0.04	< 0.5	12	81	45	5.20	> 10	< 1	0.11	10	0.78	353
Z-502	201	238	< 5	5.76	< 0.2	5	80	< 0.5	< 2	0.06	< 0.5	26	136	73	10.15	> 10	< 1	0.10	10	0.75	1000
Z-503	201	238	< 5	1.91	< 0.2	< 5	100	< 0.5	< 2	0.20	0.5	7	41	175	2.33	> 10	< 1	0.18	10	0.59	210
Z-504	201	238	< 5	6.63	< 0.2	20	120	0.5	< 2	0.06	< 0.5	16	136	51	5.85	> 10	< 1	0.14	10	1.18	423
Z-505	201	238	< 5	4.59	< 0.2	< 5	160	0.5	< 2	0.08	< 0.5	21	108	53	3.68	> 10	< 1	0.24	10	1.50	483
Z-506	201	238	< 5	3.06	< 0.2	< 5	190	0.5	< 2	0.08	0.5	19	60	41	4.14	> 10	< 1	0.21	10	1.25	551
Z-507	201	238	< 5	0.40	< 0.2	< 5	10	< 0.5	< 2	0.01	< 0.5	3	9	14	1.20	> 10	< 1	0.03	10	0.03	122
Z-508	201	238	< 5	1.62	< 0.2	10	30	< 0.5	< 2	0.01	< 0.5	8	37	32	7.62	> 10	< 1	0.05	10	0.14	542
Z-509	201	238	< 5	2.26	< 0.2	< 5	110	< 0.5	< 2	0.12	< 0.5	13	59	74	3.71	> 10	< 1	0.19	10	1.08	406
Z-510	201	238	10	0.71	0.4	10	50	< 0.5	< 2	0.09	0.5	3	20	188	1.22	> 10	< 1	0.09	> 10	0.11	53
Z-511	201	238	5	3.88	< 0.2	< 5	210	< 0.5	< 2	0.05	0.5	11	100	144	2.68	> 10	< 1	0.34	< 10	0.94	264
Z-512	201	238	< 5	0.47	< 0.2	< 5	30	< 0.5	< 2	0.02	< 0.5	< 1	9	23	0.38	> 10	2	0.06	10	0.04	27
Z-513	201	238	5	5.24	< 0.2	15	80	< 0.5	< 2	0.07	< 0.5	9	138	28	4.90	> 10	> 1	0.11	10	0.86	221
Z-514	217	238	10	1.50	1.2	< 5	60	< 0.5	< 2	0.08	1.0	1	26	292	0.29	> 10	> 1	0.09	< 10	0.04	53
Z-515	201	238	< 5	6.55	5.6	10	330	1.5	< 2	0.07	3.5	14	127	221	1.41	10	> 1	0.38	20	0.52	237
Z-516	201	238	< 5	1.62	0.2	5	100	< 0.5	< 2	0.06	< 0.5	2	35	120	0.10	< 10	< 1	0.12	< 10	0.05	31

CERTIFICATION: 

D-37



Chemex Labs Ltd.

Analytical Chemists * Geochemists * Registered Assayers
212 BROOKSBANK AVE., NORTH VANCOUVER,
BRITISH COLUMBIA, CANADA V7J-1C1
PHONE (604) 984-0221

To: PACIFIC GEO-ROC EXPLORATION LTD.

256 - 409 GRANVILLE ST.
VANCOUVER, BC
V6C 1T2

A8818185

Comments: CC: J H HAJEK

CERTIFICATE A8818185

PACIFIC GEO-ROC EXPLORATION LTD.
PROJECT : MOLY-MAY
P.O.# : NONE

Samples submitted to our lab in Vancouver, BC.
This report was printed on 13-JUL-88.

SAMPLE PREPARATION

CHEMEX CODE	NUMBER SAMPLES	DESCRIPTION
201	99	Dry, sieve -80 mesh; soil, sed.
217	12	Geochem: Ring only, no crush/split
238	111	ICP: Aqua regia digestion

* NOTE 1:

The 32 element ICP package is suitable for trace metals in soil and rock samples. Elements for which the nitric-aqua regia digestion is possibly incomplete are: Al, Ba, Be, Ca, Cr, Ga, K, La, Mg, Na, Sr, Ti, Tl, W.

ANALYTICAL PROCEDURES

CHEMEX CODE	NUMBER SAMPLES	DESCRIPTION	METHOD	DETECTION LIMIT	UPPER LIMIT
100	111	Au ppb: Fuse 10 g sample	FA-AAS	5	10000
921	111	Al %: 32 element, soil & rock	ICP-AES	0.01	15.00
922	111	Ag ppm: 32 element, soil & rock	ICP-AES	0.2	200
923	111	As ppm: 32 element, soil & rock	ICP-AES	5	10000
924	111	Ba ppm: 32 element, soil & rock	ICP-AES	10	10000
925	111	Be ppm: 32 element, soil & rock	ICP-AES	0.5	100.0
926	111	Bi ppm: 32 element, soil & rock	ICP-AES	2	10000
927	111	Ca %: 32 element, soil & rock	ICP-AES	0.01	15.00
928	111	Cd ppm: 32 element, soil & rock	ICP-AES	0.5	100.0
929	111	Co ppm: 32 element, soil & rock	ICP-AES	1	10000
930	111	Cr ppm: 32 element, soil & rock	ICP-AES	1	10000
931	111	Cu ppm: 32 element, soil & rock	ICP-AES	1	10000
932	111	Fe %: 32 element, soil & rock	ICP-AES	0.01	15.00
933	111	Ga ppm: 32 element, soil & rock	ICP-AES	10	10000
934	111	Hg ppm: 32 element, soil & rock	ICP-AES	1	10000
935	111	K %: 32 element, soil & rock	ICP-AES	0.01	10.00
936	111	La ppm: 32 element, soil & rock	ICP-AES	10	10000
937	111	Mg %: 32 element, soil & rock	ICP-AES	0.01	15.00
938	111	Mn ppm: 32 element, soil & rock	ICP-AES	1	10000
939	111	Mo ppm: 32 element, soil & rock	ICP-AES	1	10000
940	111	Na %: 32 element, soil & rock	ICP-AES	0.01	5.00
941	111	Ni ppm: 32 element, soil & rock	ICP-AES	1	10000
942	111	P ppm: 32 element, soil & rock	ICP-AES	10	10000
943	111	Pb ppm: 32 element, soil & rock	ICP-AES	2	10000
944	111	Sb ppm: 32 element, soil & rock	ICP-AES	5	10000
945	111	Sc ppm: 32 elements, soil & rock	ICP-AES	1	100000
946	111	Sr ppm: 32 element, soil & rock	ICP-AES	1	10000
947	111	Ti %: 32 element, soil & rock	ICP-AES	0.01	5.00
948	111	Tl ppm: 32 element, soil & rock	ICP-AES	10	10000
949	111	U ppm: 32 element, soil & rock	ICP-AES	10	10000
950	111	V ppm: 32 element, soil & rock	ICP-AES	1	10000
951	111	W ppm: 32 element, soil & rock	ICP-AES	5	10000
952	111	Zn ppm: 32 element, soil & rock	ICP-AES	1	10000

7-39



Chemex Labs Ltd.

Analytical Chemists • Geochemists • Registered Assayers

212 BROOKSBANK AVE., NORTH VANCOUVER,
BRITISH COLUMBIA, CANADA V7J-1C1

PHONE (604) 984-0221

To PACIFIC GEO-ROC EXPLORATION LTD.

256 - 409 GRANVILLE ST.
VANCOUVER, BC
V6C 1T2

Project: MDLY-MAY

Comments: CC: J H HAJEK

Page No. : 1-A

Tot. Pages: 3

Date : 13-JUL-88

Invoice # : I-8818185

P.O. # : NONE

CERTIFICATE OF ANALYSIS A8818185

SAMPLE DESCRIPTION	PREP CODE		Au ppb	Al %	Ag ppm	As ppm	Ba ppm	Be ppm	Bi ppm	Ca %	Cd ppm	Co ppm	Cr ppm	Cu ppm	Fe %	Ga ppm	Hg ppm	K %	La ppm	Mg %	Mn ppm
			FA+AA																		
Z-517	217	238	5	0.27	< 0.2	< 5	80	< 0.5	< 2	0.17	2.0	3	13	567	0.30	< 10	< 1	0.01	< 10	0.02	41
Z-518	217	238	< 5	0.65	< 0.2	< 5	40	< 0.5	< 2	0.10	1.5	2	11	330	0.62	< 10	< 1	0.05	< 10	0.04	47
Z-519	217	238	< 5	0.36	0.2	15	40	< 0.5	< 2	0.14	1.0	2	7	209	0.55	< 10	< 1	0.04	< 10	0.03	38
Z-520	217	238	< 5	0.67	0.6	< 5	40	< 0.5	< 2	0.07	1.5	2	10	154	0.37	< 10	2	0.04	< 10	0.02	14
Z-521	217	238	< 5	0.24	< 0.2	< 5	100	< 0.5	< 2	0.17	1.0	2	6	156	0.33	< 10	< 1	0.03	< 10	0.02	26
Z-522	201	238	10	1.21	1.8	< 5	50	< 0.5	< 2	0.04	1.0	2	19	274	0.91	< 10	< 1	0.13	< 10	0.05	45
Z-523	201	238	< 5	0.73	< 0.2	< 5	30	< 0.5	< 2	0.03	< 0.5	2	19	34	0.58	< 10	< 1	0.07	< 10	0.10	75
Z-524	201	238	< 5	0.92	< 0.2	< 5	40	< 0.5	< 2	0.04	< 0.5	2	19	12	0.79	< 10	2	0.05	10	0.17	69
Z-525	201	238	< 5	0.19	< 0.2	< 5	< 10	< 0.5	< 2	0.01	< 0.5	2	7	11	0.72	< 10	< 1	0.02	10	0.01	37
Z-1349	201	238	20	0.57	1.8	5	80	< 0.5	< 2	0.05	3.5	3	6	870	0.78	< 10	1	0.08	< 10	0.06	153
Z-1350	201	238	< 5	1.98	< 0.2	< 5	80	< 0.5	< 2	0.07	< 0.5	6	49	115	2.12	< 10	1	0.15	< 10	0.62	212
Z-1351	201	238	< 5	1.10	0.6	< 5	50	< 0.5	< 2	0.05	0.5	1	18	336	0.27	< 10	< 1	0.09	< 10	0.04	26
Z-1352	201	238	10	1.10	0.4	5	50	< 0.5	< 2	0.06	1.0	2	16	247	1.13	< 10	< 1	0.12	< 10	0.04	32
Z-1353	201	238	< 5	1.45	< 0.2	35	80	< 0.5	< 2	0.03	0.5	2	36	32	0.51	< 10	< 1	0.11	< 10	0.08	32
Z-1354	217	238	< 5	1.16	3.4	10	50	< 0.5	< 2	0.08	1.0	3	17	393	1.32	< 10	< 1	0.14	10	0.03	36
Z-1355	217	238	20	0.78	1.2	< 5	80	< 0.5	< 2	0.11	2.5	2	17	745	1.06	< 10	< 1	0.11	10	0.07	69
Z-1356	201	238	< 5	1.19	< 0.2	15	30	< 0.5	< 2	0.03	0.5	1	15	255	0.43	< 10	< 1	0.07	< 10	0.02	15
Z-1357	201	238	< 5	1.22	0.2	< 5	60	< 0.5	< 2	0.02	0.5	1	19	123	0.27	< 10	1	0.12	< 10	0.04	13
Z-1358	201	238	10	0.99	< 0.2	5	40	< 0.5	< 2	0.06	1.0	2	14	398	0.89	< 10	1	0.09	< 10	0.03	24
Z-1359	201	238	< 5	0.69	< 0.2	5	20	< 0.5	8	0.03	< 0.5	3	16	69	2.14	20	< 1	0.04	< 10	0.04	214
Z-1360	201	238	20	0.19	0.2	20	50	< 0.5	< 2	0.48	1.0	1	2	1055	0.60	< 10	< 1	0.04	< 10	0.04	44
Z-1361	201	238	< 5	0.49	< 0.2	5	20	< 0.5	< 2	0.02	< 0.5	1	6	50	0.42	< 10	< 1	0.04	< 10	0.02	24
Z-1362	201	238	15	0.89	< 0.2	5	50	< 0.5	< 2	0.05	< 0.5	1	12	186	0.73	< 10	< 1	0.08	< 10	0.03	20
Z-1363	201	238	< 5	1.97	< 0.2	25	90	< 0.5	< 2	0.08	< 0.5	7	51	102	2.69	< 10	< 1	0.17	10	0.78	261
Z-1364	201	238	< 5	1.34	< 0.2	10	40	< 0.5	< 2	0.04	< 0.5	2	22	85	1.70	10	< 1	0.09	10	0.11	68
Z-1365	217	238	< 5	1.88	< 0.2	5	120	< 0.5	< 2	0.04	< 0.5	6	63	52	3.60	< 10	< 1	0.25	< 10	0.55	182
Z-1366	201	238	< 5	1.29	0.4	< 5	90	< 0.5	< 2	0.03	< 0.5	2	25	132	0.39	10	< 1	0.17	< 10	0.11	36
Z-1367	201	238	< 5	1.12	< 0.2	< 5	60	< 0.5	< 2	0.03	< 0.5	2	40	93	1.16	< 10	< 1	0.15	< 10	0.16	72
Z-1368	201	238	< 5	0.88	< 0.2	< 5	40	< 0.5	< 2	0.02	< 0.5	1	17	120	0.50	< 10	< 1	0.10	< 10	0.04	22
Z-1369	201	238	< 5	1.86	< 0.2	5	70	< 0.5	< 2	0.04	< 0.5	4	47	25	2.02	< 10	1	0.17	10	0.49	149
Z-1370	201	238	10	1.32	1.6	15	30	< 0.5	< 2	0.07	0.5	3	11	358	1.40	< 10	< 1	0.09	< 10	0.04	30
Z-1371	201	238	< 5	1.34	< 0.2	< 5	80	< 0.5	< 2	0.04	< 0.5	2	31	77	1.16	10	< 1	0.18	< 10	0.16	71
Z-1372	201	238	5	0.74	< 0.2	10	50	< 0.5	< 2	0.02	< 0.5	1	22	89	0.46	10	1	0.11	10	0.05	29
Z-1373	201	238	< 5	3.29	< 0.2	45	100	< 0.5	< 2	0.04	< 0.5	9	111	99	4.38	< 10	< 1	0.20	10	1.06	386
Z-1374	201	238	5	2.54	< 0.2	35	70	< 0.5	< 2	0.03	< 0.5	8	80	138	4.70	< 10	< 1	0.16	< 10	0.64	263
Z-1375	201	238	< 5	1.00	0.2	5	40	< 0.5	< 2	0.03	< 0.5	1	12	219	0.75	< 10	2	0.08	< 10	0.04	26
Z-1375A	201	238	< 5	2.06	< 0.2	15	120	< 0.5	< 2	0.22	< 0.5	10	48	103	2.93	< 10	< 1	0.18	10	0.91	369
Z-1376	201	238	< 5	2.84	< 0.2	< 5	130	0.5	< 2	0.07	1.0	7	80	145	1.75	10	< 1	0.17	10	0.49	177
Z-1377	201	238	< 5	0.86	< 0.2	5	30	< 0.5	< 2	0.01	< 0.5	2	15	34	0.98	10	< 1	0.07	< 10	0.08	48
Z-1378	201	238	35	1.16	1.4	15	60	< 0.5	< 2	0.11	2.0	6	7	1535	2.01	< 10	1	0.06	< 10	0.04	188

CERTIFICATION* :



Chemex Labs Ltd.

Analytical Chemists • Geochemists • Registered Assayers

212 BROOKSBANK AVE., NORTH VANCOUVER,
BRITISH COLUMBIA, CANADA V7J-2C1

PHONE (604) 914-0221

To: PACIFIC GEO-ROC EXPLORATION LTD.

256 - 409 GRANVILLE ST.
VANCOUVER, BC
V6C 1T2

Project: MOLY-MAY

Comments: CC: J. H. HAJEK

Page No. : 1-B
Tot. Pages: 3
Date : 13-JUL-88
Invoice # : I-8818185
P.O. # : NONE

CERTIFICATE OF ANALYSIS A8818185

SAMPLE DESCRIPTION	PREP CODE		Mo	Na	Ni	P	Pb	Sb	Sc	Sr	Ti	Tl	U	V	W	Zn
			ppm	%	ppm	ppm	ppm	ppm	ppm	ppm	%	ppm	ppm	ppm	ppm	ppm
Z-517	217	238	1	0.01	6	340	34	< 5	< 1	24	< 0.01	< 10	< 10	6	< 5	29
Z-518	217	238	2	0.01	4	1380	26	< 5	< 1	15	0.01	< 10	< 10	13	< 5	25
Z-519	217	238	1	0.01	3	830	10	< 5	< 1	18	0.01	< 10	< 10	8	< 5	34
Z-520	217	238	1	0.01	3	1190	12	< 5	< 1	12	0.02	< 10	< 10	13	< 5	21
Z-521	217	238	1	0.01	4	810	20	< 5	< 1	29	< 0.01	10	< 10	5	< 5	24
Z-522	201	238	4	0.01	4	480	26	< 5	< 1	8	0.05	< 10	< 10	25	< 5	39
Z-523	201	238	1	0.01	5	150	18	< 5	1	4	0.10	< 10	< 10	28	< 5	14
Z-524	201	238	3	0.01	6	90	6	< 5	1	5	0.15	< 10	< 10	43	< 5	15
Z-525	201	238	2	< 0.01	4	50	6	< 5	< 1	2	0.04	< 10	< 10	32	< 5	11
Z-1349	201	238	5	0.01	< 1	700	56	< 5	< 1	17	0.03	< 10	< 10	17	< 5	91
Z-1350	201	238	9	0.01	18	510	8	< 5	3	8	0.10	< 10	< 10	53	< 5	54
Z-1351	201	238	11	0.01	2	700	34	< 5	< 1	7	0.06	< 10	< 10	18	< 5	18
Z-1352	201	238	15	0.01	4	820	20	< 5	1	9	0.05	< 10	< 10	20	< 5	27
Z-1353	201	238	4	0.01	13	370	16	< 5	1	6	0.06	< 10	< 10	36	< 5	15
Z-1354	217	238	5	0.01	7	1110	28	< 5	1	13	0.04	< 10	< 10	15	5	56
Z-1355	217	238	3	0.01	7	810	78	< 5	1	19	0.05	< 10	< 10	15	< 5	71
Z-1356	201	238	11	0.01	2	770	22	< 5	1	5	0.08	< 10	< 10	25	< 5	14
Z-1357	201	238	9	0.01	2	550	18	< 5	< 1	5	0.04	10	10	25	< 5	9
Z-1358	201	238	10	0.01	3	1280	30	< 5	< 1	9	0.02	< 10	< 10	16	5	29
Z-1359	201	238	18	< 0.01	3	260	40	< 5	1	4	0.31	< 10	< 10	178	< 5	19
Z-1360	201	238	2	0.01	2	520	22	< 5	< 1	10	0.03	< 10	< 10	18	< 5	86
Z-1361	201	238	3	< 0.01	< 1	140	8	< 5	< 1	3	0.05	< 10	< 10	20	< 5	9
Z-1362	201	238	8	0.01	3	680	28	< 5	< 1	9	0.05	< 10	< 10	19	< 5	14
Z-1363	201	238	10	0.01	27	570	4	< 5	4	9	0.09	< 10	< 10	60	< 5	55
Z-1364	201	238	6	0.01	< 1	270	16	< 5	1	7	0.09	< 10	< 10	57	< 5	19
Z-1365	217	238	5	0.01	21	500	12	< 5	4	7	0.05	< 10	< 10	78	5	45
Z-1366	201	238	5	0.01	2	660	16	< 5	< 1	7	0.06	10	10	26	5	15
Z-1367	201	238	7	0.01	5	350	18	< 5	1	6	0.07	< 10	< 10	39	< 5	16
Z-1368	201	238	7	0.01	3	570	24	< 5	< 1	4	0.06	< 10	< 10	22	< 5	10
Z-1369	201	238	1	0.01	19	400	18	< 5	2	6	0.05	< 10	< 10	52	5	36
Z-1370	201	238	2	0.01	7	920	20	< 5	1	12	0.02	< 10	< 10	16	< 5	51
Z-1371	201	238	7	0.01	5	410	20	< 5	1	7	0.07	< 10	< 10	44	< 5	17
Z-1372	201	238	7	0.01	3	210	28	< 5	1	5	0.14	< 10	< 10	30	< 5	9
Z-1373	201	238	2	0.02	33	490	6	< 5	7	6	0.13	< 10	< 10	87	10	83
Z-1374	201	238	2	0.01	19	650	14	< 5	5	6	0.13	< 10	< 10	87	5	59
Z-1375	201	238	2	0.01	1	410	26	< 5	< 1	6	0.04	< 10	< 10	18	< 5	19
Z-1375A	201	238	2	0.02	39	680	14	< 5	5	18	0.07	< 10	< 10	62	5	85
Z-1376	201	238	4	0.01	22	620	24	< 5	4	12	0.10	< 10	< 10	58	5	53
Z-1377	201	238	3	0.01	2	150	6	< 5	1	3	0.10	< 10	< 10	45	< 5	12
Z-1378	201	238	3	0.03	5	1050	134	< 5	1	16	0.03	< 10	< 10	15	140	

CERTIFICATION:

B. Caughlin

D-41



Chemex Labs Ltd.

Analytical Chemists * Geochemists * Registered Assayers

112 BROOKSBANK AVE., NORTH VANCOUVER,
BRITISH COLUMBIA, CANADA V7J-1C1

PHONE (604) 984-0221

To: PACIFIC GEO-ROC EXPLORATION LTD.

256 - 409 GRANVILLE ST.

VANCOUVER, BC

V6C 1T2

Project: MOLY-MAY

Comments: CC: J. H. HAJEK

Page No. : 2-A

Tot. Pages: 3

Date : 13-JUL-88

Invoice #: I-8818185

P.O. #: NONE

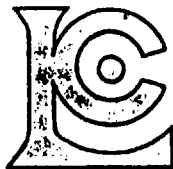
CERTIFICATE OF ANALYSIS A8818185

SAMPLE DESCRIPTION	PREP CODE		Au ppb	Al %	Ag ppm	As ppm	Ba ppm	Be ppm	Bi ppm	Ca %	Cd ppm	Co ppm	Cr ppm	Cu ppm	Fe %	Ga ppm	Hg ppm	K %	La ppm	Mg %	Mn ppm
			PATAA	%	ppm	ppm	ppm	ppm	ppm	%	ppm	ppm	ppm	ppm	%	ppm	ppm	%	ppm	%	ppm
Z-1379	201	238	< 5	0.61	< 0.2	15	30	< 0.5	< 2	0.02	< 0.5	1	14	21	0.35	< 10	< 1	0.08	< 10	0.07	35
Z-1380	201	238	< 5	0.53	< 0.2	< 5	20	< 0.5	< 2	0.02	< 0.5	1	12	78	0.27	< 10	1	0.06	< 10	0.03	29
Z-1381	201	238	10	1.73	< 0.2	< 5	100	< 0.5	< 2	0.03	0.5	3	43	55	1.56	20	< 1	0.18	< 10	0.14	100
Z-1382	201	238	< 5	1.13	< 0.2	15	50	< 0.5	< 2	0.04	< 0.5	< 1	17	115	0.36	10	1	0.08	< 10	0.04	19
Z-1383	201	238	< 5	0.88	< 0.2	< 5	40	< 0.5	< 2	0.02	< 0.5	1	15	64	0.13	< 10	< 1	0.06	< 10	0.03	18
Z-1384	201	238	20	1.15	0.2	5	40	< 0.5	< 2	0.03	< 0.5	2	13	240	0.30	< 10	< 1	0.07	< 10	0.04	22
Z-1385	201	238	15	1.15	< 0.2	10	50	< 0.5	< 2	0.02	< 0.5	1	22	50	0.39	< 10	< 1	0.08	< 10	0.05	30
Z-1386	217	238	20	0.56	0.6	< 5	100	< 0.5	< 2	0.23	2.5	3	13	670	0.59	< 10	1	0.06	< 10	0.04	41
Z-1388	201	238	50	1.64	< 0.2	10	80	< 0.5	< 2	0.05	< 0.5	5	37	186	1.72	< 10	1	0.15	< 10	0.41	142
Z-1389	201	238	< 5	1.06	< 0.2	< 5	50	< 0.5	< 2	0.01	< 0.5	1	21	42	0.30	< 10	< 1	0.10	< 10	0.05	23
Z-1390	201	238	20	1.04	< 0.2	5	40	< 0.5	< 2	0.06	0.5	2	12	418	0.93	< 10	1	0.07	< 10	0.03	52
Z-1391	201	238	10	1.09	< 0.2	10	50	< 0.5	< 2	0.03	< 0.5	2	22	154	1.00	10	1	0.10	< 10	0.13	47
Z-1392	201	238	< 5	1.48	< 0.2	5	60	< 0.5	< 2	0.03	< 0.5	1	46	309	0.61	10	< 1	0.09	< 10	0.11	51
Z-1393	217	238	15	1.68	0.4	10	100	< 0.5	< 2	0.06	< 0.5	2	52	253	0.72	< 10	1	0.21	< 10	0.12	50
Z-1394	201	238	< 5	0.82	< 0.2	10	30	< 0.5	< 2	0.02	< 0.5	2	16	28	0.42	10	< 1	0.07	10	0.05	42
Z-1395	217	238	20	0.89	1.4	< 5	40	< 0.5	< 2	0.13	1.0	2	18	663	1.26	< 10	3	0.11	< 10	0.05	78
2100S 1575E	201	238	< 5	1.39	< 0.2	< 5	60	< 0.5	< 2	0.09	< 0.5	2	19	181	1.04	< 10	2	0.10	< 10	0.11	43
2100S 1600E	201	238	10	0.26	< 0.2	< 5	10	< 0.5	< 2	0.05	< 0.5	< 1	3	11	0.14	< 10	1	0.02	< 10	0.01	37
2100S 1615E	201	238	< 5	3.13	< 0.2	< 5	90	< 0.5	< 2	0.10	< 0.5	12	71	34	3.35	< 10	< 1	0.17	10	1.10	401
2100S 1615E-I	201	238	< 5	3.68	< 0.2	20	130	0.5	< 2	0.08	< 0.5	26	68	38	4.58	< 10	1	0.20	10	1.17	1065
2100S 1650E	201	238	< 5	0.79	< 0.2	5	40	< 0.5	< 2	0.02	< 0.5	1	22	63	0.50	< 10	< 1	0.07	< 10	0.06	35
2200S 1500E	201	238	20	0.58	< 0.2	10	20	< 0.5	8	0.02	< 0.5	2	12	120	0.52	10	< 1	0.05	< 10	0.03	26
2200S 1515E	201	238	5	1.73	< 0.2	< 5	60	< 0.5	4	0.05	< 0.5	3	50	80	1.91	10	< 1	0.11	< 10	0.22	101
2200S 1525E	201	238	< 5	2.05	< 0.2	5	110	< 0.5	< 2	0.17	< 0.5	7	43	41	1.60	< 10	< 1	0.11	10	0.69	231
2200S 1535E	201	238	< 5	0.90	< 0.2	< 5	40	< 0.5	2	0.03	< 0.5	1	20	25	0.32	10	< 1	0.07	< 10	0.07	30
2200S 1550E	201	238	10	0.92	0.4	< 5	40	< 0.5	< 2	0.05	< 0.5	1	13	84	0.60	< 10	< 1	0.09	< 10	0.04	50
2200S 1565E	201	238	5	2.94	< 0.2	25	210	0.5	< 2	0.31	< 0.5	21	66	58	4.91	< 10	< 1	0.28	20	1.33	676
2200S 1585E	201	238	< 5	2.41	< 0.2	15	130	< 0.5	< 2	0.14	< 0.5	11	56	37	2.87	< 10	< 1	0.17	10	0.93	320
2200S 1637E	201	238	< 5	2.07	< 0.2	20	70	< 0.5	< 2	0.06	< 0.2	9	90	45	2.71	10	< 1	0.15	< 10	0.79	359
2200S 1662E	201	238	< 5	1.52	< 0.2	< 5	80	< 0.5	< 2	0.08	0.5	6	61	110	1.96	< 10	< 1	0.15	< 10	0.54	210
2200S 1675E	217	238	< 5	0.34	0.4	5	60	< 0.5	< 2	0.07	2.0	2	52	178	0.31	< 10	< 1	0.06	< 10	0.03	21
2200S 1683E	201	238	10	0.27	< 0.2	20	10	< 0.5	< 2	0.03	< 0.5	2	23	37	1.88	< 10	< 1	0.02	< 10	0.04	24
2200S 1700E	201	238	< 5	0.12	< 0.2	< 5	10	< 0.5	< 2	< 0.01	< 0.5	1	4	12	0.16	< 10	< 1	0.03	20	0.01	10
2200S 1712E	201	238	20	1.72	< 0.2	25	30	< 0.5	< 2	0.01	< 0.5	3	14	51	4.00	< 10	< 1	0.07	10	0.26	114
2200S 1725E	201	238	20	1.28	< 0.2	10	120	< 0.5	< 2	0.24	< 0.5	5	16	28	2.69	< 10	< 1	0.65	10	0.82	609
2200S 1762E	201	238	< 5	0.39	< 0.2	20	60	< 0.5	< 2	0.12	0.5	2	3	156	1.01	< 10	< 1	0.16	< 10	0.21	82
2200S 1775E	201	238	< 5	2.00	< 0.2	5	150	0.5	< 2	0.04	3.0	5	67	91	1.01	< 10	< 1	0.13	10	0.29	64
2200S 1787E	201	238	< 5	1.32	< 0.2	25	130	< 0.5	< 2	< 0.01	< 0.5	3	95	7	2.29	< 10	< 1	0.41	< 10	0.77	96
2200S 1800E	201	238	< 5	0.37	< 0.2	< 5	60	< 0.5	< 2	0.03	< 0.5	1	35	8	0.60	< 10	< 1	0.13	10	0.16	32
2200S 1825E	201	238	< 5	1.94	< 0.2	15	150	< 0.5	< 2	0.02	< 0.5	6	152	57	1.96	< 10	< 1	0.40	< 10	0.90	119

CERTIFICATION

B. Caughlin

D-42



Chemex Labs Ltd.

Analytical Chemists • Geochemists • Registered Assayers

112 BROOKSBANK AVE., NORTH VANCOUVER,
BRITISH COLUMBIA, CANADA V7J-2C1

PHONE (604) 984-0221

To: PACIFIC GEO-ROC EXPLORATION LTD.

256 - 409 GRANVILLE ST.
VANCOUVER, BC
V6C 1T2

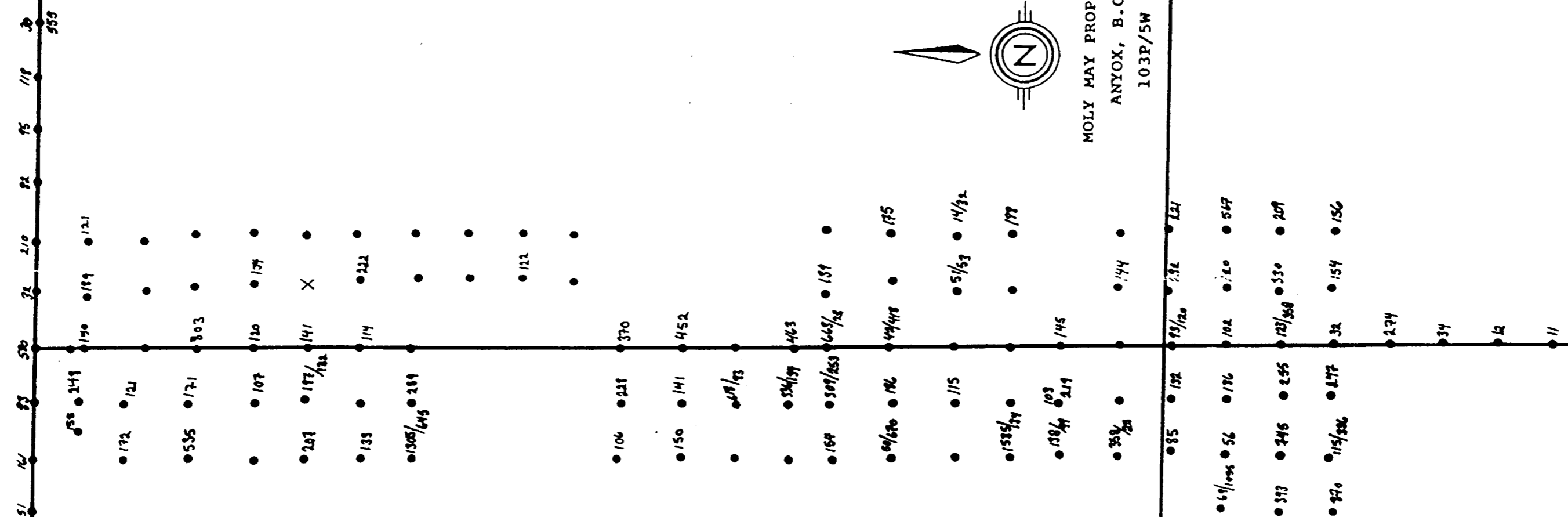
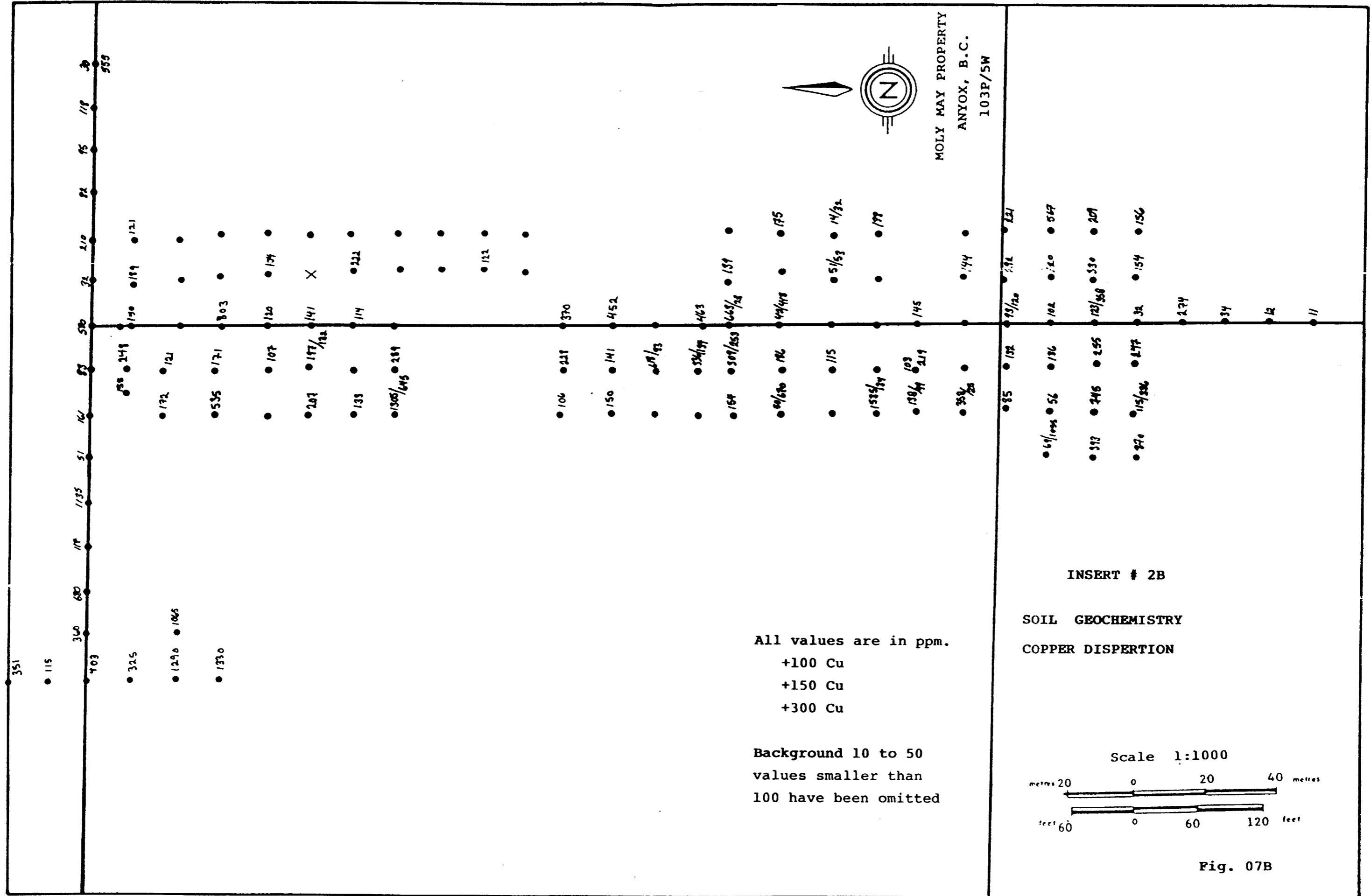
Project: MOLY-MAY
Comments: CC: J H HAJEK

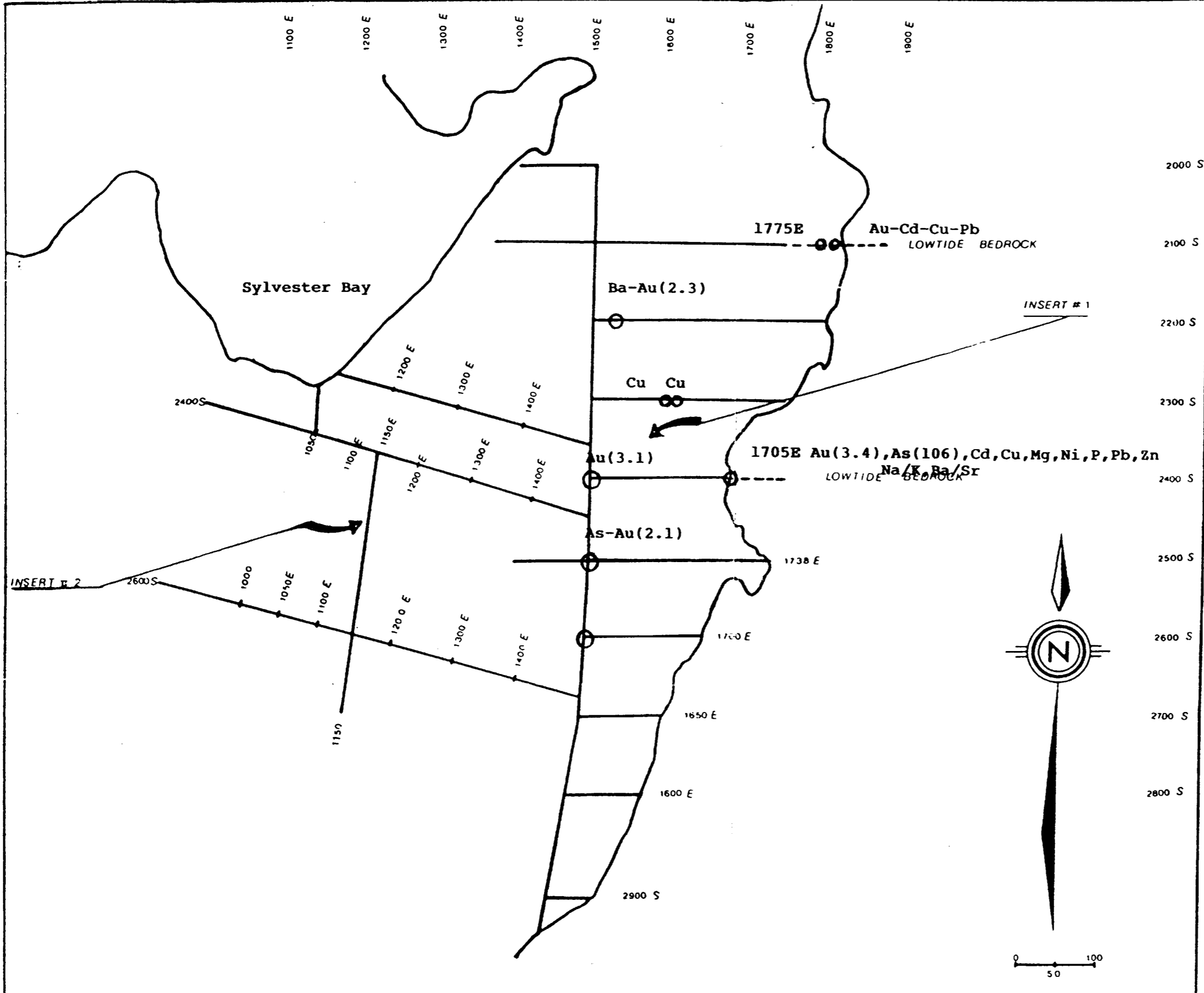
Page No.: 2-B
Tot. Pages: 3
Date: 13-JUL-88
Invoice #: I-8818185
P.O. #: NONE

CERTIFICATE OF ANALYSIS A8818185

SAMPLE DESCRIPTION	PREP CODE	Mb ppm	Na %	Ni ppm	P ppm	Pb ppm	Sb ppm	Sc ppm	Sr ppm	Ti %	Tl ppm	U ppm	V ppm	W ppm	Zn ppm
Z-1379	201 238	2	0.01	1	120	18	< 5	1	5	0.09	< 10	< 10	26	< 5	8
Z-1380	201 238	3	0.04	< 1	210	14	< 5	< 1	3	0.08	< 10	< 10	16	< 5	9
Z-1381	201 238	4	0.01	7	440	46	< 5	2	7	0.19	< 10	< 10	74	< 5	25
Z-1382	201 238	3	0.01	2	250	34	< 5	1	7	0.09	< 10	< 10	25	< 5	19
Z-1383	201 238	3	0.01	< 1	240	18	< 5	< 1	4	0.05	< 10	< 10	16	< 5	6
Z-1384	201 238	3	0.01	2	930	42	< 5	< 1	7	0.03	< 10	< 10	16	< 5	15
Z-1385	201 238	2	0.01	4	350	14	< 5	< 1	5	0.06	< 10	< 10	23	< 5	12
Z-1386	217 238	1	0.01	2	590	30	< 5	< 1	32	0.01	< 10	< 10	6	< 5	101
Z-1388	201 238	1	0.01	18	400	20	< 5	2	8	0.06	< 10	< 10	37	< 5	42
Z-1389	201 238	4	0.01	< 1	210	20	< 5	1	4	0.12	< 10	< 10	27	< 5	8
Z-1390	201 238	3	0.01	2	690	22	< 5	< 1	9	0.04	< 10	< 10	16	< 5	50
Z-1391	201 238	4	0.01	2	250	26	< 5	< 1	5	0.10	< 10	< 10	43	< 5	22
Z-1392	201 238	3	0.01	6	540	44	< 5	1	6	0.22	< 10	< 10	30	5	33
Z-1393	217 238	3	0.02	6	1090	34	< 5	< 1	11	0.04	< 10	< 10	29	< 5	27
Z-1394	201 238	2	0.01	2	150	6	< 5	1	3	0.12	< 10	< 10	33	< 5	8
Z-1395	217 238	2	0.09	4	1170	44	< 5	1	13	0.03	< 10	< 10	10	< 5	61
2100S 1575E	201 238	4	0.01	8	560	28	< 5	1	12	0.05	< 10	< 10	23	< 5	27
2100S 1600E	201 238	2	0.01	1	160	6	< 5	< 1	8	0.01	< 10	< 10	1	< 5	17
2100S 1615E	201 238	1	0.01	43	320	< 2	< 5	6	11	0.09	< 10	< 10	71	< 5	107
2100S 1615E-I	201 238	4	0.02	57	560	6	< 5	10	11	0.10	< 10	< 10	73	5	148
2100S 1650E	201 238	3	0.01	3	190	10	< 5	1	5	0.10	< 10	< 10	23	< 5	16
2200S 1500E	201 238	10	< 0.01	3	140	28	< 5	< 1	3	0.20	< 10	< 10	37	< 5	21
2200S 1515E	201 238	8	0.01	11	380	32	< 5	3	6	0.26	< 10	< 10	67	5	31
2200S 1525E	201 238	5	0.01	26	290	18	< 5	4	19	0.10	< 10	< 10	40	< 5	55
2200S 1535E	201 238	9	0.01	2	170	26	< 5	1	5	0.12	< 10	< 10	23	< 5	10
2200S 1550E	201 238	8	0.01	4	340	22	< 5	1	6	0.08	< 10	< 10	24	< 5	20
2200S 1565E	201 238	4	0.02	72	890	< 2	< 5	9	29	0.11	< 10	< 10	83	5	136
2200S 1585E	201 238	1	0.01	38	600	18	< 5	6	14	0.09	< 10	< 10	58	5	88
2200S 1637E	201 238	2	0.01	28	260	2	< 5	6	6	0.18	< 10	< 10	82	5	113
2200S 1662E	201 238	1	0.01	22	580	12	< 5	3	10	0.11	< 10	< 10	69	5	70
2200S 1675E	217 238	1	0.01	4	510	12	< 5	< 1	21	0.02	< 10	< 10	8	< 5	68
2200S 1683E	201 238	2	< 0.01	7	230	6	< 5	< 1	4	0.27	< 10	< 10	110	< 5	21
2200S 1700E	201 238	3	< 0.01	< 1	70	8	< 5	< 1	1	0.08	< 10	< 10	8	< 5	5
2200S 1712E	201 238	13	0.01	3	330	8	< 5	3	2	0.23	< 10	< 10	119	< 5	101
2200S 1725E	201 238	4	0.07	8	550	2	< 5	7	25	0.16	< 10	< 10	93	65	137
2200S 1762E	201 238	6	0.01	3	210	18	< 5	1	11	0.07	< 10	< 10	41	< 5	49
2200S 1775E	201 238	4	0.01	33	360	10	< 5	3	6	0.10	< 10	< 10	32	< 5	83
2200S 1787E	201 238	2	0.01	15	220	< 2	< 5	4	2	0.27	< 10	< 10	84	5	64
2200S 1800E	201 238	3	0.01	3	100	6	< 5	1	3	0.08	< 10	< 10	25	< 5	23
2200S 1825E	201 238	1	0.01	16	280	6	< 5	6	3	0.21	< 10	< 10	61	5	66

CERTIFICATION:





MOLY MAY PROPERTY
 ANYOX, B.C.
 103P/5W

Western Hemlock sampling
 Inner bark
 BIOGEOCHEMISTRY

○ Au ppb 4 x threshold
 ○ sample location

Fig.08
 Scale 1:5000
 metres 100 0 100 200 metres
 feet 300 0 300 600 feet