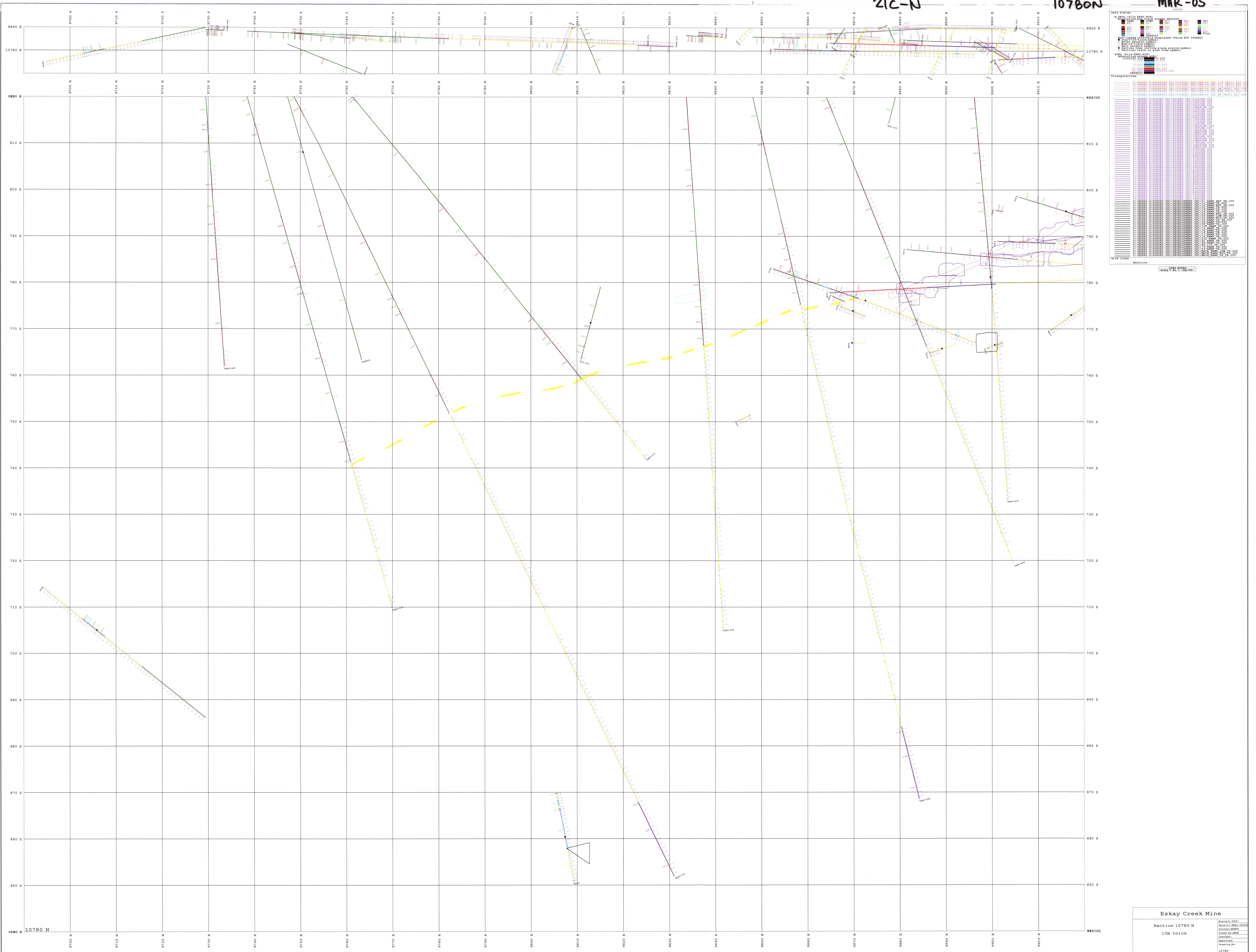


21058

21C-N

10780N

MAR-05



**Data Fields**

- Rock Unit: 1000, 1100, 1200, 1300, 1400, 1500, 1600, 1700, 1800, 1900, 2000, 2100, 2200, 2300, 2400, 2500, 2600, 2700, 2800, 2900, 3000, 3100, 3200, 3300, 3400, 3500, 3600, 3700, 3800, 3900, 4000, 4100, 4200, 4300, 4400, 4500, 4600, 4700, 4800, 4900, 5000, 5100, 5200, 5300, 5400, 5500, 5600, 5700, 5800, 5900, 6000, 6100, 6200, 6300, 6400, 6500, 6600, 6700, 6800, 6900, 7000, 7100, 7200, 7300, 7400, 7500, 7600, 7700, 7800, 7900, 8000, 8100, 8200, 8300, 8400, 8500, 8600, 8700, 8800, 8900, 9000, 9100, 9200, 9300, 9400, 9500, 9600, 9700, 9800, 9900
- Color Legend: Yellow, Green, Purple, Red, Blue, Grey, Black, White
- Scale: 1:10000
- Projection: UTM
- Units: Meters
- Coordinate System: WGS 1984

**Legend**

- 1000: Sandstone
- 1100: Siltstone
- 1200: Shale
- 1300: Claystone
- 1400: Limestone
- 1500: Dolomite
- 1600: Gypsum
- 1700: Anhydrite
- 1800: Halite
- 1900: Rock salt
- 2000: Evaporite
- 2100: Carbonate
- 2200: Silicate
- 2300: Metasedimentary
- 2400: Metavolcanic
- 2500: Intrusive
- 2600: Extrusive
- 2700: Volcanic
- 2800: Sedimentary
- 2900: Unconsolidated
- 3000: Alluvium
- 3100: Colluvium
- 3200: Glacial drift
- 3300: Quaternary
- 3400: Pleistocene
- 3500: Holocene
- 3600: Recent
- 3700: Modern
- 3800: Contemporary
- 3900: Current
- 4000: Present
- 4100: Future
- 4200: Potential
- 4300: Hypothetical
- 4400: Speculative
- 4500: Uncertain
- 4600: Unknown
- 4700: Undefined
- 4800: Unlabeled
- 4900: Unnamed
- 5000: Unidentified
- 5100: Unrecognized
- 5200: Unfamiliar
- 5300: Unusual
- 5400: Uncommon
- 5500: Unlikely
- 5600: Unprobable
- 5700: Unreasonable
- 5800: Unrealistic
- 5900: Unfeasible
- 6000: Unworkable
- 6100: Unviable
- 6200: Unpractical
- 6300: Unconventional
- 6400: Unorthodox
- 6500: Unconformable
- 6600: Unconformable
- 6700: Unconformable
- 6800: Unconformable
- 6900: Unconformable
- 7000: Unconformable
- 7100: Unconformable
- 7200: Unconformable
- 7300: Unconformable
- 7400: Unconformable
- 7500: Unconformable
- 7600: Unconformable
- 7700: Unconformable
- 7800: Unconformable
- 7900: Unconformable
- 8000: Unconformable
- 8100: Unconformable
- 8200: Unconformable
- 8300: Unconformable
- 8400: Unconformable
- 8500: Unconformable
- 8600: Unconformable
- 8700: Unconformable
- 8800: Unconformable
- 8900: Unconformable
- 9000: Unconformable
- 9100: Unconformable
- 9200: Unconformable
- 9300: Unconformable
- 9400: Unconformable
- 9500: Unconformable
- 9600: Unconformable
- 9700: Unconformable
- 9800: Unconformable
- 9900: Unconformable

**Eskay Creek Mine**

Section 10780 N  
10m thick

Drawn by: [Name]  
Checked by: [Name]  
Approved by: [Name]  
Date: [Date]