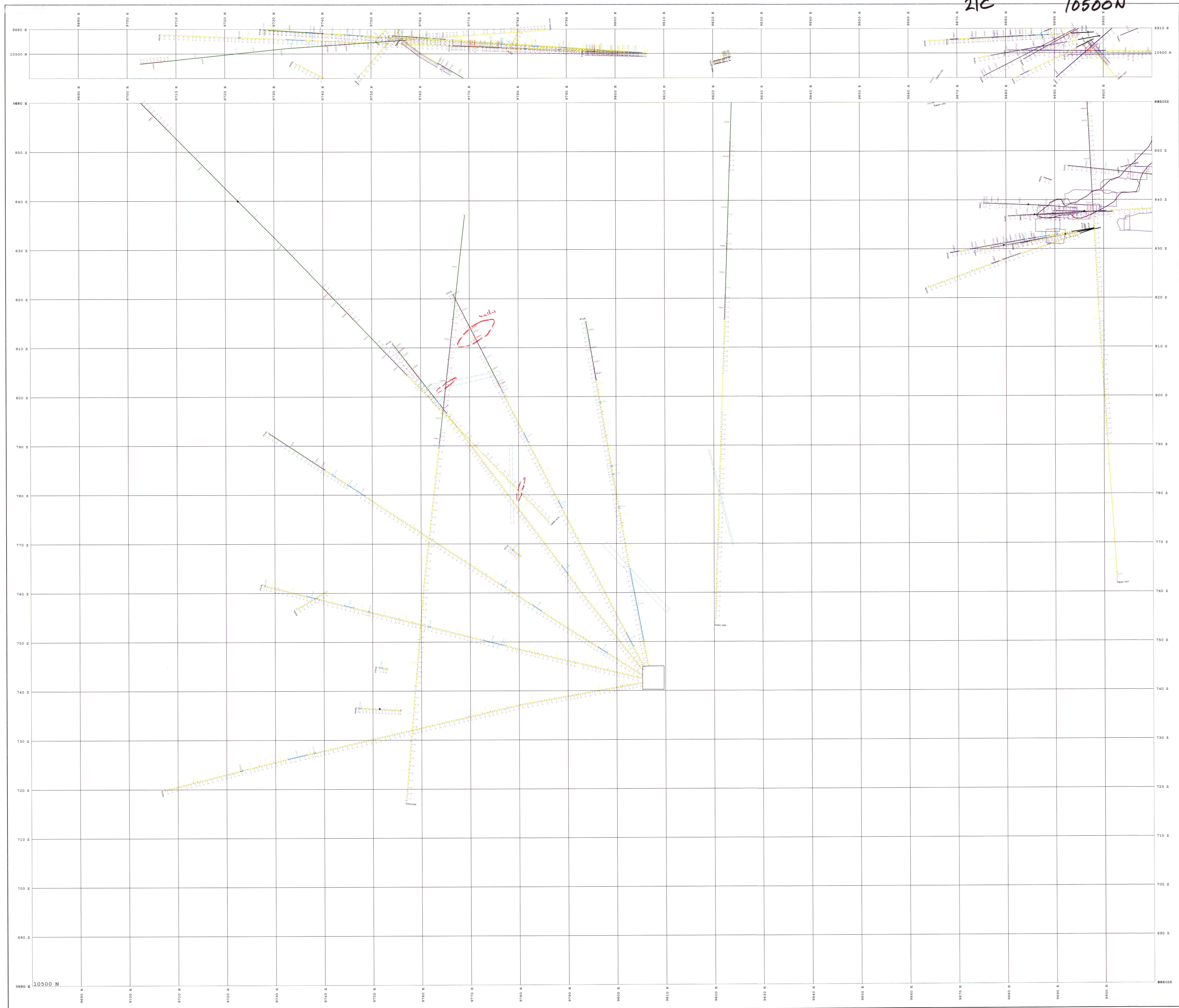


21C56
21C

10500N

FEB-05



Data Table

Symbol	Color	Value	Unit
1	Red	100	mm
2	Green	200	mm
3	Blue	300	mm
4	Yellow	400	mm
5	Purple	500	mm
6	Black	600	mm
7	White	700	mm
8	Grey	800	mm
9	Light Blue	900	mm
10	Light Green	1000	mm
11	Light Yellow	1100	mm
12	Light Purple	1200	mm
13	Light Black	1300	mm
14	Light Grey	1400	mm
15	Light Light Blue	1500	mm
16	Light Light Green	1600	mm
17	Light Light Yellow	1700	mm
18	Light Light Purple	1800	mm
19	Light Light Black	1900	mm
20	Light Light Grey	2000	mm

Triangulation

Station	Easting	Northing	Height
1	9700	750	100
2	9710	760	110
3	9720	770	120
4	9730	780	130
5	9740	790	140
6	9750	800	150
7	9760	810	160
8	9770	820	170
9	9780	830	180
10	9790	840	190
11	9800	850	200
12	9810	860	210
13	9820	870	220
14	9830	880	230
15	9840	890	240
16	9850	900	250
17	9860	910	260
18	9870	920	270
19	9880	930	280
20	9890	940	290
21	9900	950	300
22	9910	960	310
23	9920	970	320
24	9930	980	330
25	9940	990	340
26	9950	1000	350
27	9960	1010	360
28	9970	1020	370
29	9980	1030	380
30	9990	1040	390
31	10000	1050	400

DETAILED TABLE

Station	Easting	Northing	Height	Remarks
1	9700	750	100	
2	9710	760	110	
3	9720	770	120	
4	9730	780	130	
5	9740	790	140	
6	9750	800	150	
7	9760	810	160	
8	9770	820	170	
9	9780	830	180	
10	9790	840	190	
11	9800	850	200	
12	9810	860	210	
13	9820	870	220	
14	9830	880	230	
15	9840	890	240	
16	9850	900	250	
17	9860	910	260	
18	9870	920	270	
19	9880	930	280	
20	9890	940	290	
21	9900	950	300	
22	9910	960	310	
23	9920	970	320	
24	9930	980	330	
25	9940	990	340	
26	9950	1000	350	
27	9960	1010	360	
28	9970	1020	370	
29	9980	1030	380	
30	9990	1040	390	
31	10000	1050	400	

Eskay Creek Mine
21C Section 10500 N
10m thick
Date: 02-Feb-2005
Drawn: J. [Name]
Checked: [Name]
Approved: [Name]
Drawing No.: 10500