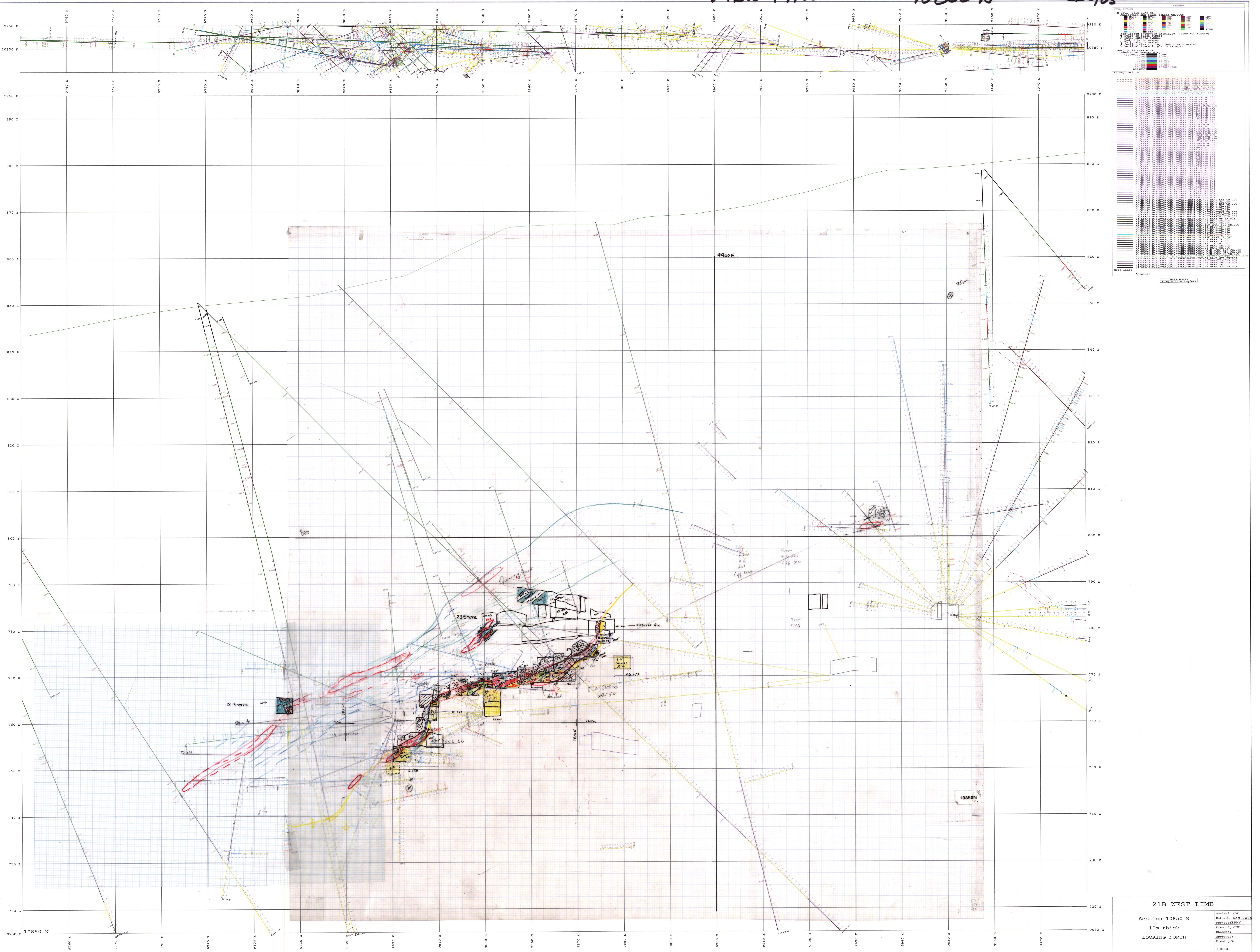


21B 66
21BW + HW

10850 N

DEC/03



Legend

Fault Type

- Normal
- Reverse
- Strike
- Oblique
- Unknown

Fault Sense

- Left
- Right
- Unknown

Fault Strike

- North-South
- East-West
- Other

Fault Dip

- Vertical
- Other

Fault Length

- Long
- Short

Fault Width

- Wide
- Narrow

Fault Area

- Large
- Small

Fault Volume

- High
- Low

Fault Weight

- Heavy
- Light

Fault Color

- Red
- Blue
- Green
- Yellow
- Purple
- Black

Fault Style

- Solid
- Dashed
- Dotted
- Long Dash
- Short Dash

Fault Dash

- Single
- Double
- Triple

Fault Dot

- Large
- Small

Fault Circle

- Large
- Small

Fault Square

- Large
- Small

Fault Triangle

- Large
- Small

Fault Diamond

- Large
- Small

Fault Hexagon

- Large
- Small

Fault Star

- Large
- Small

Fault Cross

- Large
- Small

Fault Plus

- Large
- Small

Fault Minus

- Large
- Small

Fault Asterisk

- Large
- Small

Fault Hash

- Large
- Small

Fault Dollar

- Large
- Small

Fault Percent

- Large
- Small

Fault Ampersand

- Large
- Small

Fault At

- Large
- Small

Fault Hash

- Large
- Small

Fault Dollar

- Large
- Small

Fault Percent

- Large
- Small

Fault Ampersand

- Large
- Small

Fault At

- Large
- Small

21B WEST LIMB

Section 10850 N

10m thick

LOOKING NORTH

Scale: 1:250

Date: 01-Dec-2003

Project: 21B

Drawn by: JDS

Checked: [Signature]

Approved: [Signature]

Drawing No.: 10850