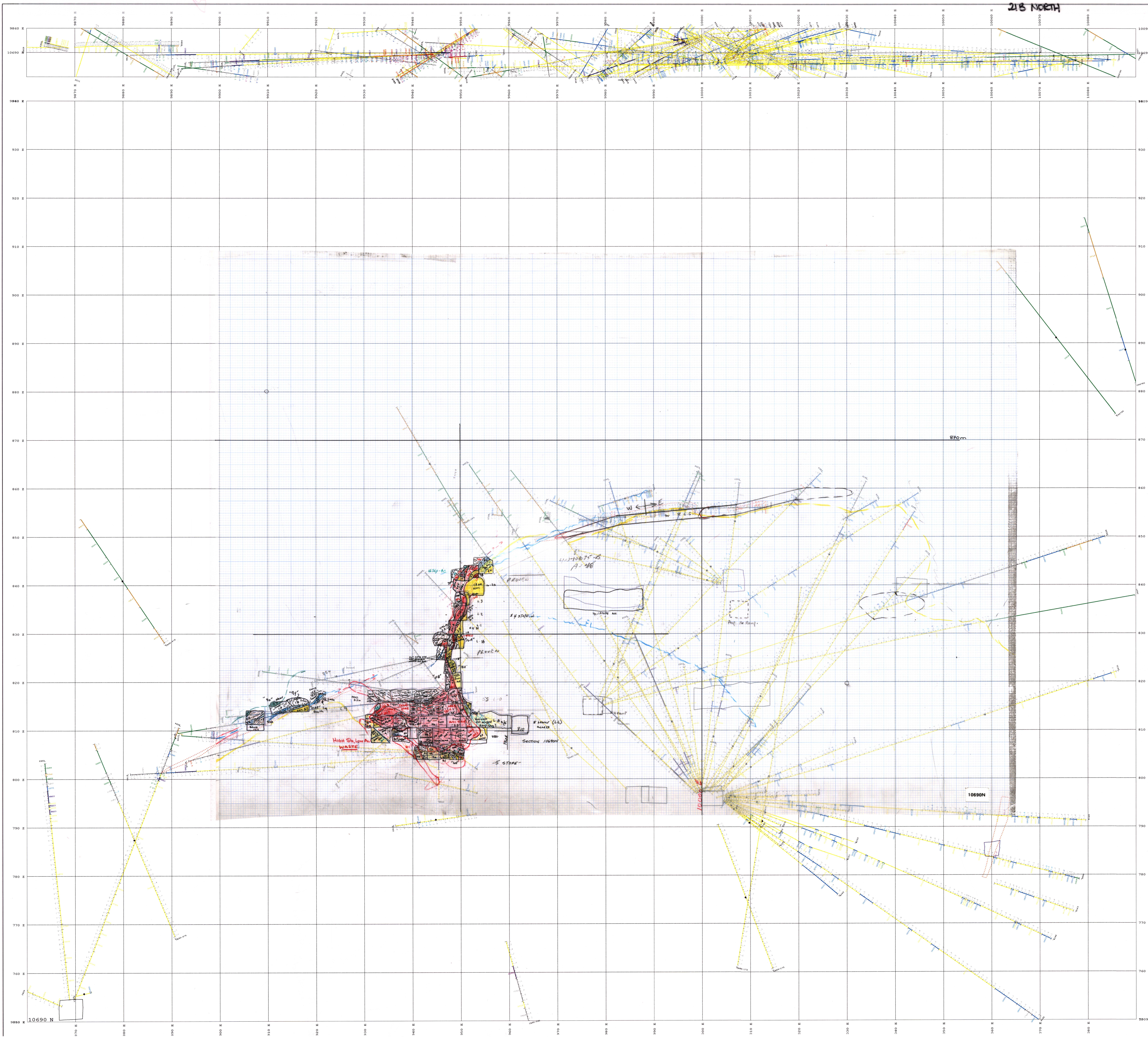


21B 50

21B NORTH

10690N DEC-04



| UNIT | DESCRIPTION | THICKNESS (m) | START (N) | END (N) | START (E) | END (E) |
|------|-------------|---------------|-----------|---------|-----------|---------|
| 1 | CLAY | 0.5 | 9870 | 9875 | 9870 | 9875 |
| 2 | SAND | 1.5 | 9875 | 9880 | 9870 | 9880 |
| 3 | GRAVEL | 0.5 | 9880 | 9885 | 9870 | 9885 |
| 4 | CLAY | 0.5 | 9885 | 9890 | 9870 | 9890 |
| 5 | SAND | 1.5 | 9890 | 9895 | 9870 | 9895 |
| 6 | GRAVEL | 0.5 | 9895 | 9900 | 9870 | 9900 |
| 7 | CLAY | 0.5 | 9900 | 9905 | 9870 | 9905 |
| 8 | SAND | 1.5 | 9905 | 9910 | 9870 | 9910 |
| 9 | GRAVEL | 0.5 | 9910 | 9915 | 9870 | 9915 |
| 10 | CLAY | 0.5 | 9915 | 9920 | 9870 | 9920 |
| 11 | SAND | 1.5 | 9920 | 9925 | 9870 | 9925 |
| 12 | GRAVEL | 0.5 | 9925 | 9930 | 9870 | 9930 |
| 13 | CLAY | 0.5 | 9930 | 9935 | 9870 | 9935 |
| 14 | SAND | 1.5 | 9935 | 9940 | 9870 | 9940 |
| 15 | GRAVEL | 0.5 | 9940 | 9945 | 9870 | 9945 |
| 16 | CLAY | 0.5 | 9945 | 9950 | 9870 | 9950 |
| 17 | SAND | 1.5 | 9950 | 9955 | 9870 | 9955 |
| 18 | GRAVEL | 0.5 | 9955 | 9960 | 9870 | 9960 |
| 19 | CLAY | 0.5 | 9960 | 9965 | 9870 | 9965 |
| 20 | SAND | 1.5 | 9965 | 9970 | 9870 | 9970 |
| 21 | GRAVEL | 0.5 | 9970 | 9975 | 9870 | 9975 |
| 22 | CLAY | 0.5 | 9975 | 9980 | 9870 | 9980 |
| 23 | SAND | 1.5 | 9980 | 9985 | 9870 | 9985 |
| 24 | GRAVEL | 0.5 | 9985 | 9990 | 9870 | 9990 |
| 25 | CLAY | 0.5 | 9990 | 9995 | 9870 | 9995 |
| 26 | SAND | 1.5 | 9995 | 10000 | 9870 | 10000 |
| 27 | GRAVEL | 0.5 | 10000 | 10005 | 9870 | 10005 |
| 28 | CLAY | 0.5 | 10005 | 10010 | 9870 | 10010 |
| 29 | SAND | 1.5 | 10010 | 10015 | 9870 | 10015 |
| 30 | GRAVEL | 0.5 | 10015 | 10020 | 9870 | 10020 |
| 31 | CLAY | 0.5 | 10020 | 10025 | 9870 | 10025 |
| 32 | SAND | 1.5 | 10025 | 10030 | 9870 | 10030 |
| 33 | GRAVEL | 0.5 | 10030 | 10035 | 9870 | 10035 |
| 34 | CLAY | 0.5 | 10035 | 10040 | 9870 | 10040 |
| 35 | SAND | 1.5 | 10040 | 10045 | 9870 | 10045 |
| 36 | GRAVEL | 0.5 | 10045 | 10050 | 9870 | 10050 |
| 37 | CLAY | 0.5 | 10050 | 10055 | 9870 | 10055 |
| 38 | SAND | 1.5 | 10055 | 10060 | 9870 | 10060 |
| 39 | GRAVEL | 0.5 | 10060 | 10065 | 9870 | 10065 |
| 40 | CLAY | 0.5 | 10065 | 10070 | 9870 | 10070 |
| 41 | SAND | 1.5 | 10070 | 10075 | 9870 | 10075 |
| 42 | GRAVEL | 0.5 | 10075 | 10080 | 9870 | 10080 |
| 43 | CLAY | 0.5 | 10080 | 10085 | 9870 | 10085 |
| 44 | SAND | 1.5 | 10085 | 10090 | 9870 | 10090 |
| 45 | GRAVEL | 0.5 | 10090 | 10095 | 9870 | 10095 |
| 46 | CLAY | 0.5 | 10095 | 10100 | 9870 | 10100 |
| 47 | SAND | 1.5 | 10100 | 10105 | 9870 | 10105 |
| 48 | GRAVEL | 0.5 | 10105 | 10110 | 9870 | 10110 |
| 49 | CLAY | 0.5 | 10110 | 10115 | 9870 | 10115 |
| 50 | SAND | 1.5 | 10115 | 10120 | 9870 | 10120 |

21B WEST LIMB
 Section 10690 N
 10m thick
 Looking North