

OG 12
OBLQ # 12

MAR. 05

Legend

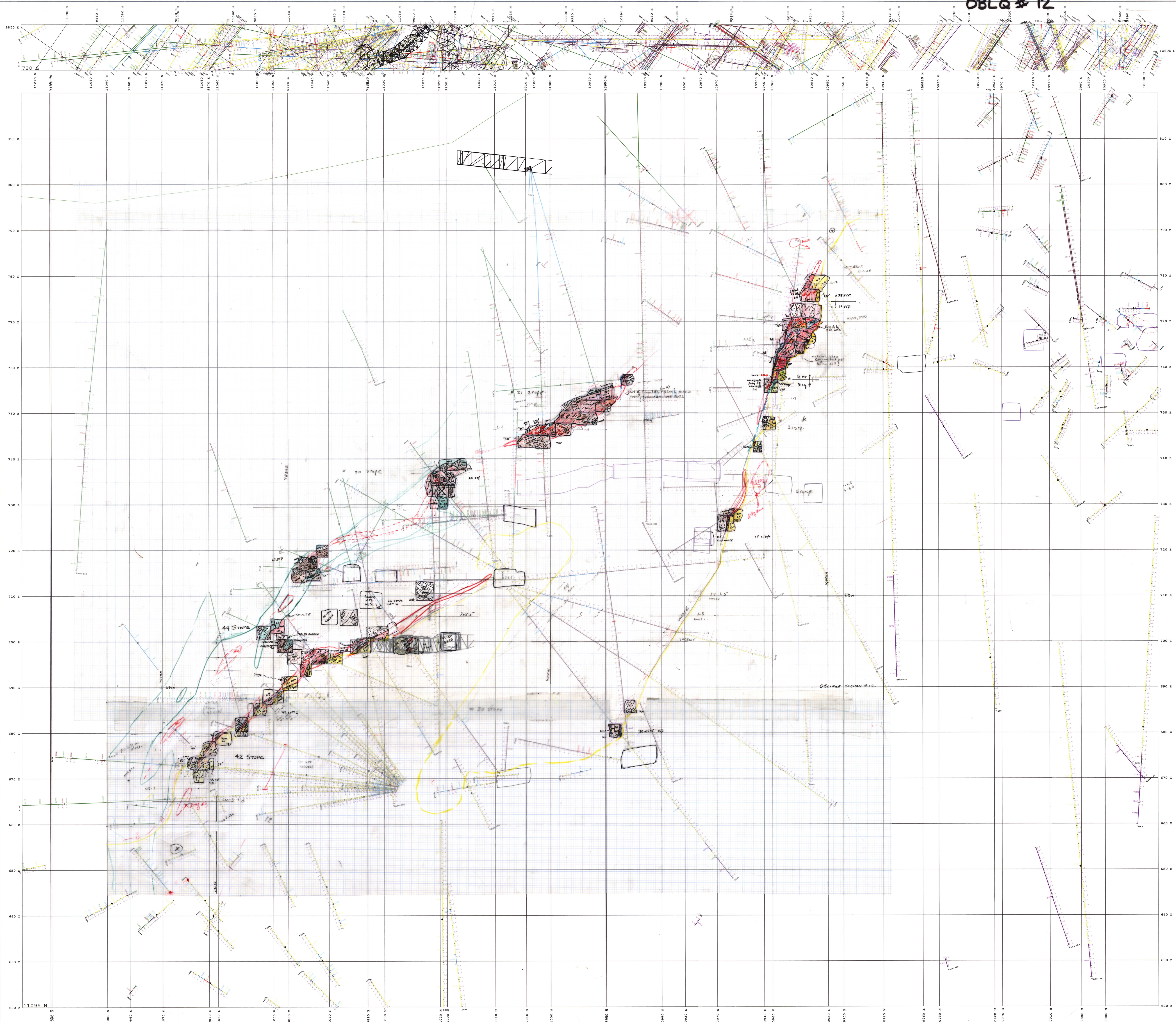
- 1. 2000' 10" (1000m) grid
- 2. 1000' 10" (500m) grid
- 3. 500' 10" (250m) grid
- 4. 250' 10" (125m) grid
- 5. 125' 10" (62.5m) grid
- 6. 62.5' 10" (31.25m) grid
- 7. 31.25' 10" (15.625m) grid
- 8. 15.625' 10" (7.8125m) grid
- 9. 7.8125' 10" (3.90625m) grid
- 10. 3.90625' 10" (1.953125m) grid
- 11. 1.953125' 10" (0.9765625m) grid
- 12. 0.9765625' 10" (0.48828125m) grid
- 13. 0.48828125' 10" (0.244140625m) grid
- 14. 0.244140625' 10" (0.1220703125m) grid
- 15. 0.1220703125' 10" (0.06103515625m) grid
- 16. 0.06103515625' 10" (0.030517578125m) grid
- 17. 0.030517578125' 10" (0.0152587890625m) grid
- 18. 0.0152587890625' 10" (0.00762939453125m) grid
- 19. 0.00762939453125' 10" (0.003814697265625m) grid
- 20. 0.003814697265625' 10" (0.0019073486328125m) grid
- 21. 0.0019073486328125' 10" (0.00095367431640625m) grid
- 22. 0.00095367431640625' 10" (0.000476837158203125m) grid
- 23. 0.000476837158203125' 10" (0.0002384185791015625m) grid
- 24. 0.0002384185791015625' 10" (0.00011920928955078125m) grid
- 25. 0.00011920928955078125' 10" (5.9604644775390625e-05m) grid

Line Styles

- 1. 1000' 10" (500m) grid
- 2. 500' 10" (250m) grid
- 3. 250' 10" (125m) grid
- 4. 125' 10" (62.5m) grid
- 5. 62.5' 10" (31.25m) grid
- 6. 31.25' 10" (15.625m) grid
- 7. 15.625' 10" (7.8125m) grid
- 8. 7.8125' 10" (3.90625m) grid
- 9. 3.90625' 10" (1.953125m) grid
- 10. 1.953125' 10" (0.9765625m) grid
- 11. 0.9765625' 10" (0.48828125m) grid
- 12. 0.48828125' 10" (0.244140625m) grid
- 13. 0.244140625' 10" (0.1220703125m) grid
- 14. 0.1220703125' 10" (0.06103515625m) grid
- 15. 0.06103515625' 10" (0.030517578125m) grid
- 16. 0.030517578125' 10" (0.0152587890625m) grid
- 17. 0.0152587890625' 10" (0.00762939453125m) grid
- 18. 0.00762939453125' 10" (0.003814697265625m) grid
- 19. 0.003814697265625' 10" (0.0019073486328125m) grid
- 20. 0.0019073486328125' 10" (0.00095367431640625m) grid
- 21. 0.00095367431640625' 10" (0.000476837158203125m) grid
- 22. 0.000476837158203125' 10" (0.0002384185791015625m) grid
- 23. 0.0002384185791015625' 10" (0.00011920928955078125m) grid
- 24. 0.00011920928955078125' 10" (5.9604644775390625e-05m) grid

Other Symbols

- 1. 1000' 10" (500m) grid
- 2. 500' 10" (250m) grid
- 3. 250' 10" (125m) grid
- 4. 125' 10" (62.5m) grid
- 5. 62.5' 10" (31.25m) grid
- 6. 31.25' 10" (15.625m) grid
- 7. 15.625' 10" (7.8125m) grid
- 8. 7.8125' 10" (3.90625m) grid
- 9. 3.90625' 10" (1.953125m) grid
- 10. 1.953125' 10" (0.9765625m) grid
- 11. 0.9765625' 10" (0.48828125m) grid
- 12. 0.48828125' 10" (0.244140625m) grid
- 13. 0.244140625' 10" (0.1220703125m) grid
- 14. 0.1220703125' 10" (0.06103515625m) grid
- 15. 0.06103515625' 10" (0.030517578125m) grid
- 16. 0.030517578125' 10" (0.0152587890625m) grid
- 17. 0.0152587890625' 10" (0.00762939453125m) grid
- 18. 0.00762939453125' 10" (0.003814697265625m) grid
- 19. 0.003814697265625' 10" (0.0019073486328125m) grid
- 20. 0.0019073486328125' 10" (0.00095367431640625m) grid
- 21. 0.00095367431640625' 10" (0.000476837158203125m) grid
- 22. 0.000476837158203125' 10" (0.0002384185791015625m) grid
- 23. 0.0002384185791015625' 10" (0.00011920928955078125m) grid
- 24. 0.00011920928955078125' 10" (5.9604644775390625e-05m) grid



Eskay Creek Mine

SECTION: 12
10m thick
Looking Northeast

Scale: 1:1250
Date: 13-Mar-2005
Project: ESKAY
Drawn by: ESM
Checked by:
Approved by:
Revision No.:
SPECF12000