

3 months
 1/23/1946

COORDINATES S.W. NODAWAY - 600

S.W. Nodaway

0 - 1	N10° 22'E	155.3	-150.8	+ 27.7
2	S10° 34'W	323.5	-468.8	- 314.6
3	S59° 36'W	148.3	- 554.0	- 176.8
4	S59° 57'W	184.4	- 621.3	- 292.1
5	S24° 44'W	389.3	- 916.6	- 487.8
6	S25° 47'W	128.7	-1032.5	- 553.9
7	N19° 22'W	181.8	-1204.0	- 614.1
8	S42° 08'W	207.8	-1300.3	- 797.9
9	S61° 54'W	288.0	-1435.9	-1051.6
10	S67° 11'W	285.4	-1546.6	-1314.7
11	S85° 26'W	371.0	-1576.1	-1684.4
12	S49° 51'W	412.6	-1842.1	-1999.8
13	S56° 47'W	318.0	-2016.8	-2265.5

No. 1 Tunnel

Sta. 2		-468.8	- 314.6
A	N67° 16'E	70.1	-441.7 + 33.0
B	N72° 56'E	37.8	-430.6 + 45.2
C	S71° 23'E	92.3	-439.6 + 96.0
D	N74° 27'E	20.2	-424.3 + 115.5
E	S89° 40'E	45.8	-434.6 + 160.7
F	N27° 49'E	49.1	-391.2 + 183.6
G	N64° 5'E	23.7	-381.1 + 205.0
H	N31° 41'E	22.5	-350.9 + 217.0
Face	N61° 44'E	56.0	-324.4 + 266.3

B - B'	N19° 22'E	38.6	-394.2 + 82.0
B'	N16° 55'W	45.0	-351.2 + 68.9
Face	N22° 52'E	29.0	-323.6 + 80.5

No. 2 Tunnel

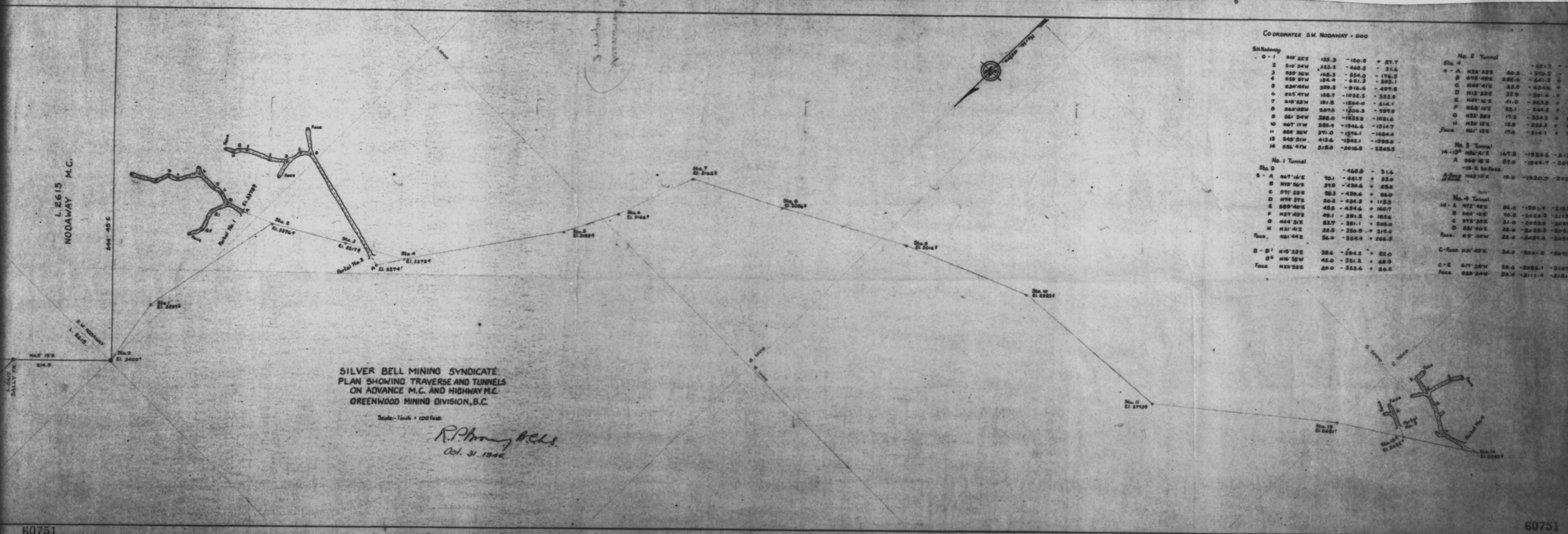
Sta. 4		-621.3	- 292.1
A	N32° 32'E	60.2	-570.5 - 260.9
B	S75° 49'E	288.4	-641.2 + 38.9
C	N44° 47'E	23.8	-624.6 + 38.4
D	N13° 33'E	33.9	-591.6 + 48.3
E	N47° 16'E	41.0	-563.8 + 73.4
F	N68° 18'E	52.1	-544.3 + 121.8
G	N52° 30'E	17.2	-534.3 + 135.2
H	N30° 15'E	18.8	-523.3 + 142.1
Face	N61° 15'E	17.0	-514.1 + 157.0

No. 3 Tunnel

14 - 13'	N86° 41'E	167.8	-1924.6 - 2122.3
A	S68° 15'E	57.0	-1844.7 - 2072.0
Face	N42° 10'E	19.0	-1820.5 - 2029.0

No. 4 Tunnel

14 - A	N72° 48'E	95.0	-1991.4 - 2163.4
B	S64° 12'E	70.3	-2023.2 - 2115.7
C	S78° 35'E	31.0	-2023.0 - 2099.7
D	S81° 46'E	28.0	-2025.3 - 2052.1
Face	S5° 20'W	22.0	-2037.2 - 2084.1
C - Face	N3° 42'E	34.0	-2001.0 - 2071.8
C - E	S17° 20'W	50.0	-2086.1 - 2107.4
Face	S22° 30'W	29.0	-2111.4 - 2121.6



SILVER BELL MINING SYNDICATE
 PLAN SHOWING TRAVERSE AND TUNNELS
 ON ADVANCE M.C. AND HIGHWAY M.C.
 GREENWOOD MINING DIVISION, B.C.

Scale - 1 inch = 100 feet

R.P. Brown B.C.S.
 Oct. 31, 1946