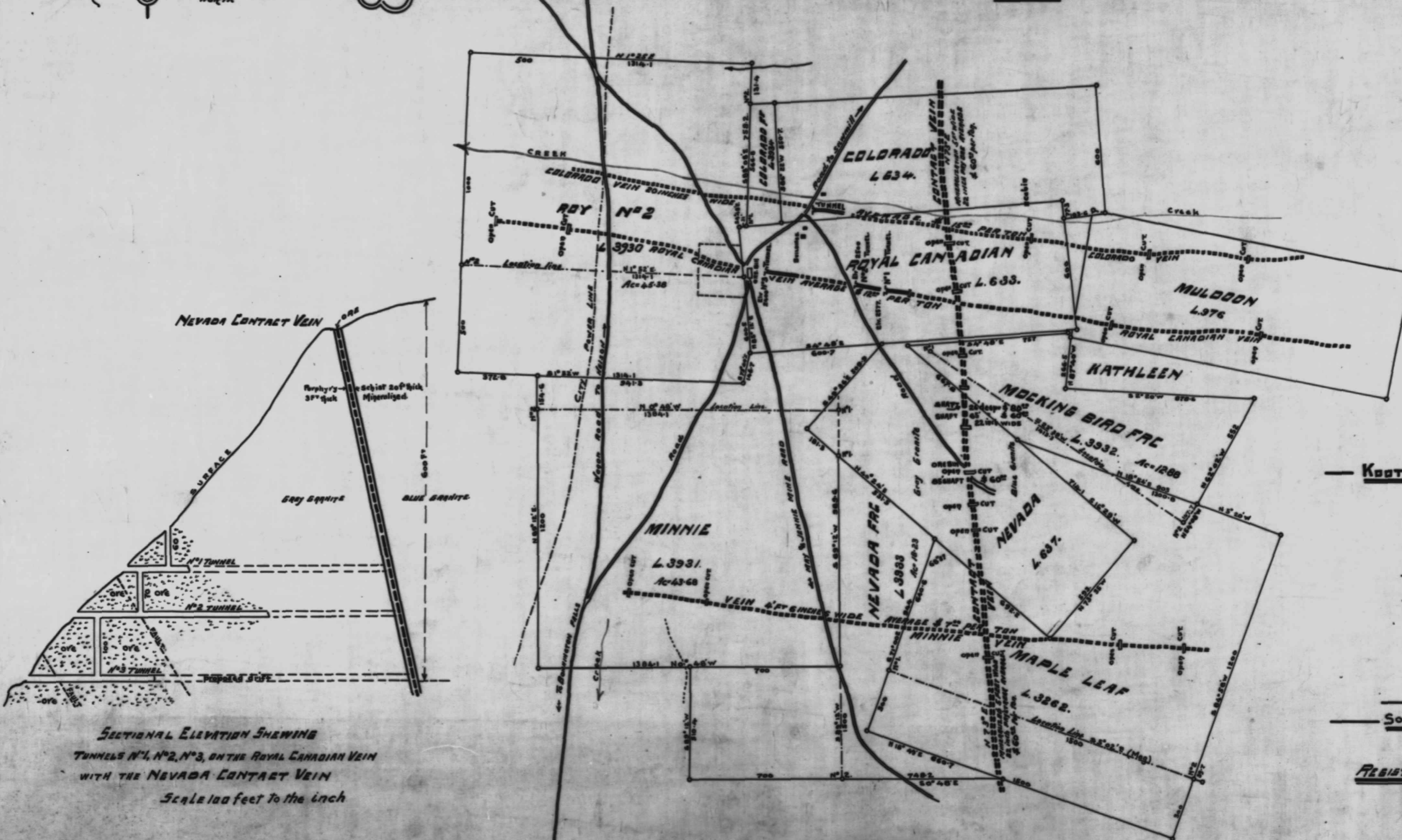
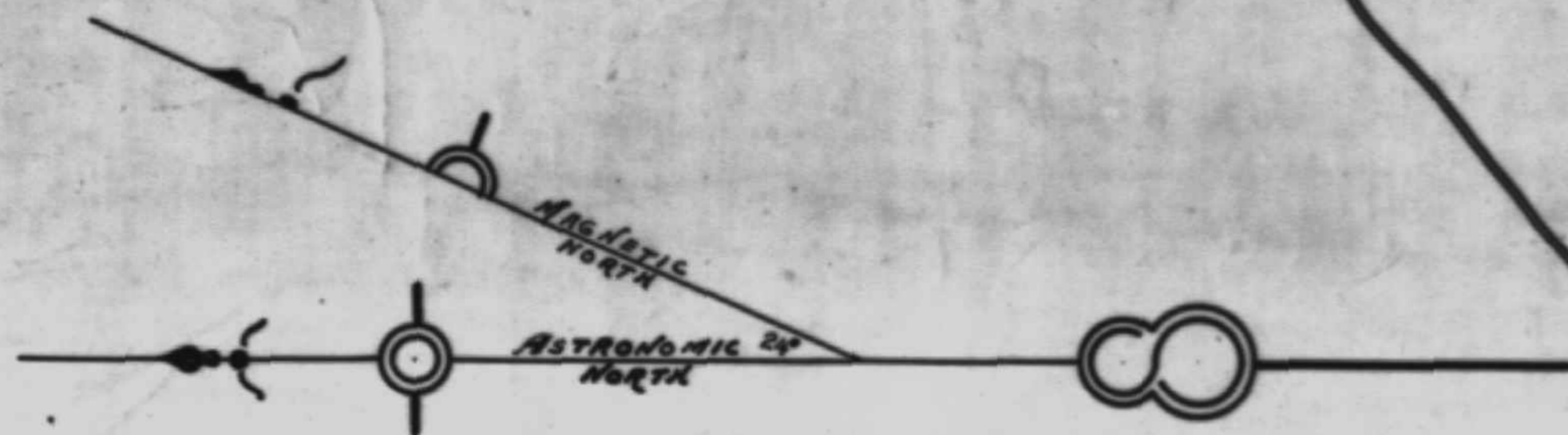


PROPERTY OF THE KOOTENAY PREMIER MINES LTD.

SITUATED IN THE NELSON MINING DIVISION

WEST KOOTENAY DIST

B.C.



SECTIONAL ELEVATION SHOWING
TUNNELS N°1, N°2, N°3, ON THE ROYAL CANADIAN VEIN
WITH THE NEVADA CONTACT VEIN
Scale 100 feet to the inch

Scale 300 Feet to an inch

KOOTENAY PREMIER MINES LTD.

OFFICERS

JOHN GANSNER, D.D.S. President.
A.G. NORCROSS, Vice President.
J.M. Kim MILLER Sec. Treasurer.

DIRECTORS

FRED. A. STARKEY.
THOMAS C. CUMMINS.
JOHN GANSNER, D.D.S.
ALBERT G. NORCROSS.
ARCHIBALD DONAGHY, SOLICITOR.
J.M. Kim MILLER.
J.S. Mc INNES
S.A. CURWIN

SOLICITOR FOR THE COMPANY

ARCHIBALD DONAGHY ESQ

REGISTERED OFFICE 515 BAKER ST. NELSON, B.C.