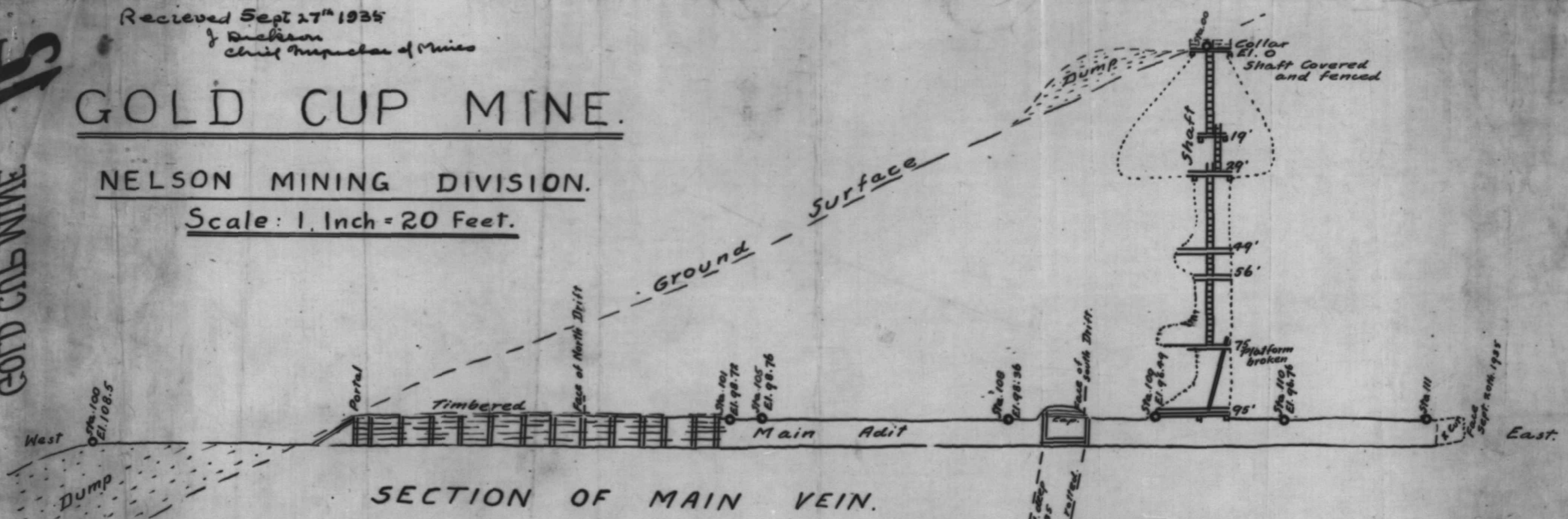


Received Sept 27<sup>th</sup> 1935  
J. Dickson  
Chief Inspector of Mines

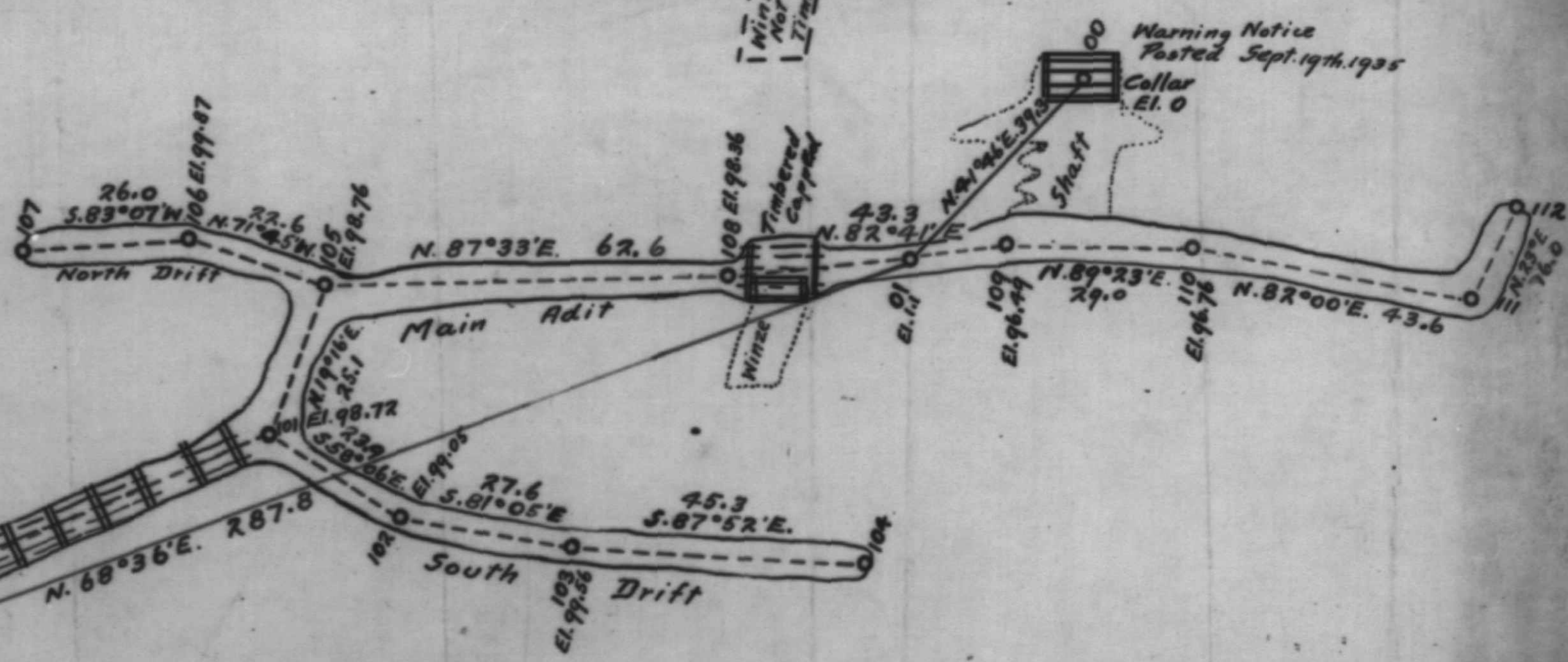
# GOLD CUP MINE.

NELSON MINING DIVISION.

Scale: 1. Inch = 20 Feet.



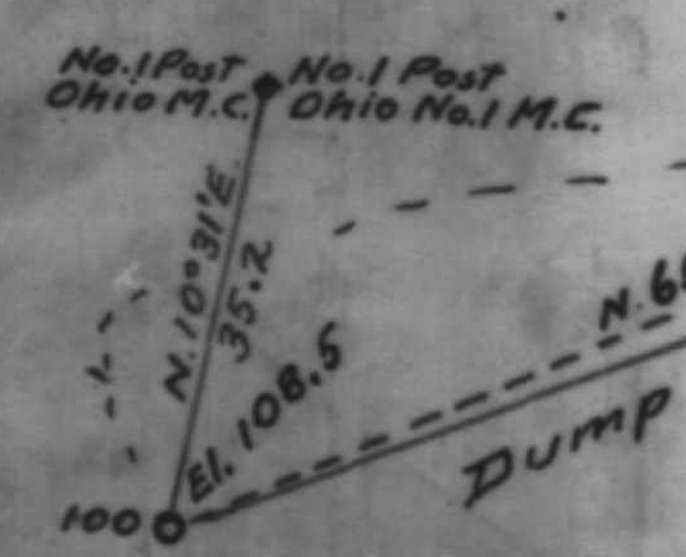
## SECTION OF MAIN VEIN.



## PLAT OF WORKINGS.

Closed down this section Sept. 17th. 1935

M. W. Haggan  
D.S.: M.S. L.S.  
Nelson, B.C. Sept. 20th. 1935



GOLD CUP MINE

GOLD CUP MINE