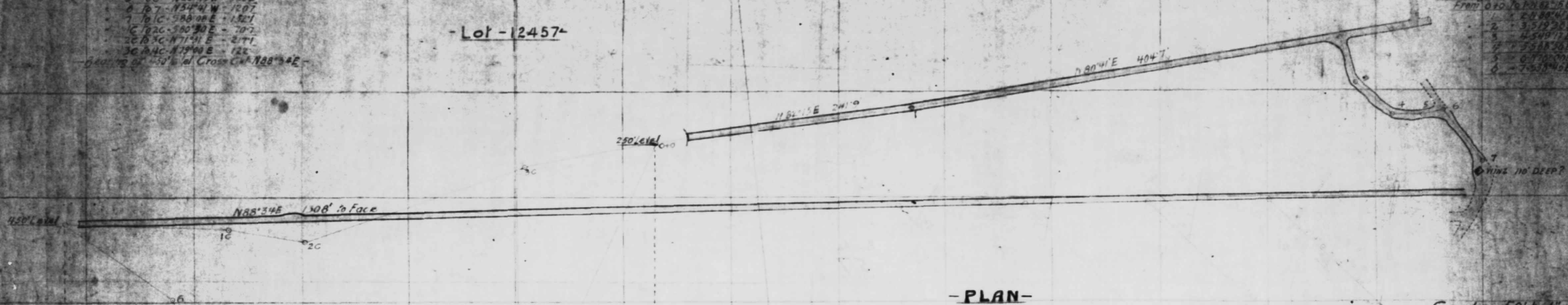


Bearings of the Lines -
 From 0+0 to 1+0
 1. 102 - N58°31'N - 92.6
 2. 103 - S20°37'N - 15.2
 3. 104 - S5°38'E - 10.1
 4. 105 - S40°20'N - 13.2
 5. 106 - N22°49'N - 3.02
 6. 107 - N54°4'W - 12.07
 7. 108 - S88°08'E - 13.21
 8. 109 - S10°30'E - 10.7
 9. 110 - N71°41'E - 2.11
 10. 111 - N79°00'E - 12.2
 Bearings of 50' level Cross Cut N88°34'E

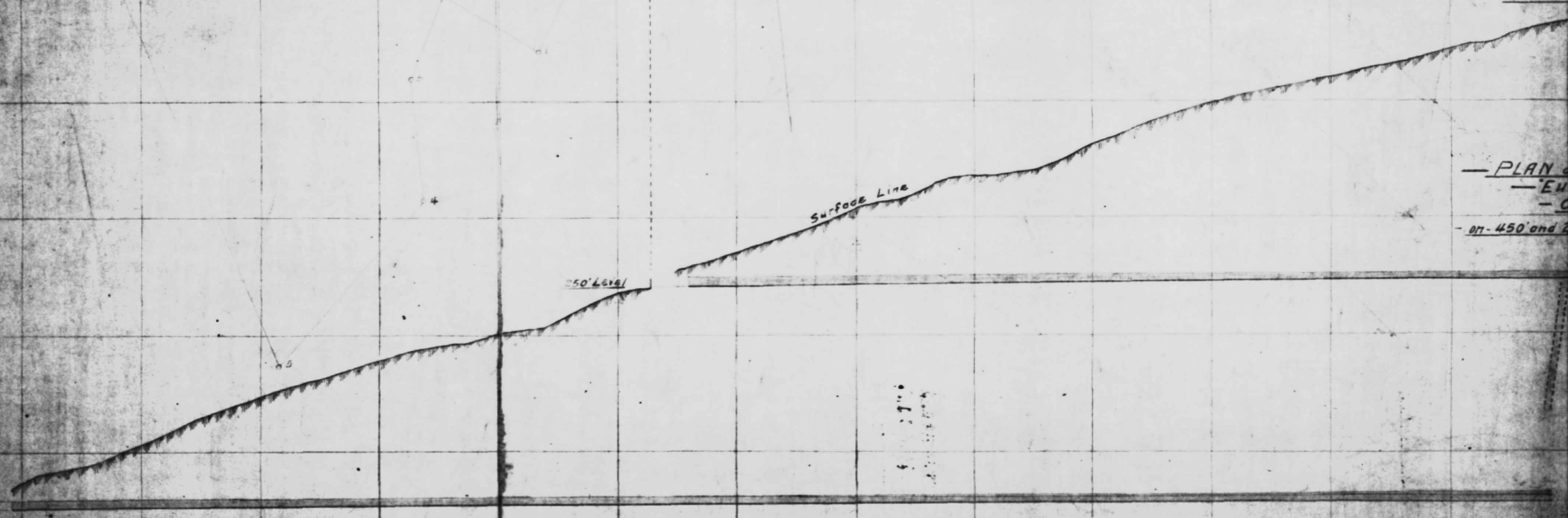
Gold Leaf M.C.
 - Lot - 12457 -

Bearings of 250' Level
 From 0+0 to 1+0
 1. 201 - N88°34'E
 2. 202 - S19°20'E
 3. 203 - N54°11'E
 4. 204 - S58°30'E
 5. 205 - 0.71000E
 6. 206 - 7.55840E



- PLAN -

- Scale - 50' to 1" -



- SECTION -

- PLAN and SECTION
 - Eureka Mine
 - Cross Cuts -
 - on - 450' and 250' Levels -

60552

60552