

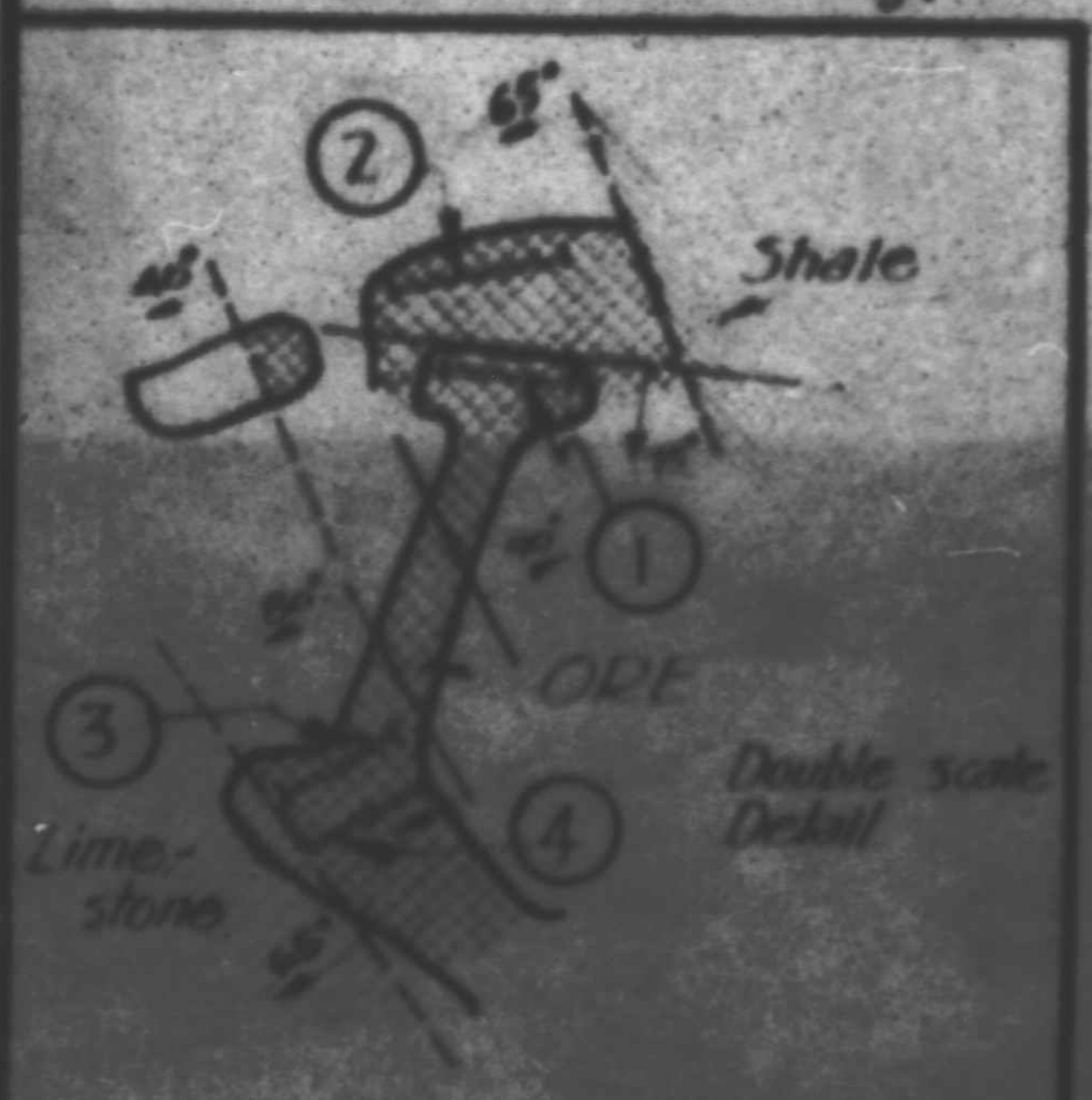
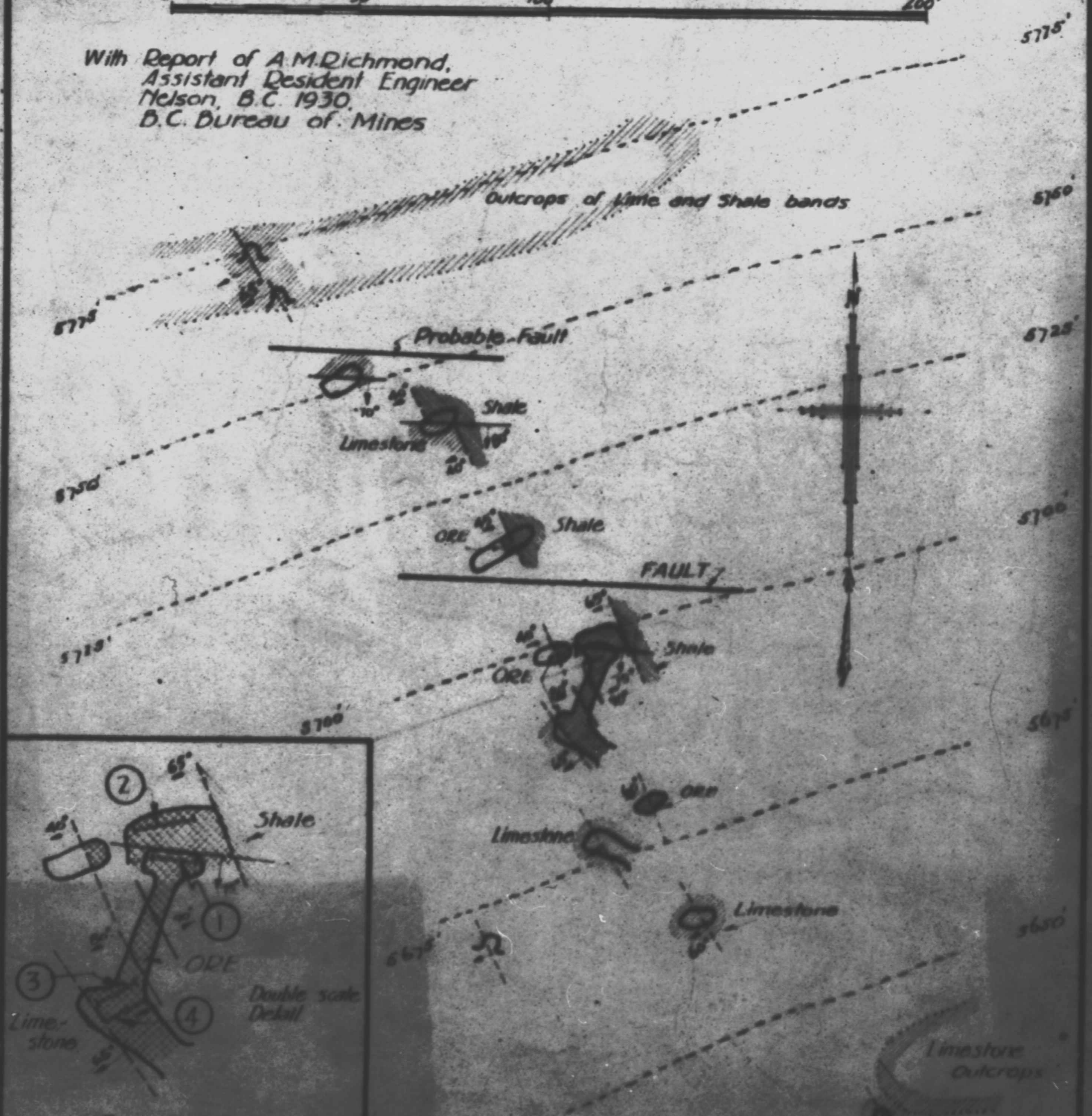
ALBION GROUP SURFACE SHOWINGS

HAWK CREEK, KOOTENAY NATIONAL PARK.

Windermere Mining Division.



With Report of A.M. Richmond,
Assistant Resident Engineer
Nelson, B.C. 1930.
B.C. Bureau of Mines



SAMPLES

No.	Width	Au	Ag	Pb	Zn
1	72"	0.05	16	432	30.67
2	96"	-	-	92	289
3	72"	-	-	0.5	36.0
4	72"	T.	21	0.45	46.4

LEGEND

- Limestone
- Shale
- Ore
- Slips
- Formation

Draw from map by C.C. Starr Oct 1930