

L.176 L.175

L.26

L.151

L.163

L.164

L.79

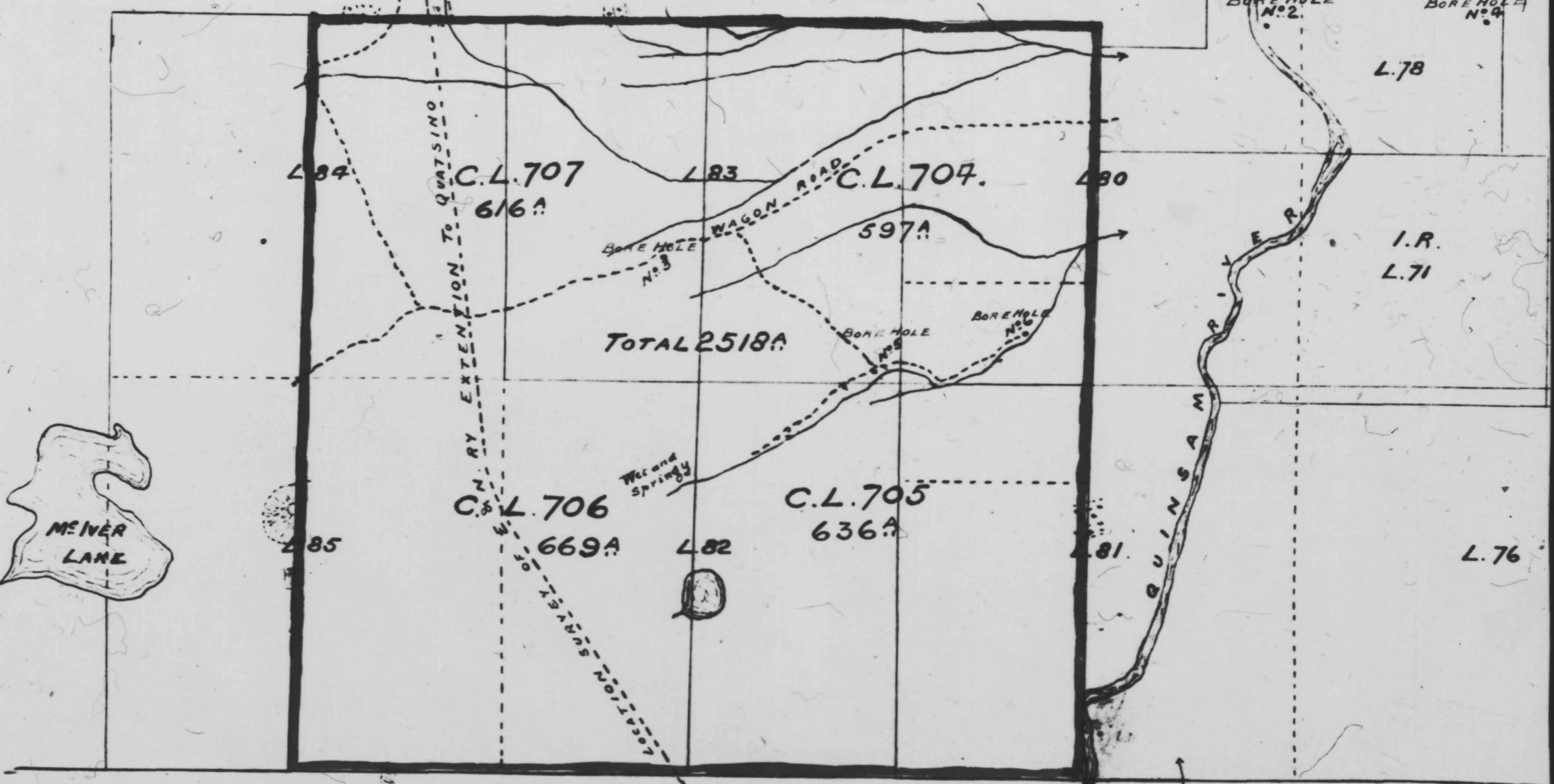
BORE HOLE No. 2

BORE HOLE No. 4

L.78

I.R. L.71

L.76



QUATSINO  
N. R. EXTENSION TO

C.L. 707  
616A

C.L. 704

BORE HOLE No. 3

597A

TOTAL 2518A

BORE HOLE No. 5

BORE HOLE No. 6

Wind and Springs

C.L. 706  
669A

C.L. 705  
636A

SECTION 50 OF T3182S N27E12E

50 TH

PARALLEL OF L

E. AND N. R.