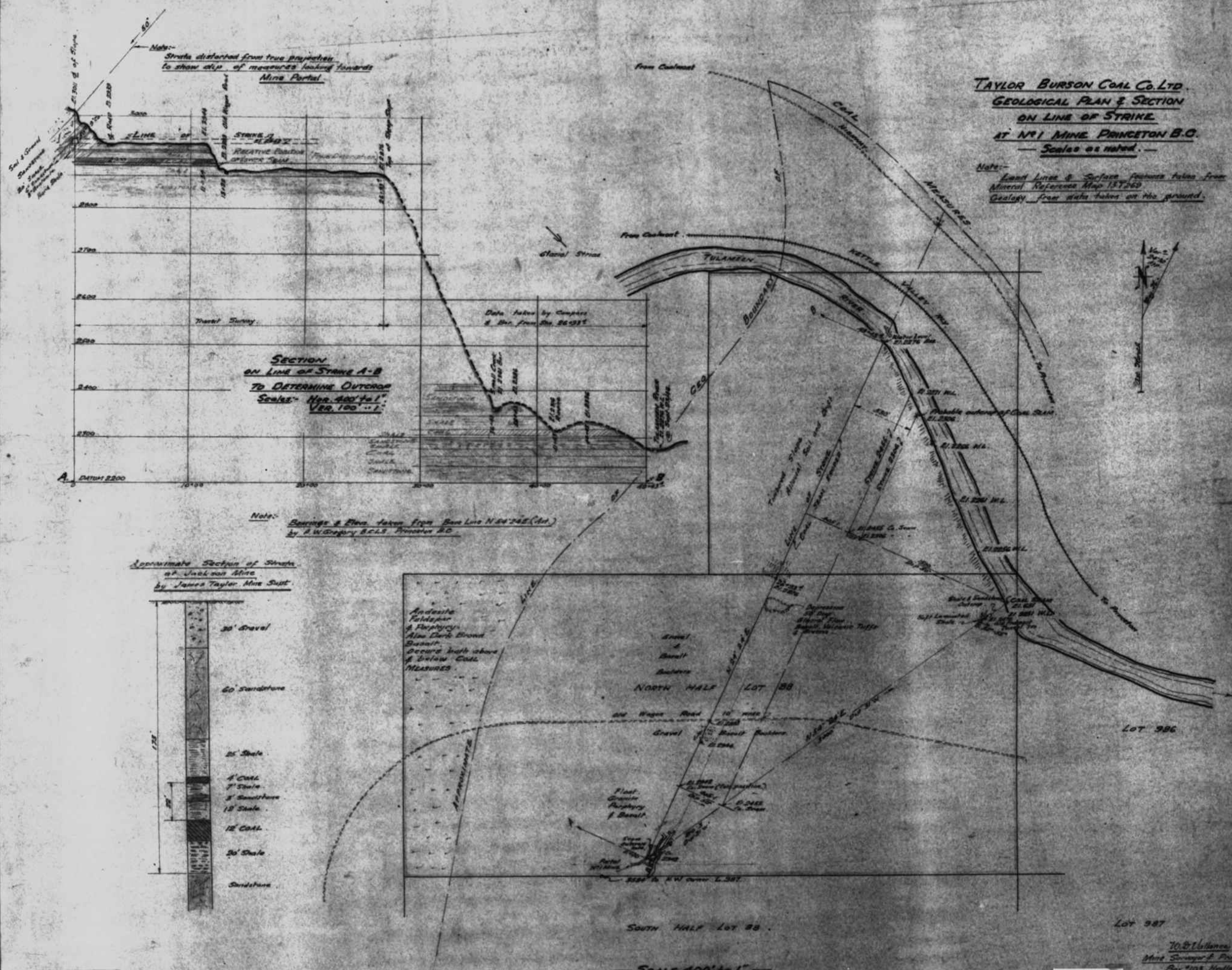


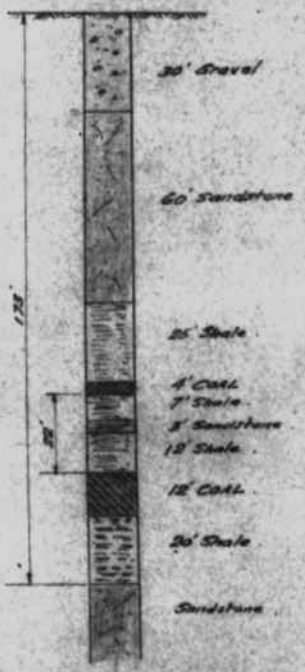
TAYLOR BURSON COAL CO. LTD.
GEOLOGICAL PLAN & SECTION
ON LINE OF STRIKE
AT NO. 1 MINE PRINCETON B.C.
 — Scales as noted. —

Note: —
 Land Lines & Surface Features taken from
 Mineral Reference Map 137263
 Geology from data taken on the ground.



SECTION
ON LINE OF STRIKE A-B
TO DETERMINE OUTCROP
 SCALE: HOR. 400' to 1"
 VER. 100' to 1"

Approximate Section of Strata
at Jackson Mine
 by James Taylor, Mine Supt.



Andesite
 Feldspar
 & Porphyry
 Also Dark Brown
 Basalt
 Occurs both above
 & below COAL
 MEASURES.

— SCALE 400' to 1' —

J. B. Callahan
 Mine Surveyor & Print. Eng.
 Box 7103, Victoria, B.C.
 Oct. 1, 1946.