

ASSAY NOTES

No.	Location of Sample	Au. Oz/T.	Ag. Oz/T.	Pb. %
1	Across B East side of shaft (Incline)	0.10	30.09	4.8
2	Across B in roof of crosscut	0.04	8.72	5.5
3	Mean of 4 cuts in incline shaft - 45'	0.09	15.80	4.0
4	Selected ore from E side incline shaft	0.16	32.82	6.1
5	Side gate incline shaft - 45'	0.04	10.08	2.5
6	Back from foot of No. 2 Tunnel	0.04	9.45	1.28
7	Croppings at No. 1 Shaft	0.26	257.46	12.25
8	Selected ore No. 1 Tunnel 125'	0.04	76.76	9.00
9	Selected ore Drift from incline shaft	0.20	92.32	12.0
10	No. 1 Shaft 3' down	0.36	317.36	13.0
11	Across vein 5' No. 1 Shaft 30' down	0.26	39.68	2.75
12	Side Gate	0.04	1.04	0.25
13	Average of dump No. 1 Shaft	0.26	48.72	2.5
14	Composite of drift incline shaft	0.08	6.40	1.7
15	Across 8' ore incline shaft	0.12	3.24	1.5
16	Floor No. 1 Tunnel 125' in 12"	0.04	27.60	1.75
17	Ore No. 3 Tunnel 9'	0.04	46.52	2.0
18	Across 30' Tunnel No. 1 at 85' in 45'	0.04	2.44	0.25
19	do do do 70'	0.04	6.16	1.25
20	From reef incline shaft inside slip	0.04	3.56	0.5
21	North side, shaft tunnel, by river	0.02	2.08	0.5
22	Old dump, incline shaft, by river	0.16	34.8	2.25
23	Open cut at 30-5-12' ore	0.10	2.64	1.75
24	From beyond fault to nose	0.06	4.26	1.0
25	do do do	0.20	22.22	4.0
26	Second grade ore beyond fault	0.08	8.88	2.0
27	3' vein, beyond fault	0.10	22.44	4.5
28	Ore 15' in from 27	0.16	48.80	11.0
29	do do do	0.06	8.26	2.0
30	Low grade	0.06	8.26	2.0

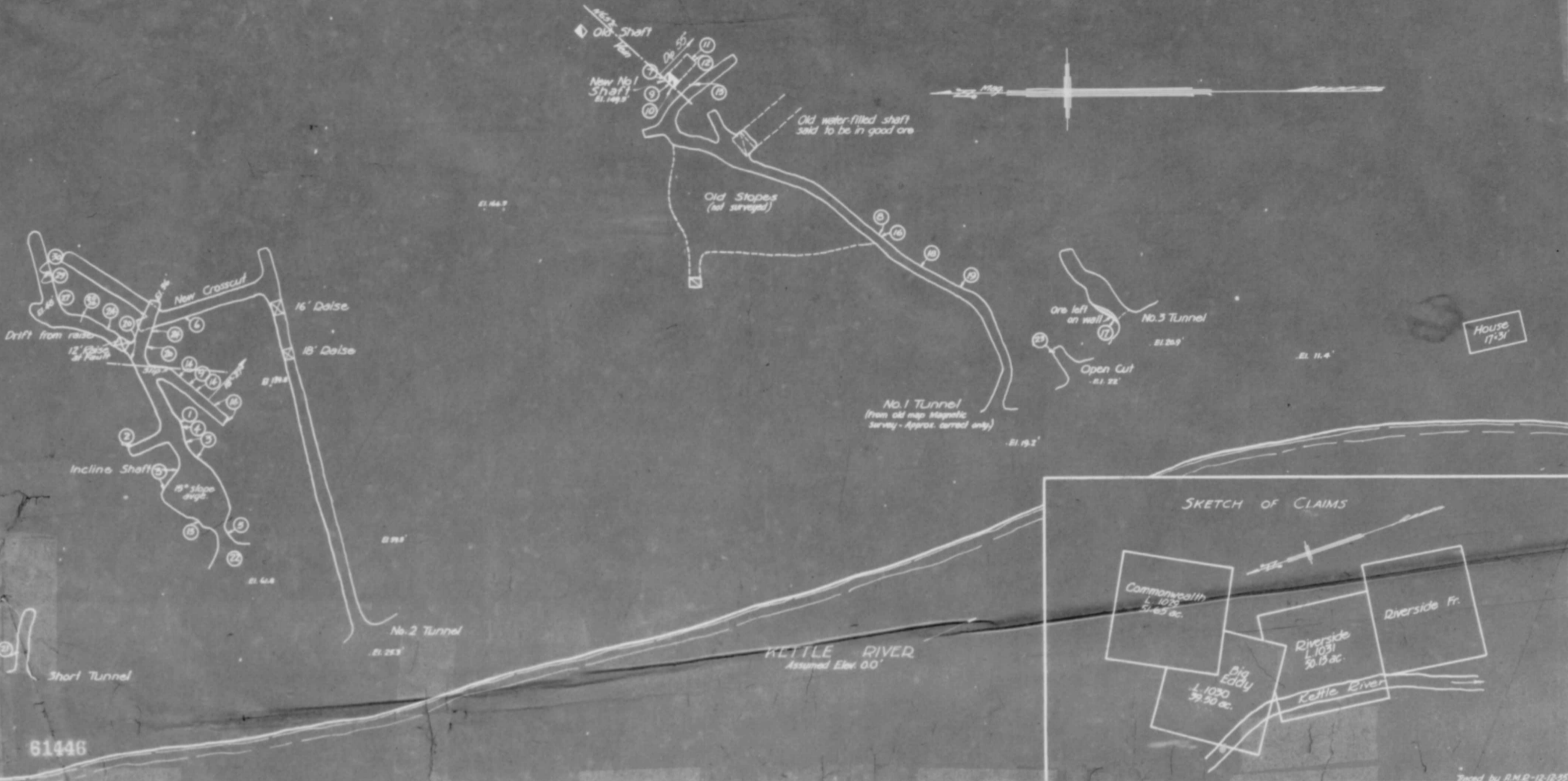
THE RIVERSIDE MINE WORKINGS.

Kettle River, Greenwood, M.D.

Scale 1"=40'

April, 1922

Map by FREDERIC KETTER, M.E.



61446

Drawn by A.M.E.-R.D.S.

G-4-21

ASSAYS

No.	PLATE	Location	Au. Oz/T.	Ag. Oz/T.	Pb. %
1	Across B East side of shaft	0.10	30.09	4.8	
2	Across B in roof of crosscut	0.04	8.72	5.5	
3	Mean of 4 cuts in incline shaft	0.09	15.80	4.0	
4	Selected ore from E side incline shaft	0.16	32.82	6.1	
5	Side gate incline shaft	0.04	10.08	2.5	
6	Back from foot of No. 2 Tunnel	0.04	9.45	1.28	
7	Croppings at No. 1 Shaft	0.26	257.46	12.25	
8	Selected Ore No. 1 Tunnel	0.04	76.76	9.00	
9	do Drift from incline shaft	0.20	92.32	12.00	
10	do No. 1 Shaft 3' down	0.36	317.36	13.00	
11	Across vein 5' No. 1 Shaft 30' down	0.26	39.68	2.75	
12	do do do	0.04	1.04	0.25	
13	Average of Dump No. 1 Shaft	0.26	48.72	2.50	
14	Composite of drift, incline shaft	0.08	6.40	1.70	
15	Across 8' ore do	0.12	3.24	1.50	
16	Floor No. 1 Tunnel 125' in 12"	0.04	27.60	1.75	
17	Ore No. 3 Tunnel No. 3 9'	0.04	46.52	2.00	
18	Across 30' Tunnel at 85'	0.04	2.44	0.25	
19	do do do 70'	0.04	6.16	1.25	
20	From reef, incline shaft, inside slip	0.04	3.56	0.50	
21	North side, shaft tunnel, at entrance	0.02	2.08	0.50	
22	Dump - incline shaft - by river	0.16	34.80	2.25	
23	Open cut, No. 3 vein	0.10	2.64	1.75	
24	From beyond slip near fault	0.06	4.26	1.00	
25	do do do	0.20	22.22	4.00	
26	do do do	0.08	8.88	2.00	
27	3' vein, drift from do	0.10	22.44	4.50	
28	do do do	0.16	48.80	11.00	
29	do do do	0.06	8.26	2.00	
30	Low grade do do	0.06	8.26	2.00	
31	No. 2 Tunnel 3' high grade	0.16	71.08	13.00	
32	do do do	0.04	7.04	1.10	
33	do do do	0.04	7.04	1.10	

THE RIVERSIDE MINE

ROCK CREEK

B.C.

AUG. 15, 1922.

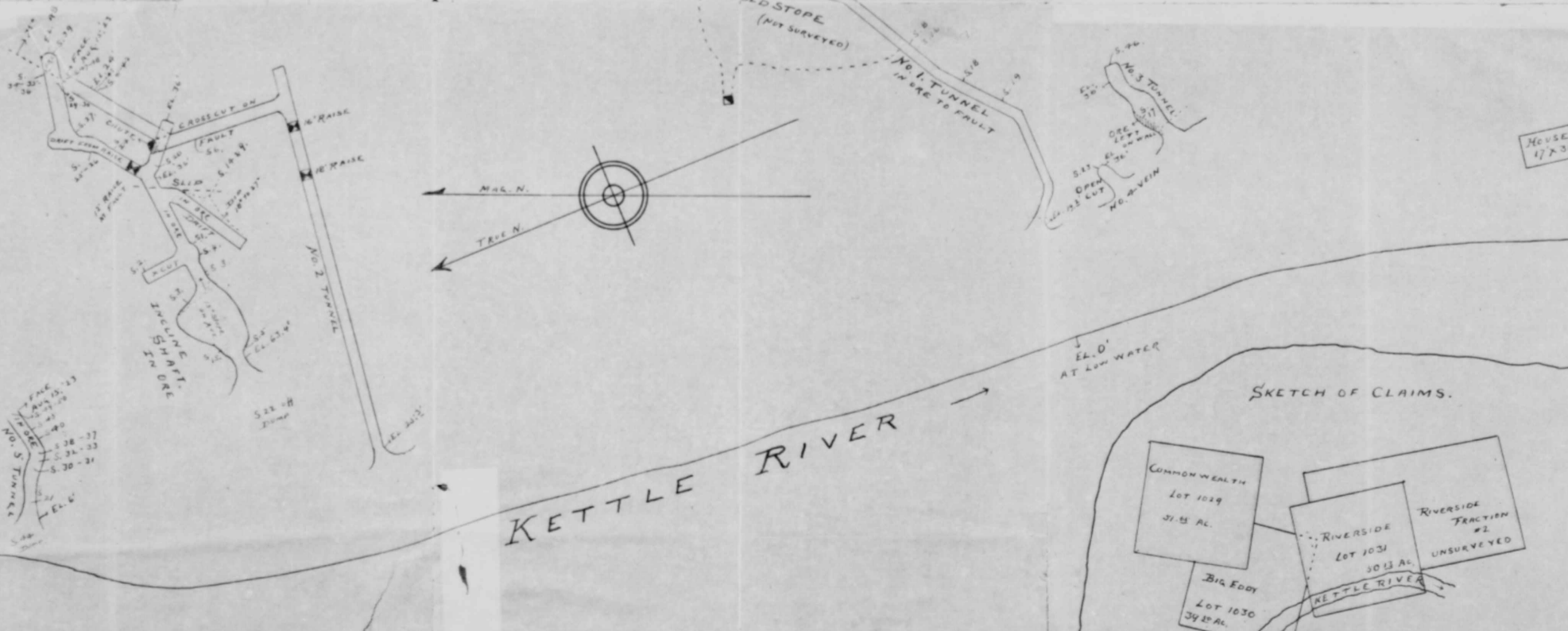
SCALE 1"=40 FT
5" SAMPLE

F. Ketter

ASSAYS

No.	PLATE	Location	Au. Oz/T.	Ag. Oz/T.	Pb. %
34	Beyond fault, near slip	0.04	11.92	6.35	20.47
35	do do do	0.04	12.12	6.5	9.75
36	Drilling from 2' vein	0.16	12.78	11.7	11.7
37	No. 2 Tunnel 125'	0.08	9.02	4.0	8.20
38	do do	0.16	78.88	14.30	71.03
39	End of drift across 7' vein	0.04	12.98	1.25	10.64
40	10' ore, No. 2 Tunnel	0.12	70.36	6.83	22.83
41	4' No. 2 - Iron only	0.04	1.04	-	1.07
42	2' do do	0.04	4.08	0.70	3.01
43	2' Just beyond fault	0.04	4.04	0.70	7.10
44	genl Sample, dump No. 1	0.10	32.40	3.60	28.72
45	1 1/2' Ore No. 3, 40' in	0.04	17.04	2.10	10.10
46	10' decomposed vein, No. 2, 70'	0.04	4.04	0.80	3.77
47	1 1/2' genl Sample, dump No. 2	0.10	28.74	3.30	28.13
48	do do 2' genl Average	0.14	18.76	2.00	18.61
49	do do 2' genl Average	0.10	44.08	3.90	36.16
50	do do do 2' genl Average	0.08	32.00	3.00	28.03

GOLD @ 20% SILVER @ 63% LEAD @ 6.6% QUOTATIONS OF AUG. 15, 1922



61446