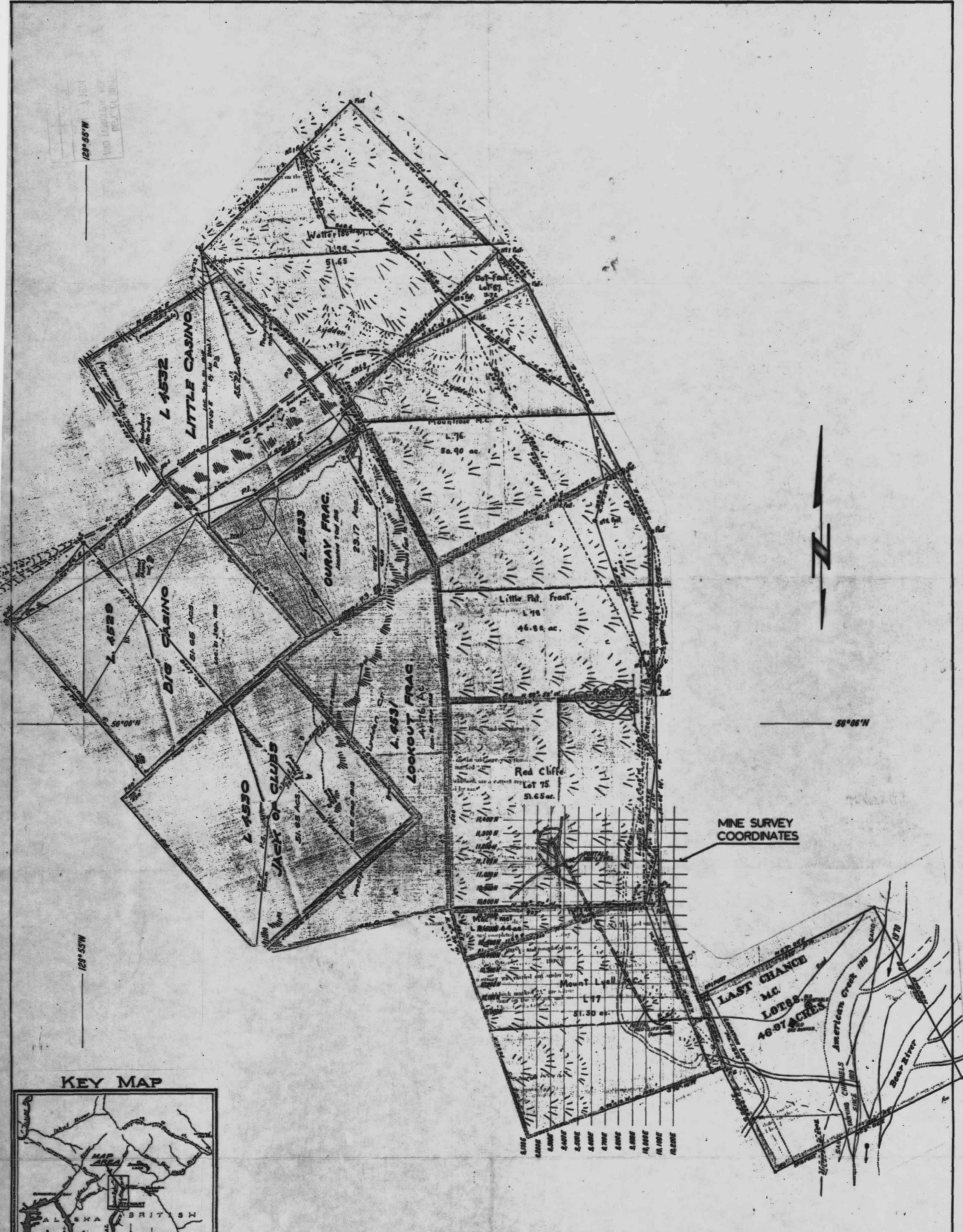


129° 55' W
AND LEASTWAY NOT
PERMITTED



MINE SURVEY
COORDINATES

KEY MAP



NOTE
COMPILED FROM
ORIGINAL GOVERNMENT
SURVEY MAPS

INSPECTOR OF MINES
RECEIVED
DEC 9 1973
PRINCE RUPERT, B.C.

RED CLIFF MINE STEWART, B.C.
LOCATION MAP CROWN GRANTS PORTAL
SCALE: 1" = 400'
DRAWN: J. W. CHECKED: SJK