

# Beau Pre Explorations Ltd.

# Valentine Mountain Project

Vancouver Island  
Valentine Mountain Area  
Valentine Mountain Project  
Highlights and Objectives  
Proposed Program  
Investment Opportunity

By Jacques Houle, P.Eng.  
Mineral Exploration Consulting



# Mining on Vancouver Island

## Strong Tradition - Great Potential

- 150 years of mining tradition on the Island beginning in 1852
- Highly varied & rich mineral deposit types reflect the Island's complex geology
- C\$24 billion in today's prices produced
- C\$26 billion in reserves and resources
- Many new deposits yet to be discovered



# Vancouver Island Deposits

## Selected Developed Prospects on Vancouver Island

Name	District	Owner	Deposit Type	MINFILE#	Year	Tonnes	Au g/t	Ag g/t	Mo %	Cu %	Pb %	Zn %
Valentine Mtn.	Leech River	Beau Pre Expl.	Au-quartz Vein	092B108	1990	30,660	14.70					
Lara	Mt. Sicker	Laramide Res.	Nor./Kur. VMS	092B129	1992	528,839	4.73	100.09		1.01	1.22	8.87
Macktush	Alberni Inlet	SYMC Res.	Por. Cu-Mo-Au	092F012	2002	220,000	13.33	51.85		0.77		
Dauntless	Alberni Inlet	SYMC Res.	Volc.Redbed Cu	092F168	2002	27,750	1.30	44.60		22.30		
Fandora	Clayoquot	Doublestar Res.	Cu-Ag Qtz.Vein	092F041	1964	181,434	12.74					
Bear	Kennedy Lake	SYMC Res.	Cu-Ag Qtz.Vein	092F044	1989	160,000	17.40					
Debbie	Alberni Inlet	M. Becherer	Au-quartz Vein	092F079	1990	471,956	6.23					
Domineer	Mt.Washington	Better Res.	Epith. Au-Ag-Cu	092F117	1989	550,298	6.75	32.23				
Catface	Clayoquot	Doublestar Res.	Por. Cu-Mo-Au	092F120	1990	188,000,000			0.01	0.42		
900 (Debbie)	Alberni Inlet	M. Becherer	Au-quartz Vein	092F331	1989	28,285	11.65					
Villalta	Nanaimo Lakes	R. Billingsley	Gossan Au-Ag	092F384	1991	22,677	4.11					
Privateer	Zeballos	Newmex Min.	Au-quartz Vein	092L008	1998	122,470	17.00					
Pilgrim	Merry Widow	H. Cohen	Pb-Zn Skarn	092L057	1978	96,162	0.03	32.64				8.86
Caledonia	Holberg Inlet	J. Shearer	Pb-Zn Skarn	092L061	1972	68,000	0.34	704.20			0.60	7.45
Uebell	Zeballos	Newmex Min.	Cu Skarn	092L155	1961	146,042				2.00		
Red Dog	Holberg Inlet	Moraga Res.	Por. Cu-Mo-Au	092L200	1992	25,000,000	0.44		0.01	0.35		
Smith Copper	Nimpkish	Doublestar Res.	Pb-Zn Skarn	092L208	1981	83,906		64.40		1.69	3.70	12.50
Hushamu	Holberg Inlet	Moraga Res.	Por. Cu-Mo-Au	092L240	1994	173,237,000	0.34		0.01	0.27		



# Valentine Mountain Project

- 261 Mineral Claim Units – 6500 hectares
- 2 MINFILE Au-quartz Vein occurrences:
  - Valentine Mtn. 092B108 Discovery Zone
    - Developed Prospect – 30,660 tonnes @ 14.7 g/t gold = 450,700 grams gold on C Vein (indicated resource in 1990 – may be inferred resource under NI43-101)
  - BPEX 092B075 Braiteach Zone
    - Showing - 5 kilometers west of Valentine Mountain
- Gold Mineralization Corridor – 7km X 0.5km



# Similar Gold Deposits

British Columbia Exploration Target Model:

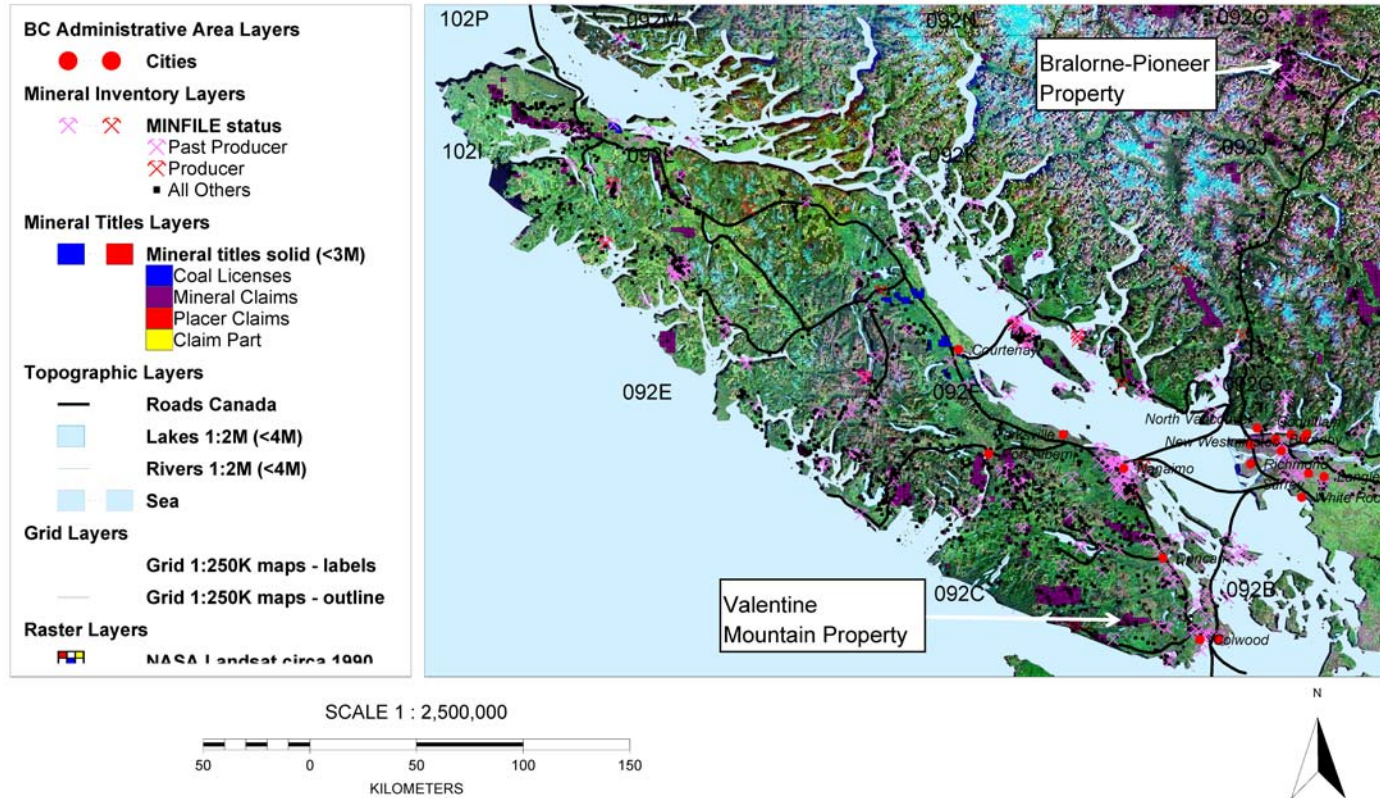
## Bralorne-Pioneer (Bridge R.)

- Past production (1899-1983):
  - 7.2 million tonnes
  - 18 grams per tonne
  - 130 million grams gold
  - C\$2.2 billion value at today's gold price



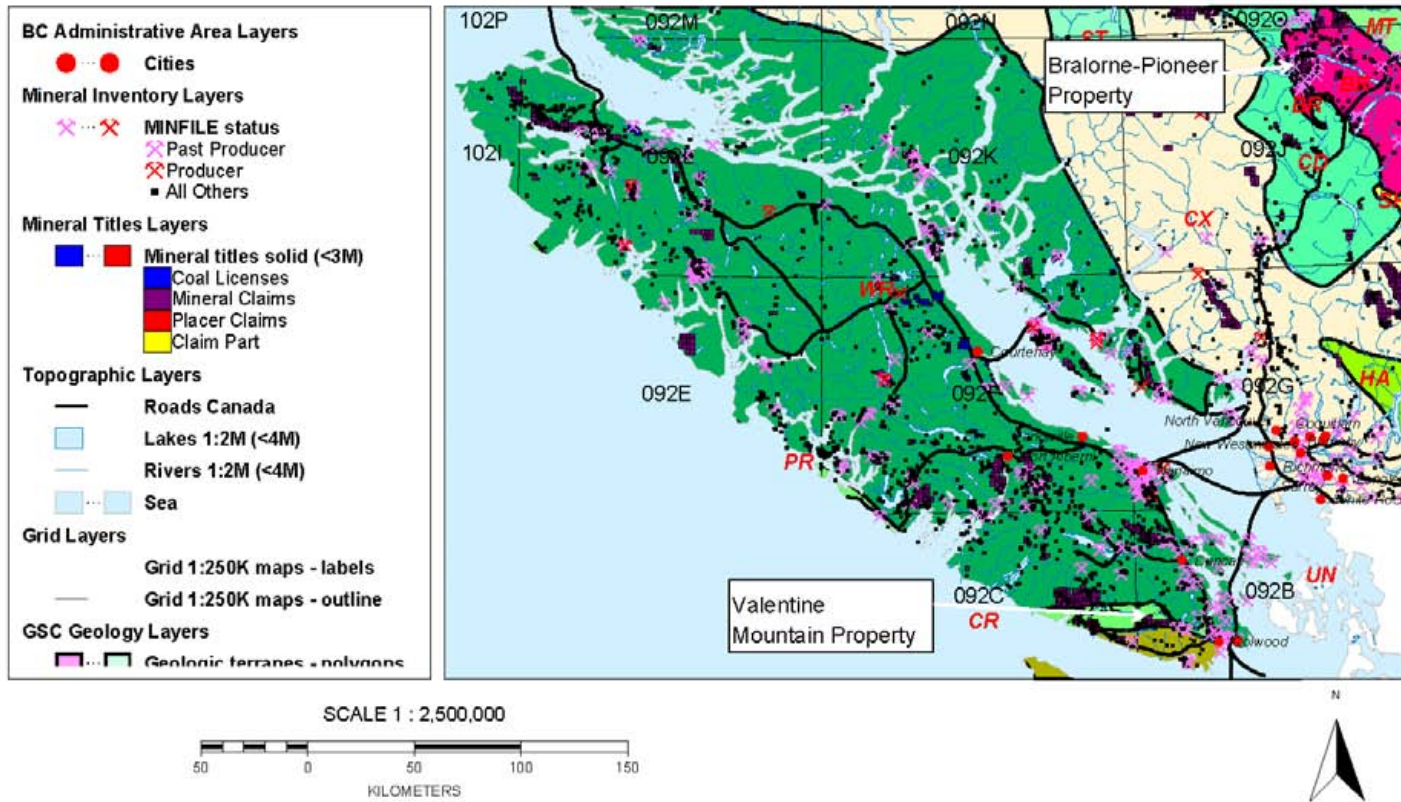
# Valentine Mountain Property Location Map 1:2,500,000

Figure 1a



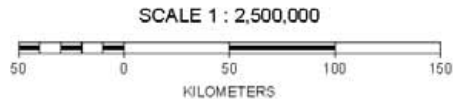
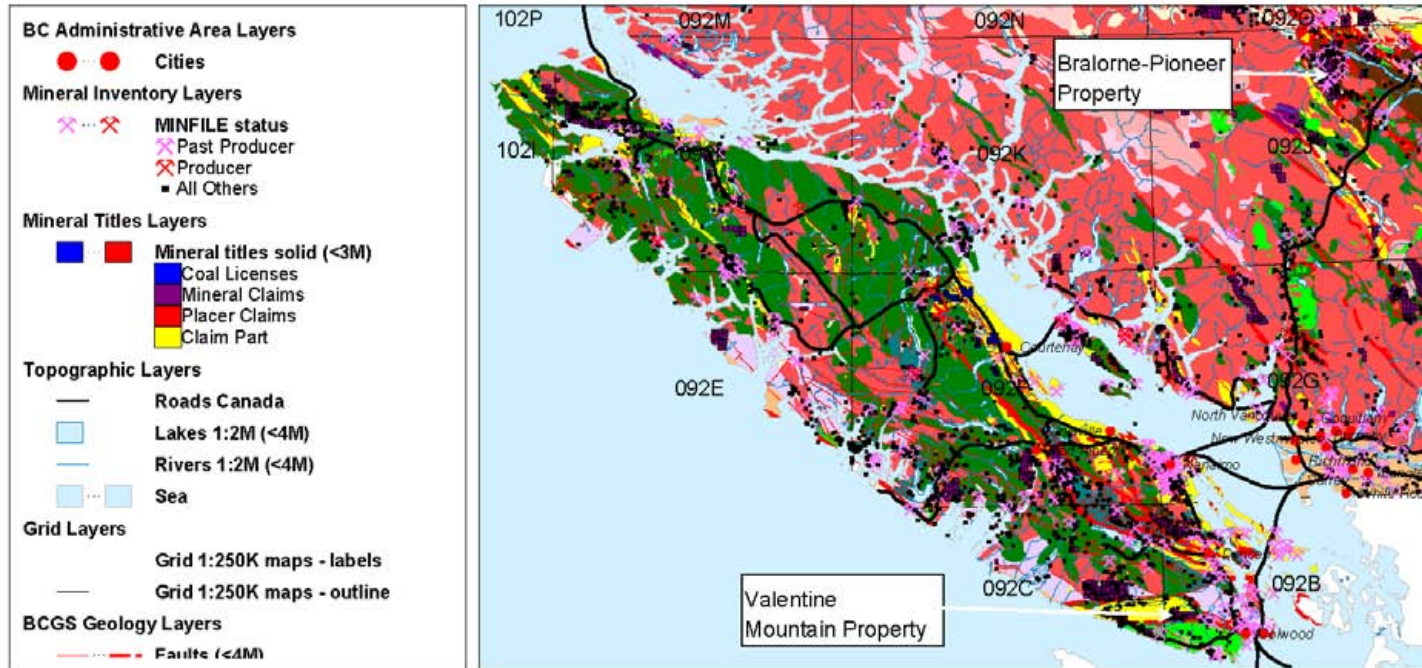
# Valentine Mountain Property Terrane Map 1:2,500,000

Figure 1b



# Valentine Mountain Property Geology Map 1:2,500,000

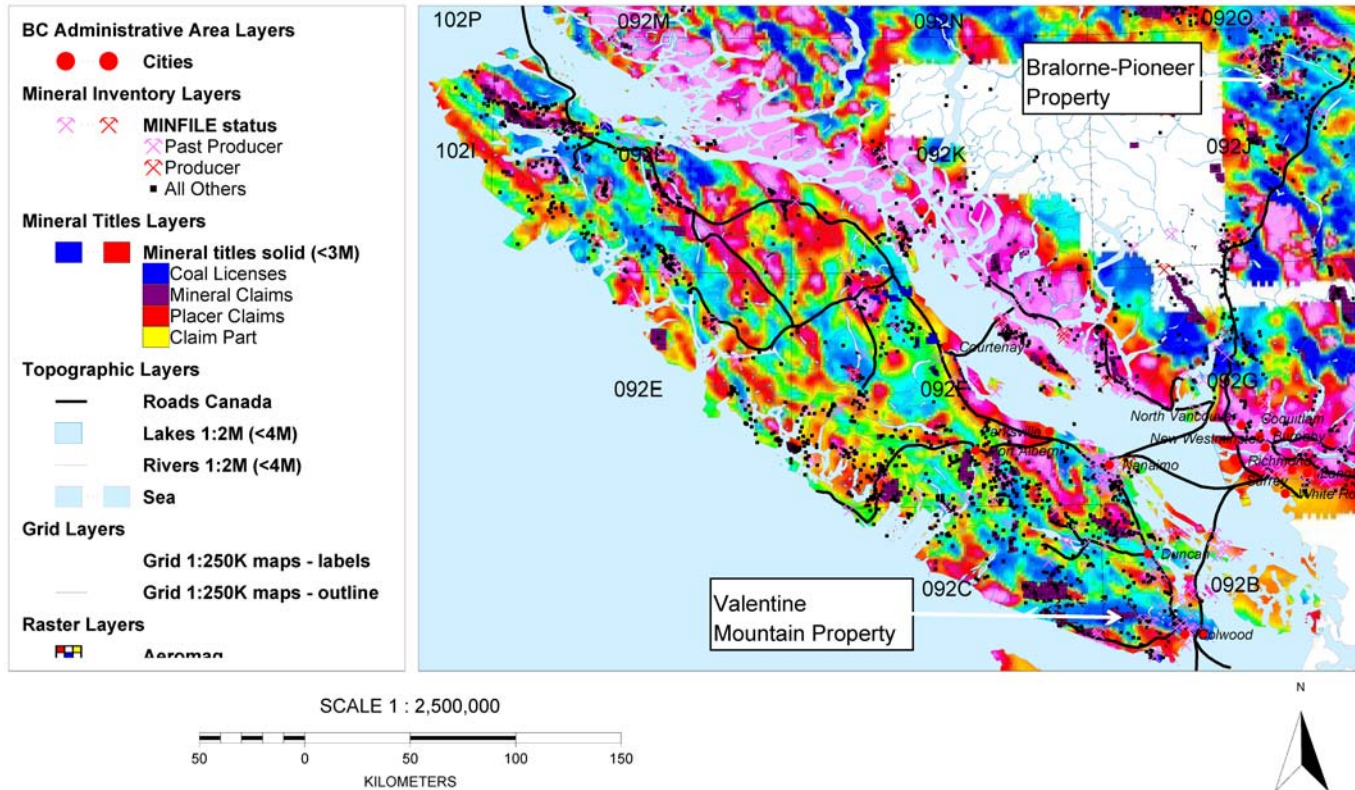
Figure 1c





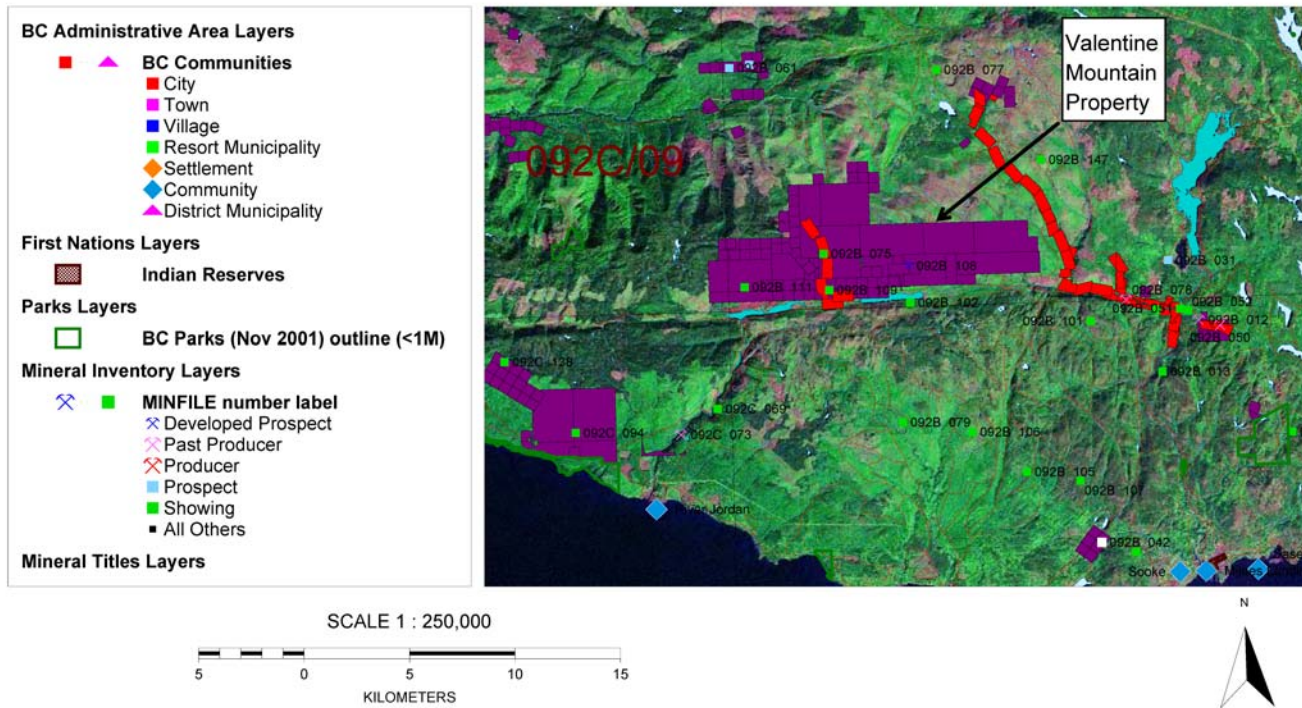
# Valentine Mountain Property Aeromagnetic Map 1:2,500,000

Figure 1d



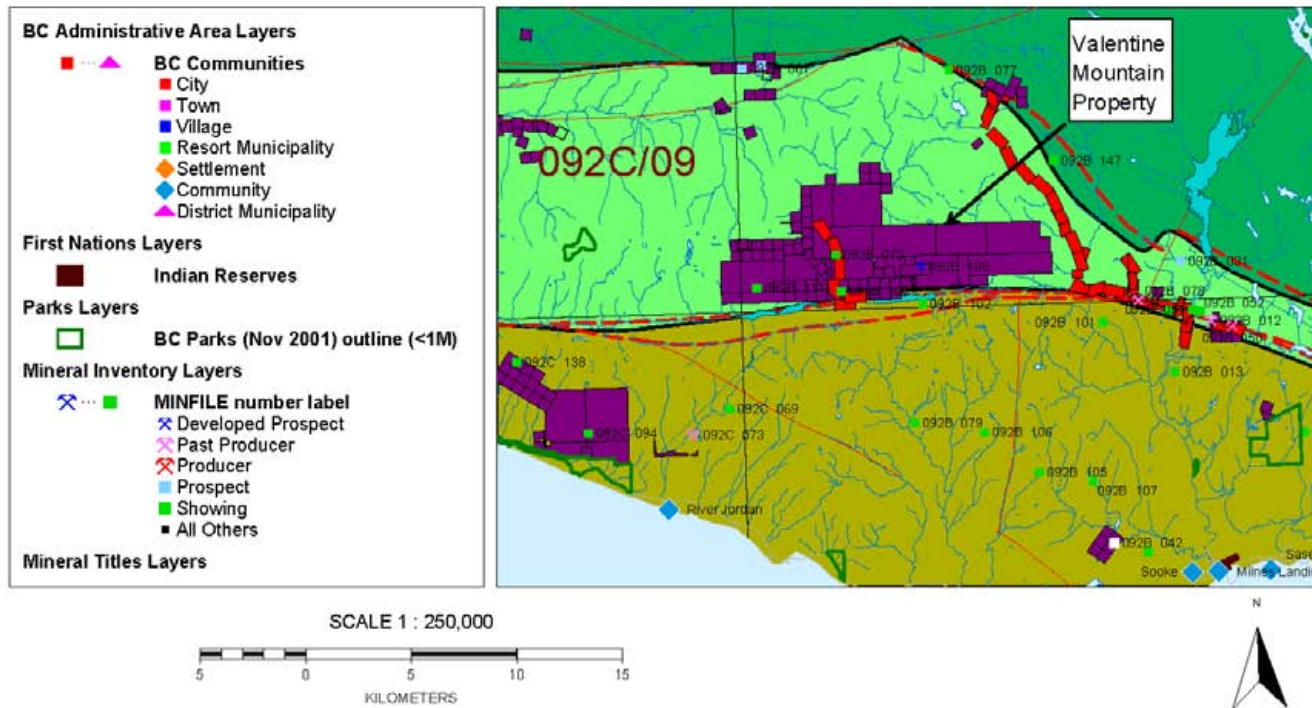
# Valentine Mountain Property Location Map 1:250,000

Figure 2a



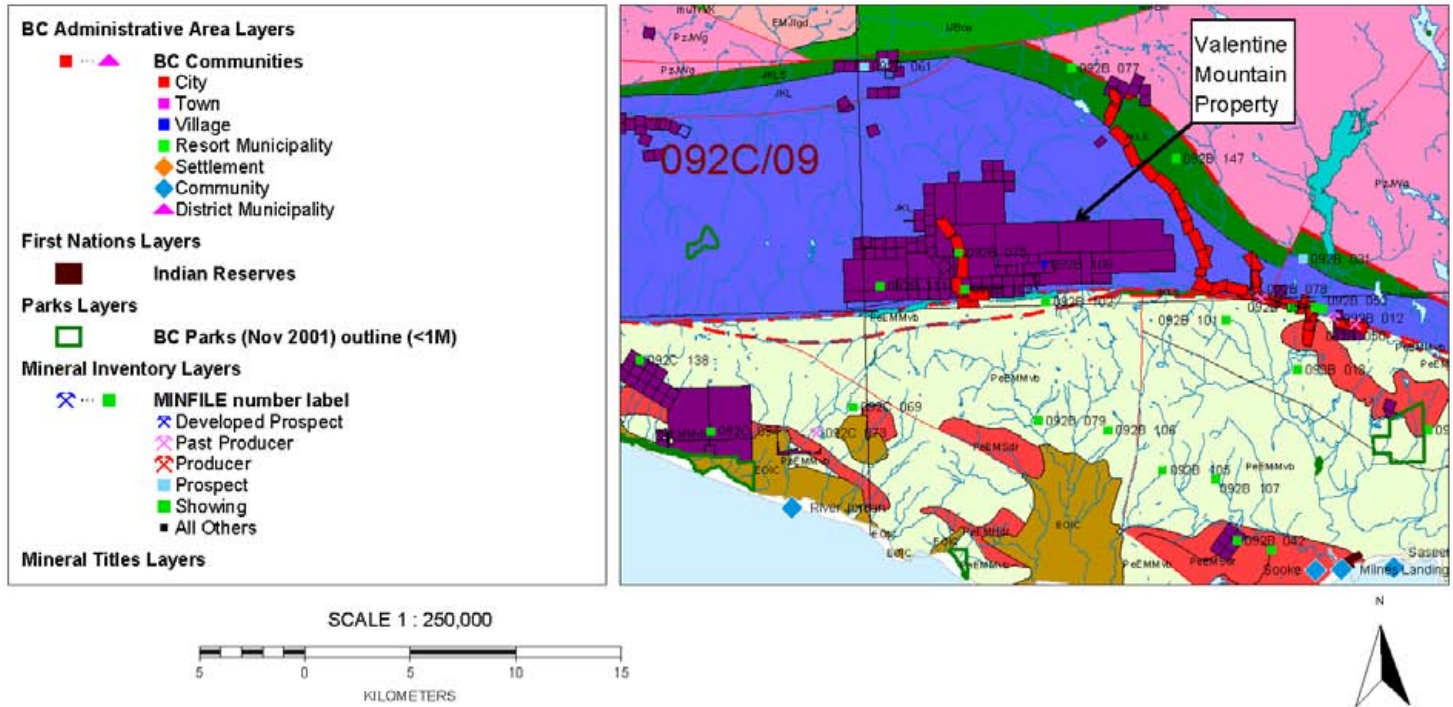
# Valentine Mountain Property Terrane Map 1:250,000

Figure 2b



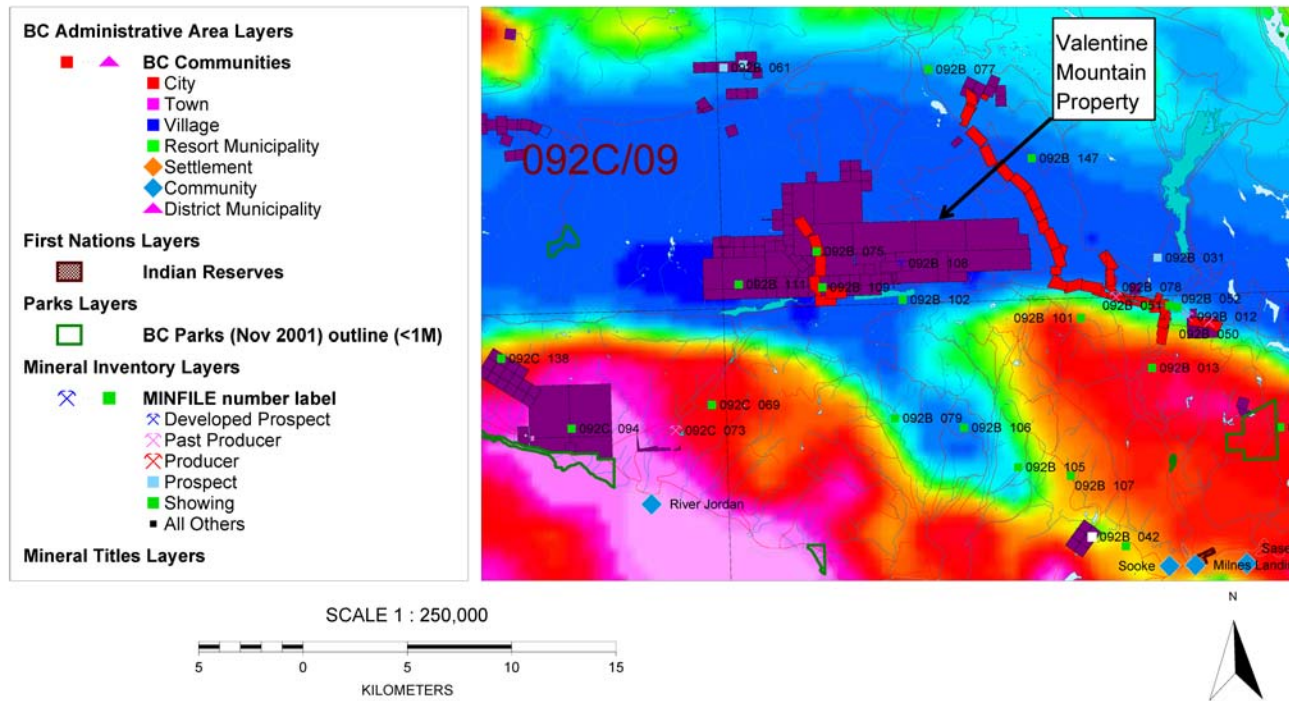
# Valentine Mountain Property Geology Map 1:250,000

Figure 2c

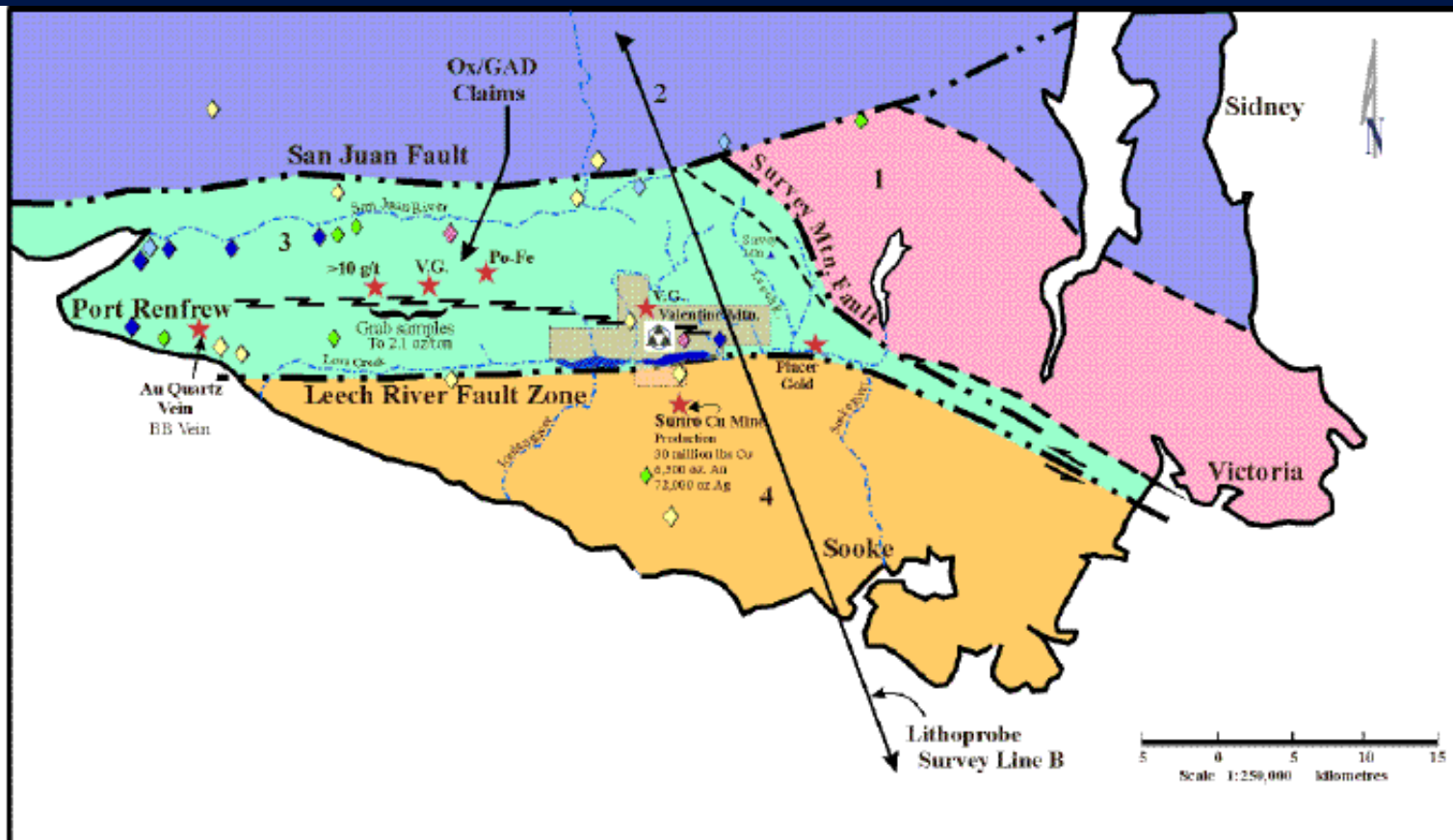


# Valentine Mountain Property Aeromagnetic Map 1:250,000

Figure 2d







**Beau Pre Explorations Ltd.**

108 - 3930 Shelbourne St. Victoria, B.C. V8P 5P

**Valentine Mountain Project**  
British Columbia  
Leech River Block ~ Geology & Metal Distribution

**Fig. 1**

April '98

bpxfaultzone4.cdr

Drafted by Media Types

© copyright 1998

**Legend:**

**Geology**

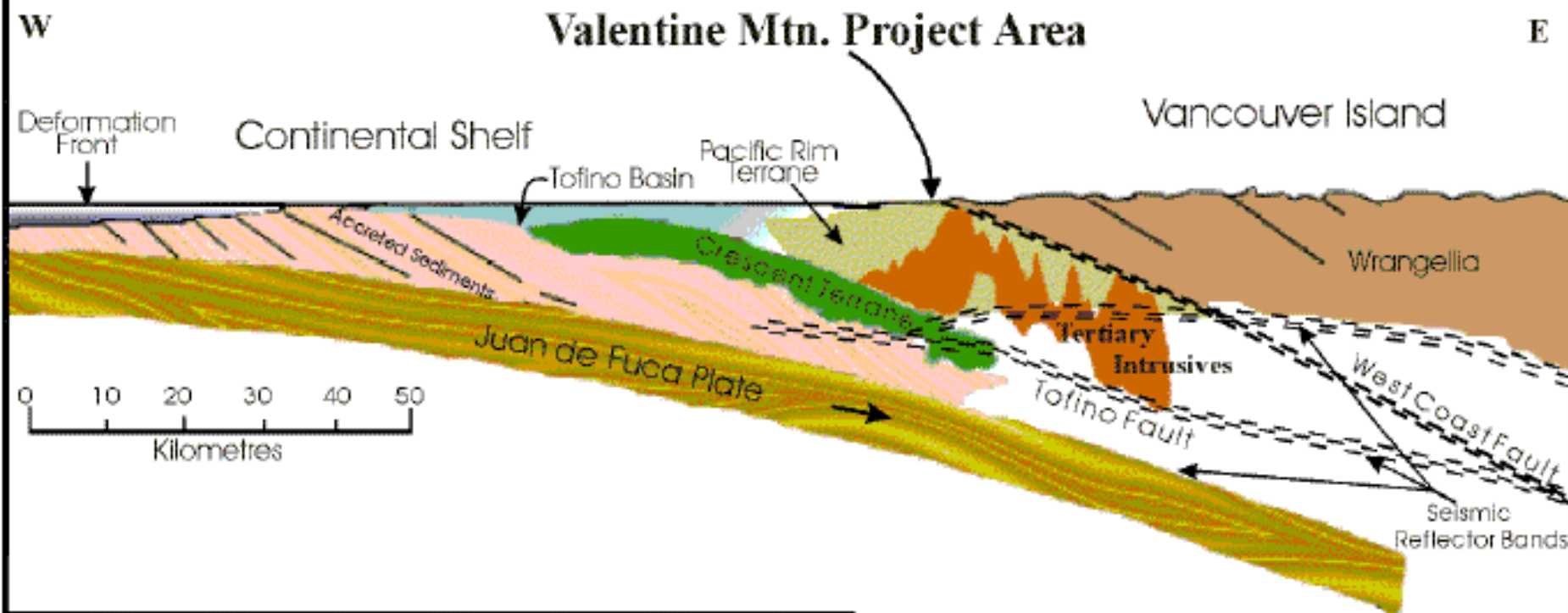
4. Methosin Ophiolitic Volcanics
3. Leech River Complex - Metamorphosed Volcano Sedimentary rocks intruded by Eocene diorites
2. Wrangellia Terrane
1. Paleozoic Rocks

**Government Stream Sediments**

- ◆ Gold
- ◆ Antimony
- ◆ Arsenic
- ◆ Fluorine
- ◆ Tungsten

- ★ Rock Samples
- V.G. Visible Gold
- Po Pyrrhotite
- Fe Iron





**Beau Pre Explorations Ltd.**

108 - 3930 Shelburne St. Victoria, B.C. V8P 5P6  
Valentine Mountain Project

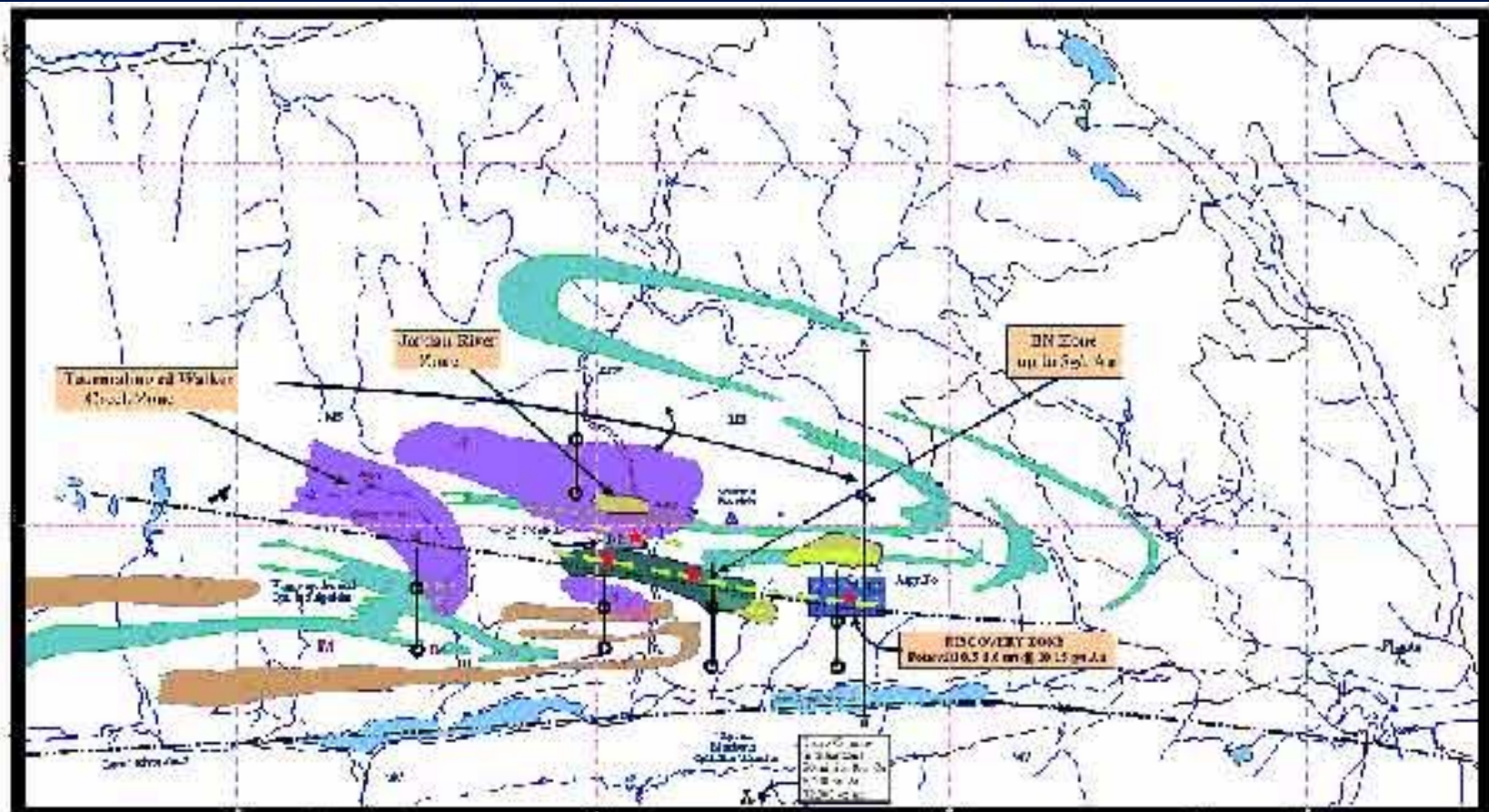


Adapted from Pacific Geosciences / UBC Lithoprobe Survey | Subduction2.cdr | Apr. 1998 | drafted by Media Types

**Fig. 2** Subduction Environment of South West Vancouver Island







440000 450000 460000 470000 480000

**LEGEND:**

- SW-60
- Fault - Strike
- Spring
- Traced Section Area
- Block Study
- Contour

**GEOLOGIC UNITS OR FORMS**

- Proterozoic rocks
- Triassic to Palaeogene
- Quaternary
- Other
- Unconformity
- Basal unconformity
- Post-Quaternary

**LEGEND**

- Wells
- Exploration Areas
- Wells
- Wells
- Wells

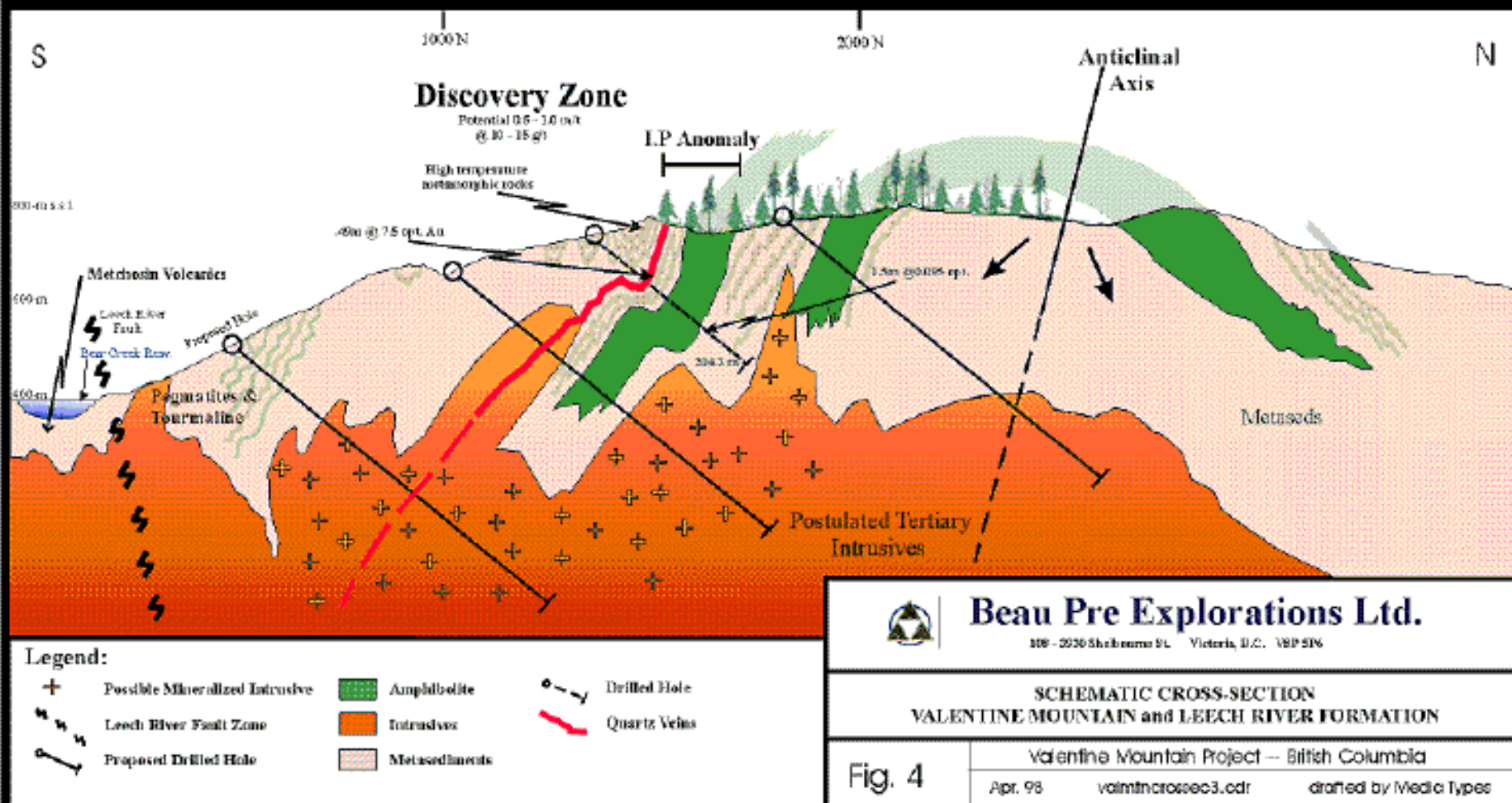


**Beau Pre Explorations Ltd.**  
1000-1000  
Vancouver, BC V6Z 1K1

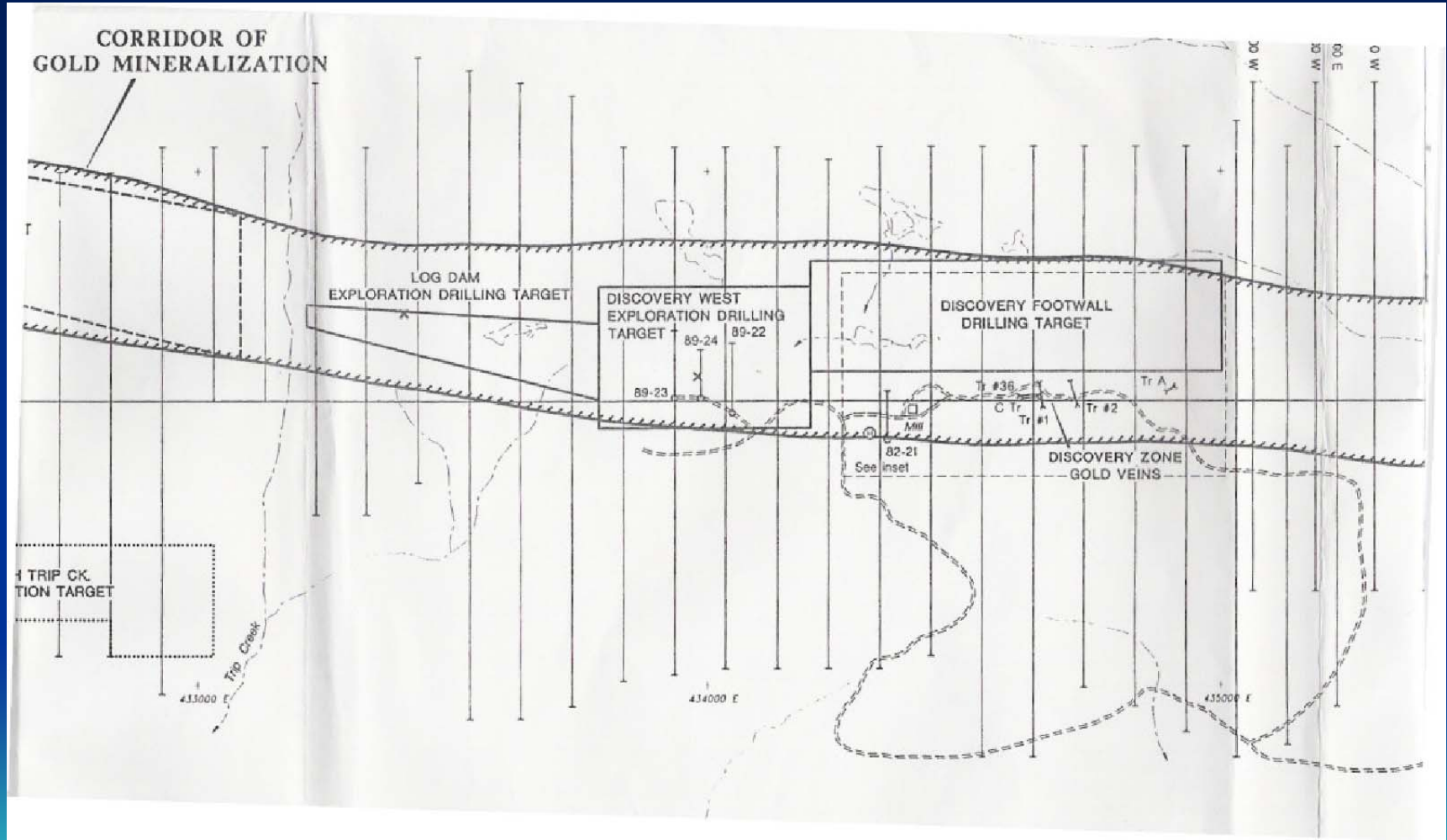
**Yarrow Mountain Project**  
British Columbia  
Completion Plan

Fig. 2 - April 95 | Updated: 11/11/05 | 040403, 040404

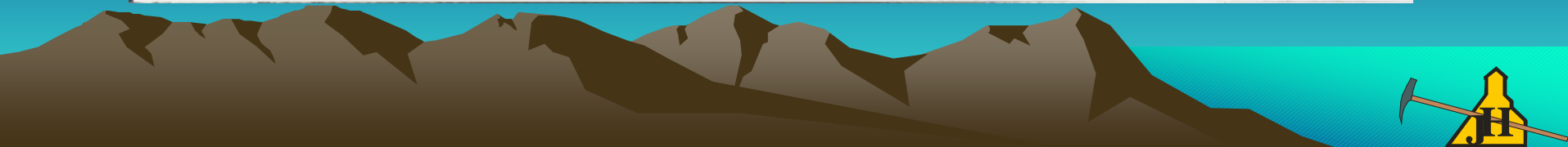
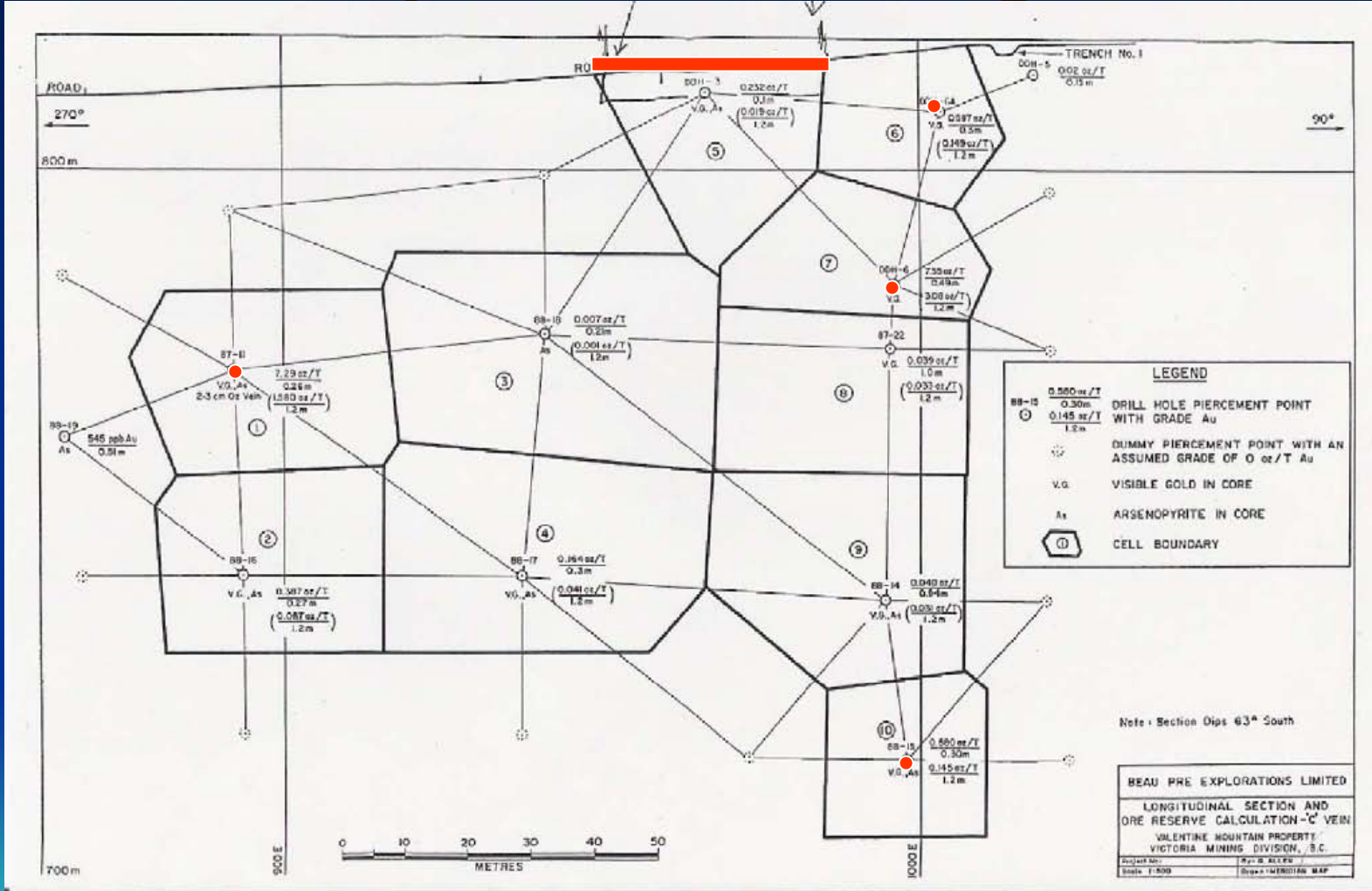




# Priority Exploration Targets



# Discovery C Vein Long Section



# Recent Accomplishments

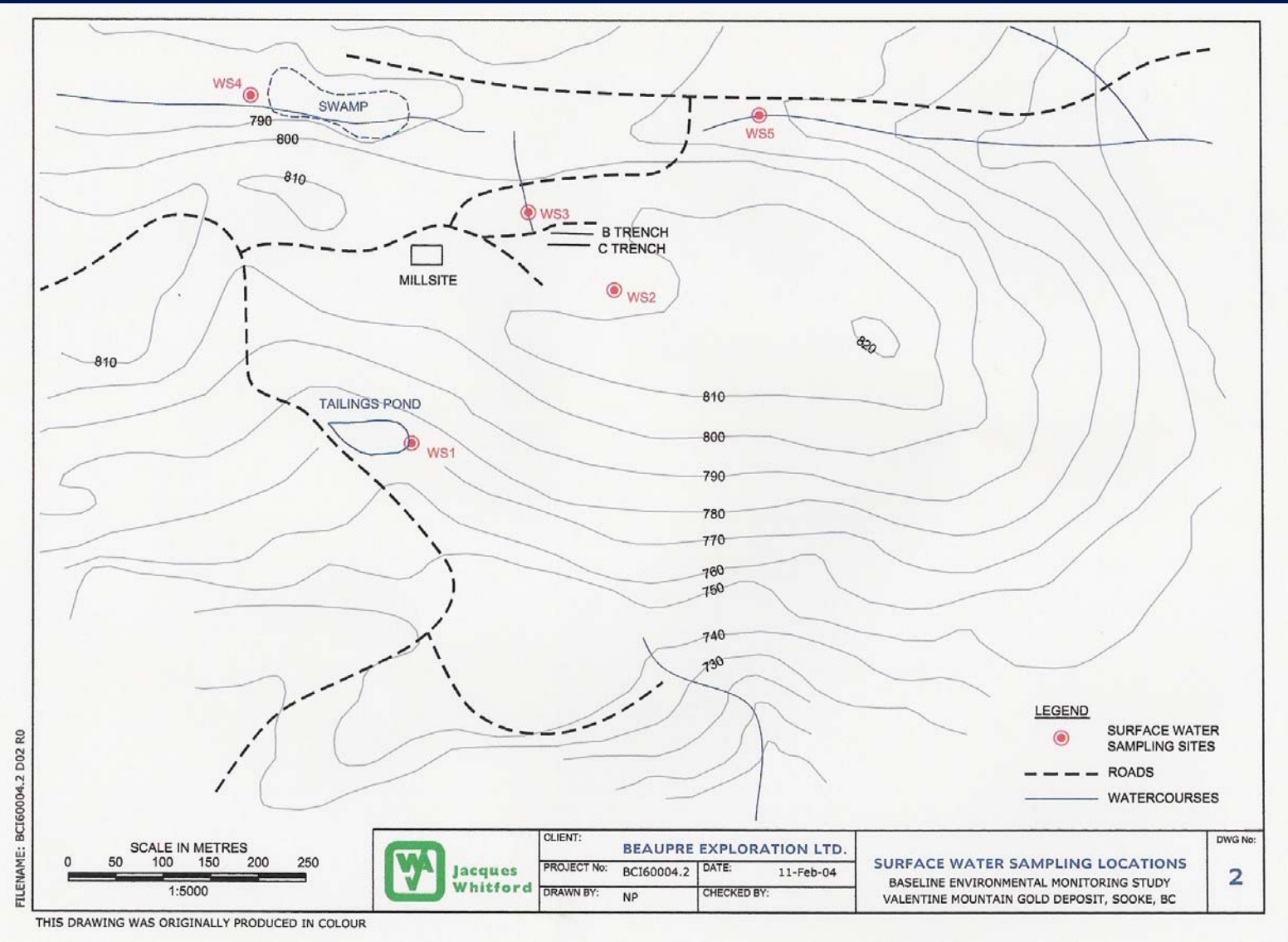
- Established Baseline Environmental Sampling Program by Jacques Whitford
- Commenced G.I.S. Compilation by Don MacIntyre (10-25% complete)
- Completed deep diamond drill hole at Discovery West Target
- Resumed activity at Valentine Mountain



# Environmental Program

- Naturally acidic surface waters with elevated Al at all sites, locally Zn and Co
- Dissolved metals in leachates from rock samples below BC discharge standards
- Mineralized rock likely ARD generating
- Footwall rock possibly acid neutralizing
- More sampling recommended, along with further evaluation of tailings pond





FILENAME: BCI60004.2 D02 RO

SCALE IN METRES  
0 50 100 150 200 250  
1:5000



CLIENT:	BEAUPRE EXPLORATION LTD.	
PROJECT No:	BCI60004.2	DATE: 11-Feb-04
DRAWN BY:	NP	CHECKED BY:

**SURFACE WATER SAMPLING LOCATIONS**  
BASELINE ENVIRONMENTAL MONITORING STUDY  
VALENTINE MOUNTAIN GOLD DEPOSIT, SOOKE, BC

DWG No:  
**2**

THIS DRAWING WAS ORIGINALLY PRODUCED IN COLOUR



# G.I.S. Compilation

## Completed:

- 73 diamond drill hole highlights in 3D
- Topography, survey data, trenches, geological contacts, soil anomalies

## Remaining:

- geophysical anomalies, outcrop mapping, trench mapping, surface sampling
- Interpretation and 3-D modeling





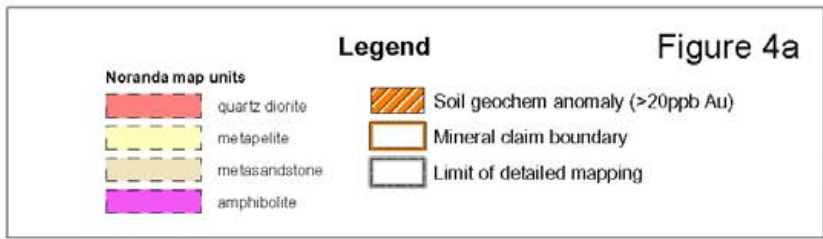
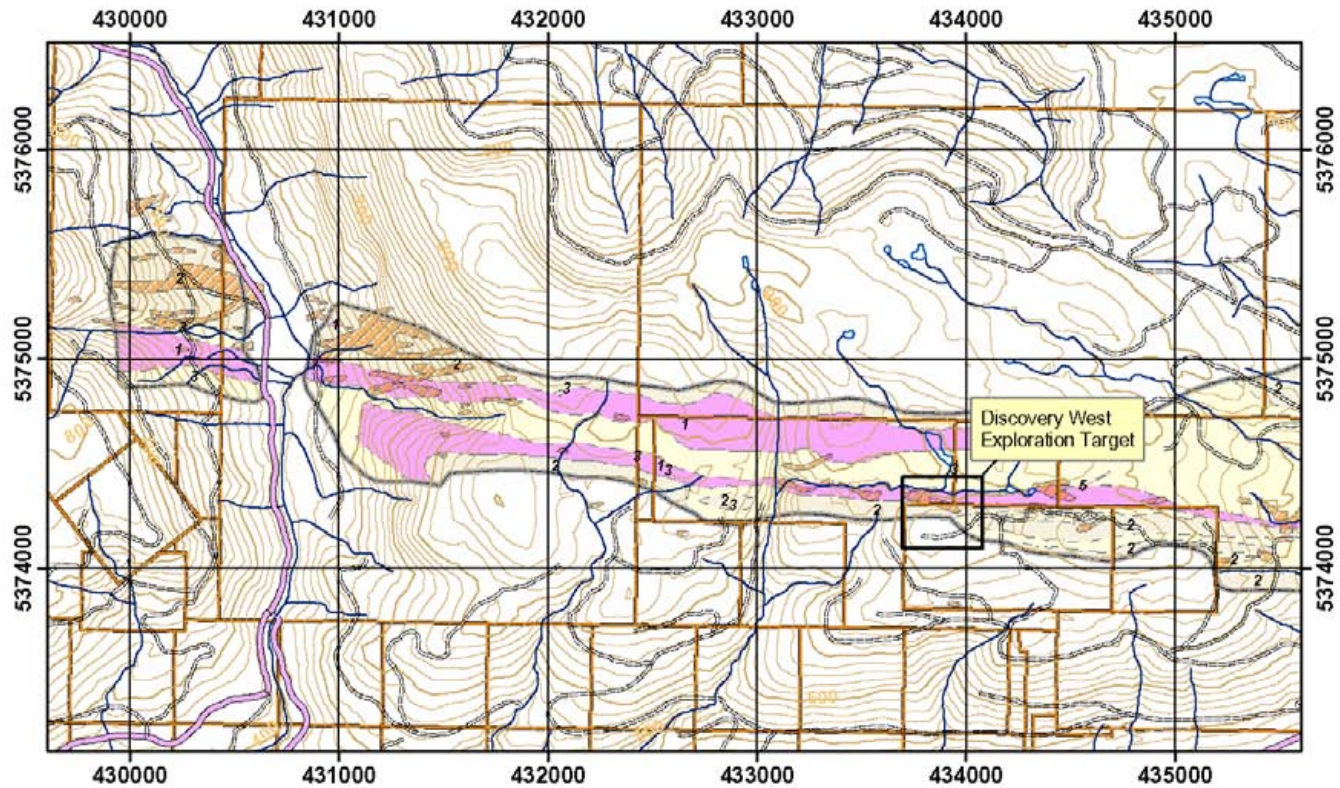


Figure 4a

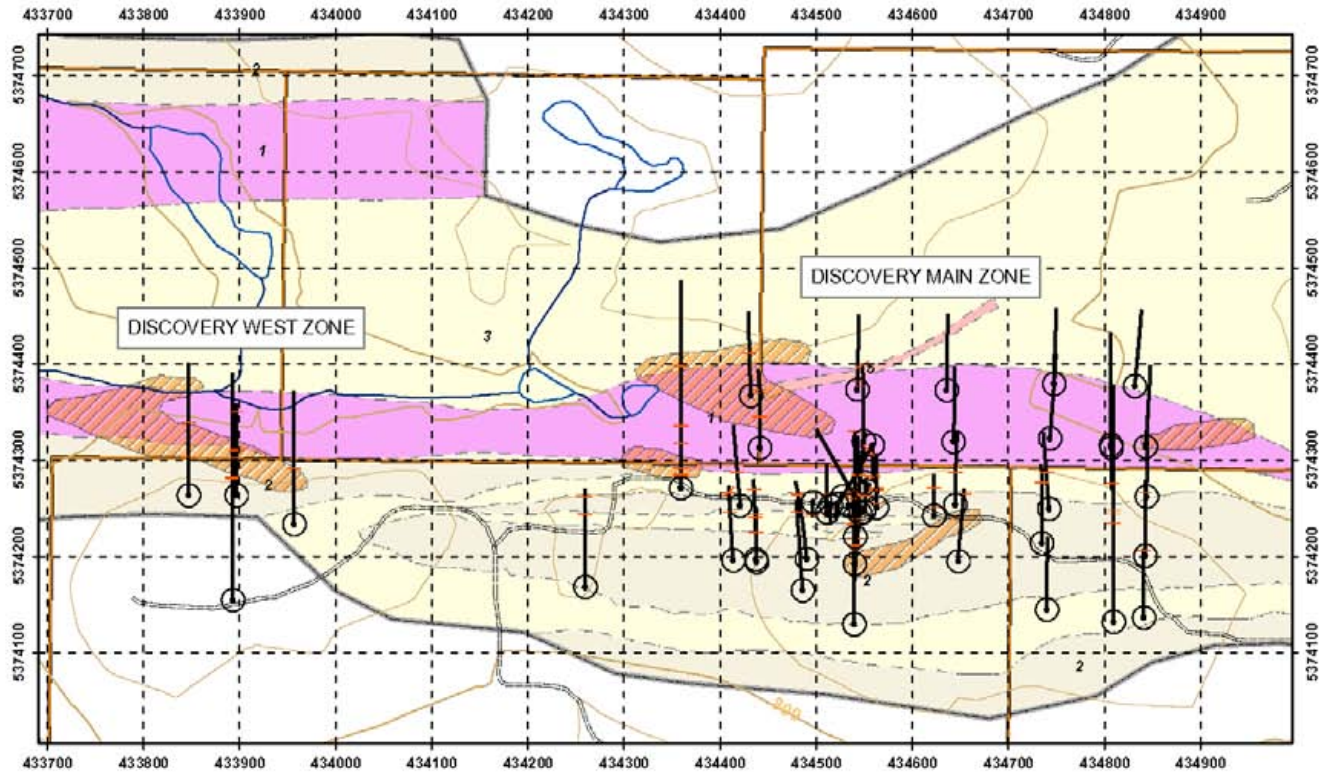
**Beau Pre Explorations Ltd.**  
**Valentine Mountain Project**

0 500 1,000  
Meters

Geology and Claim Map

Projection: UTM Zone 10N, NAD 83 NTS Map Sheet: 92B12  
Cartography by: D.G. MacIntyre Last Revision: Feb. 2004





Legend		Figure 4b	
<b>Noranda map units</b>			
quartz diorite	Soil geochem anomaly (>20ppb Au)	DDH collar	DDH surface trace
metapelite	Mineral claim boundary	Au intersection	
metasandstone	Limit of detailed mapping		
amphibolite			

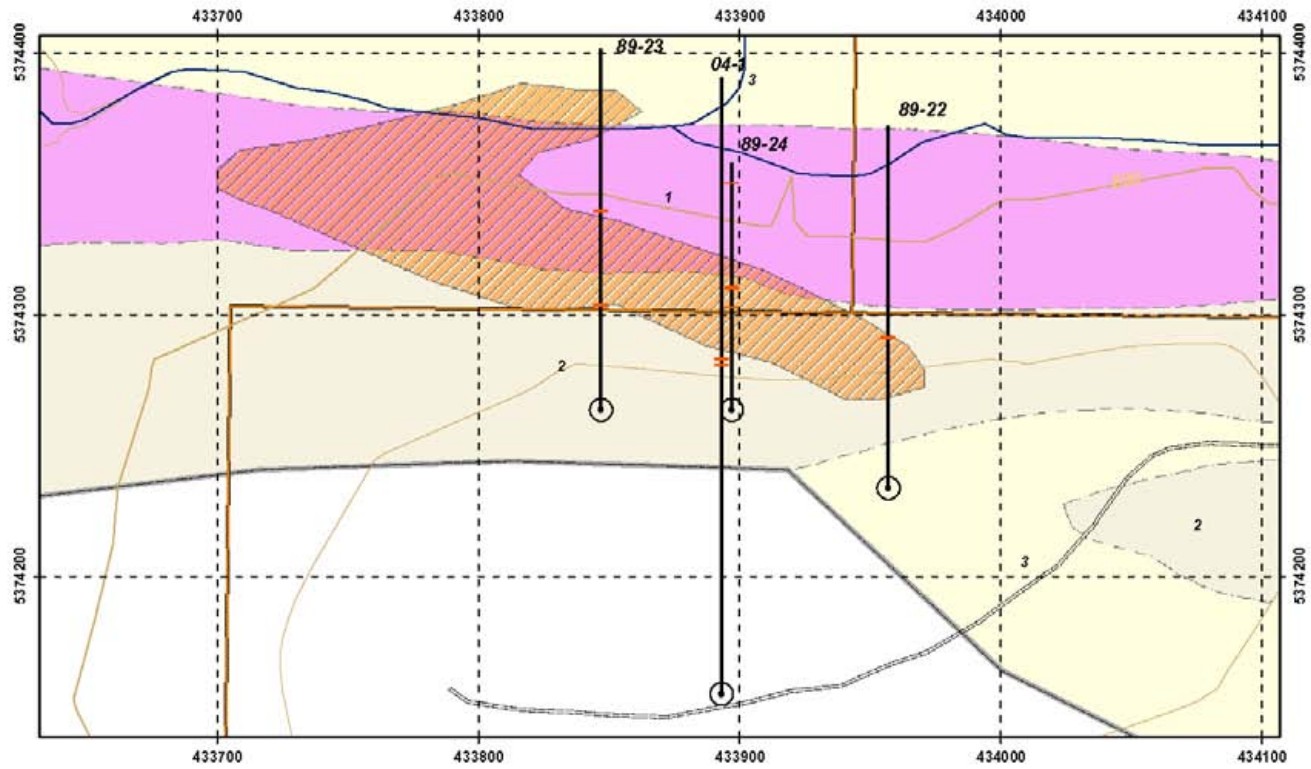
**Beau Pre Explorations Ltd.**  
**Valentine Mountain Project**

0 100 200  
Meters

Geology and Drill Hole Plan

Projection: UTM Zone 10N, NAD 83    NTS Map Sheet: 92B12  
Cartography by: D.G. MacIntyre    Last Revision: Feb. 2004





**Legend**

<b>Noranda map units</b>			
quartz diorite	Soil geochem anomaly (>20ppb Au)	DDH collar	
metapelite	Mineral claim boundary	DDH surface trace	
metasandstone	Limit of detailed mapping	Au intersection	
amphibolite			

**Figure 4c**

**Beau Pre Explorations Ltd.  
Valentine Mountain Project**

0      50      100  
Meters

Discovery West - Drill Hole Plan

Projection: UTM Zone 10N, NAD 83    NTS Map Sheet: 92B12  
Cartography by: D.G. MacIntyre    Last Revision: Feb. 2004



# Discovery West Drilling

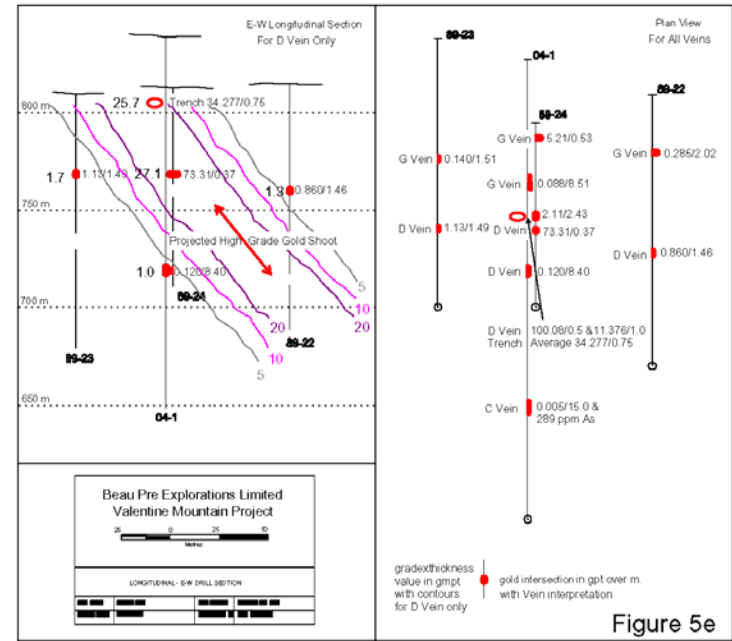
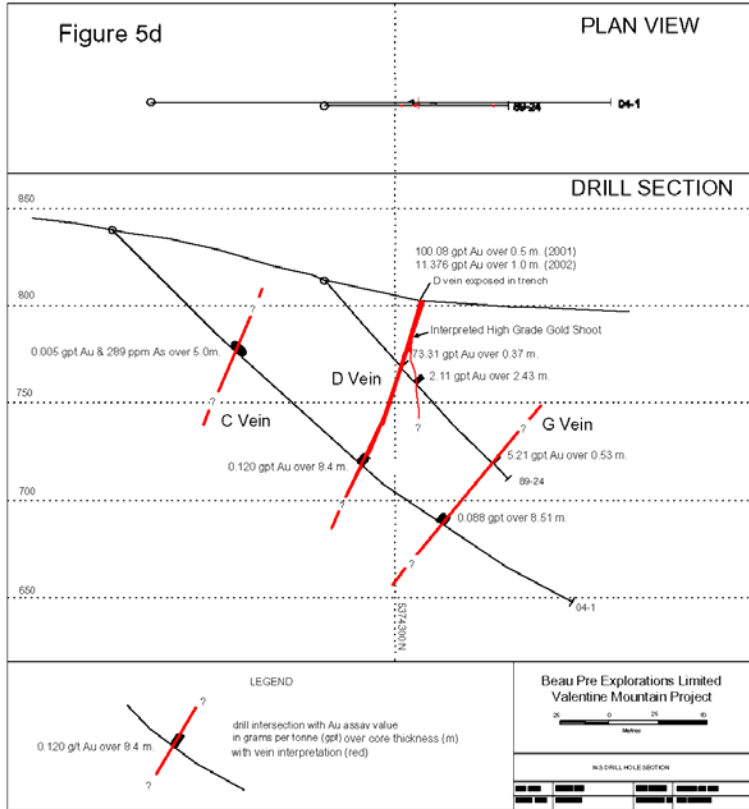
- Successfully completed V-04-01 to test below 89-24 which intersected:
  - D Vein which yielded 0.37 m. @ 73.3 g/t Au at 40 meters below surface, and
  - G Vein which yielded 0.53 m. @ 5.21 g/t Au at 65 meters below surface, and
- Surface trench on D Vein which yielded:
  - 0.5 m. @ 100.08 g/t Au in 2001, and
  - 1.0 m. @ 11.376 g/t Au in 2002



# Drilling Highlights

- C Vein - 289 ppm As and 5.1 ppb Au over 15.0 meters at 70 m. below surface
- D Vein - 120 ppb Au over 8.4 m. at -100m.
- G Vein - 88 ppb Au over 8.51 m. at -120m.
- Deep I.P. target - 53.4 ppm As and <5 ppb Au over 9.15 m. in quartz-pyrite at -130m.
- Suggests probable inclined plunge, which may warrant additional drilling





# Exploration Objectives

- Continue baseline environmental monitoring
- Complete industry-standard GIS database
- Create predictive 3-D geological model
- Establish Indicated Resources at Discovery Zone to optimize grade control during U/G or surface bulk sampling & test milling on site
- Establish Inferred Resources at Discovery West, Log Dam, or other Targets



# Proposed Program

• G.I.S. Modeling	\$ 75,000
• Property Exploration	475,000
• Environmental Monitoring	10,000
• U/G Bulk Sampling	1,849,500
• Processing Plant	537,500
• Scoping Study	50,000
<b>Total</b>	<b>\$2,997,000</b>





# Investment Opportunity

1. Established junior company holds large property with excellent infrastructure
2. Long local history and strong project continuity – Bob Beaupre – 27 years
3. Leading area exploration play in a high-potential, under-explored area
4. High quality gold exploration targets during period of commodity price growth

