

Beau Pre Explorations Ltd.

Valentine Mountain Project

Vancouver Island
Valentine Mountain Area
Valentine Mountain Project
Highlights and Objectives
Proposed Program
Investment Opportunity

By Jacques Houle, P.Eng.
Mineral Exploration Consulting



Mining on Vancouver Island

Strong Tradition - Great Potential

- 150 years of mining tradition on the Island beginning in 1852
- Highly varied & rich mineral deposit types reflect the Island's complex geology
- C\$24 billion in today's prices produced
- C\$26 billion in reserves and resources
- Many new deposits yet to be discovered



Vancouver Island Deposits

Selected Developed Prospects on Vancouver Island

Name	District	Owner	Deposit Type	MINFILE#	Year	Tonnes	Au g/t	Ag g/t	Mo %	Cu %	Pb %	Zn %
Valentine Mtn.	Leech River	Beau Pre Expl.	Au-quartz Vein	092B108	1990	30,660	14.70					
Lara	Mt. Sicker	Laramide Res.	Nor./Kur. VMS	092B129	1992	528,839	4.73	100.09		1.01	1.22	8.87
Macktush	Alberni Inlet	SYMC Res.	Por. Cu-Mo-Au	092F012	2002	220,000	13.33	51.85		0.77		
Dauntless	Alberni Inlet	SYMC Res.	Volc.Redbed Cu	092F168	2002	27,750	1.30	44.60		22.30		
Fandora	Clayoquot	Doublestar Res.	Cu-Ag Qtz.Vein	092F041	1964	181,434	12.74					
Bear	Kennedy Lake	SYMC Res.	Cu-Ag Qtz.Vein	092F044	1989	160,000	17.40					
Debbie	Alberni Inlet	M. Becherer	Au-quartz Vein	092F079	1990	471,956	6.23					
Domineer	Mt.Washington	Better Res.	Epith. Au-Ag-Cu	092F117	1989	550,298	6.75	32.23				
Catface	Clayoquot	Doublestar Res.	Por. Cu-Mo-Au	092F120	1990	188,000,000			0.01	0.42		
900 (Debbie)	Alberni Inlet	M. Becherer	Au-quartz Vein	092F331	1989	28,285	11.65					
Villalta	Nanaimo Lakes	R. Billingsley	Gossan Au-Ag	092F384	1991	22,677	4.11					
Privateer	Zeballos	Newmex Min.	Au-quartz Vein	092L008	1998	122,470	17.00					
Pilgrim	Merry Widow	H. Cohen	Pb-Zn Skarn	092L057	1978	96,162	0.03	32.64				8.86
Caledonia	Holberg Inlet	J. Shearer	Pb-Zn Skarn	092L061	1972	68,000	0.34	704.20			0.60	7.45
Uebell	Zeballos	Newmex Min.	Cu Skarn	092L155	1961	146,042				2.00		
Red Dog	Holberg Inlet	Moraga Res.	Por. Cu-Mo-Au	092L200	1992	25,000,000	0.44		0.01	0.35		
Smith Copper	Nimpkish	Doublestar Res.	Pb-Zn Skarn	092L208	1981	83,906		64.40		1.69	3.70	12.50
Hushamu	Holberg Inlet	Moraga Res.	Por. Cu-Mo-Au	092L240	1994	173,237,000	0.34		0.01	0.27		



Valentine Mountain Project

- 261 Mineral Claim Units – 6500 hectares
- 2 MINFILE Au-quartz Vein occurrences:
 - Valentine Mtn. 092B108 Discovery Zone
 - Developed Prospect – 30,660 tonnes @ 14.7 g/t gold = 450,700 grams gold on C Vein (indicated resource in 1990 – may be inferred resource under NI43-101)
 - BPEX 092B075 Braiteach Zone
 - Showing - 5 kilometers west of Valentine Mountain
- Gold Mineralization Corridor – 7km X 0.5km



Similar Gold Deposits

British Columbia Exploration Target Model:

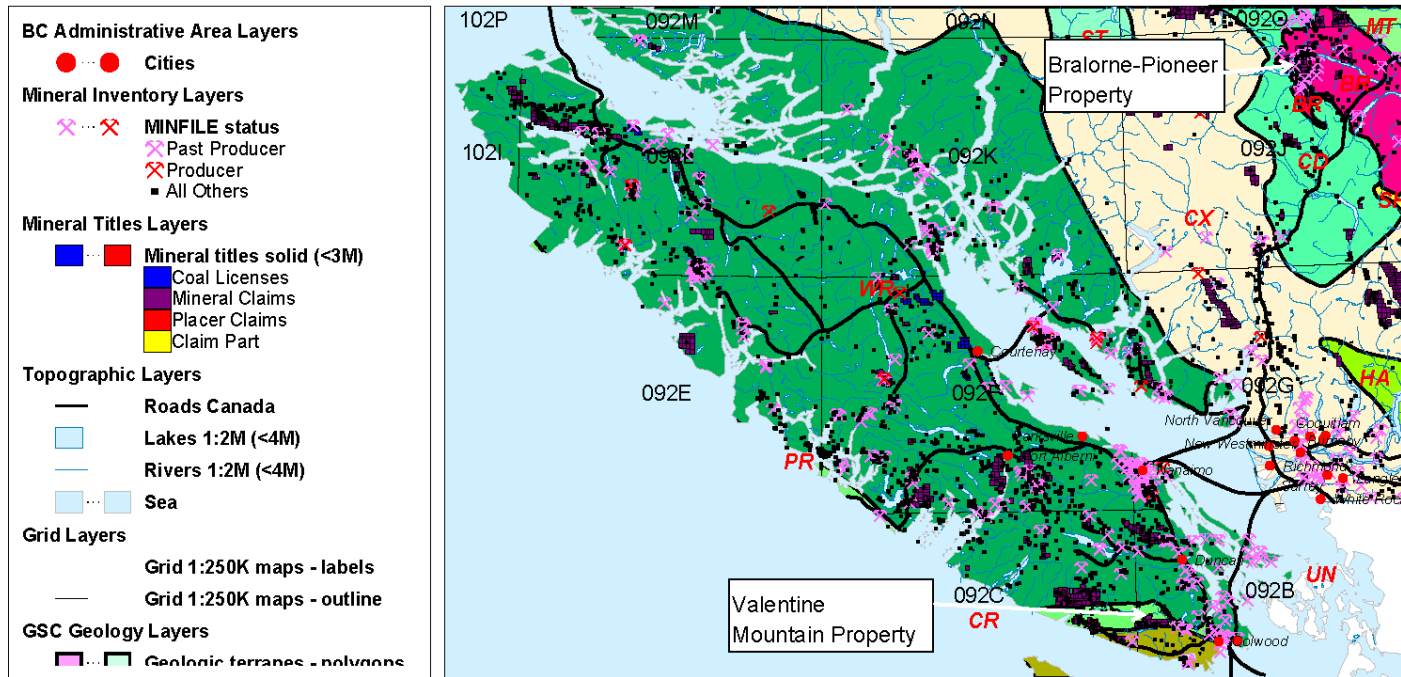
Bralorne-Pioneer (Bridge R.)

- Past production (1899-1983):
 - 7.2 million tonnes
 - 18 grams per tonne
 - 130 million grams gold
 - C\$2.2 billion value at today's gold price

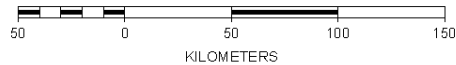


Valentine Mountain Property Terrane Map 1:2,500,000

Figure 1b

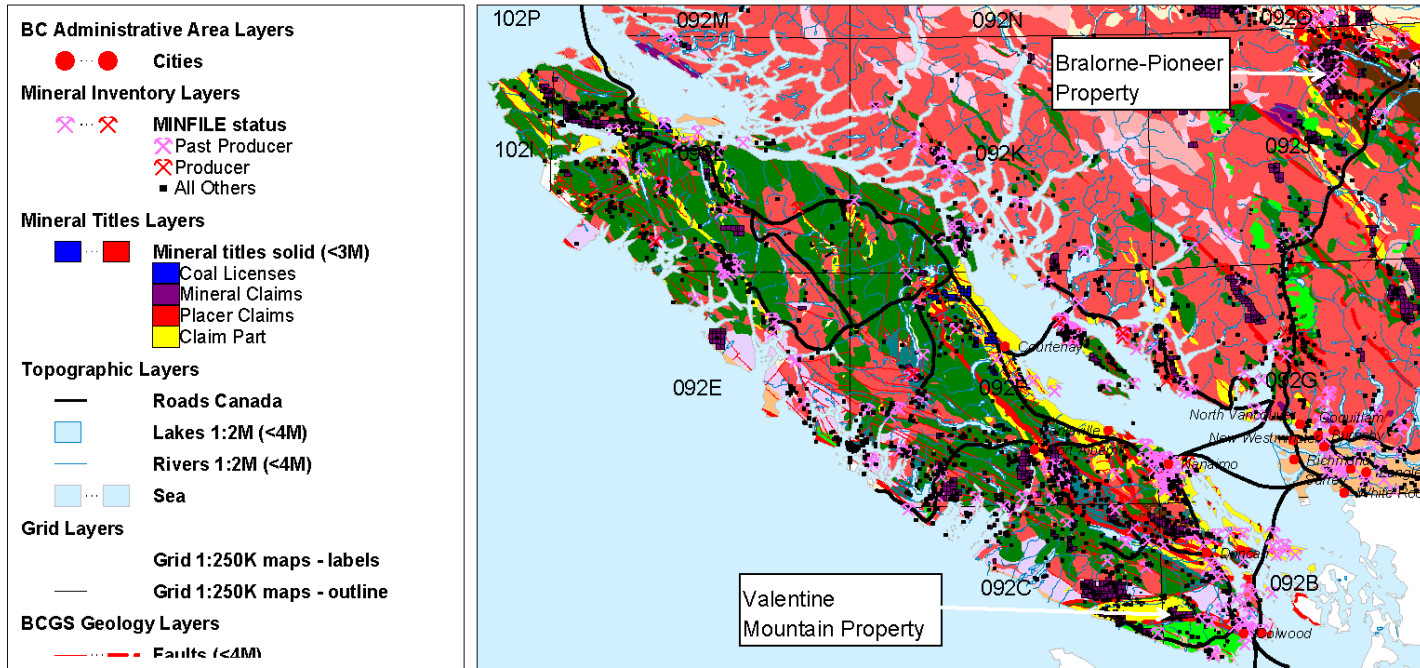


SCALE 1 : 2,500,000

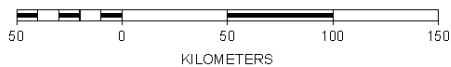


Valentine Mountain Property Geology Map 1:2,500,000

Figure 1c

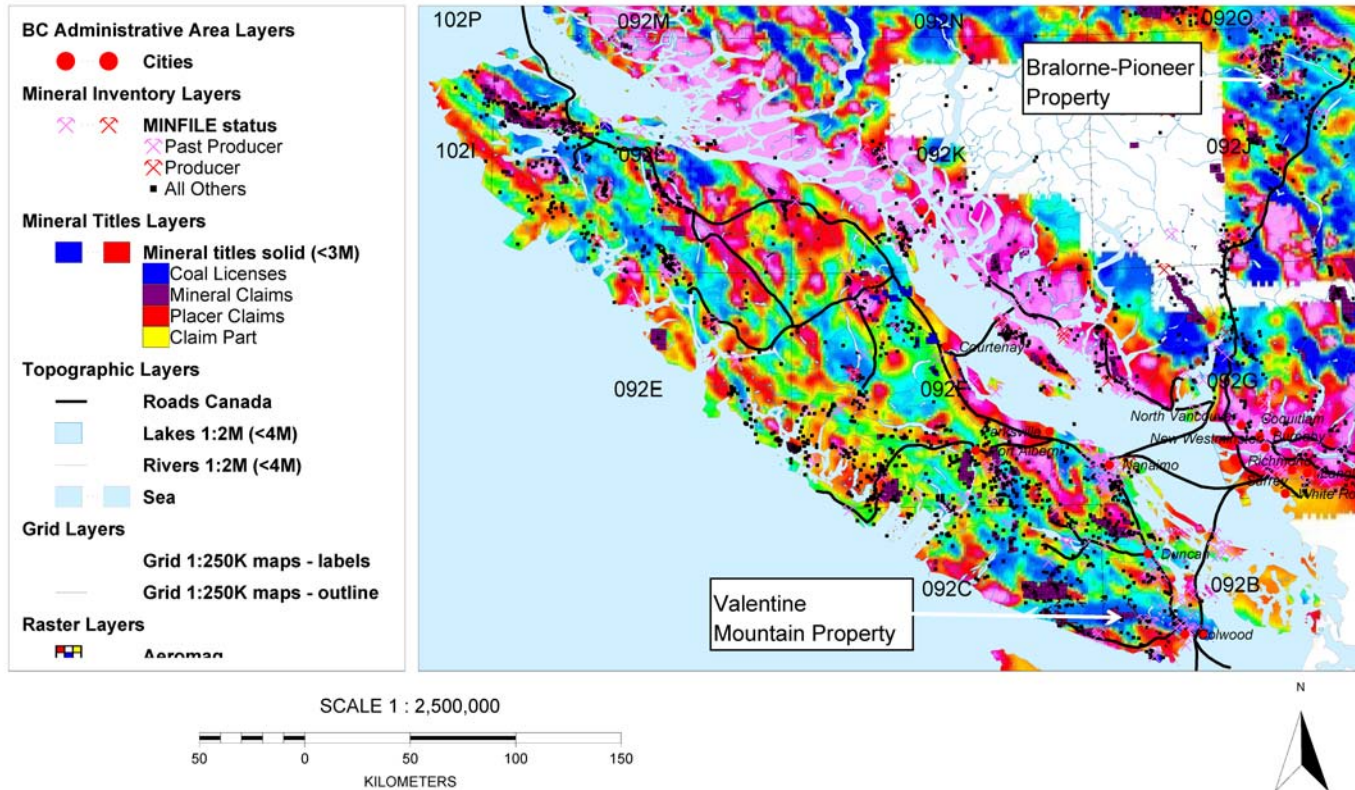


SCALE 1 : 2,500,000



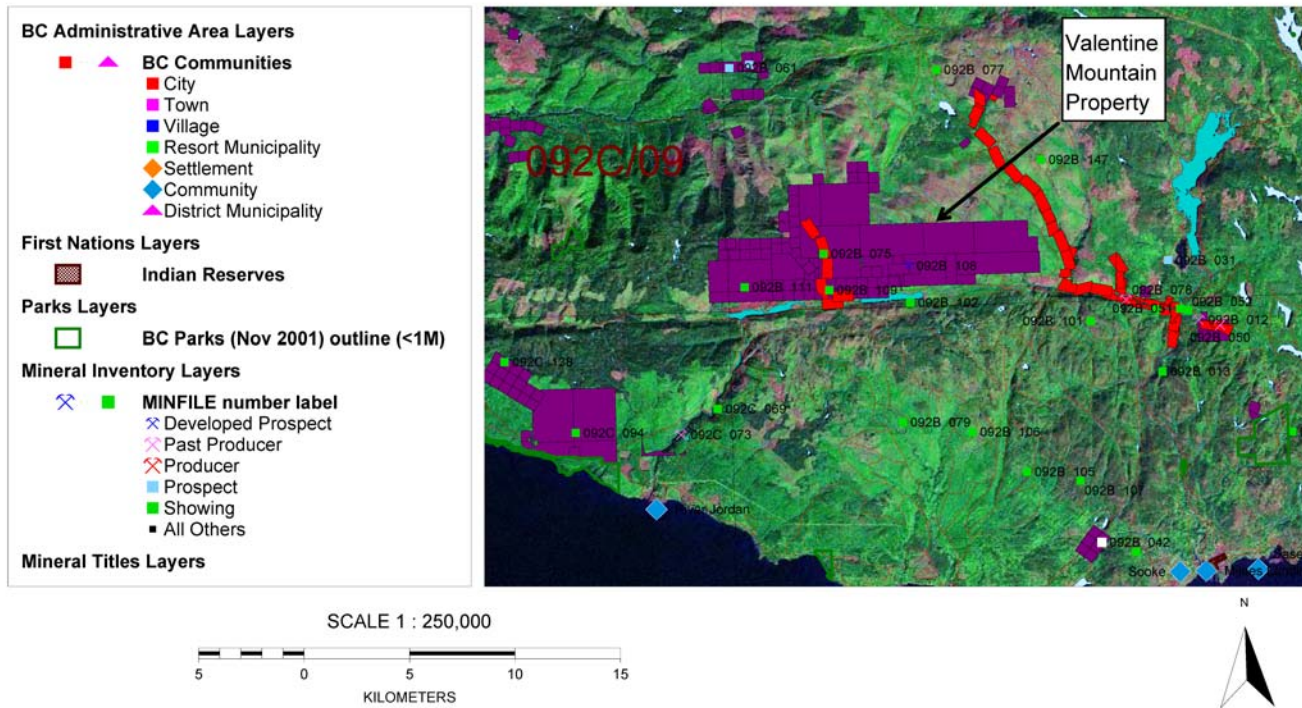
Valentine Mountain Property Aeromagnetic Map 1:2,500,000

Figure 1d



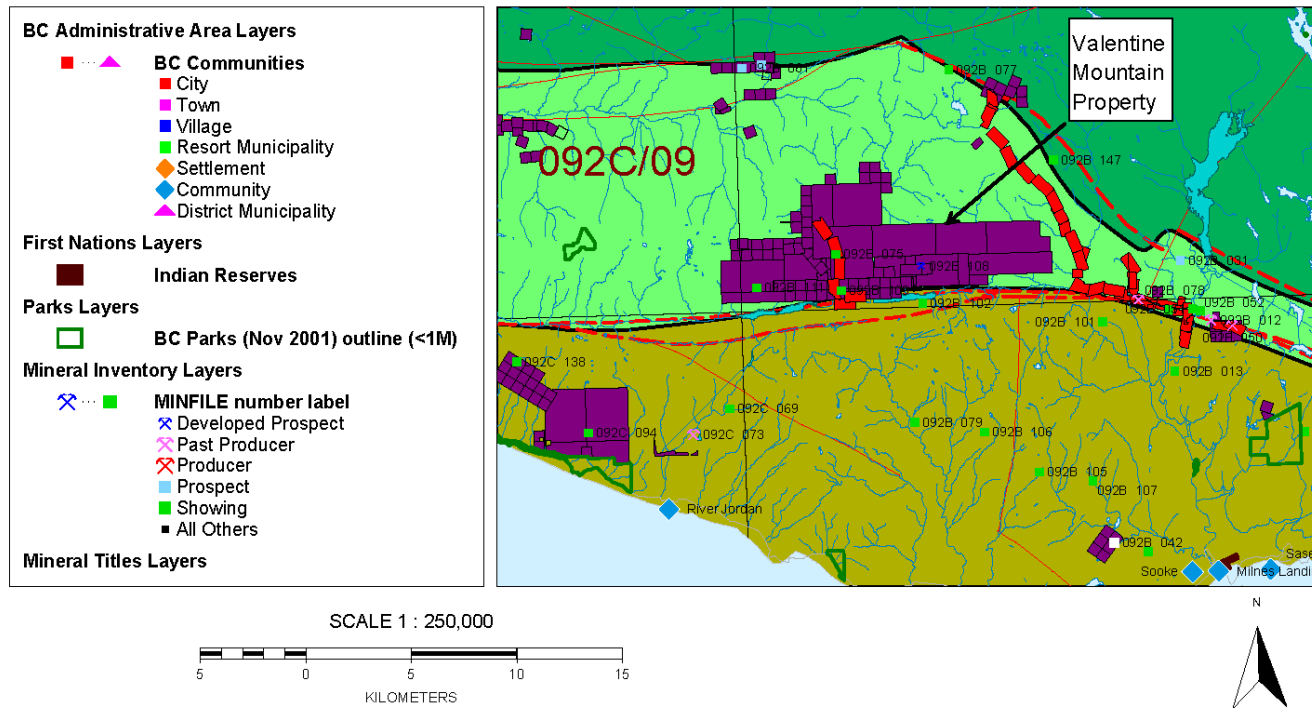
Valentine Mountain Property Location Map 1:250,000

Figure 2a



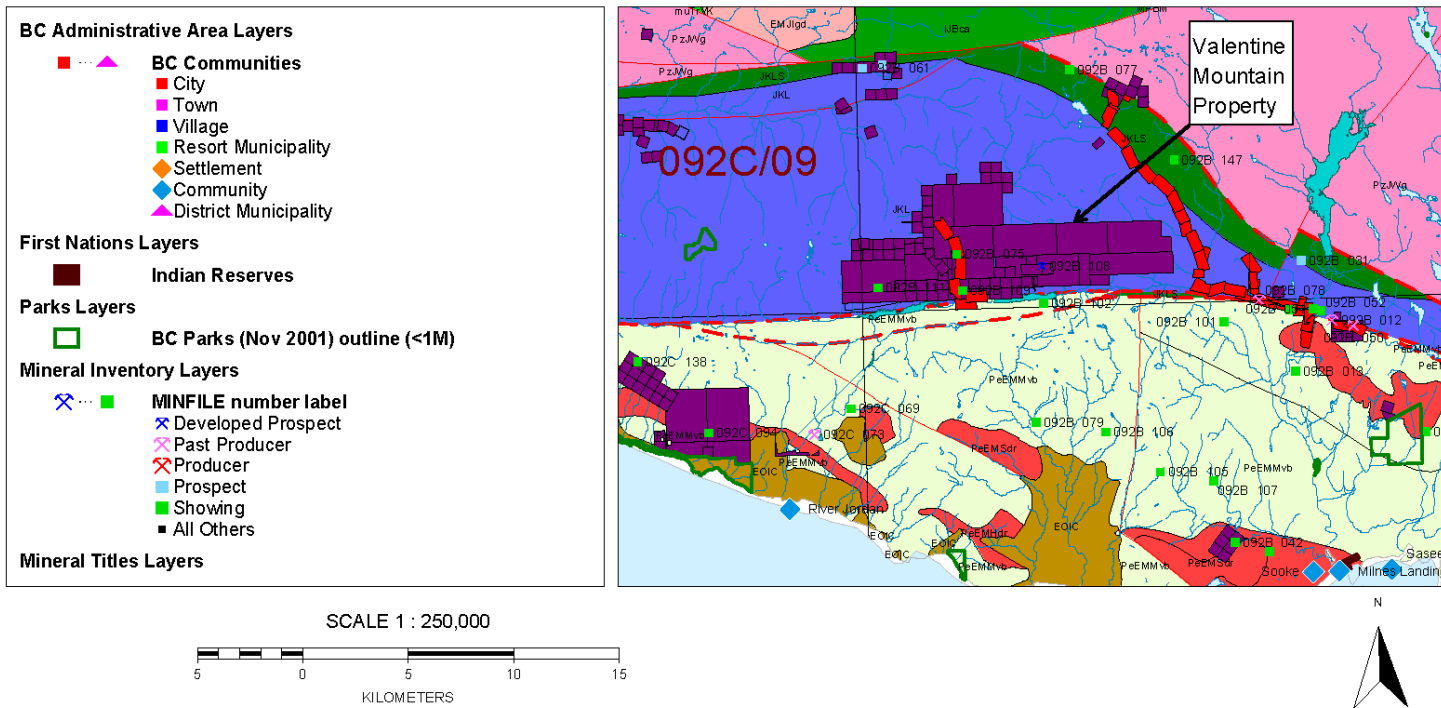
Valentine Mountain Property Terrane Map 1:250,000

Figure 2b



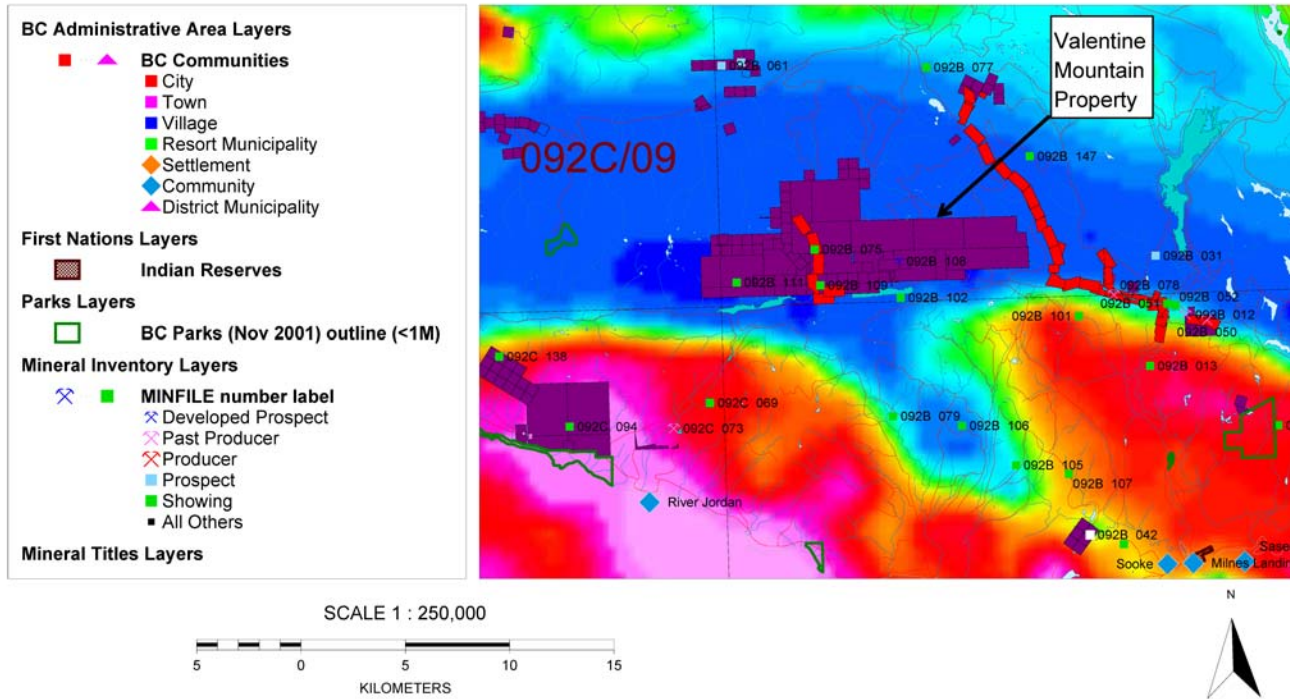
Valentine Mountain Property Geology Map 1:250,000

Figure 2c

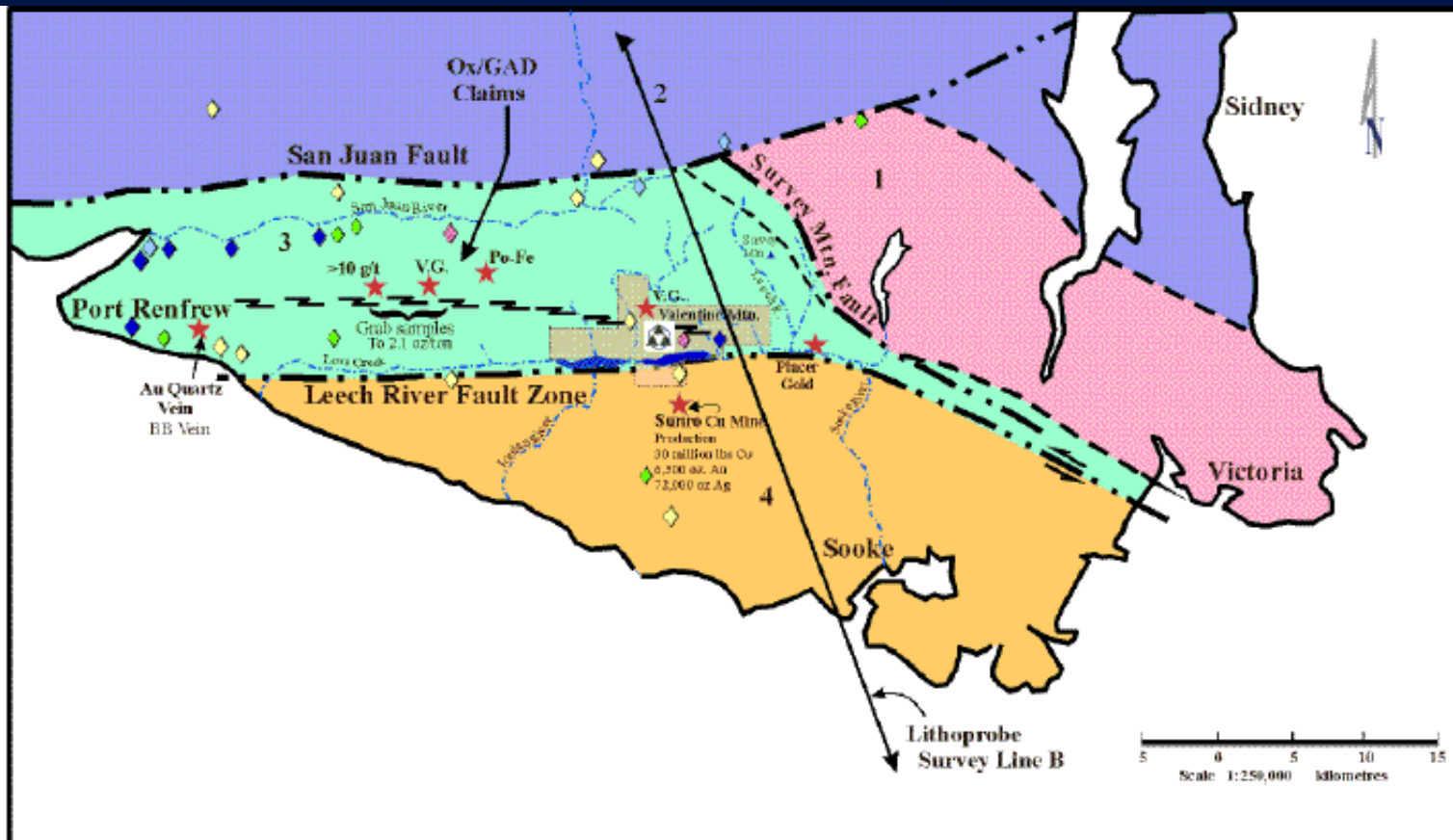









Valentine Mountain Property Aeromagnetic Map 1:250,000

Figure 2d

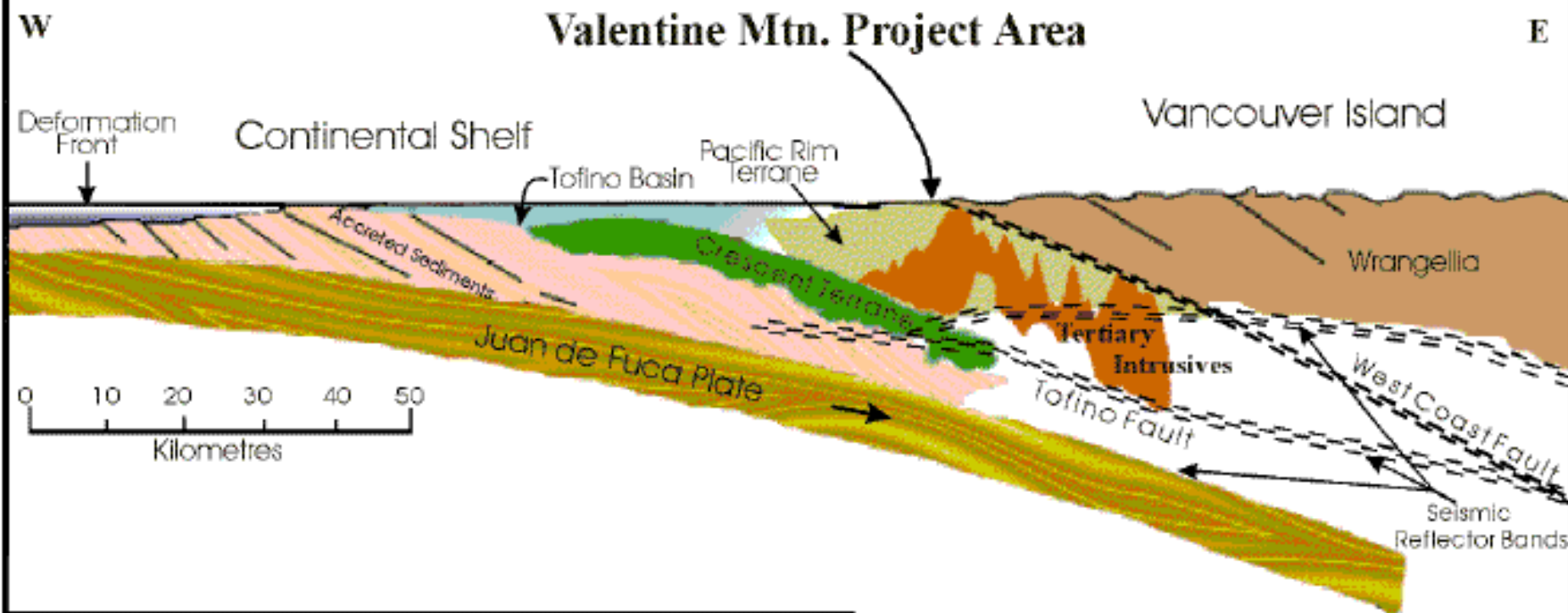






 Beau Pre Explorations Ltd. 108 - 3930 Shelbourne St. Victoria, B.C. V8P 5P		Legend: Geology		Government Stream Sediments			
Valentine Mountain Project British Columbia Leech River Block ~ Geology & Metal Distribution		4. Metchosin Ophiolitic Volcanics 3. Leech River Complex - Metamorphosed Volcano Sedimentary rocks intruded by Eocene diorites 2. Wrangellia Terrane 1. Paleozoic Rocks		 Gold  Antimony  Arsenic  Fluorine  Tungsten		 Rock Samples V.G. Visible Gold Po Pyrrhotite Fe Iron	
Fig. 1	April '98	bpxfaultzone4.cdr					
	Drafted by Media Types		© copyright 1998				





Beau Pre Explorations Ltd.

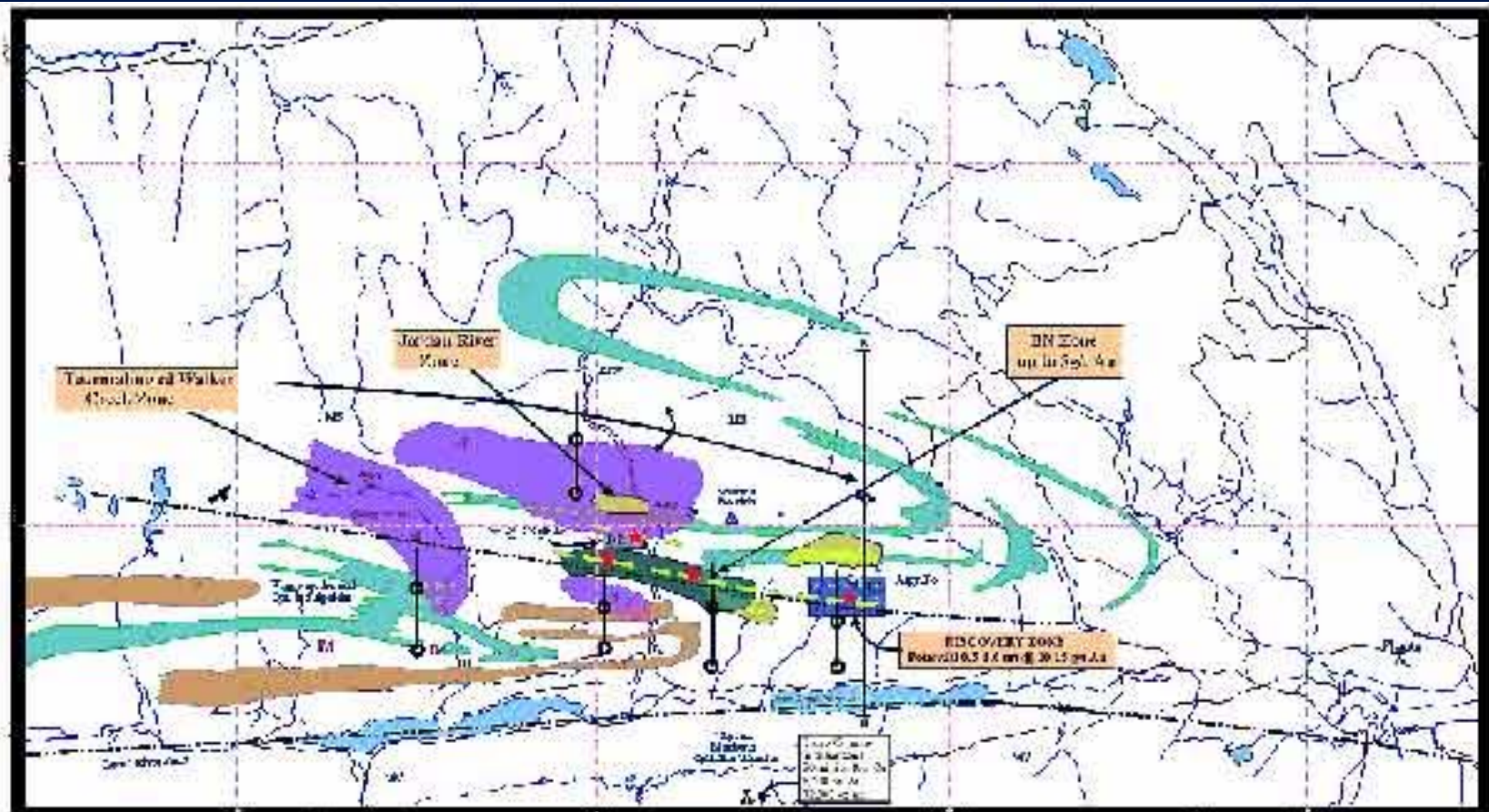
108 - 3930 Shelburne St. Victoria, B.C. V8P 5P6
Valentine Mountain Project



Adapted from Pacific Geosciences / UBC Lithoprobe Survey | Subduction2.cdr | Apr. 1998 | drafted by Media Types

Fig. 2 Subduction Environment of South West Vancouver Island





Scale: 1:50,000

LEGEND:

- Symbol: Fault
- Symbol: Spring
- Symbol: Taurine and Walker Creek Zone
- Symbol: Road
- Symbol: Lake

GEOLOGICAL FORMATIONS

- Green: Taurine and Walker Creek Zone
- Yellow: Jordan River Zone
- Orange: Yarrow Mountain Zone
- Purple: Jordan River Zone
- Light Green: Taurine and Walker Creek Zone
- Light Purple: Jordan River Zone
- Light Orange: Yarrow Mountain Zone

LEGEND

- Orange: Taurine and Walker Creek Zone
- Green: Jordan River Zone
- Yellow: Yarrow Mountain Zone
- Light Green: Taurine and Walker Creek Zone
- Light Purple: Jordan River Zone
- Light Orange: Yarrow Mountain Zone

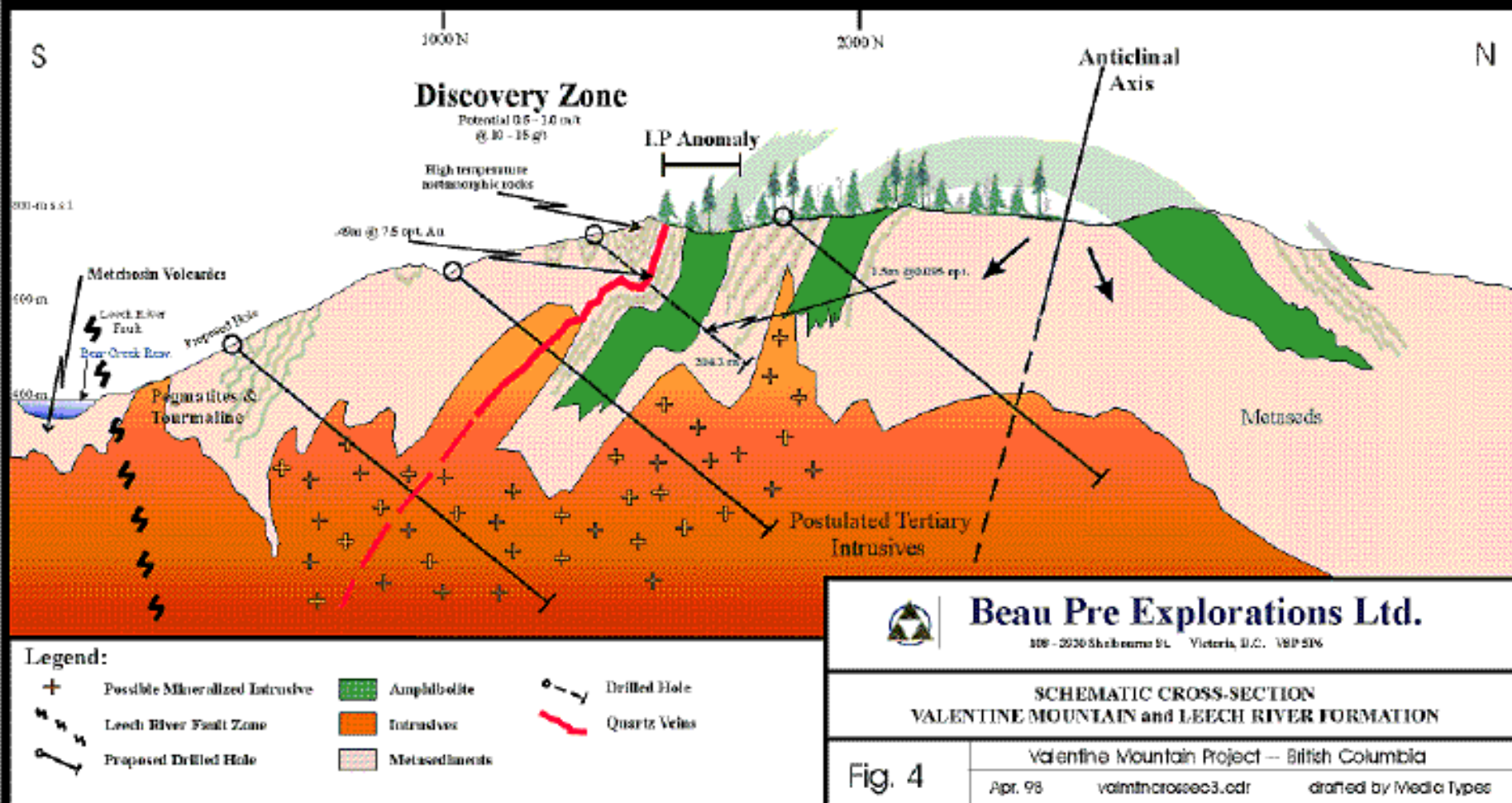


Beau Pre Explorations Ltd.
1000-1000
Vancouver, BC V6Z 1K1

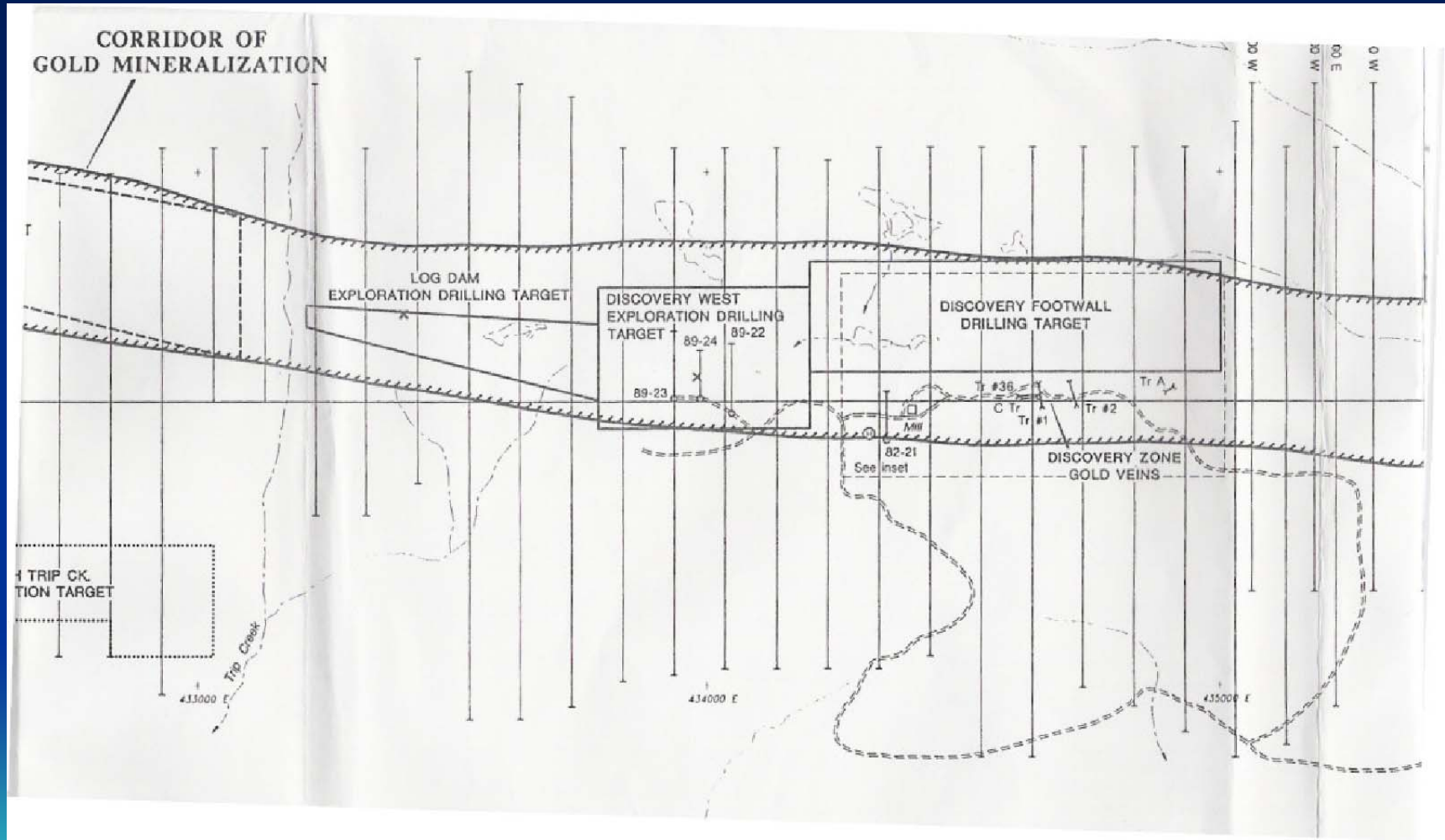
Yarrow Mountain Project
British Columbia
Completion Plan

Fig. 2 - April 2010 | Updated: 11/11/2010 | 040413, 040414, 040415

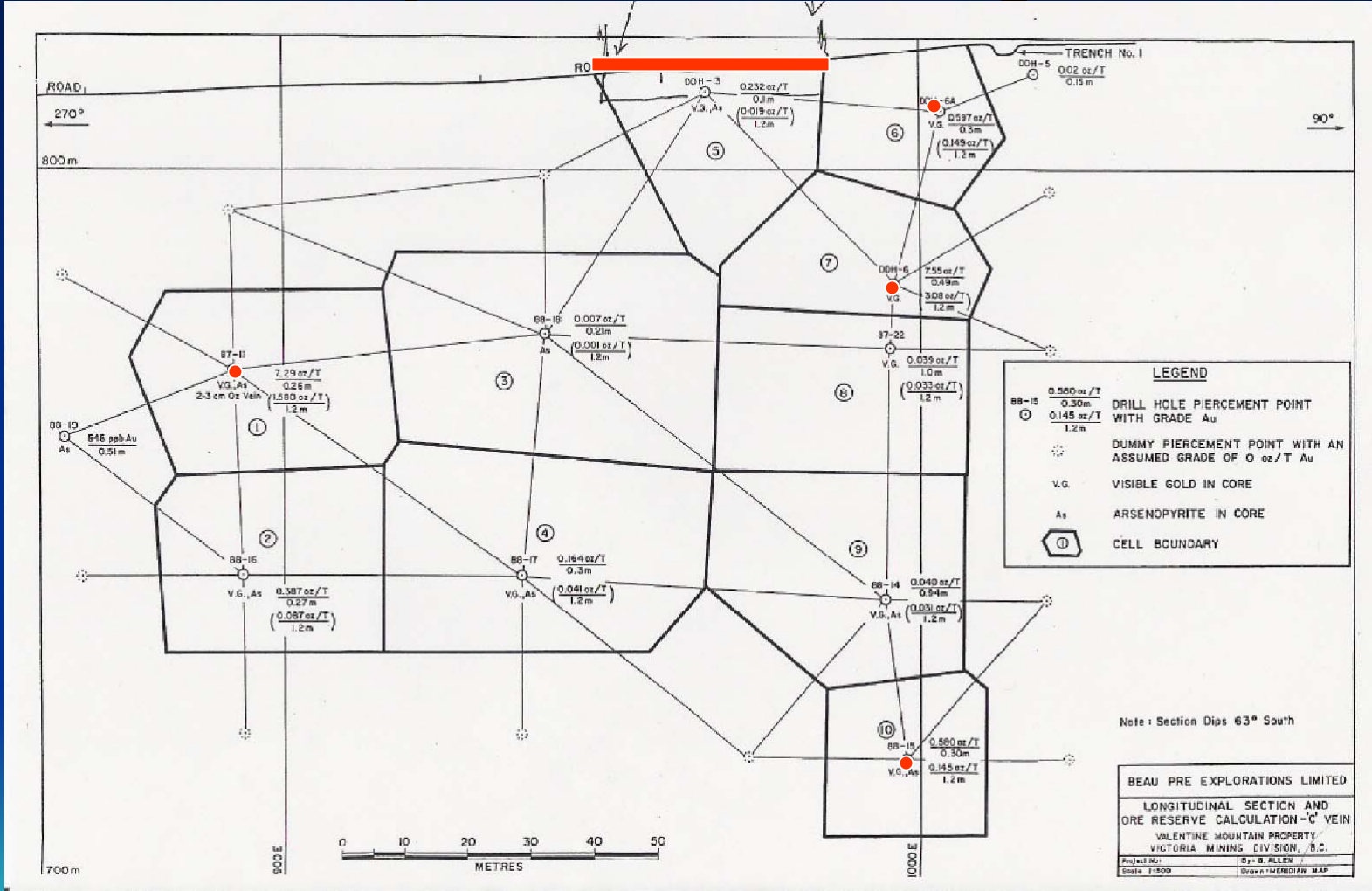




Priority Exploration Targets



Discovery C Vein Long Section



Recent Accomplishments

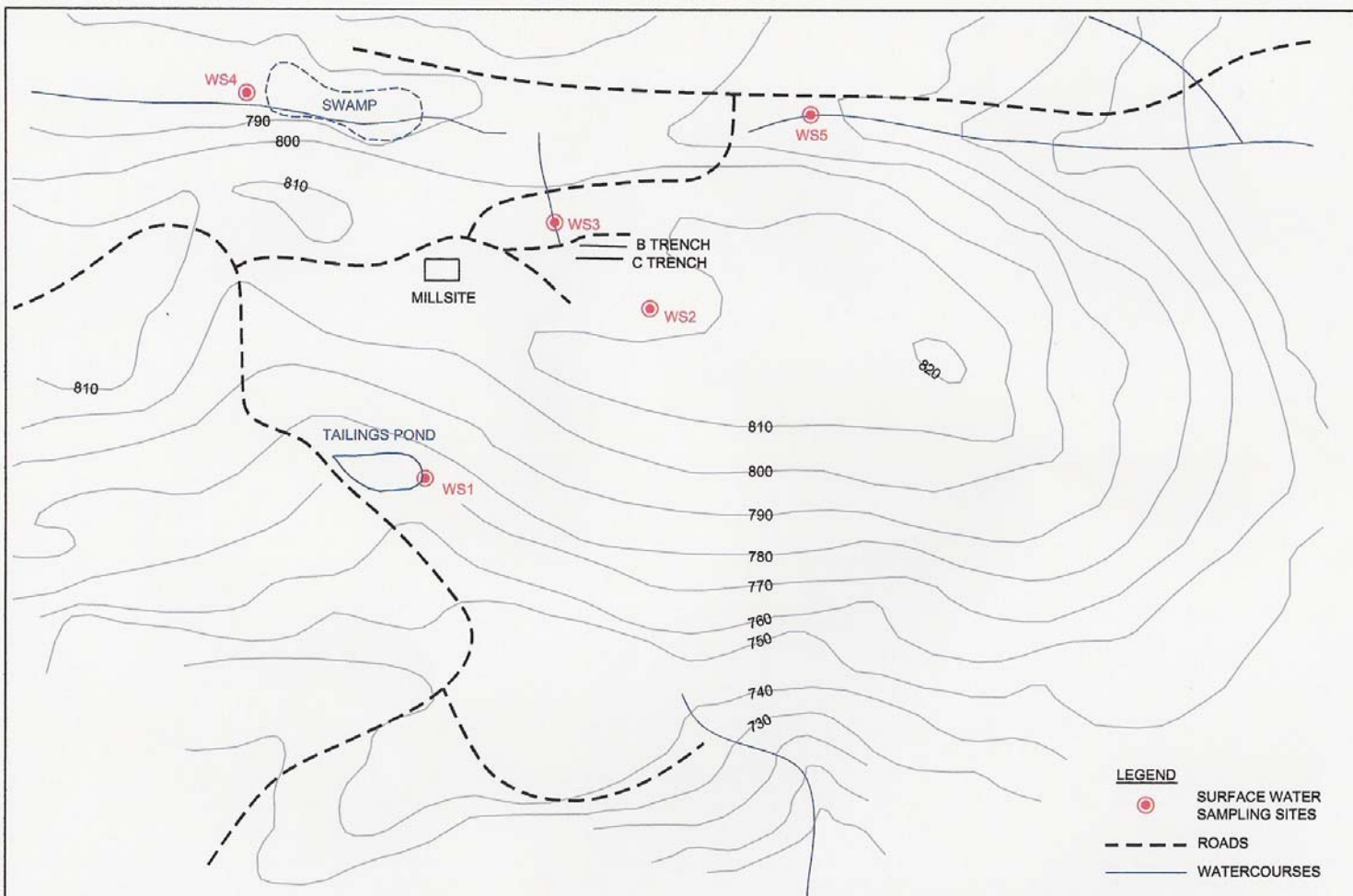
- Established Baseline Environmental Sampling Program by Jacques Whitford
- Commenced G.I.S. Compilation by Don MacIntyre (10-25% complete)
- Completed deep diamond drill hole at Discovery West Target
- Resumed activity at Valentine Mountain



Environmental Program

- Naturally acidic surface waters with elevated Al at all sites, locally Zn and Co
- Dissolved metals in leachates from rock samples below BC discharge standards
- Mineralized rock likely ARD generating
- Footwall rock possibly acid neutralizing
- More sampling recommended, along with further evaluation of tailings pond





FILENAME: BCI60004.2 D02 RO



CLIENT:	BEAUPRE EXPLORATION LTD.	
PROJECT No:	BCI60004.2	DATE: 11-Feb-04
DRAWN BY:	NP	CHECKED BY:

SURFACE WATER SAMPLING LOCATIONS
 BASELINE ENVIRONMENTAL MONITORING STUDY
 VALENTINE MOUNTAIN GOLD DEPOSIT, SOOKE, BC

DWG No:
2

THIS DRAWING WAS ORIGINALLY PRODUCED IN COLOUR



G.I.S. Compilation

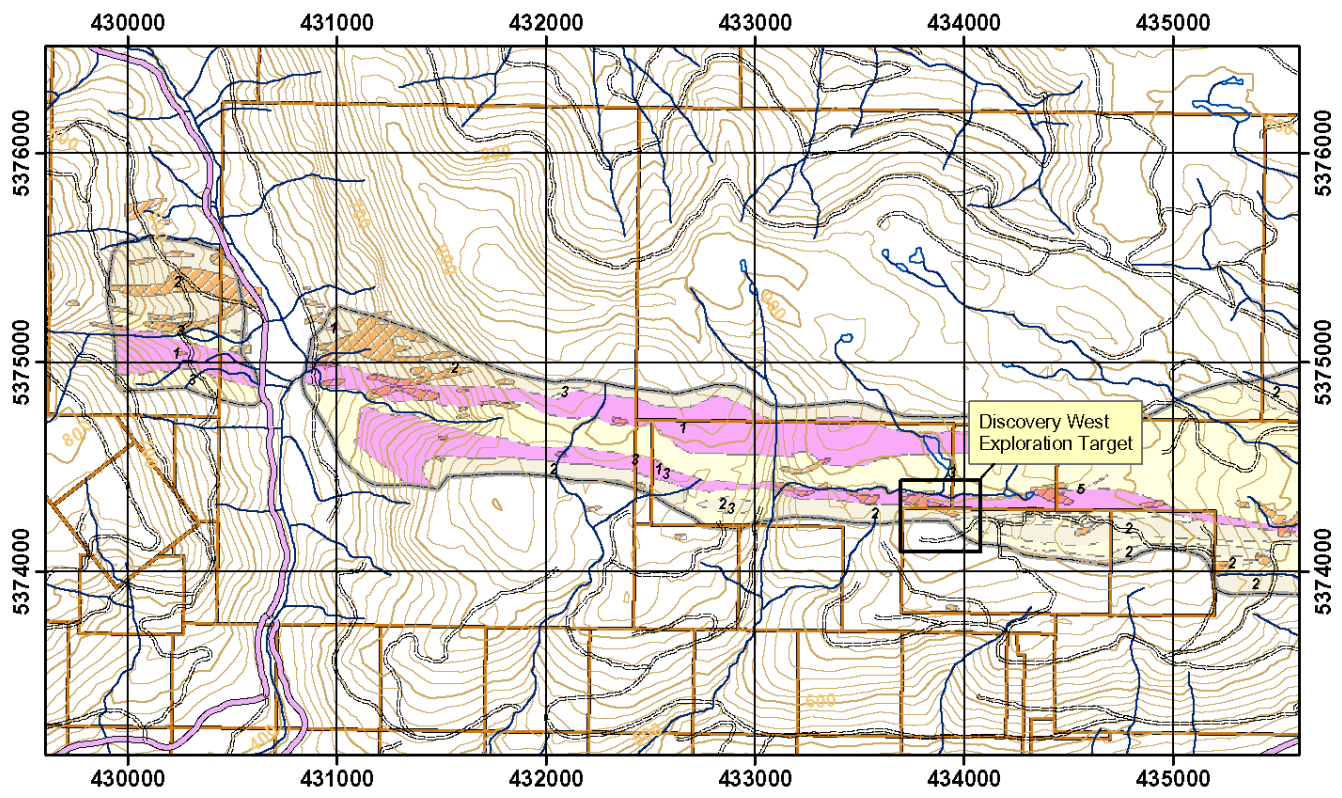
Completed:

- 73 diamond drill hole highlights in 3D
- Topography, survey data, trenches, geological contacts, soil anomalies

Remaining:

- geophysical anomalies, outcrop mapping, trench mapping, surface sampling
- Interpretation and 3-D modeling





Legend **Figure 4a**

Noranda map units		Soil geochem anomaly (>20ppb Au)
quartz diorite	Mineral claim boundary	Limit of detailed mapping
metapelite		
metasandstone		
amphibolite		

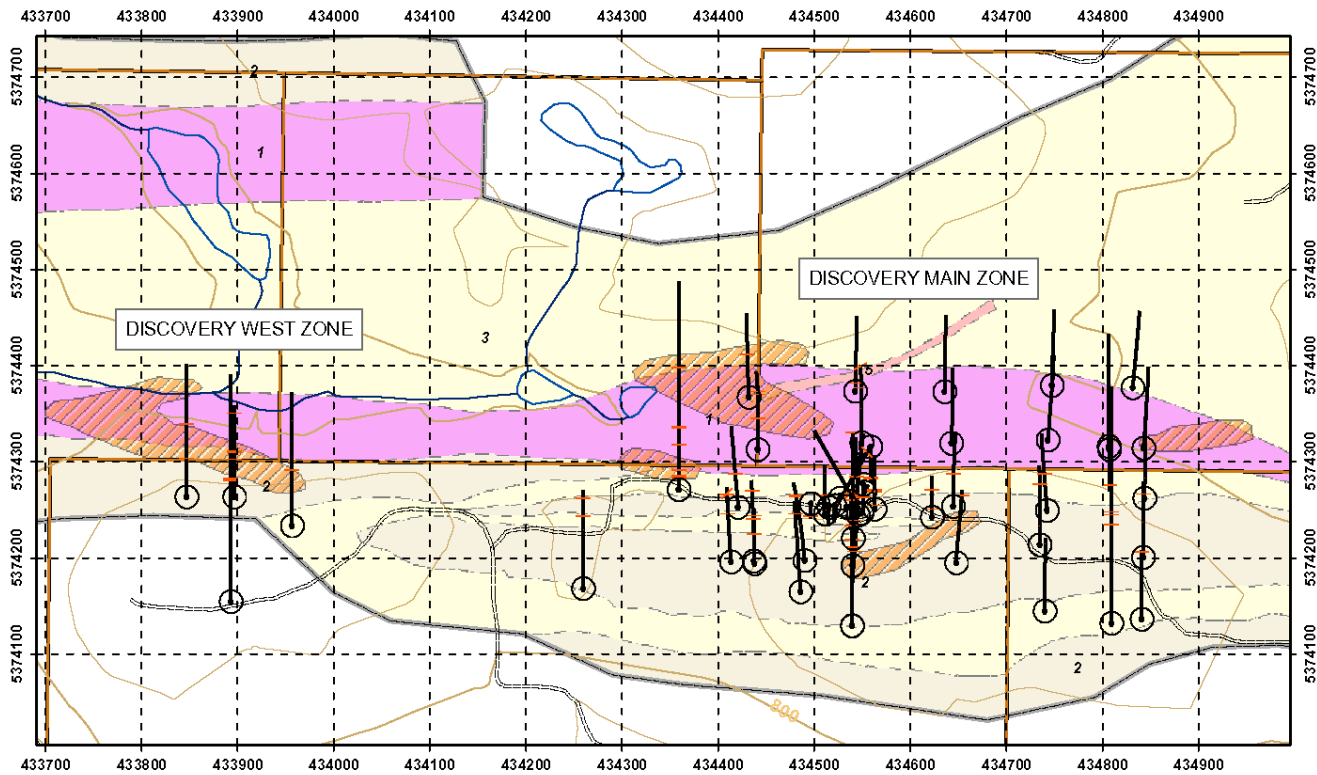
Beau Pre Explorations Ltd.
Valentine Mountain Project

0 500 1,000
Meters

Geology and Claim Map

Projection: UTM Zone 10N, NAD 83 NTS Map Sheet: 92B12
Cartography by: D.G. MacIntyre Last Revision: Feb. 2004





Legend		Figure 4b	
Noranda map units		○	DDH collar
quartz diorite	Soil geochem anomaly (>20ppb Au)	—	DDH surface trace
metapelite	Mineral claim boundary	Au intersection	
metasandstone	Limit of detailed mapping		
amphibolite			

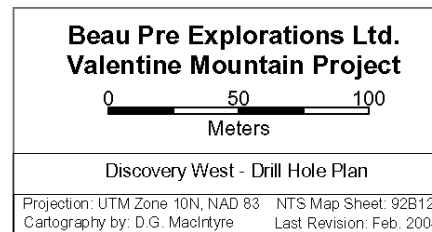
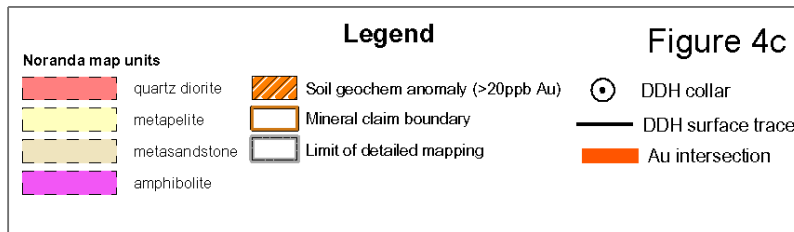
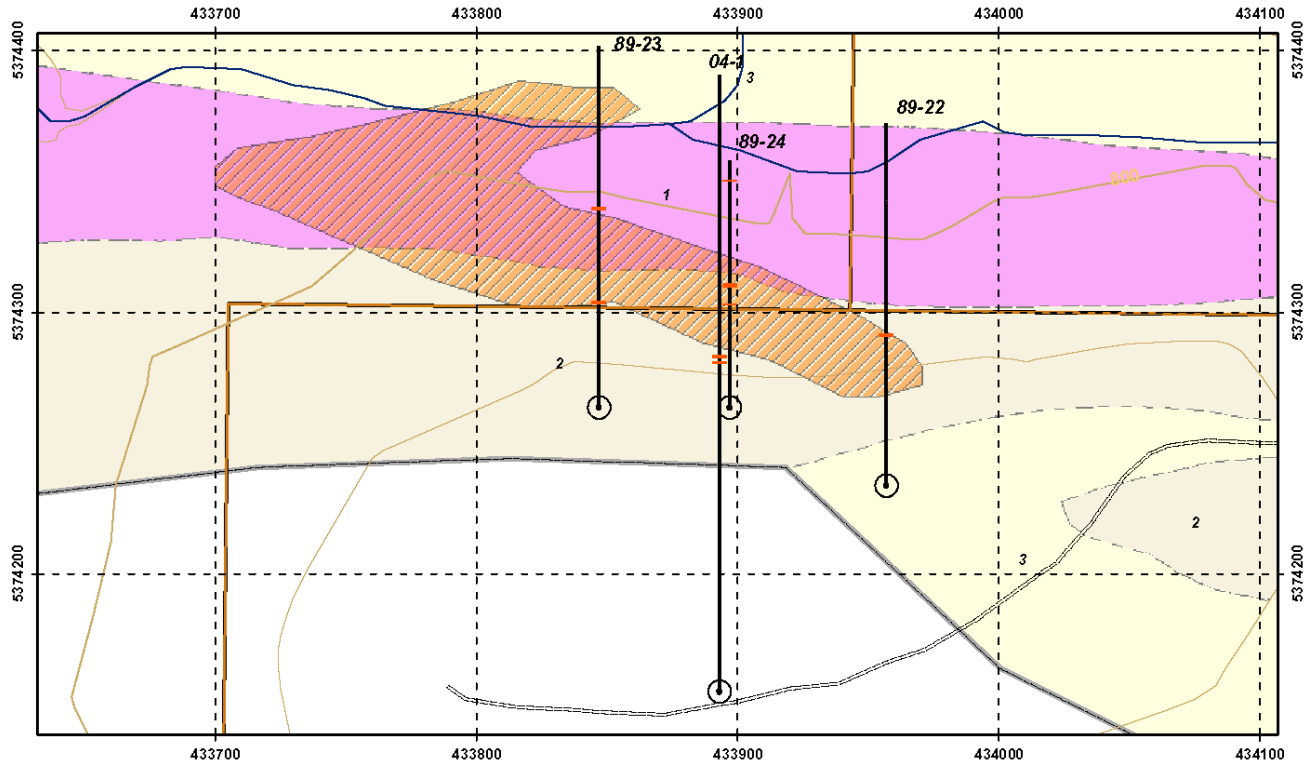
Beau Pre Explorations Ltd.
Valentine Mountain Project

0 100 200
Meters

Geology and Drill Hole Plan

Projection: UTM Zone 10N, NAD 83 NTS Map Sheet: 92B12
Cartography by: D.G. MacIntyre Last Revision: Feb. 2004





Discovery West Drilling

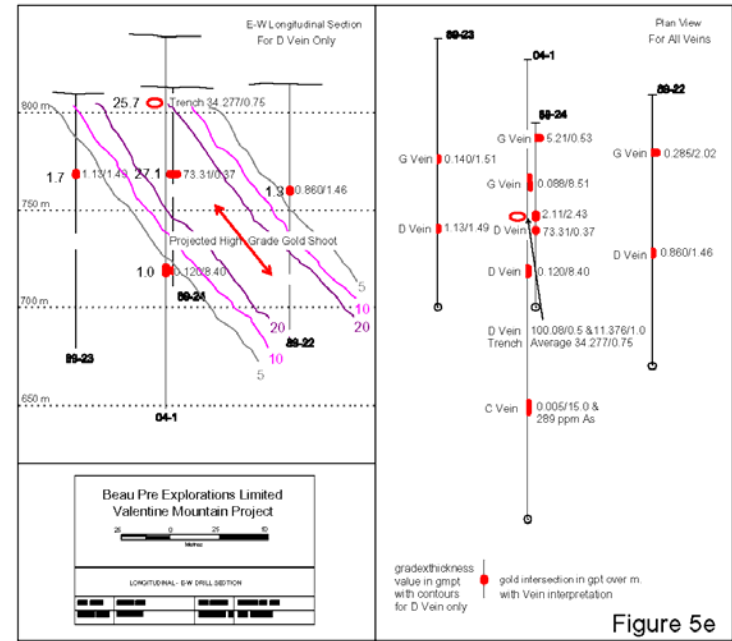
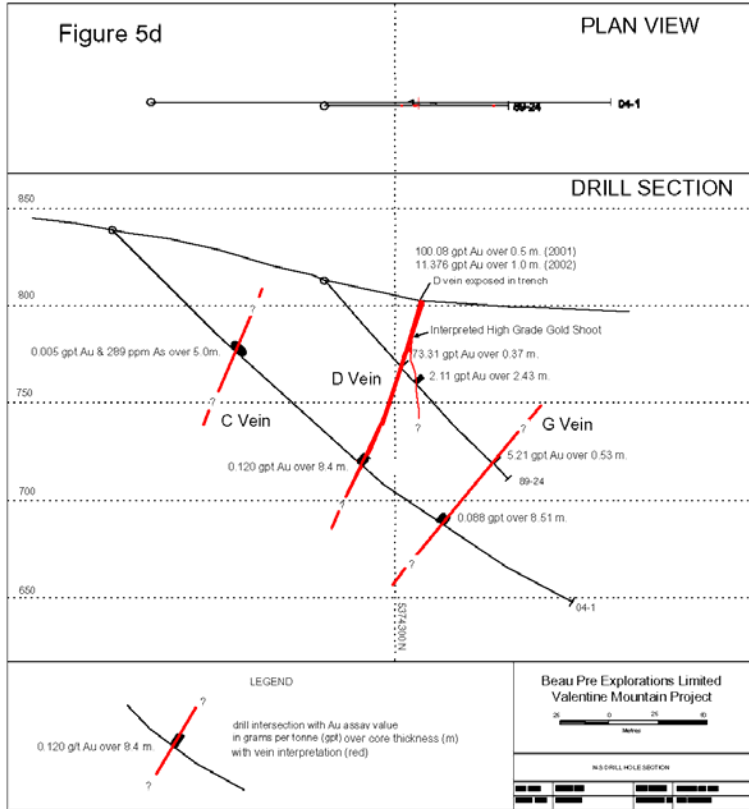
- Successfully completed V-04-01 to test below 89-24 which intersected:
 - D Vein which yielded 0.37 m. @ 73.3 g/t Au at 40 meters below surface, and
 - G Vein which yielded 0.53 m. @ 5.21 g/t Au at 65 meters below surface, and
- Surface trench on D Vein which yielded:
 - 0.5 m. @ 100.08 g/t Au in 2001, and
 - 1.0 m. @ 11.376 g/t Au in 2002



Drilling Highlights

- C Vein - 289 ppm As and 5.1 ppb Au over 15.0 meters at 70 m. below surface
- D Vein - 120 ppb Au over 8.4 m. at -100m.
- G Vein - 88 ppb Au over 8.51 m. at -120m.
- Deep I.P. target - 53.4 ppm As and <5 ppb Au over 9.15 m. in quartz-pyrite at -130m.
- Suggests probable inclined plunge, which may warrant additional drilling





Exploration Objectives

- Continue baseline environmental monitoring
- Complete industry-standard GIS database
- Create predictive 3-D geological model
- Establish Indicated Resources at Discovery Zone to optimize grade control during U/G or surface bulk sampling & test milling on site
- Establish Inferred Resources at Discovery West, Log Dam, or other Targets



Proposed Program

• G.I.S. Modeling	\$ 75,000
• Property Exploration	475,000
• Environmental Monitoring	10,000
• U/G Bulk Sampling	1,849,500
• Processing Plant	537,500
• Scoping Study	50,000
Total	\$2,997,000



Investment Opportunity

1. Established junior company holds large property with excellent infrastructure
2. Long local history and strong project continuity – Bob Beaupre – 27 years
3. Leading area exploration play in a high-potential, under-explored area
4. High quality gold exploration targets during period of commodity price growth

