

Refer to this map as 93 H/4 EAST EDITION 1 ASE SERIES A 791

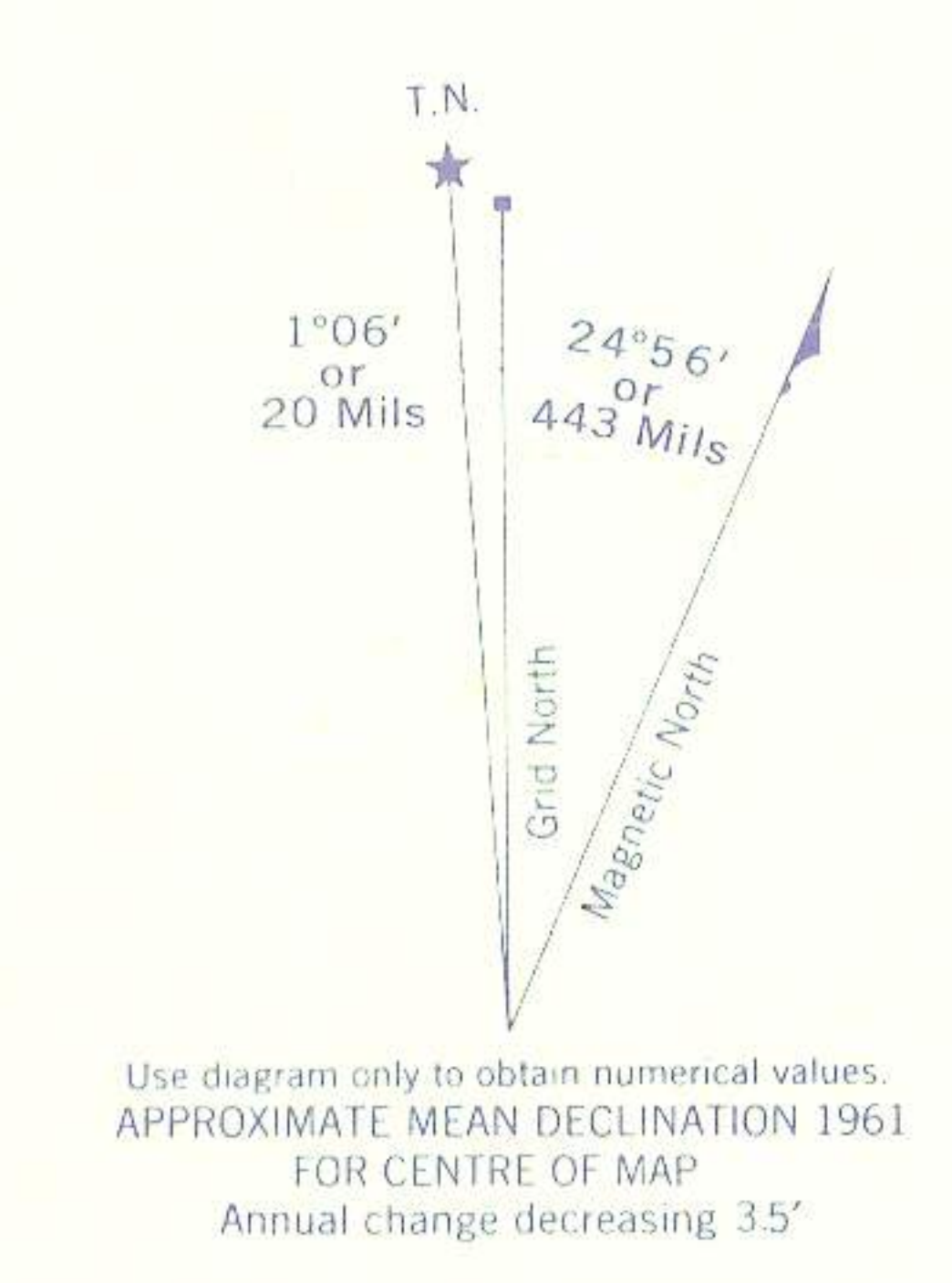
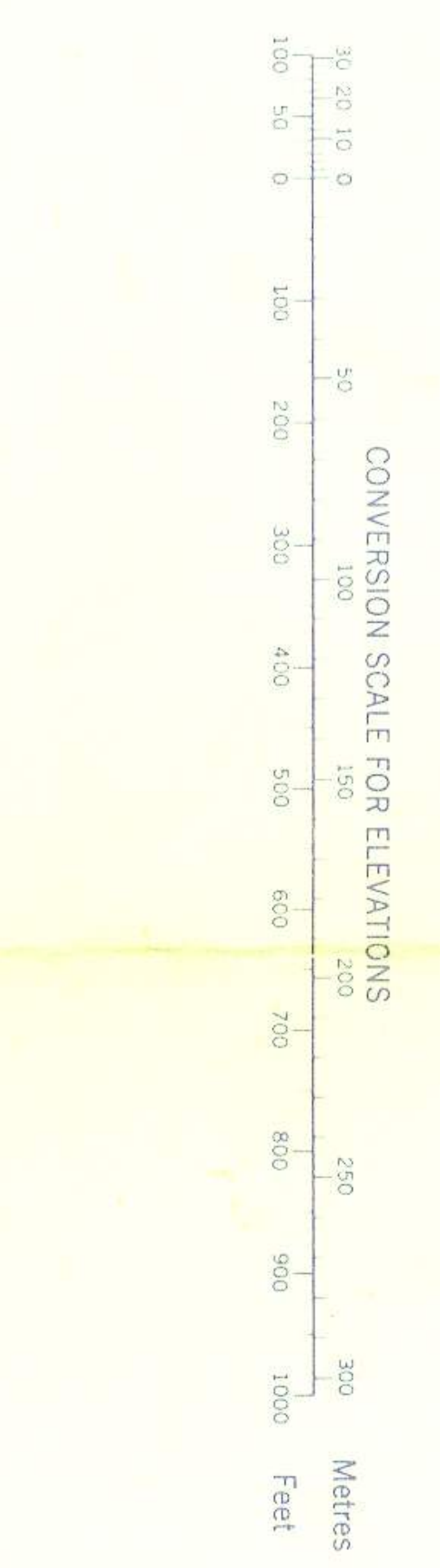
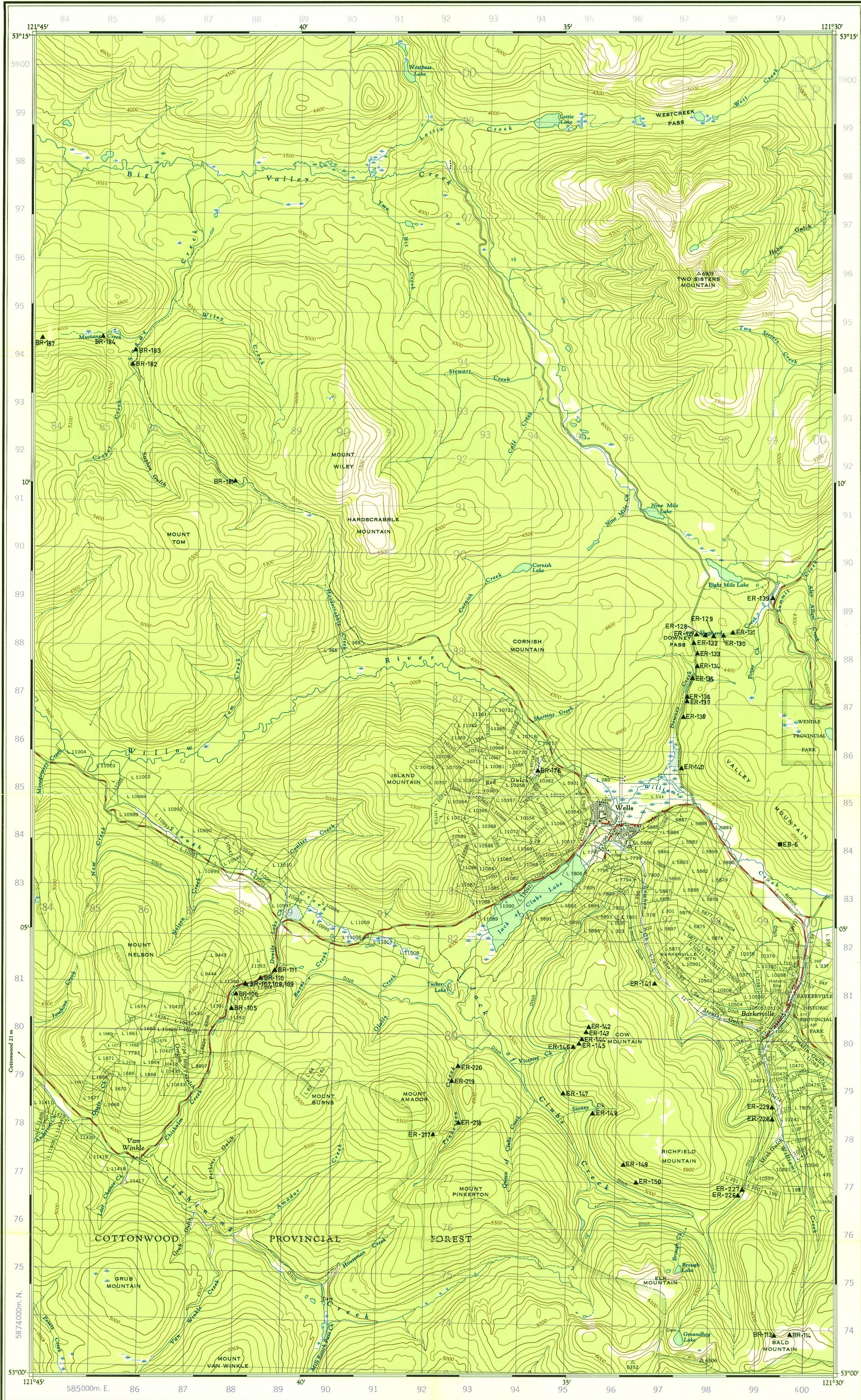


Table with 2 columns: Grid Zone Designation (10U) and 100,000 M Square Identification (EQ 10 EP 10). It includes instructions on how to use the grid for location finding and a small diagram of a square grid.

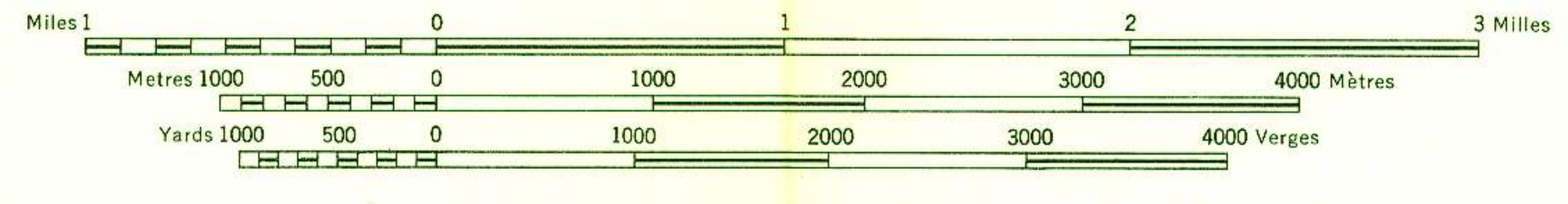
ONE THOUSAND METRE UNIVERSAL TRANSVERSE MERCATOR GRID ZONE 10

Produced and printed by the SURVEYS AND MAPPING BRANCH, DEPARTMENT OF MINES AND TECHNICAL SURVEYS, 1961, from air photographs taken in 1955.

Établie et imprimée par la DIRECTION DES LEVÉS ET DE LA CARTOGRAPHIE, MINISTÈRE DES MINES ET DES RELEVÉS TECHNIQUES EN 1961, d'après les photographies aériennes prises en 1955.

WELLS CARIBOO DISTRICT BRITISH COLUMBIA

SCALE 1:50,000 ÉCHELLE



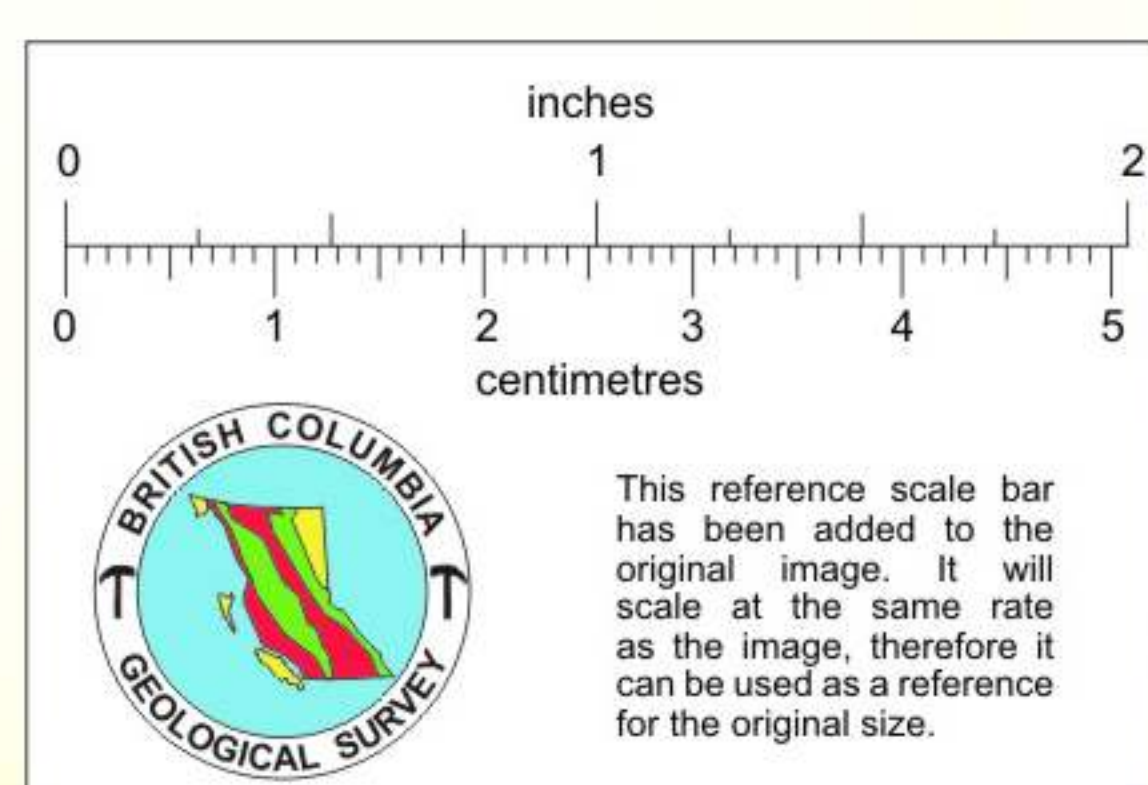
CONTOUR INTERVAL 100 FEET Elevations in Feet above Mean Sea Level North American Datum 1927 Transverse Mercator Projection MAGNETIC DECLINATION 26° 02' EAST AT CENTRE OF MAP 1961 Annual change (decreasing) 3.5'

ÉQUIDISTANCE DES COURBES 100 PIEDS Élévations en pieds au-dessus du niveau moyen de la mer Réseau géodésique nord-américain unifié (1927) Projection transverse de Mercator DÉCLINAISON MAGNÉTIQUE AU CENTRE DE LA FEUILLE EN 1961: 26° 02' EST Variation annuelle (décroissante) 3.5'

Legend table listing symbols for various features: Building, School, Church, Mine, Lighthouse, Power transmission line, River with bridge, Stream, Lake, Marsh, Depression contours, Barn, Post Office, Cemetery, Mine or fosse à ciel ouvert, Phare, Ligne de transport d'énergie, Rivière sec pont, Cours d'eau intermittent, Lac intermittent, Marais ou marécage, Courbes de cuvette, Grange, Bureau de poste, Cimetière, and various symbols for roads and trails.

Legend table listing symbols for roads, routes, and other features: Road, Route, Hard surface, all weather, Road surface, all weather, Road surface, dry weather, Cart track, Trail or portage, Railway, normal gauge, single track, Horizontal control point, with elevation, Bench mark, with elevation.

Tableau d'assemblage du système de référence cartographique nationale. A grid showing the map's position within the national topographic system, with coordinates and sheet numbers.



1955

WELLS 93 H/4 E EDITION 1

681607 Coloidal