

# 497

092H/15E

**L. J. MANNING & ASSOCIATES LTD.**

CONSULTING MINING AND GEOLOGICAL ENGINEERS

310-890 WEST PENDER STREET VANCOUVER 1, B. C.

681278  
92H

OFFICE PHONE:  
683-8861

RESIDENTIAL PHONE:  
L. J. MANNING - 688-8090

June 11, 1975

The President and Directors  
New Pyramid Gold Mines Inc.  
300 - 890 West Pender Street  
Vancouver, B.C. V6C 1J9

Dear Sirs:

RE: AU CLAIMS ASPEN GROVE

An area of 1000 feet by 1000 feet around your Aspen Grove gold showing has been tested by a soil sampling survey. Good correlation between values anomalous in copper and anomalous in gold is observed. Such gold-copper correlation was observed in the diamond drilling, even for the low order values obtained.


A single high gold-copper soil was taken in undisturbed soil near the showing and demonstrates the probable validity of the survey method. Two trends or areas are shown as being worthy of further work. Cross sections A-A and B-B on the enclosed Map No. 75-2 should be examined.

It is recommended that these sections be diamond drilled with short holes, and that the sum of \$15,000 be made available for such testing.

Positive results from this drilling will confirm the validity of the survey method and will result in the recommendation for surveying the entire area.

Yours truly,

L. J. MANNING & ASSOCIATES LTD.

  
L.J. Manning (P.Eng. Mining)

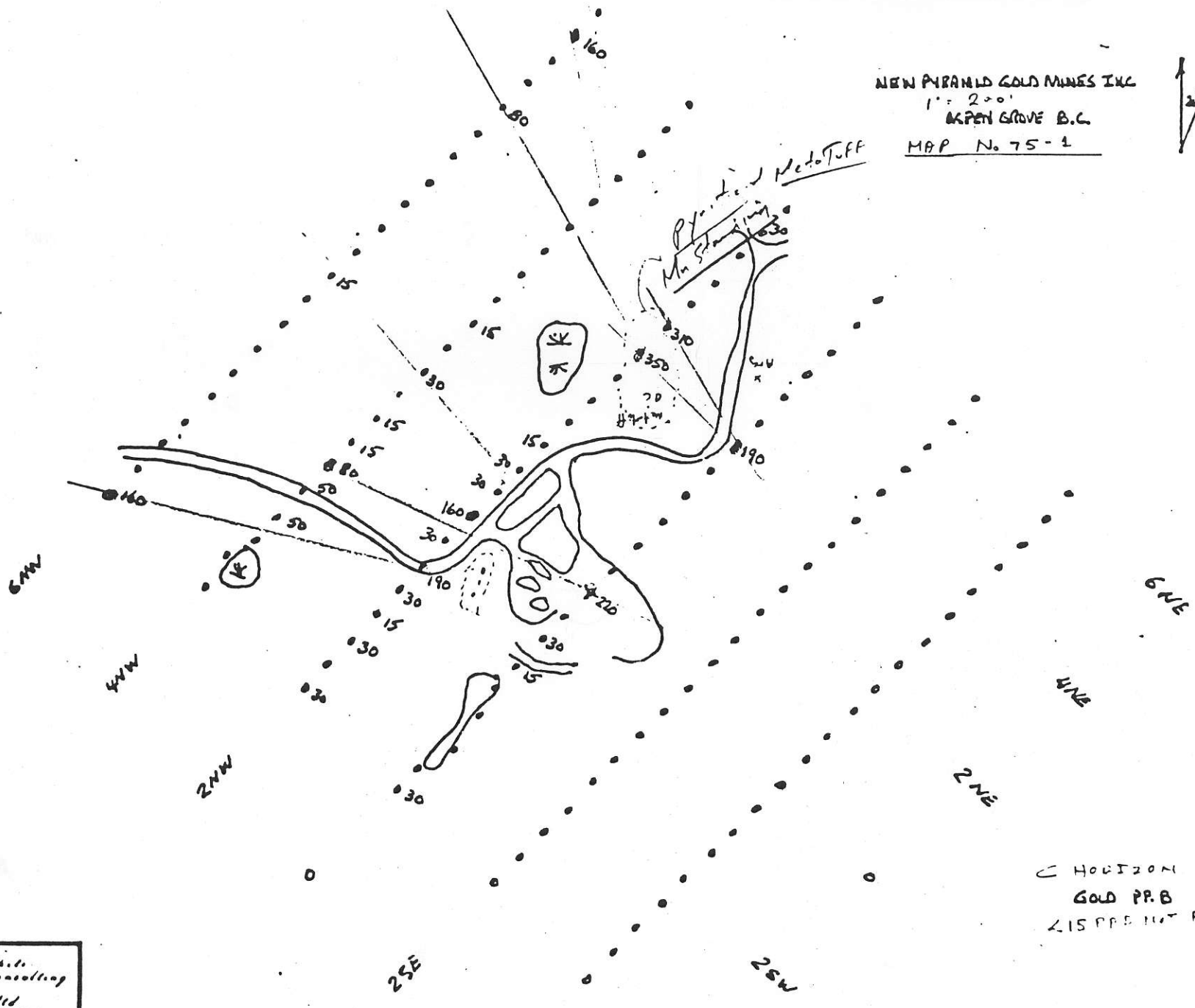
LJM:h

NEW PYRAMID GOLD MINES INC

1" = 200'

ASPEN GROVE B.C.

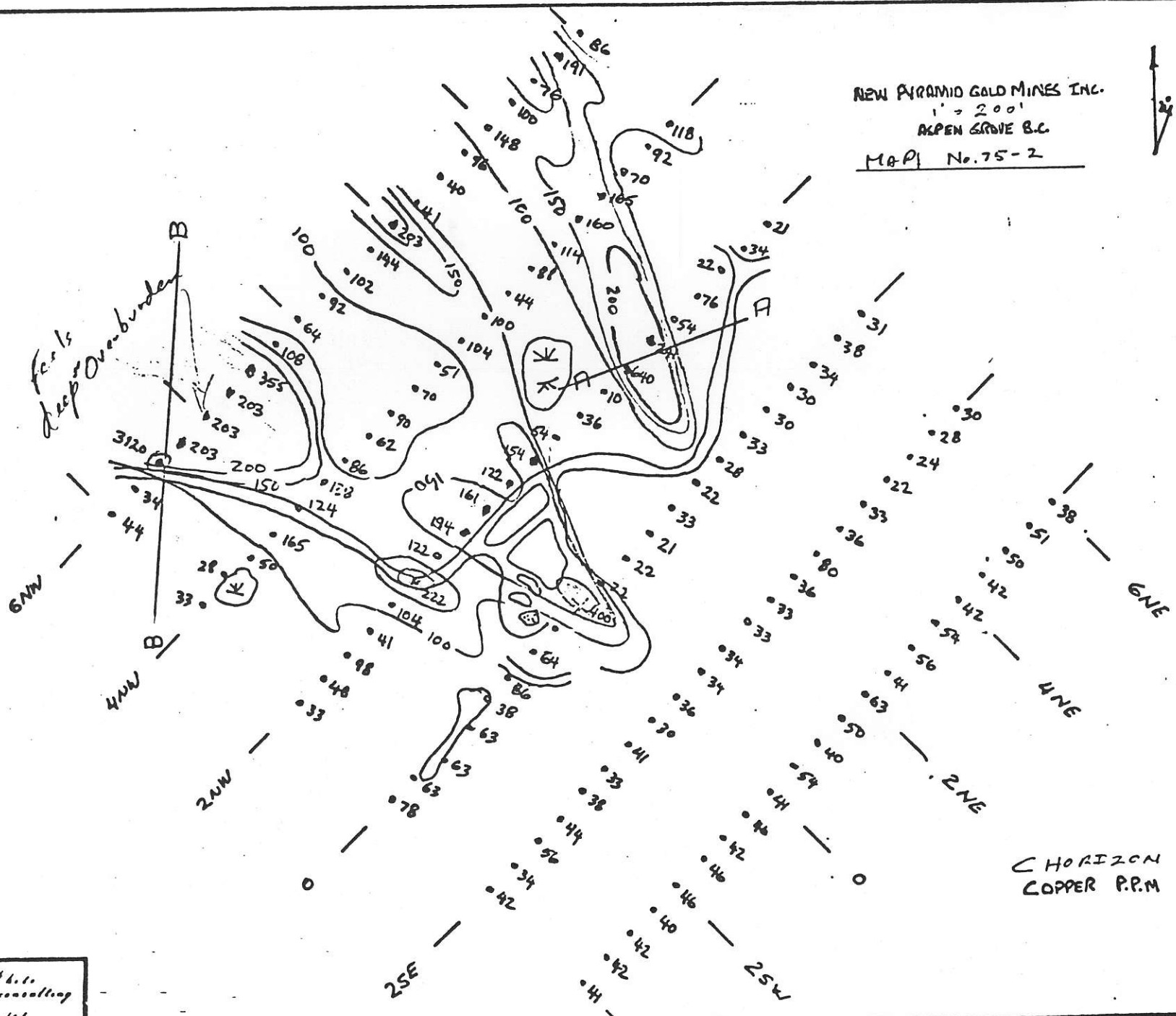
MAP No. 75-1



Ston & Warr  
geophysical consulting  
&  
minerals ltd

C HORIZON  
GOLD P.R.B.  
215 P.P.B. NOT FLOORED

NEW PYRAMID GOLD MINES INC.  
 1' = 200'  
 ALPEN GROVE B.C.  
 MAP No. 75-2



CHORIZON  
 COPPER P.P.M

Simon & White  
 geophysical consulting  
 3  
 111