

RICO COPPER MINES LTD.
Lucky Star Property
Laidlaw B.C.

Diamond Drilling in 1951 .

Underground.

U-1	-	183	feet.	
U-2	-	142	"	
U-3	-	<u>115</u>	"	440.0 ft.

Surface.

S-25	-	209.0	'	
26	-	166.0	"	
27	-	350.0	'	
28	-	123.0	'	
29	-	351.0		
30	-	441.0		
31	-	351.0		
32	-	<u>105.0</u>		<u>2,096.0</u>
Total - 1951				2,536.0 '
1950				<u>1,920.0</u> '
TOTAL				4,456.0 '

**RICO COPPER MINES LTD.
Lucky Four Property
Laidlaw B.C.**

DIAMOND DRILL RECORD (Surface)

D.D.H. No. 2

Dip - ~~flat~~ **flat** Drilled - 1950
 Direction - ~~S 42 W (Mag)~~
 Location - ~~Face of cliff~~ **Face of cliff** Lat. 879', Dep. 3873' Elev. 6187'

From	To	Description	Length	Am	Ag	Cu	
0.0	15.0	Garnetite with chalcopyrite.					
		Sample No. 27 - 0.0' - 5.0'	5.0'	Tr.	Tr.	1.15%	
		" 28 - 5.0 - 10.0'	5.0	Tr.	Tr.	0.35	
		" 29 - 10.0 - 15.0'	5.0	0.0005	0.30	1.40	
		Average	0.0'-15.0'	15.0'	0.0017	0.01	0.97%

D.D.H. No. 3

D.D.H. No. 3

Dip - -60° Drilled - 1950
 Direction - S 42 W (Mag)
 Location - Face of cliff Lat. 879', Dep. 3873', Elevation 6187'

From	To	Description	Length	Am	Ag	Cu
0.0'	19.5'	Garnetite with chalcopyrite				
		Sample No. 30 - 0.0' - 5.0'	5.0'	0.0005	0.65	1.00%
		" 31 - 5.0 - 10.0'	5.0	0.01	1.20	1.95
		" 32 - 10.0 - 16.0'	6.0	0.0005	0.50	0.65
		" 33 - 16.0 - 19.5'	3.5	tr.	0.10	1.40
		Average	19.5	0.0056	0.65	1.21

D.D.H. No. 4

D.D.H. No. 4

Dip - flat Drilled - 1950
 Direction - S 13 W (Mag)
 Location - Face of cliff Lat. 880', Dep. 3820', Elev. 6189'

From	To	Description	Length	Am	Ag	Cu
0.0	16.0'	Garnetite with chalcopyrite.				
		S- 1 0.0' - 9.0'	9.0'	0.0005	0.30	3.40% Cu.
		9.0' - 14.0'	5.0'	0.0005	0.95	2.50
		14.0 - 16.0'	2.0	tr.	0.15	1.10
		Average	16.0'	0.0004	0.77	3.14% Cu.

D.D.H. No. 5

D.D.H. No. 5

Dip - - 60° Drilled - 1950
 Direction - S 13 W (Mag)
 Location - Face of cliff Lat. 880', Dep. 3820', Elev. 6189'

From	To	Description	Length	Am	Ag	Cu
0.0'	21.0'	Garnetite with chalcopyrite.				
		S- 16 0.0' - 5.0'	5.0'	0.0005	0.15	1.25 %
		17 5.0 - 10.0'	5.0	0.0005	0.25	2.65
		18 10.0 - 15.0'	5.0	tr.	tr.	0.60
		19 15.0 - 21.0'	6.0	tr.	tr.	0.40
		Average	21.0	0.0001	0.09	1.19

ALCO COPPER MINES LTD.
Lucky Four Property
Miller, B. C.

DRILL HOLE RECORD (Surface)

D.D.H. No. 6 D.D.H. No. 6
 Drilled 1950
 Dip - ~~36.5~~
 Direction - S 47 W (Mag)
 Location - Face of cliff, Lat. 894°, Dep. 3773° Elev. 6190°

0.0 - 36.5° - Garnetite with chalcopyrite.				Au	Ag.	Cu. %
S-20	0.0 - 5.0'	5.0'	tr	tr	0.20	
21	5.0 - 10.0	5.0	tr	tr	0.50	
22	10.0 - 14.5	4.5	tr	tr	0.70	
23	14.5 - 19.0	4.5	tr	0.05	0.70	
24	19.0 - 24.5	5.5	tr	0.10	0.60	
25	24.5 - 30.0	5.5	tr	tr	1.00	
26	30.0 - 36.5	6.5	0.005	0.20	1.00	
Average			36.5	tr.	0.07	0.60

D.D.H. No. 7 D.D.H. No. 7
 Drilled - 1950
 Dip - Flat
 Direction - S 59 W (Mag)
 Location - Face of Cliff, Lat. 915°, Dep. 3765° Elev. 6187°

0.0 - 50.75° - Garnetite with chalcopyrite.				Core ground.		
S-7	0.0 - 6.5	6.5	tr.	tr.	0.70	% Cu
8	6.5 - 12.0	5.5	tr.	0.30	1.55	
9	12.0 - 16.0	4.0	0.005	0.30	0.50	
10	16.0 - 20.0	4.0	tr.	0.10	0.30	
11	20.0 - 25.5	5.5	tr.	0.15	0.95	
12	25.5 - 31.0	5.5	0.005	0.15	1.95	
13	31.0 - 36.0	5.0	0.005	0.80	1.25	
14	36.0 - 41.0	5.0	0.005	0.80	3.20	
15	41.0 - 46.0	5.0	0.005	0.80	1.10	
15	46.0 - 50.75	4.75	0.01	0.30		
Average			44.25	tr.	0.32	1.27

D.D.H. No. 15A D.D.H. No. 15A
 Drilled - 1950
 Dip - 50°
 Direction - S 45 W (Mag)
 Location - Face of cliff, Lat. 962°, Dep. 3748° Elev. 6144°

0.0 - 62.0° - Garnetite with chalcopyrite.						
0	0.0 - 5.0	5.0	0.01	0.80	0.30	% Cu
	5.0 - 10.0	5.0	0.015	0.60	1.00	
	10.0 - 15.0	5.0	0.005	0.60	0.90	
	15.0 - 20.0	5.0	0.005	0.95	1.30	
	20.0 - 25.0	5.0	0.005	0.30	0.40	
	25.0 - 30.0	5.0	tr.	0.10	0.35	
	30.0 - 35.0	5.0	0.005	0.25	0.65	
	35.0 - 40.0	5.0	0.01	0.35	0.20	
	40.0 - 45.0	5.0	0.015	0.40	0.70	
	45.0 - 50.0	5.0	0.01	0.40	0.95	
	50.0 - 55.0	5.0	0.01	0.10	0.25	
	55.0 - 62.0	7.0	tr.	0.20	0.80	
Average			62.0	0.007	0.42	0.66

RIOO COPPER MINES LTD.
Lucky Four Property
Kalilaw B.C.

DIAMOND DRILL RECORD (Surface)

D.D.H. No. 16

D.D.H. No. 16

Dip - Flat
 Direction - S 55 W (Mag)
 Location - Face of Cliff, Lat. 962° Dep. 3748', Elev. 6144'

Drilled - 1950

0.0 - 60.0 - Garnetite with chalcopyrite.		Au	Ag	Cu	
		Oz.	Oz.	%	
0.0 - 5.0	5.0	0.02	0.45	0.45	
5.0 - 10.0	5.0	0.005	0.01	0.65	
10.0 - 15.0	5.0	0.01	0.40	0.70	
15.0 - 20.0	5.0	0.005	0.60	0.90	
20.0 - 25.0	5.0	0.01	0.20	0.80	
25.0 - 30.0	5.0	0.01	0.20	0.80 (1.00)	
30.0 - 35.0	5.0	0.01	0.20	0.60	
35.0 - 40.0	5.0	0.015	0.25	0.60	
40.0 - 45.0	5.0	0.015	tr.	0.70	
45.0 - 50.0	5.0	0.015	0.20	0.70	
50.0 - 55.0	5.0	0.005	0.40	0.85	
55.0 - 60.0	5.0	0.005	0.30	0.40	
Average		60.0	0.01	0.27	0.66

D.D.H. 17

D.D.H. 17

Dip - -20°
 Direction - S 46 W (Mag)
 Location - Face of cliff, Lat. 983° Dep. 3712', Elev. 6124'

Drilled - 1950

0.0 - 58.0' - Garnetite with chalcopyrite.		Au	Ag	Cu	
		Oz.	Oz.	%	
0.0 - 5.0	5.0	tr.	0.20	0.35	
5.0 - 10.0	5.0	0.02	0.45	1.10	
10.0 - 15.0	5.0	0.005	0.80	1.60	
15.0 - 20.0	5.0	0.01	0.40	1.20	
20.0 - 25.0	5.0	tr.	0.30	0.50	
25.0 - 30.0	5.0	tr.	0.20	0.30	
30.0 - 34.0	4.0	tr.	0.30	0.50	
34.0 - 39.0	5.0	0.005	0.30	0.60	
39.0 - 44.0	5.0	tr.	tr.	0.25	
44.0 - 49.0	5.0	tr.	0.10	0.25	
49.0 - 54.0	5.0	tr.	0.25	0.30	
54.0 - 58.0	4.0	tr.	0.20	0.30	
Average		58.0	tr.	0.30	0.60

Note. Diamond drill holes No's 2, 3, 4, 5, 6, 7, 15A, 16, and 17 are drilled into the face of an almost vertical cliff of mineralized garnetite along a strike length of 200 feet. (Holes are numbered from east to west). The zone continues to the west beyond D.D.H. 17 with some disseminated mineralization. About 40 feet to the east of drill hole No. 2, the zone is intersected by a cross fault zone.

The weighted average of all assays from these 9 holes shows an average copper content of 0.92%, with 0.003 oz gold, and 0.30 oz. of silver.

At the foot of the cliff, to the north, there is a higher grade zone, partially exposed with a width of from four to 25 feet, along a length of 150 feet. This is largely oxidized but samples taken from the large boulders of fresh material assayed 2.7 % Cu.

Immediately to the east of this medium grade zone is the high grade "CW" orebody, which is exposed on the surface and is explored by a number of short drill holes No's 10, 11, 12, 13, 14, 15 and 19. These show from 8.0 to 22.9 % copper. Their width is around 20 feet and the length between 70 and 100 feet.

RIO COPPER MINES LTD.
 Insky Four Property
 Laidlaw B.C.

DIAMOND DRILL RECORD (Surface) Drilled in 1950

Diamond Drill holes No's 10, 11, 12, 13, 14 and 15, were drilled in different directions from the same approximate drill set-up on the high grade "O" orebody. The location of the set-up is:

Lat. 895' Long. 1839' Elev. 6170.'

D.D.H. No. 10 Dip -70° Direction N 55 W (Magnetic)

0.0 - 35.0'	-	High grade chalcopyrite ore much core lost	Au	Ag	Cu %
0.0 - 35.0	-		0.01	2.10	12.40
35.0 - 41.5	-	Sediments, with zoisite and quartz and sericite			
41.5 - 43.5	-	Garnetite with chalcopyrite (about 1% Cu)			
43.5 - 48.0	-	" "			
48.0 - 50.0	-	Sericite			
50.0 - 52.0	-	Garnetite & sericite rusty			
52.0 - 55.0	-	Sericite, qu and garnetite some Cp. (Split)			
55.0 - 57.0	-	Garnetite, qu and sericite some fair Cp.			
57.0 - 60.0	-	Qu. Diorite zoisite and sediments.			
60.0 - 65.0	-	Garnetite & zoisite, diss Cp. (split)			
65.0 - 67.0	-	Qu. Diorite and sediments. No. Min.			

D.D.H. No. 11 Dip - Direction S 25 W (Mag)

0.0 - 30.0	-	High grade chalcopyrite ore.	Au	Ag	Cu %
0.0 - 10.0	-	10.0'	Tr	13.1	12.7
10.0 - 15.0	-	5.0'	tr.	10.3	11.8
15.0 - 19.0	-	4.0'	tr.	17.4	18.4
19.0 - 24.0	-	5.0'	tr.	7.0	6.3
24.0 - 30.0	-	6.0'	tr.	6.8	8.3
Average		30.0	tr.	10.9	11.7

D.D.H. No. 12 Dip Direction N 15 E

0.0 - 5.0	-	High grade chalcopyrite ore.			
0.0 - 5.0	-	5.0'	0.005	19.1	21.9 % Cu

D.D.H. No. 13 Dip Direction N 19 W

0.0 - 14.0	-	High grade chalcopyrite ore			
0.0 - 14.0	-	14.0'	tr.	18.7	22.9 % Cu

D.D.H. No. 14 Dip Direction N 30 W (Mag)

0.0 - 27.5'	-	High grade chalcopyrite ore.			
0.0 - 27.5	-	27.5'	tr.	9.3	12.8 % Cu

D.D.H. No. 15 Dip Direction

0.0 - 12.0'	-	High grade chalcopyrite ore.			
0.0 - 12.0'	-	12.0'	0.04	21.3	20.5% Cu

RICO COPPER MINES LTD.
 Lucky Four Property
 Laidlaw B.C.

DIAMOND DRILL RECORD (Surface) Drilled in 1950

D.D.H. No. 18 - Not drilled.

D.D.H. No. 19 - This hole was drilled from above and into the high grade "C" orebody, near D.D.H. 10.

Dip - -42°
 Direction - S 50 E
 Location - "C" orebody, Lat. 900' , Dep. 3839, Elev. 6170'

0.0 - 65.0'	-	High grade chalcopyrite ore, no core recovery all sludge.	Au	Ag	Cu,
0.0 - 65.0	-	65.0'	0.06	11.6	14.8 %
65.0 -	-	Sediments.	H 48	V 44	

Diamond drill holes 20, 21, 22, 23 and 24 were drilled from one set up on the "A" orebody, east of the cross fault zone, the location being,

Lat. 768' , Dep. 3930' Elevation 6215'

D.D. H. No. 20 - Dip -60° , Direction

0.0 - 31.0	-	High grade chalcopyrite ore			
0.0 - 31.0	-	31.0 -	--	--	9.14% Cu.

D.D.H. No. 21, Dip -60° , Direction S 65 E (Mag)

0.0 - 43.0	-	High grade chalcopyrite ore.	Au oz.	Ag. oz.	
0.0 - 43.0	-	43.0	1.44	5.75	18.0 % Cu.

D.D.H. 22 - Sediments in footwall.

D.D.H. 23 - Dip -60° , Direction N 49 E (Mag)

0.0 - 15.0'	-	Disseminated chalcopyrite ore - ss.			3.28% Cu.
15.0 - 23.0	-	High grade " "	Au	Ag.	15.48% Cu.

108.0-112.0 - Diorite, altered, min Cp. fair ore.
 112.0-114.0 - " leached " " "
 118.0-120.0 - Garnetite, altered some Cp. fair ore.
 120.0-127.0 - Leached, some quartz crystals, siliceous some Cp.
 127.0-131.0 - Altered rock, some fair Cp.
 131.0-147.0 - small quartz crystals, occas. Cp.
 147.0-151.0 - Garnetite, altered diorite and quartz, some Cp. fair.

RIGGS COPPER MINES LTD.
 Lucky Four Property
 Laidlaw B.C.

DIAMOND DRILL RECORD, (Surface)

D.D.H. No. 24.

Drilled 1950.

Dip = -74°
 Direction = N 49 E (Mag)
 Location = "A" orebody, Lat. 766, Dep. 3930, Elev. 6215.

0.0 - 25.0	- High grade Cp ore	25.0'			15.95% Cu.	
25.0 - 30.0	Diss	" "	5.0		4.55%	
35.0	"	" "	5.0		3.62	
40.0	"	" "	5.0		1.35	
45.0	"	" "	5.0		2.01	
50.0	"	" "	5.0		7.22	
55.0	"	" "	5.0		2.62	
60.0	"	" "	5.0		5.56	
65.0	"	" "	5.0		8.84	
70.0	"	" "	5.0		6.80	
75.0	"	" "	5.0		3.08	
80.0	"	" "	5.0		3.60	
85.0	"	" "	5.0		4.40	
90.0	"	" "	5.0		2.90	
95.0	"	" "	5.0		4.30	
100.0	"	" "	5.0		4.06	
106.0	"	" "	6.0		5.60	
111.0	"	" "	5.0	0.04	1.40	3.50
116.0	"	" "	5.0	tr.	0.40	0.50
121.0	"	" "	5.0	0.005	0.40	0.80
127.0	"	" "	6.0	0.005	0.40	0.90
127.0 - 131.0	"	" "	4.0	0.02	1.20	2.50

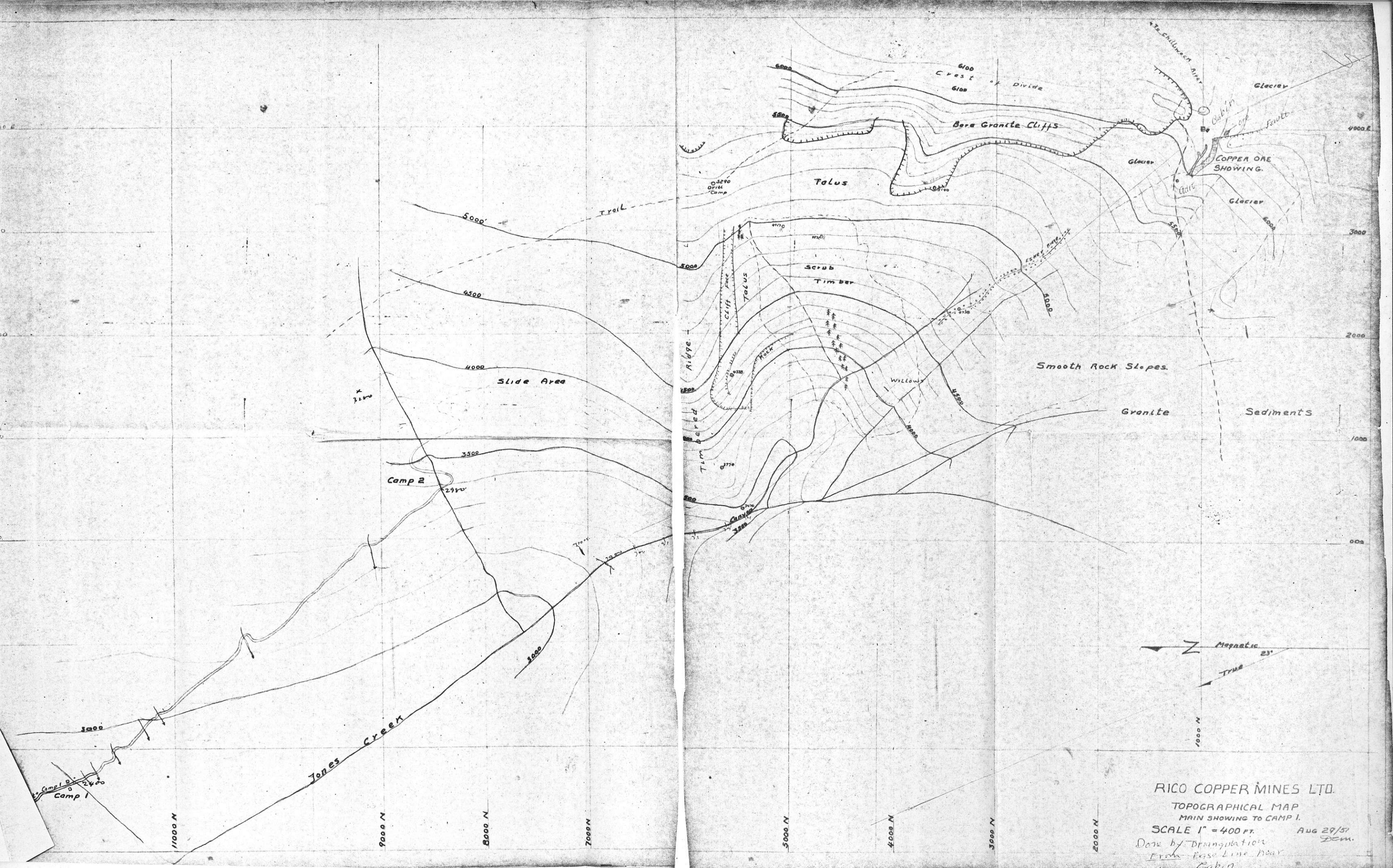
Average- 0.0 - 25.0 25.0 - 15.95 % Cu.

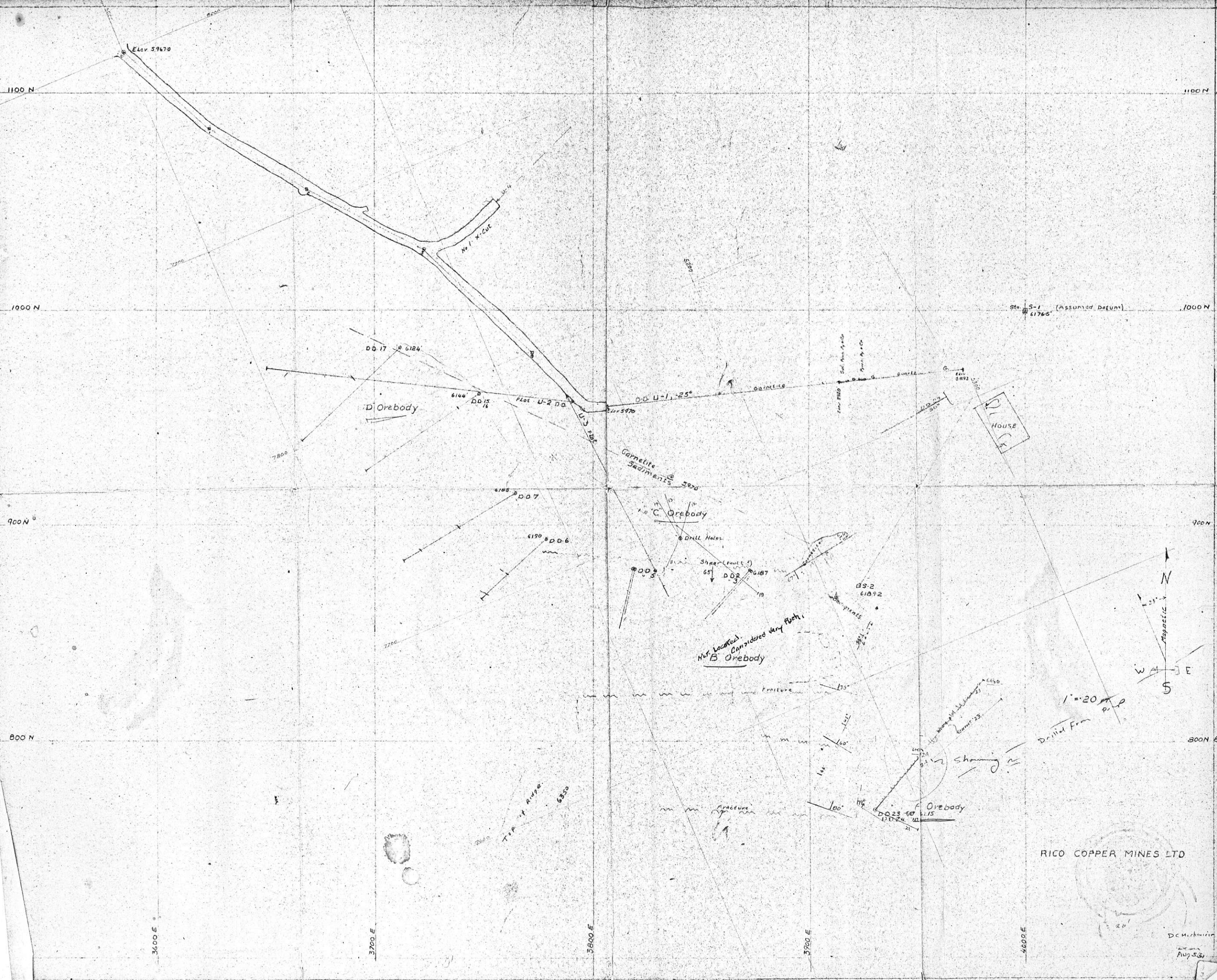
25.0 - 131.0 106.0' - 3.75 % Cu.

0.0 - 131.0 131.0 - 6.09 % Cu. uncut.

0.0 - 131.0 131.0' - 4.20 % Cu. Out grade.

Copied at Vancouver.
 Dec. 13, 1951
 BCL





Sta. S-1 (Assumed Datum)
61765'

HOUSE

Carnelite Sediments
Orebody C

Not Located.
Considered Very Rich.
Orebody B

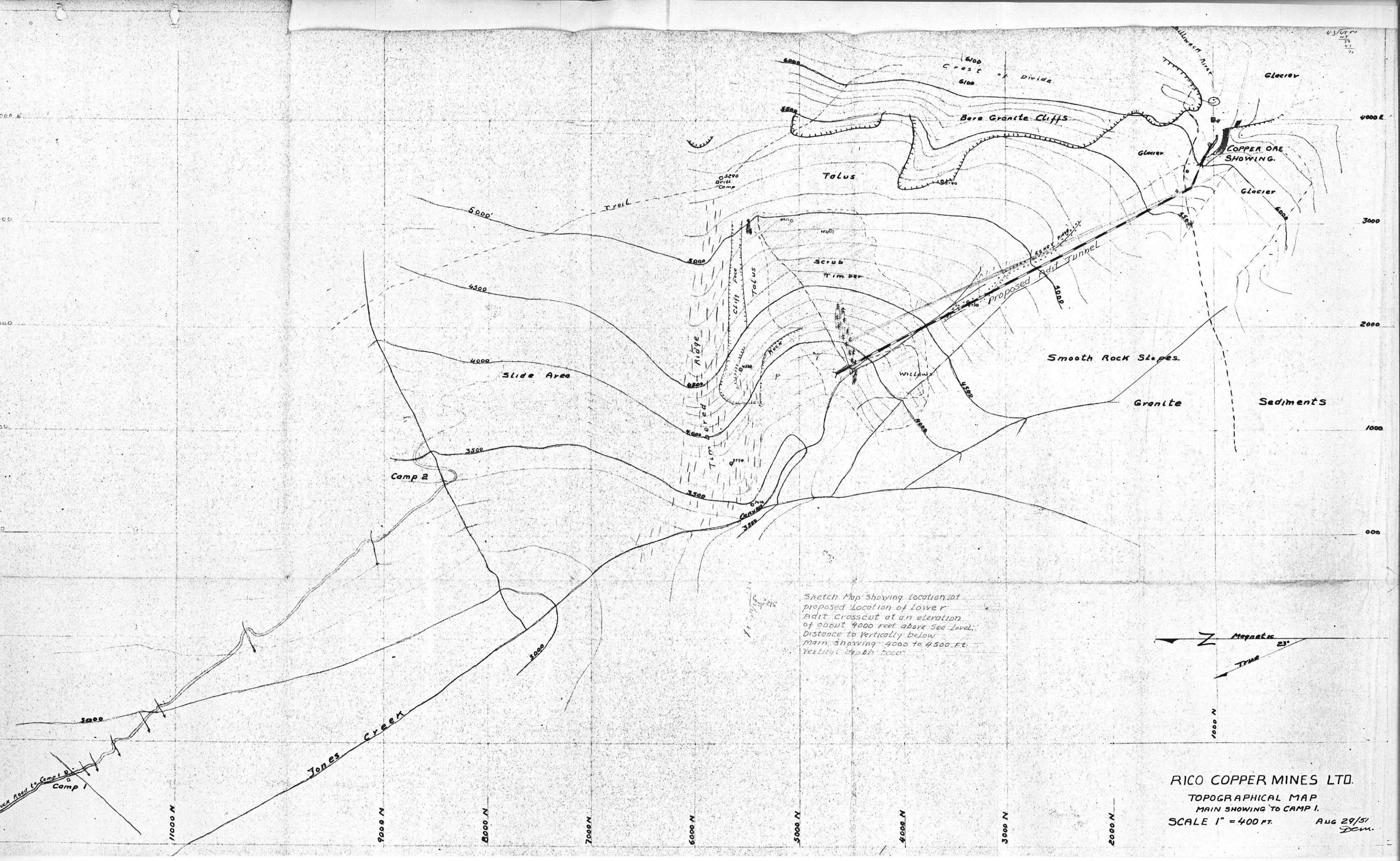
DS-2
61892

Orebody F

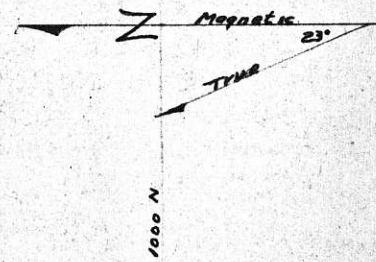
1" = 20'
Drilled from P.P.

RICO COPPER MINES LTD

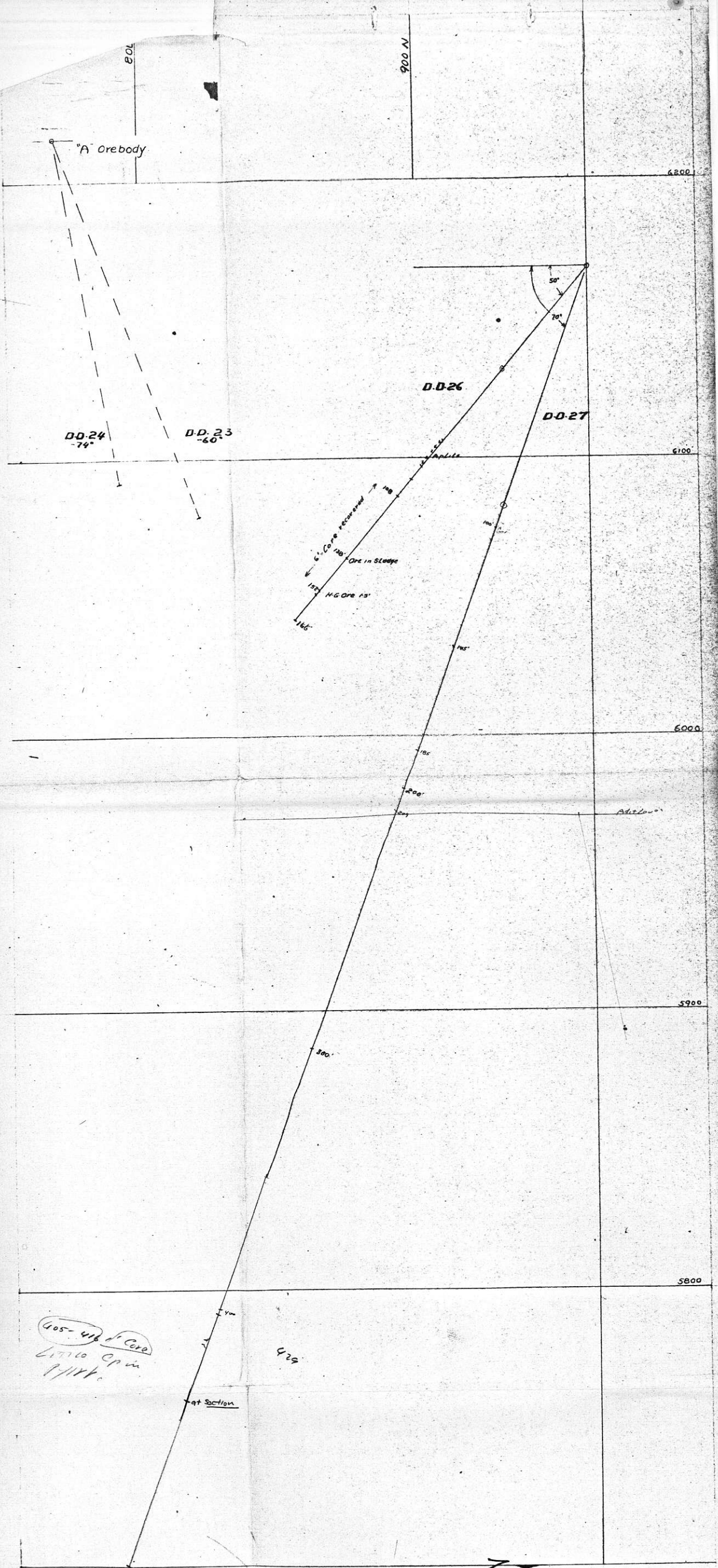
D. McArthur
Aug 5, 56



Sketch Map Showing location of proposed location of lower adit crosscut at an elevation of about 4000 feet above sea level. Distance to vertically below main showing 4000 to 4500 Ft. Vertical depth 2000'



RICO COPPER MINES LTD.
 TOPOGRAPHICAL MAP
 MAIN SHOWING TO CAMP I.
 SCALE 1" = 400 FT. AUG 29/51
 J.C.M.



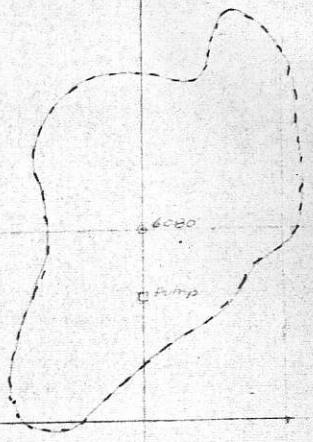
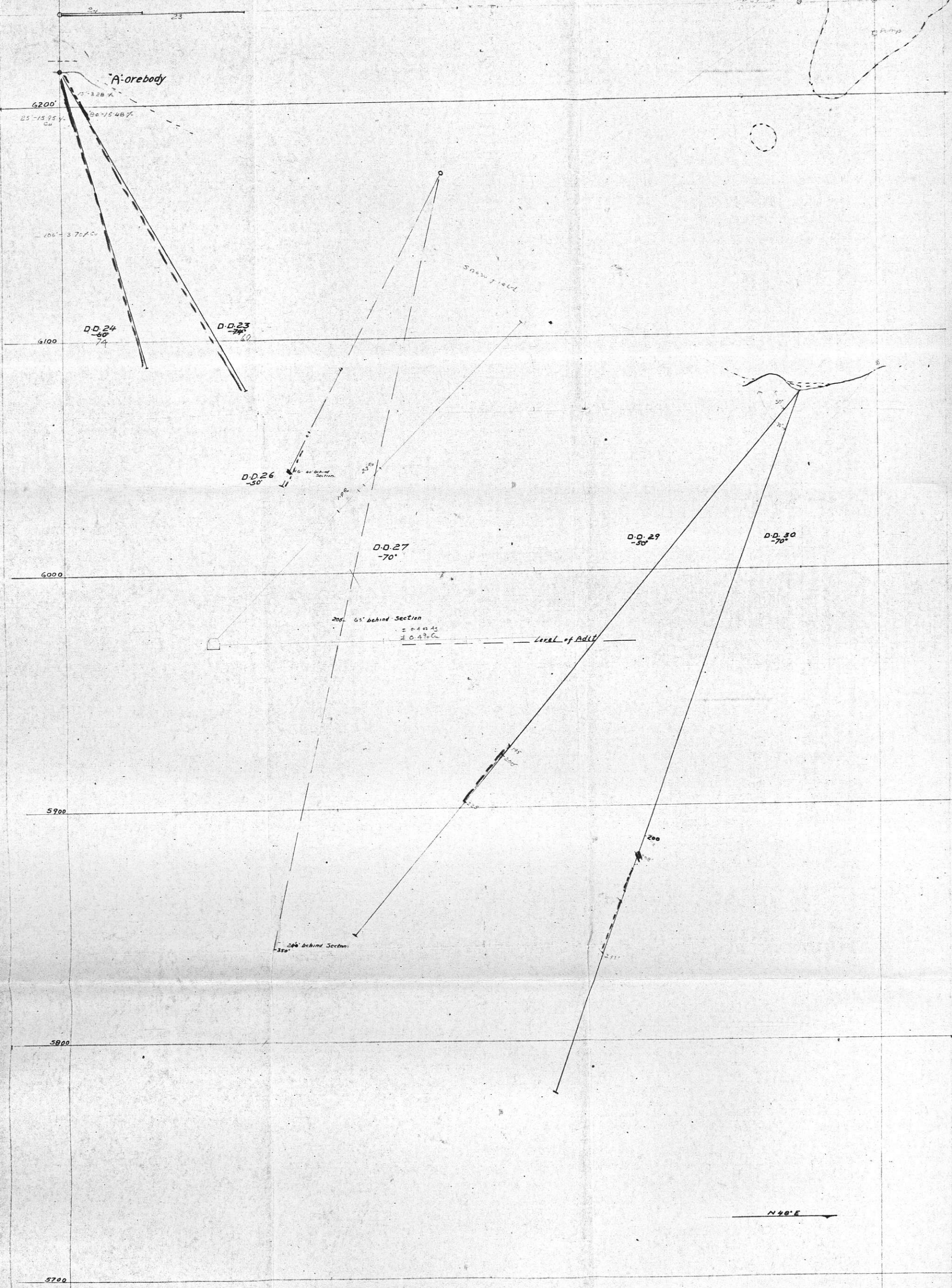
405-416 ft Core
 Little Ore in
 1/4 hr.

at section

425

RICO COPPER MINES LTD
 SECTION THROUGH
 D.D. HOLES 26 & 27
 SCALE 1" = 20 FT

Dexter 5496 L



RICO COPPER MINES LTD
SECTION @ N 48° E
THROUGH D-D'S 23 & 24 TO PUMP STA
SCALE 1" = 20 FT.

Tom