

~~1173~~

PROPERTY FILE

MT CHEANA, Ore.

92.H

681225

#65 MIN INV
"Cu"

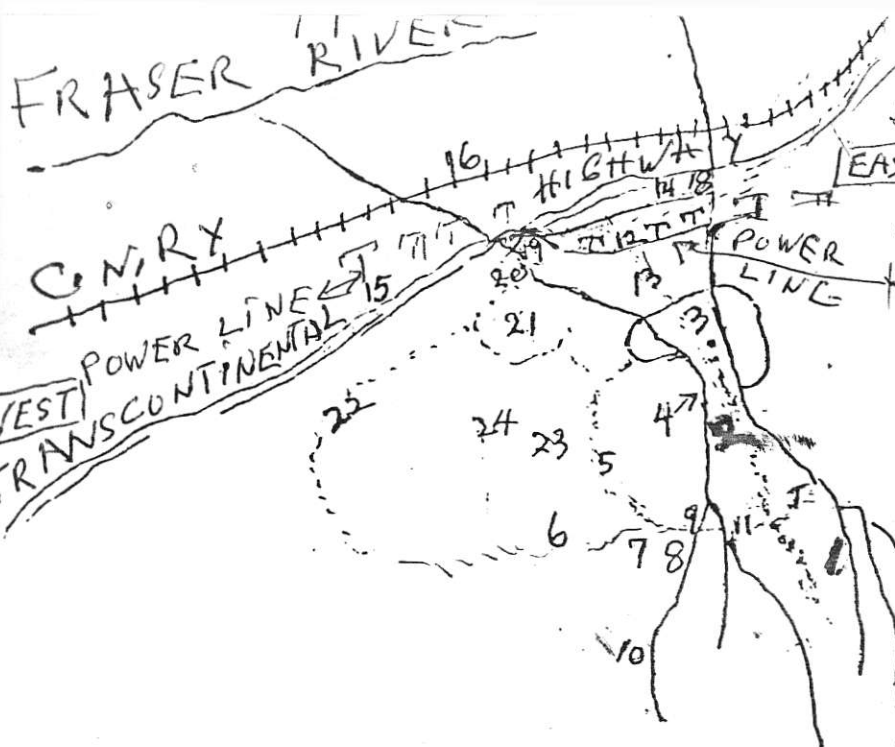
92H-4



BC7056-167

BC7056-167





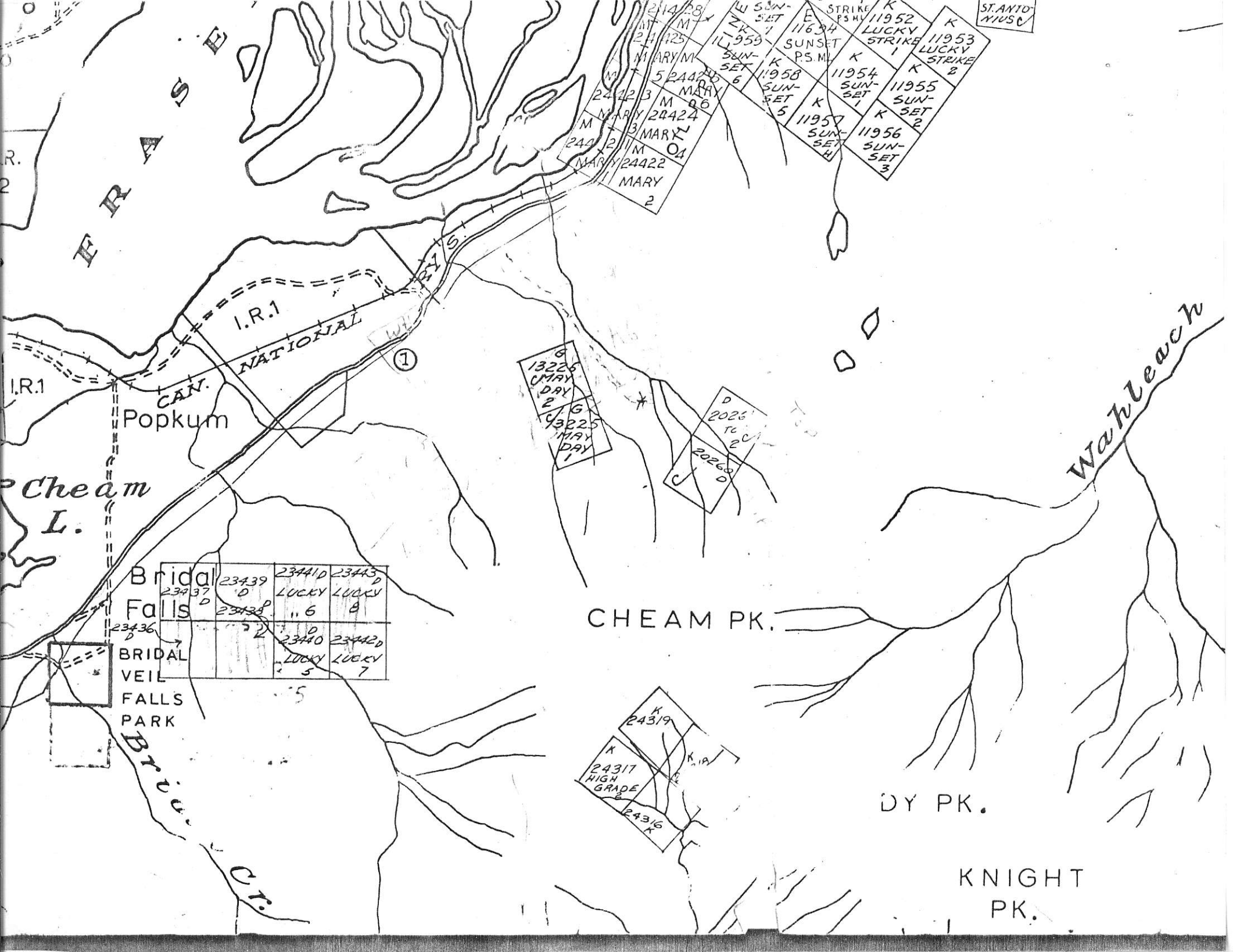
never had chance to complete below. About 30 yds above where hogback starts, close to where two creeks almost meet, it is very steep. Limestone cliff can be seen below. Require a rope ladder to get down to examine creek bed. It is on same strike and dips as Blacksmith's main deposit above.

Copy
Copy

LEGEND.

1. LIMESTONE BLUFF OFF HOGBACK. BLACKSMITH'S MAIN DEPOSIT.
- 2.....HOGBACK. 3. SEVEN ACRE FLAT LOCATION.
4. POINT OF CLOSEST PROXIMITY OF TWO CREEKS, ON THE HOGBACK.
5. OLD LOGGING ROAD WHICH LEADS TO LIMESTONE BLUFF; (BUT YOU WILL GO STRAIGHT UP HOGBACK.) LIMESTONE-GRANITE CONTACT DEPOSIT WILL BE STRAIGHT STRAIGHT SOUTH, SLIGHTLY TO THE LEFT WHEN YOU GET HIGHER.
6. ROAD LEADING AWAY TO WEST. 7. SLIDE ON OLD LOGGING ROAD; WOULD NOW PROBABLY BE MORE DIFFICULT TO USE. 8. SLIDE WHERE ROAD TURNS EAST. MOST OF THESE ROADS NOW OUT OF REPAIR. 9. CROSSING ABOVE CREEK TO GET ACROSS TO No 1 LIMESTONE-GRANITE CONTACT BLUFF.
10. APPROXIMATE POSITION OF SOME LIMESTONE CAVES AS SEEN FROM BELOW AT FIRST CREEK CROSSED, WHEN TURNING BACK EAST. IS THE LOCATION OF TWO PREVIOUS GOLD CLAIMS. NEVER HAD TIME TO GO UP TO EXAMINE.
11. BLOCKS OF GRANODIORITE NOW ALMOST BLOCKING ROAD. 12. APPROXIMATE POSITION OF POWER LINE CUT. 13. OLD LOGGING ROAD LEADING UP TO SEVEN ACRE FLAT. (1/2 TO 3/4 OF ONE MILE UP TO THIS, FROM EDGE OF POWERLINE CUT.)
14. PRESENT DAY LOGGING ROAD IN USE. 15. TRANSCANADA HIGHWAY. 16. CANADIAN NATIONAL RAILWAY. 17. FRASER RIVER. 18. EAST CAMPSITE. 19. ROAD LEADING OFF TO BRIDGE WHICH CROSSES WEST CREEK.
20. WEST CAMPSITE, ALONGSIDE ONE OLD LOGGING ROAD. 21. CALCITE AND QUARTZ VEINS A FEW YARDS UP FROM CAMPSITE, ALONGSIDE ONE OLD LOGGING ROAD.
22. COURSE OF A FURTHER OLD LOGGING ROAD.
23. PLACE ALONG SLOPE WHERE MARBLE WAS PICKED UP. PLENTY OF IT THERE. A LAPIDARY PRONOUNCED IT AS A VERY GOOD GRADE OF MARBLE FOR POLISHING.
24. APPROXIMATE POSITION OF THE STREWN BLOCKS OF BROKEN OFF HORNBLENDE.

Before I only had a description of where Blacksmith's deposit was located, from an associate who had only been there one day June some years before. This associate is a good shaman. He was out on his location, and consequently I was 3/4 of a mile too far east. East Hour Glass Creek is arenaceous Quartzite hills close to some gold claims.



FRASER

I.R.1

CAN. NATIONAL

Popkum

Cheam L.

Bridal Falls

BRIDAL VEIL FALLS PARK

23439 D	23441D LUCKY	23443 LUCKY
23437 D	23438 6	8
23436 D	23440 LUCKY	23442D LUCKY
	5	7

CHEAM PK.

DY PK.

KNIGHT PK.

2414/28 M
24123 M
MARY M
5 24420 M
24423 M
MARY 24424
24423 M
MARY L
24422 M
MARY 24422
MARY 2

11953 SUN-SET 1
11954 SUN-SET 1
11955 SUN-SET 2
11956 SUN-SET 3
11957 SUN-SET 4
11958 SUN-SET 5
11959 SUN-SET 6
11634 SUNSET P.S.M.
E STRIKE P.S.M.V
K LUCKY STRIKE 1
K LUCKY STRIKE 2
K

ST. ANTO NIUSC

13225
MAY DAY 2
13225
MAY DAY 1

2026
2026
2026

24319
24317 HIGH GRADE
24316

WE HARVEY.

SEPT, 10

ENG. - Genjac driller

→ Saw showing in Sept 1970

- MAGNETIC TACUS.

- Copper, gold, silver

- Gold & silver all burned out.

- Dug a pit or tunnel

Dawn Dawn
of Arcanum Sept 12th 1980

AFR

I checked on those
Int. Chem Claims. This map
see place marked. Claims 585 and 586
are up; but they have until
Oct 13th (30 days to redeem claim)
If they do not, they will be open.
You can check by phone on
New Westminster office on Oct 13th.

One paper I did not have enclosed
was of a location near where West
Camp was located. Near there was a
considerable deposit of Calcite
crystals.

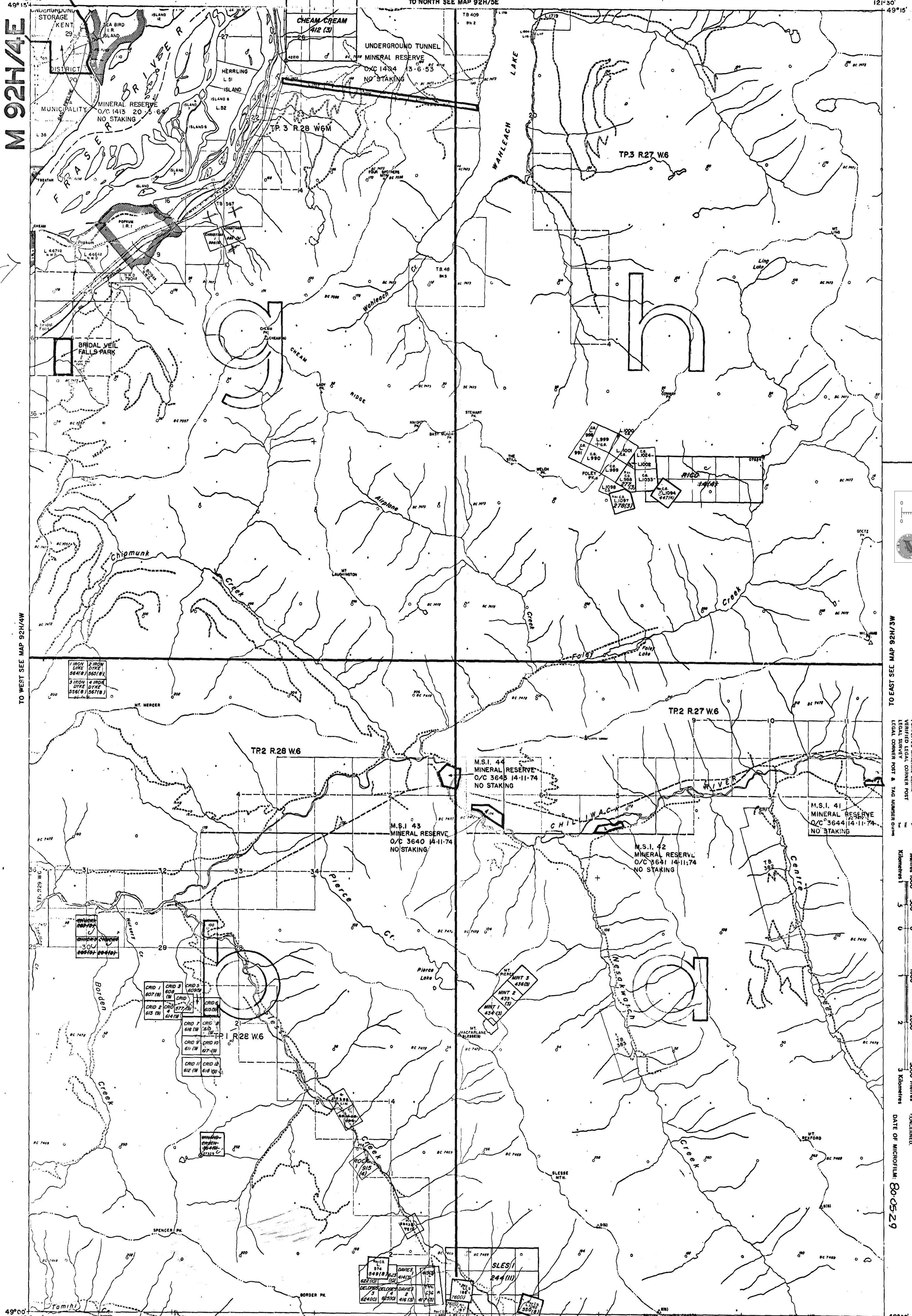
See \Rightarrow and + + +
marked on map.

WEST.

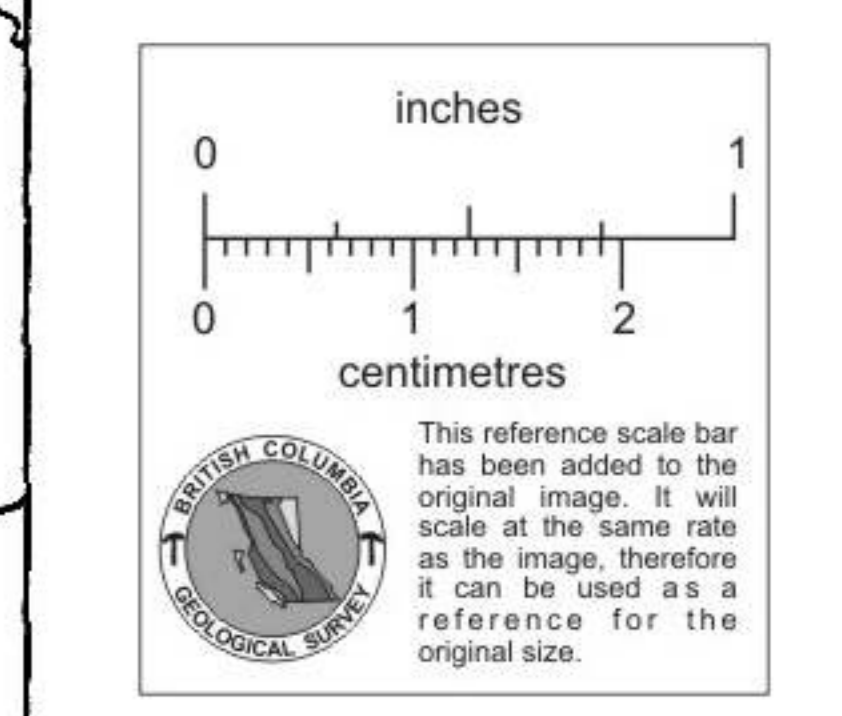
M 92H/4E

TO NORTH SEE MAP 92H/5E

121° 30' 49" 15'



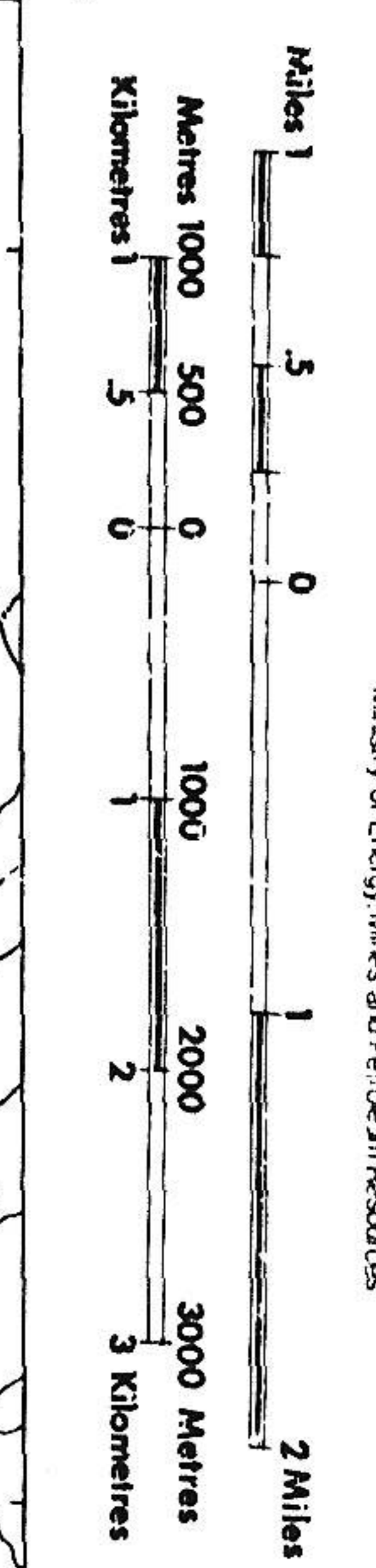
TO WEST SEE MAP 92H/4W



TO EAST SEE MAP 92H/4F

LEGEND

- CROWN-GRANTED MINERAL CLAIM
- REVERTED C.G. MINERAL CLAIM
- FORFEITED MINERAL CLAIM
- LEGAL CORNER POST
- LEGAL CORNER POST & TAG NUMBER GIVEN



UNLESS OTHERWISE STATED, THE DATA PORTION OF A LEGAL CORNER POST IS BASED ON THE L.C. SURVEY SECTION FOR FILE THEREIN. INFORMATION APPLICABLE TO THE U.S. SIDE OF THE DIVISION CONCERNED.

DATE OF MICROFILM: 80-05-29

NEW WESTMINSTER MINING DIVISION

- Mining Division Boundary
- Indian Reservation
- Mineral and Fluvial Reserve
- Ecological Reserve
- Bulk Road
- Crown Granted
- Reverted C.G. Mineral Claim
- Forfeited Mineral Claim
- Verified Legal Corner Post
- Unsurveyed Area

MINERAL TITLES REFERENCE MAP 92H/4E
 DEPARTMENT OF MINES AND PETROLEUM RESOURCES VICTORIA, B.C.

M 9