

Nov 16/90

681214

92H/16

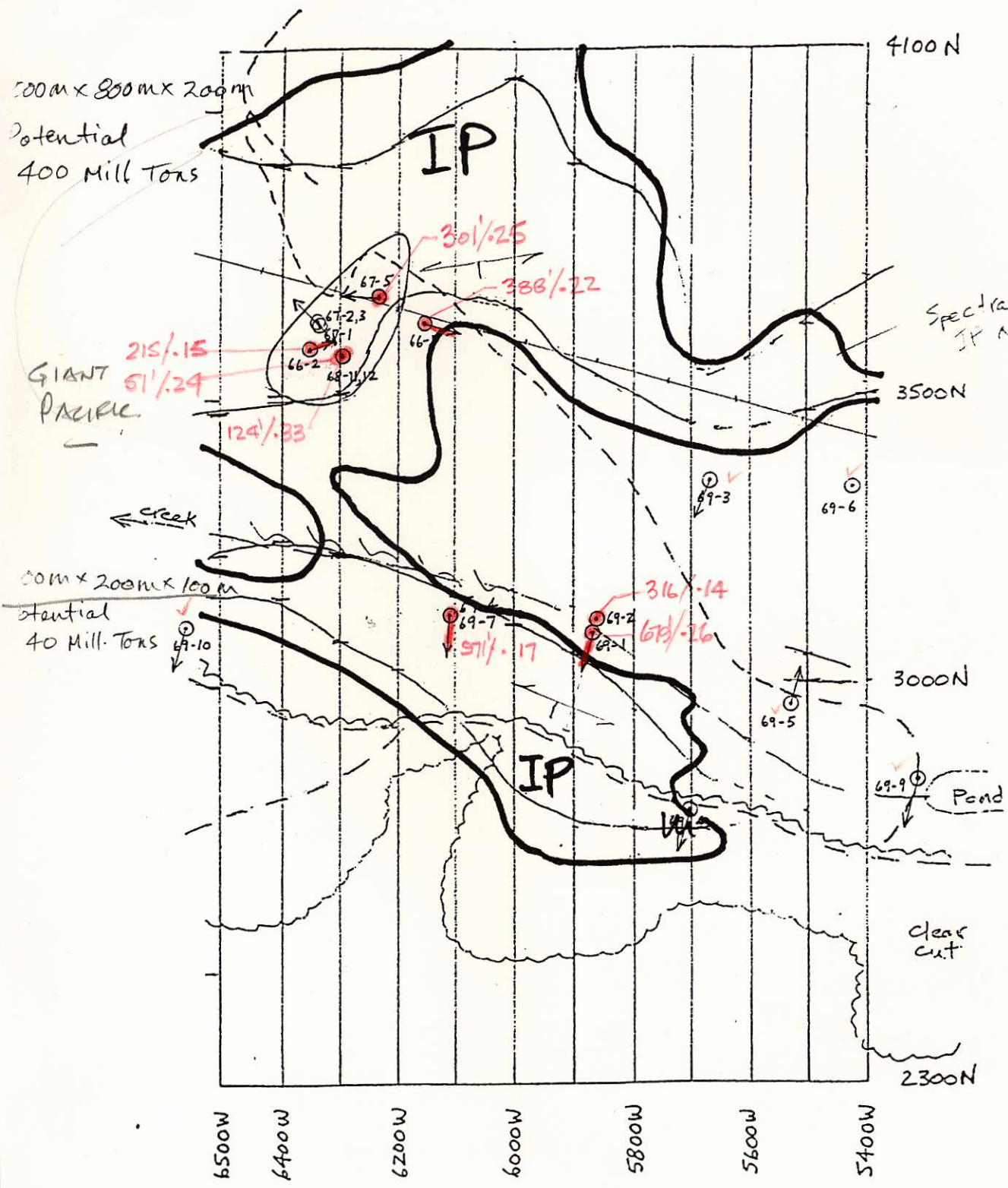
DILL - PRIMER SOUTH SHOWING
DIAMOND DRILL HOLE SUMMARY.

Hole No.	Dip	Length(Ft)	Orb.(Ft)	% Cu	Length(Ft)
66-1	45	418	30	.22	388
66-2	38	410	19	.15	265
67-1	60	200	6	Not available	
67-2	60	180	5	" "	
67-3	90	126	6	" "	
67-4	90	620	16	.24	394
67-5	45	309	6	.23	301
68-11	90	52	1	.24	51
68-12	90	128	4	.33	124
69-1	45	813	132	.26(.40)	679 (130)
69-2	90	403	84	.14	316
69-3	54	246	165	.05	81
69-4	54	343	43	.02	300
69-5	70	813	83	.07	729
69-6	90	598	55	.05	543
69-7	54	1001	30	.17	971
69-9	43	375	30	Low values	
69-10	45	573	41	.05	532



Declination
2 1/2° E

1000 m.



500m x 850m x 200m
Potential
400 Mill Tons

GIANT
PACIFIC

Spectral
IP Anomaly

creek

500m x 200m x 100m
Potential
40 Mill. Tons

Fracs
Dip
30° - 75°
South?

Pond

clear
cut

6500W 6400W 6200W 6000W 5800W 5600W 5400W

FAIRFIELD MINERALS LTD.
DILL PROPERTY
DRILL PLAN
1:10,000
Nov. 1990

--- Road (Approx.)
~ Edge of clear cut
About 3 km lines in c/c.

Primer North 100' / 500' / 50' Au
 Primer South
 trench 7A

Declination
 2 1/2° E

GIANT PACIFIC

BRICAN

creek

4100 N

3500 N

3000 N

Pond

2300 N

6500 W

6400 W

6200 W

6000 W

5800 W

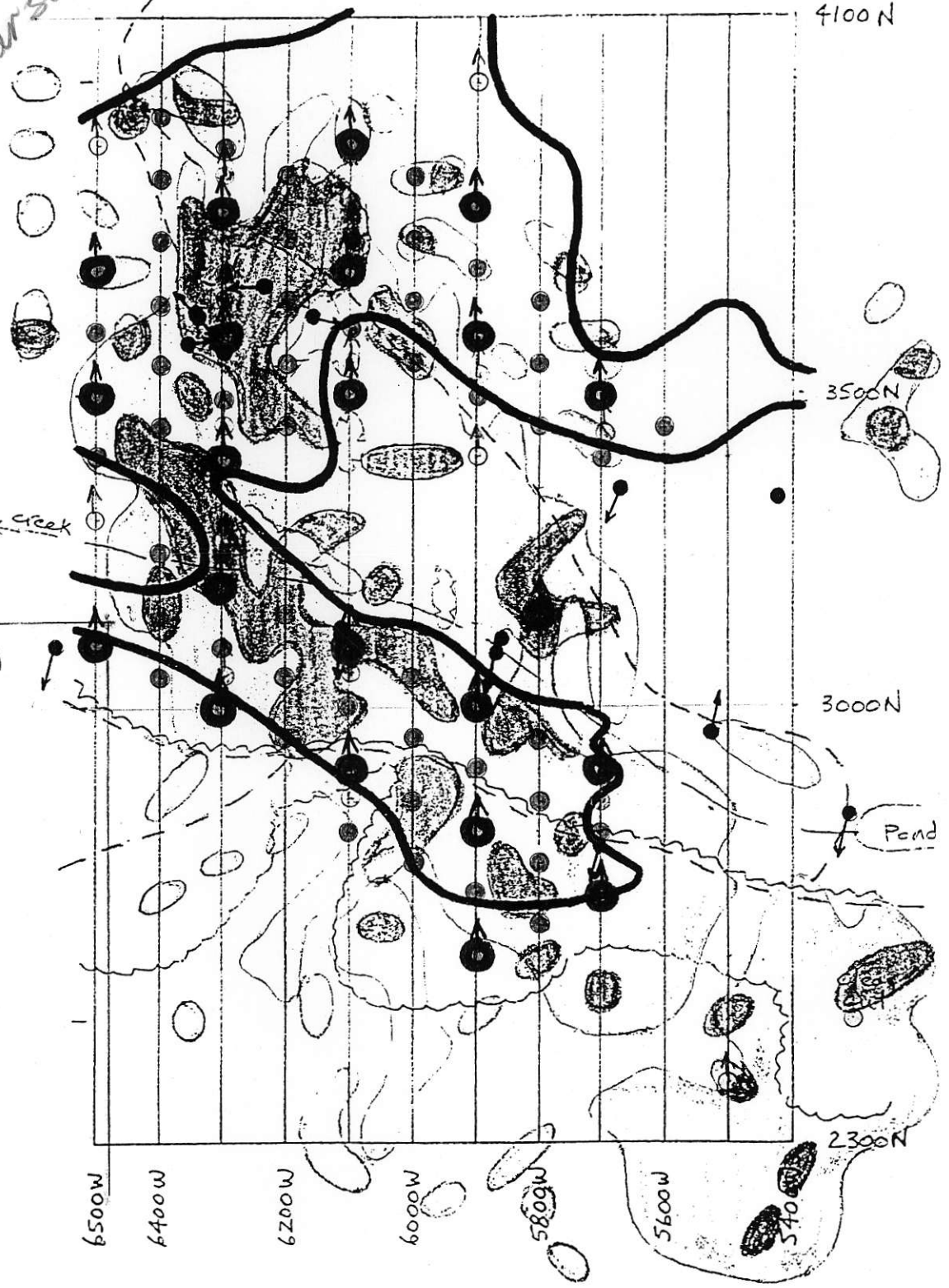
5600 W

5400 W

--- Road (Approx.)
 ~~~ Edge of clear cut

— IP Chargeability  
 - - - Au Grade anomaly  
 - - - Cu Grade anomaly

FAIRFIELD MINERALS LTD.  
 DILL PROPERTY  
 COMPILATION  
 1:10,000  
 Nov. 1990



| Deposit     | Reserve (Mill.T.) | % Cu | oz/t Au | % Mo  | Strip Ratio | Surface Area    |
|-------------|-------------------|------|---------|-------|-------------|-----------------|
| Milligan    | 440               | .20  | .014    |       | 1.2/1       |                 |
| Highland V. | 770               | .40  | -       | ~.015 |             |                 |
| Cu Mtn.     | 120+              | .435 | .002    |       |             |                 |
| Island Cu.  | 270               | .45  | .007    | .017  |             |                 |
| Brenda      | 160               | .17  | -       | .035  |             | 720m<br>x 360m  |
| Gibraltar   | 330               | .315 | -       | .009  | 1/1         |                 |
| Afton       | 20                | .7   | .014    |       |             |                 |
| Ajax        | 25                | .46  | .010    |       |             |                 |
| Mt. Polley  | 55                | .38  | .016    |       | 1.7/1       | 1500m<br>x 460m |
| Hushamu     | 300               | .32  | .012    |       | 1.5/1       |                 |
| Bell Cu     | 40                | .50  | .017    |       |             |                 |