

September 15th 1958.

PRELIMINARY REPORT ON "VIC GROUP" PROPERTY

TASEKO LAKE.

A Prospector and helper spent three weeks on this property, from July 4th to July 27th, 1958, examining the showings on the four Mineral Claims, Vic No. 1, 2, 3, and No. 4, staked in July 1954.

Access to the claims was made by truck for 130 miles from Williams Lake, by boat across Taseko Lake, and by pack horse for 15 miles to base camp situated at 6500 foot elevation.

The claims cover the bare precipitous rocky ground rising immediately west of the Taseko River at 4,400 to 7,900 feet elevation, and one mile north of Taseko Lake.

Heavy winds had blown down a large stand of spruce, which made it too difficult to transport supplies to the lower side of the claims.

The prospector examined the showings above the 7,500 foot elevation, stripping six vein occurrences. Several attempts were made to prospect the vein outcrops below the 7,500 foot elevation, but melting snow was causing continuous rock slides down the ravines where the veins occurred, making it too hazardous to prospect.

On July 25, 26, and 27th, I mapped and sampled the vein exposures above the 7,500 foot elevation, sampled and mapped the two adits at 5,500 and 5,800 foot elevations, and re-staked the ground covered by the four mineral claims, Vic Nos. 1 to 4.

A total of 25 samples were taken on five veins above the 7,500 foot elevation. The highest grade section found on these five veins was a sixty foot section assaying Au. 0.245 over an average width of 0.7 feet. Little or no fresh mineral was seen on these veins, although the prospectors had dug several pits up to 10 feet deep on these veins.

The two adits have exposed the vein for a total of 320 feet, and an average width of 1.9 feet. The highest grade sample obtained in these adits was Au. 0.02, Ag. 0.15 over a sample width of 3.0 feet. No prospecting or sampling was carried out on the surface near the adits, as the veins occur in ravines down which loose rock was continuously cascading. In one of the ravines above the upper adit previous samples have been obtained, as follows:

Preliminary Report on the "Vic Group" Property - 2.

<u>Width</u>	<u>Au. oz per ton</u>
12 inches	0.68
12 inches	1.10
Sulfide Specimen	9.34
6 inches	5.52
10 inches	0.51

It is the vein directly below these previous surface samples which was opened up by the two adits.

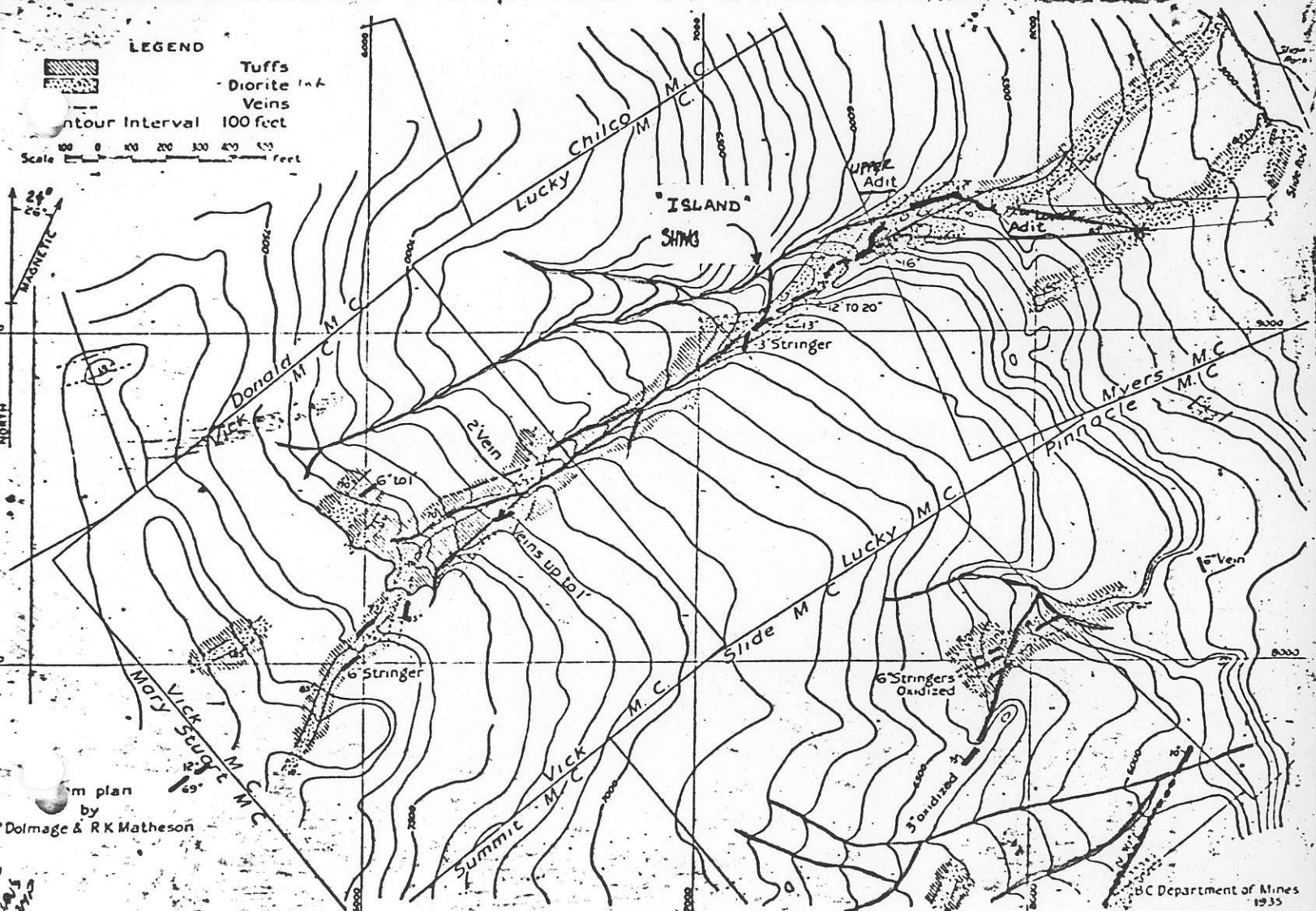
CONCLUSIONS.

upper
? No ore grade material was found in the veins on the "Vic" Claims.

Underground development is the most practical method of exploring these veins. The results of surface and underground sampling do not warrant the large expenditure required for underground exploration.

Respectfully submitted,

N. G. Cornish



Vick. Sketch-plan showing Vein-exposures and Geology.