



N.E. (Norm) Green, P.Eng.
Area Manager

Aurora Quarrying Limited
531 Newcroft Place
West Vancouver, B.C. V7T 1W9

Tel: (604) 926-1716
Fax: (604) 926-2017

MINING CONTRACTORS AND ENGINEERS

FACSIMILE MESSAGE FORM -

TO: CORDILLERAN EMB DATE: 11-03-94

LOCATION: VANCOUVER

ATTENTION: PEEBY/JEFF/JOHN

FAX NUMBER: 669-3308

FROM: NORM GREEN

TOTAL PGS / MESSAGE: 3

(INCL. THIS PAGE)

FOLLOWING ARE THE LAYOUTS FOR DEVELOPMENT AND THE LONGHOLE RING DRILLING REQUIRED.

I INTEND TO MAKE A MORE DETAILED LAYOUT FOR THE LONGHOLE DRILLING. THE LAYOUT WILL BE USED BY THE DRILLER WHEN DOING THE DRILLING. IT WILL ALSO BE UTILIZED BY THE LONGHOLE BLASTER WHEN LOADING & BLASTING THE RINGS.

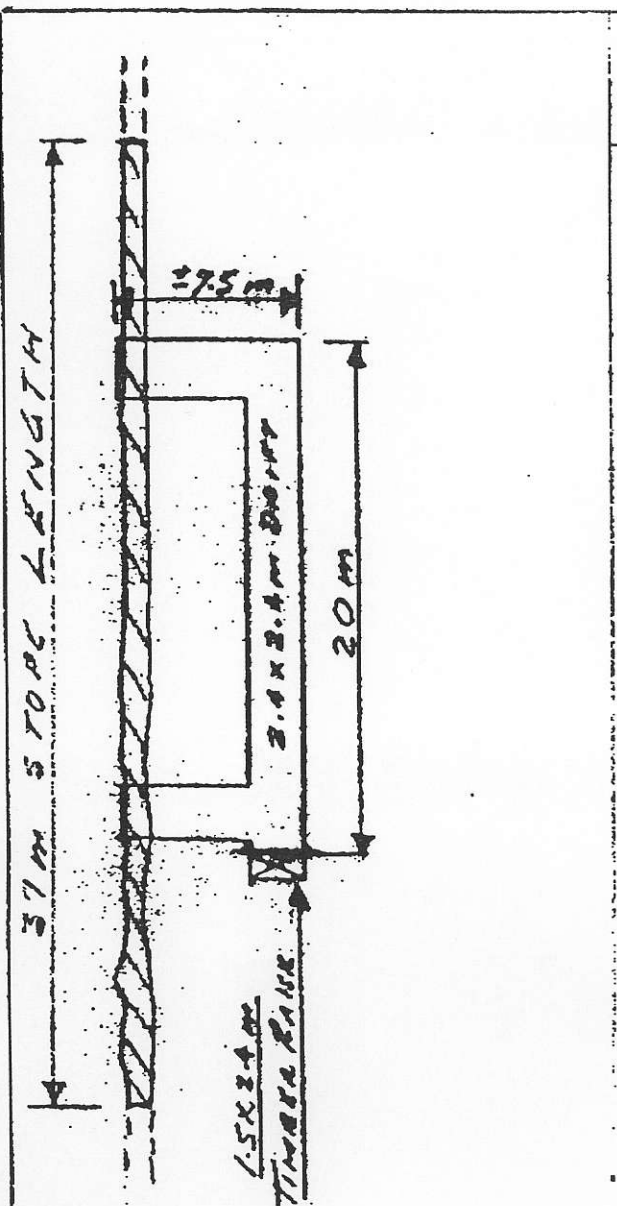
I UNDERSTAND YOU WILL BE FAXING THESE ON TO BRAD TABLE IN MERRITT.

WE WILL TAKE COPIES OF EVERYTHING TO THE SITE WHEN WE GO ON NOV. 8TH.

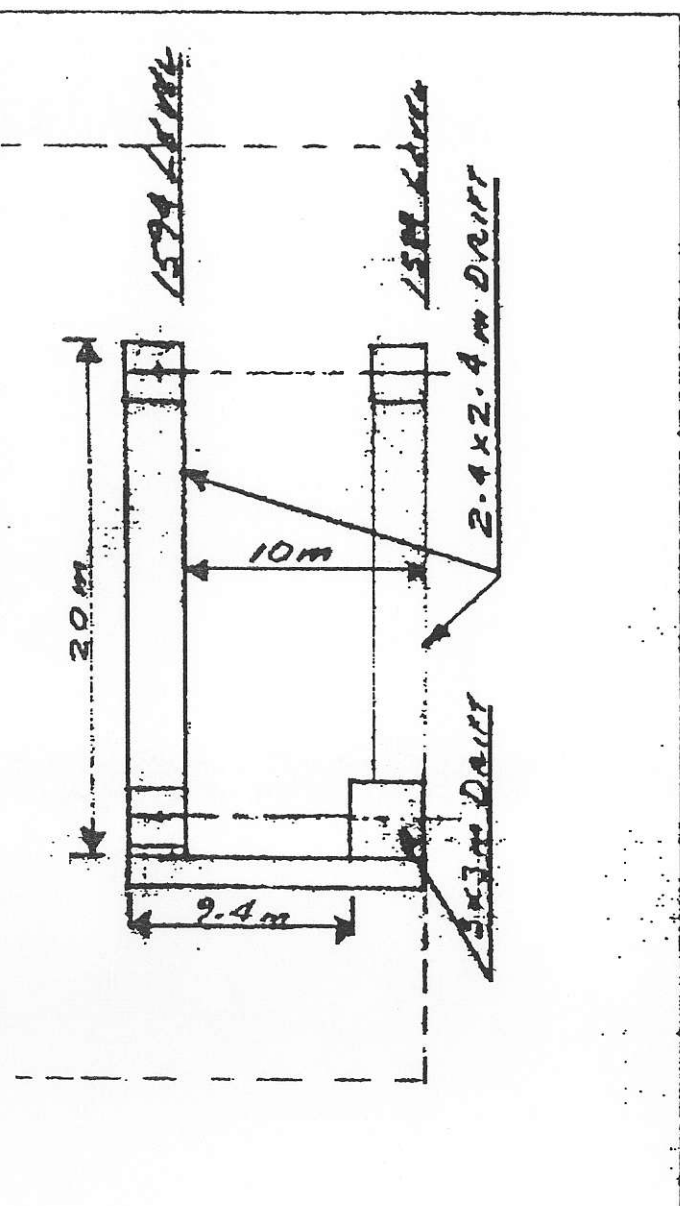
REGARDS,

10:30 PM. P.S. -

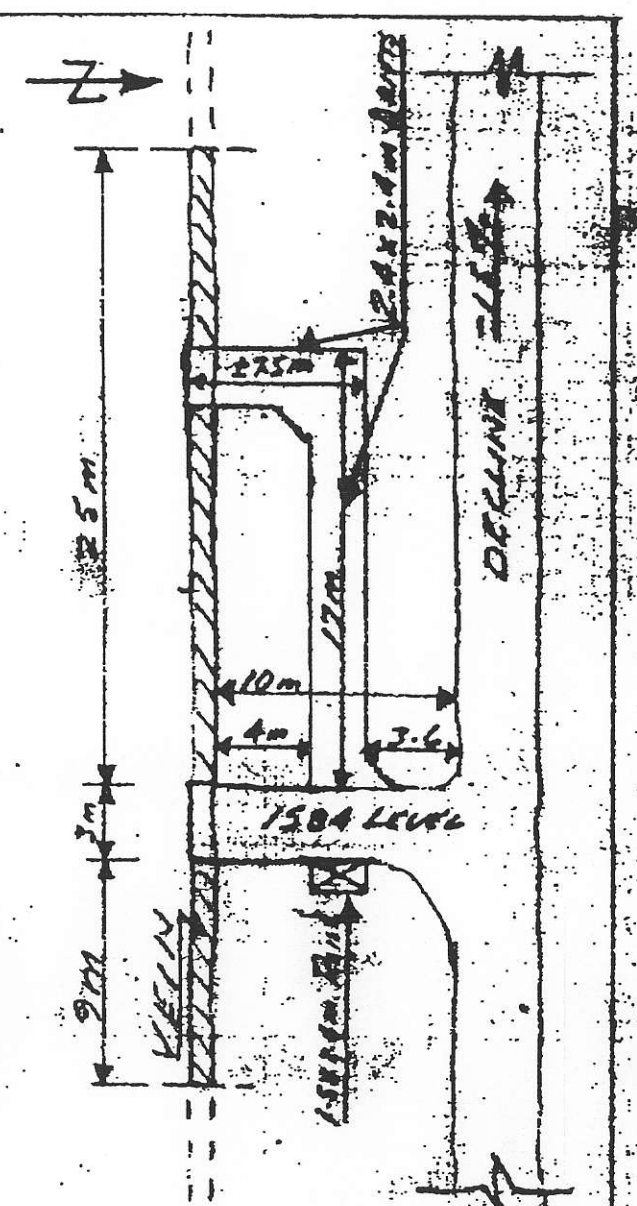
MY PHONE & FAX APPEAR TO BE WORKING.



1594 LEVEL PLAN



SECTION



1584 LEVEL PLAN

LONGHOLE SHRINKAGE

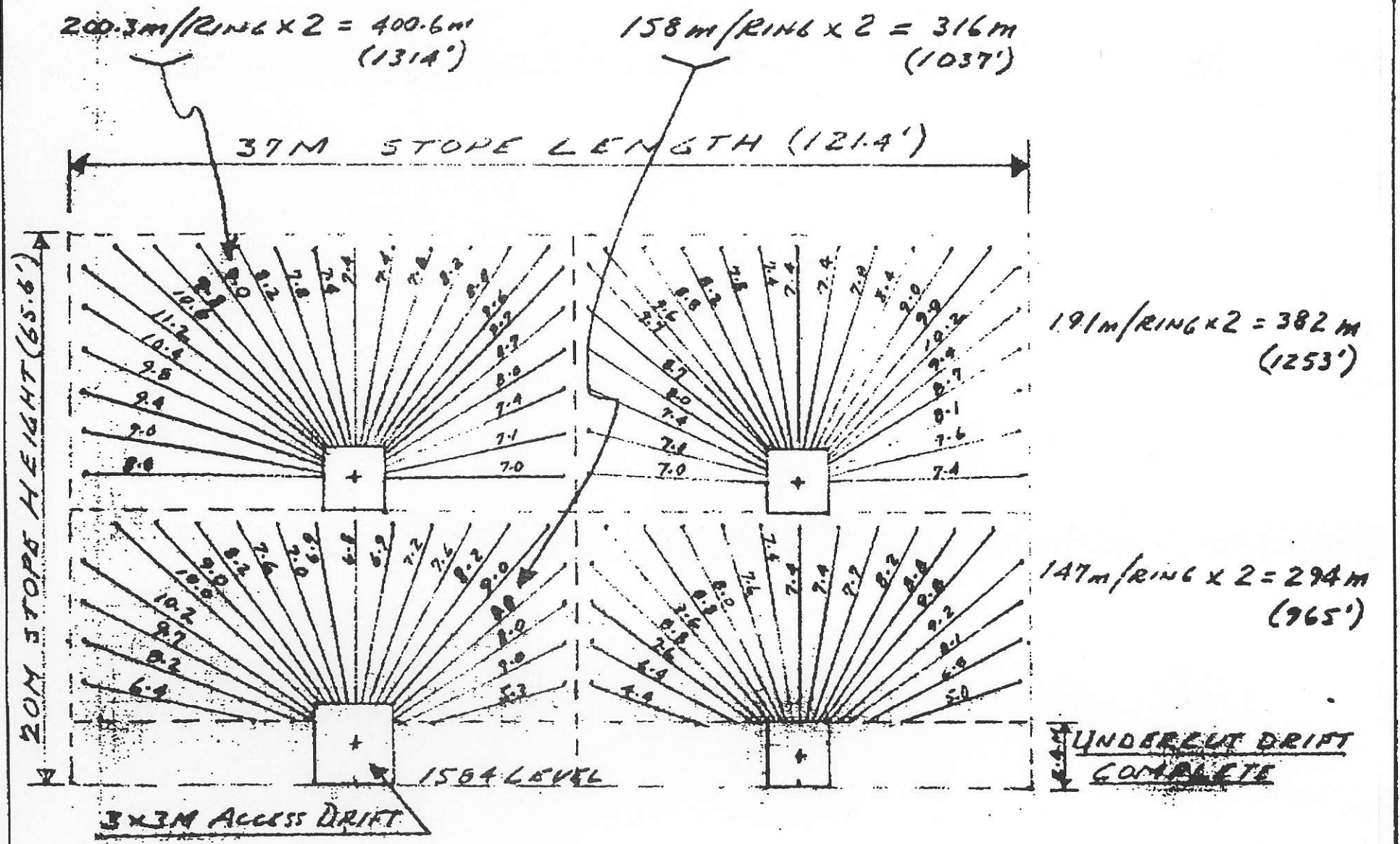
1584 STOPC TEST

SCALE: 1:300

DATE: 11-03-94

DRAWN BY: N.P.C.

1584-L

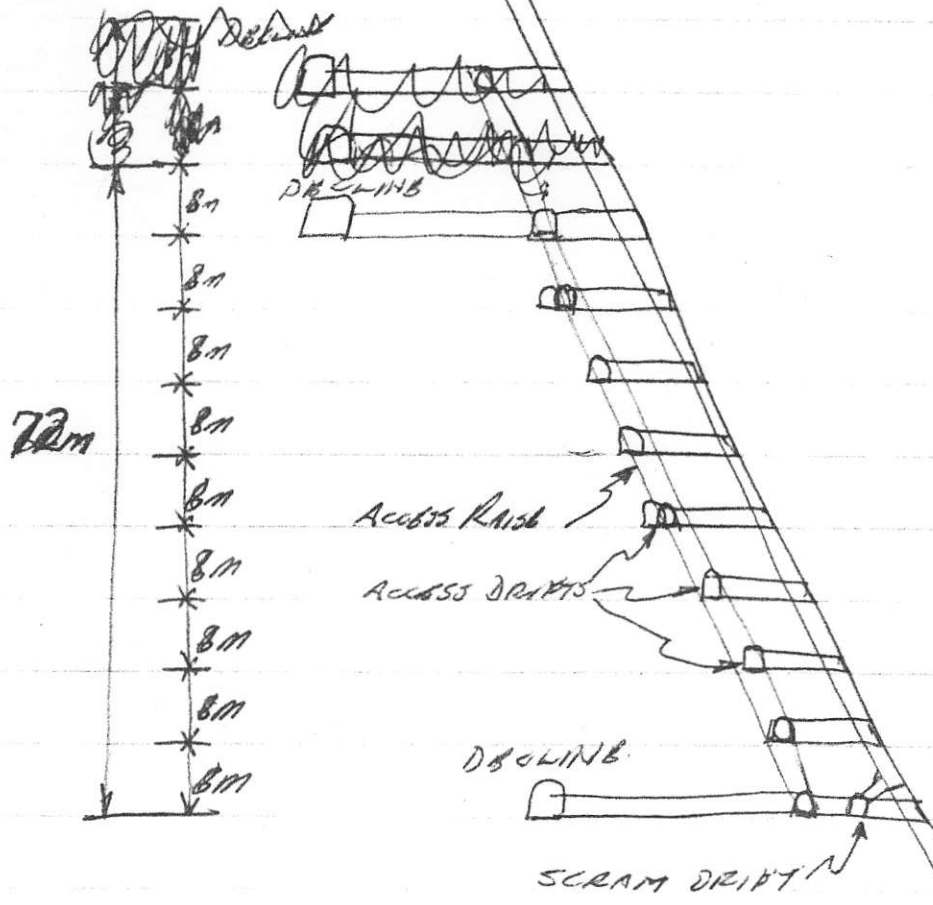


- SECTION IN PLANE OF VEIN -

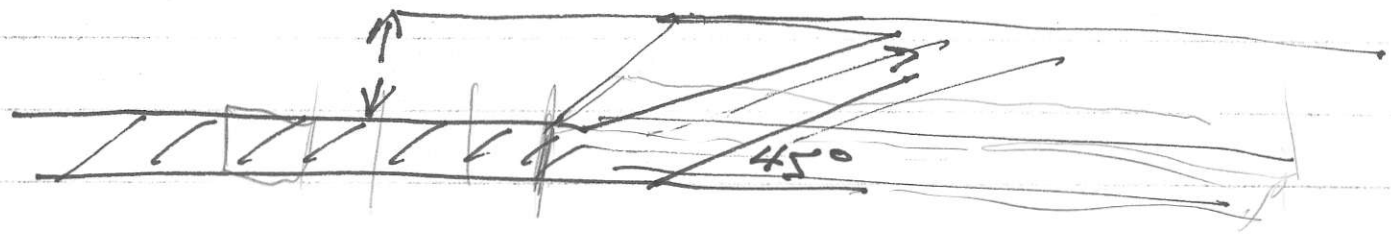
AT 1M WIDTH STOPE CONTAINS 2177 S. TONS.
TOTAL LONGHOLE DRILLING = 1392.6m (4569')

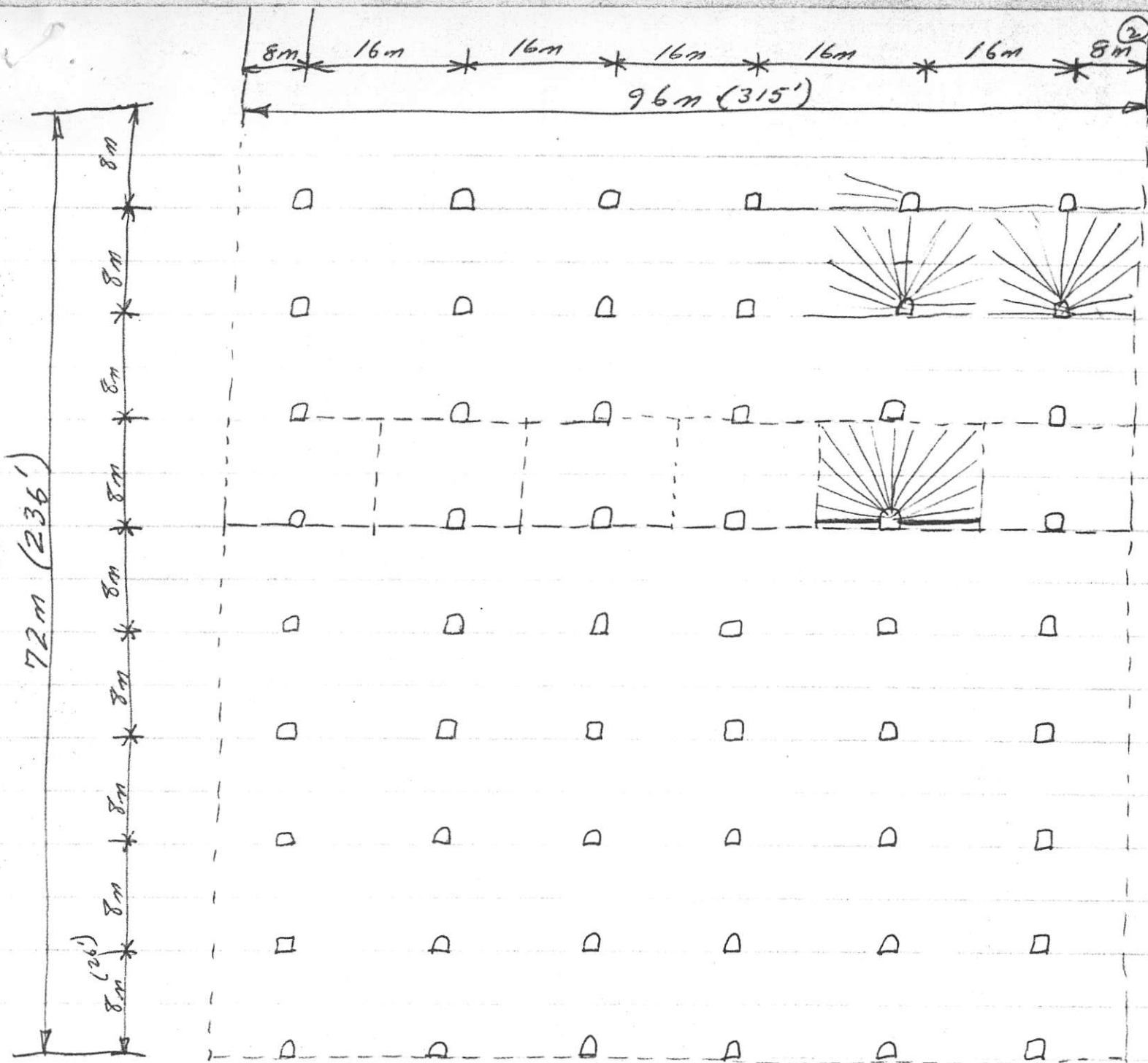
<u>LONGHOLE-SHRINKAGE</u>	
<u>1584 STOPE DRILLING</u>	
SCALE: 1:200	
DATE: 11-03-94	
DRN BY: N.E.G.	1584-2

LONG HOLE SHRINKAGE STOPING



VERTICAL SECTION





- SECTION ALONG VEIN -

ASSUME VEIN AVERAGE WIDTH IS 1m (3.281')

VOLUME IN BLOCK = $236' \times 315' \times 3.281' = 243,910 \text{ C.F.}$

ASSUME ORB IS 12 C.F. PER TON IN PLACE.

TOTAL TONNAGE = $243,910 \div 12 = \underline{20,326 \text{ SHORT TONS}}$

AT A GRADE OF 1 O.P.T. = 20326 OZ.

AT A PRICE OF \$500./OZ. CAR. = \$10,163,000.

Development Required -

- 1) 2 - 5'x8' Timbered Raies @ 64m ea. = 128m @ \$1500/m = \$192,000.
 - 2) 9 - 8'x8' Access Drifts parallel to vein @ 80m ea. = 720m @ \$90./m = 648,000.
 - 3) 54 - 8'x8' Drill Drifts to vein @ 3m ea. = 162m @ \$90./m = 145,800.
 - 4) Shotcrete vein at each drill drift = 54 @ \$2000. ea = 108,000.
 - 5) 1 - 8'x8' Extraction drift 96m @ \$900./m = 86,400.
 - 6) 20 - 5'x5' Draw Point Raies ea 3m long = 60m @ \$600./m = 36,000.
- TOTAL ROCK WORK COST = \$1,216,200.

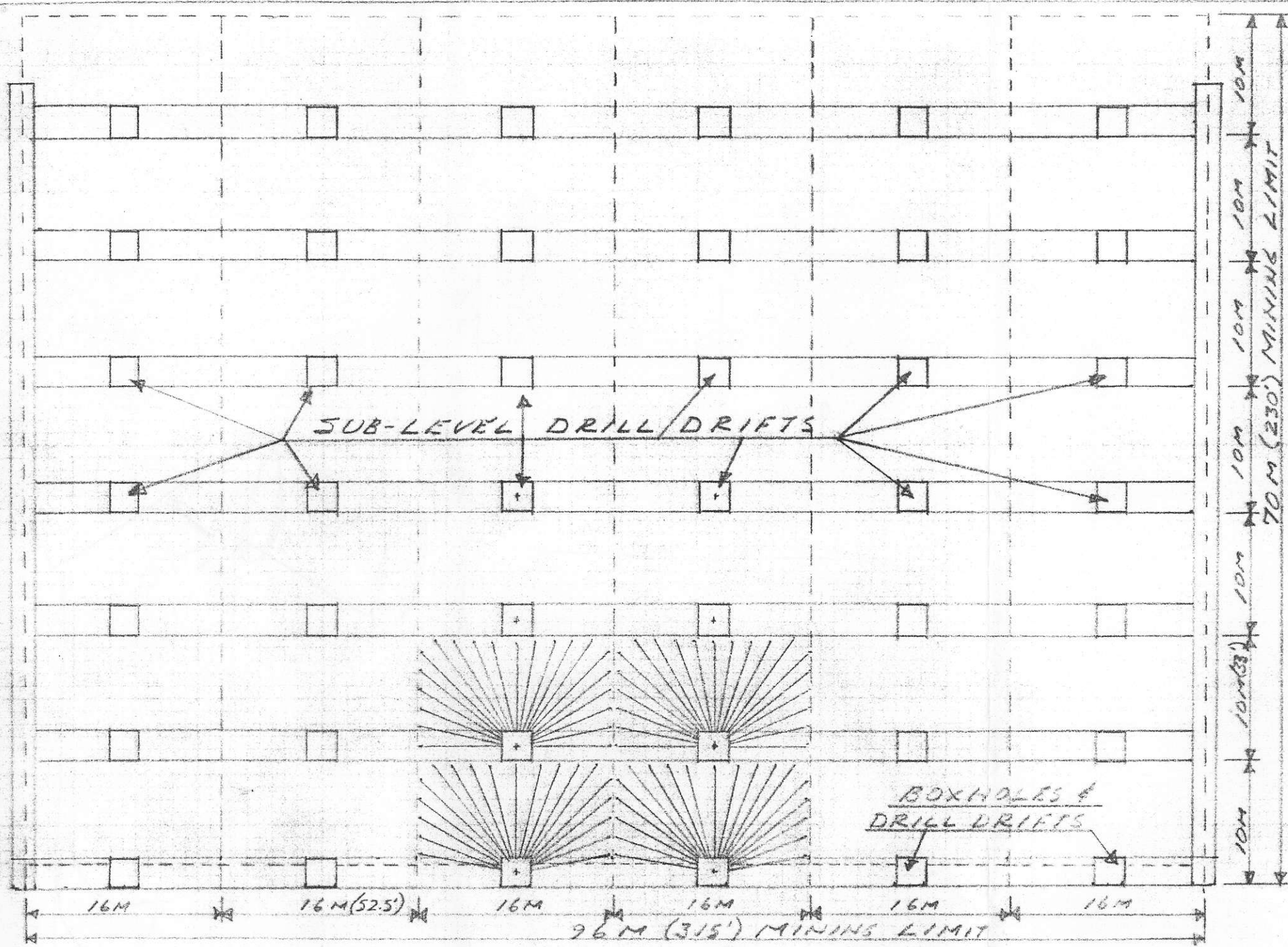
- 7) Long hole drilling (2" holes) = 30 holes/drift drift 9m long.
= 270m x 54 drift drifts = 14580m @ \$10./m = \$145,800.
- 8) Explosives & acc. to blast 14580m @ \$5./m = \$72,900.

TOTAL DRILLING & BLASTING COST. = \$218,700.

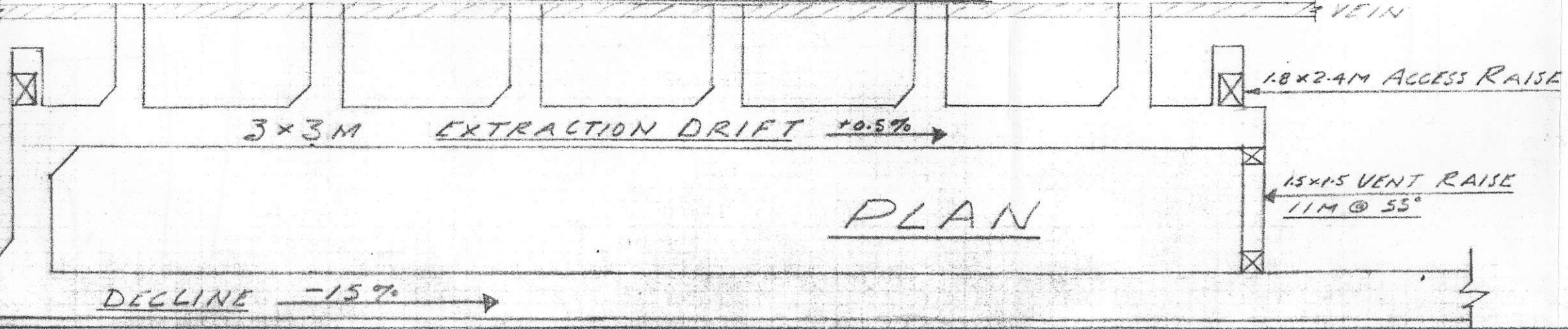
10) Muck & haul to surface. 20326T @ \$5./tm = \$101,630.

TOTAL MINING COST TO SURFACE = \$1,536,530.
ADD 20% CONTINGENCY = 307,306.

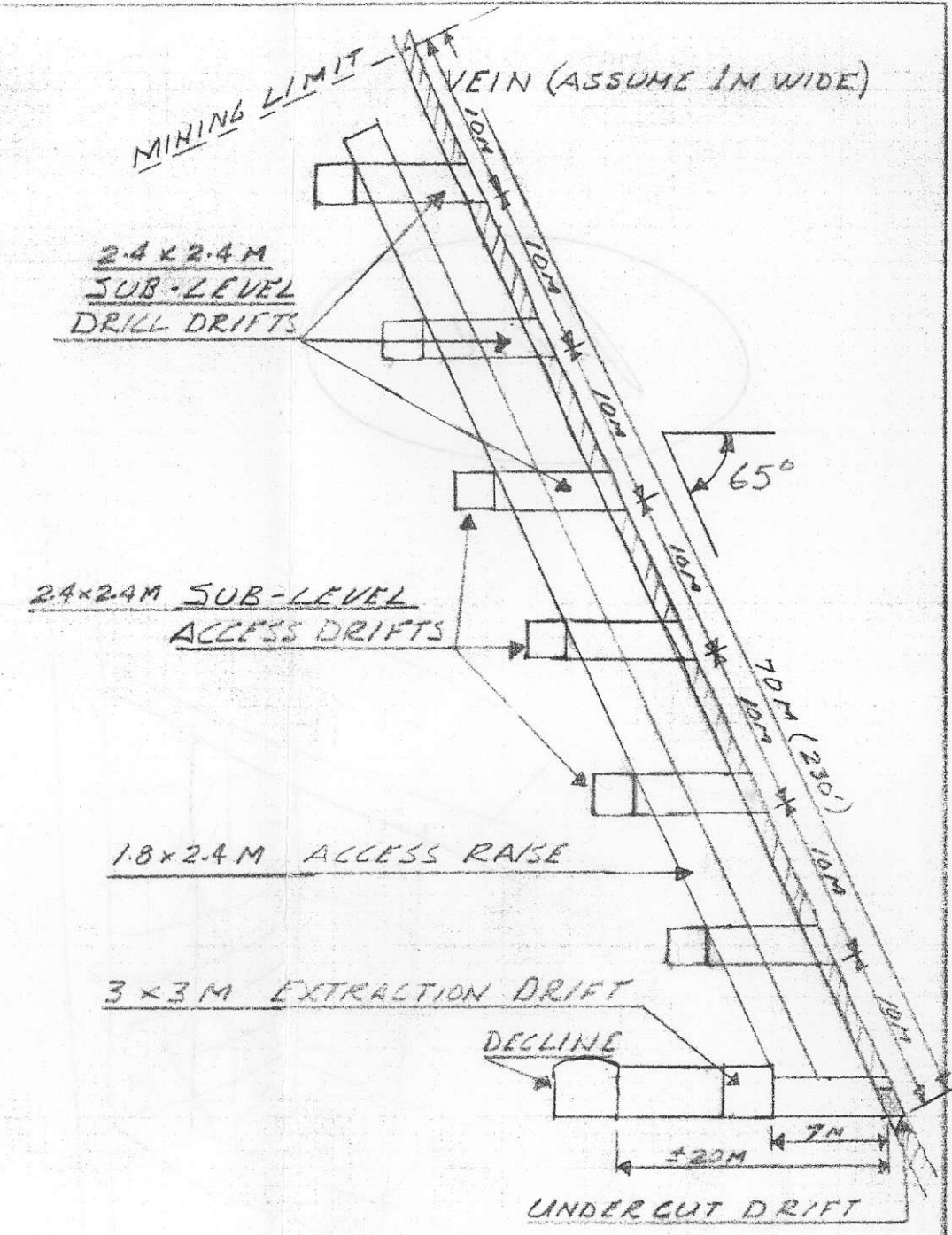
TOTAL ESTIMATED COST ON SURFACE = \$1,843,836.
SAY \$1,850,000.



ELEVATION IN VEIN

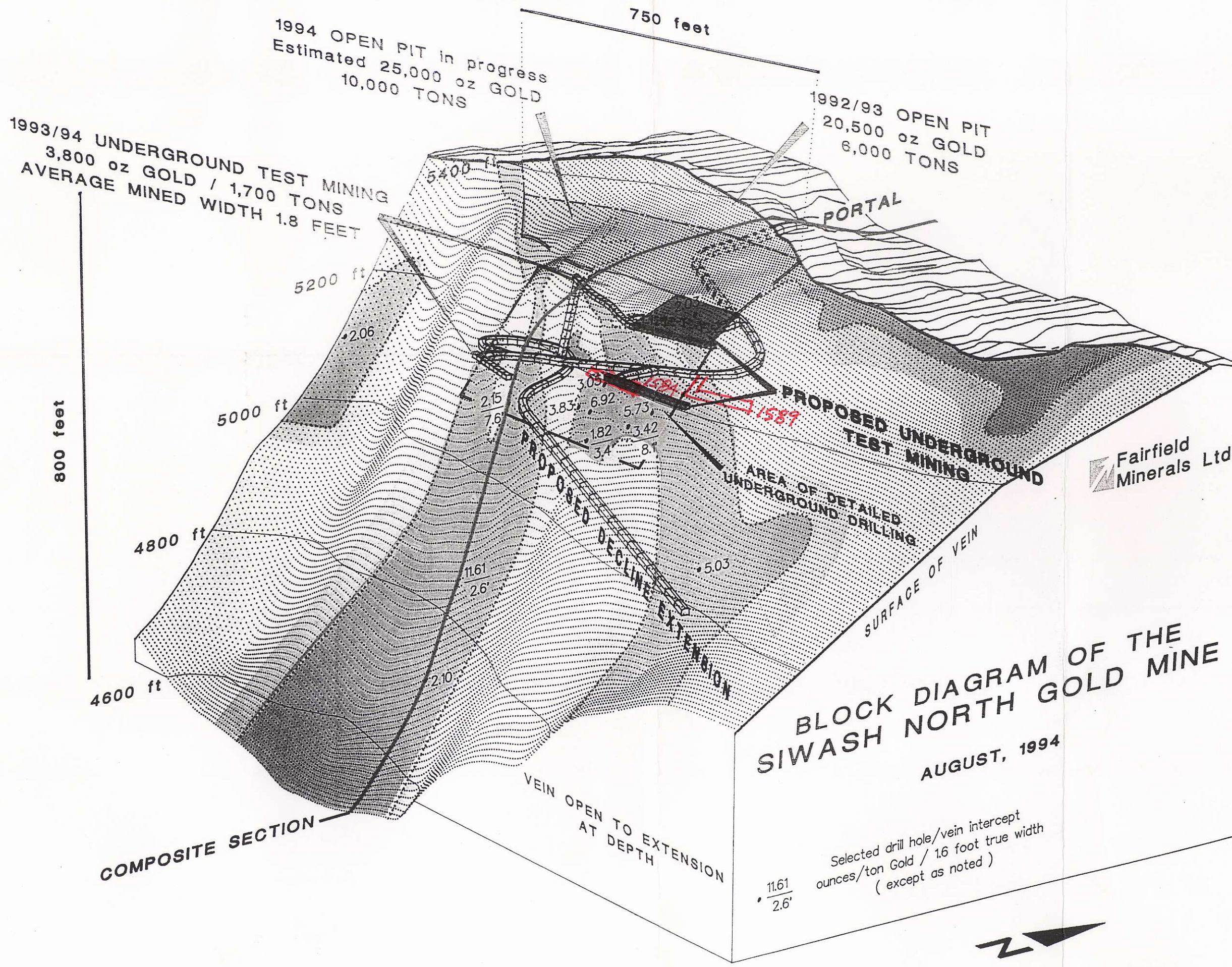


PLAN



SECTION

LONGHOLE-SHRINKAGE
 STOPPING
 10x16M PATTERN
 SCALE - 1:400
 11-02-94 N.E.G.



1994 OPEN PIT in progress
 Estimated 25,000 oz GOLD
 10,000 TONS

1992/93 OPEN PIT
 20,500 oz GOLD
 6,000 TONS

1993/94 UNDERGROUND TEST MINING
 3,800 oz GOLD / 1,700 TONS
 AVERAGE MINED WIDTH 1.8 FEET

800 feet

750 feet

5400 ft

5200 ft

5000 ft

4800 ft

4600 ft

COMPOSITE SECTION

PORTAL

PROPOSED UNDERGROUND TEST MINING

AREA OF DETAILED UNDERGROUND DRILLING

PROPOSED DECLINE EXTENSION

SURFACE OF VEIN

VEIN OPEN TO EXTENSION AT DEPTH

Fairfield Minerals Ltd.

BLOCK DIAGRAM OF THE SIWASH NORTH GOLD MINE
 AUGUST, 1994

Selected drill hole/vein intercept
 ounces/ton Gold / 1.6 foot true width
 (except as noted)

11.61 / 2.6'

2.15 / 7.6' 3.05 / 6.92' 5.73 / 8.1'

11.61 / 2.6'

2.10

2.06

5.03

