

VANCO EXPLORATION
SLIDE MOUNTAIN
SM#5

Drilled by THOMAS DRILLING

Feb. 28-29/1984

Logged by I. Watson

Scale 1 in. = 100 feet.



2950N
395E
SM#2

AZIMUTH 30° T ELEVATION 1000.0'

Overburden

Siltstone Arg. Py.

Basalt

VANCO EXPLORATION
SLIDE MOUNTAIN
SM#2

Drilled by THOMAS DRILLING
Feb. 18-19/1984

Logged by I. Watson

Scale: 1 in. = 100 feet.

0 Feet 100

2350N
335E
SM#1

AZIMUTH 30° T ELEVATION 1000.0'

Overburden

Polyolithic Breccia

Siltstone 3-5%Py.

Analcite Basalt

VANCO EXPLORATION
SLIDE MOUNTAIN
SM#1

Drilled by THOMAS DRILLING

Feb. 16-17/1984

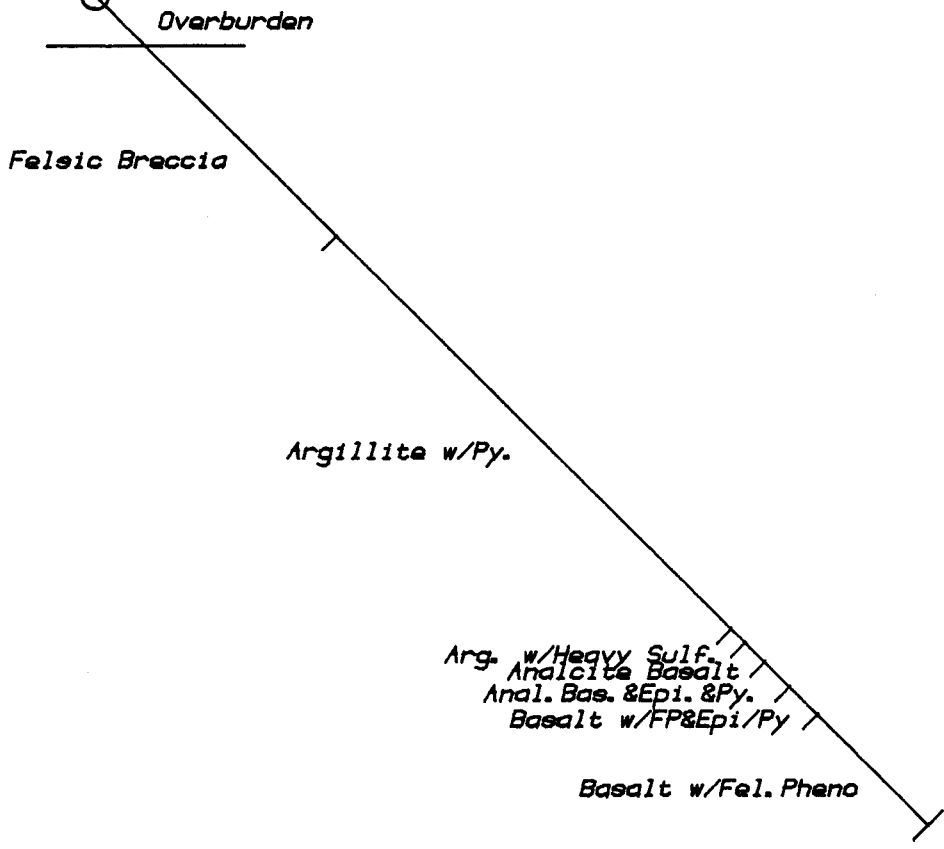
Logged by I. Watson

Scale: 1 in. = 100 feet.

0 Feet 100

2250N
250E SM#4

AZIMUTH 30° T ELEVATION 1000.0'



VANCO EXPLORATION
SLIDE MOUNTAIN
SM#4

Drilled by THOMAS DRILLING
Feb. 24-25/1984

Logged by I. Watson

Scale 1 in. = 100 feet.



1450N
230E
SM#3

AZIMUTH 30° T ELEVATION 1000.0'

Overburden

Siltstone/Vol. Tuff

Basalt

VANCO EXPLORATION
SLIDE MOUNTAIN
SM#3

Drilled by THOMAS DRILLING

Feb. 21-22/1984

Logged by I. Watson

Scale 1 in. = 100 feet.

0 Feet 100